

MFS Rule Ch. 21- Statewide Standards for Timber Harvesting in Shoreland Areas



**Tom Gilbert – Water Resources Specialist
Maine Forest Service**

Department of Agriculture, Conservation and Forestry

MFS Rule Ch. 21- Statewide Standards for Timber Harvesting in Shoreland Areas

Goal: Single set of standards for TIMBER HARVESTING operations in shoreland areas, that will:

- apply throughout the state;
- replace current multiple jurisdictions, and,
- establish a single enforcing authority (MFS)

**DOES NOT INCLUDE CUTTING TREES
FOR OTHER PURPOSES!**

MFS Rule Ch. 21- Statewide Standards for Timber Harvesting in Shoreland Areas

- Part of municipal Shoreland Ordinance
 - Must be approved by DEP
- Municipalities have options:
 - Repeal (Option 1)
 - Adopt identical standards (Option 2)
 - Keep their existing SZ ordinance (Option 3)

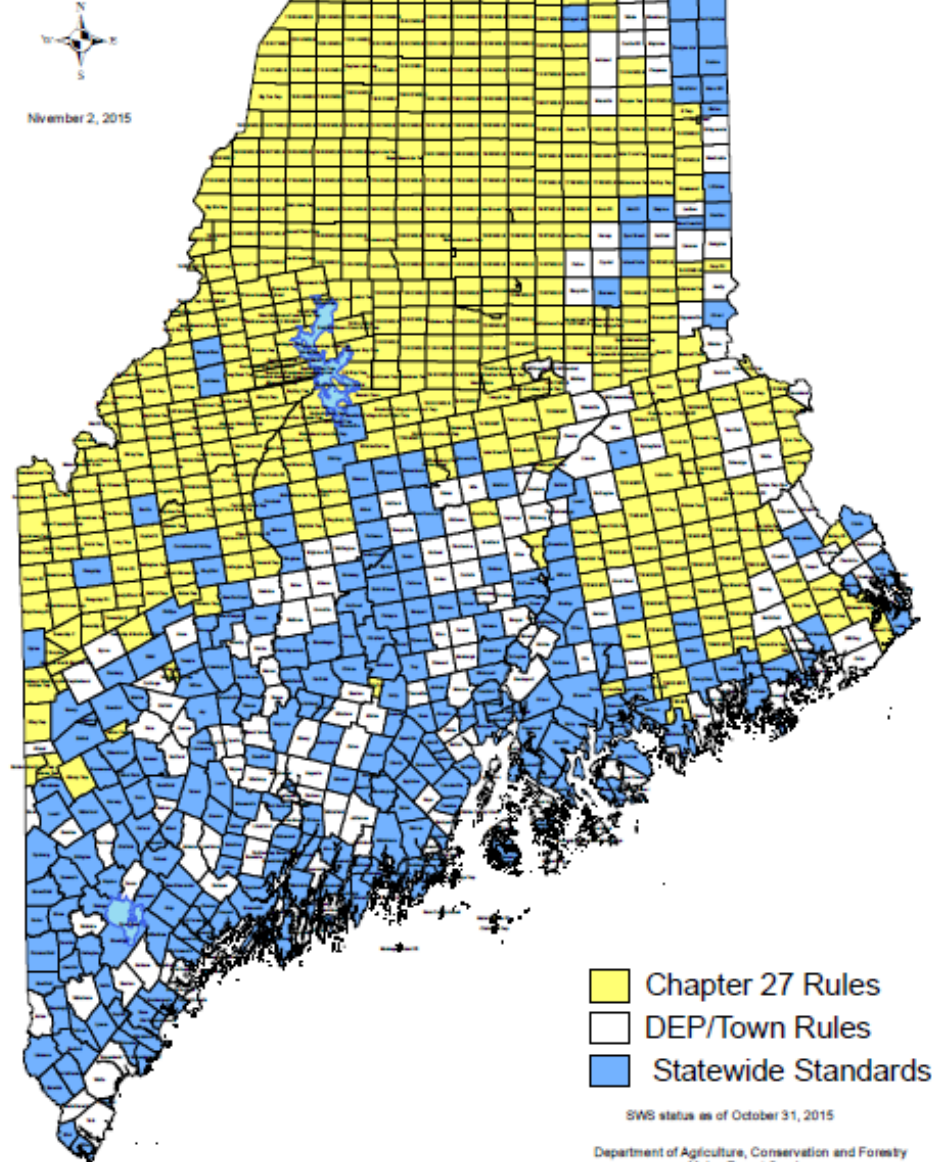
MFS Rule Ch. 21- Statewide Standards for Timber Harvesting in Shoreland Areas

- Option 1 – Maine Forest Service takes over enforcement
- Option 2 – MFS enforces or enforces jointly with town
- Option 3 - Town administers and enforces old shoreland zoning ordinance
 - *Other state regulations are still enforced by MFS (i.e. Natural Resources Protection Act, Erosion and Sedimentation Control Act, etc.)

Current Status of towns with regard to SWS

Timber Harvesting in the Shoreland Areas

Town Status Map



Resources

- District foresters and forest rangers are available to help on site

Statewide standards website

<http://www.maineforestservice.gov>

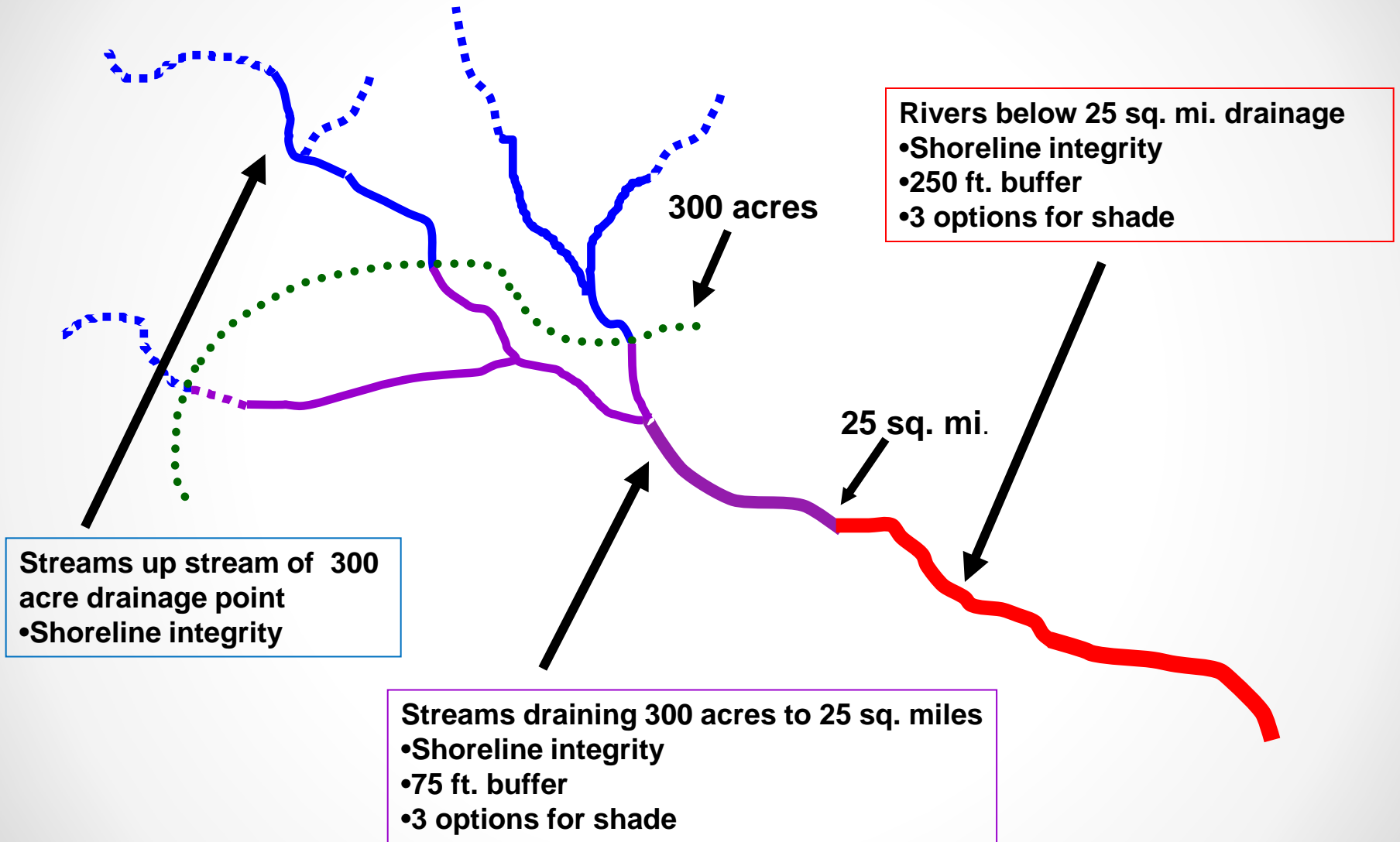
- Copy of the rules
- Town status
- Maps and shape files
- Official interpretations of questions

Timber Harvesting Standards

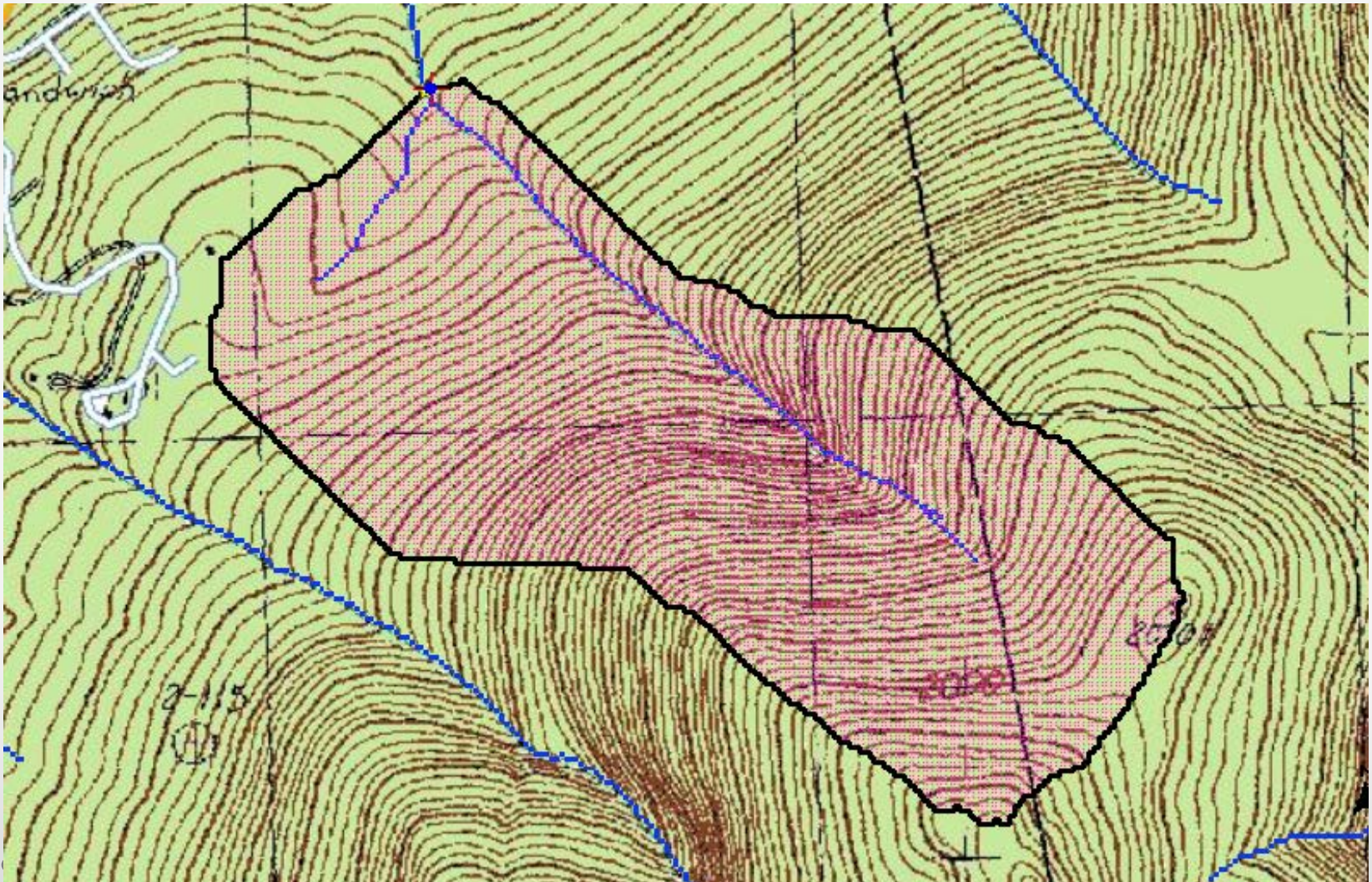


This presentation is an overview. For complete details see the actual rule - MFS Chapter 21

Statewide Standards for Timber Harvesting in Shoreland Areas - Rivers



A 300 acre watershed drains an area approximately 1 mile by ½ mile, or a circle about ¾ miles in diameter



Stream Channel

- **Stream channel**
 - Between defined banks
 - Lacks terrestrial vegetation or
 - Exposed parent material bed
 - Hydrologically connected to other waterbodies
- **Does not include**
 - Rills or gullies in disturbed soils

Removals - 75' zones

- A. Harvesting of no more than 40 percent of the total volume on each acre for trees 4.5 inches DBH or greater in any 10 year period is permitted OR,
- B. The residual stand must contain an average basal area of at least 60 square feet per acre of woody vegetation greater than or equal to 1.0 inch DBH, of which 40 square feet per acre must be greater than or equal to 4.5 inches DBH;
- C. A well-distributed stand of trees which is windfirm, and other vegetation including existing ground cover, must be maintained; and
- D. There must be no cleared openings.

Removals - 250' zones

- A. Harvesting of no more than 40 percent of the total volume on each acre for trees 4.5 inches DBH or greater in any 10 year period is permitted OR,
- B. The residual stand must contain an average basal area of at least 60 square feet per acre of woody vegetation greater than or equal to 1.0 inch DBH, of which 40 square feet per acre must be greater than or equal to 4.5 inches DBH;
- C. A well-distributed stand of trees which is windfirm, and other vegetation including existing ground cover, must be maintained; and,
- D. No cleared openings greater than 14,000 square feet... Where openings exceed 10,000 square feet, they must be at least 100 feet apart. Cleared openings will be included in the calculation of total volume removal.

Option 3- Outcome Based (all zones)

An alternative method proposed in an application, signed by a Licensed Forester or Certified Wildlife Professional, approved by the MFS, which provides equal or better protection of the shoreland area than this rule.

Shoreline Integrity

All timber harvesting operations must protect shoreline integrity, regardless of the size of the waterbody.

If any problems are created, they must be corrected by the responsible party.

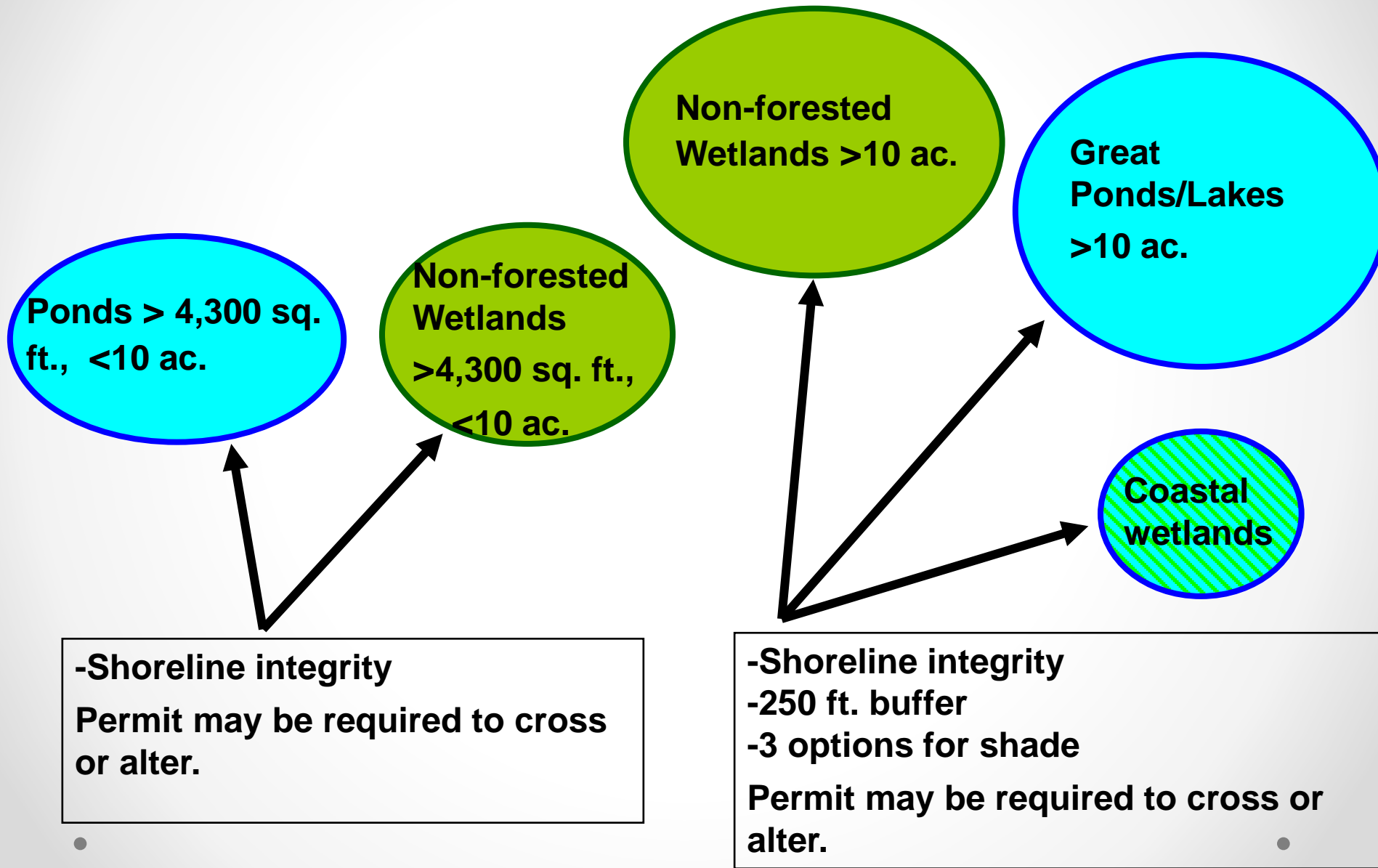
Shoreline integrity

Disruption of shoreline integrity:

- Alteration of
 - physical shape, properties, or condition of a shoreline
- Recognized by
 - compacted, scarified and/or rutted soil, an abnormal channel or shoreline cross-section,



Timber Harvesting in Shorland Areas – Ponds, lakes and wetlands



Statewide Standards for Timber Harvesting in Shoreland Areas

FOR MORE INFORMATION:

Maine Forest Service

22 State House Station

Augusta, ME 04333-0022

p: 287-1073

thomas.gilbert@maine.gov

www.maineforestservice.gov