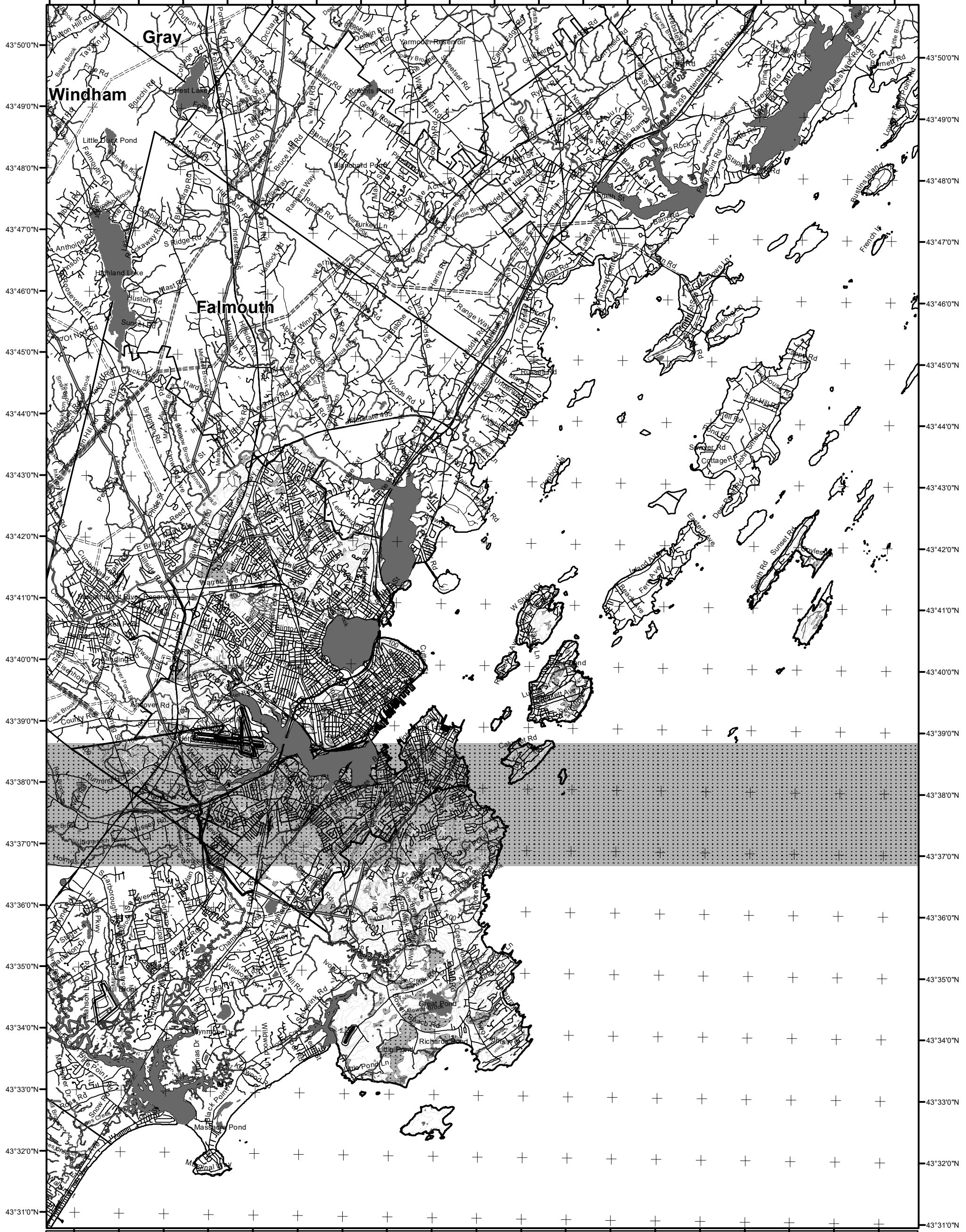


70°23'0"W 70°22'0"W 70°21'0"W 70°20'0"W 70°19'0"W 70°18'0"W 70°17'0"W 70°16'0"W 70°15'0"W 70°14'0"W 70°13'0"W 70°12'0"W 70°11'0"W 70°10'0"W 70°9'0"W 70°8'0"W 70°7'0"W 70°6'0"W 70°5'0"W 70°4'0"W



LO Last Name _____
LO First Name _____
Prepared By _____
FONS # _____
Date _____

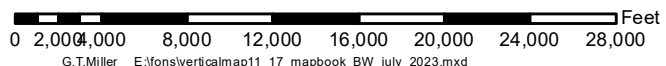
Forest Operation Notification & Harvest Location Map

Portland

For shoreland zoning, check with Town Office/DEP

Department of Agriculture,
Conservation and Forestry
Maine Forest Service
Forest Policy & Management

July 2023



Roads

— E911 Roads
— 24k Roads

Contours

— 20 feet
— 100 feet

Utilities

==== Electric
— Pipeline
+ Railroad
— Airfield

Freshwater Wetlands

■ Forest/Shrub

Hydrology

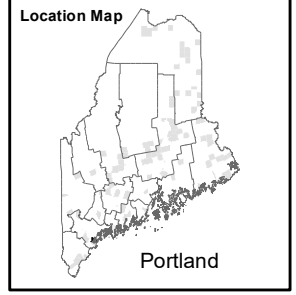
■ Pond or Lake
■ River
■ Estuary

Streams

— Stream/River
- - - Stream/River: Intermittent
— Stream/River: Perennial

Town Status

■ FON Town
Statewide Standards Rules do not apply
(Town/MDEP Standards apply)
□ Statewide Standards Rules Apply or
LUPC - Unorganized/deorganized Town
■ Outside Maine



PLEASE RETURN
ENTIRE MAP
Not a legal survey map

For additional information,
Please contact the MFS at:
1-207-287-2791 or
1-800-367-0223 (in-state)

Email us at: forestinfo@maine.gov

Or visit us on the web at:
www.maine-forestservice.gov

Data Source:
Maine Office of GIS
US Fish & Wildlife