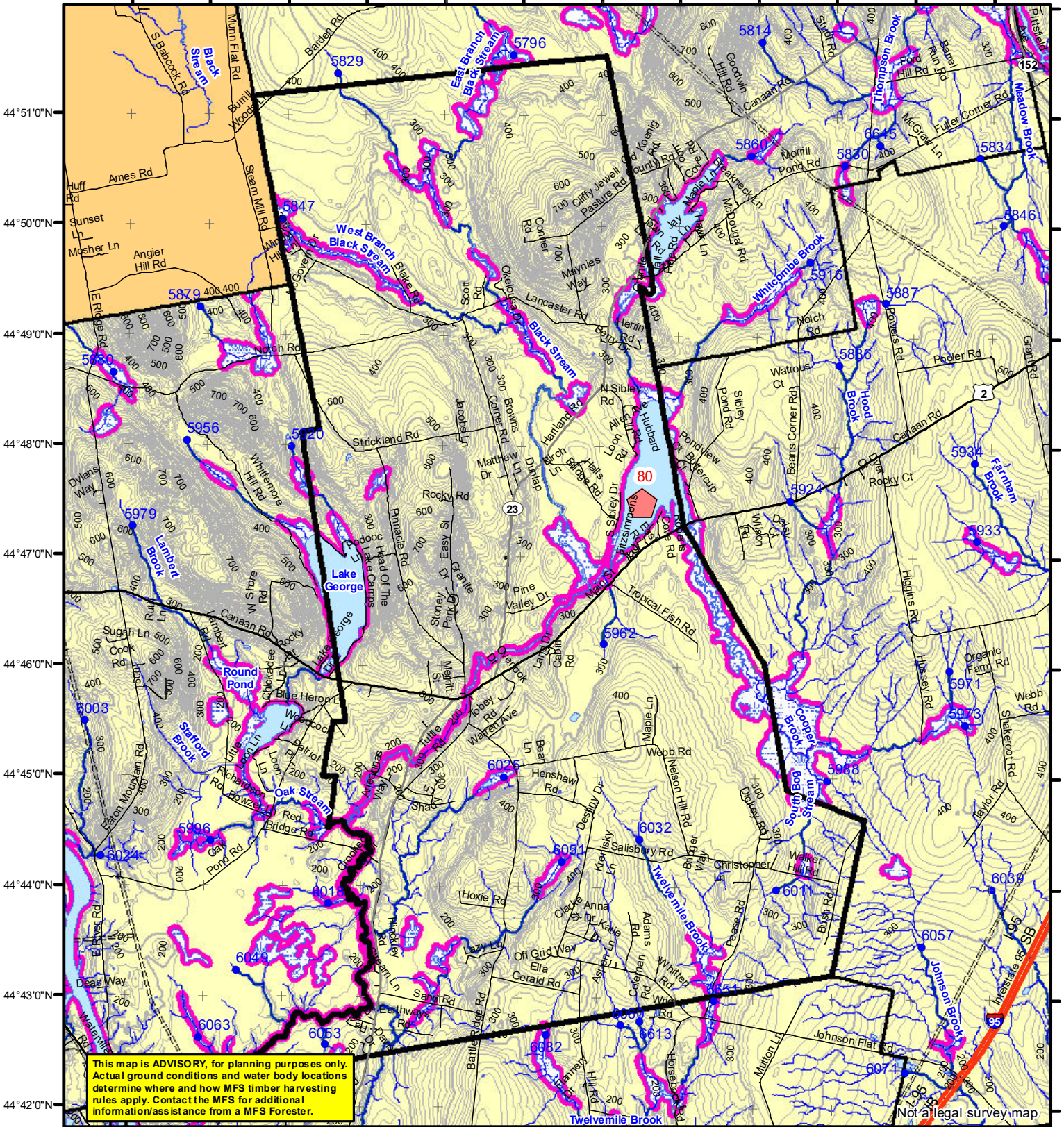


69°38'0"W 69°37'0"W 69°36'0"W 69°35'0"W 69°34'0"W 69°33'0"W 69°32'0"W 69°31'0"W 69°30'0"W 69°29'0"W 69°28'0"W 69°27'0"W



This map is ADVISORY, for planning purposes only. Actual ground conditions and water body locations determine where and how MFS timber harvesting rules apply. Contact the MFS for additional information/assistance from a MFS Forester.

**Statewide Standards**

**Forest Operation Notification & Shoreland Area\* Map**

Department of Agriculture, Conservation and Forestry  
Maine Forest Service  
Forest Policy & Management

LO Last Name \_\_\_\_\_  
LO First Name \_\_\_\_\_  
Prepared By \_\_\_\_\_  
FONS # \_\_\_\_\_  
Date \_\_\_\_\_

- Buffers**
- 250 Foot Buffer Zones
  - Great Ponds
  - Non-forested Wetlands greater than 10 acres
  - Rivers below the 25 square mile drainage point
  - Coastal Wetlands
  - Tidal Waters
  - Essential Wildlife Habitat (Least Tern, Roseate Tern, Piping Plover)
- 75 Foot Buffer Zones -**  
Streams between the 300 acre drainage point and the 25 square mile drainage point
- Shoreline Integrity -** Streams draining less than 300 acres, ponds and Non-forested Wetlands greater than 0.1 acres and less than 10 acres
- Shoreline Integrity also applies to UNMAPPED streams and wetlands.
- Habitat**
- Essential Wildlife Habitat (Least Tern, Roseate Tern, Piping Plover)

- Drainage Points**
- 1234 300 Acre Drainage Point (start of the 75 ft buffer) 1234 - ID Number (location info)
  - 56 25 Square Mile Drainage Point (start of the 250 ft buffer) 56 ID Number (location info)
- Wetlands**
- Emergent or Marine Wetland
  - Non-forested Wetlands Greater Than 10 acres (Lacustrine, Palustrine)

**Canaan**

Adoption Date  
10/12/2012

December 2021

0 2,000 4,000 8,000 12,000 Feet

\*See MFS Rule - Chapter 2.1 for additional information.

- Roads**
- Interstate
  - US Highway
  - State Highway
  - 24k Roads
- Hydrology**
- Pond or Lake
  - River
  - Estuary
- Streams**

- Contours**
- 20 ft
  - 100 ft
- Utilities**
- Electric
  - Pipeline
  - Railroad
  - Airfield
- Legend**
- FON Town
  - Statewide Standards Rules do not apply (Town/MDEP Standards apply)
  - Statewide Standards Rules Apply
  - LUPC - Unorganized or Deorganized Town
  - Outside Maine
- Data Source:  
Maine Office of GIS
- G.T.Miller E:\aws\SW S page size december 2021.mxd