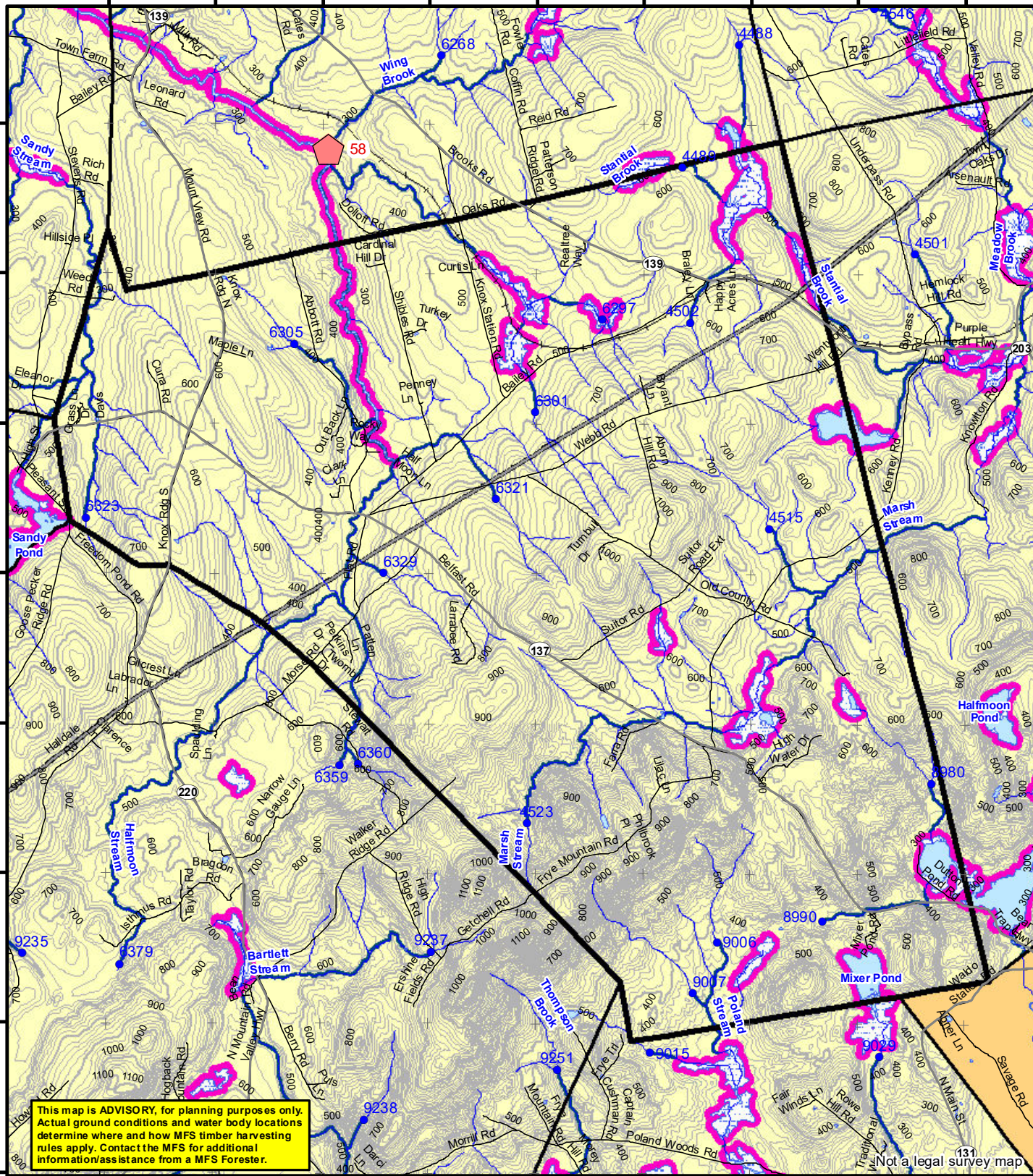


69°17'0"W 69°16'0"W 69°15'0"W 69°14'0"W 69°13'0"W 69°12'0"W 69°11'0"W 69°10'0"W 69°9'0"W

44°34'0"N  
44°33'0"N  
44°32'0"N  
44°31'0"N  
44°30'0"N  
44°29'0"N  
44°28'0"N  
44°27'0"N



**This map is ADVISORY, for planning purposes only. Actual ground conditions and water body locations determine where and how MFS timber harvesting rules apply. Contact the MFS for additional information/assistance from a MFS Forester.**

Not a legal survey map



**Statewide Standards**

**Buffers**

- 250 Foot Buffer Zones
  - Great Ponds
  - Non-forested Wetlands greater than 10 acres
  - Rivers below the 25 square mile drainage point
  - Coastal Wetlands
  - Tidal Waters
  - Essential Wildlife Habitat (Least Tern, Roseate Tern, Piping Plover)
- 75 Foot Buffer Zones - Streams between the 300 acre drainage point and the 25 square mile drainage point
- Shoreline Integrity - Streams draining less than 300 acres, ponds and Non-forested Wetlands greater than 0.1 acres and less than 10 acres
- Shoreline Integrity also applies to UNMAPPED streams and wetlands.

**Habitat**

- Essential Wildlife Habitat (Least Tern, Roseate Tern, Piping Plover)

**Drainage Points**

- 1234 300 Acre Drainage Point (start of the 75 ft buffer) 1234 - ID Number (location info)
- 56 25 Square Mile Drainage Point (start of the 250 ft buffer) 56 ID Number (location info)

**Wetlands**

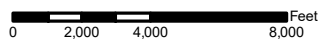
- Emergent or Marine Wetland
- Non-forested Wetlands Greater Than 10 acres (Lacustrine, Palustrine)

**Forest Operation Notification & Shoreland Area\* Map**

**Knox**

Adoption Date  
6/18/2009

December 2021



\*See MFS Rule - Chapter 2.1 for additional information.

Department of Agriculture, Conservation and Forestry  
Maine Forest Service  
Forest Policy & Management

**Roads**

- Interstate
- US Highway
- State Highway
- 24k Roads

**Hydrology**

- Pond or Lake
- River
- Estuary
- Streams

**Contours**

- 20 ft
- 100 ft

**Utilities**

- Electric
- Pipeline
- Railroad
- Airfield

Data Source:  
Maine Office of GIS

G.T.Miller E:\sws\SW\_S page size december 2021.mxd

LO Last Name \_\_\_\_\_  
LO First Name \_\_\_\_\_  
Prepared By \_\_\_\_\_  
FONS # \_\_\_\_\_  
Date \_\_\_\_\_

- FON Town
- Statewide Standards Rules do not apply (Town/MDEP Standards apply)
- Statewide Standards Rules Apply
- LUPC - Unorganized or Deorganized Town
- Outside Maine