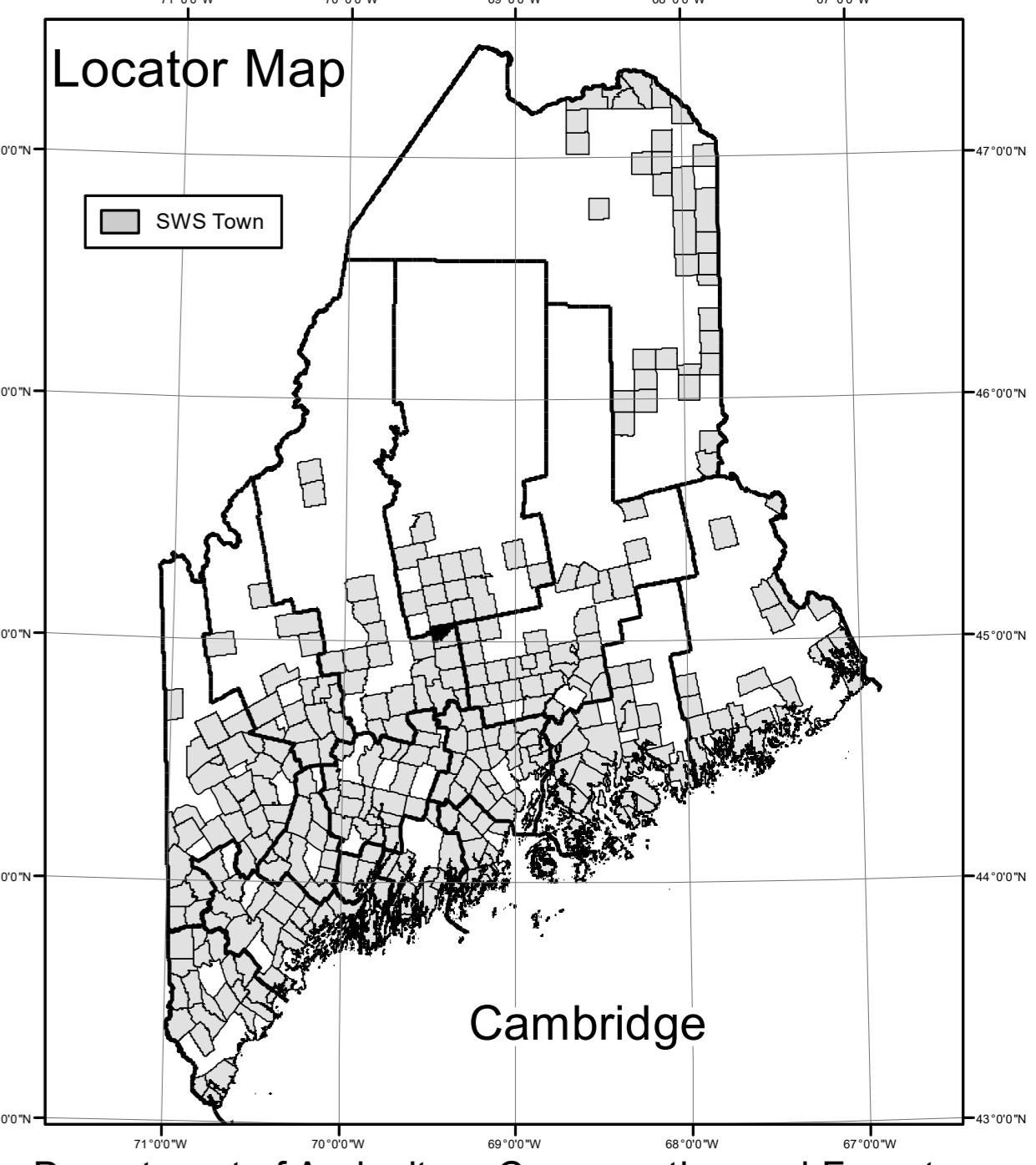


Statewide Standards for Timber Harvesting in the Shoreland Area\* Map

This map is **ADVISORY**, for planning purposes only. Actual ground conditions and water body locations determine where and how MFS timber harvesting rules apply. Contact the MFS for additional information/assistance from a MFS Forester.

Forest Operation Notification & Shoreland Area\* Map

Adoption Date  
3/25/2010



- Wetlands**
- Non-forested Wetlands Greater Than 10 acres (Lacustrine, Palustrine)
  - Emergent or Marine Wetland

- Drainage Points**
- 1234 300 Acre Drainage Point (start of the 75 ft buffer)
  - 56 25 Square Mile Drainage Point (start of the 250 ft buffer)

- Cambridge**
- SWS Town
  - FON Town Town/DEP Standards apply (SWS Rules do not apply)
  - Outside Maine
  - LUPC - Unorganized or Deorganized Town

- Buffers**
- 250 Foot Buffer Zones
    - Great Ponds
    - Non-forested Wetlands greater than 10 acres
    - Rivers below the 25 square mile drainage point
    - Coastal Wetlands
    - Tidal Waters
    - Essential Wildlife Habitat (Least Tern, Roseate Tern, Piping Plover)
  - 75 Foot Buffer Zones - Streams between the 300 acre drainage point and the 25 square mile drainage point
  - Shoreline Integrity - Streams draining less than 300 acres, ponds and Non-forested Wetlands greater than 0.1 acres and less than 10 acres
  - Shoreline Integrity also applies to UNMAPPED streams & wetlands.

**Maine Forest Service**

For additional information, please contact the MFS at: 1-207-287-2791 or 1-800-367-0223 (in-State)

Email us at: [forestinfo@maine.gov](mailto:forestinfo@maine.gov)

or on the web at: [www.maineforestservice.gov](http://www.maineforestservice.gov)

- Habitat**
- Essential Wildlife Habitat (Least Tern, Roseate Tern, Piping Plover)

December 2021

