

# GREATER PORTLAND & CASCO BAY REGION



Lat 43.894687, Lon -70.265574

## DIRECTIONS

Pineland Public Land is located about four miles east of the center of the town of Gray. The Depot Road Trailhead is located between Town Farm Road and Route 231/New Gloucester Road.

## CONTACTS

Maine Bureau of Parks and Lands  
Western Region Public Lands Office  
P.O. Box 327  
Farmington, ME 04938  
207-778-8231  
[www.maine.gov/dacf/publiclands](http://www.maine.gov/dacf/publiclands)  
[www.maine.gov/pineland](http://www.maine.gov/pineland)

MAINE TRAVEL INFORMATION  
[www.visitmaine.com](http://www.visitmaine.com)



## SERVICES & FACILITIES

- Trailhead with a picnic table on Depot Road
- 5.1 miles of trails that include two loop-trail options:
  - North Loop Trail = 1.7 mile loop
  - South Loop Trail = 1.2 mile loop
- Single and double track biking trails
- Snowmobiles pass by Pineland on the Powerline Corridor.



[www.MaineTrailFinder.com](http://www.MaineTrailFinder.com)

2023

# PINELAND PUBLIC LAND GUIDE & MAP

Rolling trails through woodlands with access to the Royal River.



[www.parksandlands.com](http://www.parksandlands.com)

## OVERVIEW

Pineland Public Land offers over 600 acres of landscape and forest on rolling hills that invite hikers to explore. The small trailhead on Depot Road provides parking and access to hiking trails through ever changing woodlands. Pineland claims the largest ironwood trees in the state and is home to blackgum tupelo trees which are rare at this latitude, as well as large impressive pines, oaks and hemlocks.

The variety of habitats provide the opportunity for visitors to see quite a range of wildlife. Upland species include white-tailed deer, red fox, snowshoe hare, red squirrel, gray squirrel, ruffed grouse, woodcock, and wild turkey. Stands of evergreens provide habitat for red-bellied snake, northern flying squirrel, hermit thrush, and merlin.

Sustainable forest management is one of the many principal land management activities that take place on Maine's Public Reserved Lands. Scientifically-based timber harvests are planned in coordination with recreation, wildlife, forest health, and scenic considerations. Revenues from timber sales support the management and maintenance of trails, campsites, roads and other infrastructure and wildlife management projects.

## PARTNERS AND SUPPORTERS

This property was acquired in part with funds from the Land for Maine's Future program. Partners that have contributed to trail planning and maintenance, habitat management, and recreational planning include:



- AmeriCorps Maine Conservation Corps - trail maintenance
- Central Maine Power - CMP corridor access
- Maine Natural Areas Program - habitat inventories
- Maine Inland Fisheries and Wildlife - wildlife management
- Royal River Conservation Trust - trail connectivity

## WHEN TO VISIT

Pineland Public Land is a popular destination for locals and is open year-round for day-use. Have an alternate location in mind in case the small trailhead is full. Be prepared for changing conditions and take extra care during the winter months. Wear blaze orange during the hunting season.

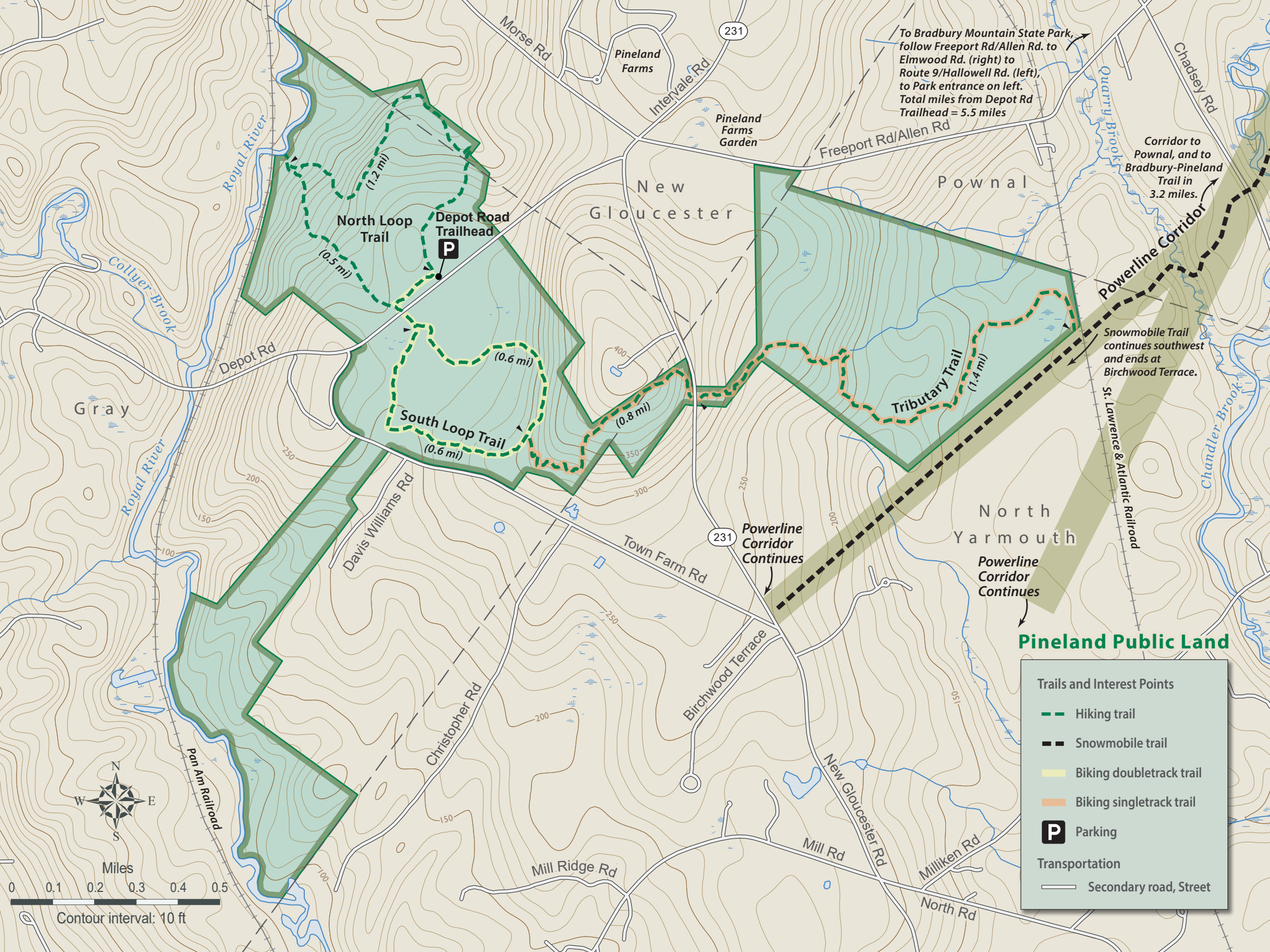
- SPRING** Birders watch for the arrival of migratory birds and also visit Bradbury Mt. State Park to hawk watch and attend Feathers Over Freeport.
- SUMMER** Hikers enjoy the cool forested trails. Bicyclists have options of single or doubletrack trails.
- AUTUMN** Wear blaze orange during the hunting season. Fall foliage view time is typically during October with peak color from the 10/14-20. For foliage reports visit: [MaineFoliage.com](http://MaineFoliage.com)
- WINTER** The South Loop Trail may be enjoyed on cross-country skis or snowshoes; the North Loop is for experts and only in best conditions with deep snow. Snowmobile riders pass by Pineland Public Land along the Powerline Corridor.

**SNOWMOBILES** are allowed on the Powerline Corridor but are not permitted on Pineland Public Land. FMI visit [www.maine.gov/dacf/snowmobile](http://www.maine.gov/dacf/snowmobile) or contact the Bureau of Parks and Lands Snowmobile Program: 22 State House Station, Augusta, ME 04333-0022 (207) 287-4957

## NEARBY DESTINATIONS

Pineland Public Land is in Maine's Greater Portland and Casco Bay Region. Other destinations within this area include:

- **Bradbury Mt. State Park**, in Pownal and near Freeport, the park's 800 acres offers year-round trail activities and camping. The park is renown for its challenging trails and is a mountain biking destination. FMI: [www.maine.gov/bradburymountain](http://www.maine.gov/bradburymountain)
- **Mayall Mills**, the first successful water-powered woolen mill in North America, is the remnant of Samuel Mayall's mill that operated from 1791 into early 1902. Location: off Route 202 at the intersection of Mayall and Megquier Road.
- **Wolfe's Neck Woods State Park**, offers visitors five miles of hiking trails on 250 acres that include rocky shorelines on Casco Bay and the Harraseeket River, just minutes from downtown Freeport. Osprey viewing on the accessible White Pines Trail, guided hikes, and Feathers Over Freeport are signature activities at the park. FMI: [www.maine.gov/wolfesneckwoods](http://www.maine.gov/wolfesneckwoods)



## TRAILS

**North Loop Trail** (moderate, 1.7-mile loop)  
 Begins and ends at the Depot Road Trailhead. The trail meanders through woodlands and traverses some steep slopes with rooted and rocky sections, as well as a few narrow footbridges across seasonally wet areas. The Royal River may be viewed at 1.2-miles when traveling counter-clockwise on the loop.

Bicycle riders are allowed only on the section that parallels Depot Road to access the South Loop and Tributary Trails. They may also travel the Powerline Corridor northeastward to the Bradbury-Pineland Trail and Bradbury Mt. State Park. **WARNING**, ticks are extremely abundant on the powerline corridor, be prepared to protect yourself from ticks.

**South Loop Trail** (easy to moderate, 1.2-mile loop)  
 Begins south of Depot Road. Access via the North Loop Trail section that parallels Depot Rd. Use caution at the road crossing. Trail meanders through mixed woods on packed earth path with occasional boardwalks.

**Tributary Trail** (moderate, 2.2 miles one-way)  
 This trail extends between the South Loop Trail and the terminus of Pineland Public Land at the railroad tracks and Powerline Corridor. Its tread is narrow with a natural, irregular surface. The trail passes a trickling small waterfall that feeds into Chandler Brook. The mt. bike riding conditions are more challenging and primitive on this trail than on the South Loop Trail.

## VISITOR RULES

- Use** Day-use only.
- Fires** Are not allowed.
- Pets** Must be attended and under control at all times.
  - Please:**
    - Always carry a leash and be prepared to leash your pet as requested.
    - Clean up their waste immediately.
- Trash** Carry out all trash.
- Fishing** All those fishing must have a valid license and review the State's open water fishing regulations. Anglers are asked to use lead-free sinkers and jigs to prevent metal poisoning of loons, eagles and other wildlife. [www.maine.gov/ifw/](http://www.maine.gov/ifw/)
- Hunting** Although hunting is allowed, do not discharge weapons within 300 feet of any picnic or parking area, marked hiking trail, or other developed area. Hunting license and season information is available at [www.maine.gov/ifw/](http://www.maine.gov/ifw/) Please also check with municipalities for local discharge ordinances.

**Trails and Interest Points**

- Hiking trail
- Snowmobile trail
- Biking doubletrack trail
- Biking singletrack trail
- P** Parking

**Transportation**

- Secondary road, Street