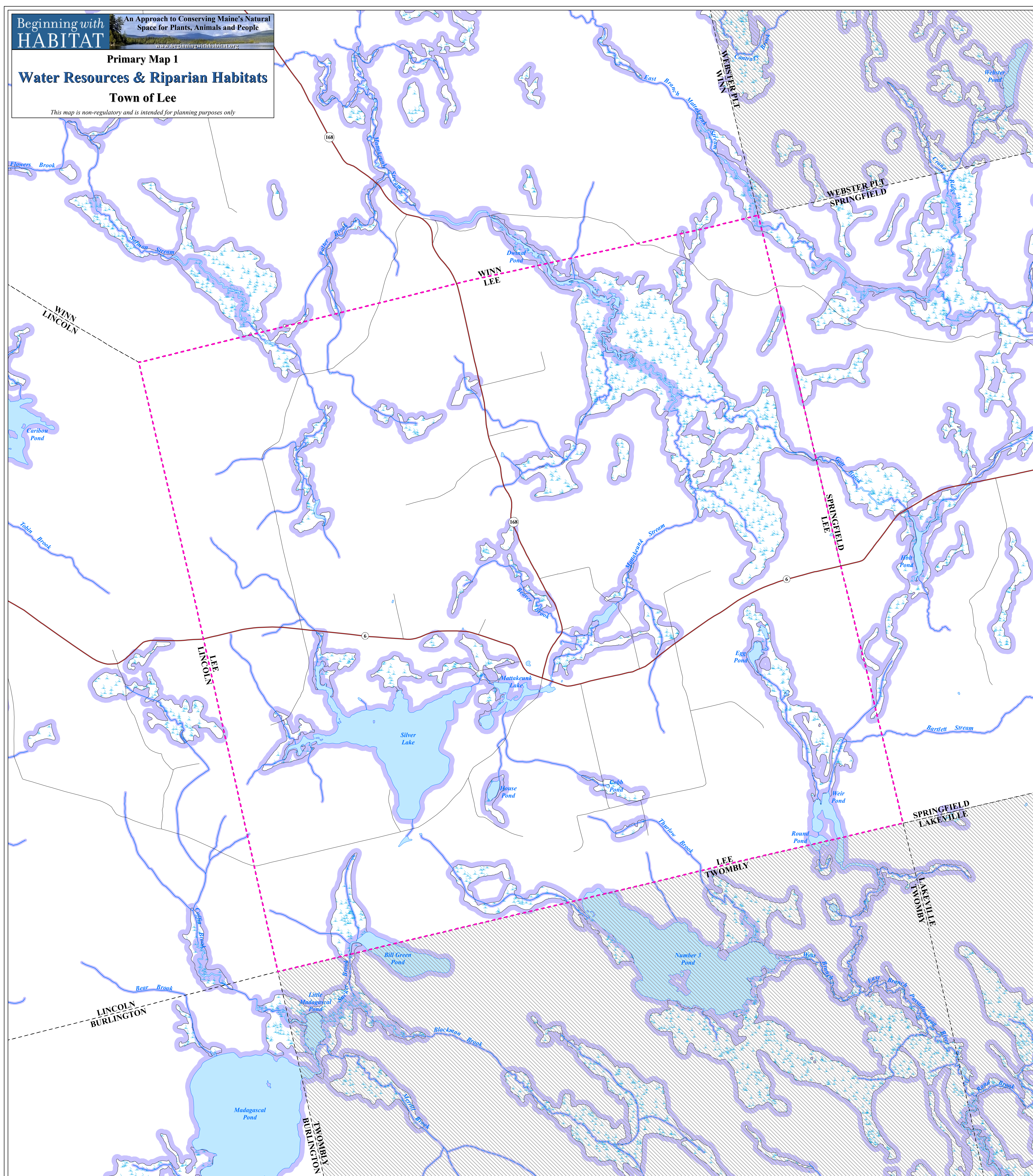


Primary Map 1
Water Resources & Riparian Habitats
Town of Lee

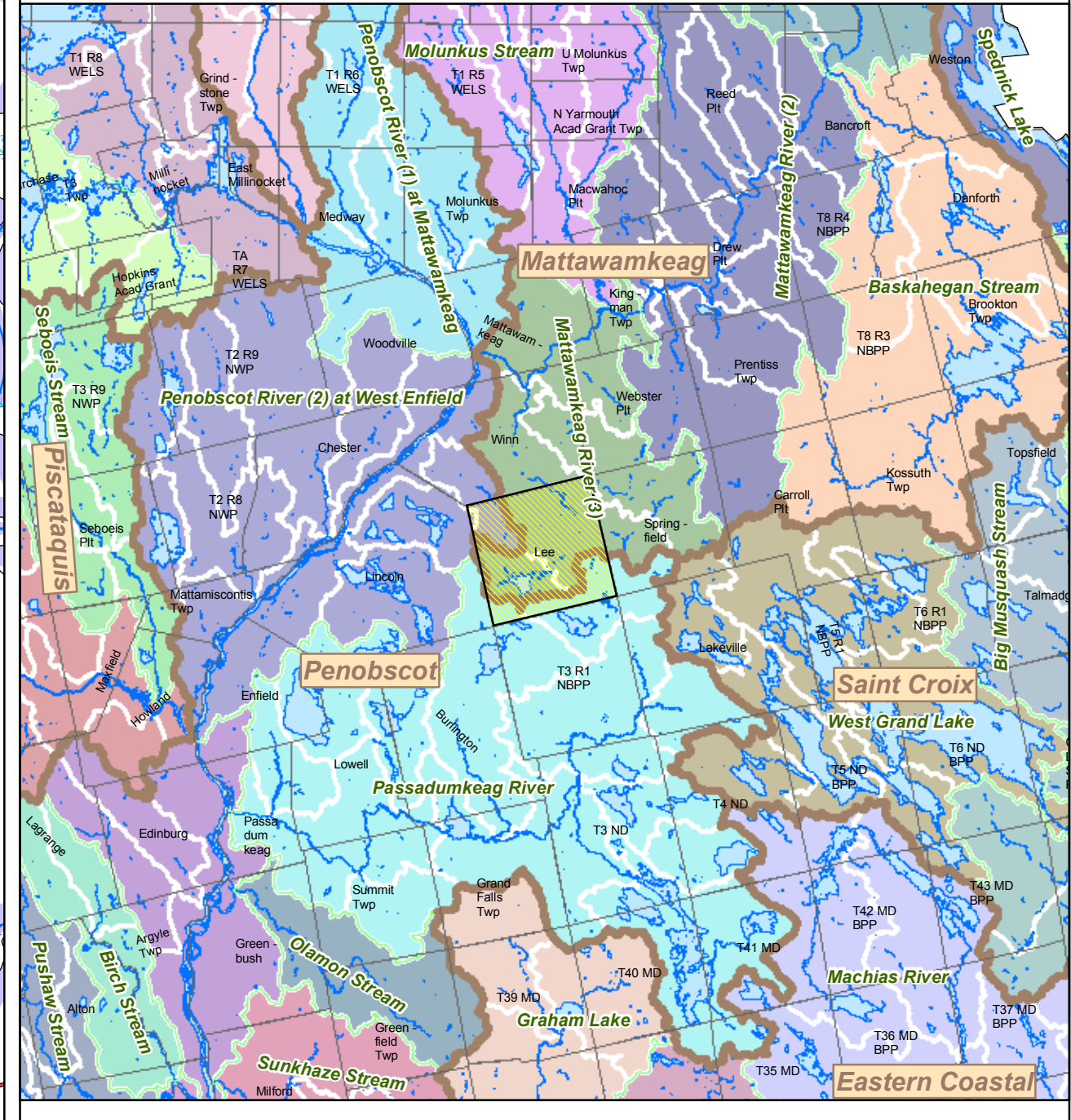
This map is non-regulatory and is intended for planning purposes only



LEGEND

- This map represents potential riparian habitat and may include areas affected by development.**
- Rivers, Streams, and Brooks
 - Ocean, Lakes, and Ponds
 - NWI Wetlands ≥ 10 Acres
The National Wetlands Inventory (NWI) uses aerial photographs from the mid-1980s to identify wetlands based on vegetation, hydrology, and geography. The NWI maps do not attempt to define the limits of proprietary jurisdiction of any federal, state, or local government. Ground verification should be used to supplement NWI wetland boundaries when more detailed or current information is needed.
 - Riparian Buffer
Ponds ≥ 10 acres (Great Ponds), rivers, coastal waters, and wetlands ≥ 10 acres in size are surrounded by a 250 foot buffer zone. Streams are surrounded by a 75 foot buffer zone.
 - Unorganized Township

Regional View of Watersheds



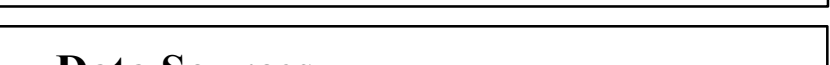
- Major NRCS Sub-basins
- NRCS Watersheds (shaded areas with green outlines)
- NRCS Subwatersheds (white outlines)

A watershed includes all the land area that drains to a particular lake, stream, river, estuary, or the ocean. Numerous watersheds that flow to a smaller lake or stream or directly to the ocean are "nested" within these relatively large watersheds. Within these watersheds are still smaller watersheds.

In the NRCS (National Resources Conservation Service) system, the generic term for a watershed or drainage area is "hydrologic unit." The formal terms sub-basin, watershed, and subwatershed refer to specific sizes of hydrologic units in the NRCS system:

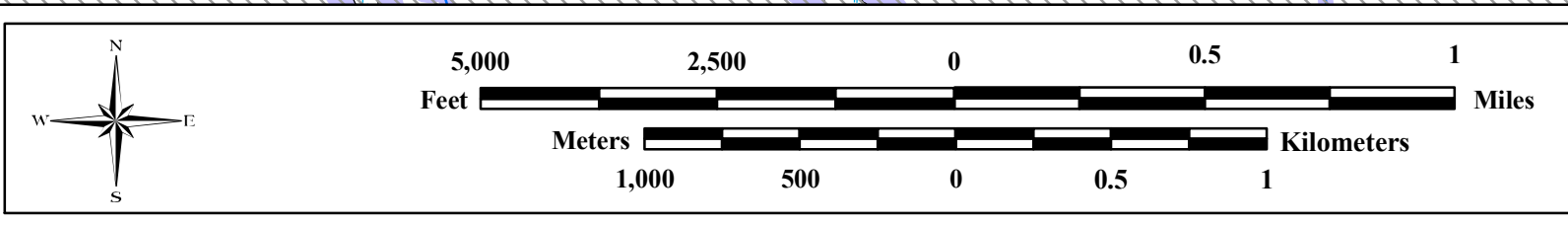
- Major NRCS Sub-basin. Subdivisions of basins. The average size is about 450,000 acres.
- NRCS Watershed. Subdivisions within a sub-basin. Average size is 40,000 to 250,000 acres.
- Subwatershed. Subdivisions within watersheds. Average size is 10,000 to 40,000 acres.

Inset Scale - 1:500,000



Data Sources

- HYDROLOGY**
Maine Office of GIS (1:24,000)
- NATIONAL WETLANDS INVENTORY**
U.S. Fish & Wildlife Service. For methods, see: Cowardin, L. M., Carter, V., Golet, F. C., and E. T. LaRoc. 1979. Classification of Wetlands and Deepwater Habitats of the United States. U.S. Dept. of Interior, Fish and Wildlife Service, Washington D. C., 131pp.
- RIPARIAN BUFFERS**
Analysis by Maine Natural Areas Program based on hydrology from Maine Office of GIS.
- ROADS, TOWN BOUNDARIES**
Maine Office of GIS (1:24,000)



1:24,000 Scale
 Universal Transverse Mercator (UTM) Projection
 North American Datum (NAD) 1983

