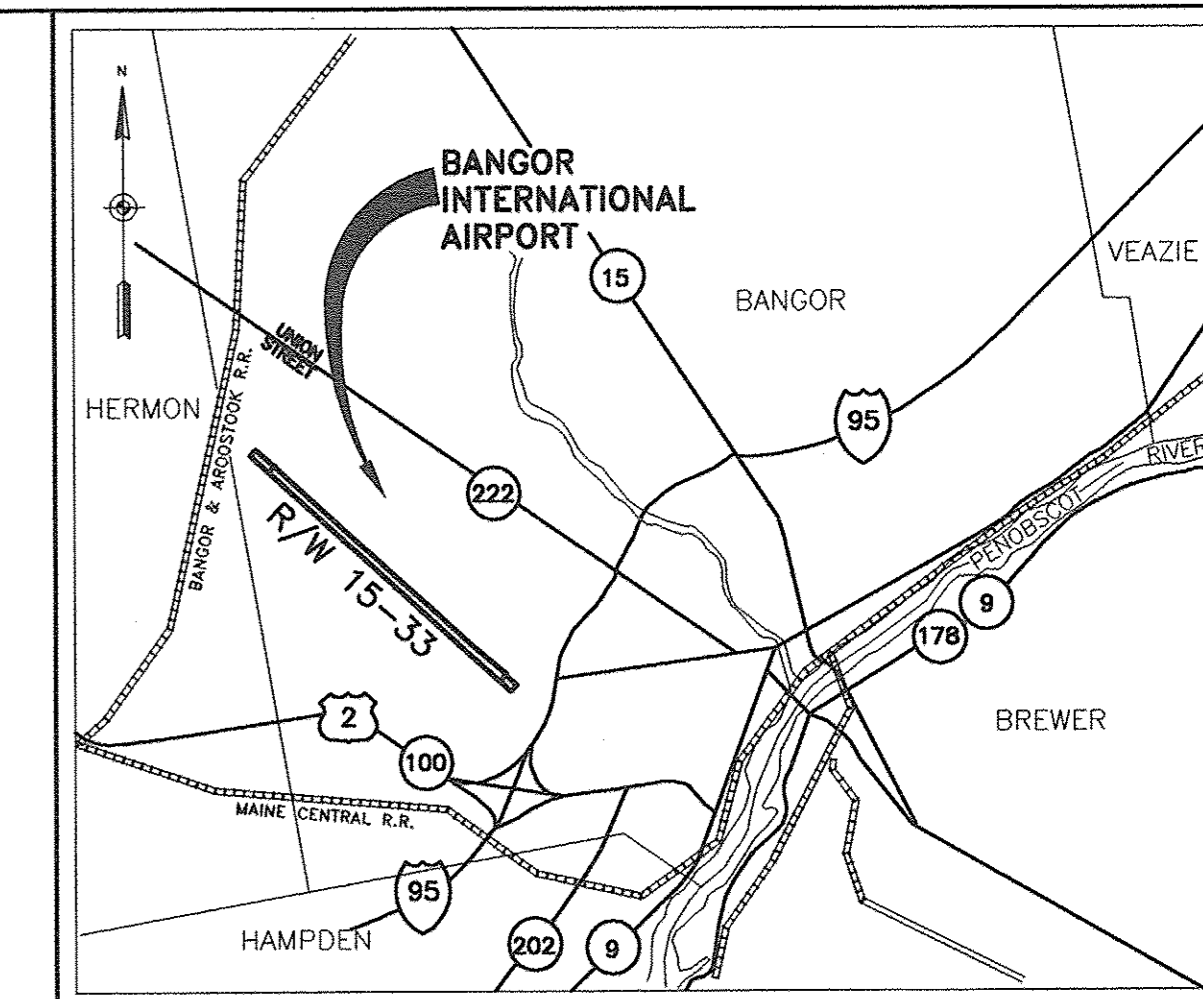


VICINITY MAP



LOCATION MAP

MASTER PLAN UPDATE

AIP No. 3-23-0005-56-2012

INDEX TO DRAWINGS

REV.	DATE

1. TITLE SHEET
2. AIRPORT DATA SHEET
3. EXISTING AIRPORT LAYOUT PLAN
4. ULTIMATE AIRPORT LAYOUT PLAN
5. TERMINAL AREA PLAN
6. AIRPORT AIRSPACE DRAWING
7. INNER PORTION OF THE APPROACH SURFACE - RUNWAY 15
8. INNER PORTION OF THE APPROACH SURFACE - RUNWAY 33
9. DEPARTURE SURFACE PLAN

U.S. DEPARTMENT OF TRANSPORTATION
FEDERAL AVIATION ADMINISTRATION
NEW ENGLAND REGIONAL HEADQUARTERS
AIRPORTS DIVISION - ANE 600

APPROVED: *[Signature]*

DATE: 2-1-17

APPROVAL SUBJECT TO COMMENTS AND
RECOMMENDATIONS LETTER

BANGOR INTERNATIONAL AIRPORT
THE CITY OF BANGOR MAINE

[Signature]
ANTHONY P. CARUSO JR. - AIRPORT DIRECTOR

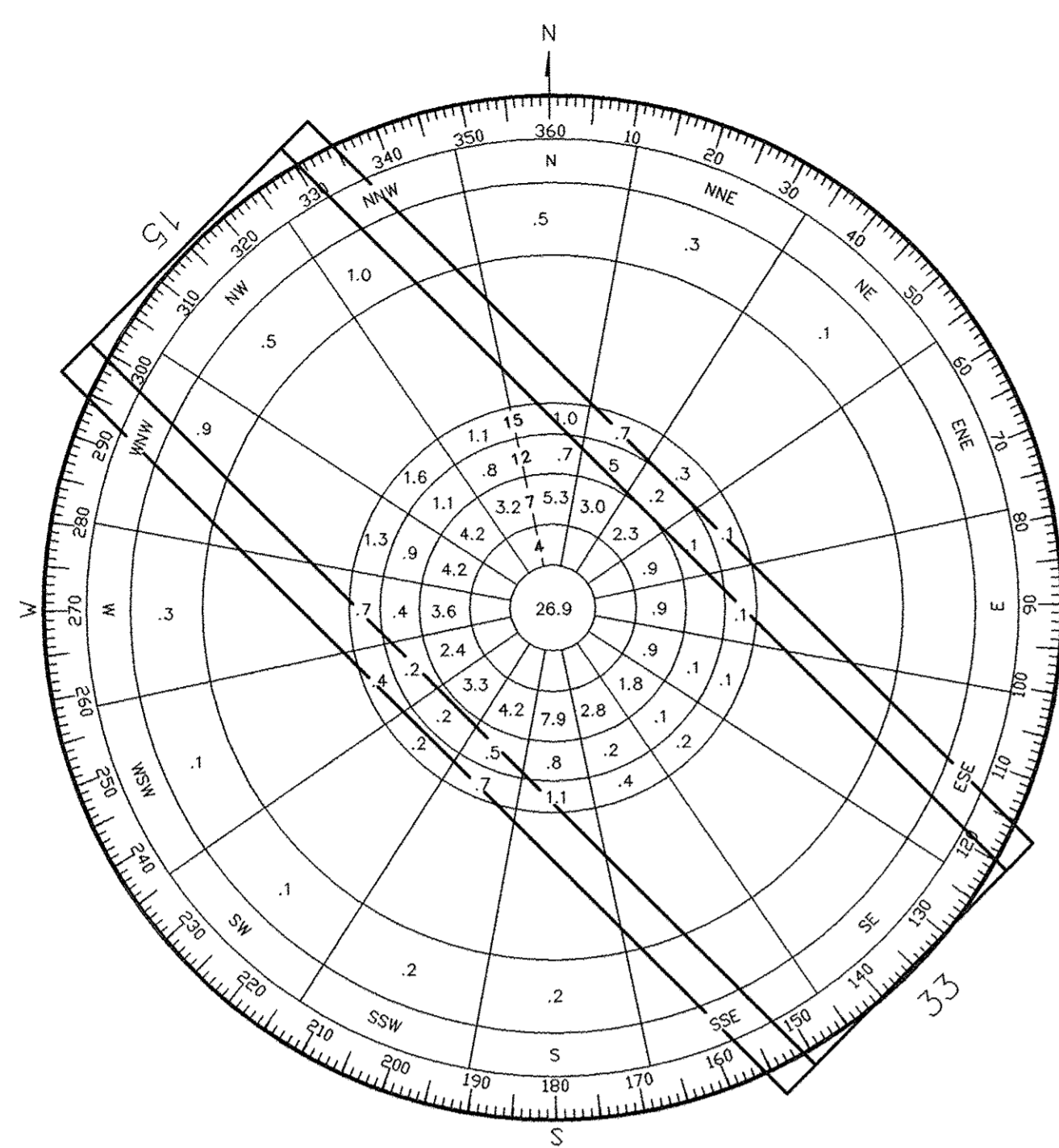
DATE: 12/5/2016

MAINE DEPARTMENT OF TRANSPORTATION
BUREAU OF PLANNING
AVIATION PROGRAM

[Signature]
DIRECTOR

DATE: 1-11-17

UPDATED DECEMBER 2015

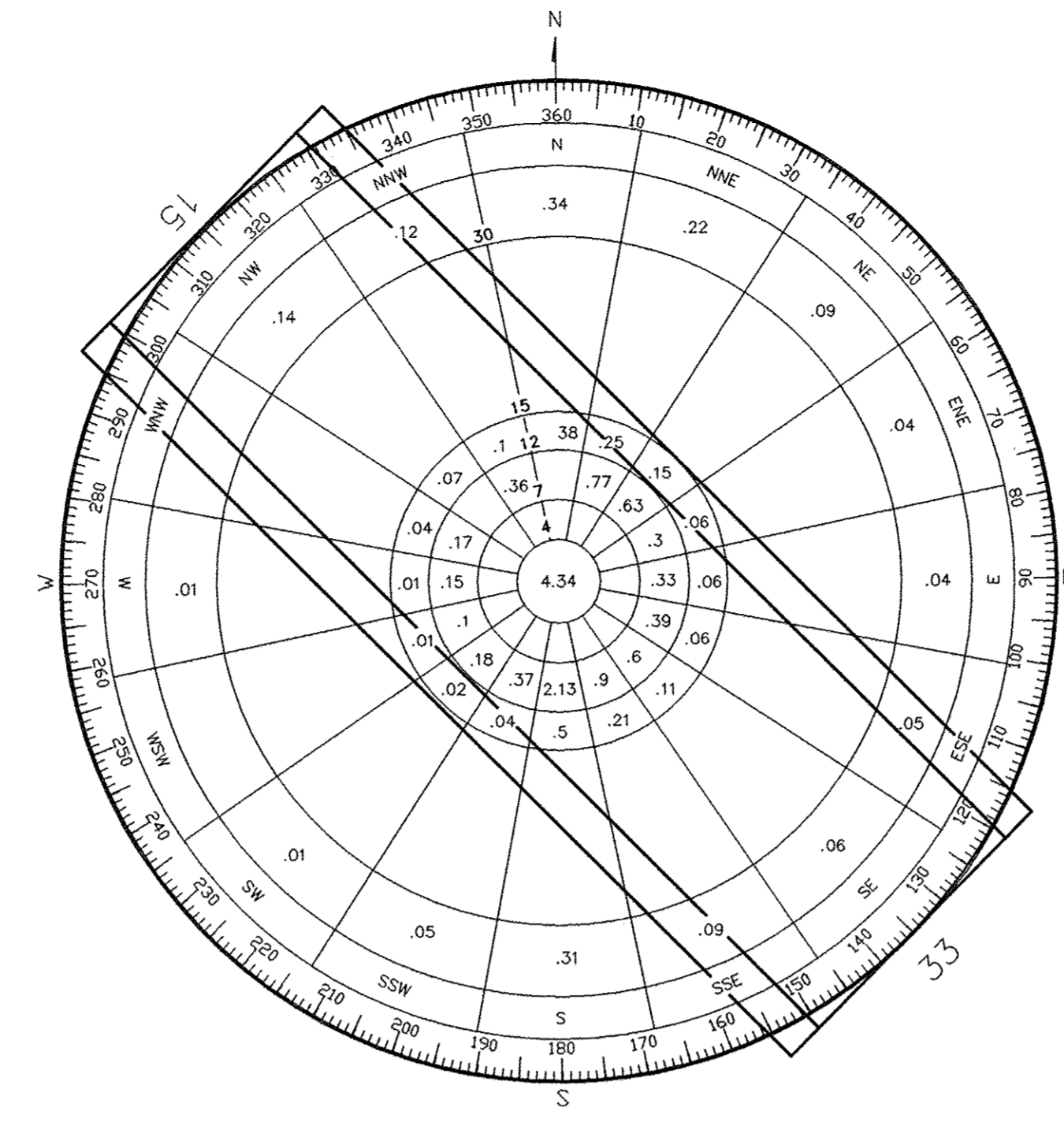


ALL WEATHER WIND ROSE

WIND COVERAGE

	12 MPH	15 MPH
RUNWAY 15	51.7%	53.3%
RUNWAY 33	66.9%	69.3%
COMBINED	91.7%	95.7%
CALMS	26.9%	

SOURCE: NATIONAL CLIMATIC CENTER - FEDERAL BUILDING
ASHEVILLE, NORTH CAROLINA
PERIOD: DECEMBER, 1941 - MARCH, 1965

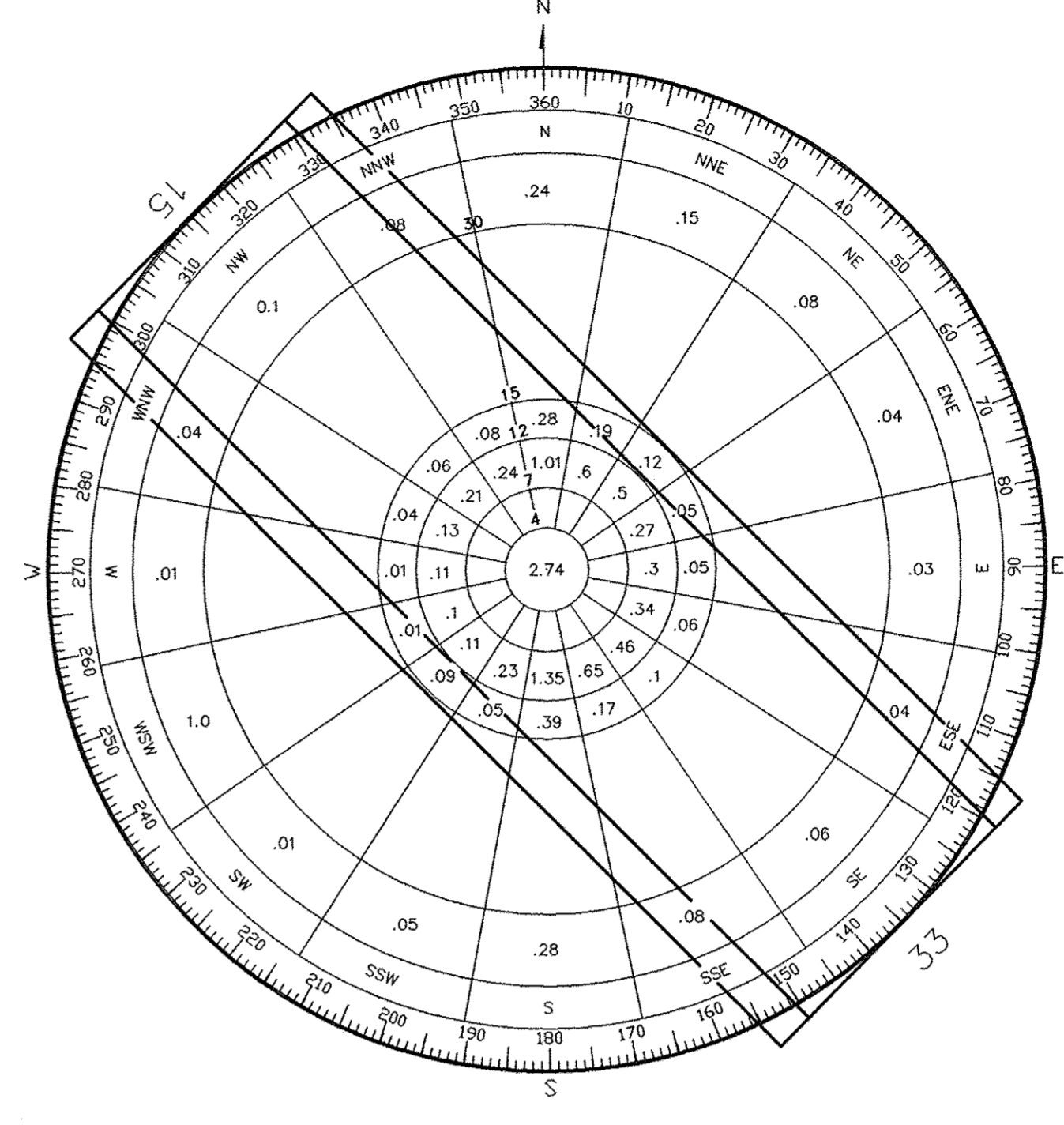


IFR WIND ROSE

WIND COVERAGE

	12 MPH	15 MPH
RUNWAY 15	62.7%	64.2%
RUNWAY 33	50.5%	52.3%
COMBINED	88.0%	91.3%
CALMS	25.2%	

SOURCE: NATIONAL CLIMATIC CENTER - FEDERAL BUILDING
ASHEVILLE, NORTH CAROLINA
PERIOD: JANUARY, 1955 - DECEMBER, 1964



ILS WIND ROSE

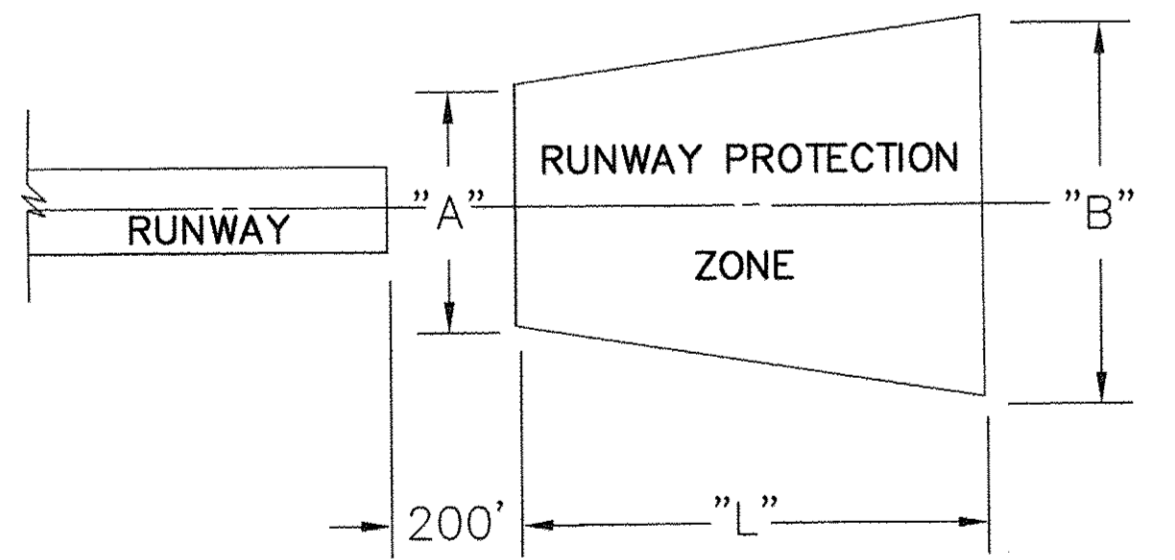
WIND COVERAGE

	12 MPH	15 MPH
RUNWAY 15	64.6%	66.9%
RUNWAY 33	48.4%	50.8%
COMBINED	90.7%	95.3%
CALMS	22.3%	

SOURCE: NATIONAL CLIMATIC CENTER - FEDERAL BUILDING
ASHEVILLE, NORTH CAROLINA
PERIOD: DECEMBER, 1941 - MARCH, 1965

RUNWAY PROTECTION ZONE

RUNWAY	CATEGORY	"L"	"A"	"B"
15	PRECISION-CAT III	2,500'	1,000'	1,750'
33	PRECISION-CAT I	2,500'	1,000'	1,750'



AIRPORT DATA

ITEM	EXISTING
AIRPORT ELEVATION (U.S.G.S.-M.S.L.)	192.1
SERVICE LEVEL	COMM. SERV. PRIMARY
AIRPORT ROLE	LONG HAUL
MEAN MAX. TEMP. HOTTEST MONTH	78°
TERMINAL NAVAIDS	VORTAC, NDB, LOC, GS, ASR
COMBINED WIND COVERAGE (A/W) 12 MPH	91.7%
TAXIWAY WIDTH	75', 100'(TWY L)
TAXIWAY LIGHTING	MEDIUM INTENSITY
OWNER	CITY OF BANGOR
MAGNETIC DECLINATION	16°-35'-4"W
AIRCRAFT DESIGN GROUP	IV (KC-135R)
AIRCRAFT APPROACH SPEED CLASS	C (KC-135R)
AIRPORT REFERENCE POINT (ARP)	28°-48'-28.00"N 88°-41'-18.00"W
AIRPORT ACREAGE	1,700
ARFF INDEX	E
FAR PART 139 CERTIFICATION	FULL

AIRPORT BUILDINGS (MILITARY-LEASE)

BLDG	EXISTING
250	MAINE ARMY GUARD
260	MAINE ARMY GUARD
489	MAINE AIR GUARD
512	MAINE AIR GUARD
525	MAINE AIR GUARD
529	MAINE AIR GUARD
537	MAINE AIR GUARD
538	MAINE AIR GUARD
540	MAINE AIR GUARD
541	MAINE AIR GUARD
542	MAINE AIR GUARD

BUILDINGS (MILITARY-OWNED)

251	MAINE ARMY GUARD
254	MAINE ARMY GUARD
255	MAINE ARMY GUARD
260	MAINE ARMY GUARD
269	MAINE ARMY GUARD
417	MAINE AIR GUARD
418	MAINE AIR GUARD
420	MAINE AIR GUARD
421	MAINE AIR GUARD
422	MAINE AIR GUARD
424	MAINE AIR GUARD
425	MAINE AIR GUARD
428	MAINE AIR GUARD
464	MAINE AIR GUARD
491	MAINE AIR GUARD
492	MAINE AIR GUARD
493	MAINE AIR GUARD
494	MAINE AIR GUARD
495	MAINE AIR GUARD
496	MAINE AIR GUARD
497	MAINE AIR GUARD
499	MAINE AIR GUARD
500	MAINE AIR GUARD
505	MAINE AIR GUARD
510	MAINE AIR GUARD
513	MAINE AIR GUARD
514	MAINE AIR GUARD
515	MAINE AIR GUARD
524	MAINE AIR GUARD
528	MAINE AIR GUARD

AIRPORT BUILDINGS (CIVILIAN)

BLDG	EXISTING
1	HOTEL
2	DOMESTIC TERMINAL BUILDING
3	INTERNATIONAL TERMINAL BUILDING
4	RENTAL CAR
95	UTILITY BUILDING
96	FAA SECTOR OFFICE
97	FESSENDEN GEO-ENVIRONMENTAL SERVICES
100	AIRFIELD MAINTENANCE
115	C&L AEROSPACE
121	GENERAL AVIATION TERMINAL
252	GENERAL AVIATION HANGAR
253	NATIONAL CAR RENTAL/BGR FACILITIES MAINTENANCE
258	HANNAFORD BROTHERS
266	JERRY'S CATERING
268	JERRY'S CATERING
270	OFFICE BLDG
271	ENTERPRISE OFFICE
272	OFFICE BLDG
340	FAA TRANSMISSION TOWER
457	AIRCRAFT HANGAR-LEASE/RENT
461	AIRCRAFT SERVICE HANGAR
462	AIRCRAFT SERVICE HANGAR
463	AIRCRAFT SERVICE HANGAR
464	AIRCRAFT SERVICE HANGAR
486	GENERAL ELECTRIC
487	GENERAL ELECTRIC
488	GENERAL ELECTRIC
489	GENERAL ELECTRIC
490	GENERAL ELECTRIC

AIRPORT BUILDINGS (CIVILIAN)

BLDG	EXISTING
501	MAINE ANG
504	MAINE ANG
508	FAA
509	FAA
511	FAA ATC TOWER
512	ARFF STATION (FIRE STATION)
535	FAA AIRPORT SURVEILLANCE RADAR (ASR) ANTENNA
600	C&L AEROSPACE
610	VACANT
612	VACANT
N/A	AIRPORT FUEL FARM

RUNWAY 15-33 DATA

	EXISTING	FUTURE
LENGTH	11,440'	SAME
WIDTH	200'	SAME
SAFETY AREA WIDTH/LENGTH	500'/1,000'	SAME
PVMT. STRENGTH (x1,000 LBS)	S-100 D-210 D1-400	SAME
PAVEMENT TYPE	CONC. W/BIT. OVERLAY	SAME
RUNWAY LIGHTING	TOUCHDOWN ZONE & CENTER LINE & HIRL	SAME
RUNWAY MARKING	PRECISION	SAME
EFFECTIVE GRADIENT (%)	0.36%	SAME
APPROACH AIDS	R/W 15-ALSF-II, PAPI R/W 33-MALS, PAPI	SAME
NAVIGATIONAL AIDS	R/W 15 CAT III ILS R/W 33 CAT I ILS	SAME
FAR 77 CATEGORY	PRECISION	SAME
APPROACH SURFACE SLOPE	50:1/40:1	SAME
ELEVATION	R/W 15 192' R/W 33 163'	SAME

AIRPORT DATA SHEET

Rev.	Date	By	Description

Designed by:	HJM	Checked by:	HJM
Drawn by:	KLH	Reviewed by:	HJM
Submitted by:	JRH	File name:	Dec-2015
		Proj date:	Dec-2015
		Proj scale:	

BANGOR INTERNATIONAL AIRPORT
BANGOR, MAINE
JACOBS
TWO EXECUTIVE PARK DRIVE
SUITE 205
BEDFORD, NH 03110



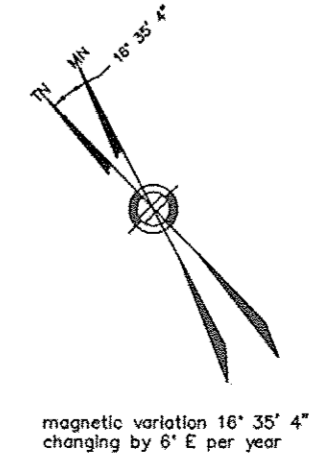
Sheet reference number:
2

PROJECT: BANGOR INTERNATIONAL AIRPORT; DRAWING: AIRPORT DATA SHEET; DATE: 12/1/2015; SCALE: AS SHOWN; DRAWN BY: KLH; CHECKED BY: HJM; DESIGNED BY: HJM; SUBMITTED BY: JRH; FILE NAME: Dec-2015; PROJ DATE: Dec-2015; PROJ SCALE: AS SHOWN



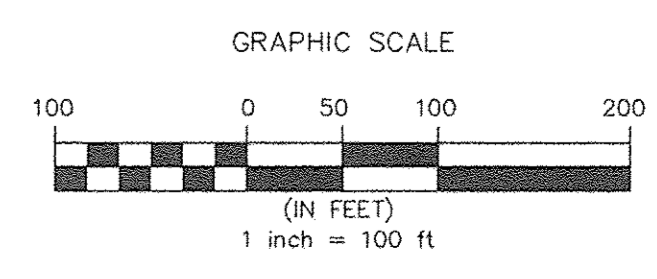
LEGEND	
[Solid Grey]	ROADS
[Dotted Grey]	ON-AIRPORT BUILDING
[Light Grey]	PROPOSED PAVEMENT
[Medium Grey]	PROPOSED CONSTRUCTION
[Dark Grey]	TO BE REMOVED
[x]	BUILDING ELEV./MSL
[Dashed Line]	CONTOUR LINES (2' INTERVAL)
[x-x]	FENCE

BLDG	DESCRIPTION
1	HOTEL
2	DOMESTIC TERMINAL BUILDING
3	INTERNATIONAL TERMINAL BUILDING
4	RENTAL CARS
457	HANGAR-LEASE/RENT
461	MAINTENANCE & EQUIPMENT HANGAR
462	AIRCRAFT SERVICE HANGAR
463	HANGAR
464	AIRCRAFT SERVICE HANGAR
466	GENERAL ELECTRIC
489	GENERAL ELECTRIC
490	GENERAL ELECTRIC
501	MAINE ANG TRAILER
504	MAINE ANG TRAILER



magnetic variation 16° 35' 4" W
changing by 6" E per year

NOTES:
1. REFER TO DATA SHEET FOR BUILDING NUMBER LEGEND AND OTHER PERTINENT DATA.



TERMINAL AREA PLAN

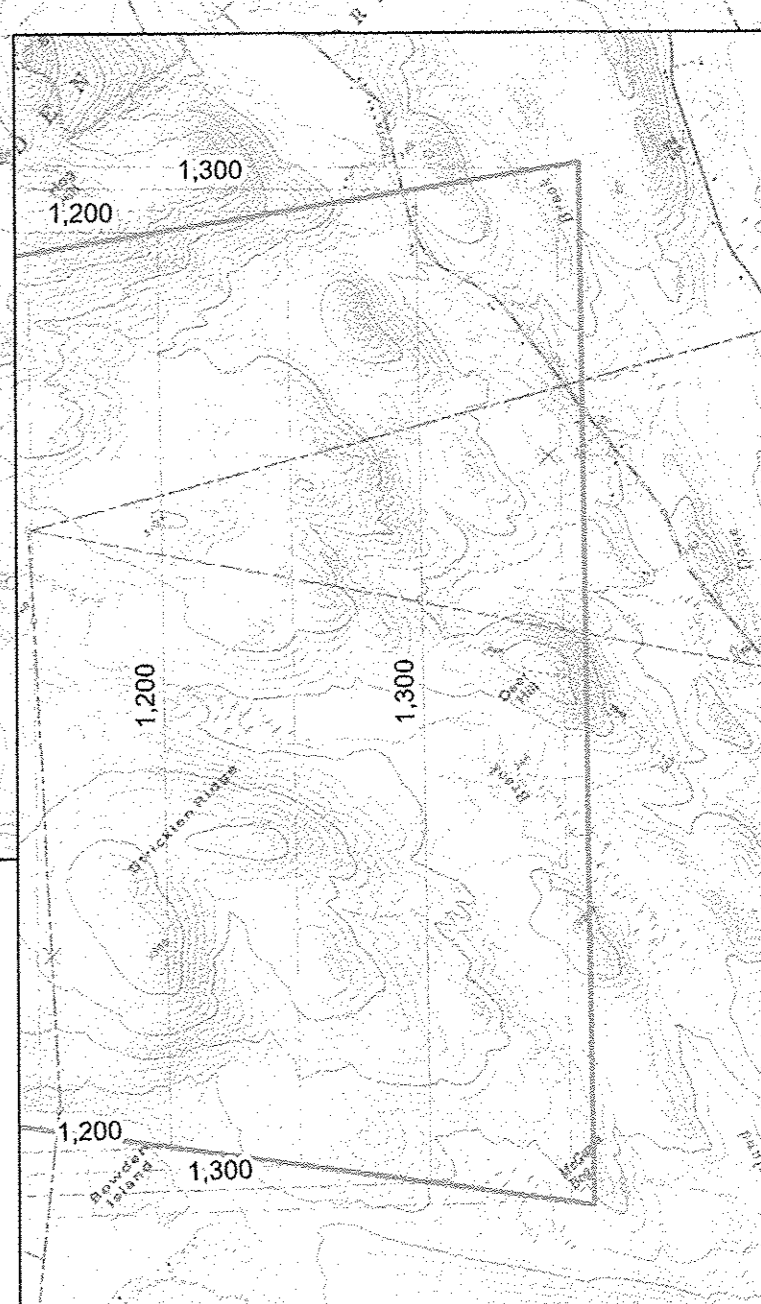
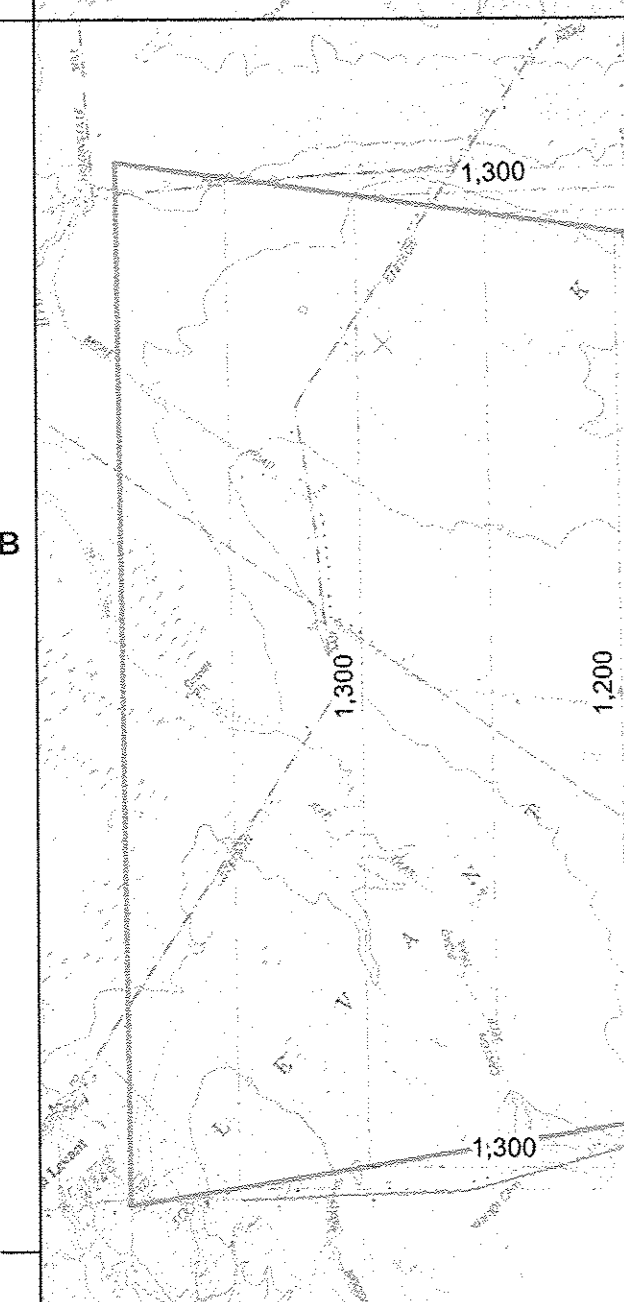
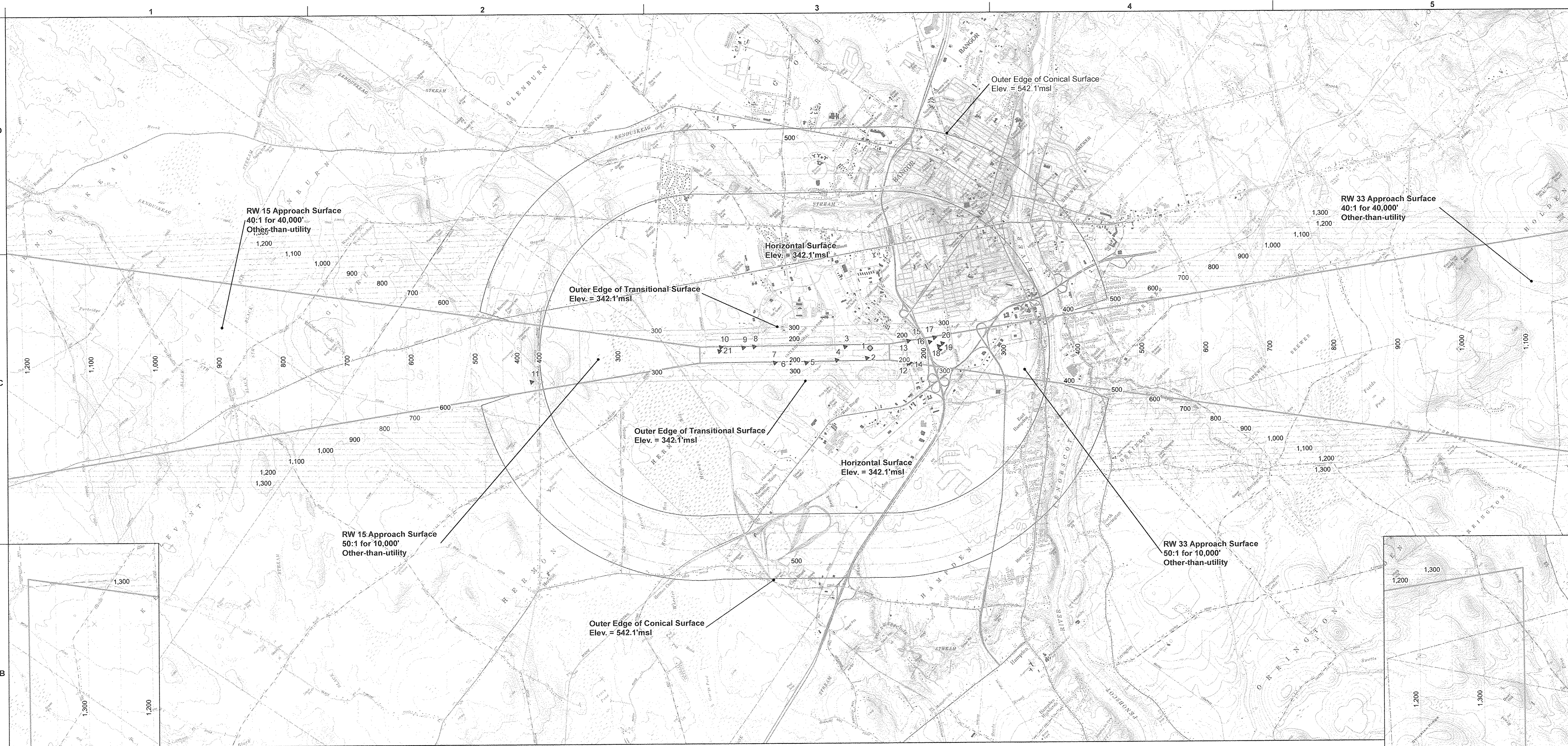
Rev.	Date	Description	Appr.

Designed by:	HHM	Checked by:	HHM
Dwn by:	KLH	Reviewed by:	HHM
Submitted by:	JRH	File name:	Doc 0015
		Plot scale:	1" = 100'

BANGOR INTERNATIONAL AIRPORT
BANGOR
MAINE
JACOBS
TWO EXECUTIVE PARK DRIVE
BEDFORD, NH 03110



Sheet reference number:
5 OF 3



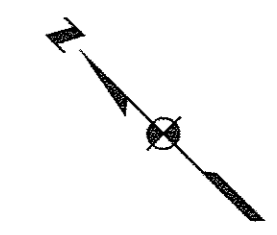
OBSTRUCTION TABLE

POINT#	OBJECT	HEIGHT MSL (FT.)	DIST. FROM RW END	DIST. FROM RW CENTERLINE	PENETRATION AIRSPACE SURFACE AMOUNT (FT.)	RUNWAY END
1	OL ON WSK	164	989	260R	7	Primary 33
2	ROD ON OL.GS	191	-10202	315R	36	Primary 15
3	OL.WDI	161	-8844	415L	10	Primary 15
4	BUSH	157	-8317	408R	3	Primary 15
5	BUSH	175	-6401	547R	9	Transitional 15
6	BUSH	176	-5442	507R	4	Transitional 15
7	BUSH	181	-4445	513R	4	Transitional 15
8	GRD	189	-3160	495L	4	Primary 15
9	OL ON POLE	198	-2488	454L	11	Primary 15
10	ROD ON OL.GS	237	-1090	500L	47	Primary 15
11	TREE	410	10762	1466R	3	Approach 15
12	TREE	193	1311	689L	8	Transitional 33
13	TREE	188	1358	715R	2	Transitional 33
14	TREE	190	1435	663L	2	Approach 33
15	TREE	211	2180	774R	9	Approach 33
16	TREE	232	2701	631R	19	Approach 33
17	TREE	228	2986	893R	9	Approach 33
18	TREE	228	3256	358R	4	Approach 33
19	TREE	233	3318	106R	7	Approach 33
20	TREE	236	3486	532R	8	Approach 33
21	OL ON WSK	199	981	261L	9	Primary 15

Legend

- FAR CFR PART 77 OBSTRUCTIONS
 - ▲ Source: FAA Digital Obstacle File 2004
- FAR PART 77 AIRSPACE SURFACES
 - Approach Surface (50:1 slope then 40:1)
 - Conical Surface (20:1 slope)
 - Primary Surface
 - Transitional Surface (7:1 slope)
 - Airspace Contours (50' interval)

Remainder of R/W 33 Approach Surface



AIRPORT AIRSPACE DRAWING

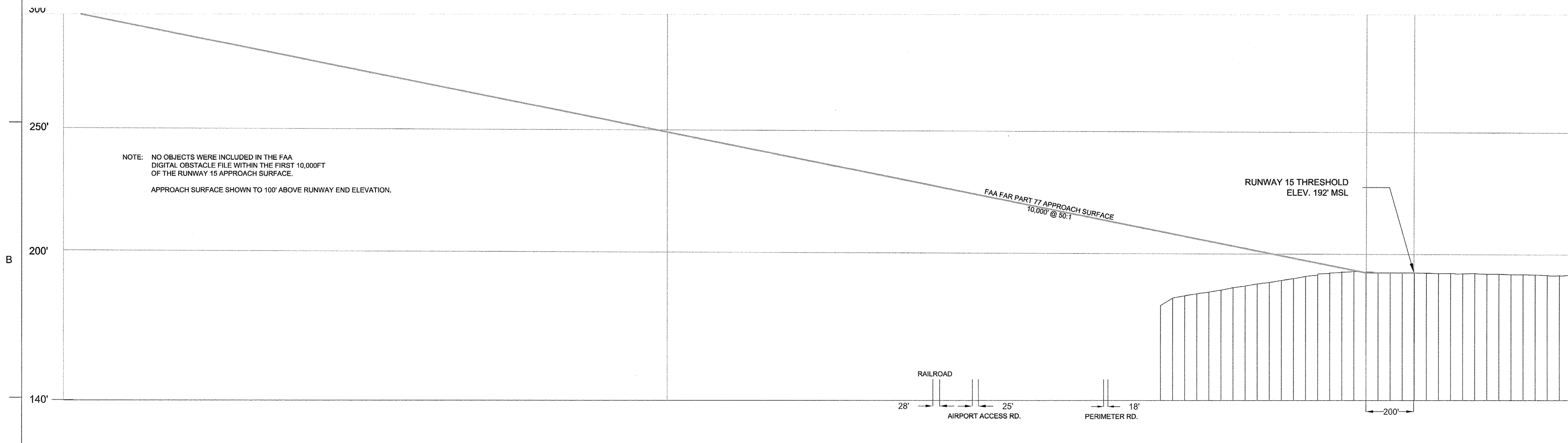
Mark	Description	Date	Appr.

Designed by: HHM
 Drawn by: KLH
 Reviewed by: HHM
 Submitted by: HHM

Date: DECEMBER 2015
 Design file no.:
 Drawing code:
 File name: 12/2015
 Plot date: 12/2015
 Plot scale: 1" = 3,000'

BANGOR INTERNATIONAL AIRPORT
 BANGOR MAINE
JACOBS
 TWO EXECUTIVE PARK DRIVE
 BEDFORD, NH 03110

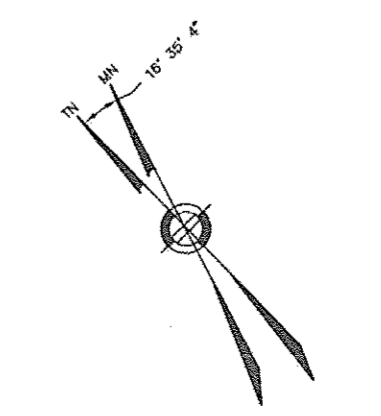
Sheet reference number:
6
 6 OF 9



NOTE: NO OBJECTS WERE INCLUDED IN THE FAA DIGITAL OBSTACLE FILE WITHIN THE FIRST 10,000FT OF THE RUNWAY 15 APPROACH SURFACE.
APPROACH SURFACE SHOWN TO 100' ABOVE RUNWAY END ELEVATION.

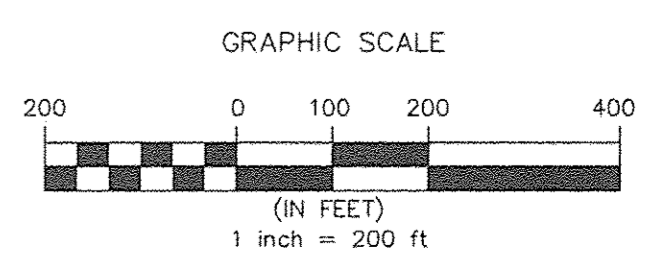
LEGEND	
	APPROACH SURFACE
	PRIMARY SURFACE

NOTES:
1. OBSTACLE SOURCE FAA DIGITAL OBSTRUCTION FILE MAY 2004 AND NGS FIELD SURVEY JULY 2004.



magnetic variation 16° 35' 4" W
changing by 6" E per year

SCALE 1" = 200' HORIZONTAL
1" = 10' VERTICAL



Sheet reference number:
7
7 OF 9

INNER PORTION OF THE APPROACH SURFACE RUNWAY 15

Mark	Description	Date	App

Designed by:	HMM	Checked by:	HMM	Date:	12/11/2015
Drawn by:	KLH	Reviewed by:	HMM	Design file no.:	
Submitted by:	JRH	File name:	Doc 2015	Plot scale:	See Plan

BANGOR INTERNATIONAL AIRPORT
BGR
BANGOR INTERNATIONAL AIRPORT
JACOBS
TWO EXECUTIVE PARK DRIVE
SUITE 205
BEDFORD, NH 03110



Sheet reference number:
7
7 OF 9

