

University of Maine
Cooperative Extension
PO Box 727
Presque Isle, ME 04769



POTATO IPM PROGRAM LATE BLIGHT IDENTIFICATION

FOR MAINE ROADSIDE STAND PRODUCERS

*From
The University of Maine
Cooperative Extension
and
The Maine Potato Board*



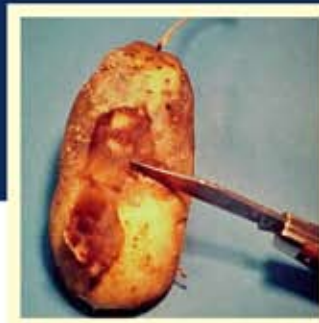
Potato Late Blight Identification for Roadside Stand Producers

Potato late blight is an extremely serious disease for all potato producers in the state of Maine. **Early detection is critical for management of this disease.**

Potato late blight will appear on leaves as a pale green irregular spot. These areas will enlarge rapidly and will look like a water soaked "grease spot"; often these areas will have a yellow halo around the infected area. A white mildew ring will often form around the necrotic area.

Stems and petioles will turn brown when infected. Stems and petioles will be very brittle when infected with late blight; white mycelium may be present under moist conditions.

During the growing season, the latest potato crop information can be found on the web at www.maineipotatoipm.com or www.umaine.edu/umext/potatoprogram or by calling **1-888-USE-UMCE** or **207-760-9ipm**



Tubers are readily infected in the soil by water movement of spores. Initial tuber infection will have a brownish discoloration of skin. Under the skin, the flesh will appear reddish brown with a granular texture.

In moist weather, late blight spreads rapidly; and all plants in a field can become infected. Diseased and decaying plants give off a strong noticeable odor.

Potato late blight can be spread by windblown spores from infected plants. Please remember all fungicides, synthetic or organic materials are protectant only and need to be applied before the disease is present. Producers are strongly encouraged to examine their crop on a regular basis. If you have suspect plant samples, please contact your local Cooperative Extension office for identification.

Please remember potato late blight can impact all growers, and all growers need to work together to prevent late blight from becoming a costly epidemic for the Maine potato industry.

Published and distributed in furtherance of Acts of Congress of May 8 and June 30, 1914, by the University of Maine Cooperative Extension, the Land Grant University of the state of Maine and the U.S. Department of Agriculture cooperating. Cooperative Extension and other agencies of the USDA provide equal opportunities in programs and employment. 607 . "A member of the University of Maine System."

Prepared by: James Dwyer, Crops Specialist, University of Maine Cooperative Extension; Tim Hobbs, Director of Grower Relations, Maine Potato Board and James Dill, Pest Management Specialist, University of Maine Cooperative Extension