

POTATO IPM PROGRAM

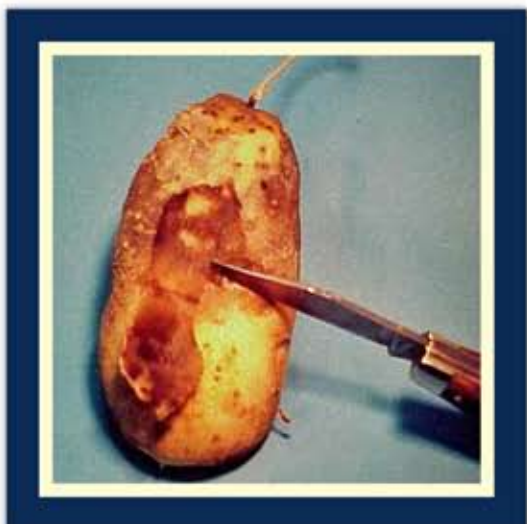
LATE BLIGHT IDENTIFICATION



Potato late blight will appear on leaves as a pale green irregular spot. These areas will enlarge rapidly and will look like a water soaked "grease spot", often these areas will have a yellow halo around the infected area. A white mildew ring will often form around the necrotic area.



Stems and petioles will turn brown, almost black in color, when infected. Stems and petioles will be very brittle when infected with late blight; white mycelium may be present under moist conditions.



Tubers are readily infested in the soil by water movement of spores. Initial tuber infection will have a brownish discoloration of the skin. Under the skin, the flesh will appear reddish brown with a granular texture.

In moist weather, late blight spreads rapidly and all plants in a field can become infected. Diseased and decaying plants give off a fetid odor.



Prepared by:
James Dwyer, Crops Specialist
Dr. James Dill, Pest Management Specialist
Erin Hoffses, IPM Program

The Land Grant University of the State of Maine and the U.S. Department of Agriculture cooperating.
Cooperative Extension provides equal opportunities in programs and employment.