

Asian Longhorned Beetle Lookalikes

(all insects shown approximately to scale, sizes given do not include antennae)

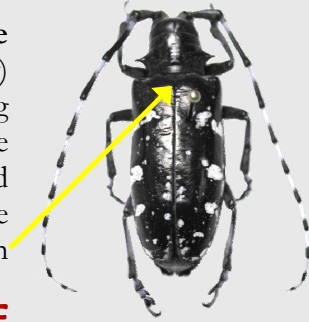
Asian longhorned beetle

(*Anoplophora glabripennis*)

$\frac{3}{4}$ – 1½ inches long

Glossy black with distinct white splotches; long distinctly banded black and white antennae

Black scutellum



NOT FOUND IN MAINE

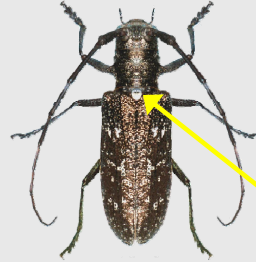
Whitespotted sawyer

(*Monochamus scutellatus*)

$\frac{3}{4}$ – 1 inch long

Dull or bronzy-black, may be mottled with whitish patches; long faintly banded antennae

White scutellum



FOUND IN MAINE

Northeastern sawyer

(*Monochamus notatus*)

$\frac{3}{4}$ – 1¼ inch long

Mottled light brown/white, no distinct spots



FOUND IN MAINE

Poplar borer

(*Saperda calcarata*)

About 1 inch long

Bluish-gray with faint yellow splotches



FOUND IN MAINE

Brown prionid

(*Orthosoma brunneus*)

1 – 1½ inches long

Light chestnut brown, no spots



FOUND IN MAINE

Broadnecked root borer

(*Prionus laticollis*)

1 – 1½ inches long

Black with no white markings; solid black antennae



FOUND IN MAINE

A Longhorned Beetle

(*Graphisurus fasciatus*)

$\frac{1}{3}$ – $\frac{2}{3}$ inch long

Dark with gray to light brown mottling; antennae banded white and black



FOUND IN MAINE

Western conifer seed bug

(*Leptoglossus occidentalis*)

About $\frac{3}{4}$ inch long

Various shades of brown with a distinct geometric pattern on wings



FOUND IN MAINE

Maine Department of Agriculture

207-287-3891

www.albmaine.org

Photos: Asian longhorned beetle and Poplar borer—Pennsylvania Department of Conservation and Natural Resources - Forestry Archive, Bugwood.org; Whitespotted sawyer, Northeastern sawyer and Broadnecked root borer—Michael Bohne, USDA Forest Service; Brown prionid—Kristin Riolo, Priceless Memories, Bugwood.org; *Graphisurus fasciatus*—Jennifer Forman Orth, Massachusetts Department of Agricultural Resources.