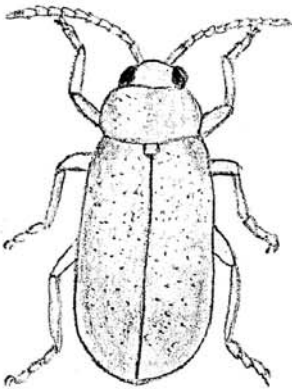


AGRICULTURE PEST SHEET - MAINE DEPARTMENT OF AGRICULTURE
28 STATE HOUSE STATION, AUGUSTA ME 04333

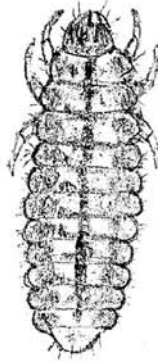
VIBURNUM LEAF BEETLE
Pyrrhalta viburni (Paykull)

DISTRIBUTION- The viburnum leaf beetle is a eurasian insect. The first breeding population in North America was discovered in 1978 in areas of Ontario and Quebec, Canada, but the beetle was probably introduced some years earlier. The first United States populations were found in Maine in 1994. The beetle has since spread to several northeastern states.

DESCRIPTION- The adult beetle is brownish and 4.5 to 6.5 mm (1/4") long. The larvae are dark colored and warty looking.



adult x6



larva x6



egg sites on twig x2

HOSTS- This pest seems to be limited to species of viburnum, particularly *Viburnum opulus* and *V. dentatum*.

DAMAGE- Both the larvae and the adult beetles skeletonize the foliage of viburnums. The larvae can cause heavier damage and in dense populations will eat all of the leaves except major veins. Adults may cause some twig tip dieback with heavy egg deposition.

LIFE CYCLE- The leaf beetle overwinters as eggs in twigs. From late summer until frost, the females chew holes (1X1 mm) in small twigs, one hole under another in a straight line for as much as 6 to 8" of the twig tip. Several eggs are deposited in each hole and these are covered with a cap composed of black excrement and chewed wood. A female may produce up to 500 eggs. In May of the following year, eggs hatch and the larvae begin feeding on young foliage. The larvae feed gregariously and complete their development in 8 to 10 weeks. The larvae pupate in the ground and adult beetles begin to appear by mid-July and may be found until the first frost.

CONTROL- Viburnum twigs with egg-filled holes may be pruned off any time before May to reduce populations of hatching larvae and thus help control the pest. Since it is new to the US, the viburnum leaf beetle will not appear specifically on insecticide labels. However, general purpose materials for leaf beetles and nursery/landscape use (such as acephate, carbaryl, imidacloprid, cyfluthrin and methoxychlor) should give good control if applied when the larvae begin feeding.

Before applying any pesticide, READ THE LABEL. Pesticides must be applied only as directed on the label to be in compliance with the law.