

PLS-CADD Drawing

REV:	DATE:	BY:	CHECKED:	APPROVED:	DATE:	DESCRIPTION:
A	12/17/2010	ARH	NSH	NSH		FOR PERMIT APPLICATION ONLY - NOT FOR CONSTRUCTION

DESIGNED:	DRAWN:	ARH	REVISION:	SCALE:	CHECKED:	APPROVED:
ARH	ARH	ARH	A	1"=200'H 1"=30'V	NSH	NSH

HIGHLAND WIND PROJECT
HIGHLAND PLANTATION, MAINE

DRAWING DESCRIPTION:
34.5kV OVERHEAD COLLECTOR SYSTEM
EAST COLLECTOR STRING

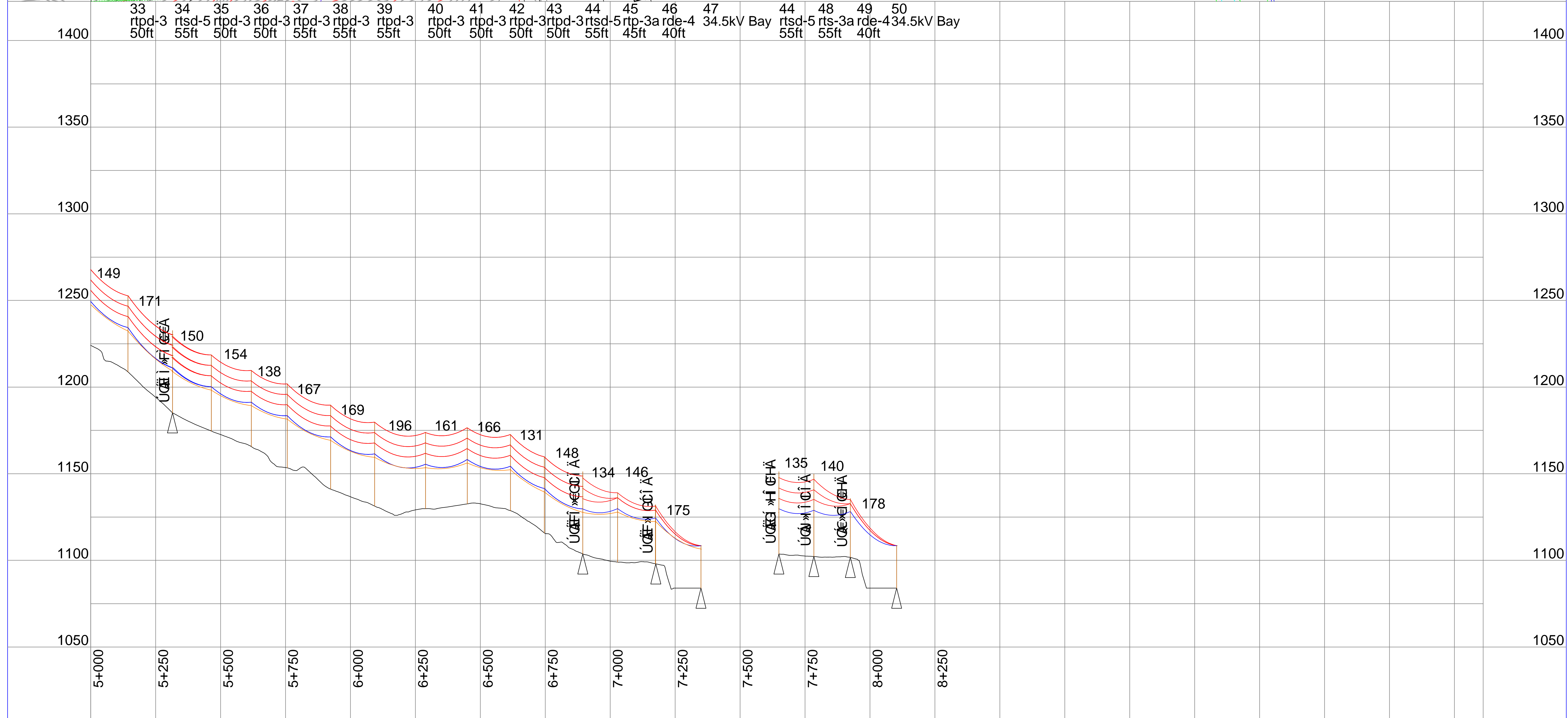
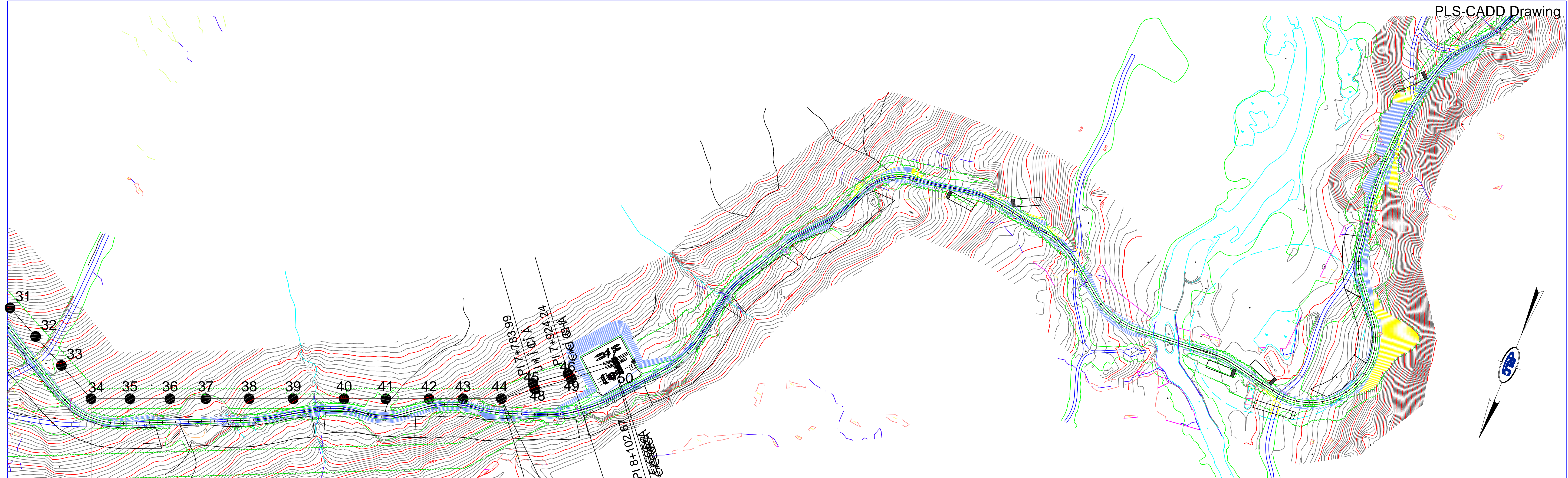
PROJECT # 14001

ENGINEER

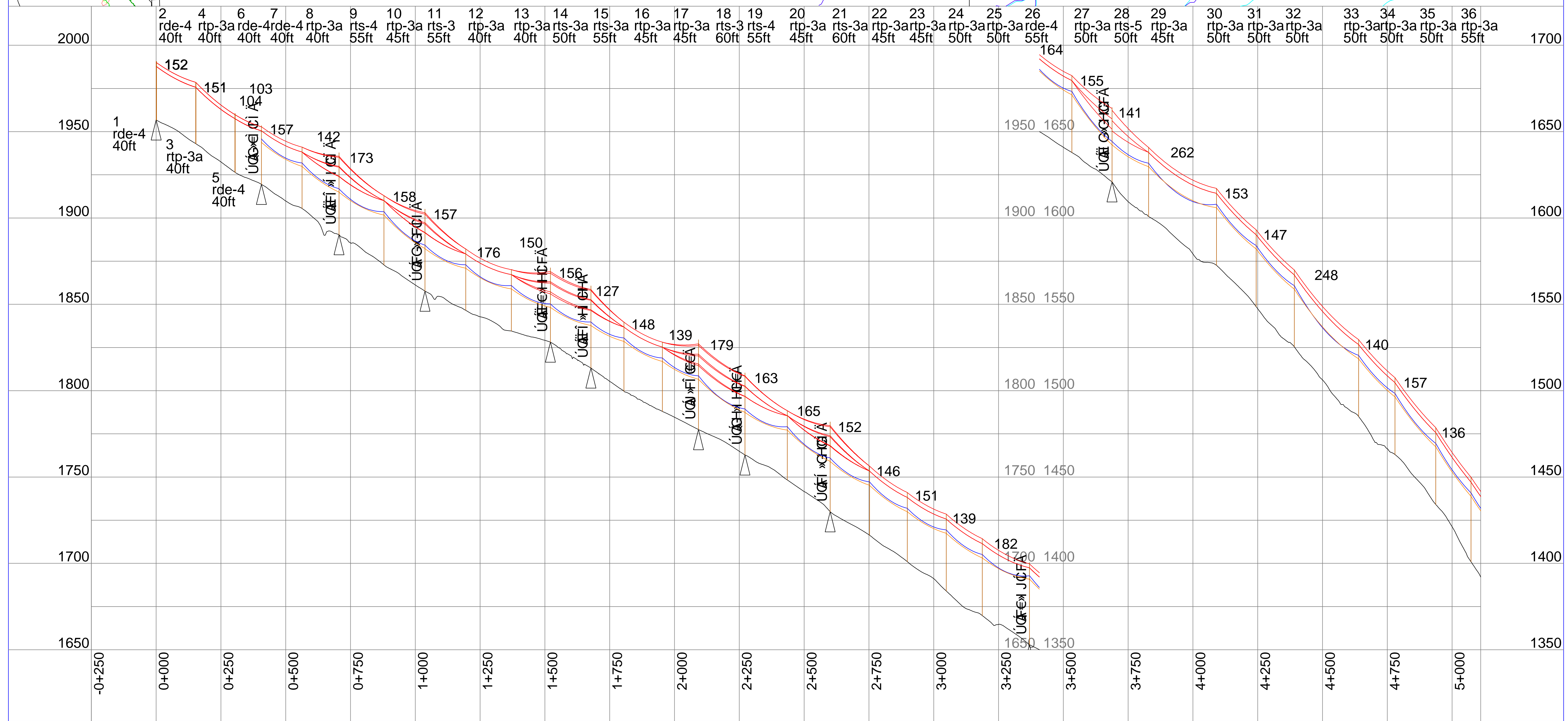
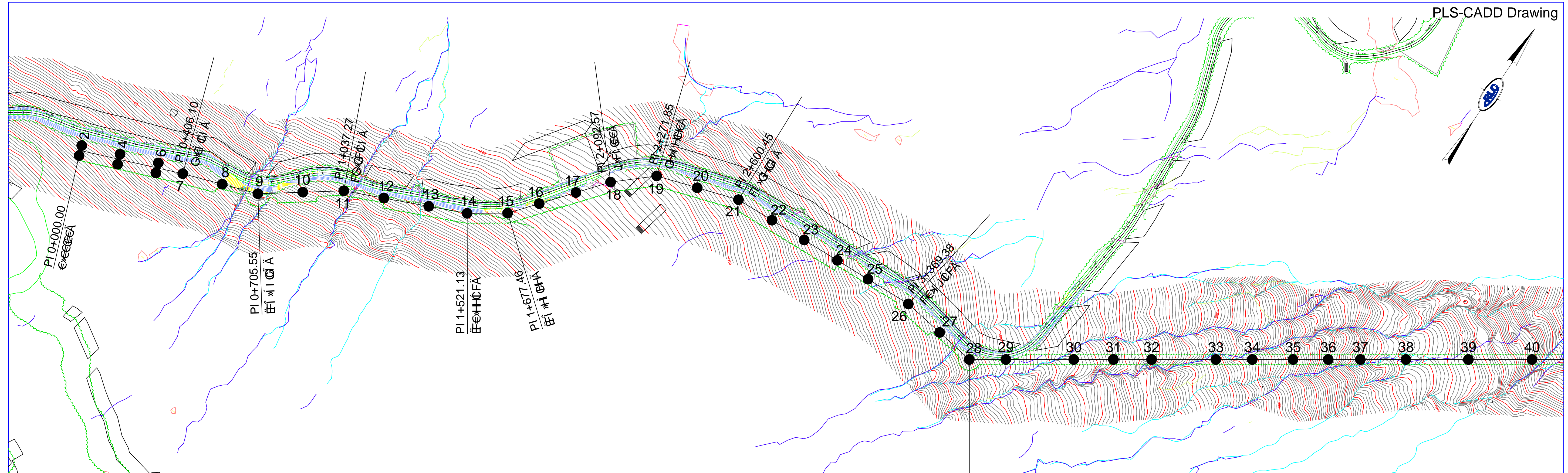
18 MEADOW ROAD
PO BOX 722
AUGUSTA, ME 04332
207.621.1077

ENGINEERING

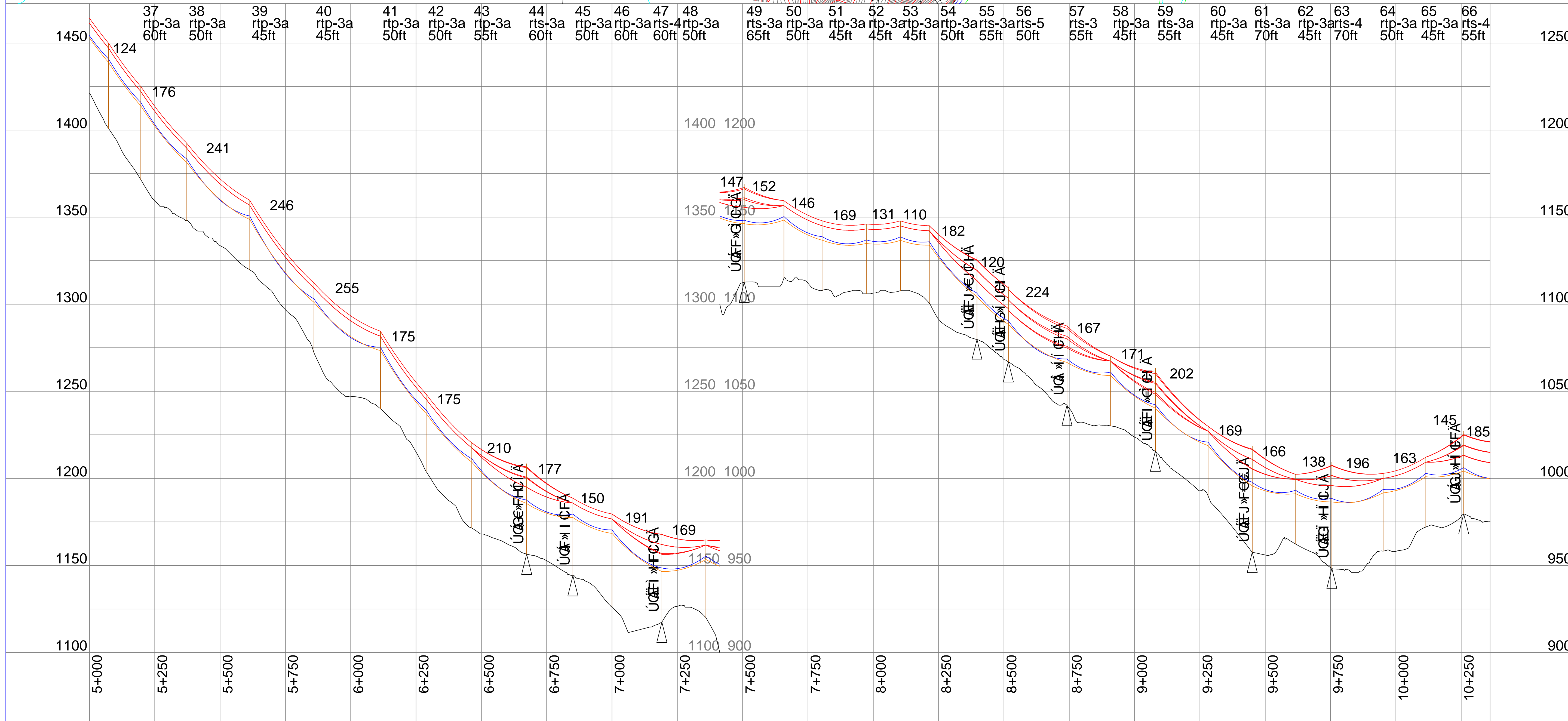
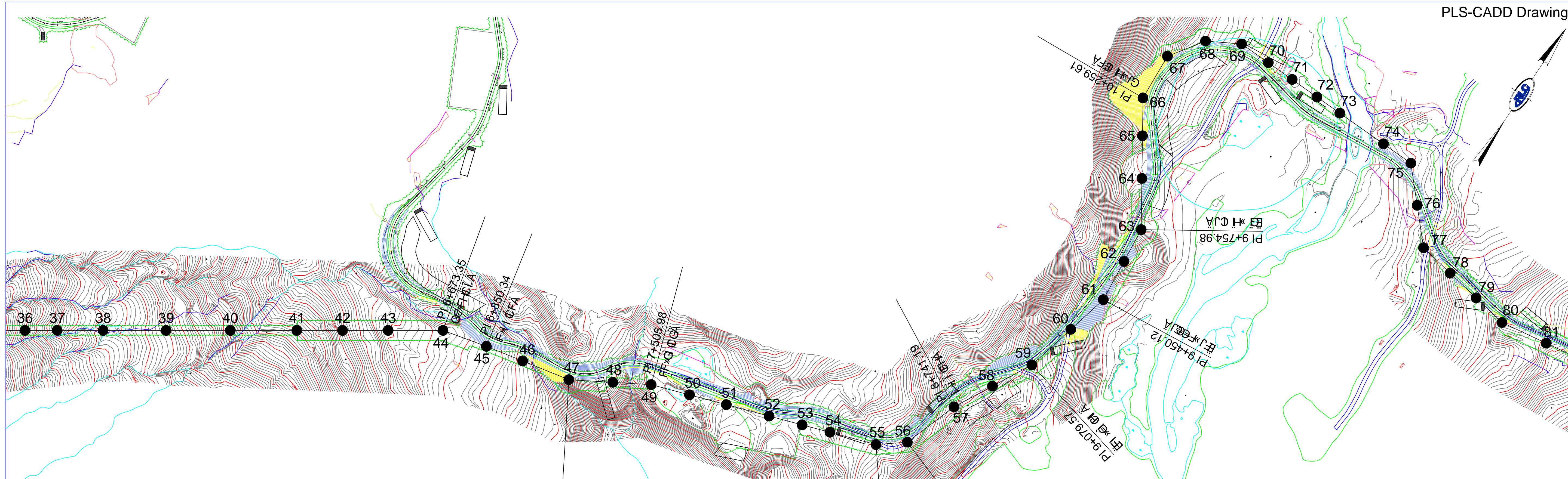
PHASE	PERMIT
SHEET #	E-301



DATE	12/17/2010	DESIGNED	ARH	DRAWN	ARH
REV	A	CHECKED	NSH	APPROVED	NSH
<p>PROJECT HIGHLAND WIND PROJECT HIGHLAND PLANTATION, MAINE DRAWING DESCRIPTION 34.5kV OVERHEAD COLLECTOR SYSTEM EAST COLLECTOR STRING</p>					
DATE	12/17/2010	SCALE	1"=200'H	REGION	A
<p>14001 18 MEADOW ROAD P.O. Box 722 AUGUSTA, ME 04332 207.621.1077</p>					
PHASE	PERMIT				
SHEET #	E-302				



DATE	12/17/2010
DESIGNED BY	ARH
CHECKED BY	NSH
APPROVED BY	NSH
PROJECT	HIGHLAND WIND PROJECT HIGHLAND PLANTATION, MAINE
DRAWING DESCRIPTION	34.5KV OVERHEAD COLLECTOR SYSTEM WEST COLLECTOR STRING
PROJECT #	14001
ENGINEER	18 MEADOW ROAD P.O. BOX 722 AUGUSTA, ME 04332 207.621.1077
PHASE	PERMIT
SHEET #	E-303

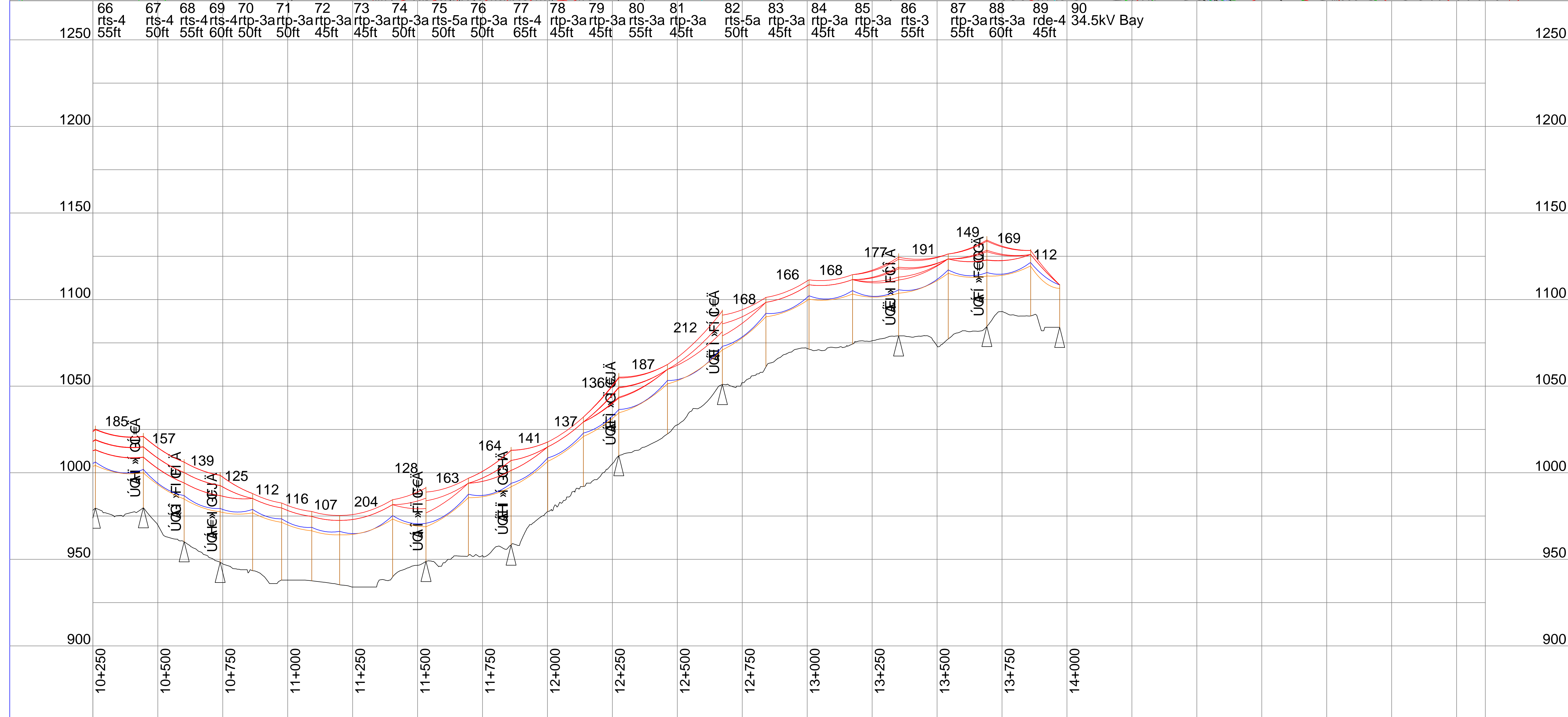
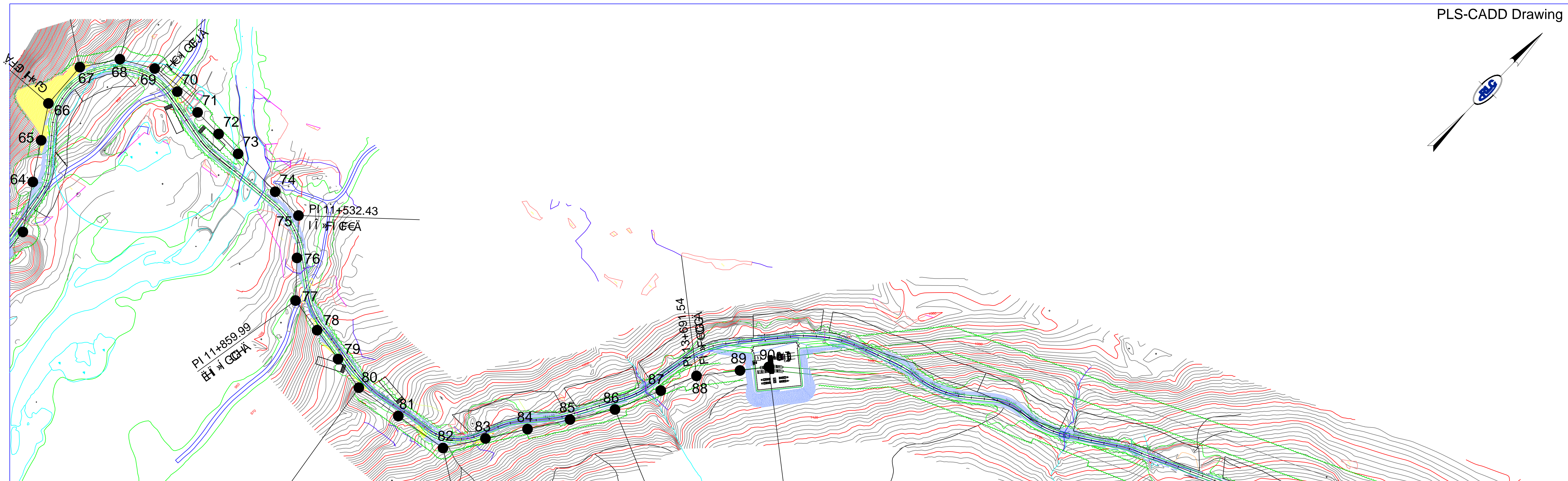
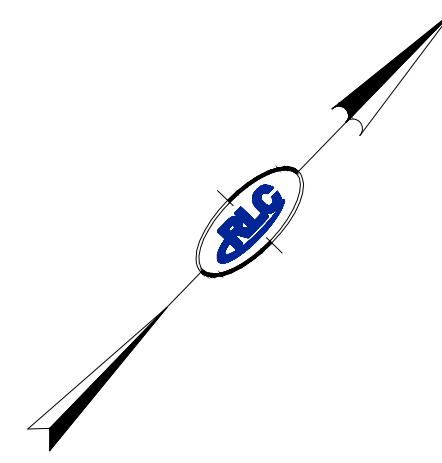


Drawn By	ARH
Checked By	NSH
Date	12/17/2010
Scale	1"=200'H 1"=30'V

PROJECT #	14001
PROJECT	HIGHLAND WIND PROJECT HIGHLAND PLANTATION, MAINE
DRAWING DESCRIPTION	34.5kV OVERHEAD COLLECTOR SYSTEM WEST COLLECTOR STRING
DATE	12/17/2010
SCALE	1"=200'H 1"=30'V
DESIGNED BY	ARH
DRAWN BY	ARH
CHECKED BY	NSH
APPROVED BY	NSH

18 MEADOW ROAD
P.O. BOX 729
AUGUSTA, ME 04332
207.621.1077

PHASE: PERMIT
SHEET #: E-304



Rev	Drawn By	Description
A	ARH	FOR PERMIT APPLICATION ONLY - NOT FOR CONSTRUCTION

DESIGNED BY	ARH
DATE	12/17/2010
SCALE	1"=200'H 1"=30'V
CHECKED	NSH
APPROVED	NSH

PROJECT	HIGHLAND WIND PROJECT HIGHLAND PLANTATION, MAINE
DRAWING DESCRIPTION	34.5kV OVERHEAD COLLECTOR SYSTEM WEST COLLECTOR STRING

PROJECT # 14001

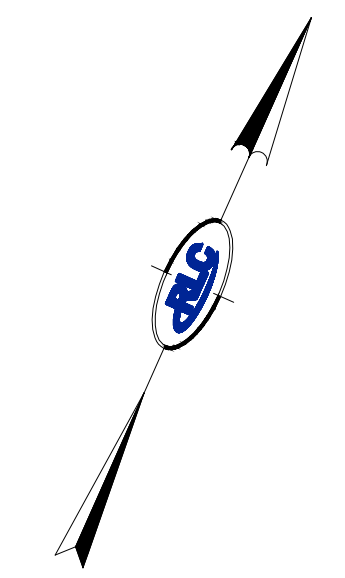
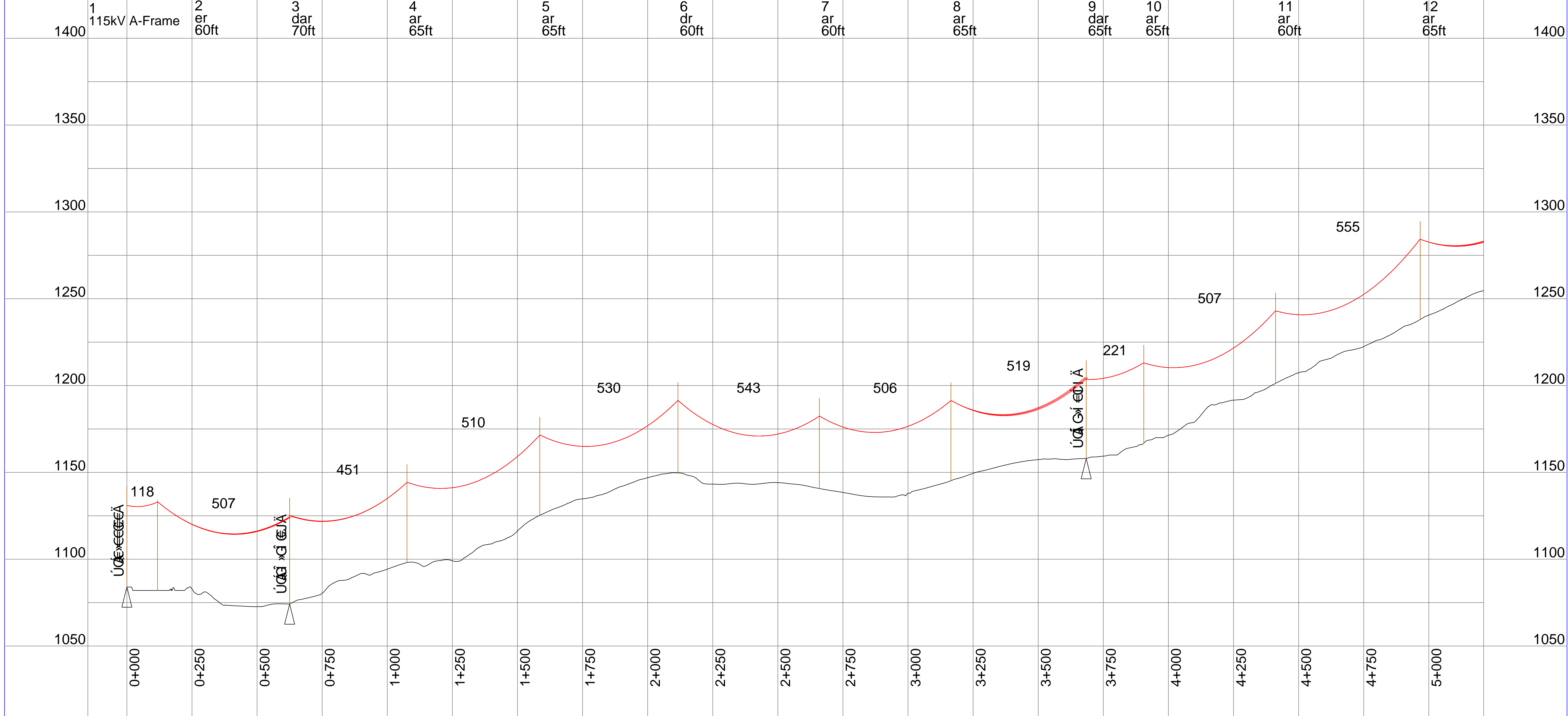
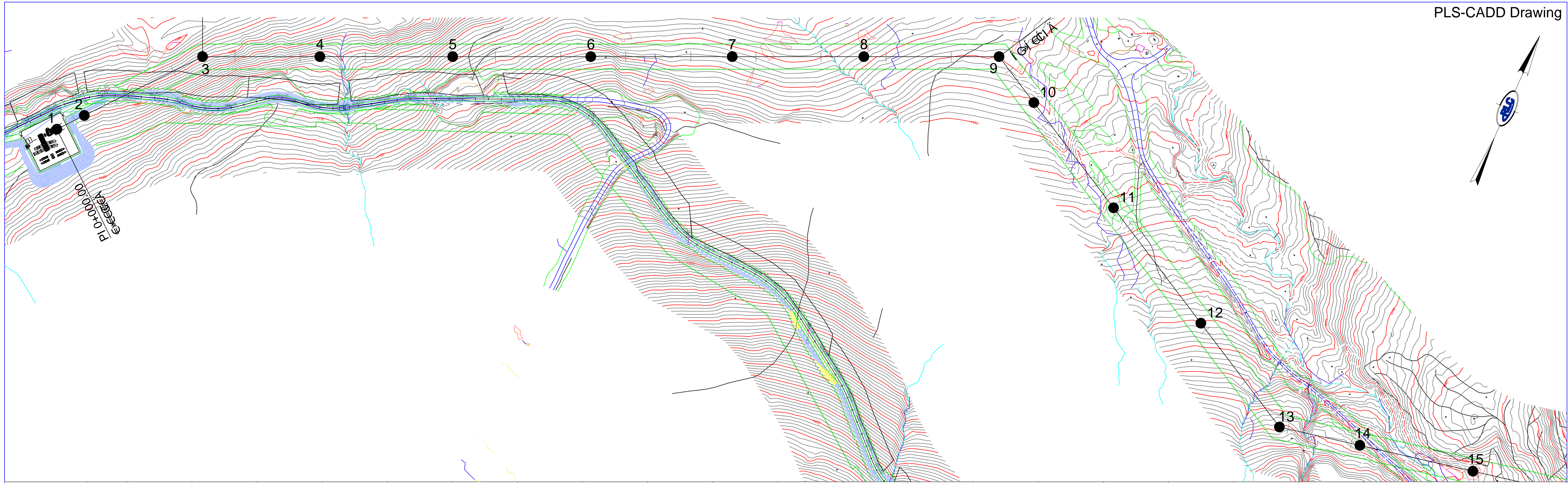
ENGINEER

RLC
ENGINEERING

18 MEADOW ROAD
P.O. Box 722
AUGUSTA, ME 04332
207.621.1077

PHASE PERMIT

SHEET # E-305

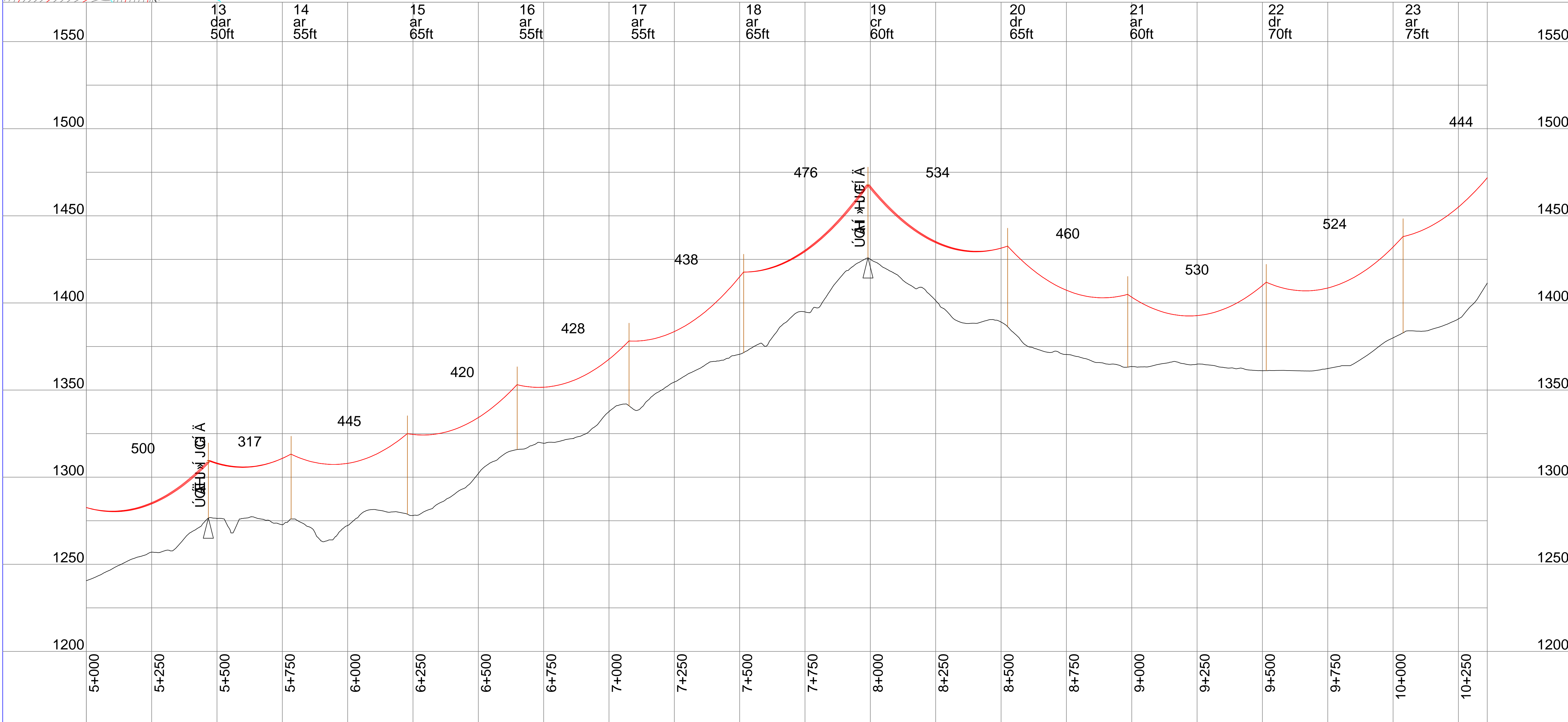
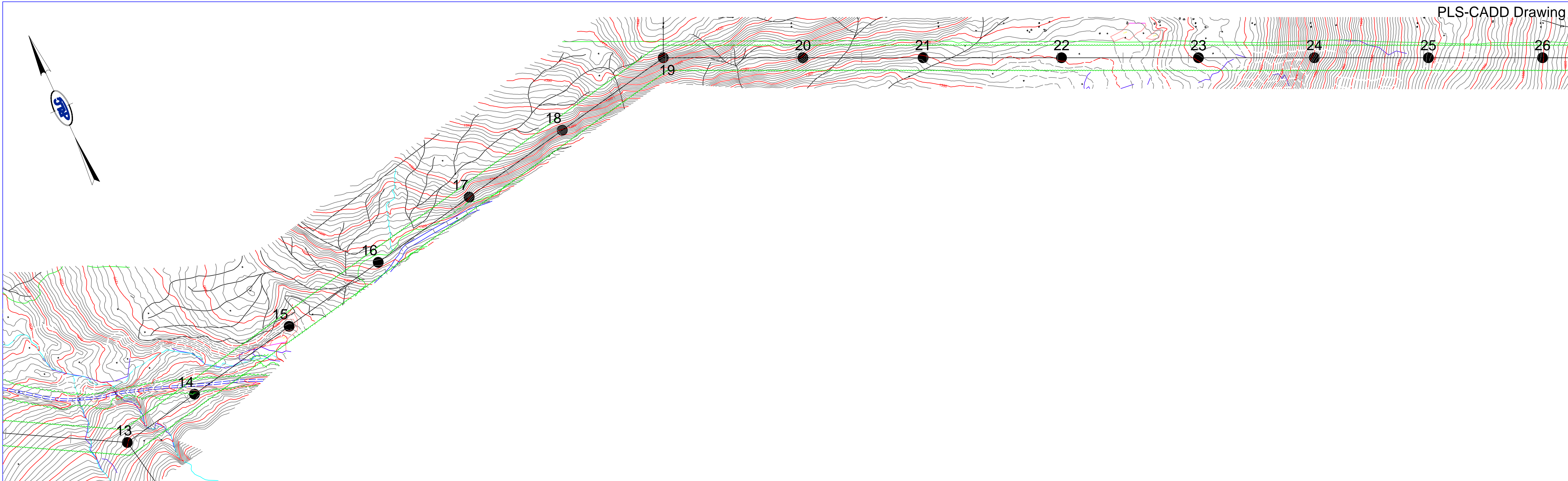


DATE	12/17/2010
DESIGNED BY	ARH
CHECKED BY	NSH
APPROVED BY	NSH
PROJECT	HIGHLAND WIND PROJECT HIGHLAND PLANTATION, MAINE 115KV OVERHEAD TRANSMISSION SYSTEM
SCALE	1"=200'H 1"=30'V
PHASE	PERMIT
SHEET #	E-401

14001

18 MEADOW ROAD
P.O. Box 722
AUGUSTA, ME 04332
207.621.1077

RLC
ENGINEERING



DATE	12/17/2010
DESIGNED BY	ARH
CHECKED BY	NSH
DATE	12/17/2010
DESIGNED BY	ARH
CHECKED BY	NSH
DATE	12/17/2010
DESIGNED BY	ARH
CHECKED BY	NSH

PROJECT #	14001
PROJECT	HIGHLAND WIND PROJECT HIGHLAND PLANTATION, MAINE 115KV OVERHEAD TRANSMISSION SYSTEM
SCALE	1"=200'H 1":30"V
DATE	12/17/2010
DESIGNED BY	ARH
CHECKED BY	NSH
DATE	12/17/2010
DESIGNED BY	ARH
CHECKED BY	NSH

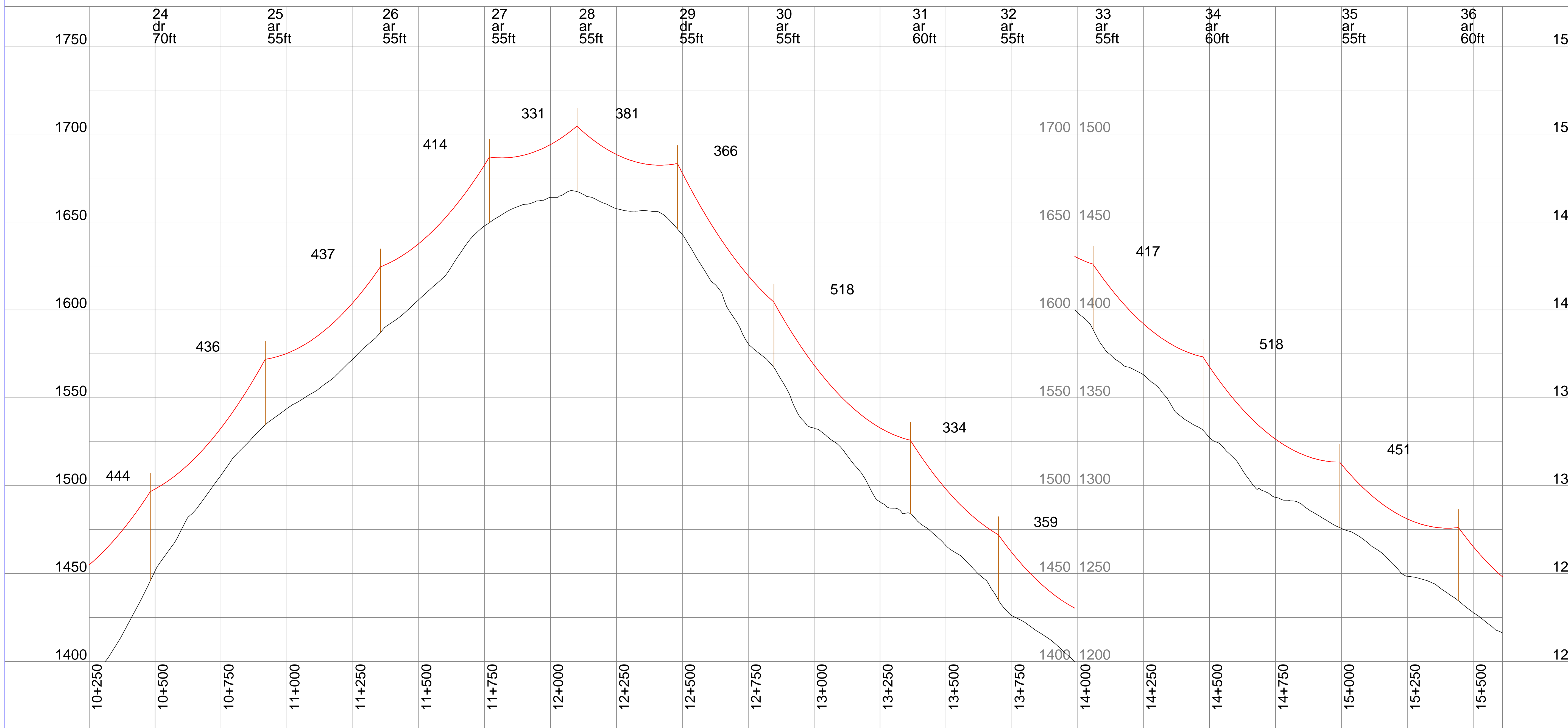
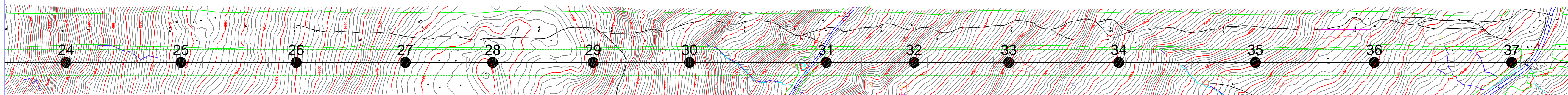
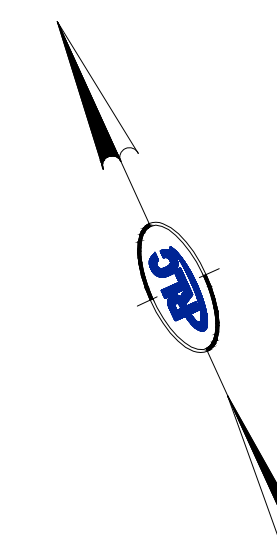
14001

18 MEADOW ROAD
P.O. Box 722
AUGUSTA, ME 04332
207.621.1077

ENGINEERING

PHASE PERMIT

SHEET # E-402



Drawn By	ARH
Checked By	NSH
Design Date	12/17/2010
Scale	1"=200'H 1"=30'V
Project	HIGHLAND WIND PROJECT
Sheet	E-403

Drawn	ARH
Checked	NSH
Design	ARH
Date	12/17/2010
Scale	1"=200'H 1"=30'V
Project	HIGHLAND WIND PROJECT
Sheet	E-403

PROJECT # 14001

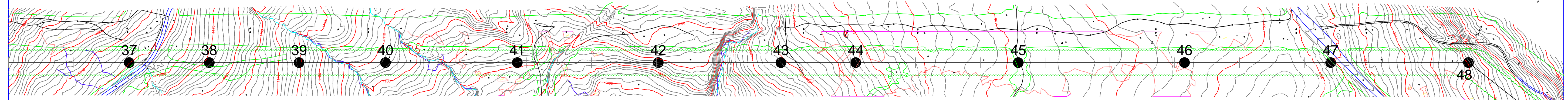
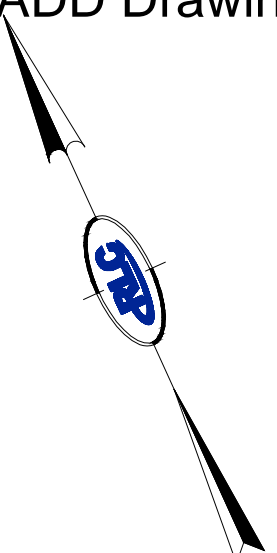
ENGINEER

RLC ENGINEERING

18 MEADOW ROAD
P.O. Box 722
AUGUSTA, ME 04332
207.621.1077

PHASE PERMIT

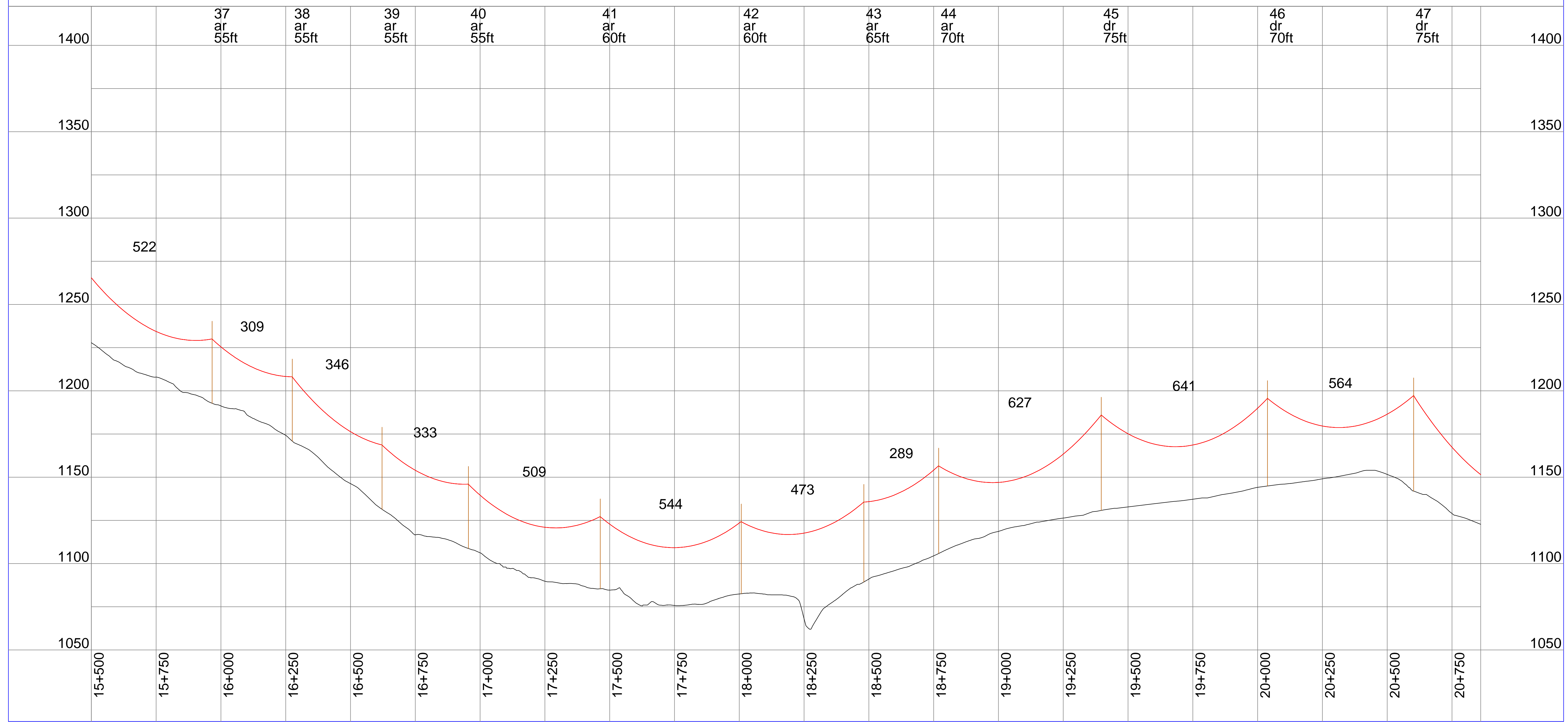
SHEET # E-403



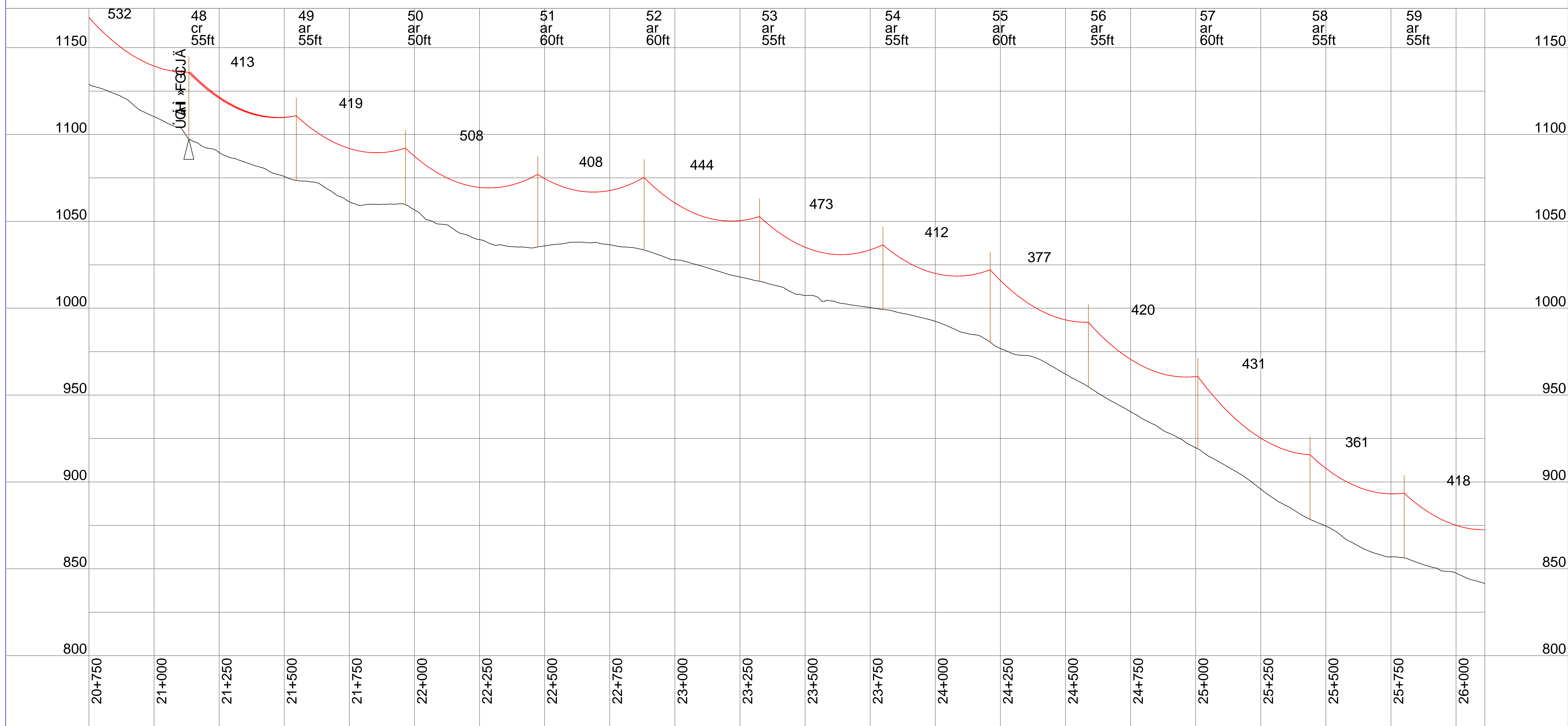
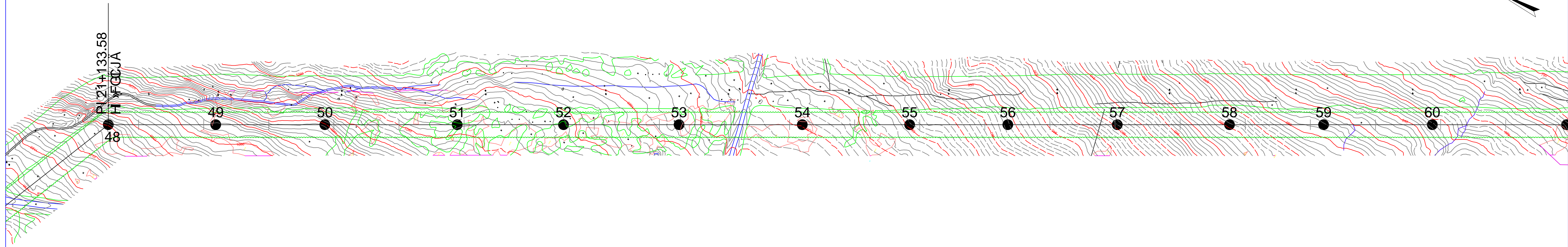
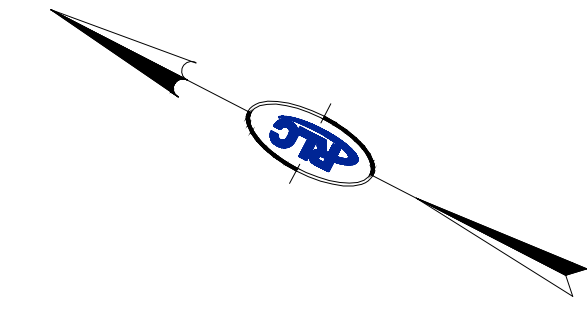
Drawn By	ARH
Checked By	NSH
Designation	FOR PERMIT APPLICATION ONLY - NOT FOR CONSTRUCTION
Date	12/17/2010

DESIGNED	ARH	ARH
DATE	12/17/2010	REVISION
SCALE	1"=200'H	1"=30'V
CHECKED	NSH	APPROVED
	NSH	NSH

PROJECT	HIGHLAND WIND PROJECT HIGHLAND PLANTATION, MAINE
DRAWING DESCRIPTION	115KV OVERHEAD TRANSMISSION SYSTEM



PROJECT #	14001
ENGINEER	
ADDRESS	18 MEADOW ROAD P.O. Box 722 AUGUSTA, ME 04332 207.621.1077
PHASE	PERMIT
SHEET #	E-404

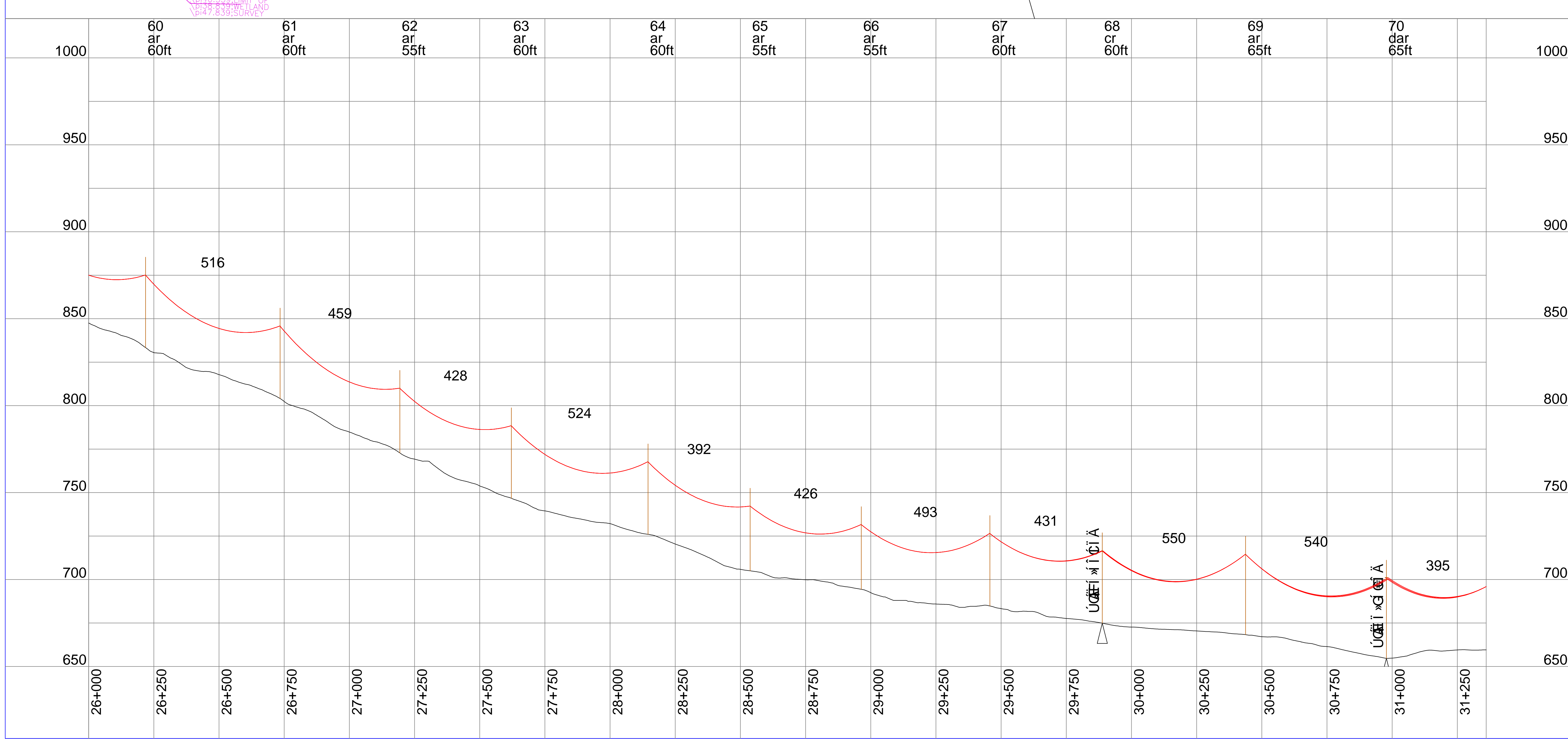
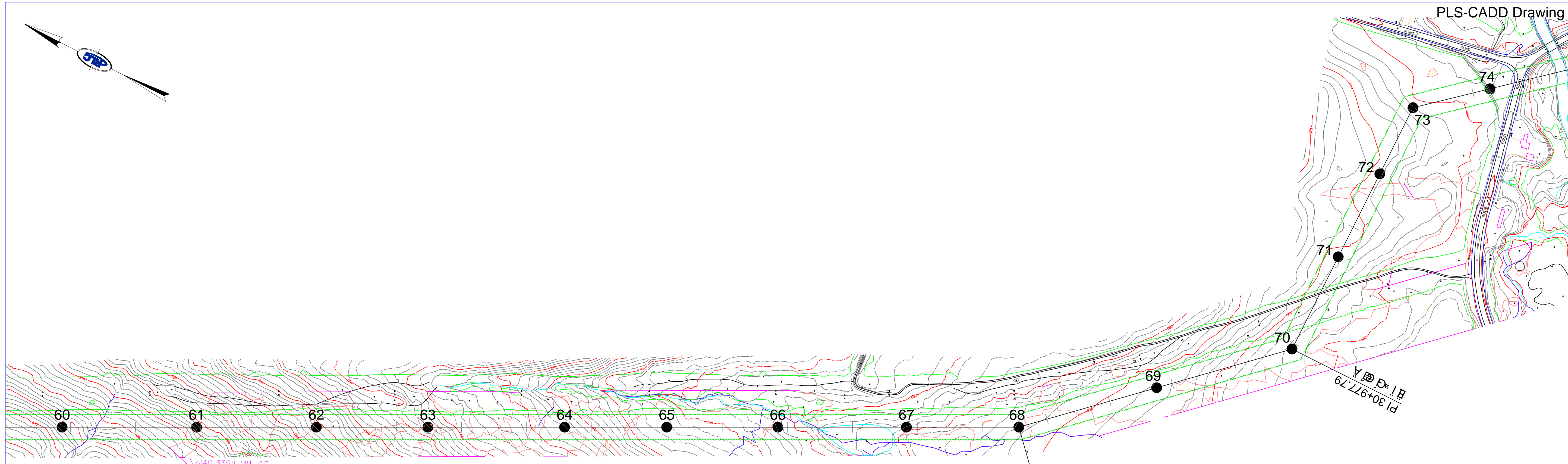


DATE	12/17/2010
DESIGNER	ARH
DRAWN	ARH
DATE	12/17/2010
REVISION	A
SCALE	1"=200'H 1":30'V
CHECKED	NSH
APPROVED	NSH

PROJECT: HIGHLAND WIND PROJECT
 HIGHLAND PLANTATION, MAINE
 115KV OVERHEAD TRANSMISSION SYSTEM

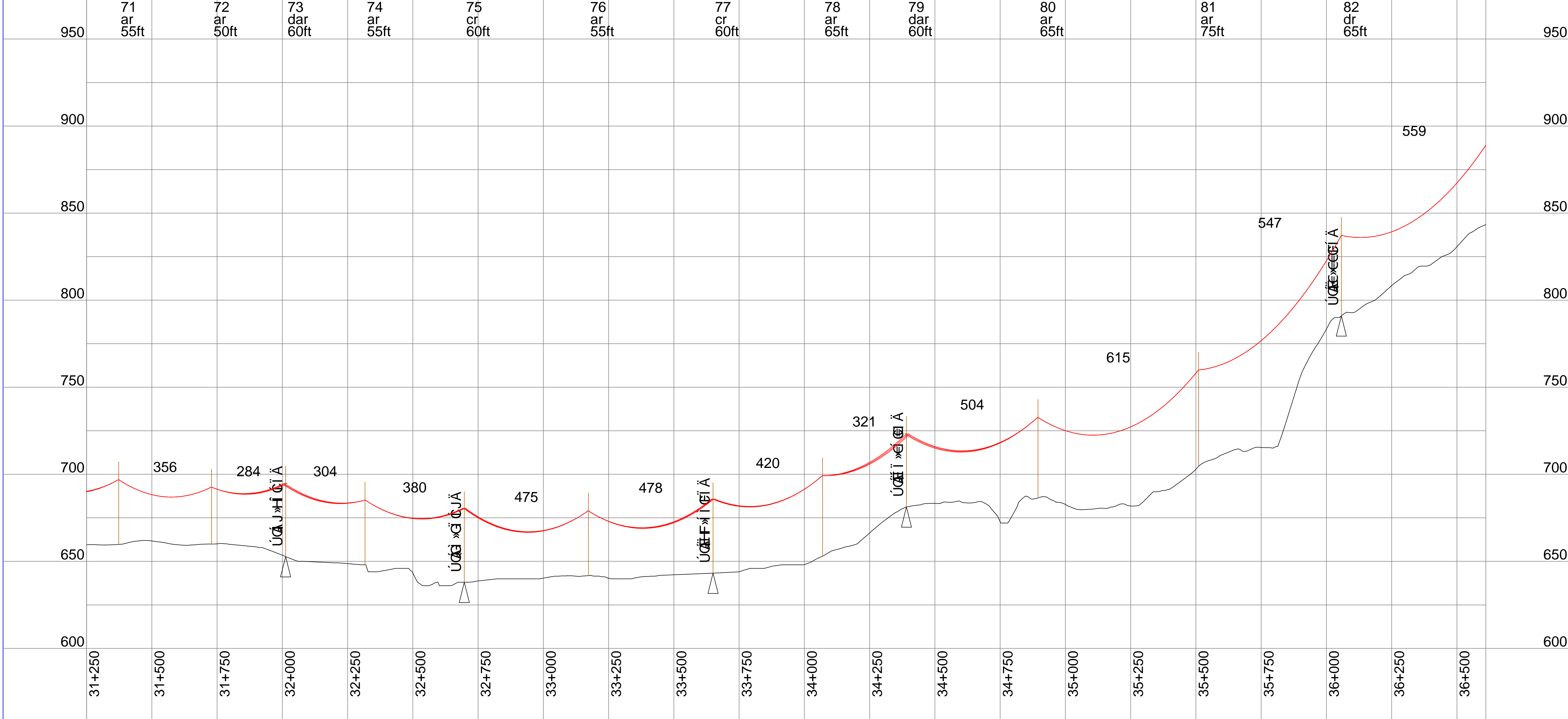
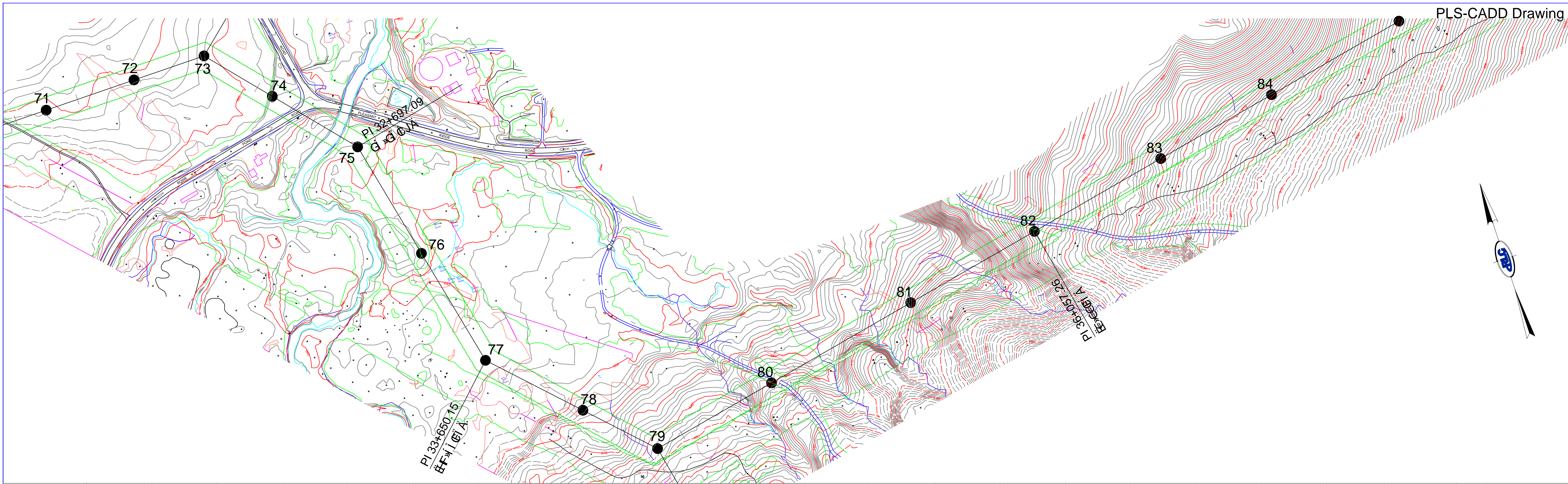
PROJECT # 14001
 ENGINEER
RLC
 ENGINEERING
 18 MEADOW ROAD
 P.O. Box 722
 AUGUSTA, ME 04332
 207.621.1077

PHASE: PERMIT
 SHEET # F-405

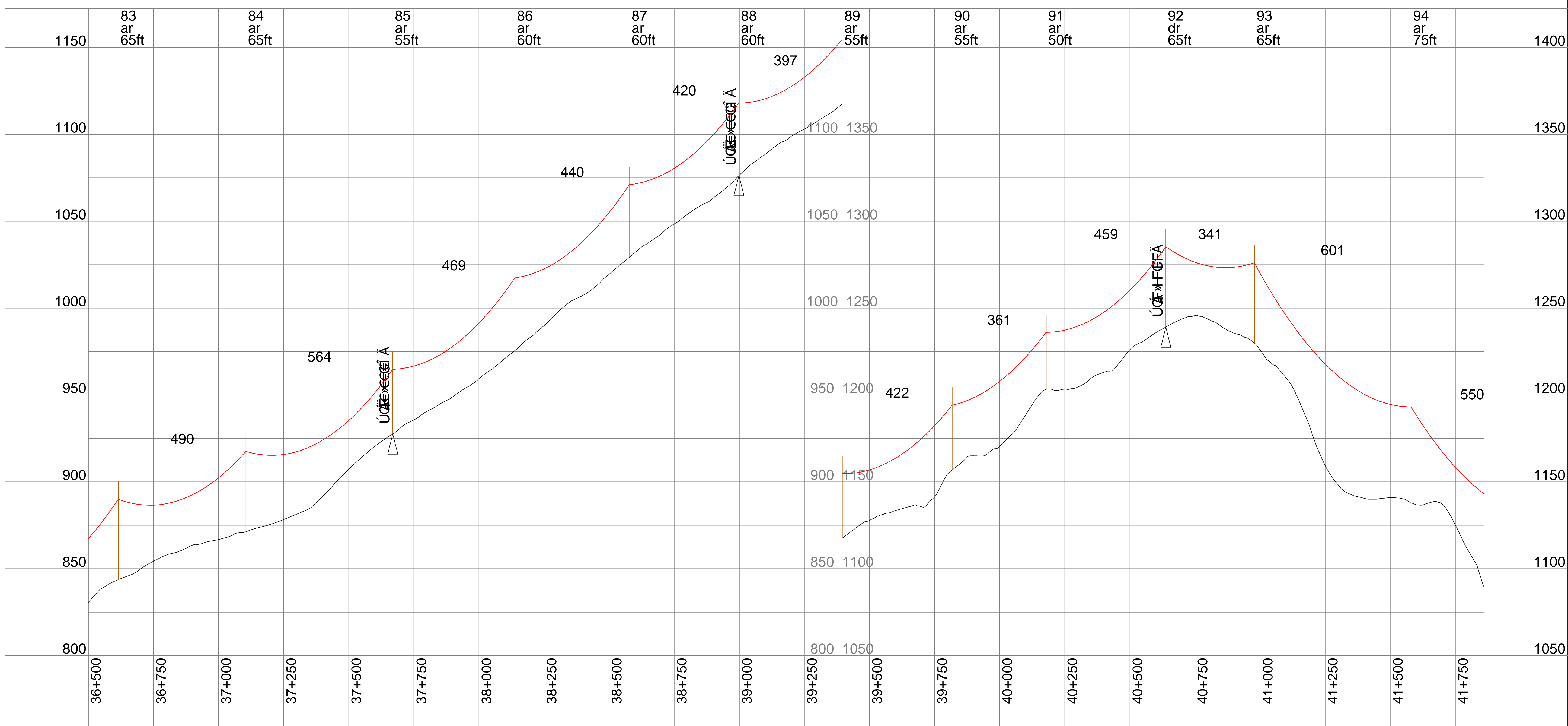
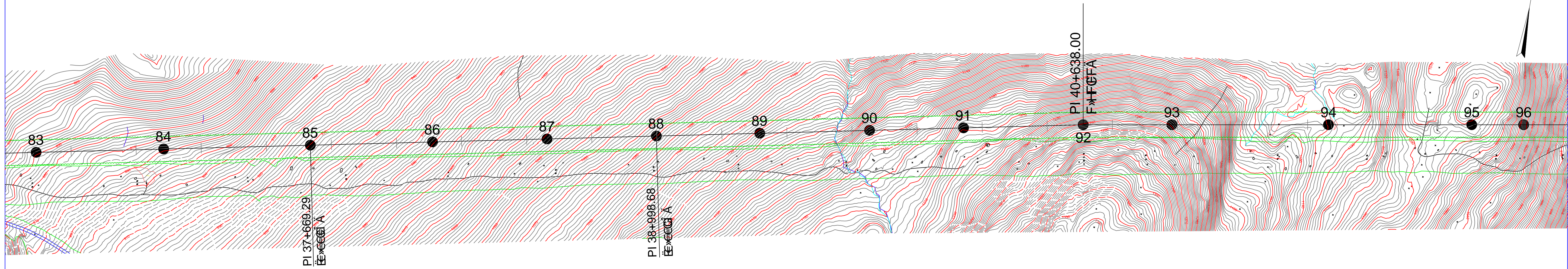
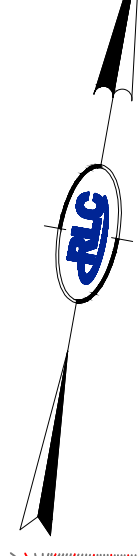


PLS-CADD Drawing

Rev:	A	Date:	12/17/2010	Drawn By:	ARH
Description:	FOR PERMIT APPLICATION ONLY - NOT FOR CONSTRUCTION				
Project:	HIGHLAND WIND PROJECT				
Phase:	PERMIT				
Sheet #:	E-406				
Scale:	1"=200'H 1"=30'V				
Checked:	NSH				
Approved:	NSH				
Project #:	14001				
Engineer:					
18 MEADOW ROAD P.O. Box 722 AUGUSTA, ME 04332 207.621.1077					



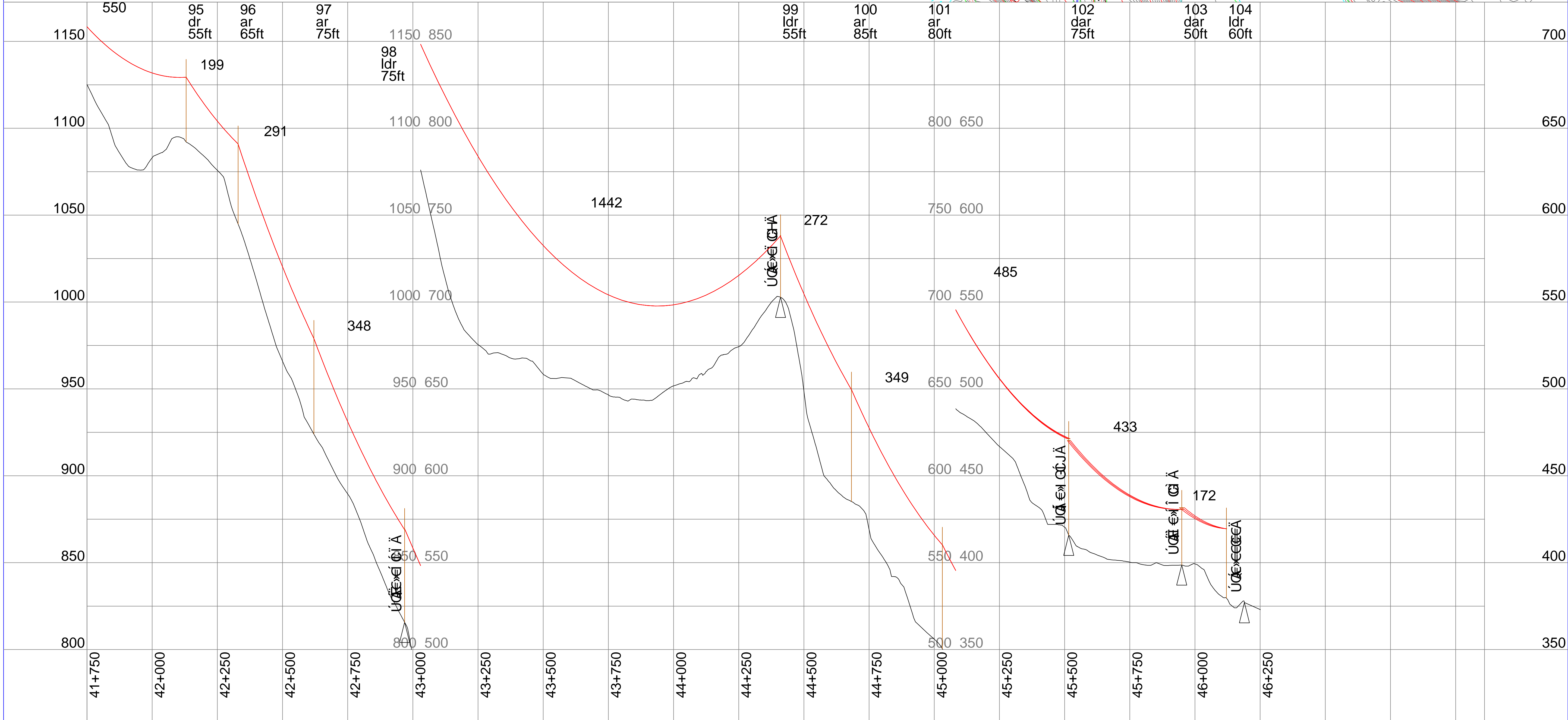
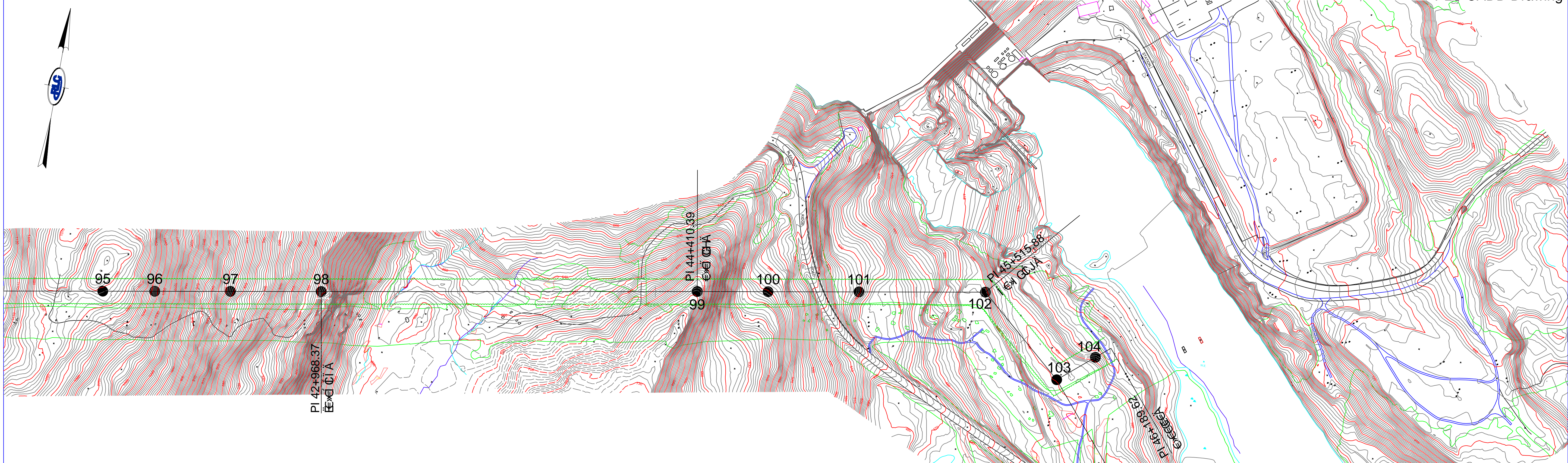
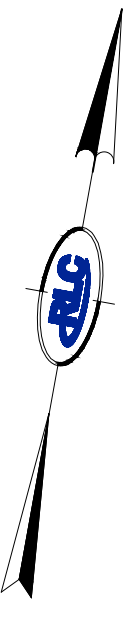
PROJECT # 14001	PROJECT HIGHLAND WIND PROJECT HIGHLAND PLANTATION, MAINE		DESIGNED ARH	DRAWN ARH
	DRAWING DESCRIPTION 115KV OVERHEAD TRANSMISSION SYSTEM		DATE 	REVISION A
ENGINEER RLC ENGINEERING 18 MEADOW ROAD P.O. Box 722 AUGUSTA, ME 04332 207.621.1077		SCALE 1"=200'H 1":30'V		APPROVED NSH
SHEET # E-407	PHASE PERMIT		CHECKED NSH	APPROVED NSH
DESCRIPTION <small>FOR PERMIT APPLICATION ONLY - NOT FOR CONSTRUCTION</small>			DATE BY 	DATE



DESIGNED BY	ARH
CHECKED BY	NSH
DATE	12/17/2010
SCALE	1"=200'H 1":30'V
REVISION	A
APPROVED BY	NSH
PROJECT	HIGHLAND WIND PROJECT
DESCRIPTION	HIGHLAND PLANTATION, MAINE
115KV OVERHEAD TRANSMISSION SYSTEM	

PROJECT #	14001
ENGINEER	RLC ENGINEERING
ADDRESS	18 MEADOW ROAD P.O. Box 722 AUGUSTA, ME 04332 207.621.1077
PHASE	PERMIT
SHEET #	F-408

PROJECT #	14001
ENGINEER	RLC ENGINEERING
ADDRESS	18 MEADOW ROAD P.O. Box 722 AUGUSTA, ME 04332 207.621.1077
PHASE	PERMIT
SHEET #	F-408



Drawn By	ARH
Checked	NSH
Approved	NSH
Project	HIGHLAND WIND PROJECT
Sheet	F-409

Revision	ARH
Date	12/17/2010
Scale	1"=200'H 1":30'V
Checked	NSH
Approved	NSH

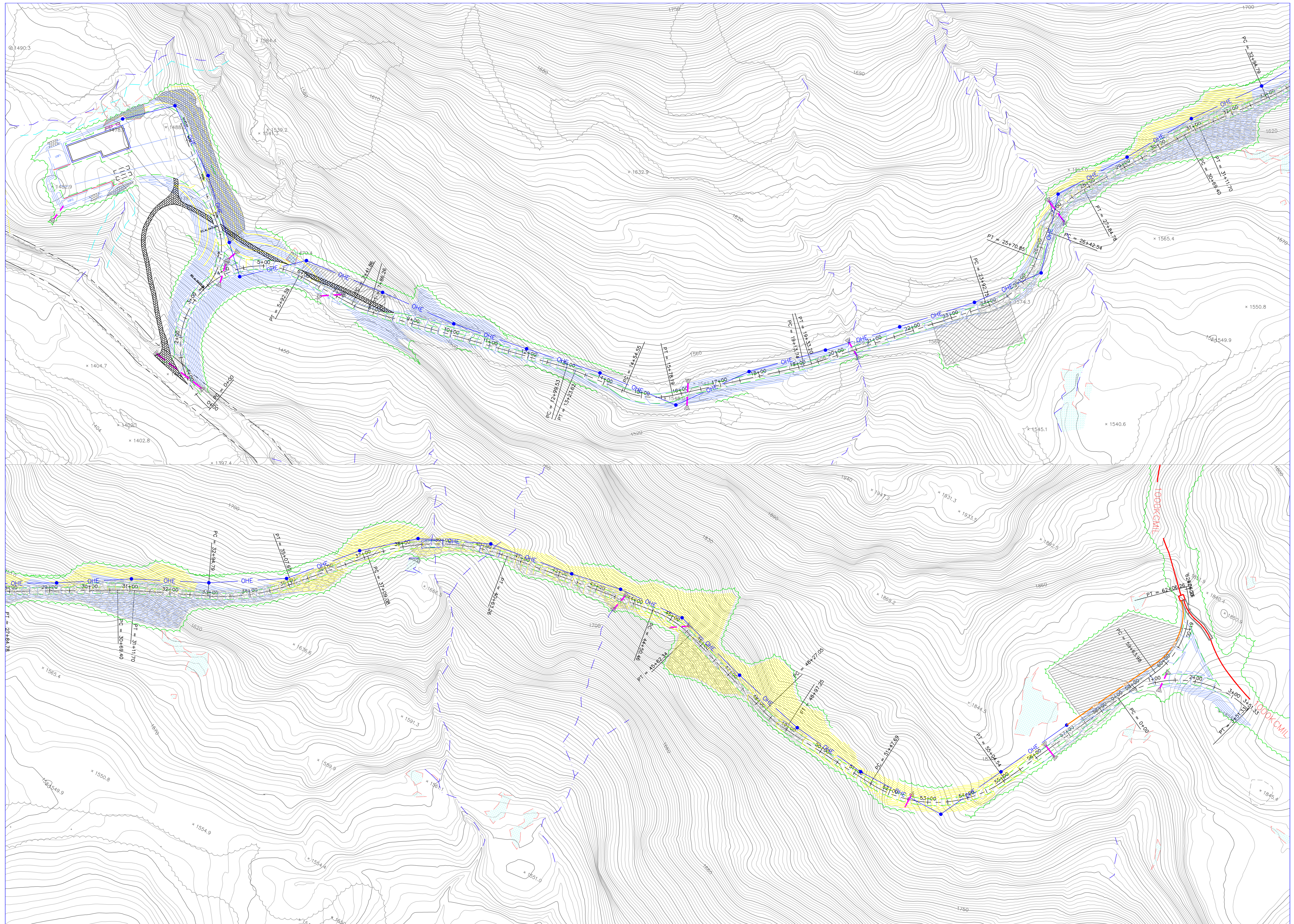
Project	HIGHLAND WIND PROJECT
Location	HIGHLAND PLANTATION, MAINE
System	115KV OVERHEAD TRANSMISSION SYSTEM

14001

18 MEADOW ROAD
P.O. Box 722
AUGUSTA, ME 04332
207.621.1077



Phase	PERMIT
Sheet #	F-409



PROJECT #	14001	ENGINEER	18 MEADOW ROAD P.O. BOX 722 AUGUSTA, ME 04332 207.621.1077
PHASE	PERMIT	REVISION	ARH
SHEET #	E-501	DATE	11/22/2010
SCALE	1" = 100'	CHECKED	NSH
APPROVED	NSH	DRAWN DESCRIPTION	O&M BUILDING OVERHEAD ELECTRIC SUPPLY PLAN
PROJECT	HIGHLAND WIND PROJECT HIGHLAND PLANTATION, MAINE		
REVISION	ARH	DATE	11/22/2010
SCALE	1" = 100'	CHECKED	NSH
APPROVED	NSH	DRAWN DESCRIPTION	O&M BUILDING OVERHEAD ELECTRIC SUPPLY PLAN
PROJECT	HIGHLAND WIND PROJECT HIGHLAND PLANTATION, MAINE		
REVISION	ARH	DATE	11/22/2010
SCALE	1" = 100'	CHECKED	NSH
APPROVED	NSH	DRAWN DESCRIPTION	O&M BUILDING OVERHEAD ELECTRIC SUPPLY PLAN
PROJECT	HIGHLAND WIND PROJECT HIGHLAND PLANTATION, MAINE		
REVISION	ARH	DATE	11/22/2010
SCALE	1" = 100'	CHECKED	NSH
APPROVED	NSH	DRAWN DESCRIPTION	O&M BUILDING OVERHEAD ELECTRIC SUPPLY PLAN