

**REDINGTON WIND FARM PROJECT
 REDINGTON MOUNTAIN WINDPOWER, LLC**



DeLuca-Hoffman Associates, Inc.
 778 MAIN STREET, SUITE 8
 SOUTH PORTLAND, ME 04106
 207.775.1121
 WWW.DELUCAHOFFMAN.COM

**LOWER BLACK NUBBLE
 DRAINAGE AREAS**

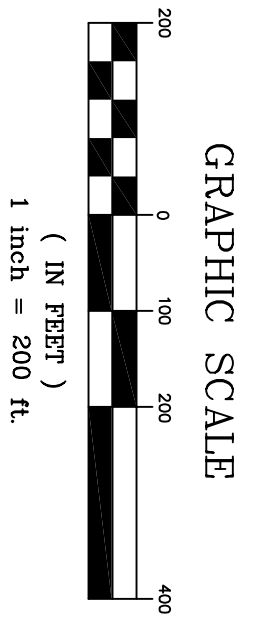
DRAWN:	KEW	DATE:	JULY 2005
DESIGNED:	DDA	SCALE:	1"=200'
CHECKED:	WGH	JOB NO.:	1708.06
FILE NAME:	1708.06-DRAINAGE		

NO.	DATE	REVISIONS
2	12.15.05	REVISED PROJECT TITLE
1	08.12.05	ISSUED TO CLIENT FOR REVIEW

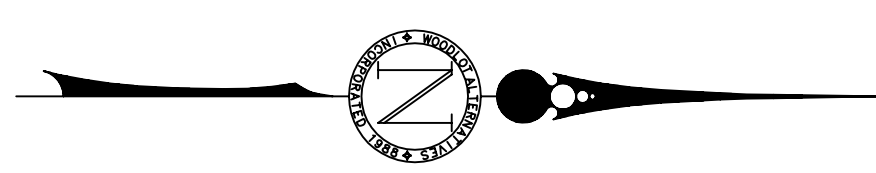
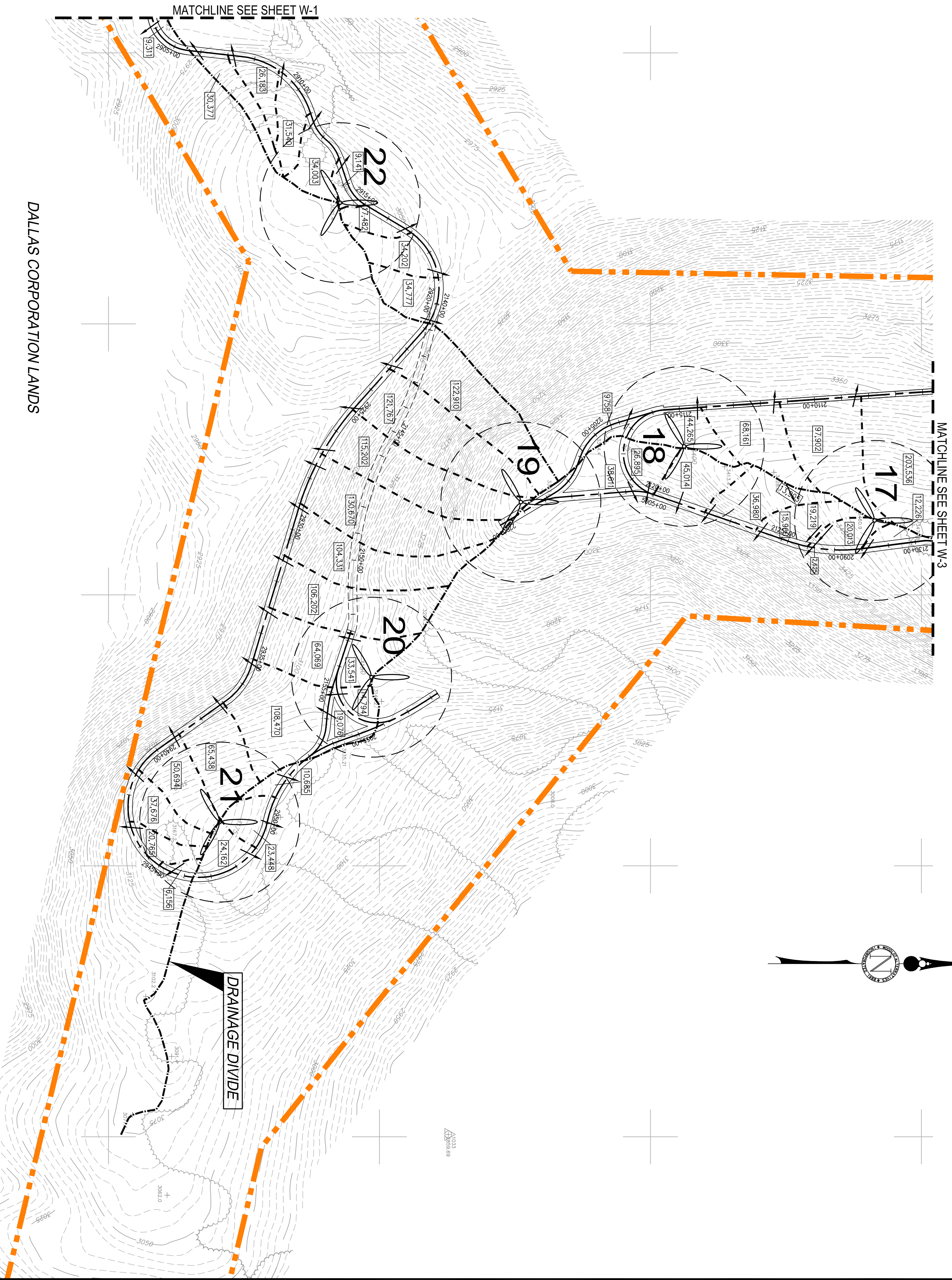
SHEET

W-1

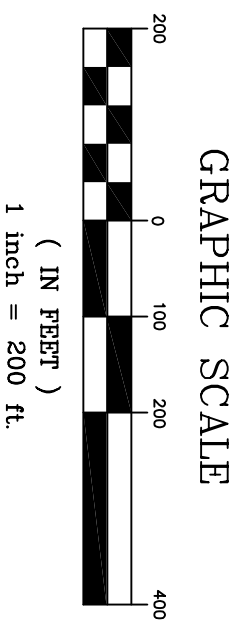
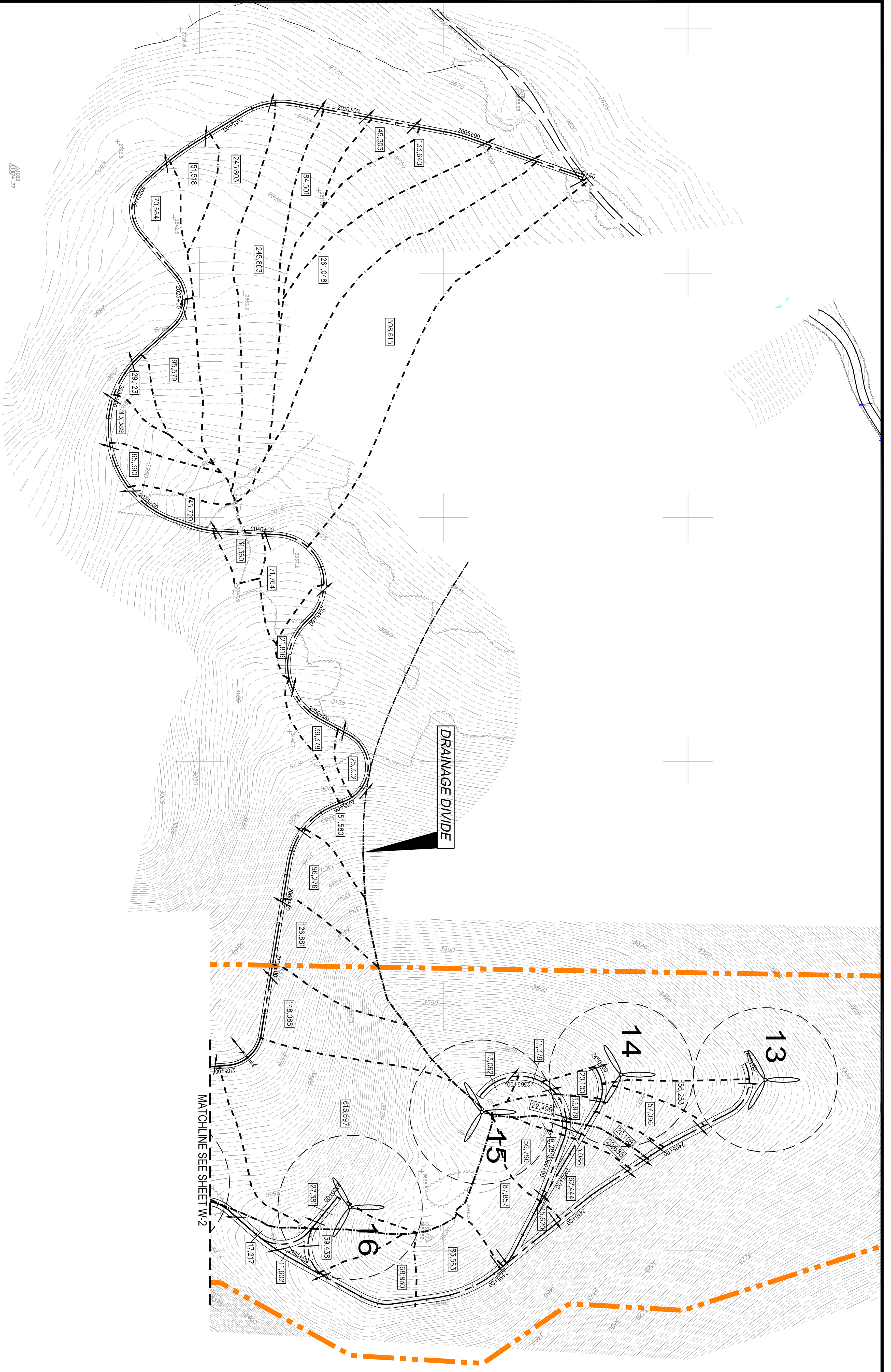
LEGEND	
	DRAINAGE DIVIDE
	WATERSHED BOUNDARY
	APPROX. DISCHARGE POINT (CULVERT OR TURNOUT)
	SUBCATCHMENT AREA IN SQUARE FEET



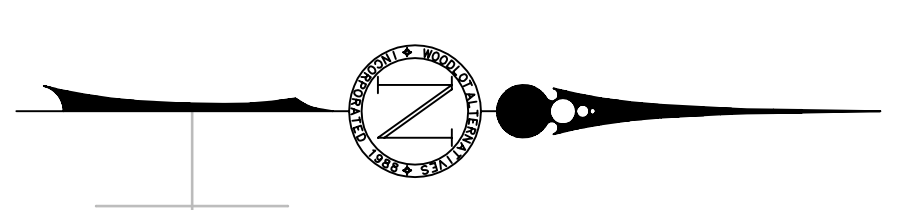
DALLAS CORPORATION LANDS



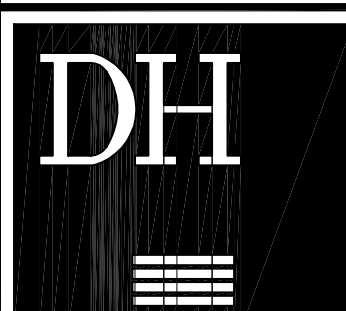
<p>SHEET</p> <p style="font-size: 2em; font-weight: bold;">W-2</p>	<p>REDINGTON WIND FARM PROJECT REDINGTON MOUNTAIN WINDPOWER, LLC</p>		<p>LOWER BLACK NUBBLE DRAINAGE AREAS</p>				
	<p>DeLuca-Hoffman Associates, Inc. 778 MAIN STREET, SUITE 8 SOUTH PORTLAND, ME 04106 207.775.1121 WWW.DELUCAHOFFMAN.COM</p>		DRAWN:	KEW	DATE:	JULY 2005	
			DESIGNED:	DDA	SCALE:	1"=200'	2
	CHECKED:	WGH	JOB NO.	1708.06	1	08.12.05	ISSUED TO CLIENT FOR REVIEW
	FILE NAME:	1708.06-DRAINAGE		NO.	DATE	REVISIONS	



LEGEND	
	DRAINAGE DIVIDE
	WATERSHED BOUNDARY
	APPROX. DISCHARGE POINT (CULVERT OR TURNOUT)
	SUBCATCHMENT AREA IN SQUARE FEET



REDINGTON WIND FARM PROJECT
REDINGTON MOUNTAIN WINDPOWER, LLC



DeLuca-Hoffman Associates, Inc.
 778 MAIN STREET, SUITE 8
 SOUTH PORTLAND, ME 04106
 207.775.1121
 WWW.DELUCAHOFFMAN.COM

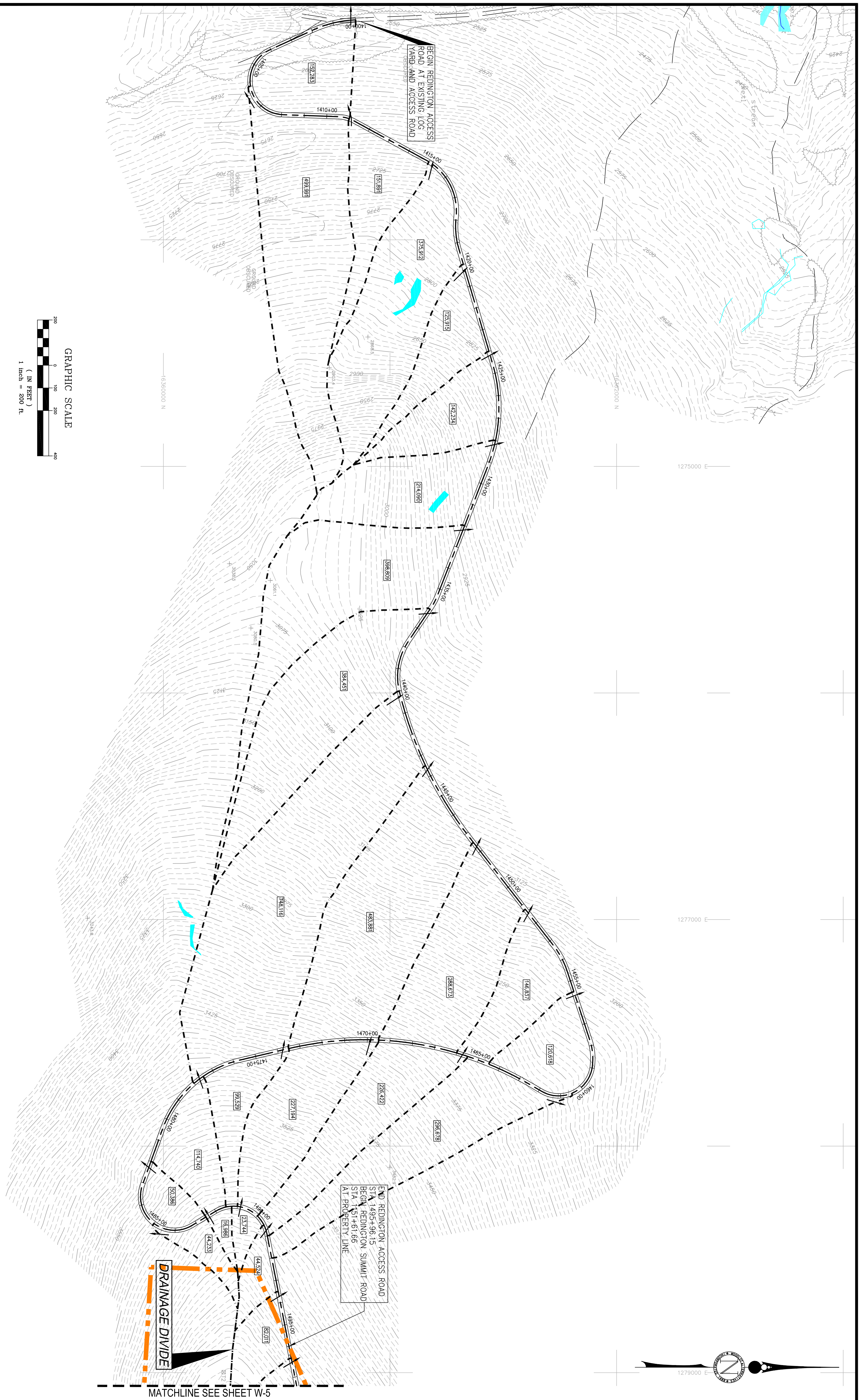
UPPER BLACK NUBBLE
DRAINAGE AREAS

DRAWN:	KEW	DATE:	JULY 2005
DESIGNED:	DDA	SCALE:	1"=200'
CHECKED:	WGH	JOB NO.:	1708.06
FILE NAME:	1708.06-DRAINAGE		

NO.	DATE	REVISIONS
2	12.15.05	REVISED PROJECT TITLE
1	08.12.05	ISSUED TO CLIENT FOR REVIEW

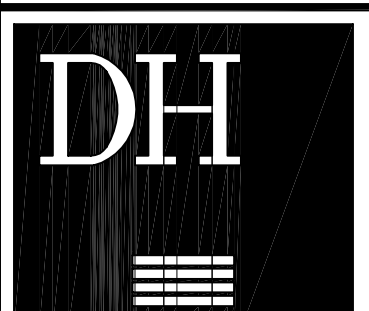
W-3

SHEET



LEGEND	
	DRAINAGE DIVIDE
	WATERSHED BOUNDARY
	APPROX. DISCHARGE POINT (CULVERT OR TURNOUT)
	SUBCATCHMENT AREA IN SQUARE FEET

REDINGTON WIND FARM PROJECT
REDINGTON MOUNTAIN WINDPOWER, LLC



DeLuca-Hoffman Associates, Inc.
 778 MAIN STREET, SUITE 8
 SOUTH PORTLAND, ME 04106
 207.775.1121
 WWW.DELUCAHOFFMAN.COM

REDINGTON ACCESS ROAD
DRAINAGE AREAS


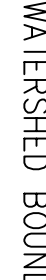


DRAWN:	KEW	DATE:	JULY 2005
DESIGNED:	DDA	SCALE:	1"=200'
CHECKED:	WGH	JOB NO.	1708.06
FILE NAME:	1708.06-DRAINAGE		

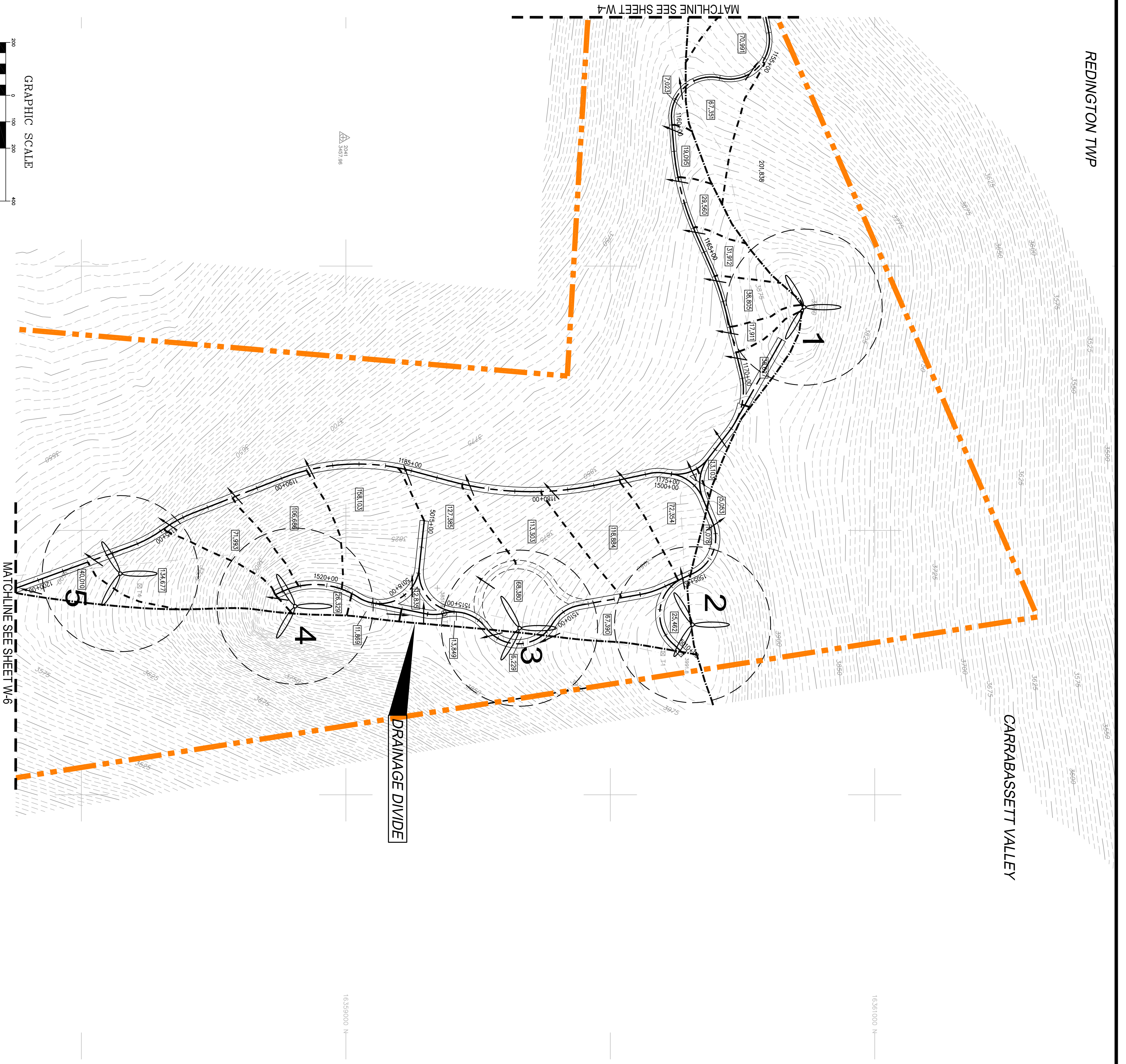
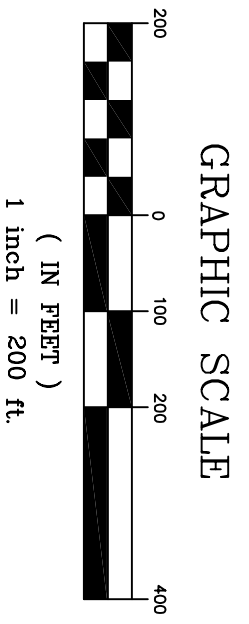
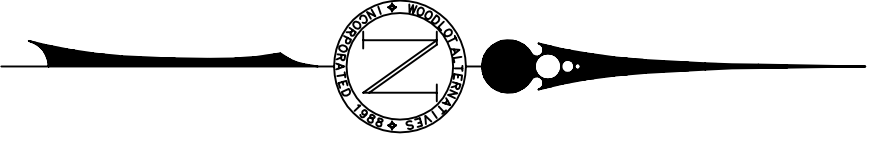
NO.	DATE	REVISIONS
2	12.15.05	REVISED PROJECT TITLE
1	08.12.05	ISSUED TO CLIENT FOR REVIEW

W-4

SHEET

MATCHLINE SEE SHEET W-5

LEGEND	
	DRAINAGE DIVIDE
	WATERSHED BOUNDARY
	APPROX. DISCHARGE POINT (CULVERT OR TURNOUT)
	SUBCATCHMENT AREA IN SQUARE FEET



REDINGTON TWP

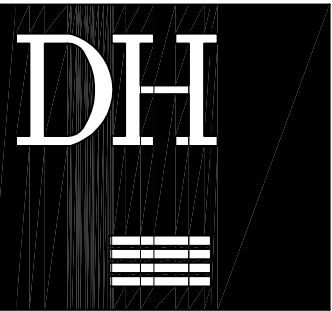
CARRASSETT VALLEY

DRAINAGE DIVIDE

MATCHLINE SEE SHEET W-4

MATCHLINE SEE SHEET W-6

REDINGTON WIND FARM PROJECT
REDINGTON MOUNTAIN WINDPOWER, LLC



DeLuca-Hoffman Associates, Inc.
 778 MAIN STREET, SUITE 8
 SOUTH PORTLAND, ME 04106
 207.775.1121
 WWW.DELUCAHOFFMAN.COM

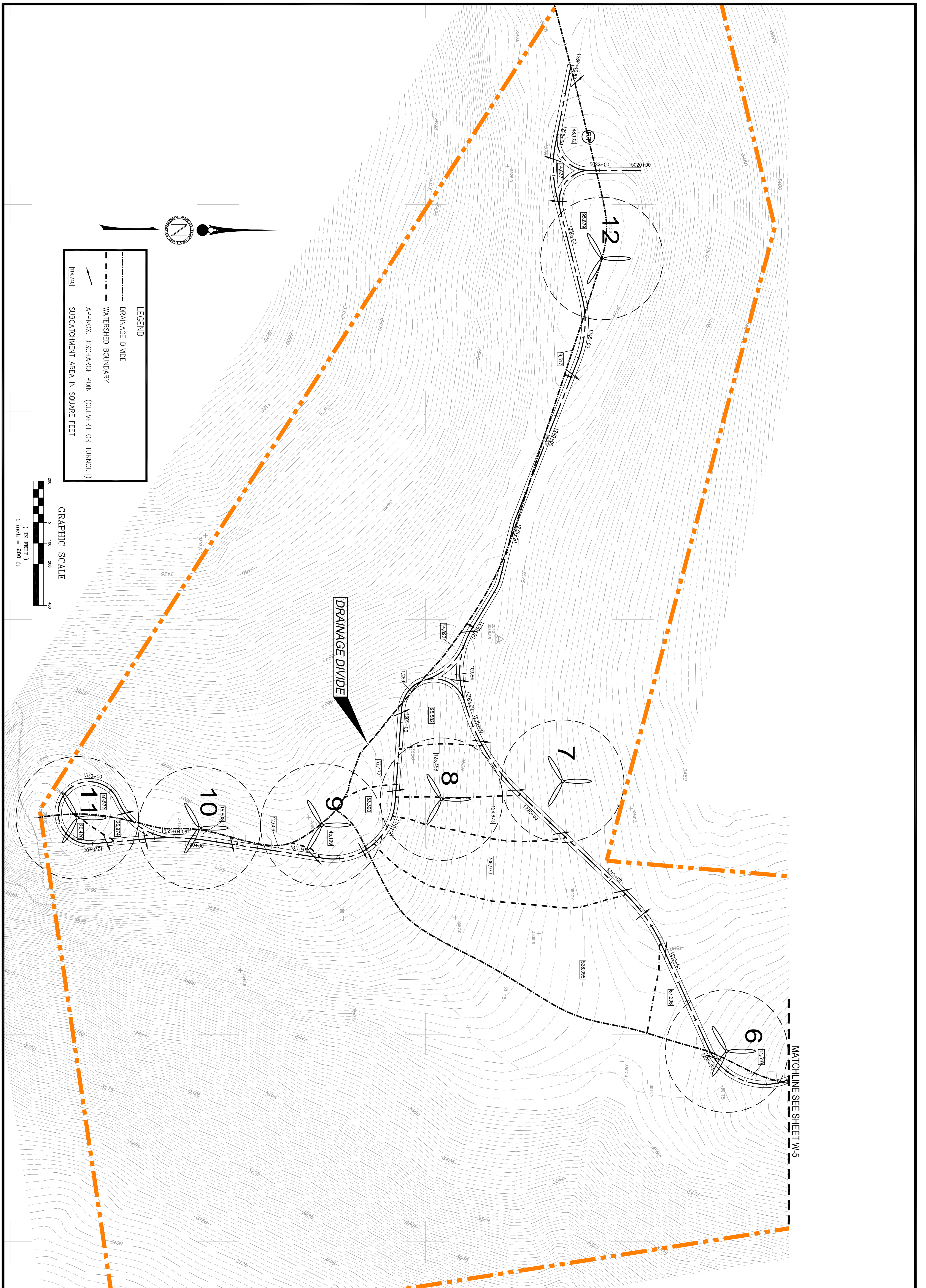
REDINGTON SUMMIT ROAD
DRAINAGE AREAS

DRAWN:	KEW	DATE:	JULY 2005
DESIGNED:	DDA	SCALE:	1"=200'
CHECKED:	WGH	JOB NO.:	1708.06
FILE NAME:	1708.06-DRAINAGE		

NO.	DATE	REVISIONS
2	12.15.05	REVISED PROJECT TITLE
1	08.12.05	ISSUED TO CLIENT FOR REVIEW

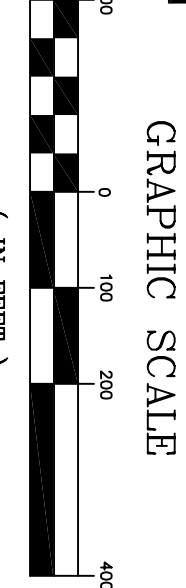
W-5

SHEET



LEGEND

- DRAINAGE DIVIDE
- WATERSHED BOUNDARY
- APPROX. DISCHARGE POINT (CULVERT OR TURNOUT)
- SUBCATCHMENT AREA IN SQUARE FEET



MATCHLINE SEE SHEET W-5

W-6	SHEET	REDINGTON WIND FARM PROJECT		REDINGTON SUMMIT ROAD				
		REDINGTON MOUNTAIN WINDPOWER, LLC		DRAINAGE AREAS				
		DeLuca-Hoffman Associates, Inc. 778 MAIN STREET, SUITE 8 SOUTH PORTLAND, ME 04106 207.775.1121 WWW.DELUCAHOFFMAN.COM		DRAWN: KEW	DATE: JULY 2005			
				DESIGNED: DDA	SCALE: 1"=200'	2	12.15.05	REVISED PROJECT TITLE
				CHECKED: WGH	JOB NO. 1708.06	1	08.12.05	ISSUED TO CLIENT FOR REVIEW
FILE NAME: 1708.06-DRAINAGE		NO.	DATE	REVISIONS				