






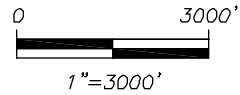


FISHERIES RESOURCE MAP

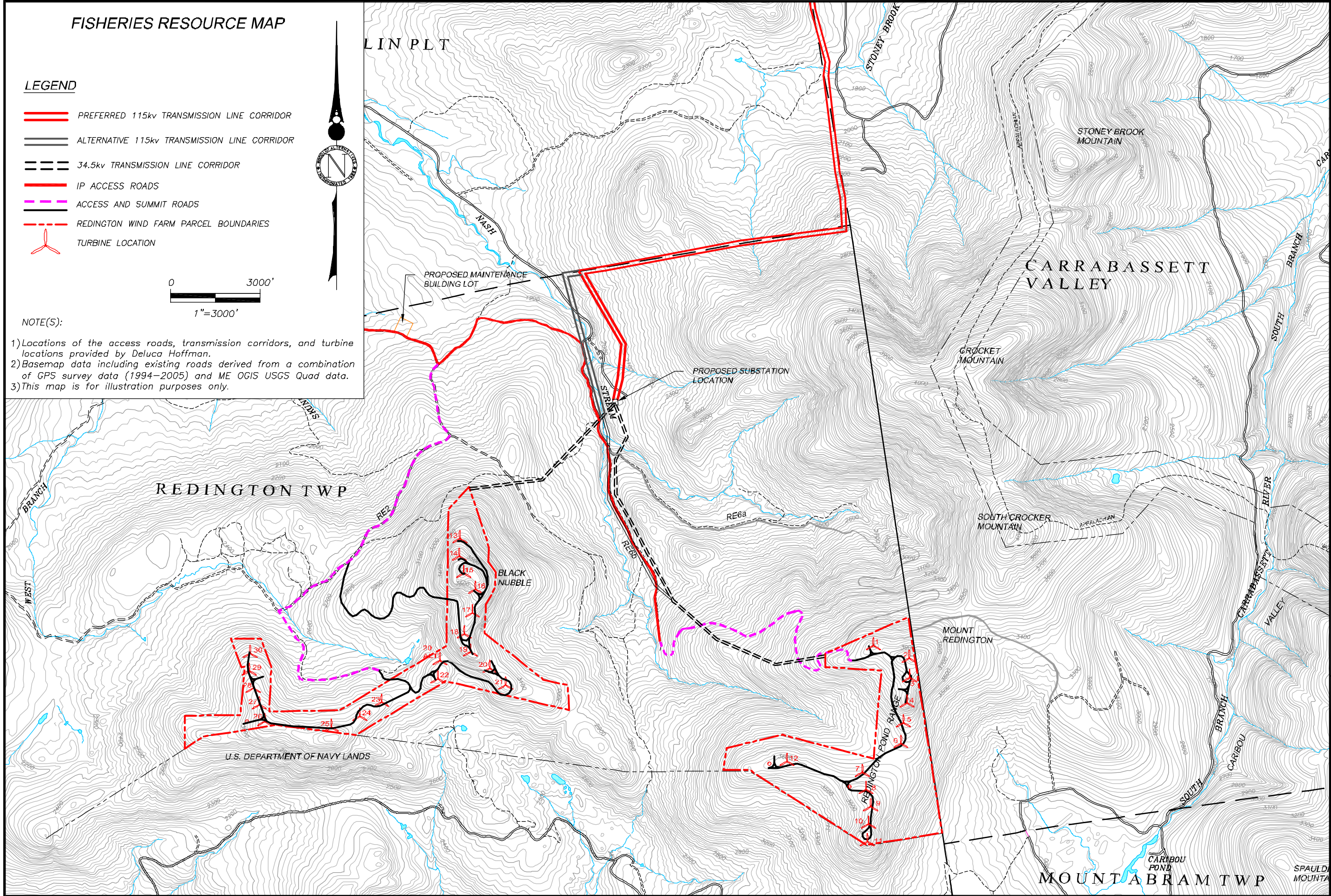
LEGEND


-  PREFERRED 115kv TRANSMISSION LINE CORRIDOR
-  ALTERNATIVE 115kv TRANSMISSION LINE CORRIDOR
-  34.5kv TRANSMISSION LINE CORRIDOR
-  IP ACCESS ROADS
-  ACCESS AND SUMMIT ROADS
-  REDINGTON WIND FARM PARCEL BOUNDARIES
-  TURBINE LOCATION



NOTE(S):

- 1) Locations of the access roads, transmission corridors, and turbine locations provided by Deluca Hoffman.
- 2) Basemap data including existing roads derived from a combination of GPS survey data (1994-2005) and ME OGIS USGS Quad data.
- 3) This map is for illustration purposes only.



FISHERIES RESOURCES MAP				
REDINGTON WIND FARM REDINGTON MOUNTAIN WINDPOWER, LLC				
57 RIVER ROAD YARMOUTH, MAINE				
 WOODLOT ALTERNATIVES, INC. ENVIRONMENTAL CONSULTANTS				
PROJECT NO. 102127		FIGURE NO. 7-6		
SCALE: 1"=3000'		DATE: AUGUST 2005		
SHEET TITLE: FISHERIES RESOURCES MAP		NO. 1		
DATE: 08/10/05		REVISED: 08/10/05		