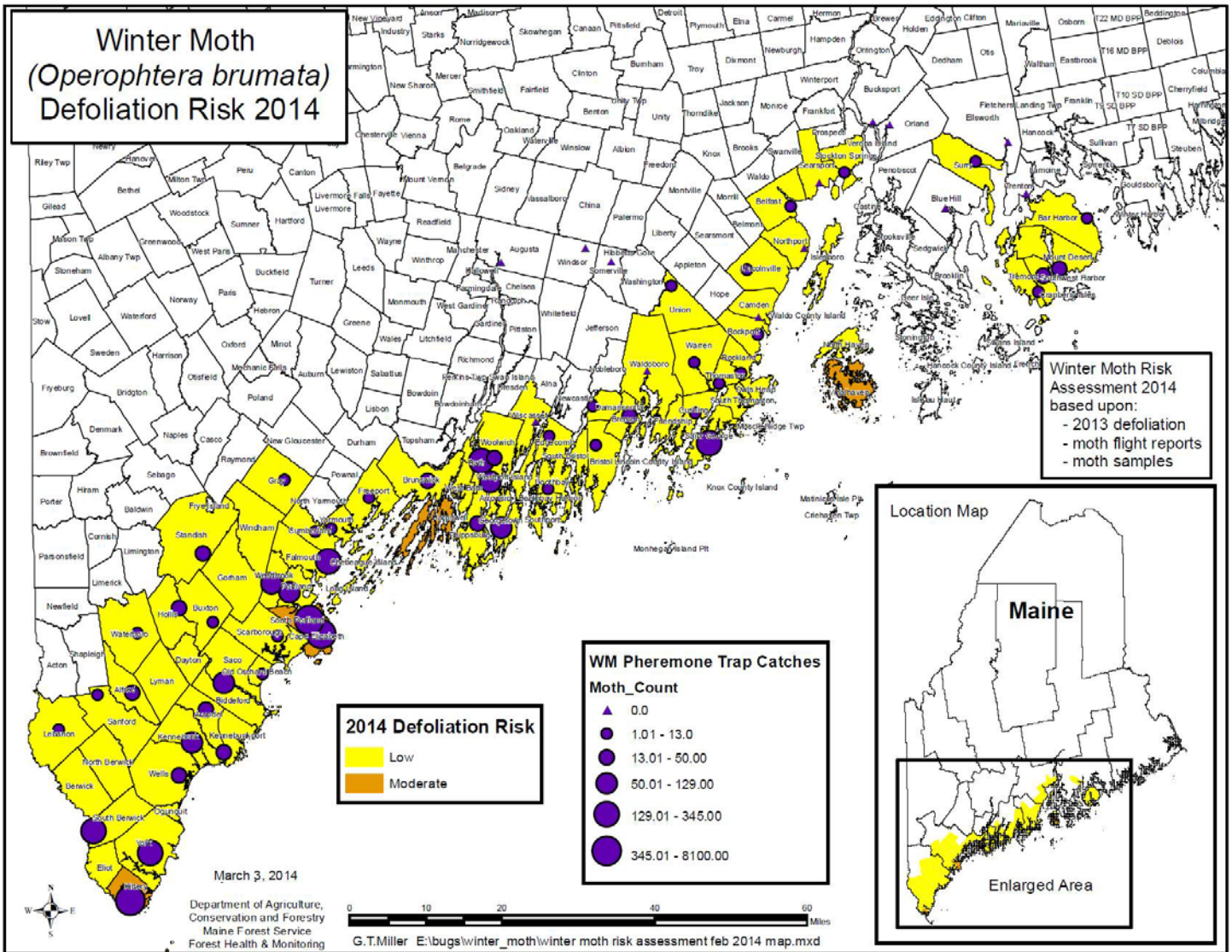


Winter Moth Defoliation Risk 2014



This map predicts risk for winter moth (*Operophtera brumata*)- caused defoliation in spring 2014. Estimates of risk are based on locations with mapped defoliation in 2013, moth flight reports from our on-line survey in December and other customer calls, moth samples submitted by the public and in pheromone traps set by the Maine Forest Service in December 2013. The risk level was also adjusted to reflect the weather-related very brief adult emergence period that occurred in 2013-14.