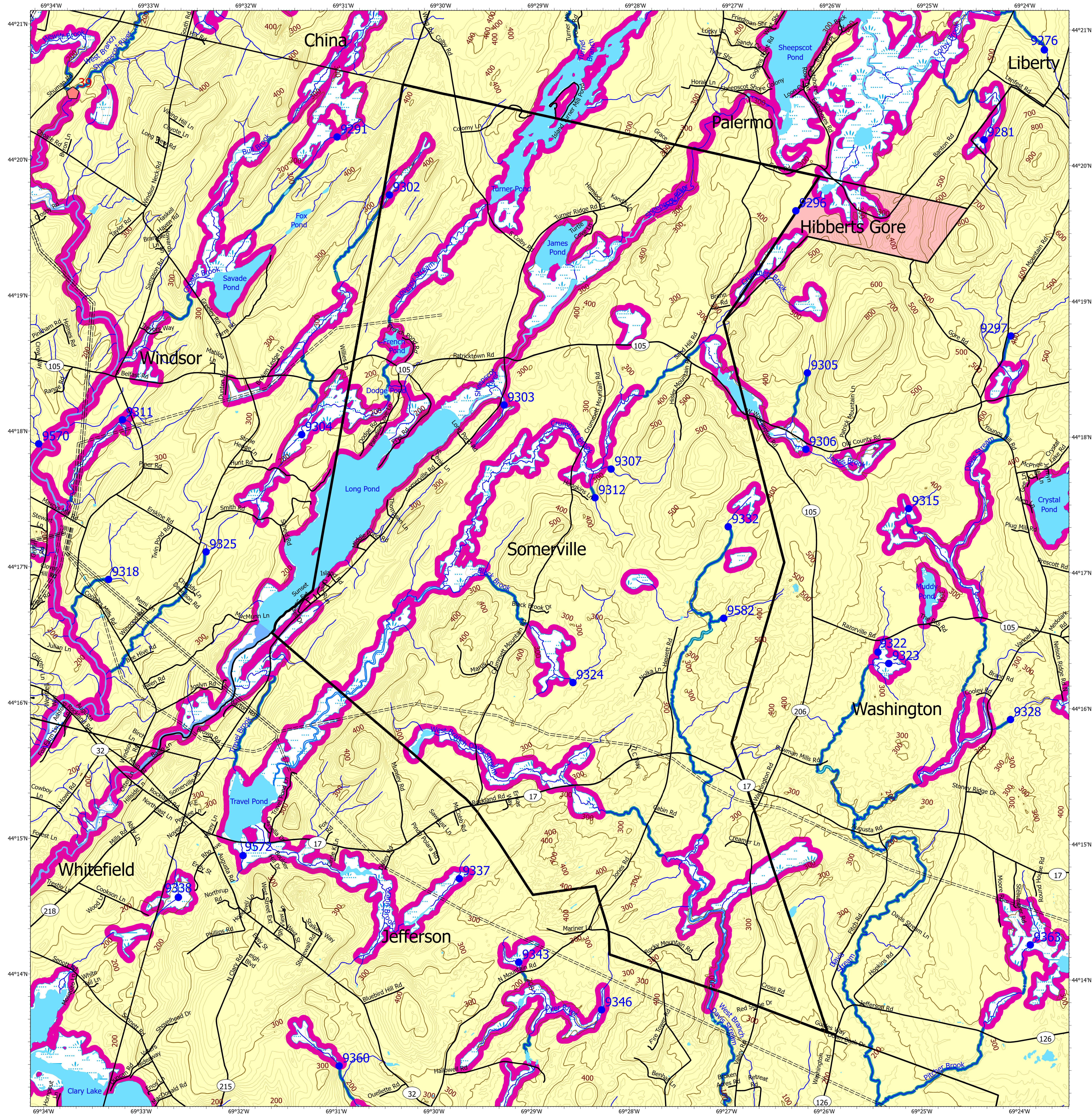


Statewide Standards for Timber Harvesting in the Shoreland Area* Map



This map is **ADVISORY**, for planning purposes only. Actual ground conditions and water body locations determine where and how MFS timber harvesting rules apply. Contact the MFS for additional information/assistance from a MFS Forester.

- ### Wetlands
- Non-forested Wetlands Greater Than 10 acres (Lacustrine, Palustrine)
 - Emergent or Marine Wetland

Department of Agriculture, Conservation and Forestry
Maine Forest Service

Maine Forest Service

For additional information, please contact the MFS at:
1-207-287-2791 or 1-800-367-0223 (in-State)
Email us at: forestinfo@maine.gov
or on the web at: www.maine-forestservice.gov

*See MFS Rule - Chapter 21 for additional information.

- SWS Town
- Outside Maine
- LUPC - Unorganized or Deorganized Town
- FON Town
Statewide Standard Rules do not apply (Town/DEP Standards apply)

Forest Operation Notification & Shoreland Area* Map

Somerville

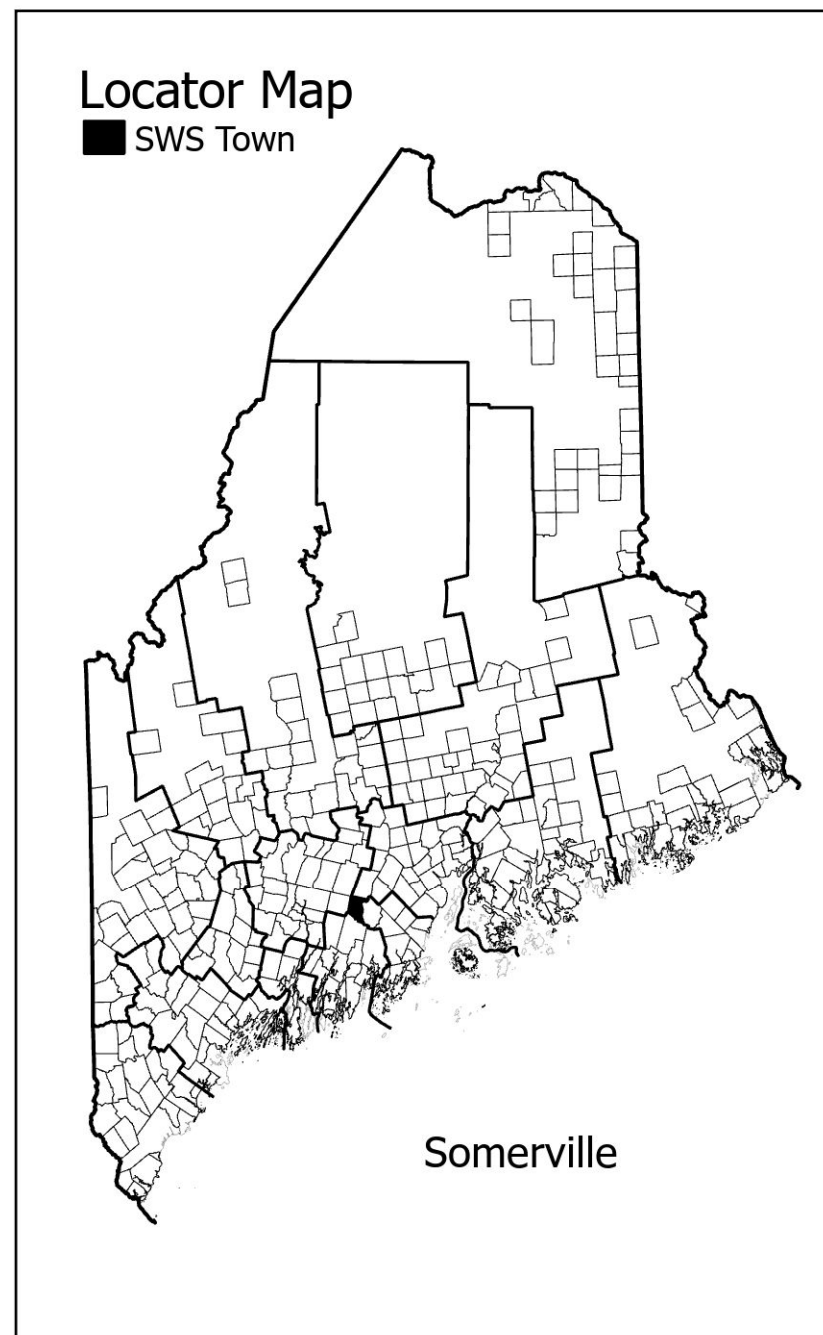
- ### Drainage Points
- 1234 300 Acre Drainage Point (start of the 75ft buffer)
1234 - ID Number (location info)
 - 56 25 Square Mile Drainage Point (start of the 250 ft buffer)
56 - ID Number (location info)

August 2025

Adoption Date
10/24/2014

Buffers

- 250 Foot Buffer Zones
Great Ponds
Non-forested Wetlands greater than 10 acres
Rivers below the 25 square mile drainage point
Coastal wetlands
Tidal Waters
- 75 Foot Buffer Zones
Streams between the 300 acre drainage point and the 25 square mile drainage point
- Shoreline Integrity - Streams draining less than 300 acres, ponds and non-forested wetlands greater than 0.1 acres and less than 10 acres



1 0.5 0 1 2 Miles