

MOOSEHEAD LAKE REGION

TRAILS PLANNING

2014 Update

Rex Turner

ME Bureau of Parks and Lands

(207) 287-4920

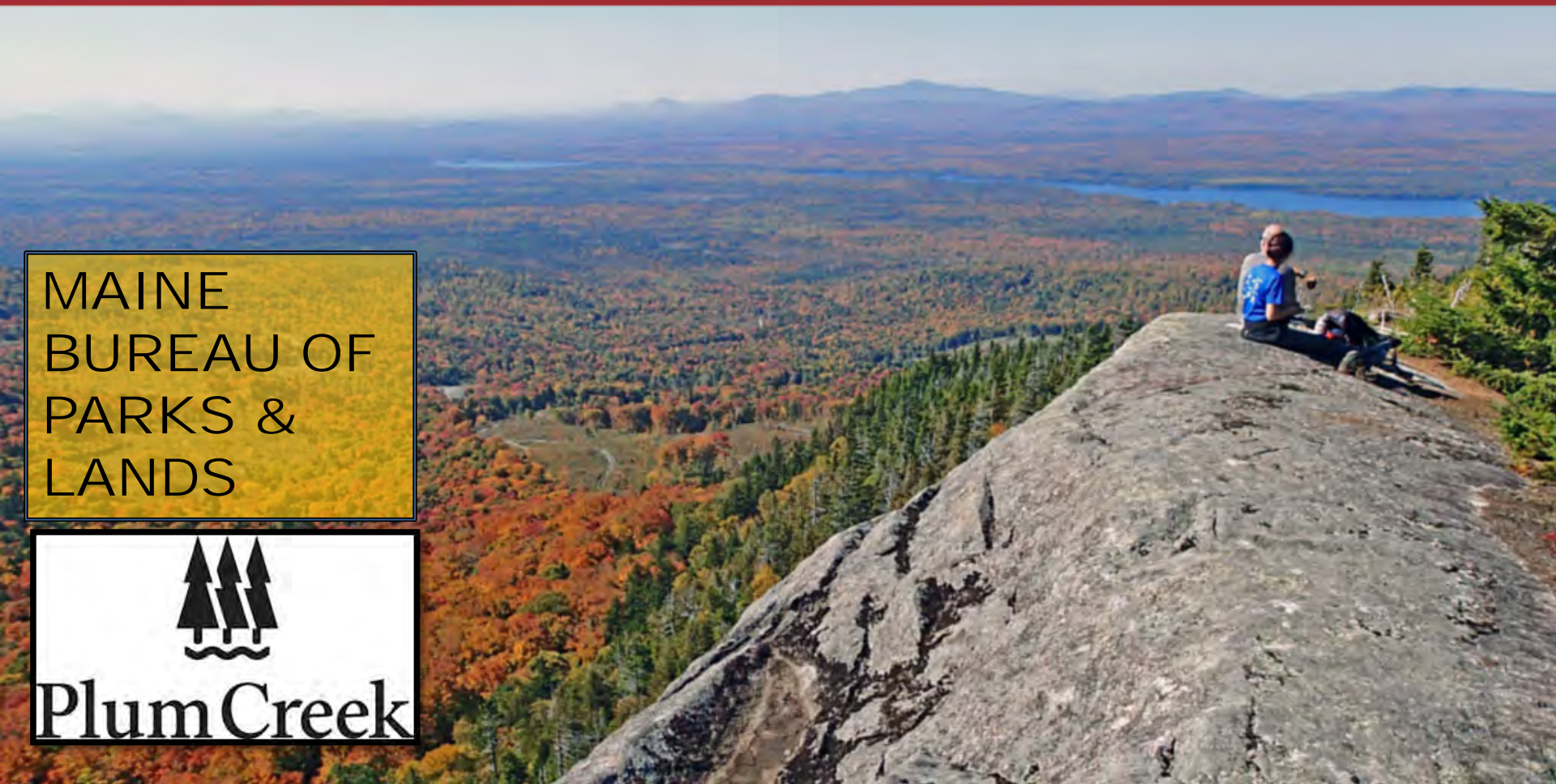
Rex.turner@maine.gov

www.maine.gov/dacf/mooseheadtrails

MAINE
BUREAU OF
PARKS &
LANDS



Plum Creek



TRAILS PLANNING

What has been done to date?

- ❖ Developed a prioritized list of potential non-motorized trail projects on Plum Creek and ME Bureau of Parks and Lands properties in the Moosehead Lake Region (in conjunction with a steering committee made up of stakeholders).
- ❖ Conducted field work to layout potential trails and to ensure they do not unduly impact resource values such as unique, rare, or endangered plant and animal species.
- ❖ Followed Moosehead Lake Region Concept Plan procedures to establish 6.9 miles of linear trail easements totaling almost 40 acres of trail easement area on Plum Creek land.
- ❖ Constructed 5.1 miles of new trail collectively at the Eagle Rock Trail and in the extension of the Number 4 Mt. Trail.
- ❖ Redesigned/improved 1.75 miles of trail at Number 4 Mt.
- ❖ Began construction of a parking lot/ trailhead area in Little Moose Public Lands to serve the new Eagle Rock Trail.

TRAILS PLANNING

Eagle Rock Trail



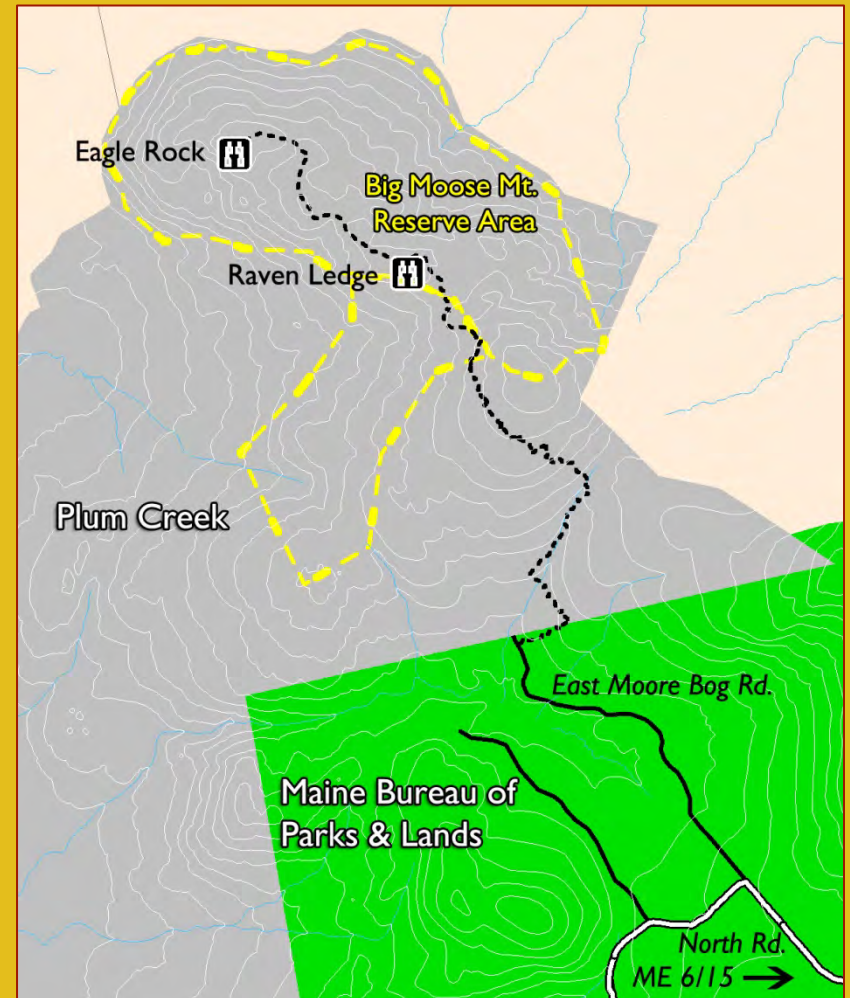
- ❖ 3.7 miles of new trail (one-way), accessed from ME BPL's Little Moose Public Lands just west of Greenville
- ❖ Primitive footpath through mix of working forest and forest reserve area. Great views of the northern forest.
- ❖ Moderate hike not requiring long sections of steep scrambling or climbing.
- ❖ Constructed by the Maine Conservation Corps.



MOOSEHEAD LAKE REGION

TRAILS PLANNING

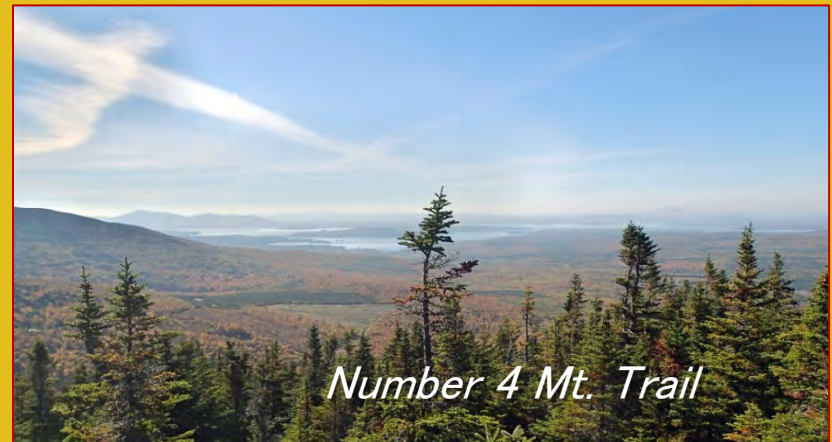
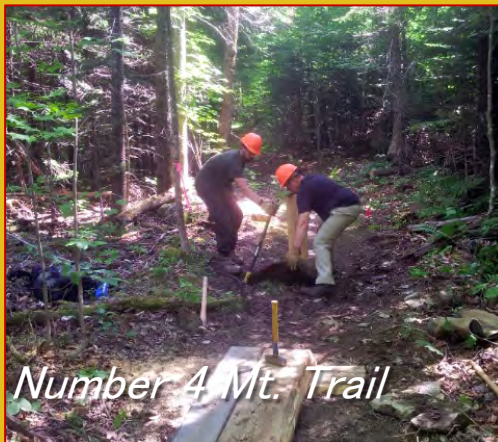
Eagle Rock Trail



TRAILS PLANNING

Number Four Mt. Trail

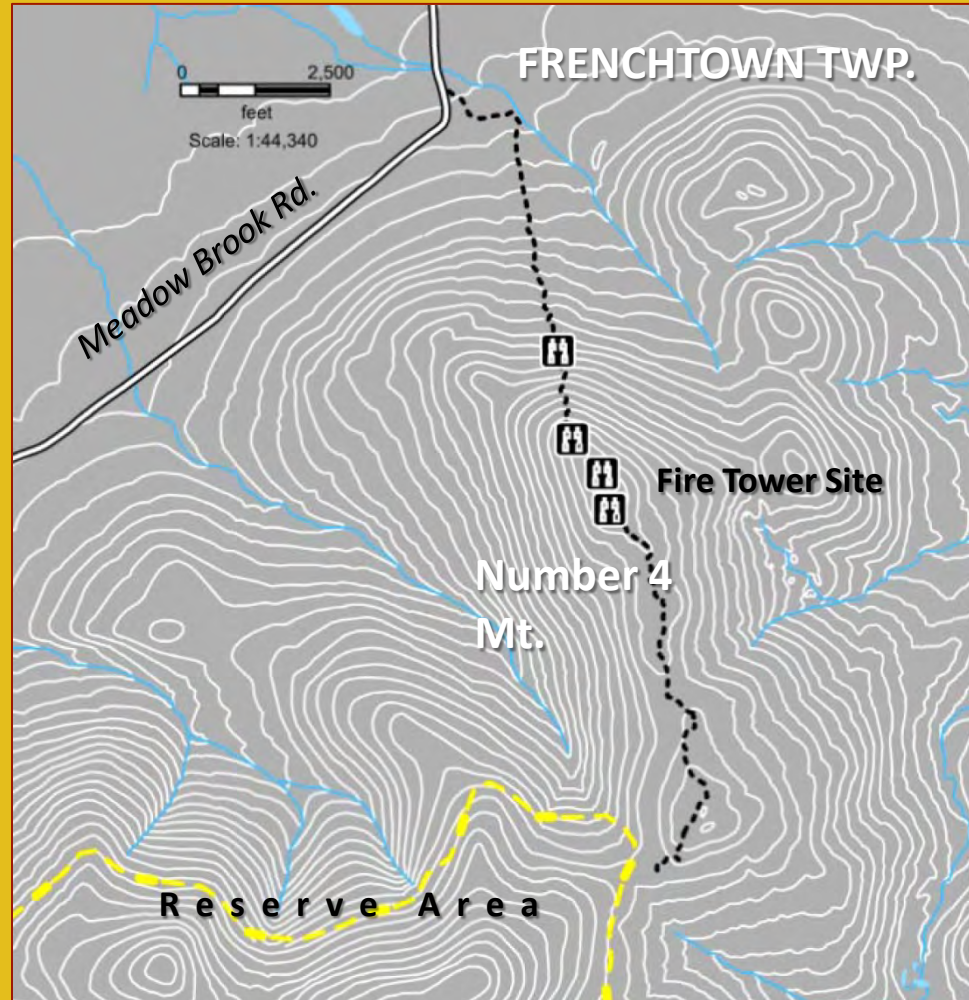
- ❖ 1.75 miles of redesigned/improved trail accessed from a to-be-developed trailhead off the Meadow Brook Rd. in Frenchtown TWP. Approx. 1.4 miles of new trail beyond fire tower.
- ❖ Primitive footpath through mix of regenerating hardwood forest and softwood dominated ridge top.
- ❖ Moderately steep trail to closed fire tower; relatively level ridge hike beyond the tower.
- ❖ Constructed by the Maine Conservation Corps and the Appalachian Mountain Club.
- ❖ Part of connection to conceptual trail network linking Number 4 Mt., Baker Mt., and beyond to AMC lands and other existing and conceptual trails.



MOOSEHEAD LAKE REGION

TRAILS PLANNING

Number Four Mt.

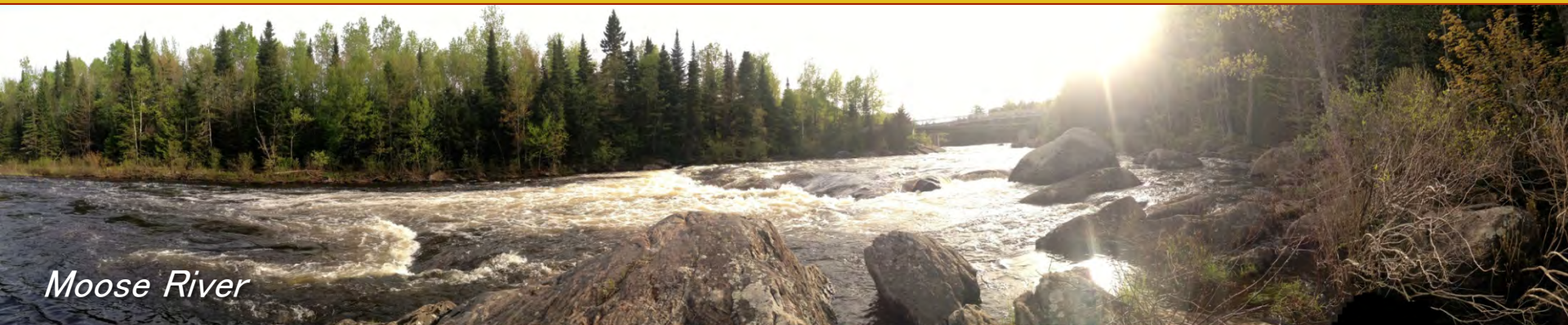


TRAILS PLANNING

Moose River

(Sandwich Academy Grant TWP)

- ❖ Acquisition for 0.5 miles (total) of portage trails at two locations to enable paddlers on this section of the [Northern Forest Canoe Trail](#) to bypass the most challenging whitewater rapids without needing to portage a full 3 miles around the entire river section.
- ❖ Construction planned for 2015.



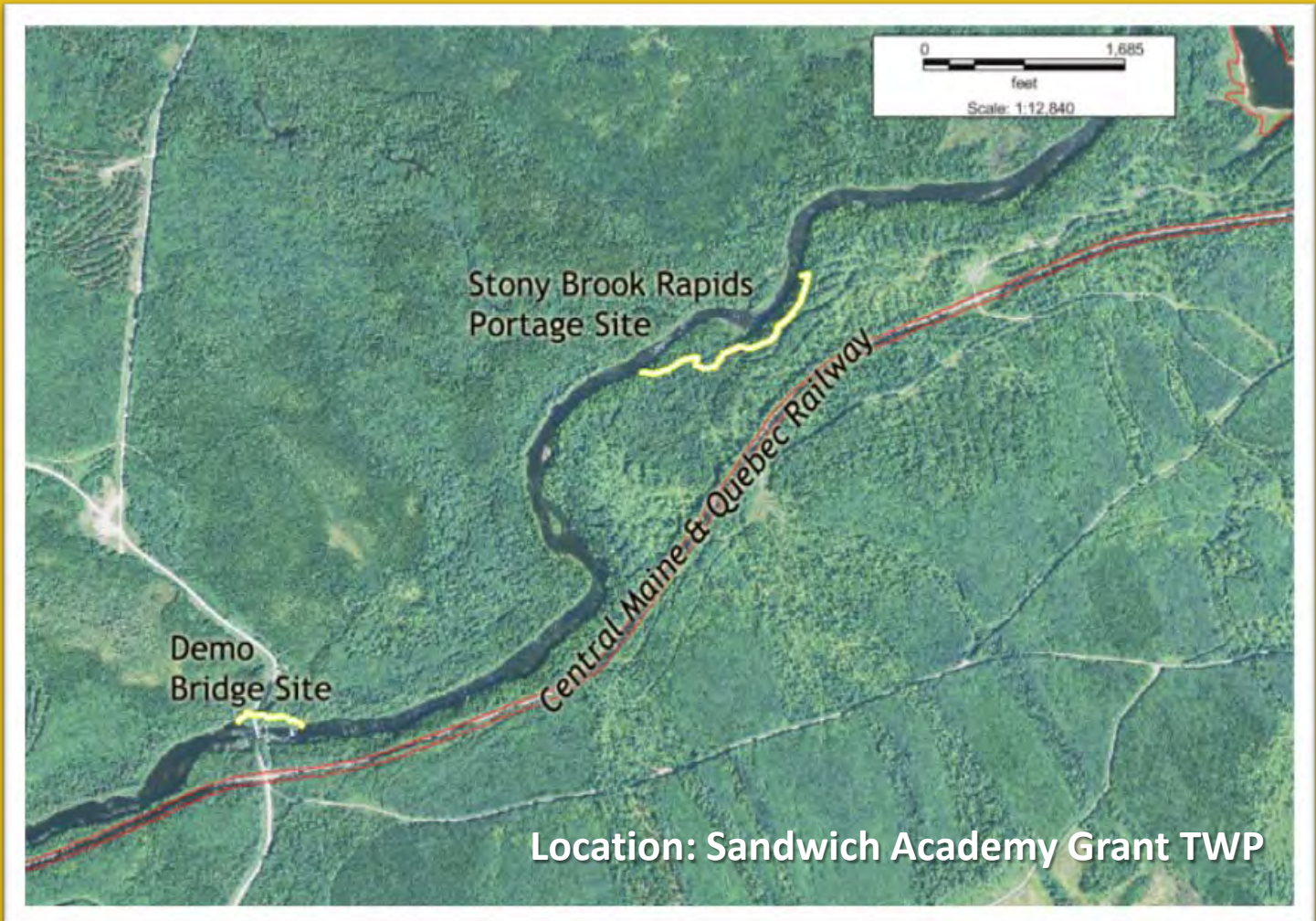
Moose River

MOOSEHEAD LAKE REGION

TRAILS PLANNING

Moose River

(Sandwich Academy Grant TWP)



TRAILS PLANNING

Other Parks & Lands Non-motorized Projects

- ❖ Three Bureau trail projects have been occurring in the Moosehead Lake Region in 2014 separate of the trails planning and development project made possible by the Moosehead Lake Region Concept Plan.
- ❖ These projects include rehabilitation of trails on Little Moose Public Lands (Little Moose Mt. trails), rehabilitation of portions of the Big Spencer Mt. trail (Big Spencer Mt. Ecological Reserve – Maine Public Lands), and expansion of Nordic ski trails at Lily Bay State Park.



Little Moose Mt. Trail

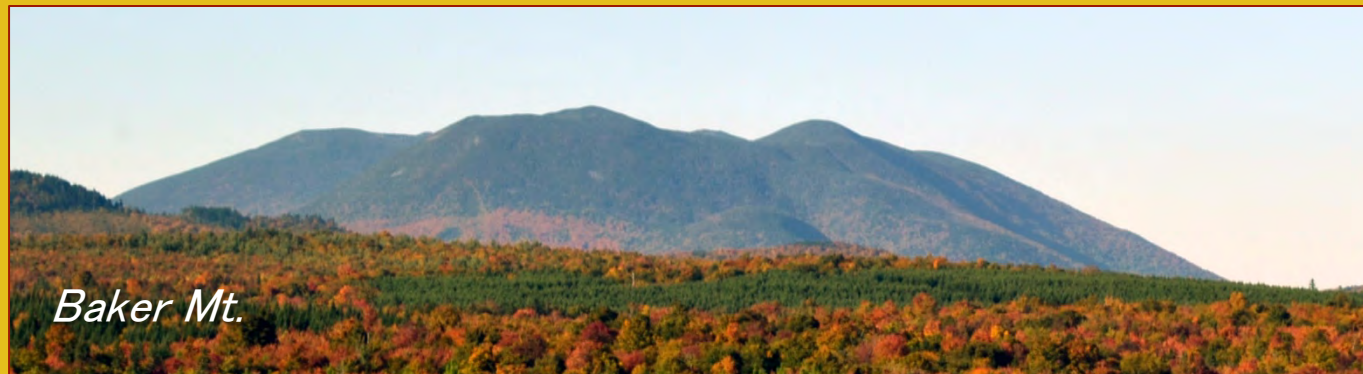
TRAILS PLANNING

What is being planned
right now?

Ongoing, on-the-ground efforts are underway to lay out trail routes for consideration in 3 locations: a hiking trail on Elephant Mt. in Bowdoin College Grant West TWP, hiking and (if found appropriate) co-located mt. biking trail on Blue Ridge in Bowdoin College Grant West TWP, continuing the extended Number 4 Mt. hiking trail to Baker Mt.'s northwestern arm (Beaver Cove TWP).



Elephant Mt. from Blue Ridge



Baker Mt.

TRAILS PLANNING

What else might be possible?



- The planning approach taken for this project is to identify and explore potential trails and to spend resources (planning time, money, and trail easement acreage) on highest priorities first.
- Trail planning associated with this project and BPL's Little Moose Public Lands is intended to be dovetailed with management planning for this property (anticipated for 2015).
- Other trail projects, such as further protecting and enhancing the B-52 trail on Elephant Mt. and evaluating a scenic overlook trail in Sandwich Academy Grant TWP are under consideration.
- Eventually, planning will address the need for coordinated signage, information, and interpretive materials.

MOOSEHEAD LAKE REGION

TRAILS PLANNING

How do I learn more?

Rex Turner

Outdoor Recreation Planner

ME Bureau of Parks and Lands

(207) 287-4920

Rex.turner@maine.gov

www.maine.gov/dacf/mooseheadtrails

