

# A-35-1

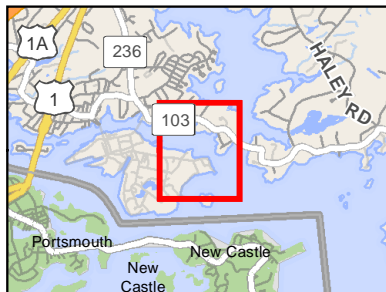
## Seavey Island Back Channel

Kittery, ME

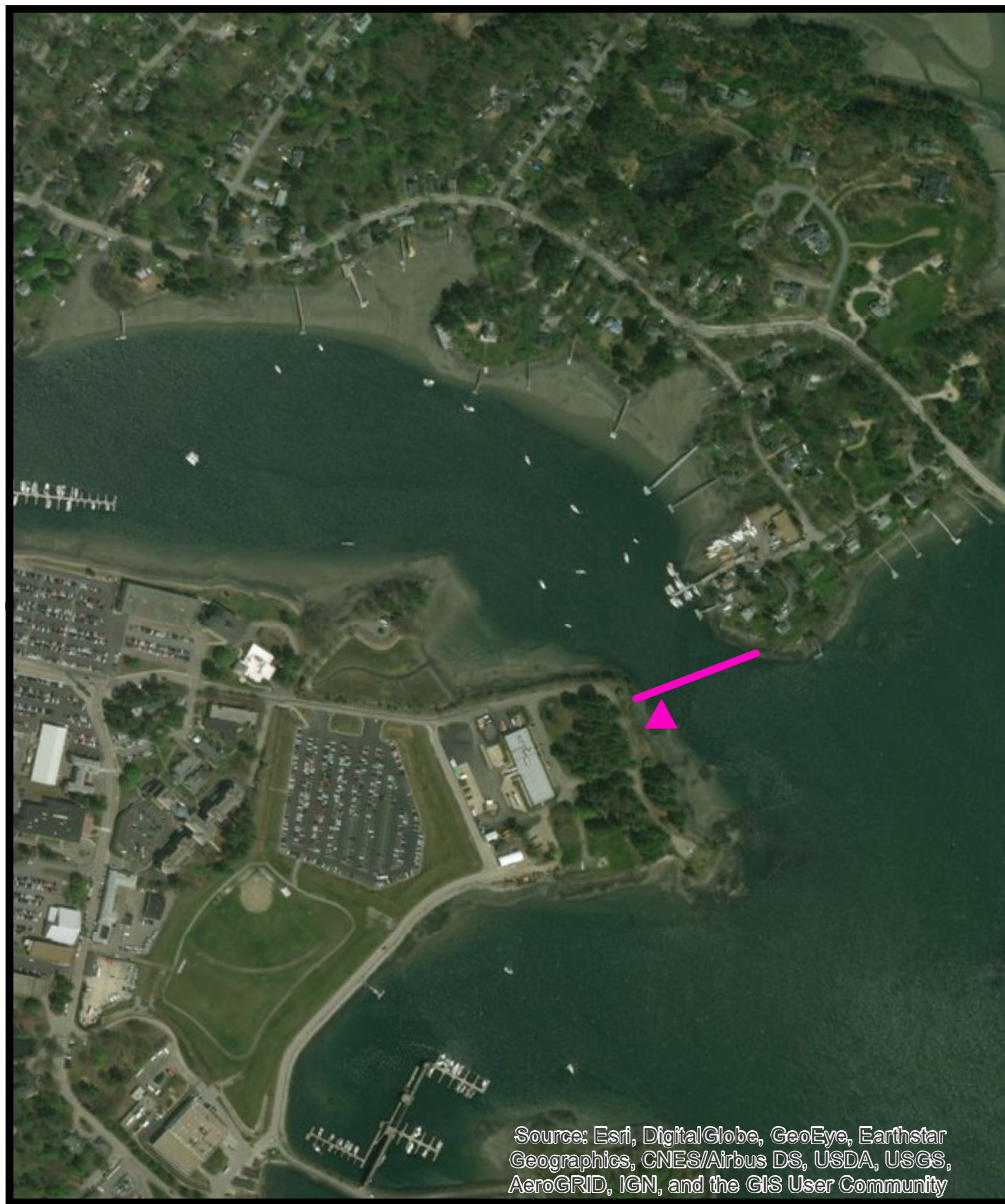
0 500 1,000  
Feet



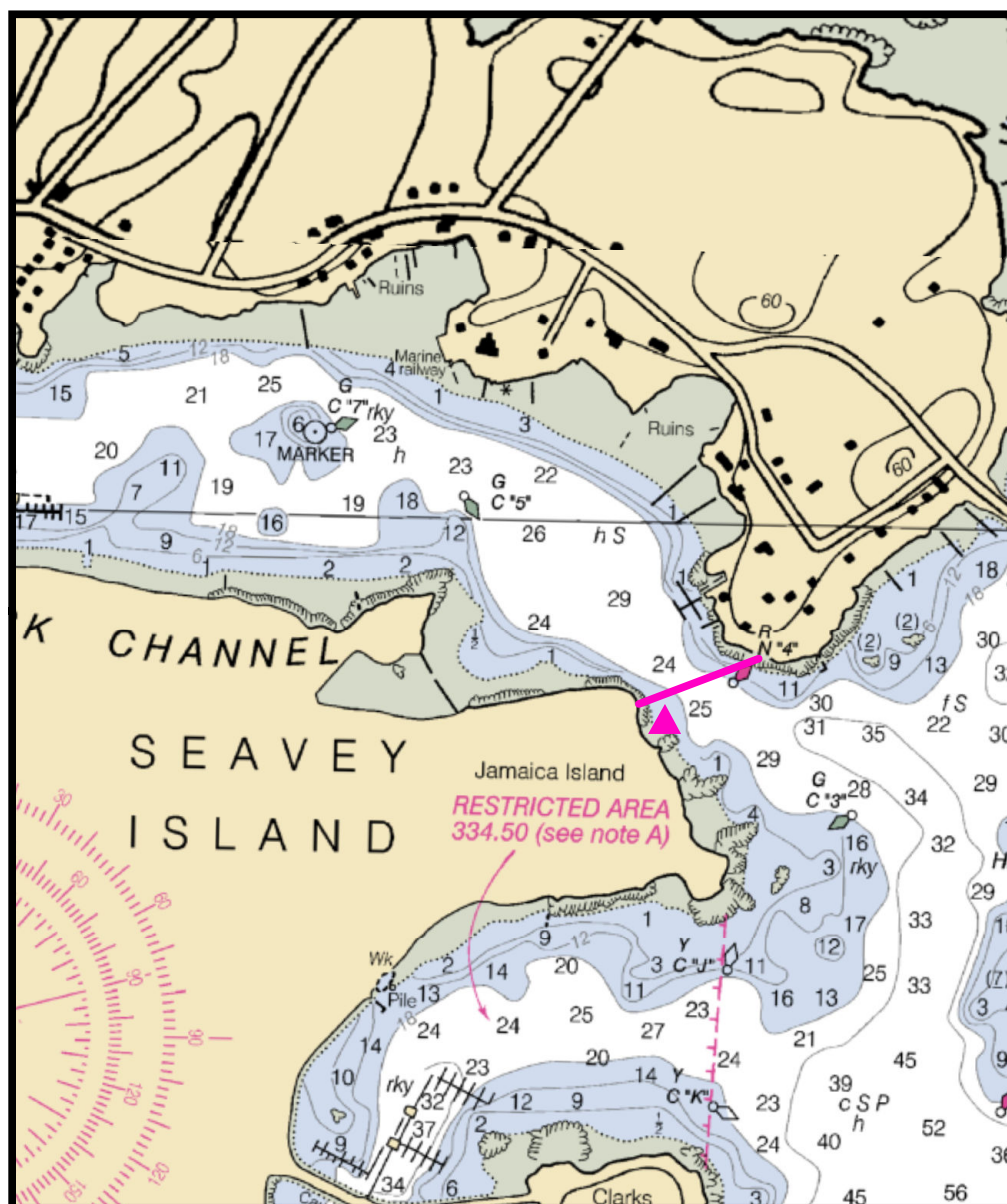
Printed: 4/11/2018



Legend			
	Boat Launch		Collection point
	Containment boom		Tide slide
	Collection point		Vac truck
	Staging area		Skimmer
	Response vessel		Command post



Source: Esri, DigitalGlobe, GeoEye, Earthstar Geographics, CNES/Airbus DS, USDA, USGS, AeroGRID, IGN, and the GIS User Community



# Seavey Island Back Channel

**Town** Kittery, ME

**Port Region** New Hampshire and Southern Maine

**Latitude** 43° 04.899 N **Longitude** 70° 43.395 W

**Strategy** A-35-1

**NOAA Chart #** 13283\_2 **ESI Map #** 54D

**EVI Map #** 2

## Resources At Risk

**ESI Shoreline Type(s)** Exposed, wave cut platforms (bedrock, mud, clay)  
Mixed sand and gravel beaches

**Environmental Concerns** Bald eagle nest, shorebirds, eelgrass, mudflats, restored wetland

## Strategy Information

**Strategy Purpose** To prevent oil from entering Back Channel behind Seavey Island

**Work Assignment** Deploy 450' of boom from Jamaica Island (Navy Yard) to Kittery mainland shore

**Staging Areas** Access at:  
(1) Traip Academy boat launch, 12 Williams Ave., Kittery (limited parking)  
(2) Kittery town boat launch, Pepperell Road, Kittery (not all tide)  
(3) Pierce Island boat launch, Portsmouth  
(4) PNSY (with Navy permission / credentialing)

**Site Access** By water and from Navy Yard Shore

**Nearest Boat Ramp** Same as staging areas

**Collection Points** Possible collection from Navy Yard shore

**Approx. Tidal Range (feet)** 9

**Max Current (knots)** **Flood** **Ebb** **Source**

## Special Instructions

## Recommended Equipment / Resources

**Length of Boom (feet)** 450 **Type of Boom** 12" - 18" containment boom

**Recommended Equipment (Minimum)** 2 - anchor systems: 35 lb. Danforth or equivalent and line for 3:1 scope plus tag line with buoys OR  
2 - shoreside connections.  
1 - skimmer and storage  
2 - workboats with minimum 90 hp  
2 - boat operators  
4 - laborers

Unless otherwise indicated, the boom length given is the distance measured on the chart.  
Actual length required may vary with conditions.