



## About Wraparound Maine

- Statewide implementation of *High Fidelity Wraparound* is based on the principles and standards of the National Wraparound Initiative
- The initiative launched in Maine in January 2007 and has served a total of 850 unique youth and families to date
- Wraparound Maine serves close to 300 families at any given time
- Average length of stay in services is nine months
- Managed by the Maine Department of Health and Human Services Office of Child and Family Services (OCFS) through contracts with six provider agencies in nine geographic areas

## Target Population

- Children and youth, ages 5 to 18, with serious behavioral challenges who are in residential treatment or in a juvenile corrections facility or at risk of such placements
- Study included 148 children and youth enrolled in MaineCare

## Data Methods

- Data came from MaineCare Paid Service Claims of recipients of Wraparound Maine services
- Included children and youth who entered Wraparound Maine between 7/1/2007 and 6/30/2009
- Pre-Post study period includes:
  - **Pre-Wraparound** – a 12-month time period before entry into Wraparound Maine
  - **Post-Wraparound Initiation** – a 12-month time period starting on the date the child enters Wraparound Maine

## Wraparound Maine:

### A Mental Health Service Use and Cost Study

This snapshot highlights the results of a mental health service use and cost study on children and youth enrolled in Wraparound Maine. Wraparound Maine is a statewide, multi-site initiative that supports an integrated planning approach for children and youth with complex needs.

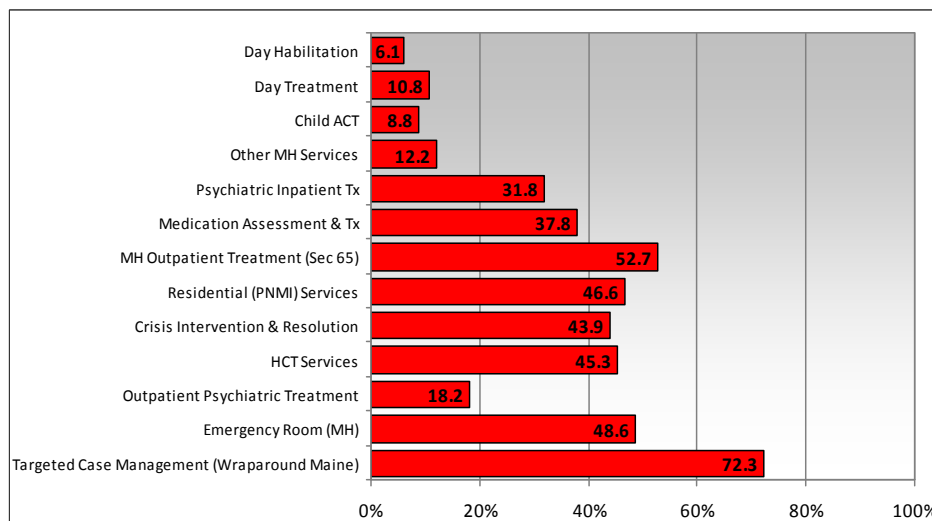
“Wraparound” is a family centered, strengths based, highly individualized planning process to help at risk children and youth achieve improvements in functional, educational, and independence related outcomes.

Service planning is accomplished by “wrapping” formal and informal services and supports around the youth and family based on their unique individual strengths and needs. The goal is to help youth and their parents or caregivers with the support needed to keep their child at home, in school and out of trouble.

### Wraparound Maine Child/Youth Demographics

Age Group	Male	Female	Total
6 to 12 Years	28.6%	38.0%	31.8%
13 to 17 Years	69.4%	60.0%	66.2%
18 Years and Older	2.0%	2.0%	2.0%
Total (n=148)	66.2%	33.8%	100.0%
<b>Average Age (in Years)</b>	<b>13.77</b>	<b>13.35</b>	<b>13.62</b>

The study sample was composed mostly of males (66.2%) and ranged in age between 5.91 to 21.06 with an average age of 13.62



Prior to enrollment in Wraparound, these children and youth were relatively high users of mental health services with:

- Nearly one-half (47%) using residential (PNMI) services
- Nearly 1 in 3 children having a psychiatric inpatient stay
- Nearly one-half (49%) using Emergency Department services
- More than two-thirds (44%) using crisis intervention services

## Pre-Post Wraparound Average Per Child Per Year Mental Health Expenditures

Service Type	Pre-Wraparound Average Per Child Expenditures	Post-Wraparound Initiation Average Per Child Expenditures	Pre-Post Difference	Percent Change
Targeted Case Management (Wraparound Maine) <sup>1</sup>	\$3,858.02	\$7,664.15	\$3,806.13	↑ 99%
Emergency Room (MH)	\$441.16	\$467.47	\$26.31	↑ 6%
HCT Services	\$7,456.25	\$6,735.99	-\$720.26	↓ 10%
Crisis Intervention & Resolution	\$2,343.48	\$1,637.15	-\$706.33	↓ 30%
Residential (PNMI) Services <sup>2</sup>	\$60,293.95	\$43,027.68	-\$17,266.27	↓ 29%
MH Outpatient Treatment (Sec 65)	\$1,406.07	\$1,835.59	\$429.52	↑ 31%
Medication Assessment & Tx	\$810.88	\$779.16	-\$31.72	↓ 4%
Psychiatric Inpatient Tx	\$55,488.75	\$31,667.34	-\$23,821.41	↓ 43%
Outpatient Psychiatric Tx	\$551.19	\$693.23	\$142.04	↑ 26%
Other MH Services	\$786.21	\$968.82	\$182.61	↑ 23%
Child ACT	\$8,712.24	\$6,998.02	-\$1,714.22	↓ 20%
Day Treatment	\$9,544.98	\$7,925.49	-\$1,619.49	↓ 17%
Day Habilitation	\$10,545.00	\$14,639.64	\$4,094.64	↑ 39%
<b>Total Mental Health</b>	<b>\$58,403.91</b>	<b>\$41,873.16</b>	<b>-\$16,530.75</b>	<b>↓ 28%</b>

<sup>1</sup> Targeted Case Management (TCM) expenditures pre-Wraparound initiation reflect use of non-wrap TCM services. Wraparound Maine services are billed through Section 13 Targeted Case Management. The increase in TCM expenditure pre to post reflect the initiation of Wraparound services.

<sup>2</sup> Residential Treatment Services includes all PNMI Child Care and Crisis Residential facility expenditures.

The results showed a 28% reduction in overall average per child mental health expenditures in the 12-month period following the initiation of Wraparound and significant expenditure reductions in the following service areas:

- Crisis Intervention and Resolution Services
- Residential Treatment Services
- Inpatient Hospital Services
- Children's Assertive Community Treatment

Following the initiation of Wraparound services, expenditures increased in the following areas:

- Mental Health Outpatient Services (*Section 65: MH Agency Based*)
- Mental Health/Psychiatric Outpatient (*Hospital Affiliated*)
- Targeted Case Management (*indicates expenditures associated with Wraparound Services*)

### Questions to Consider . . .

1. Are the changes in mental health service use associated with improved social and emotional outcomes for youth?
2. Are these changes in service use sustained after discharge from Wraparound Maine?
3. Are the observed service use changes associated with involvement in Wraparound Maine?

#### Contact Office of Continuous Quality Improvement Services

Tel: (207) 287-4296  
TTY: 1-800-606-0215

#### Visit OCQIS Website

<http://www.maine.gov/dhhs/OI/index.shtml>



Paul R. LePage, Governor

Department of Health and Human Services

Maine People Living Safe, Healthy and Productive Lives

Mary C. Mayhew, Commissioner