

**Sea Urchin Zone Council Meeting**  
**Ellsworth City Hall**  
**Thursday, April 28, 2011**  
**5:30 pm**

Attendance

SUZC: Bill Sutter (chair), Brian Soper, Paul Fischer, Marcus Jones, Ed Fagonde, Larry Harris, Mick Devin, Atchan Tamaki

DMR Staff: Linda Mercer, Maggie Hunter

Audience: Steve Rappaport, Ryan Daniels, Adam & Wanda Johns, James Campbell, Brian Preney, Tristan Smith, Lewis Reed, Mike Reed, Byron Matthews, Richard Bridges, Aaron Gilpatrick, Tim Proulx, Joe Leask, Clint Richardson, Steve Eddy

The meeting was called to order at 5:30 pm without a quorum.

DMR data presentation

Maggie Hunter presented information from the new Zone 1 harvester logbook program for the 2010-11 season, DMR's port sampling program, license counts, and DMR's spring urchin dive survey. Her slides are attached below. They generated quite a bit of discussion. Brian Preney felt the port sampling program was invalid because he and divers in his area were not interviewed. Others felt the spring survey was missing the urchins, because it was not being conducted deep enough or when the urchins were aggregated, and should be done in the winter. Marcus Jones, who participates in the survey, said he used to agree but now that he's seen how it's done he feels that the survey is reliable.

Richard Bridges commented that after the extremely hot summer, the urchins were late aggregating last fall.

Brian Soper asked the group: Where are the urchins going to come back first? He felt it would be tide pools and shallow areas. Maggie agreed that the survey showed some new urchin sites way up inside bays and rivers, contrary to her earlier belief that recovery would come from deeper areas.

There was some brief discussion about boats in Zone 2 that are fishing both seasons, by having an early season license holder on board in the early season, and then a late season license holder on board in the late season. Maggie said DMR felt this was increasing fishing effort, and may propose stopping this practice through regulation, and invited public comment.

Minutes

Having a quorum, the minutes from the March 2010 meeting were unanimously accepted and the minutes from the January 2010 meeting were filed.

Discussion of Zone 1 Season for 2011-12

Several members of the audience felt that urchins are coming back in Zone 1. Bill said we need benchmarks upon which to base increases or decreases in the season, and he hoped the research subcommittee would address the issue. Brian Preney said we are only catching 1.2% of the

biomass each year. Adam Johns said that there are a lot fewer fishermen; most of the heavy hitters are gone. Others agreed that there were too few fishermen to hurt the resource in Zone 1. Disappointment was expressed that Commissioner Olsen was not present at the meeting.

Brian Soper moved that the Zone 1 season have 10 open days early and 10 late, and that everyone be allowed to fish all 20 days instead of just 10. His motion was seconded. Mick asked what the increase was based on. Brian Preney showed him his calculations. Brian Soper said he was basing it on his experience and observations, and the small number of active fishermen in the zone.

The motion passed 6-0 with 2 abstentions.

### 2011-12 Season Calendars

Atachan Tamaki (ISF) was asked how the market was looking for next year, and whether it would be affected by Japan's recent tsunami. He said the market is poor now – he is still processing Canadian urchins – and he was not sure what it would be like next fall.

The meeting was adjourned while the council and audience members met together to develop their recommendations for the days on the calendar for next season, and then the council reconvened.

The following calendars were proposed. There was little discussion, except that Mr. Tamaki felt that urchins would be spawning after March 15, and favored moving the proposed open days on March 19 and 20 into December.

Zone 1 Dive – passed 7-0 with 1 abstention.

Zone 1 Drag – passed 7-0 with 1 abstention.

Zone 2 Dive Early – passed 7-0 with 1 abstention.

Zone 2 Dive Late – passed 5-2 with 1 abstention.

Zone 2 Drag Early – passed 6-1 with 1 abstention.

Zone 2 Drag Late – passed 5-2 with 1 abstention.

### Next meeting

Bill proposed that the next meeting be Thursday, May 26, after the election results are known. (Votes must be postmarked by April 29.) Possible locations were suggested in Bangor, Belfast, or Rockland. The agenda should include the seating of the new council, election of officers, inviting the commissioner, appointment of subcommittees, discussion of pending rule-making, and the scallop closed areas.

**Proposed 2011-12 Season Calendars as voted upon (O = Open, numbers at bottom are number of open days in the month):**

**2011 - 2012 Proposed Zone 1 Diver**

September 2011						
S	M	Tu	W	Th	F	S
				1	2	3
4	5	6	7	8	9	10
11	12	13	14	15	16	17
18	19	20	21	22	23	24
25	26	27	28	29	30	

10

October 2011						
S	M	Tu	W	Th	F	S
						1
2	3	4	5	6	7	8
9	10	11	12	13	14	15
16	17	18	19	20	21	22
23	24	25	26	27	28	29
30	31					

0

November 2011						
S	M	Tu	W	Th	F	S
		1	2	3	4	5
6	7	8	9	10	11	12
13	14	15	16	17	18	19
20	21	22	23	24	25	26
27	28	29	30			

0

December 2011						
S	M	Tu	W	Th	F	S
				1	2	3
4	5	6	7	8	9	10
11	12	13	O	O	O	17
18	19	20	O	O	O	24
25	26	27	28	29	30	31

10

**2011 - 2012 Proposed Zone 1 Dragger**

December 2011						
S	M	Tu	W	Th	F	S
				1	2	3
4	5	6	7	8	9	10
11	12	13	14	15	16	17
18	19	20	21	22	23	24
25	26	27	28	29	30	31

10

January 2012						
S	M	Tu	W	Th	F	S
1	2	3	4	5	6	7
8	9	10	11	12	13	14
15	16	17	18	19	20	21
22	23	24	25	26	27	28
29	30	31				

10

**2011 - 2012 Proposed Zone 2 Diver/Raker/Trapper Early**

September 2011						
S	M	Tu	W	Th	F	S
				1	2	3
4	5	6	7	8	9	10
11	12	13	14	15	16	17
18	19	20	21	22	23	24
25	26	27	28	29	30	

6

October 2011						
S	M	Tu	W	Th	F	S
						1
2	3	4	5	6	7	8
9	10	11	12	13	14	15
16	17	18	19	20	21	22
23	24	25	26	27	28	29
30	31					

13

November 2011						
S	M	Tu	W	Th	F	S
		1	2	3	4	5
6	7	8	9	10	11	12
13	14	15	16	17	18	19
20	21	22	23	24	25	26
27	28	29	30			

12

December 2011						
S	M	Tu	W	Th	F	S
				1	2	3
4	5	6	7	8	9	10
11	12	13	14	15	16	17
18	19	20	21	22	23	24
25	26	27	28	29	30	31

14

Proposed 2011-12 Season Calendars as voted upon (O = Open, numbers at bottom are number of open days in the month):

### 2011 - 2012 Proposed Zone 2 Diver/Raker/Trapper Late

December 2011						
S	M	Tu	W	Th	F	S
				1	2	3
4	5	6	7	8	9	10
	O	O	O			
11	12	13	14	15	16	17
	O	O	O	O		
18	19	20	21	22	23	24
	O	O	O	O		
25	26	27	28	29	30	31
	O	O	O			

14

January 2012						
S	M	Tu	W	Th	F	S
1	2	3	4	5	6	7
	O	O	O			
8	9	10	11	12	13	14
	O	O	O			
15	16	17	18	19	20	21
	O	O	O			
22	23	24	25	26	27	28
	O	O	O			
29	30	31				
	O	O				

14

February 2012						
S	M	Tu	W	Th	F	S
			1	2	3	4
5	6	7	8	9	10	11
	O	O	O			
12	13	14	15	16	17	18
	O	O				
19	20	21	22	23	24	25
	O	O				
26	27	28	29			
	O	O	O			

9

March 2012						
S	M	Tu	W	Th	F	S
				1	2	3
4	5	6	7	8	9	10
	O	O	O			
11	12	13	14	15	16	17
	O	O	O			
18	19	20	21	22	23	24
	O	O				
25	26	27	28	29	30	31
	O					

8

### 2011 - 2012 Proposed Zone 2 Dragger Early

October 2011						
S	M	Tu	W	Th	F	S
						1
2	3	4	5	6	7	8
	O	O	O			
9	10	11	12	13	14	15
	O	O	O			
16	17	18	19	20	21	22
	O	O	O			
23	24	25	26	27	28	29
	O	O	O			
30	31					
	O					

13

November 2011						
S	M	Tu	W	Th	F	S
		1	2	3	4	5
		O	O			
6	7	8	9	10	11	12
	O	O	O			
13	14	15	16	17	18	19
	O	O	O			
20	21	22	23	24	25	26
	O	O	O			
27	28	29	30			
	O	O	O			

14

December 2011						
S	M	Tu	W	Th	F	S
				1	2	3
4	5	6	7	8	9	10
	O	O	O			
11	12	13	14	15	16	17
	O	O	O			
18	19	20	21	22	23	24
	O	O	O			
25	26	27	28	29	30	31
	O	O	O			

14

January 2012						
S	M	Tu	W	Th	F	S
1	2	3	4	5	6	7
	O	O	O			
8	9	10	11	12	13	14
	O					
15	16	17	18	19	20	21
22	23	24	25	26	27	28
29	30	31				

4

### 2011 - 2012 Proposed Zone 2 Dragger Late

December 2011						
S	M	Tu	W	Th	F	S
				1	2	3
4	5	6	7	8	9	10
	O	O	O			
11	12	13	14	15	16	17
	O	O	O	O		
18	19	20	21	22	23	24
	O	O	O	O		
25	26	27	28	29	30	31
	O	O	O			

14

January 2012						
S	M	Tu	W	Th	F	S
1	2	3	4	5	6	7
	O	O	O			
8	9	10	11	12	13	14
	O	O	O			
15	16	17	18	19	20	21
	O	O	O			
22	23	24	25	26	27	28
	O	O	O			
29	30	31				
	O	O				

14

February 2012						
S	M	Tu	W	Th	F	S
			1	2	3	4
5	6	7	8	9	10	11
	O	O				
12	13	14	15	16	17	18
	O	O				
19	20	21	22	23	24	25
	O	O				
26	27	28	29			
	O	O	O			

9

March 2012						
S	M	Tu	W	Th	F	S
				1	2	3
4	5	6	7	8	9	10
	O	O	O			
11	12	13	14	15	16	17
	O	O	O			
18	19	20	21	22	23	24
	O	O				
25	26	27	28	29	30	31
	O					

8

Maggie Hunter's presentation:

## Maine Sea Urchin Data Collected by DMR

- Commercial License Sales – since 1992
- Port Samples and Interviews – since 1994-95
- Dealer Logbooks – since 1996-97
- Spring Survey – since 2001
- Taunton Bay (Zone 2) Harvester Logbooks – since 2009-10
- Zone 1 Harvester Logbooks – new in 2010-11

### Zone 1 Harvester Logbooks for 2010-11

- 54 Divers and 18 Draggers had 2010 Zone 1 licenses
- 25 Divers and 3 Draggers were active; most others reported no activity
- 14 license holders have not reported at all (delinquent) and will not be able to get their 2011 license until they submit 2010 reports.

### Zone 1 Harvester Logbook Data

- Sea urchins were landed in 14 ports from Biddeford Pool to Owls Head;  
69 % of the catch was landed in Tenants Harbor
- Total diver landings reported was 91,929 lbs;  
Total dragger landings reported was 15,996 lbs;  
Total landings reported was 107,925 lbs

data are preliminary

### Zone 1 Diver Logbook Data

- 18 of the 25 divers were Early season; 7 were Late
- Divers reported fishing from 1 to 10 days;  
the average for early season divers was 6.8 days;  
the average for late season divers was 4.4 days.
- Early season diver landings were 75,069 lbs;  
Late season diver landings were 16,860 lbs;  
Total diver landings were 91,929 lbs
- The average season's catch for a diver was 3,677 lbs; the average daily catch for a diver was 601 lbs;

the median CPUE was 167 lbs/hr.

## Zone 1 Dragger Logbook Data

- All of the 3 draggers were Early season
- Draggers reported fishing from 5 to 8 days; the average was 6.3 days.
- Total dragger landings were 15,996 lbs
- The average season's catch for a dragger was 5,332 lbs
- The average daily catch for a dragger was 842 lbs.
- The median CPUE was 207 lbs/hr.

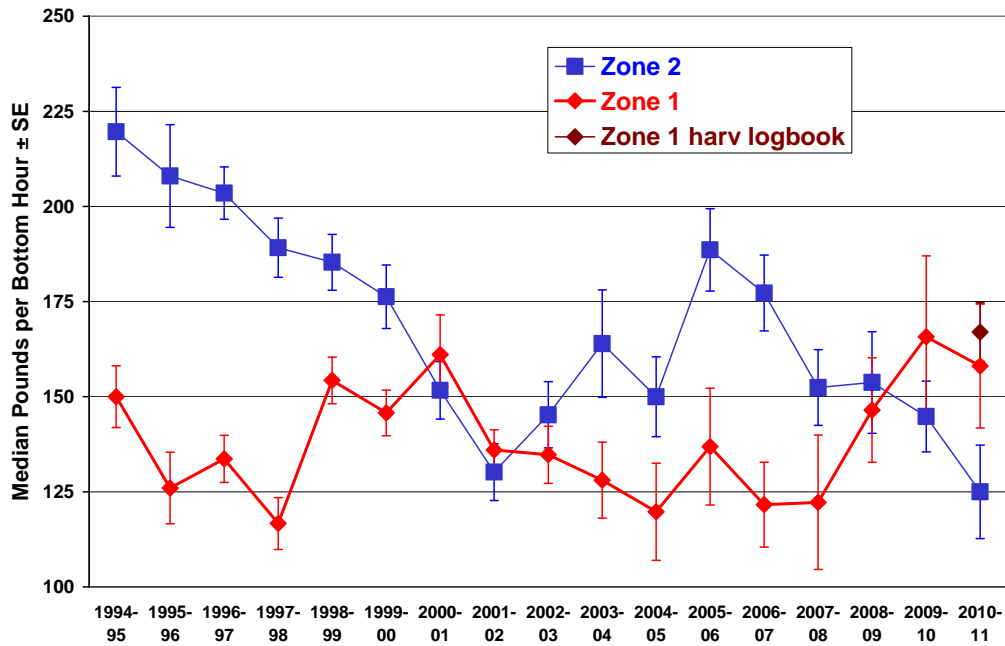
## Zone 1 Harvester Logbooks – Compliance and Agreement with Other Data

- 25 Divers and 3 Draggers were active according to harvester logbooks
- 33 Divers and 4 Draggers were active according to dealer logbooks
- Port sampler observations rarely agreed exactly with harvester logbooks

## Port Sampling Interviews

- Zone 2 catch rates have been declining for several years.
- Zone 1 catch rate increases in the past 3 years may be the result of a change in fishing strategy (quantity instead of quality), not resource recovery.
- Zone 1 catch rates from harvester logbooks and port sampling interviews agree pretty well.

## Maine Sea Urchin Diver Catch/Effort by Season and Zone



## Licenses

### Maine Commercial Sea Urchin Licenses

Year	Zone 1				Zone 2				Statewide						
	Dive	Drag	Rake	Total	Dive	Drag	Rake	Total	Dive	Drag	Rake	Harvester Totals	Tender	Buyer	Processor
1992									829	246		1,075			
1993									1,437	567		2,004			
1994									1,725	1,000		2,725	843		
1995	611	237	3	851	580	404	5	989	1,191	641	8	1,840	736	96	18
1996	501	167	2	670	562	327	4	893	1,063	494	6	1,563	730	70	19
1997	405	133	1	539	514	287	2	803	919	420	3	1,342	648	65	20
1998	348	95	1	444	460	260	1	721	808	355	2	1,165	544	51	18
1999	332	87	2	421	437	252	2	691	769	339	4	1,112	538	42	15
2000	313	74	2	389	407	242	2	651	720	316	4	1,040	530	31	18
2001	281	65	2	348	383	240	2	625	664	305	4	973	453	30	11
2002	246	53	2	301	343	242	1	586	589	295	3	887	355	23	12
2003	182	44	2	228	289	224	1	514	471	268	3	742	276	18	13
2004	134	30	2	166	261	206	1	468	395	236	3	634	212	12	12
2005	106	27	1	134	234	187	1	422	340	214	2	556	155	13	13
2006	83	24	0	107	213	178	1	392	296	202	1	499	150	13	12
2007	75	24	0	99	195	164	1	360	270	188	1	459	142	12	12
2008	61	21	0	82	188	163	1	352	249	184	1	434	138	13	12
2009	60	18	0	78	181	152	1	334	241	170	1	412	192	12	13
2010*	54	18	0	72	167	157	2	326	221	175	2	398	97	11	11

\* 2010 includes 16 Passamaquoddy licenses: 14 Zone 2 dragners, 1 Zone 1 dragger, and 1 Zone 2 Rake/Trap

# Spring Dive Survey

- No significant recovery in either zone overall since 2004.
- There have been further declines in eastern Zone 2 but some signs of recovery in western Zone 2.

Mean Sea Urchin Biomass by Zone and Year

