

Initial results of

***Lobster Effort  
Questionnaire***

***Compiled at the  
request of the Lobster  
Advisory Council***

***July 15, 2008***

# Summary

The questionnaire was sent to 6,832 license holders and 2,381 responded, a 35% return rate.

	<u>Increasing</u>	<u>Decreasing</u>	<u>Stable</u>	<u>No Opinion</u>
1	Based on your fishing experience do you feel the lobster resource is:			
	<b>5%</b>	<b>43%</b>	<b>49%</b>	<b>3%</b>
	<u>Very Much</u>	<u>Somewhat</u>	<u>Not Much</u>	<u>No Opinion</u>
2	How concerned are you that the cost associated with the amended Atlantic Large Whale Take Reduction Plan (ALWTRP) could impact how you fish?			
	<b>55%</b>	<b>23%</b>	<b>19%</b>	<b>3%</b>
3	Could the supply or price of herring for bait impact your decisions on how to fish?			
	<b>58%</b>	<b>32%</b>	<b>8%</b>	<b>1%</b>
	<u>Very</u>	<u>Somewhat</u>	<u>No Worries</u>	<u>No Opinion</u>
4	How worried are you about the number of traps fished in your area?			
	<b>43%</b>	<b>33%</b>	<b>21%</b>	<b>2%</b>
	<u>Yes</u>	<u>No</u>	<u>No Opinion</u>	
5	Would you support reducing the number of traps in the water in your area?			
	<b>56%</b>	<b>37%</b>	<b>7%</b>	
6	Do you favor reducing traps proportionally (every lobstermen removes the same percentage of their traps)?			
	<b>32%</b>	<b>58%</b>	<b>8%</b>	median -25%
7	Would you support an across the board lower trap limit?			
	<b>51%</b>	<b>43%</b>	<b>5%</b>	median 600
8	Do you favor freezing the number of tags for those holding commercial licenses?			
	<b>46%</b>	<b>43%</b>	<b>8%</b>	
9	Do you favor freezing entry of all new licenses into the fishery?			
	<b>50%</b>	<b>42%</b>	<b>6%</b>	
10	Do you support eliminating latent effort (tags/licenses not currently being used), before moving forward on trap reduction?			
	<b>45%</b>	<b>43%</b>	<b>11%</b>	

## Lobster Effort Questionnaire

The Lobster Advisory Council (LAC) is looking to get feedback from Maine's lobstermen on how to address difficult issues surrounding our industry. On March 19<sup>th</sup>, the LAC unanimously voted to poll Maine's lobstermen in order to get a sense of how you stand on the extremely sensitive subject of effort in your fishery. Please take time to respond and feel free to add comments on any or all of the questions. We suggest you read all questions first before answering.

1. Based on your fishing experience do you feel the lobster resource is:
  - a. Increasing
  - b. Decreasing
  - c. Stable
  - d. No opinion
2. How concerned are you that the cost associated with the amended Atlantic Large Whale Take Reduction Plan (ALWTRP) could impact how you fish?
  - a. Very much
  - b. Somewhat
  - c. Not much
  - d. No opinion
3. Could the supply or price of herring for bait impact your decisions on how to fish?
  - a. Very much
  - b. Somewhat
  - c. Not much
  - d. No opinion
4. How worried are you about the number of traps fished in your area?
  - a. Very
  - b. Somewhat
  - c. No worries
  - d. No opinion
5. Would you support reducing the number of traps in the water in your area?
  - a. Yes
  - b. No
  - c. No opinion
6. Do you favor reducing traps proportionally (every lobstermen removes the same percentage of their traps)?
  - a. Yes,      What percentage? \_\_\_\_\_
  - b. No
  - c. No opinion
7. Would you support an across the board lower trap limit?
  - a. Yes,      What limit? \_\_\_\_\_
  - b. No
  - c. No opinion
8. Do you favor freezing the number of tags for those holding commercial licenses?
  - a. Yes
  - b. No
  - c. No opinion
9. Do you favor freezing entry of all new licenses into the fishery?
  - a. Yes
  - b. No
  - c. No opinion
10. Do you support eliminating latent effort (tags/licenses not currently being used), before moving forward on trap reduction?
  - a. Yes
  - b. No
  - c. No opinion

Comments (you may add more on the reverse side if needed):

---

---

---

---

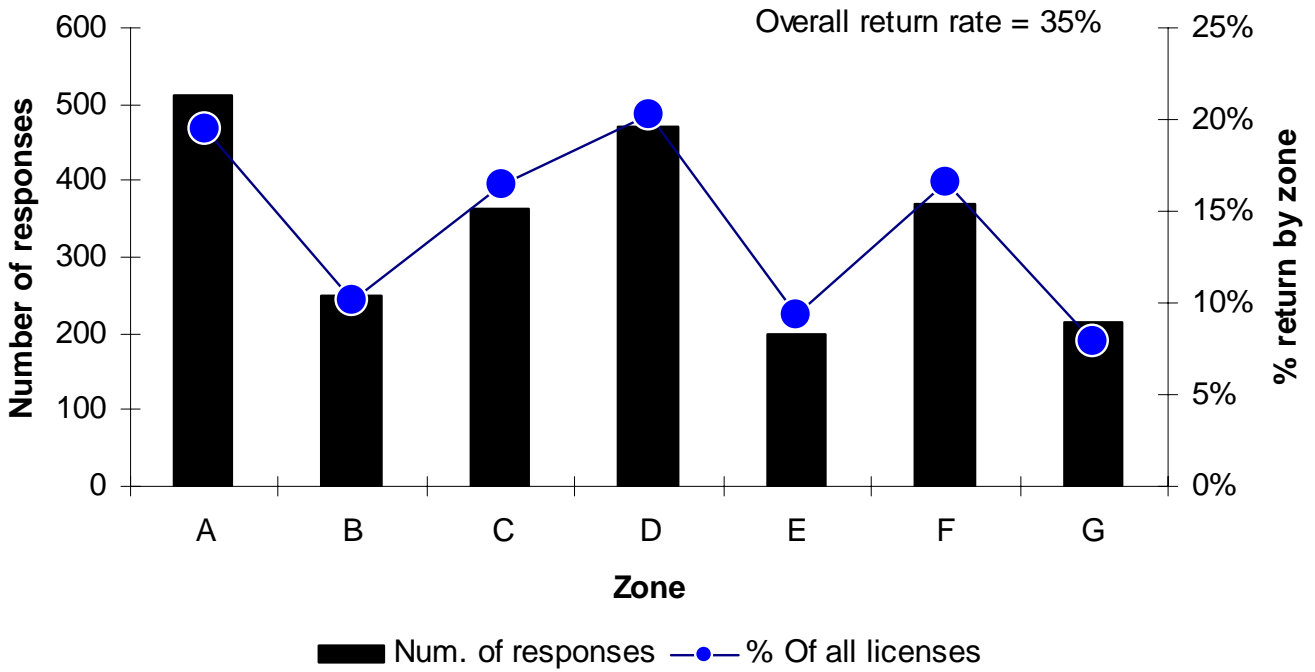
---

**\*\*\*Please Return by Friday, May 16, 2008\*\*\***

**LOBSTER and CRAB LICENSE NUMBER:**

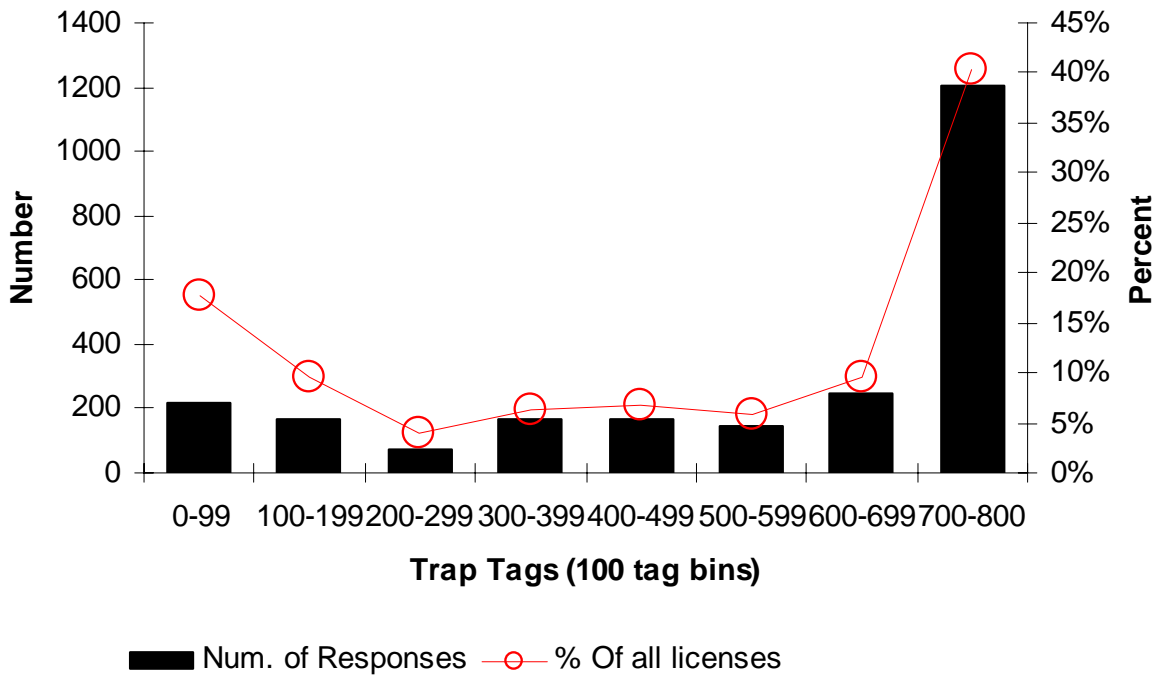
Your license number is needed to verify your eligibility and to ensure a representative number of fishermen are responding. Your license number will be cut off when it arrives at DMR for confidentiality and will not be associated with your results in the future.

# Who responded by Zone



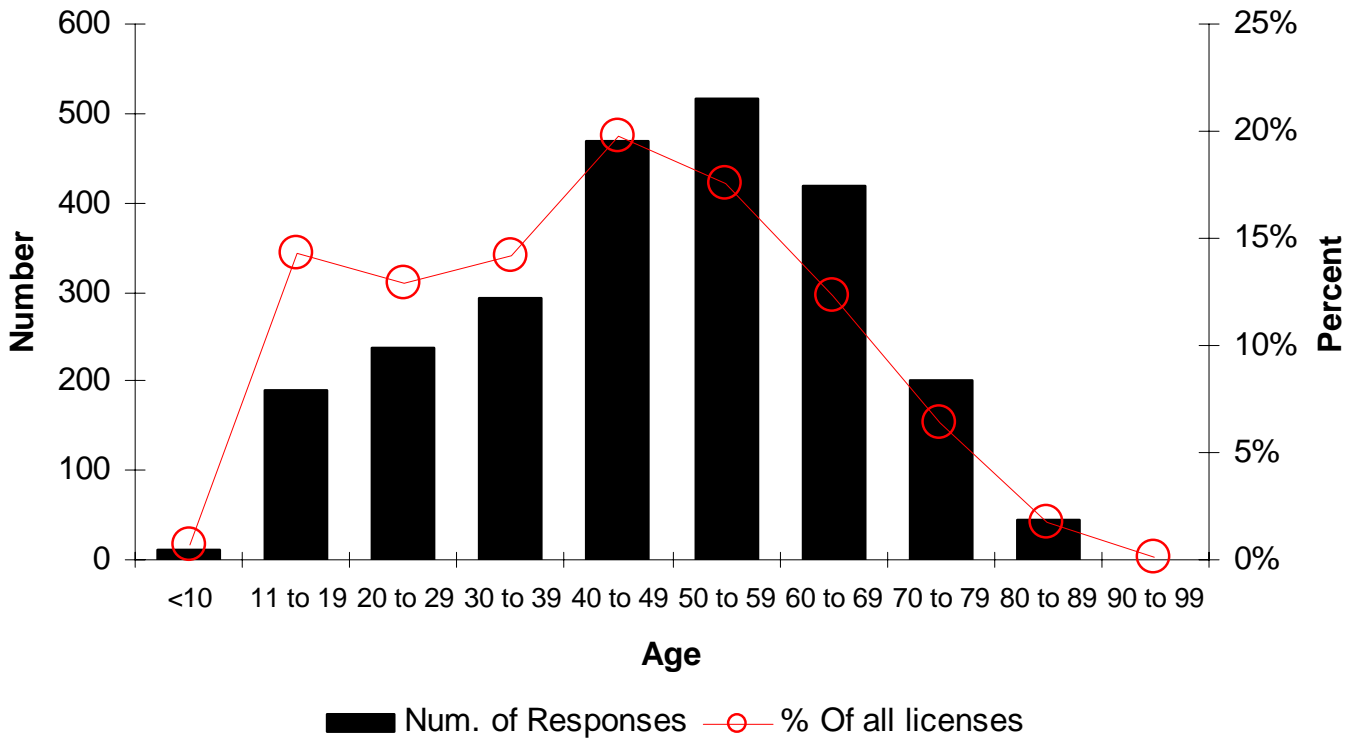
Zone	Num. of responses	Percent return	Licenses	% Of all licenses
A	512	38%	1334	20%
B	250	36%	689	10%
C	363	32%	1121	16%
D	470	34%	1383	20%
E	199	31%	638	9%
F	371	33%	1129	17%
G	216	40%	536	8%
Grand Total	2381	35%	6832	

# Who responded by tag number



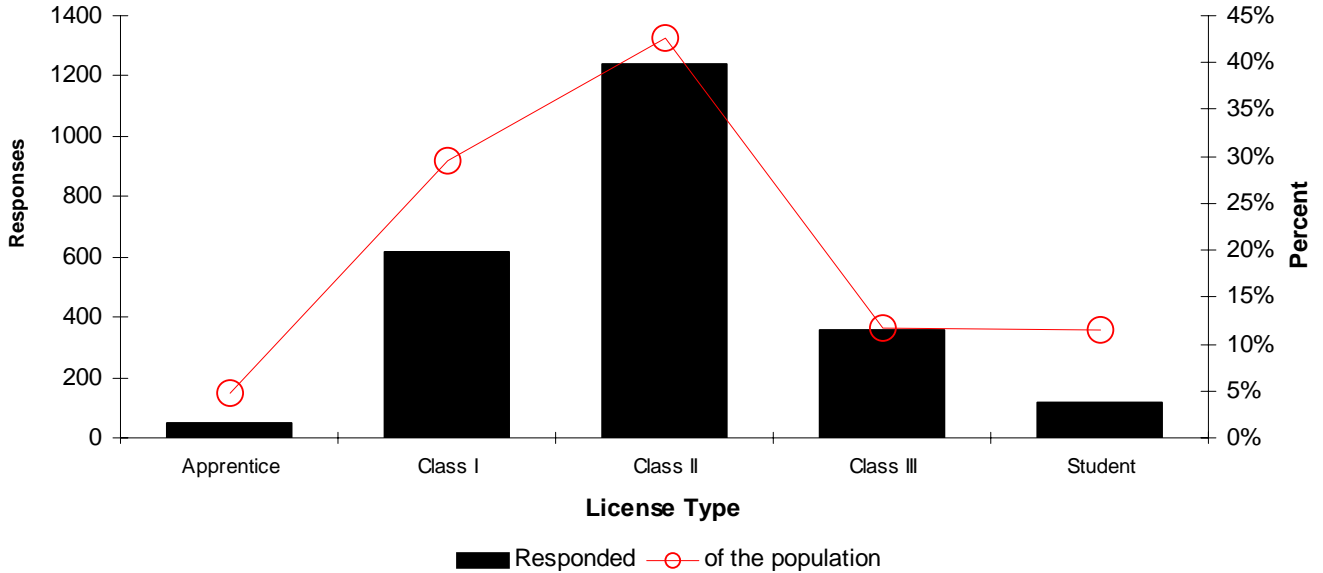
Tags	Num. of Responses	Percent Return	Licenses	% Of all licenses
0-99	214	18%	1204	18%
100-199	166	26%	649	9%
200-299	71	26%	270	4%
300-399	167	39%	429	6%
400-499	168	36%	467	7%
500-599	143	36%	400	6%
600-699	247	38%	655	10%
700-800	1205	44%	2758	40%
	2381	35%	6832	

# Who responded by age



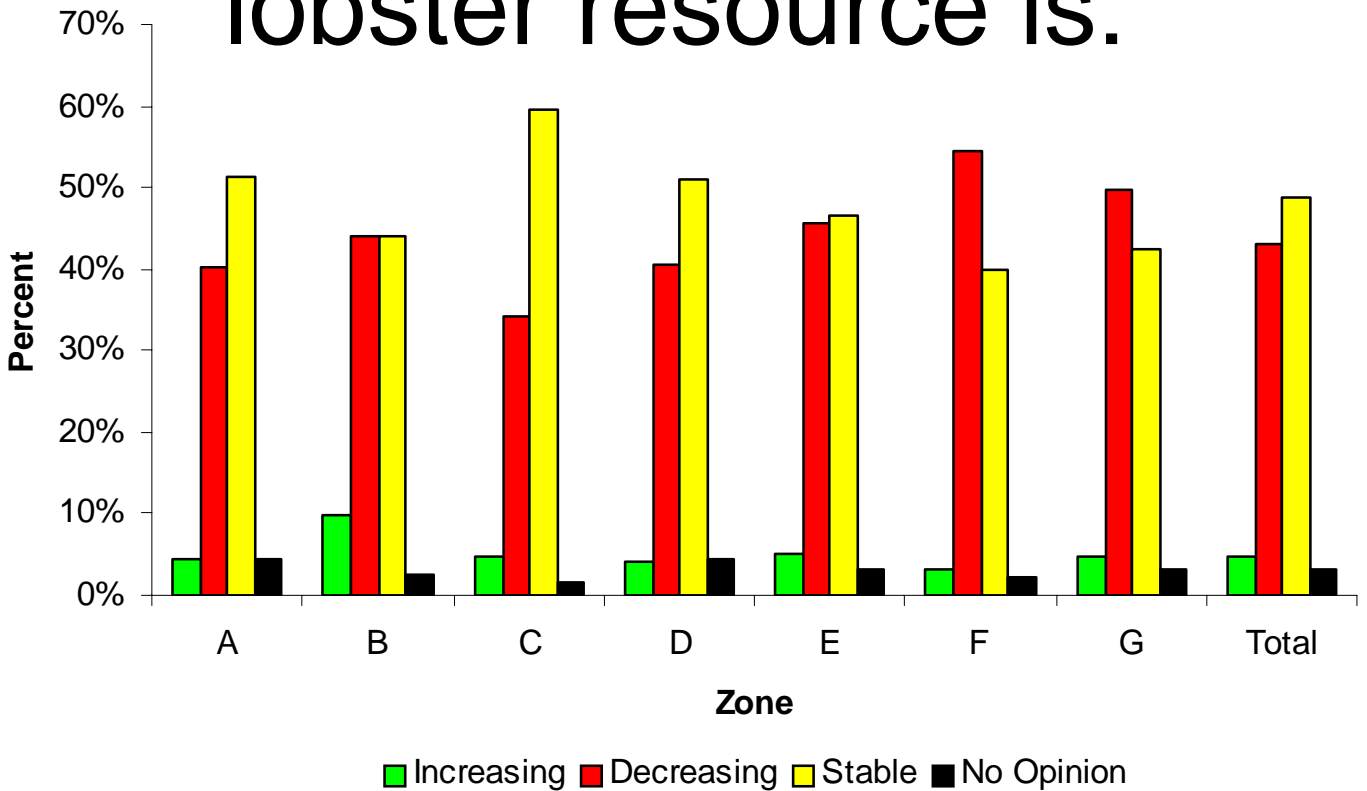
Age	Num. of responses	Percent return	Licenses	% Of all licenses
<10	11	24%	45	1%
11 to 19	190	19%	979	14%
20 to 29	236	27%	882	13%
30 to 39	294	30%	973	14%
40 to 49	469	35%	1347	20%
50 to 59	516	43%	1201	18%
60 to 69	418	49%	846	12%
70 to 79	201	46%	434	6%
80 to 89	45	38%	119	2%
90 to 99	1	17%	6	0%
	2381	35%	6832	

# License Type



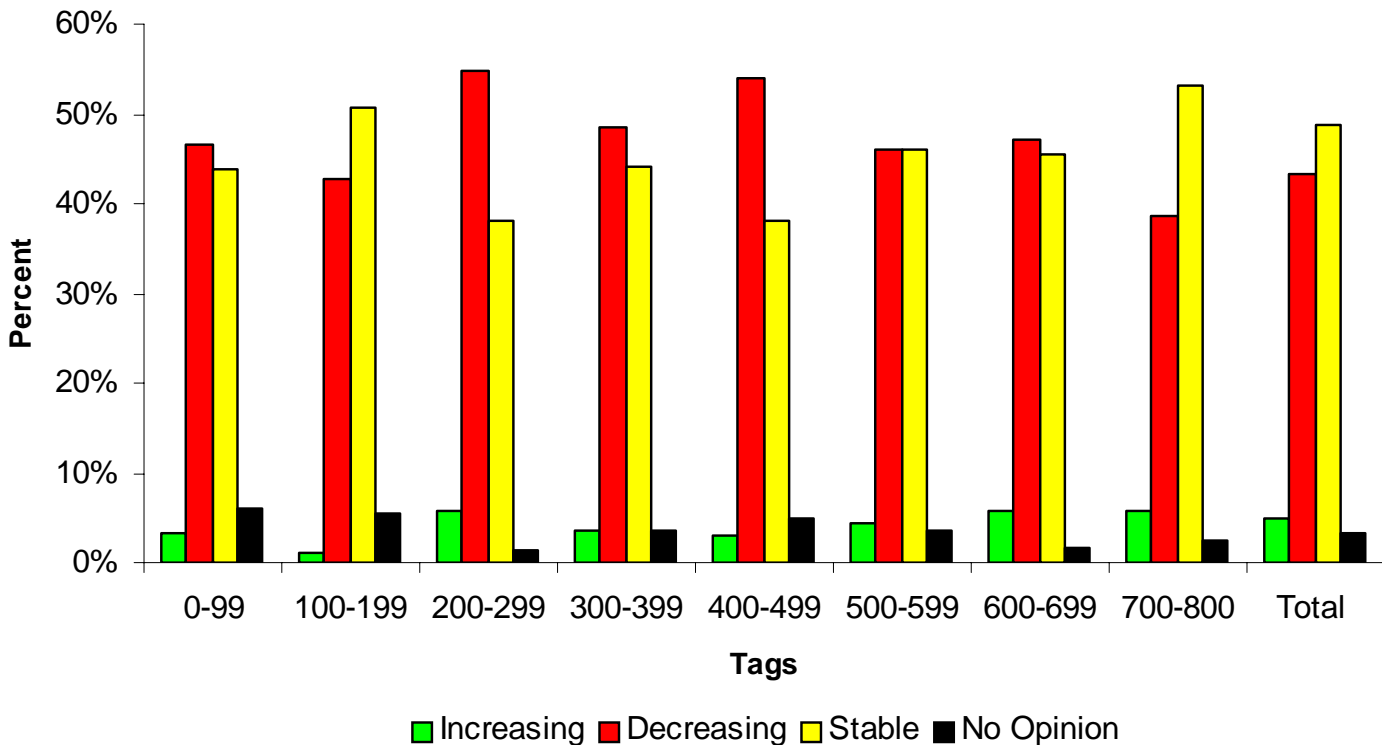
License Type	Number of Responses	Percent return	Licenses	% of all licenses
Apprentice	49	15%	323	5%
Class I	615	30%	2022	30%
Class II	1239	43%	2910	43%
Class III	359	45%	795	12%
Student	119	15%	782	11%
Grand Total	2381	35%	6832	

# 1. Based on your fishing experience do you feel the lobster resource is:



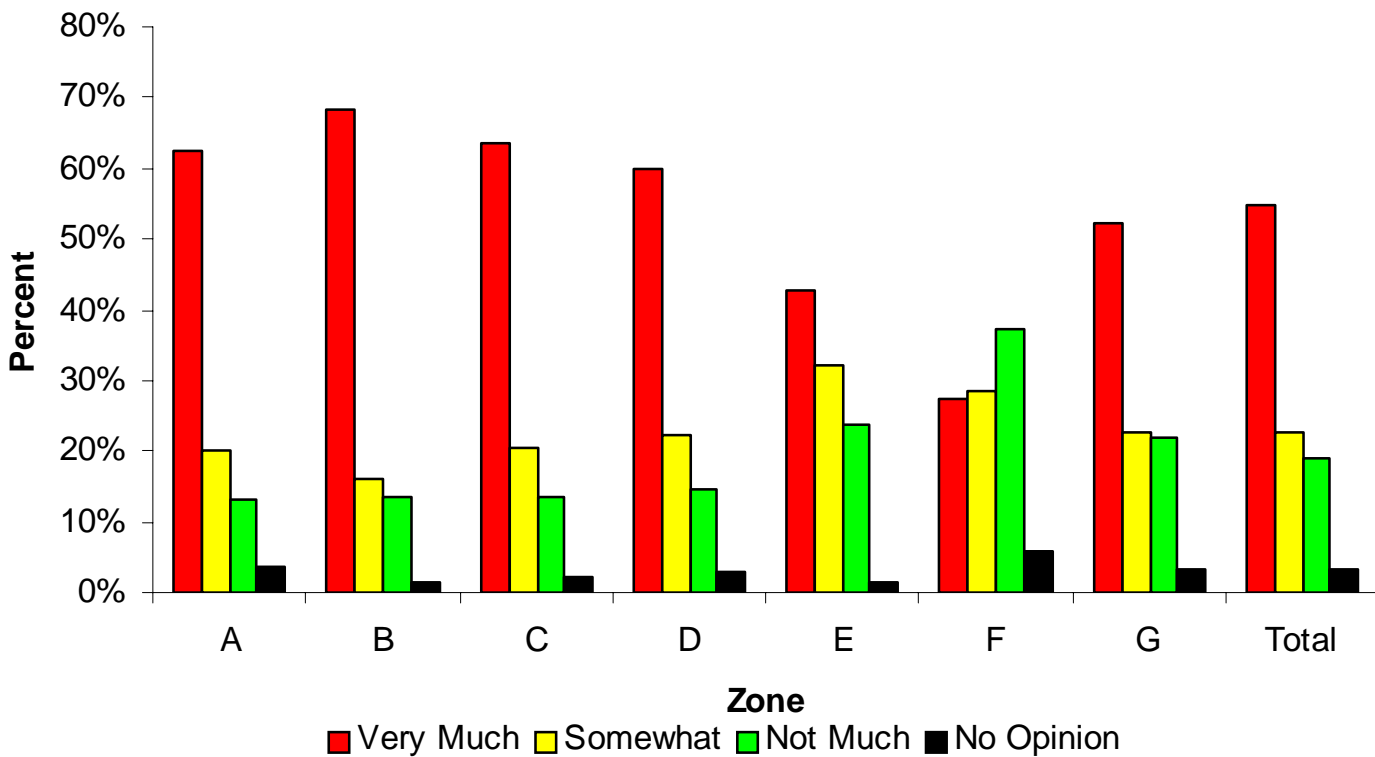
Zone	Increasing	Decreasing	Stable	No Opinion
A	4%	40%	51%	4%
B	10%	44%	44%	2%
C	5%	34%	59%	2%
D	4%	40%	51%	5%
E	5%	45%	46%	3%
F	3%	54%	40%	2%
G	5%	50%	42%	3%
<b>Total</b>	<b>5%</b>	<b>43%</b>	<b>49%</b>	<b>3%</b>

# 1. Based on your fishing experience do you feel the lobster resource is:



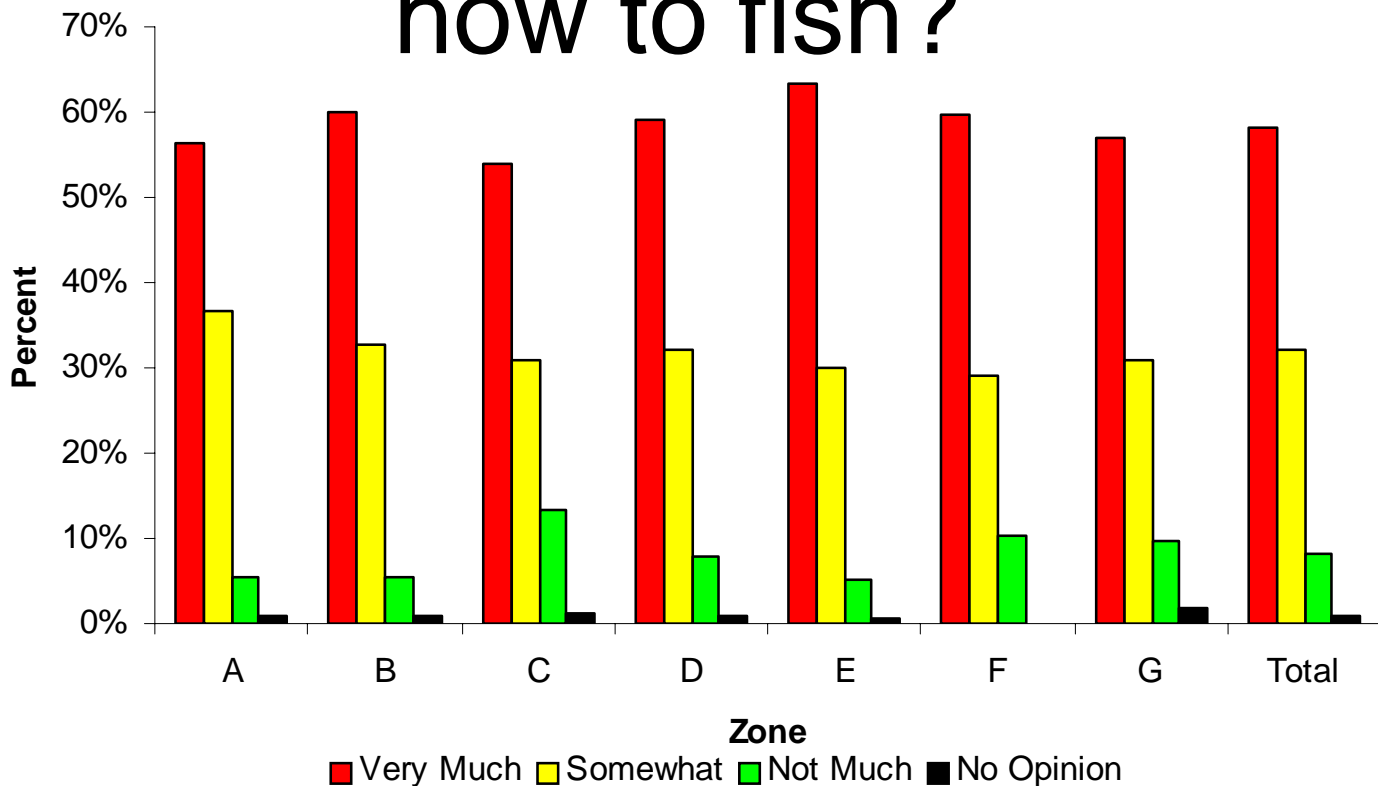
Tags	Increasing	Decreasing	Stable	No Opinion
0-99	3%	47%	44%	6%
100-199	1%	43%	51%	5%
200-299	6%	55%	38%	1%
300-399	4%	48%	44%	4%
400-499	3%	54%	38%	5%
500-599	4%	46%	46%	4%
600-699	6%	47%	45%	2%
700-800	6%	39%	53%	3%
<b>Total</b>	<b>5%</b>	<b>43%</b>	<b>49%</b>	<b>3%</b>

## 2. How concerned are you that the cost associated with the amended Atlantic Large Whale Take Reduction Plan (ALWTRP) could impact how you fish?



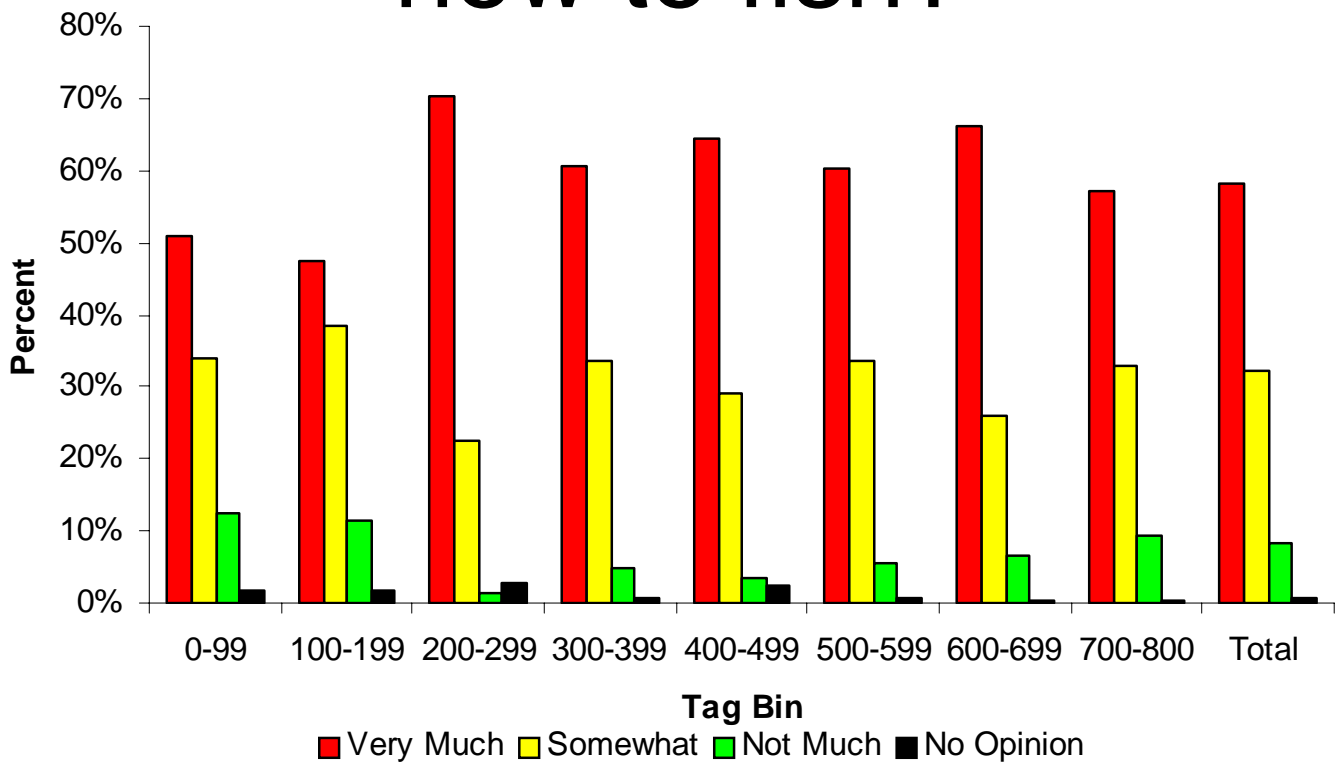
Zone	Very Much	Somewhat	Not Much	No Opinion
A	63%	20%	13%	4%
B	68%	16%	14%	2%
C	64%	20%	13%	2%
D	60%	22%	15%	3%
E	43%	32%	24%	2%
F	27%	29%	37%	6%
G	52%	23%	22%	3%
Total	55%	23%	19%	3%

# 3. Could the supply or price of herring for bait impact your decisions on how to fish?



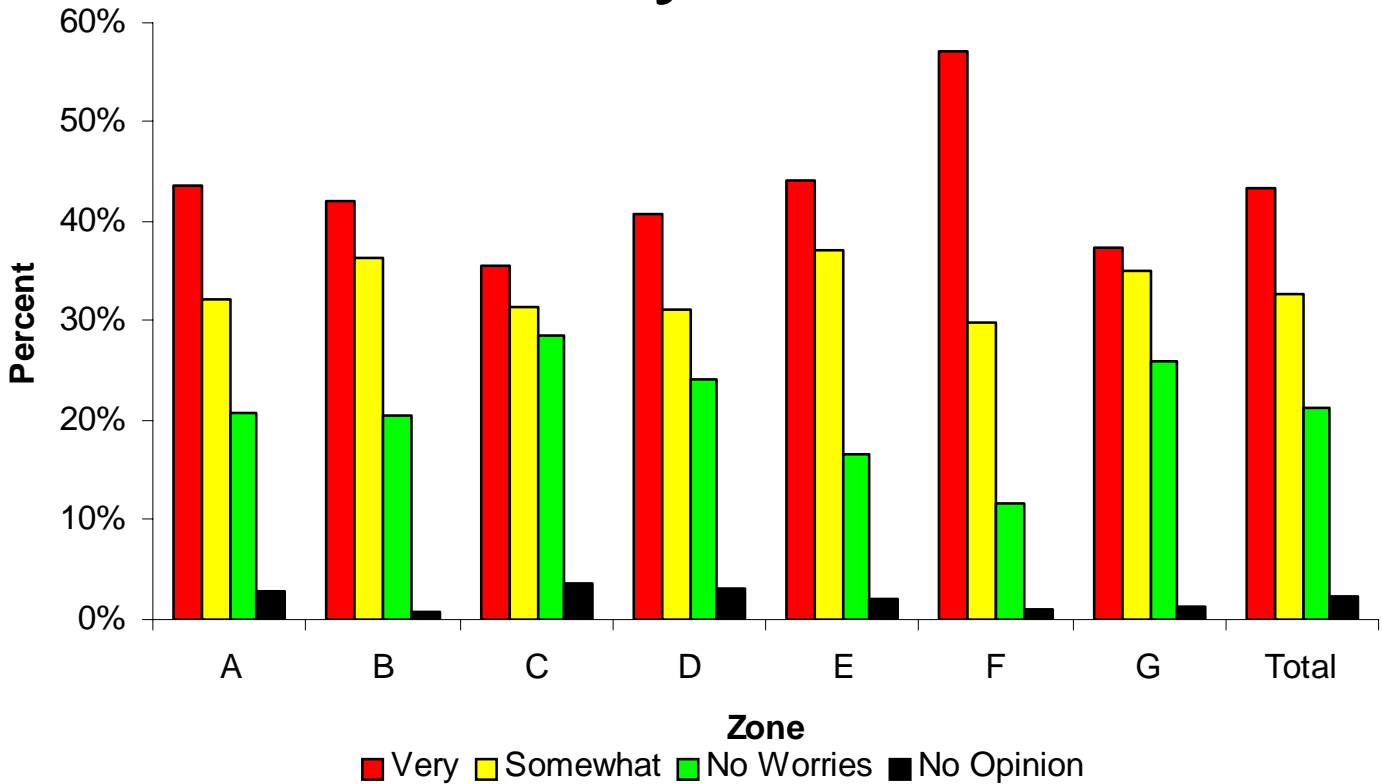
Zone	Very Much	Somewhat	Not Much	No Opinion	Responses
A	56%	37%	5%	1%	512
B	60%	33%	6%	1%	250
C	54%	31%	13%	1%	363
D	59%	32%	8%	1%	470
E	63%	30%	5%	1%	199
F	60%	29%	10%	0%	371
G	57%	31%	10%	2%	216
Total	58%	32%	8%	1%	2381

# 3. Could the supply or price of herring for bait impact your decisions on how to fish?



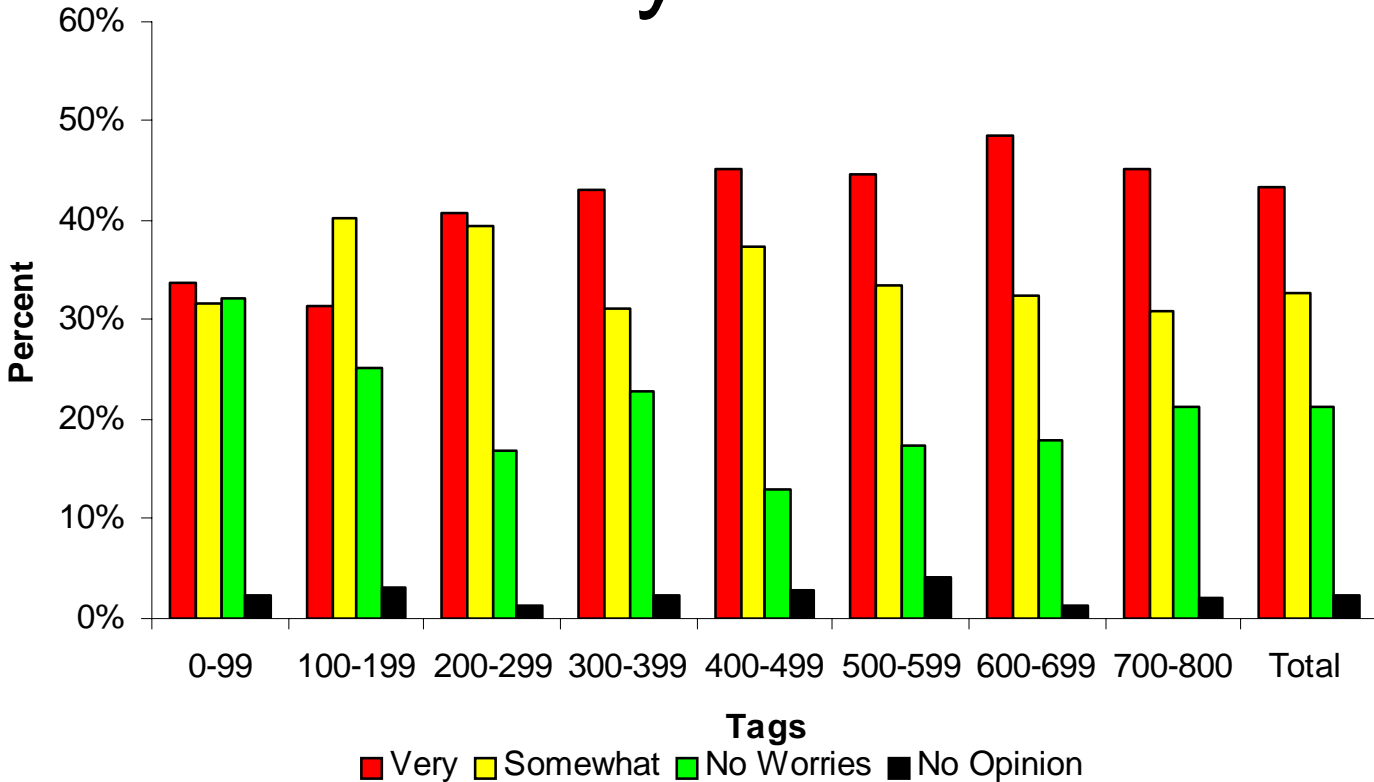
Tags	Very Much	Somewhat	Not Much	No Opinion	Responses
0-99	51%	34%	13%	2%	214
100-199	48%	39%	11%	2%	166
200-299	70%	23%	1%	3%	71
300-399	60%	34%	5%	1%	167
400-499	64%	29%	4%	2%	168
500-599	60%	34%	6%	1%	143
600-699	66%	26%	6%	0%	247
700-800	57%	33%	9%	0%	1205
Total	58%	32%	8%	1%	2381

# 4. How worried are you about the number of traps fished in your area?



Zone	Very	Somewhat	No Worries	No Opinion	Responses
A	44%	32%	21%	3%	512
B	42%	36%	20%	1%	250
C	36%	31%	29%	4%	363
D	41%	31%	24%	3%	470
E	44%	37%	17%	2%	199
F	57%	30%	12%	1%	371
G	38%	35%	26%	1%	216
Total	43%	33%	21%	2%	2381

# 4. How worried are you about the number of traps fished in your area?



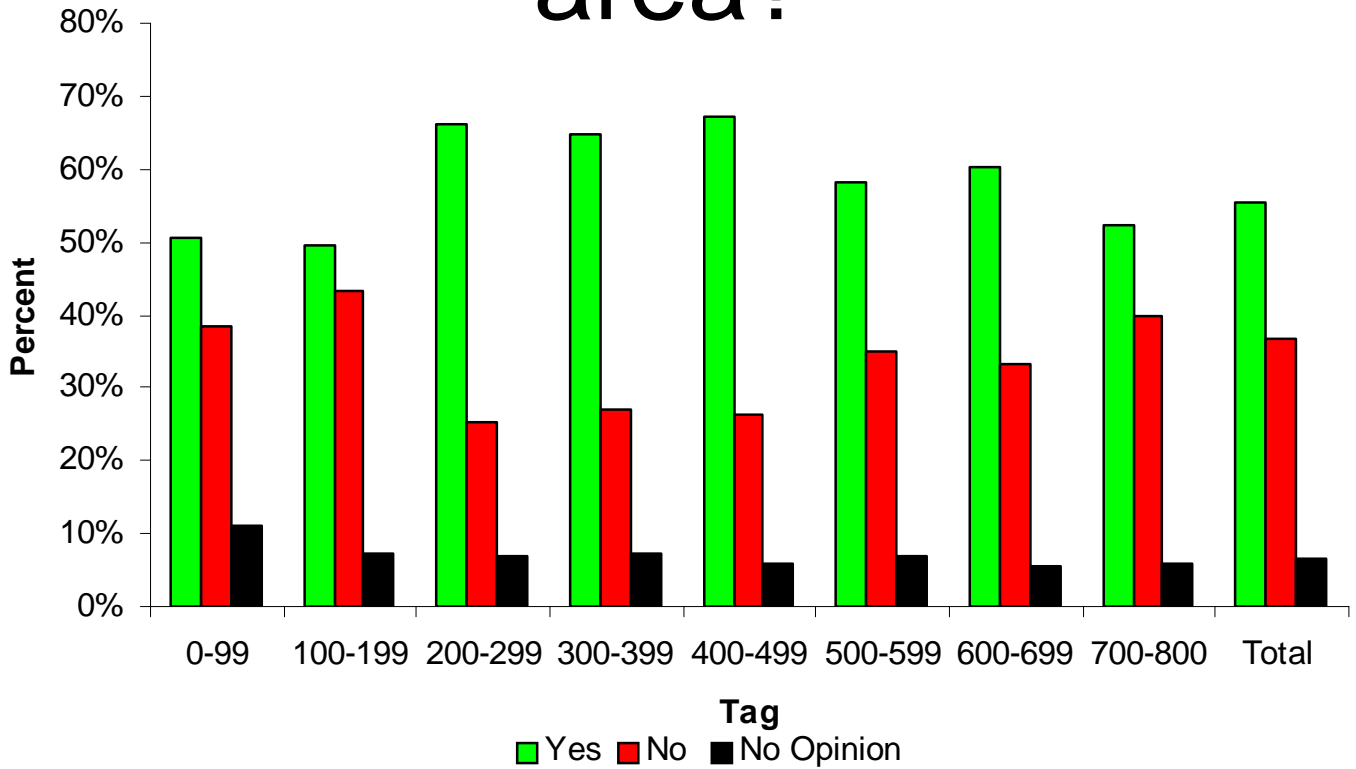
Tags	Very	Somewhat	No Worries	No Opinion	Responses
0-99	34%	32%	32%	2%	214
100-199	31%	40%	25%	3%	166
200-299	41%	39%	17%	1%	71
300-399	43%	31%	23%	2%	167
400-499	45%	38%	13%	3%	168
500-599	45%	34%	17%	4%	143
600-699	49%	32%	18%	1%	247
700-800	45%	31%	21%	2%	1205
Total	43%	33%	21%	2%	2381

# 5. Would you support reducing the number of traps in the water in your area?



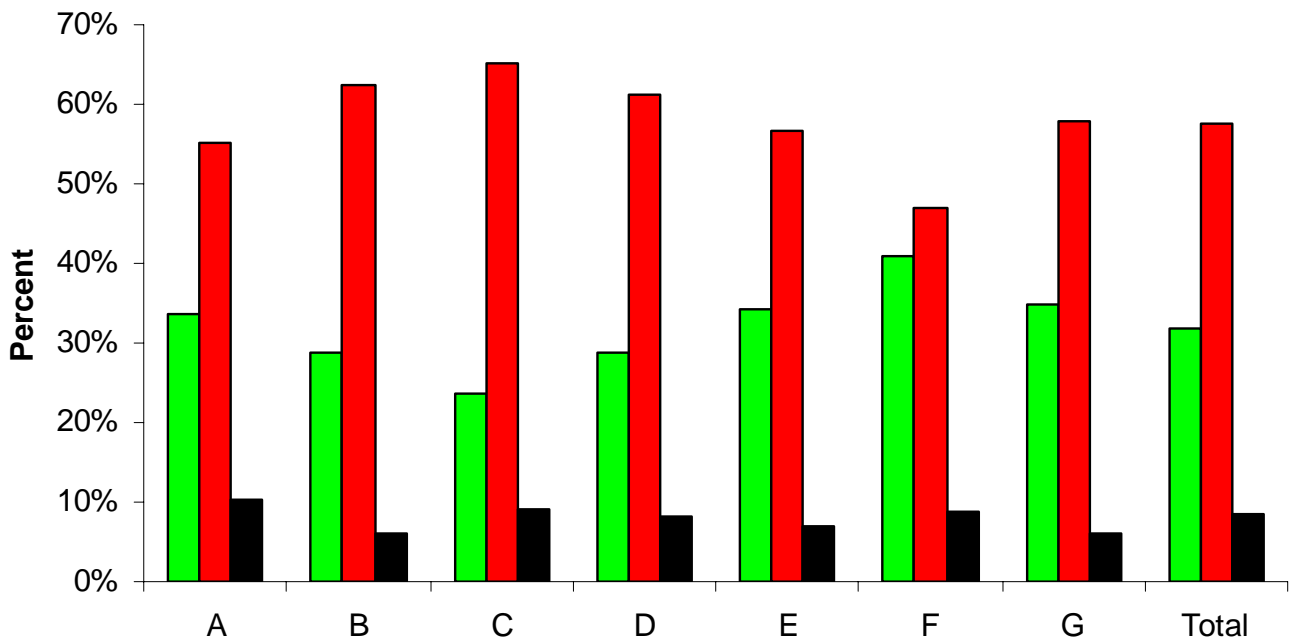
Zone	Yes	No	No Opinion	Responses
A	57%	35%	7%	512
B	57%	34%	8%	250
C	48%	43%	7%	363
D	50%	42%	7%	470
E	54%	40%	6%	199
F	68%	26%	5%	371
G	55%	38%	6%	216
Total	56%	37%	7%	2381

# 5. Would you support reducing the number of traps in the water in your area?



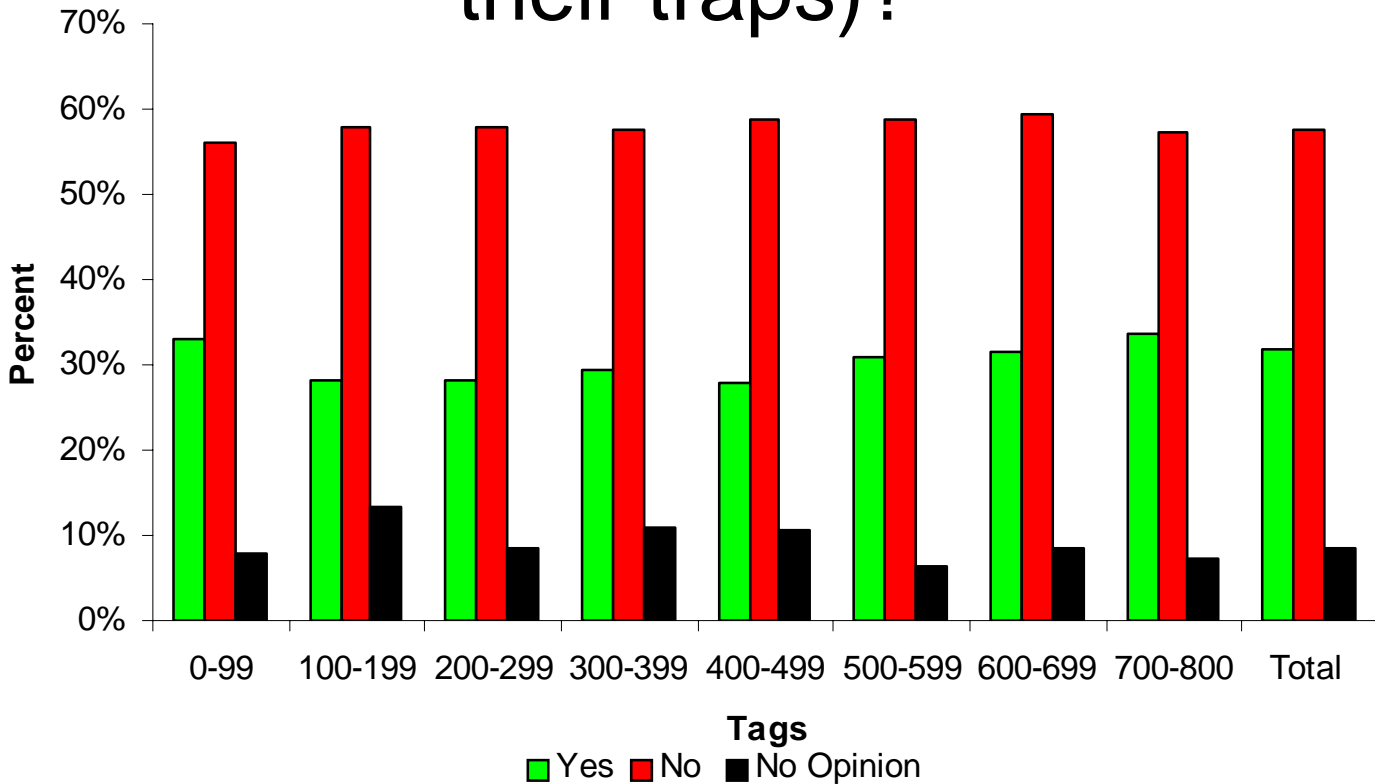
Tags	Yes	No	No Opinion	Responses
0-99	50%	38%	11%	214
100-199	49%	43%	7%	166
200-299	66%	25%	7%	71
300-399	65%	27%	7%	167
400-499	67%	26%	6%	168
500-599	58%	35%	7%	143
600-699	60%	33%	6%	247
700-800	52%	40%	6%	1205
Total	56%	37%	7%	2381

# 6. Do you favor reducing traps proportionally (every lobstermen removes the same percentage of their traps)?



Zone	Zone			Responses
	Yes	No	No Opinion	
A	34%	55%	10%	512
B	29%	62%	6%	250
C	24%	65%	9%	363
D	29%	61%	8%	470
E	34%	57%	7%	199
F	41%	47%	9%	371
G	35%	58%	6%	216
<b>Total</b>	<b>32%</b>	<b>58%</b>	<b>8%</b>	<b>2381</b>

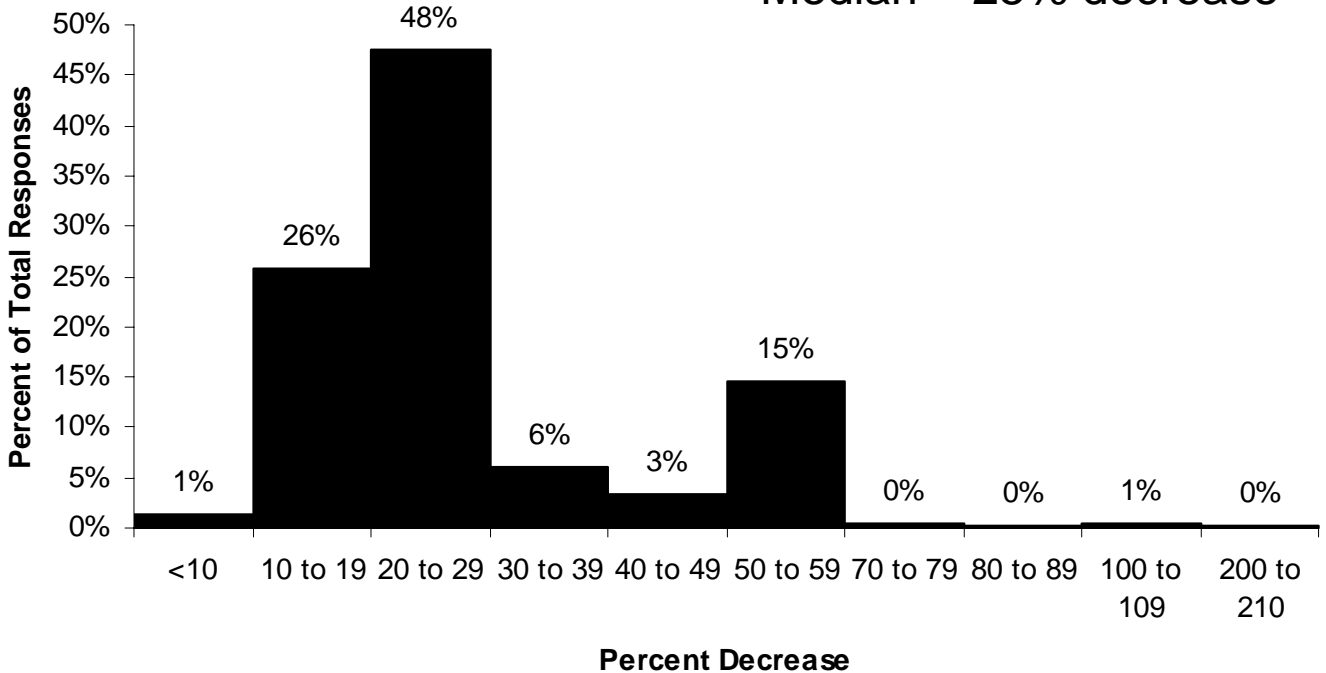
# 6. Do you favor reducing traps proportionally (every lobstermen removes the same percentage of their traps)?



Tags	Yes	No	No Opinion	Responses
0-99	33%	56%	8%	214
100-199	28%	58%	13%	166
200-299	28%	58%	8%	71
300-399	29%	57%	11%	167
400-499	28%	59%	11%	168
500-599	31%	59%	6%	143
600-699	32%	60%	9%	247
700-800	34%	57%	7%	1205
Total	32%	58%	8%	2381

# 6A. Do you favor reducing traps proportionally? **What percentage?**

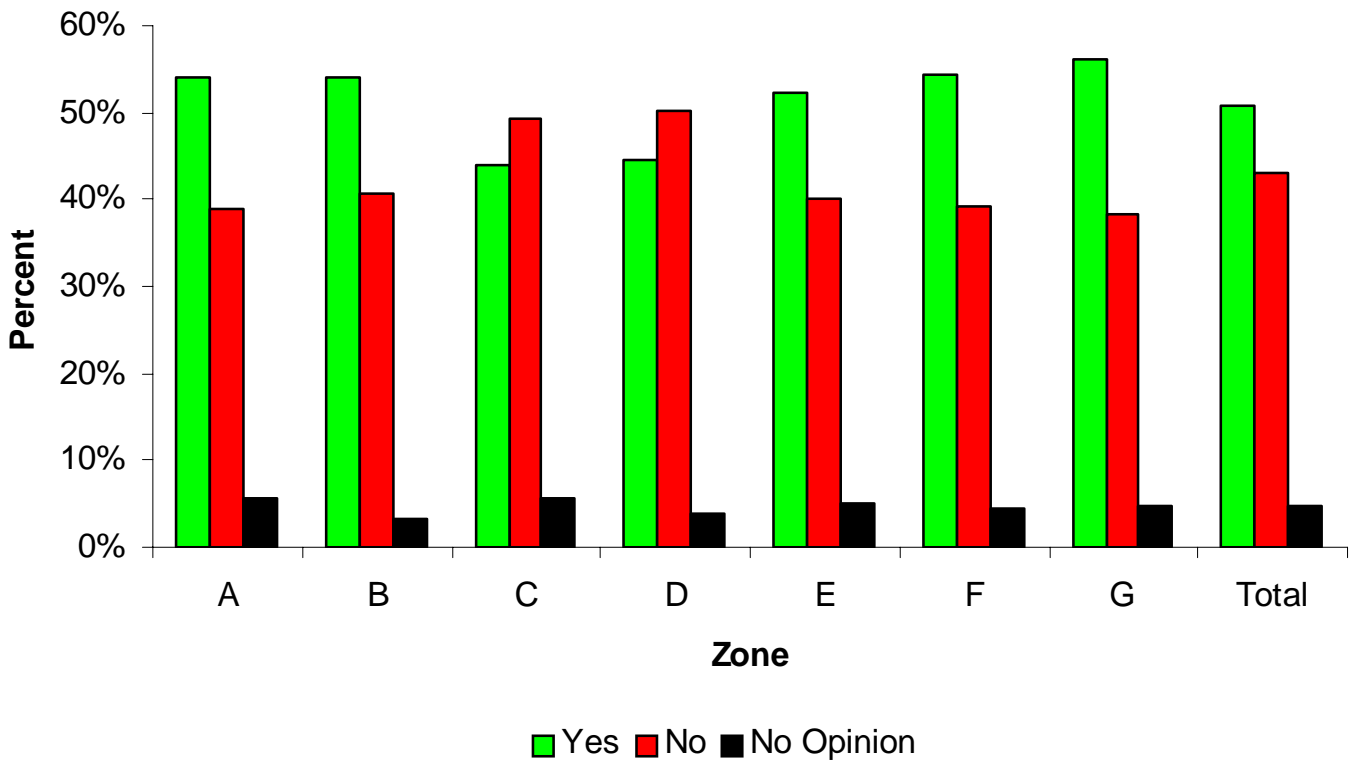
Median = 25% decrease



Zone	A	B	C	D	E	F	G	Total
Num. of Responses	122	61	55	112	49	118	53	570

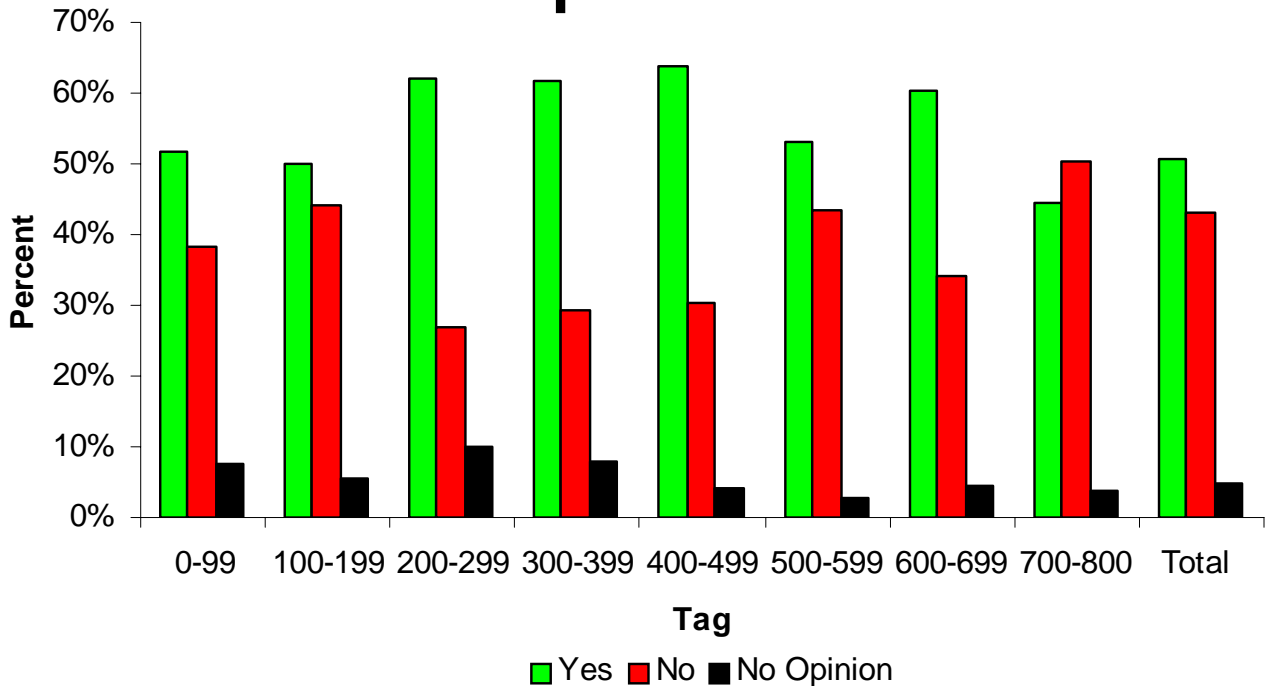
Percent Decrease	A	B	C	D	E	F	G	Total
<10	2%	2%	0%	2%	0%	2%	2%	1%
10 to 19	25%	21%	29%	23%	41%	31%	11%	26%
20 to 29	52%	64%	49%	51%	24%	42%	43%	48%
30 to 39	4%	5%	4%	4%	10%	10%	8%	6%
40 to 49	2%	0%	7%	3%	0%	2%	15%	3%
50 to 59	12%	8%	9%	18%	22%	14%	21%	15%
70 to 79	1%	0%	0%	0%	2%	0%	0%	0%
80 to 89	1%	0%	0%	0%	0%	0%	0%	0%
100 to 109	1%	0%	2%	0%	0%	1%	0%	1%
200 to 210	1%	0%	0%	0%	0%	0%	0%	0%

# 7. Would you support an across the board lower trap limit?



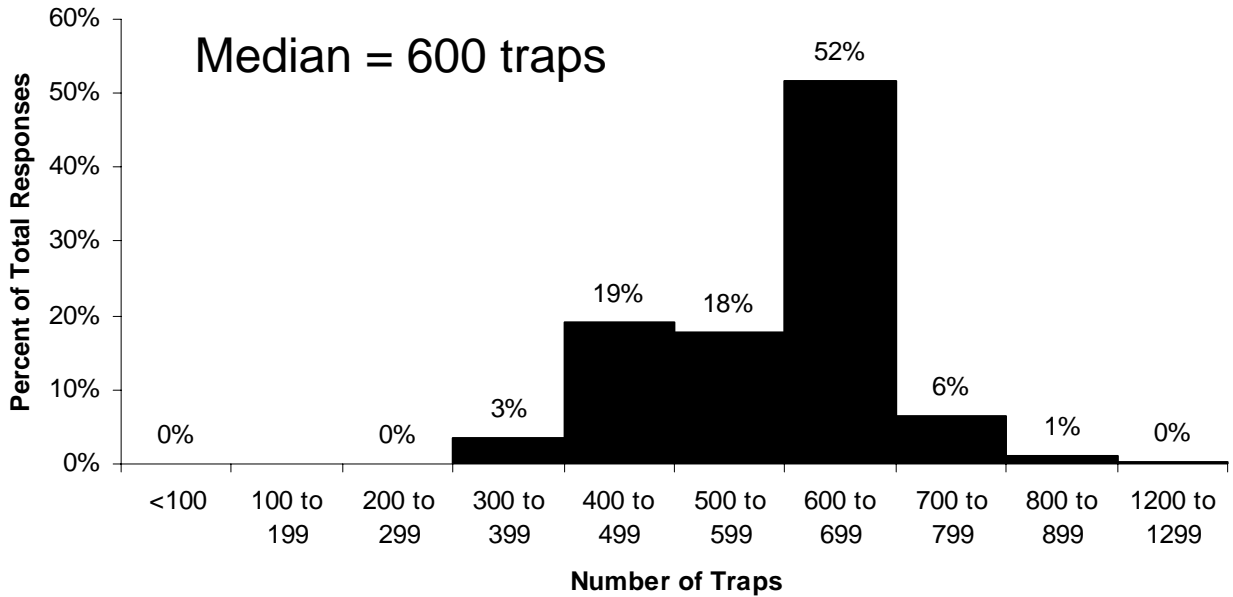
Zone	Yes	No	No Opinion	Responses
A	54%	39%	6%	512
B	54%	41%	3%	250
C	44%	49%	6%	363
D	44%	50%	4%	470
E	52%	40%	5%	199
F	54%	39%	5%	371
G	56%	38%	5%	216
Total	51%	43%	5%	2381

# 7. Would you support an across the board lower trap limit?



Tags	Yes	No	No Opinion	Responses
0-99	52%	38%	7%	214
100-199	50%	44%	5%	166
200-299	62%	27%	10%	71
300-399	62%	29%	8%	167
400-499	64%	30%	4%	168
500-599	53%	43%	3%	143
600-699	60%	34%	4%	247
700-800	44%	50%	4%	1205
<b>Total</b>	<b>51%</b>	<b>43%</b>	<b>5%</b>	<b>2381</b>

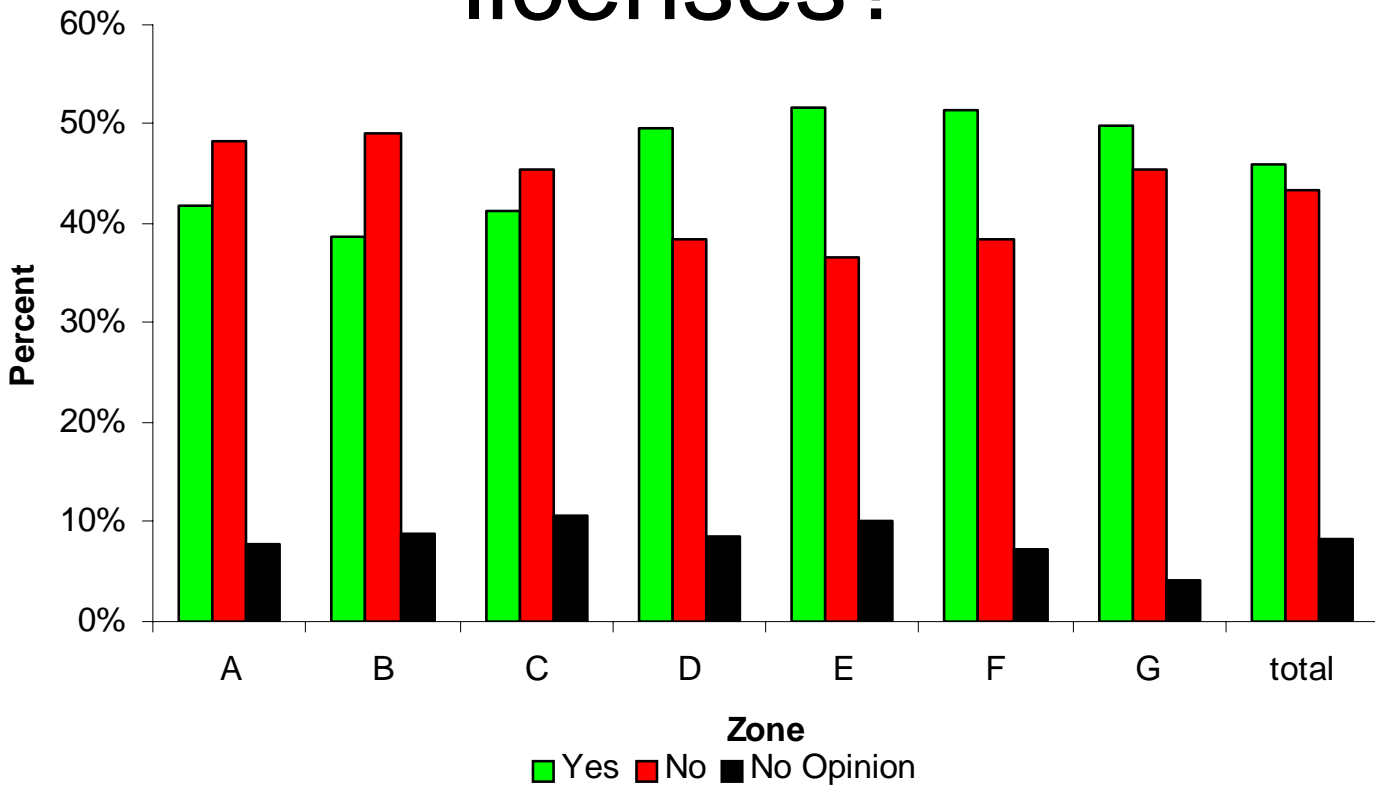
# 7A. Would you support an across the board lower trap limit? **What Limit?**



Zone	A	B	C	D	E	F	G	Total
Num. of Responses	257	118	147	187	84	169	105	1067

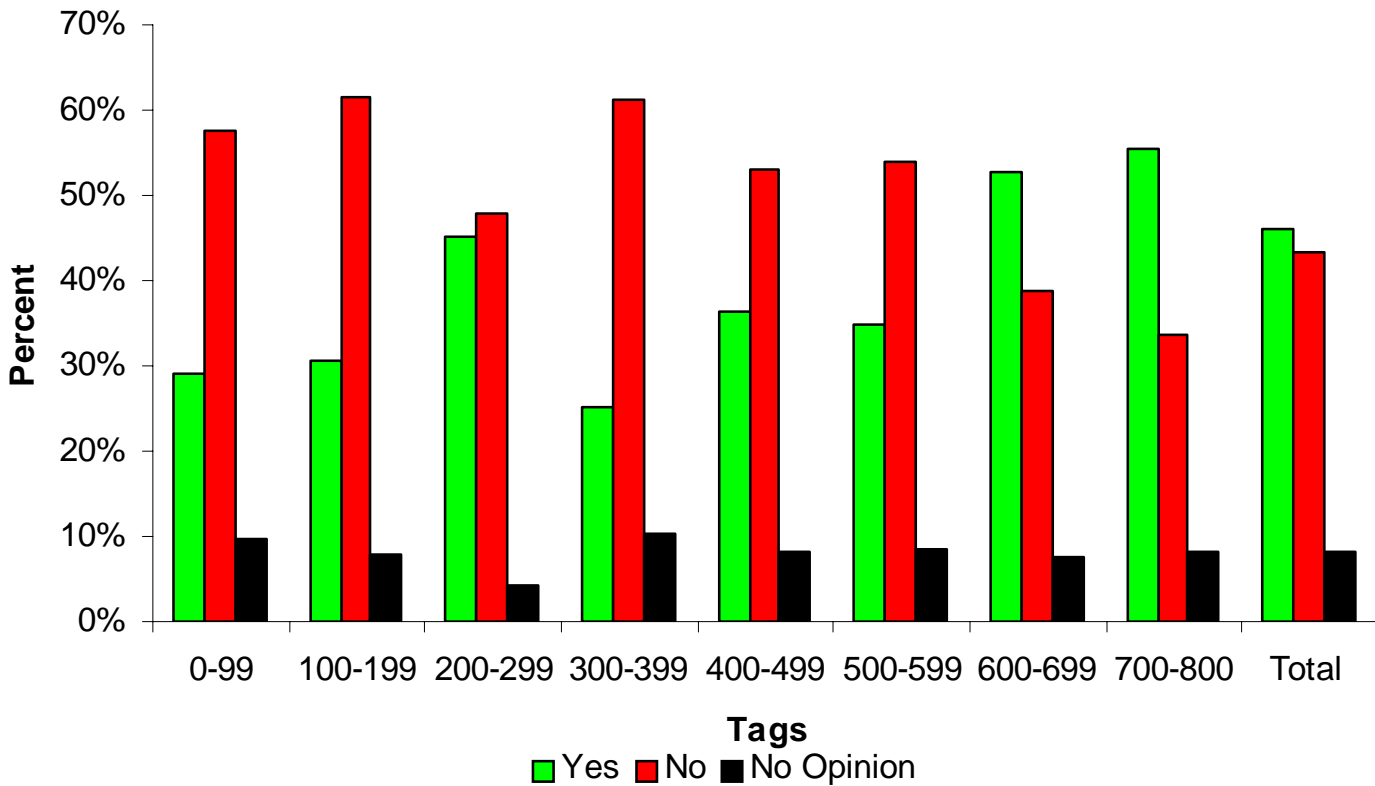
Traps	A	B	C	D	E	F	G	Total
<100	0%	0%	0%	0%	0%	1%	0%	0%
100 to 199	0%	0%	0%	0%	0%	0%	0%	0%
200 to 299	0%	1%	0%	0%	0%	0%	0%	0%
300 to 399	2%	2%	5%	2%	17%	2%	3%	3%
400 to 499	16%	17%	12%	14%	40%	22%	26%	19%
500 to 599	16%	18%	16%	17%	21%	16%	27%	18%
600 to 699	54%	57%	59%	59%	20%	51%	41%	52%
700 to 799	9%	6%	7%	5%	1%	8%	4%	6%
800 to 899	3%	0%	1%	2%	0%	0%	0%	1%
1200 to 1299	0%	0%	1%	0%	0%	0%	0%	0%

# 8. Do you favor freezing the number of tags for those holding commercial licenses?



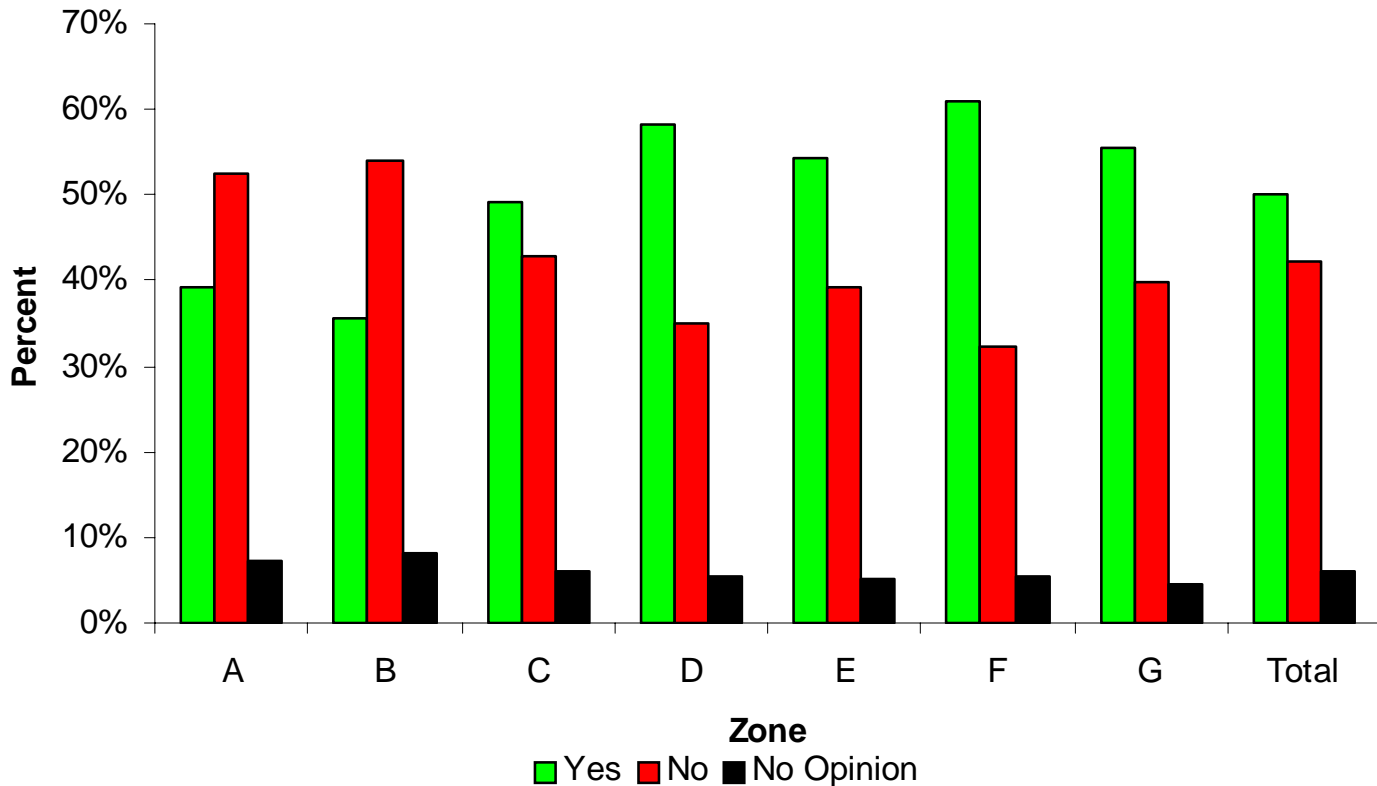
Zone	Yes	No	No Opinion	Responses
A	42%	48%	8%	512
B	39%	49%	9%	250
C	41%	45%	11%	363
D	50%	39%	9%	470
E	52%	37%	10%	199
F	51%	39%	7%	371
G	50%	45%	4%	216
Total	46%	43%	8%	2381

# 8. Do you favor freezing the number of tags for those holding commercial licenses?



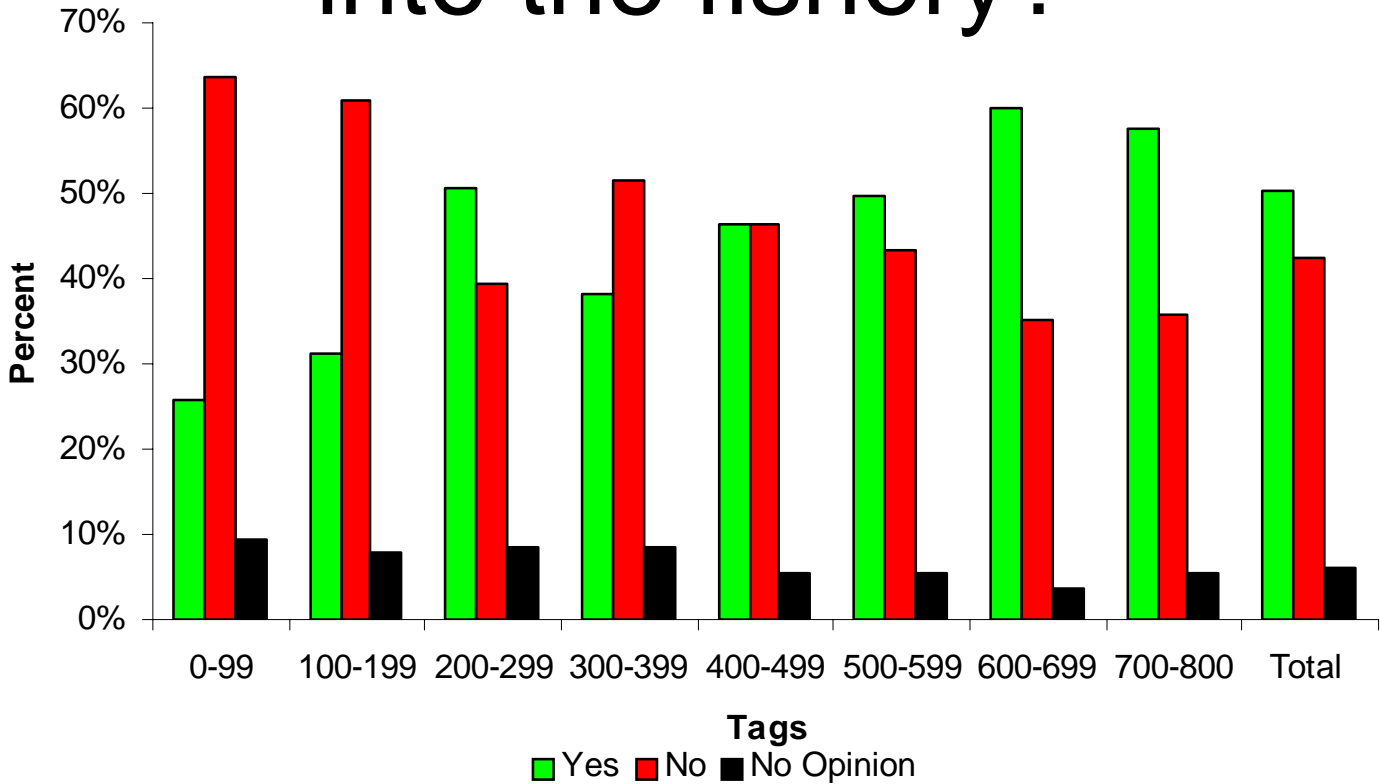
Tags	Yes	No	No Opinion	Responses
0-99	29%	57%	10%	214
100-199	31%	61%	8%	166
200-299	45%	48%	4%	71
300-399	25%	61%	10%	167
400-499	36%	53%	8%	168
500-599	35%	54%	8%	143
600-699	53%	39%	8%	247
700-800	55%	34%	8%	1205
<b>Total</b>	<b>46%</b>	<b>43%</b>	<b>8%</b>	<b>2381</b>

# 9. Do you favor freezing entry of all new licenses into the fishery?



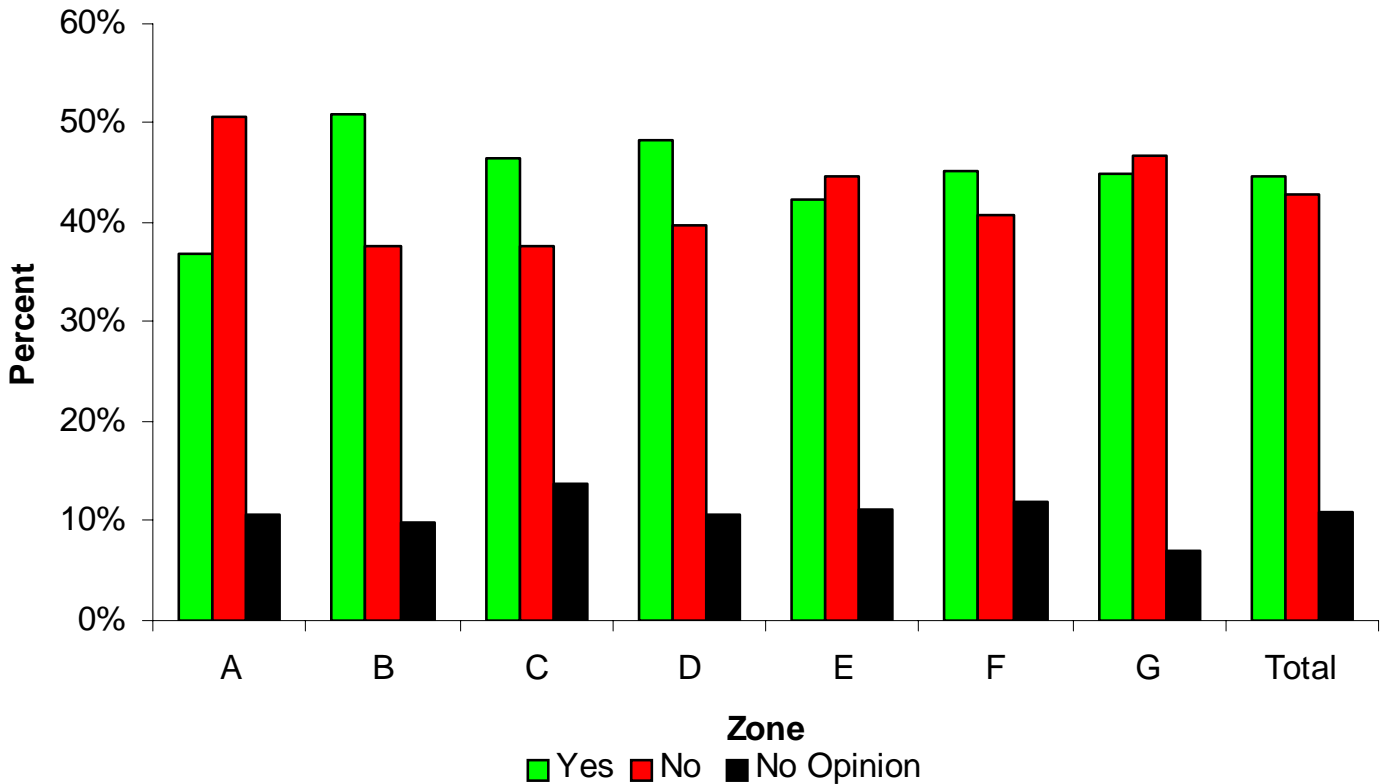
Zone	Yes	No	No Opinion	Responses
A	39%	53%	7%	512
B	36%	54%	8%	250
C	49%	43%	6%	363
D	58%	35%	6%	470
E	54%	39%	5%	199
F	61%	32%	5%	371
G	56%	40%	5%	216
Total	50%	42%	6%	2381

# 9. Do you favor freezing entry of all new licenses into the fishery?



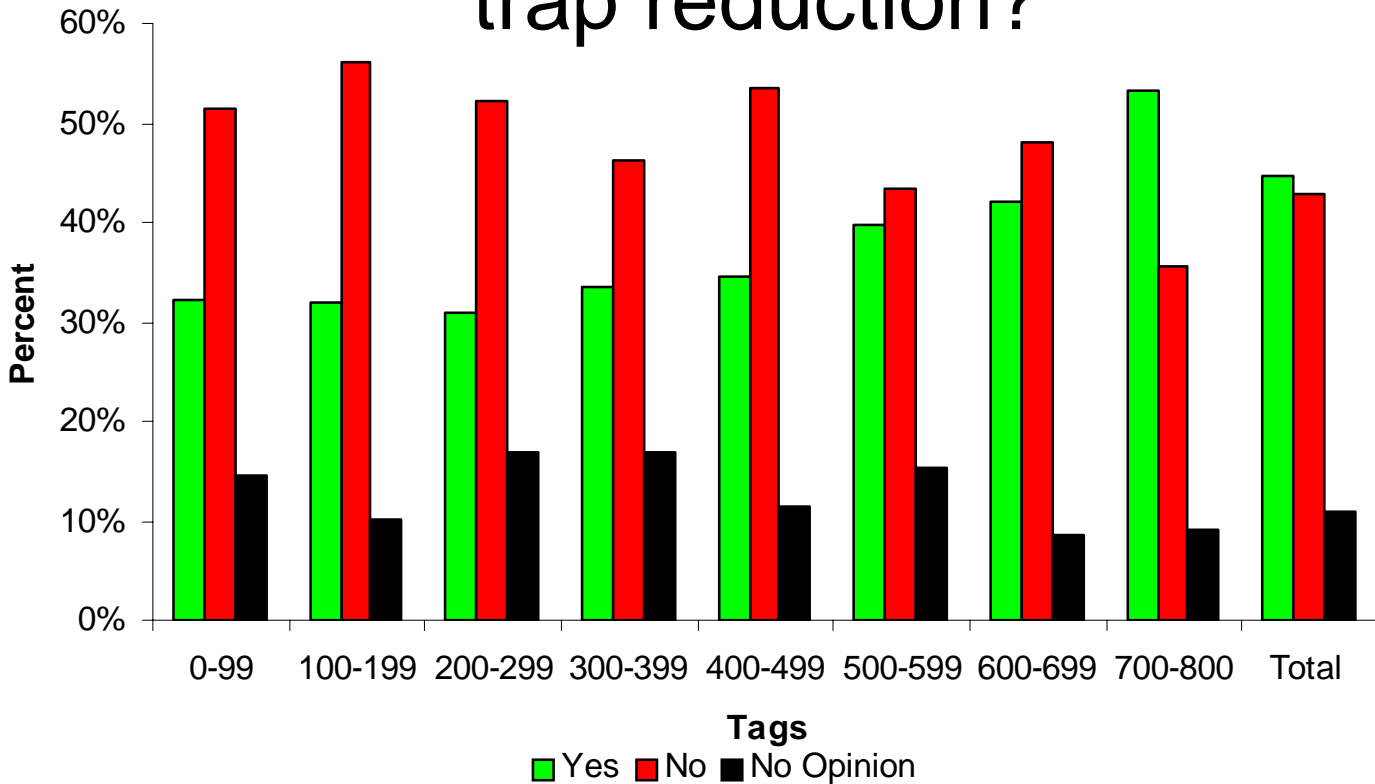
Tags	Yes	No	No Opinion	Responses
0-99	26%	64%	9%	214
100-199	31%	61%	8%	166
200-299	51%	39%	8%	71
300-399	38%	51%	8%	167
400-499	46%	46%	5%	168
500-599	50%	43%	6%	143
600-699	60%	35%	4%	247
700-800	57%	36%	5%	1205
Total	50%	42%	6%	2381

# 10. Do you support eliminating latent effort (tags/licenses not currently being used), before moving forward on trap reduction?



Zone	Yes	No	No Opinion	Responses
A	37%	51%	11%	512
B	51%	38%	10%	250
C	47%	38%	14%	363
D	48%	40%	11%	470
E	42%	45%	11%	199
F	45%	41%	12%	371
G	45%	47%	7%	216
Total	45%	43%	11%	2381

# 10. Do you support eliminating latent effort (tags/licenses not currently being used), before moving forward on trap reduction?



Tags	Yes	No	No Opinion	Responses
0-99	32%	51%	14%	214
100-199	32%	56%	10%	166
200-299	31%	52%	17%	71
300-399	34%	46%	17%	167
400-499	35%	54%	11%	168
500-599	40%	43%	15%	143
600-699	42%	48%	9%	247
700-800	53%	36%	9%	1205
Total	45%	43%	11%	2381

## Lobster Effort Questionnaire

The Lobster Advisory Council (LAC) is looking to get feedback from Maine's lobstermen on how to address difficult issues surrounding our industry. On March 19<sup>th</sup>, the LAC unanimously voted to poll Maine's lobstermen in order to get a sense of how you stand on the extremely sensitive subject of effort in your fishery. Please take time to respond and feel free to add comments on any or all of the questions. We suggest you read all questions first before answering.

1. Based on your fishing experience do you feel the lobster resource is:
  - a. Increasing
  - b. Decreasing
  - c. Stable
  - d. No opinion
2. How concerned are you that the cost associated with the amended Atlantic Large Whale Take Reduction Plan (ALWTRP) could impact how you fish?
  - a. Very much
  - b. Somewhat
  - c. Not much
  - d. No opinion
3. Could the supply or price of herring for bait impact your decisions on how to fish?
  - a. Very much
  - b. Somewhat
  - c. Not much
  - d. No opinion
4. How worried are you about the number of traps fished in your area?
  - a. Very
  - b. Somewhat
  - c. No worries
  - d. No opinion
5. Would you support reducing the number of traps in the water in your area?
  - a. Yes
  - b. No
  - c. No opinion
6. Do you favor reducing traps proportionally (every lobstermen removes the same percentage of their traps)?
  - a. Yes,      What percentage? \_\_\_\_\_
  - b. No
  - c. No opinion
7. Would you support an across the board lower trap limit?
  - a. Yes,      What limit? \_\_\_\_\_
  - b. No
  - c. No opinion
8. Do you favor freezing the number of tags for those holding commercial licenses?
  - a. Yes
  - b. No
  - c. No opinion
9. Do you favor freezing entry of all new licenses into the fishery?
  - a. Yes
  - b. No
  - c. No opinion
10. Do you support eliminating latent effort (tags/licenses not currently being used), before moving forward on trap reduction?
  - a. Yes
  - b. No
  - c. No opinion

Comments (you may add more on the reverse side if needed):

---

---

---

---

---

**\*\*\*Please Return by Friday, May 16, 2008\*\*\***

**LOBSTER and CRAB LICENSE NUMBER:**

Your license number is needed to verify your eligibility and to ensure a representative number of fishermen are responding. Your license number will be cut off when it arrives at DMR for confidentiality and will not be associated with your results in the future.

# Zone A

Zone A								
Count of Answers			Answers					
Zone	Question	District	Increasing	Decreasing	Stable	No Opinion	Grand Total	
A	1	1	2	46	39	1	88	
		2	2	31	15	4	52	
		3	2	30	33	3	68	
		4	4	31	35	5	75	
		5	1	18	27	1	47	
		6	3	12	27	1	43	
		7	3	13	29	2	47	
		8	3	13	31	1	48	
		(blank)	2	10	24	4	40	
	1 Total			22	204	260	22	508
				<b>Very Much</b>	<b>Somewhat</b>	<b>Not Much</b>	<b>No Opinion</b>	
	2	1	52	22	10	4	88	
		2	26	13	7	4	50	
		3	43	15	8	2	68	
		4	56	5	10	5	76	
		5	34	10	4	4	48	
		6	23	14	6	4	43	
		7	25	10	10	2	47	
		8	39	7	2	4	48	
		(blank)	22	7	10	1	40	
	2 Total			320	103	67	18	508
				<b>Very Much</b>	<b>Somewhat</b>	<b>Not Much</b>	<b>No Opinion</b>	
3	1	56	29	2	1	88		
	2	35	13	4	5	52		
	3	36	29	3	6	68		
	4	39	32	3	2	76		
	5	32	12	4	4	48		
	6	26	16	1	4	43		
	7	26	18	2	4	46		
	8	24	18	4	2	48		
	(blank)	15	20	5	4	40		
3 Total			289	187	28	5	509	
			<b>Very</b>	<b>Somewhat</b>	<b>No Worries</b>	<b>No Opinion</b>		
4	1	40	29	17	2	88		
	2	28	15	6	3	52		
	3	37	20	9	2	68		
	4	33	24	17	2	76		
	5	24	14	10	4	48		
	6	18	15	9	1	43		
	7	19	16	10	1	46		
	8	18	16	13	1	48		
	(blank)	7	15	16	2	40		
4 Total			224	164	107	14	509	
			<b>Very</b>	<b>Somewhat</b>	<b>No Worries</b>	<b>No Opinion</b>		
5	1	58	25	5	88			
	2	33	10	7	50			
	3	52	11	5	68			
	4	38	30	7	75			
	5	29	13	6	48			
	6	19	24	4	43			
	7	27	18	2	47			
	8	20	25	2	47			
	(blank)	15	21	4	40			
5 Total			291	177	38	506		

Zone A							
Count of Answers			Answers				
Zone	Question	District	Yes	No	No Opinion	Grand Total	
A	6	1	29	51	6	86	
		2	22	23	6	51	
		3	30	31	8	69	
		4	23	41	11	75	
		5	13	30	5	48	
		6	14	26	3	43	
		7	15	28	4	47	
		8	14	30	3	47	
		(blank)	11	22	7	40	
	6 Total			171	282	53	506
				<b>Yes</b>	<b>No</b>	<b>No Opinion</b>	
	7	1	51	30	7	88	
		2	37	11	3	51	
		3	48	14	6	68	
		4	35	35	4	74	
		5	30	14	4	48	
		6	15	25	1	41	
		7	23	22	2	47	
		8	19	27	1	47	
		(blank)	18	21	1	40	
	7 Total			276	199	29	504
				<b>Yes</b>	<b>No</b>	<b>No Opinion</b>	
8	1	34	44	8	86		
	2	33	17	1	51		
	3	33	24	11	68		
	4	18	50	7	75		
	5	25	20	2	47		
	6	20	21	1	42		
	7	22	18	5	45		
	8	21	23	4	48		
	(blank)	8	29	1	38		
8 Total			214	246	40	500	
			<b>Yes</b>	<b>No</b>	<b>No Opinion</b>		
9	1	32	50	5	87		
	2	33	16	2	51		
	3	30	30	8	68		
	4	19	46	10	75		
	5	20	25	3	48		
	6	17	23	2	42		
	7	22	22	3	47		
	8	21	24	3	48		
	(blank)	7	32	1	40		
9 Total			201	268	37	506	
			<b>Yes</b>	<b>No</b>	<b>No Opinion</b>		
10	1	30	46	11	87		
	2	20	23	9	52		
	3	21	41	6	68		
	4	21	41	11	73		
	5	17	25	6	48		
	6	18	18	5	41		
	7	17	26	2	45		
	8	27	17	4	48		
	(blank)	17	22	1	40		
	10 Total			188	259	55	502

# Zone B

Zone B								
Count of Answers			Answers					
Zone	Question	District	Increasing	Decreasing	Stable	No Opinion	Grand Total	
B	1	1	11	13	19	2	45	
		2	4	8	18	1	31	
		3	3	5	14	2	24	
		4	2	11	16	2	29	
		5	2	39	14	55		
		6	14	9	23			
		7	11	7	18			
	(blank)	2	7	11	1	21		
	1 Total			24	108	108	6	246
				Very Much	Somewhat	Not Much	No Opinion	
	2	1	34	4	9	1	48	
		2	21	6	4	31		
		3	16	5	1	23		
		4	20	5	3	29		
		5	37	13	5	55		
6		19	4	1	24			
7		15	1	2	18			
(blank)	9	2	9	1	21			
2 Total			171	40	34	4	249	
			Very Much	Somewhat	Not Much	No Opinion		
3	1	28	15	2	1	46		
	2	19	9	3	31			
	3	10	10	3	24			
	4	17	12	29				
	5	35	15	5	55			
	6	19	5	24				
	7	12	6	18				
(blank)	10	10	1	21				
3 Total			150	82	14	2	248	
			Very	Somewhat	No Worries	No Opinion		
4	1	20	21	6	47			
	2	9	13	9	31			
	3	6	10	7	24			
	4	10	13	5	29			
	5	41	12	2	55			
	6	11	7	6	24			
	7	3	9	6	18			
(blank)	5	6	10	21				
4 Total			105	91	51	2	249	
			Very	Somewhat	No Worries	No Opinion		
5	1	26	20	1	47			
	2	16	13	2	31			
	3	12	8	2	22			
	4	17	5	7	29			
	5	42	10	3	55			
	6	13	11	24				
	7	10	4	4	18			
(blank)	7	13	1	21				
5 Total			143	84	20	247		

Zone B							
Count of Answers			Answers				
Zone	Question	District	Yes	No	No Opinion	Grand Total	
	6	1	17	29	46		
		2	5	24	1	30	
		3	6	14	2	22	
		4	6	16	6	28	
		5	22	30	2	54	
		6	4	19	1	24	
		7	6	9	3	18	
	(blank)	6	15	21			
	6 Total			72	156	15	243
				Yes	No	No Opinion	
	7	1	22	25	1	48	
		2	13	17	30		
		3	10	11	1	22	
		4	14	10	4	28	
		5	37	16	1	54	
6		18	6	24			
7		10	7	1	18		
(blank)	11	10	21				
7 Total			135	102	8	245	
			Yes	No	No Opinion		
8	1	28	14	4	46		
	2	11	18	1	30		
	3	10	11	2	23		
	4	9	16	3	28		
	5	28	22	5	55		
	6	6	15	2	23		
	7	2	14	1	17		
(blank)	3	13	4	20			
8 Total			97	123	22	242	
			Yes	No	No Opinion		
9	1	17	23	6	46		
	2	11	18	1	30		
	3	8	14	2	24		
	4	8	18	1	27		
	5	35	16	4	55		
	6	5	18	1	24		
	7	4	11	2	17		
(blank)	1	17	3	21			
9 Total			89	135	20	244	
			Yes	No	No Opinion		
10	1	31	10	5	46		
	2	16	13	1	30		
	3	11	9	3	23		
	4	10	14	5	29		
	5	25	25	5	55		
	6	9	12	3	24		
	7	10	6	2	18		
(blank)	15	5	1	21			
10 Total			127	94	25	246	

# Zone C

Zone C							
Count of Answers			Answers				
Zone	Question	District	Increasing	Decreasing	Stable	No Opinion	Total
C	1	1	1	15	18	1	35
		2	1	6	13		20
		3	1	12	23		36
		4	5	16	26		47
		5		14	22		36
		6	1	10	12		23
		7	4	28	50	4	86
		8	1	10	4		15
		9	2	7	17		26
		(blank)	1	2	26		30
1 Total			17	120	211	6	354
			<b>Very Much</b>	<b>Somewhat</b>	<b>Not Much</b>	<b>No Opinion</b>	
	2	1	18	8	8	1	35
		2	8	7	4	1	20
		3	23	8	3	2	36
		4	33	9	6	1	49
		5	27	6	3	1	37
		6	6	7	10		23
		7	70	13	6	1	90
		8	7	4	4		15
		9	23	3			26
		(blank)	15	9	5	1	30
2 Total			230	74	49	8	361
			<b>Very Much</b>	<b>Somewhat</b>	<b>Not Much</b>	<b>No Opinion</b>	
	3	1	21	12	2		35
		2	13	6	1		20
		3	20	12	4		36
		4	28	14	6		48
		5	19	11	7		37
		6	15	6	2		23
		7	41	28	17	4	90
		8	12	2	1		15
		9	14	9	2		25
		(blank)	12	12	6		30
3 Total			195	112	48	4	359
			<b>Very</b>	<b>Somewhat</b>	<b>No Worries</b>	<b>No Opinion</b>	35
	4	1	16	16	3		20
		2	4	9	7		36
		3	11	14	9	2	49
		4	19	15	12	3	37
		5	6	10	20	1	23
		6	10	7	6		88
		7	32	30	21	5	15
		8	10	3	2		26
		9	10	6	9	1	30
		(blank)	10	4	15	1	359
4 Total			128	114	104	13	35
			<b>Yes</b>	<b>No</b>	<b>No Opinion</b>		
	5	1	21	10	4		20
		2	8	10	2		36
		3	21	12	3		48
		4	28	17	3		37
		5	13	21	3		22
		6	11	8	3		88
		7	42	40	6		15
		8	13	2			26
		9	10	15	1		30
		(blank)	9	20	1		357
5 Total			176	155	26	34	

Zone C						
Count of Answers			Answers			
Zone	Question	District	Yes	No	No Opinion	Total
C	6	1	12	20	2	34
		2	7	10	3	20
		3	8	26	2	36
		4	8	34	4	46
		5	7	26	5	38
		6	6	14	2	22
		7	22	54	12	88
		8	5	8	1	14
		9	9	16	1	26
		(blank)	1	28	1	30
6 Total			85	236	33	354
			<b>Yes</b>	<b>No</b>	<b>No Opinion</b>	35
	7	1	23	8	4	35
		2	11	8	1	20
		3	15	17	4	36
		4	25	21	2	48
		5	10	27	1	38
		6	10	11	1	22
		7	38	49	2	89
		8	12	1	2	15
		9	9	16	2	25
		(blank)	7	20	3	30
7 Total			160	178	20	358
			<b>Yes</b>	<b>No</b>	<b>No Opinion</b>	35
	8	1	12	20	3	35
		2	7	13		20
		3	9	24	3	36
		4	19	24	5	48
		5	18	17	1	36
		6	9	7	6	22
		7	43	31	13	87
		8	6	5	4	15
		9	16	6	2	24
		(blank)	10	18	2	30
8 Total			149	165	39	353
			<b>Yes</b>	<b>No</b>	<b>No Opinion</b>	34
	9	1	21	9	4	34
		2	2	17	1	20
		3	15	20	1	36
		4	24	21	3	48
		5	17	17	2	36
		6	14	8		22
		7	57	26	6	89
		8	6	7	2	15
		9	13	11	2	26
		(blank)	9	20	1	30
9 Total			178	156	22	356
			<b>Yes</b>	<b>No</b>	<b>No Opinion</b>	
	10	1	14	17	4	35
		2	8	10	2	20
		3	13	15	8	36
		4	20	21	6	47
		5	18	15	4	37
		6	13	8	2	23
		7	45	28	15	88
		8	5	7	3	15
		9	18	6		24
		(blank)	15	10	5	30
10 Total			169	137	49	355

# Zone D

Zone D							
Count of Answers			Answers				
Zone	Question	District	Increasing	Decreasing	Stable	No Opinion	Total
D	1	1	1	12	22	1	36
		2	1	11	19	3	34
		3	3	31	34	1	69
		4	1	9	20	1	31
		5	2	20	16	2	40
		6	5	17	23	2	47
		7	3	24	23	2	52
		8		18	14	3	35
		9		9	12	1	22
		10	2	8	13	2	25
		11		19	17	2	38
		12		2	4		6
		(blank)	1	8	18	1	28
1 Total			19	188	235	21	463
			<b>Very Much</b>	<b>Somewhat</b>	<b>Not Much</b>	<b>No Opinion</b>	
D	2	1	26	6	4		36
		2	13	12	9		34
		3	44	14	10	1	69
		4	22	5	4		31
		5	20	19	3		42
		6	42	4	2		48
		7	35	10	5	1	51
		8	21	7	6	1	35
		9	8	6	7	2	23
		10	13	7	3	2	25
		11	15	10	9	4	38
		12	7				7
		(blank)	15	3	7	3	28
2 Total			281	103	69	14	467
			<b>Very Much</b>	<b>Somewhat</b>	<b>No Worries</b>	<b>No Opinion</b>	
D	3	1	27	5	4		36
		2	22	9	3		34
		3	43	17	8	1	69
		4	15	13	3		31
		5	22	17	3		42
		6	27	19	2		48
		7	28	16	7	1	52
		8	23	10	1	1	35
		9	13	10			23
		10	14	9	2		25
		11	28	10			38
		12	7				7
		(blank)	8	15	4	1	28
3 Total			277	150	37	4	468
			<b>Very</b>	<b>Somewhat</b>	<b>No Worries</b>	<b>No Opinion</b>	
D	4	1	17	10	9		36
		2	18	8	7	1	34
		3	32	24	10	3	69
		4	9	11	10	1	31
		5	27	11	3	1	42
		6	21	18	7	2	48
		7	23	11	16	1	51
		8	15	8	9	3	35
		9	5	11	6	1	23
		10	9	8	8		25
		11	9	16	11	2	38
		12	4		2		6
		(blank)	3	11	14		28
4 Total			192	147	112	15	466
			<b>Yes</b>	<b>No</b>	<b>No Opinion</b>		
D	5	1	26	8	2		36
		2	24	8	2		34
		3	33	34	1		68
		4	14	14	3		31
		5	28	10	3		41
		6	20	25	2		47
		7	19	30	3		52
		8	14	15	5		34
		9	10	11	2		23
		10	13	11	1		25
		11	22	12	4		38
		12	5	1	1		7
		(blank)	7	17	4		28
5 Total			235	196	33		464

Zone D						
Count of Answers			Answers			
Zone	Question	District	Yes	No	No Opinion	Total
D	6	1	14	22		36
		2	12	16	5	33
		3	19	46	2	67
		4	7	19	5	31
		5	13	24	5	42
		6	11	32	5	48
		7	17	32	2	51
		8	6	25	3	34
		9	6	13	4	23
		10	11	12	1	24
		11	10	22	4	36
		12	6		1	7
		(blank)	3	23	2	28
6 Total			135	286	39	460
			<b>Yes</b>	<b>No</b>	<b>No Opinion</b>	
D	7	1	21	14	1	36
		2	25	9		34
		3	32	37		69
		4	8	21	2	31
		5	26	13	2	41
		6	11	33	3	47
		7	16	33	1	50
		8	11	20	2	33
		9	11	12		23
		10	14	10	1	25
		11	22	13	2	37
		12	6	1		7
		(blank)	6	18	4	28
7 Total			209	234	18	461
			<b>Yes</b>	<b>No</b>	<b>No Opinion</b>	
D	8	1	16	18	2	36
		2	15	16	3	34
		3	32	23	9	64
		4	20	9		29
		5	31	9	1	41
		6	36	8	3	47
		7	22	20	6	48
		8	16	11	6	33
		9	8	14	1	23
		10	14	9	2	25
		11	9	26	2	37
		12	5	2		7
		(blank)	9	14	5	28
8 Total			233	179	40	452
			<b>Yes</b>	<b>No</b>	<b>No Opinion</b>	
D	9	1	16	20		36
		2	18	12	4	34
		3	50	15	3	68
		4	19	10	2	31
		5	29	11	1	41
		6	38	7	1	46
		7	29	21	2	52
		8	23	9	2	34
		9	13	8	2	23
		10	15	8	2	25
		11	8	26	4	38
		12	6	1		7
		(blank)	9	16	2	27
9 Total			273	164	25	462
			<b>Yes</b>	<b>No</b>	<b>No Opinion</b>	
D	10	1	12	18	4	34
		2	11	16	6	33
		3	39	22	8	69
		4	19	11	1	31
		5	22	20		42
		6	34	8	5	47
		7	22	22	8	52
		8	21	9	4	34
		9	13	10		23
		10	10	11	4	25
		11	7	25	6	38
		12	4	1	2	7
		(blank)	12	13	2	27
10 Total			226	186	50	462

# Zone E

Zone E							
Count of Answers		Answers					
Zone	Question	District	Increasing	Decreasing	Stable	No Opinion	Grand Total
E	1	1	1	15	11	1	28
		2	2	7	10	2	21
		3	2	7	8		17
		4	1	10	4		15
		5	1	11	20		32
		6		5	4		9
		7	1	7	2		10
		8		3	8		11
		9		10	12	1	23
		10	2	6	8	1	17
	(blank)		9	5	1	15	
1 Total			10	90	92	6	198
			Very Much	Somewhat	Not Much	No Opinion	
E	2	1	15	11	2		28
		2	11	7	3		21
		3	6	4	8		18
		4	7	4	4		15
		5	12	12	8		32
		6		5	4		9
		7	2	4	4		10
		8	3	5	3		11
		9	14	3	5	1	23
		10	9	4	4		17
	(blank)	6	5	2	2	15	
2 Total			85	64	47	3	199
			Very Much	Somewhat	Not Much	No Opinion	
E	3	1	19	7	1		27
		2	14	5	1	1	21
		3	9	9			18
		4	11	3	1		15
		5	16	12	3		31
		6	6	3			9
		7	7	2	1		10
		8	7	3	1		11
		9	15	7	1		23
		10	13	4			17
	(blank)	9	5	1		15	
3 Total			126	60	10	1	197
			Very	Somewhat	No Worries	No Opinion	
E	4	1	17	7	3	1	28
		2	8	7	4	2	21
		3	6	9	3		18
		4	9	4	2		15
		5	10	12	10		32
		6	2	5	2		9
		7	7	2	1		10
		8	4	7			11
		9	9	10	4		23
		10	10	4	2	1	17
	(blank)	6	7	2		15	
4 Total			88	74	33	4	199
			Yes	No	No Opinion		
E	5	1	16	10	1		27
		2	10	10	1		21
		3	9	7	2		18
		4	9	6			15
		5	11	19	2		32
		6	6	2	1		9
		7	9	1			10
		8	8	2	1		11
		9	10	11	1		22
		10	11	6			17
	(blank)	8	5	2		15	
5 Total			107	79	11		197

Zone E						
Count of Answers		Answers				
Zone	Question	District	Yes	No	No Opinion	Grand Total
E	6	1	10	15	3	28
		2	6	14	1	21
		3	4	13		17
		4	5	8		13
		5	8	24		32
		6	3	4	2	9
		7	5	4	1	10
		8	5	4	2	11
		9	6	13	4	23
		10	8	9		17
	(blank)	8	5	1	14	
6 Total			68	113	14	195
			Yes	No	No Opinion	
E	7	1	15	8	3	26
		2	9	11	1	21
		3	9	9		18
		4	8	5	1	14
		5	10	21	1	32
		6	5	3	1	9
		7	8	2		10
		8	7	2	2	11
		9	13	8	1	22
		10	11	6		17
	(blank)	9	5		14	
7 Total			104	80	10	194
			Yes	No	No Opinion	
E	8	1	13	11	4	28
		2	7	14		21
		3	12	6		18
		4	5	8	1	14
		5	23	8		31
		6	4	2	3	9
		7	8	1	1	10
		8	6	4	1	11
		9	13	5	5	23
		10	8	7	2	17
	(blank)	4	7	3	14	
8 Total			103	73	20	196
			Yes	No	No Opinion	
E	9	1	17	9	2	28
		2	8	12	1	21
		3	12	5	1	18
		4	9	5		14
		5	21	11		32
		6	3	6		9
		7	7	3		10
		8	7	4		11
		9	14	8		22
		10	9	4	4	17
	(blank)	1	11	2	14	
9 Total			108	78	10	196
			Yes	No	No Opinion	
E	10	1	13	13	1	27
		2	9	10	2	21
		3	9	9		18
		4	4	6	4	14
		5	12	15	3	30
		6	2	6	1	9
		7	5	5		10
		8	5	4	2	11
		9	11	10	2	23
		10	12	1	4	17
	(blank)	2	10	3	15	
10 Total			84	89	22	195

# Zone F

Zone F							
Count of Answers		Answers				Grand Total	
Zone	Question	District	Increasing	Decreasing	No Opinion		
F	1	1	1	29	17	1	48
		2	3	21	6		30
		3	1	19	7	1	28
		4		9	1		10
		5		12	16		28
		6	3	30	31	1	65
		7	1	33	33	1	68
		8	1	14	17	1	33
		9	1	20	8	1	30
		(blank)	1	10	9	1	21
1 Total			12	197	145	7	361
			<b>Very Much</b>	<b>Somewhat</b>	<b>Not Much</b>	<b>No Opinion</b>	
2	2	1	16	16	15	1	48
		2	4	8	19		31
		3	3	9	14	3	29
		4	1	5	3	1	10
		5	7	9	13		29
		6	21	25	19	2	67
		7	24	16	23	6	69
		8	7	7	15	4	33
		9	13	4	11	2	30
		(blank)	6	7	6	2	21
2 Total			102	106	138	21	367
			<b>Very Much</b>	<b>Somewhat</b>	<b>Not Much</b>	<b>No Opinion</b>	
3	3	1	31	8	9		48
		2	15	13	3		31
		3	13	11	5		29
		4	6	4			10
		5	16	12	1		29
		6	39	18	9		66
		7	48	18	4		70
		8	20	11	2		33
		9	22	6	2		30
		(blank)	11	7	3		21
3 Total			221	108	38		367
			<b>Very</b>	<b>Somewhat</b>	<b>No Worries</b>	<b>No Opinion</b>	
4	4	1	31	12	5		48
		2	23	6	2		31
		3	21	6	2		29
		4	9	1			10
		5	15	8	5	1	29
		6	34	25	7	1	67
		7	34	29	7	1	71
		8	15	10	8		33
		9	23	6	1		30
		(blank)	7	8	6		21
4 Total			212	111	43	3	369
			<b>Yes</b>	<b>No</b>	<b>No Opinion</b>		
5	5	1	39	9			48
		2	25	6			31
		3	25	4			29
		4	10				10
		5	20	7	2		29
		6	33	23	10		66
		7	37	27	5		69
		8	22	8	2		32
		9	28	2			30
		(blank)	11	10			21
5 Total			250	96	19		365

Zone F						
Count of Answers		Answers				Grand Total
Zone	Question	District	Yes	No	No Opinion	
F	6	1	30	10	9	49
		2	18	9	2	29
		3	15	9	2	26
		4	9	1		10
		5	9	18	1	28
		6	14	46	5	65
		7	23	40	6	69
		8	11	17	4	32
		9	17	11	1	29
		(blank)	5	13	3	21
6 Total			151	174	33	358
			<b>Yes</b>	<b>No</b>	<b>No Opinion</b>	
7	7	1	32	12	5	49
		2	19	10		29
		3	22	5	1	28
		4	9	1		10
		5	12	14	3	29
		6	24	41	2	67
		7	28	38	4	70
		8	20	10	1	31
		9	23	7		30
		(blank)	12	8	1	21
7 Total			201	146	17	364
			<b>Yes</b>	<b>No</b>	<b>No Opinion</b>	
8	8	1	30	15	1	46
		2	22	6	2	30
		3	20	9		29
		4	7	1	1	9
		5	12	13	3	28
		6	34	27	5	66
		7	32	32	4	68
		8	18	15		33
		9	11	13	6	30
		(blank)	5	12	4	21
8 Total			191	143	26	360
			<b>Yes</b>	<b>No</b>	<b>No Opinion</b>	
9	9	1	35	12	2	49
		2	21	9		30
		3	25	4		29
		4	7	3		10
		5	16	11	1	28
		6	43	16	8	67
		7	43	22	4	69
		8	18	12	3	33
		9	16	11	2	29
		(blank)	2	19		21
9 Total			226	119	20	365
			<b>Yes</b>	<b>No</b>	<b>No Opinion</b>	
10	10	1	25	19	5	49
		2	16	13		29
		3	17	4	7	28
		4	3	4	1	8
		5	9	15	5	29
		6	34	22	11	67
		7	33	27	10	70
		8	12	18	2	32
		9	11	16	2	29
		(blank)	7	13	1	21
10 Total			167	151	44	362

# Zone G

Zone G							
Count of Answers		Answers					
Zone	Question	District	Increasing	Decreasing	Stable	No Opinion	Grand Total
G	1	1	2	6	4	1	13
		2	1	5	14		20
		3	2	3	4	3	12
		4		7	7		14
		5		7	3		10
		6		5	4		9
		7		7	4		11
		8	1	9	11	1	22
		9	3	5	4		12
		10		14	7		21
		11		10	13		23
		12	1	19	6	1	27
		13		4	2		6
		(blank)		6	8	1	15
1 Total			10	107	91	7	215
			<b>Very Much</b>	<b>Somewhat</b>	<b>Not Much</b>	<b>No Opinion</b>	
G	2	1	3	4	6		13
		2	12	4	3	1	20
		3	6		4	2	12
		4	10	1	3		14
		5	7	1	2		10
		6	4	4		1	9
		7	8	3			11
		8	14	6	2		22
		9	6	2	4		12
		10	14	5	1	1	21
		11	12	7	4		23
		12	3	11	11	2	27
		13	2	1	3		6
		(blank)		12	4		16
2 Total			113	49	47	7	216
			<b>Very Much</b>	<b>Somewhat</b>	<b>Not Much</b>	<b>No Opinion</b>	
G	3	1	9	3	1		13
		2	13	6	1		20
		3	5	6		1	12
		4	9	4		1	14
		5	4	3	3		10
		6	7	2			9
		7	8	2	1		11
		8	11	7	3	1	22
		9	6	5			11
		10	17	3		1	21
		11	13	7	3		23
		12	7	17	3		27
		13	3	1	2		6
		(blank)		11	1	4	16
3 Total			123	67	21	4	215
			<b>Very</b>	<b>Somewhat</b>	<b>No Worries</b>	<b>No Opinion</b>	
G	4	1	3	3	5	2	13
		2	4	8	8		20
		3	2	7	3		12
		4	4	4	6		14
		5	7	1	2		10
		6	2	6	1		9
		7	4	5	2		11
		8	6	8	8		22
		9	3	4	5		12
		10	13	6	2		21
		11	7	7	9		23
		12	15	9	2	1	27
		13	4	2			6
		(blank)		7	6	3	16
4 Total			81	76	56	3	216
			<b>Yes</b>	<b>No</b>	<b>No Opinion</b>		
G	5	1	3	7	3		13
		2	6	11	2		19
		3	3	8	1		12
		4	6	7	1		14
		5	8	2			10
		6	5	3	1		9
		7	10	1			11
		8	10	11	1		22
		9	6	5	1		12
		10	15	5	1		21
		11	12	11			23
		12	20	5	2		27
		13	5	1			6
		(blank)		10	6		16
5 Total			119	83	13	215	

Zone G						
Count of Answers		Answers				
Zone	Question	District	Yes	No	No Opinion	Grand Total
G	6	1	6	5	2	13
		2	3	17		20
		3	4	8		12
		4	3	11		14
		5	6	4		10
		6	4	4	1	9
		7	5	4	1	10
		8	1	17	3	21
		9	2	9	1	12
		10	13	7	1	21
		11	9	12	1	22
		12	14	11	2	27
		13		6		6
		(blank)		5	10	1
6 Total			75	125	13	213
			<b>Yes</b>	<b>No</b>	<b>No Opinion</b>	
G	7	1	5	5	3	13
		2	7	12		19
		3	3	8	1	12
		4	4	8	1	13
		5	8	2		10
		6	5	3	1	9
		7	10	1		11
		8	10	11	1	22
		9	4	7	1	12
		10	16	4	1	21
		11	13	10		23
		12	20	7		27
		13	4	2		6
		(blank)		12	3	1
7 Total			121	83	10	214
			<b>Yes</b>	<b>No</b>	<b>No Opinion</b>	
G	8	1	4	9		13
		2	10	10		20
		3	4	7	1	12
		4	11	3		14
		5	8	2		10
		6	5	3	1	9
		7	7	3		10
		8	11	9	2	22
		9	4	8		12
		10	14	6	1	21
		11	11	11	1	23
		12	16	9	2	27
		13	1	5		6
		(blank)		2	13	1
8 Total			108	98	9	215
			<b>Yes</b>	<b>No</b>	<b>No Opinion</b>	
G	9	1	5	8		13
		2	13	5	2	20
		3	5	6	1	12
		4	11	3		14
		5	8	2		10
		6	6	2	1	9
		7	5	6		11
		8	12	10		22
		9	3	7	2	12
		10	14	6	1	21
		11	13	10		23
		12	20	5	2	27
		13	4	2		6
		(blank)		1	14	1
9 Total			120	86	10	216
			<b>Yes</b>	<b>No</b>	<b>No Opinion</b>	
G	10	1	7	6		13
		2	8	9	2	19
		3	3	8	1	12
		4	6	8		14
		5	7	1	2	10
		6	6	3		9
		7	7	3		10
		8	11	7	3	21
		9	5	6	1	12
		10	8	12	1	21
		11	10	12	1	23
		12	10	14	3	27
		13	2	4		6
		(blank)		7	8	1
10 Total			97	101	15	213