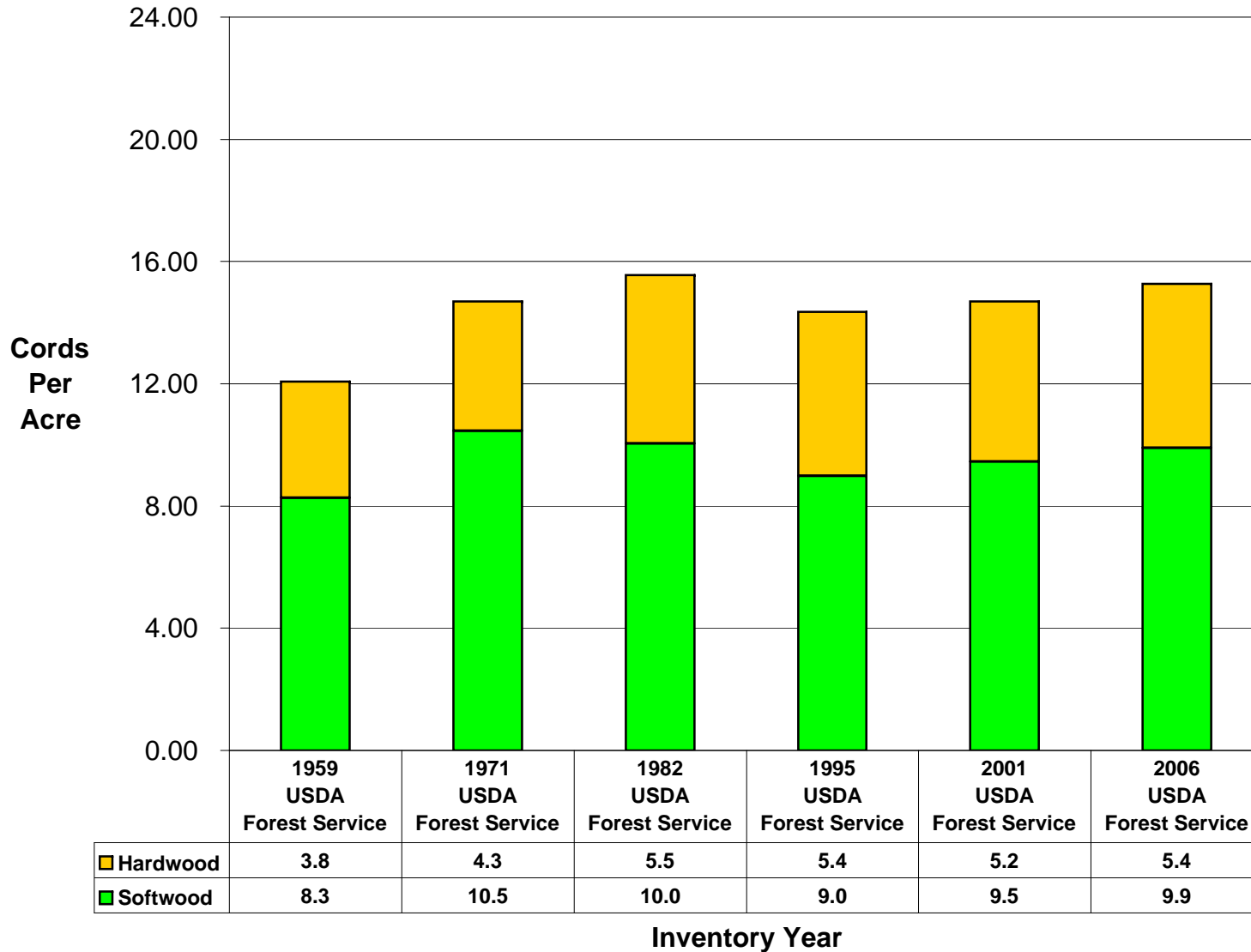


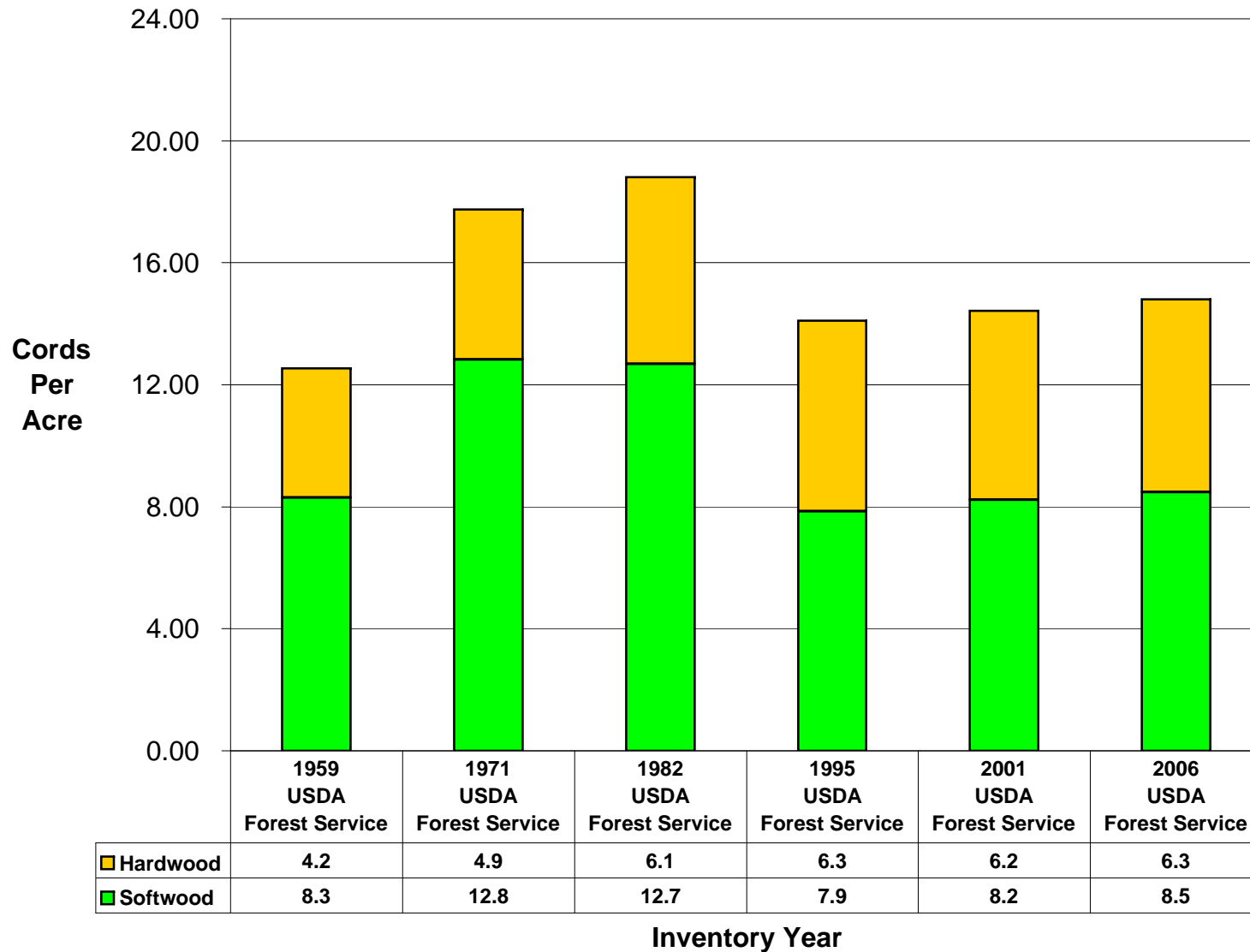
## APPENDIX C

## Appendix C. Figure 1A. Eastern Megaregion, volume per acre on timberland of pulpwood quality or better trees<sup>1</sup>, by inventory year



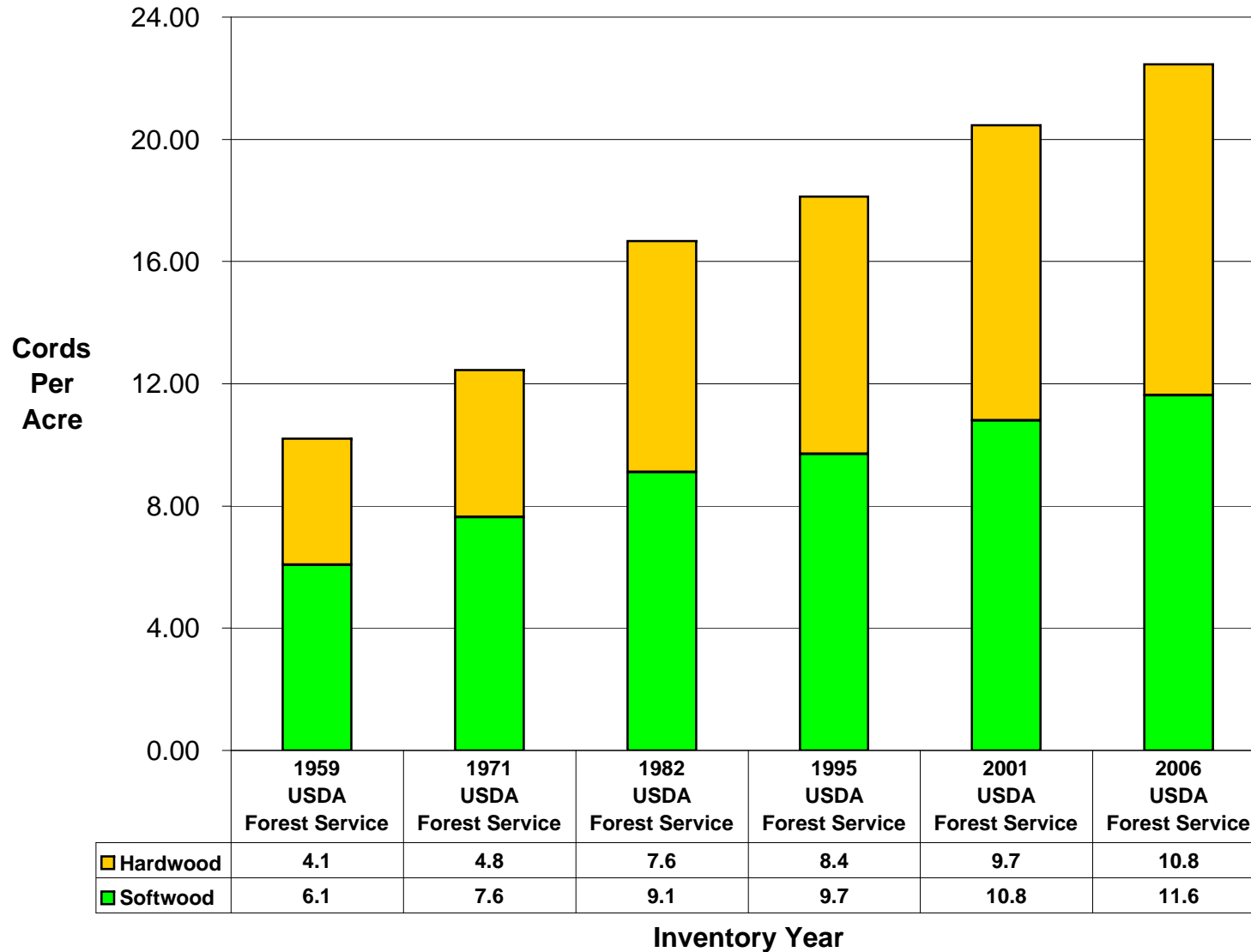
<sup>1</sup> Pulpwood Quality or Better Trees contain the Tree Classes of Growing Stock and Rough Cull

## Appendix C. Figure 1B. Northern Megaregion, volume per acre on timberland of pulpwood quality or better trees<sup>1</sup>, by inventory year



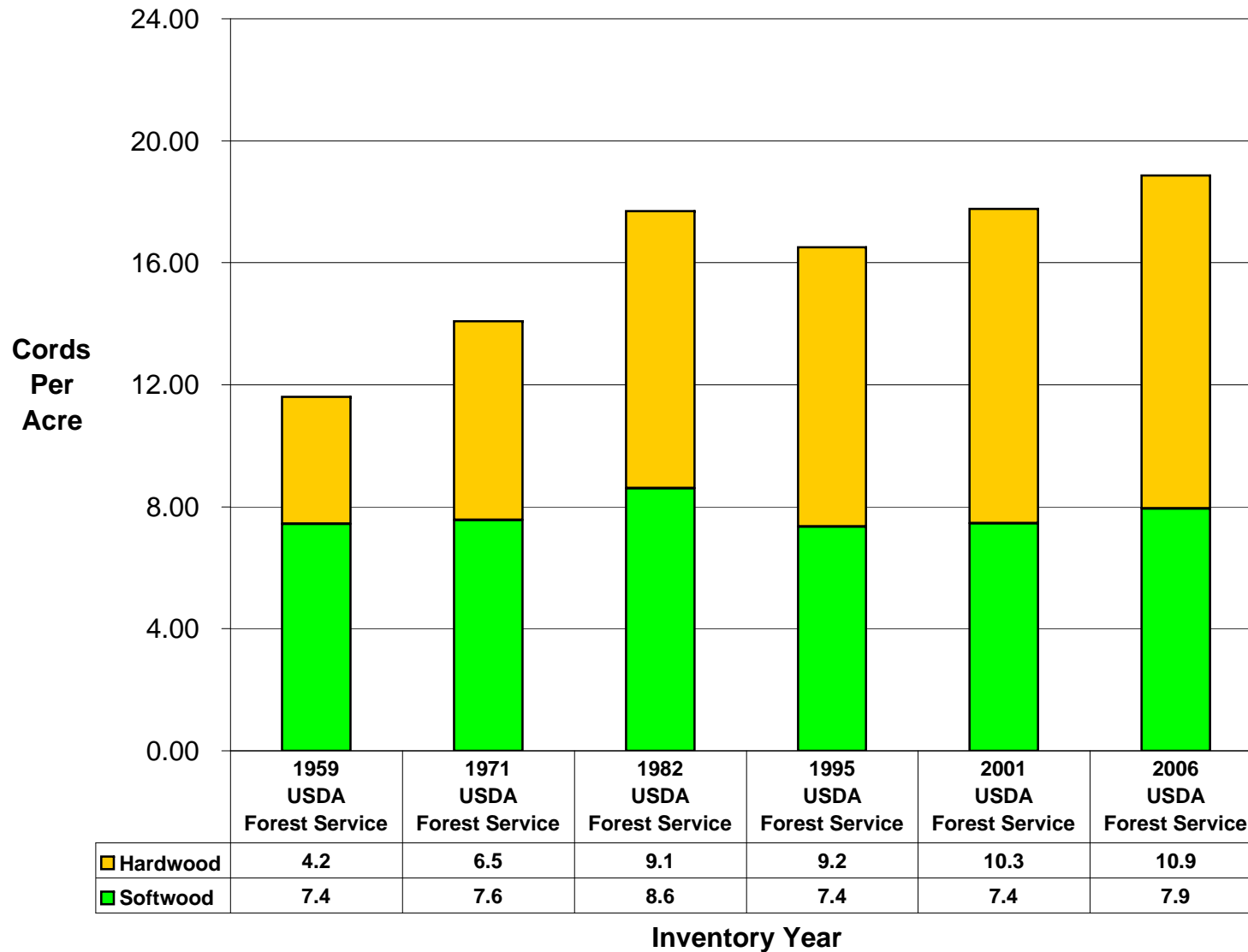
<sup>1</sup> Pulpwood Quality or Better Trees contain the Tree Classes of Growing Stock and Rough Cull

## Appendix C. Figure 1C. Southern Megaregion, volume per acre on timberland of pulpwood quality or better trees<sup>1</sup>, by inventory year



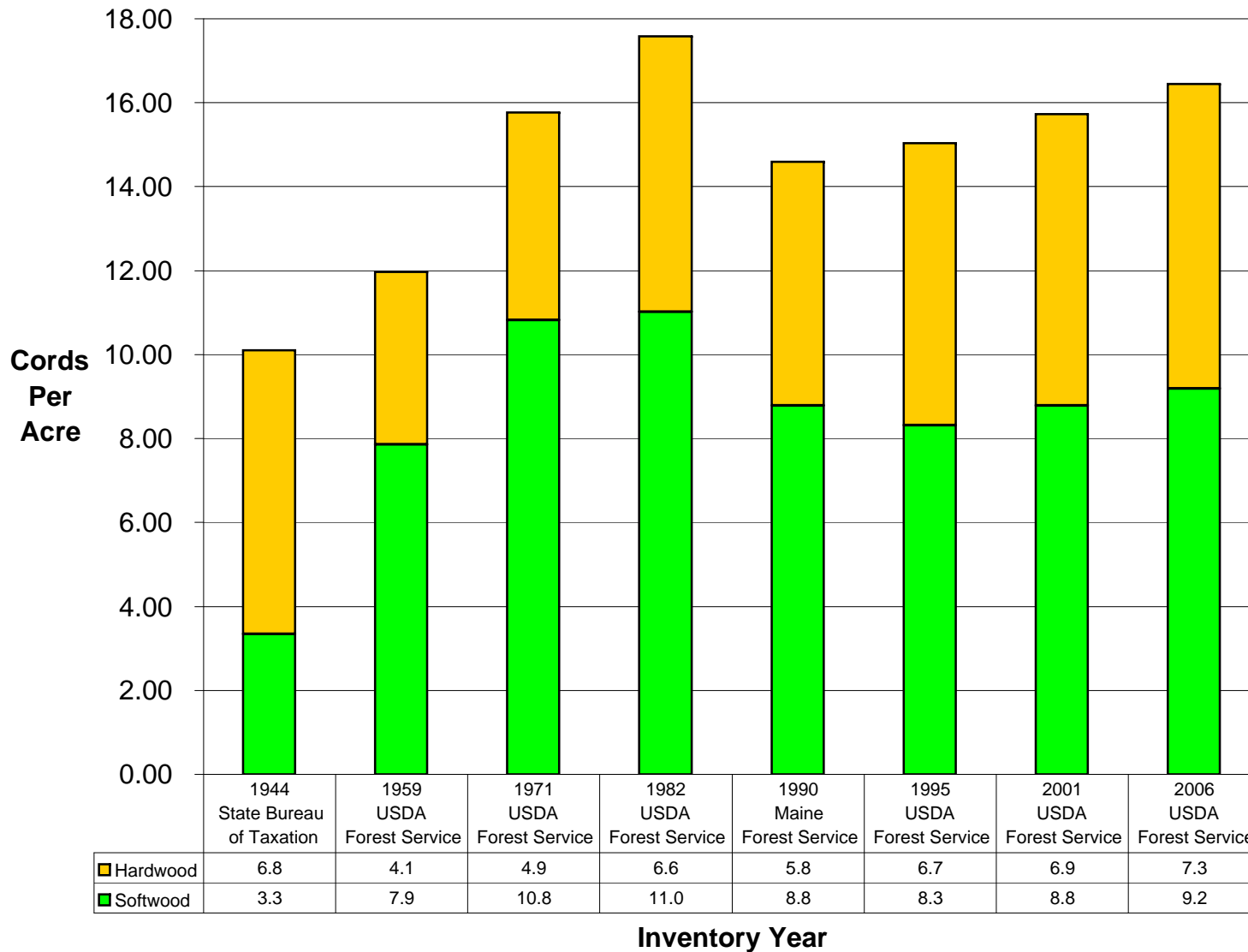
<sup>1</sup> Pulpwood Quality or Better Trees contain the Tree Classes of Growing Stock and Rough Cull

## Appendix C. Figure 1D. Western Megaregion, volume per acre on timberland of pulpwood quality or better trees<sup>1</sup>, by inventory year



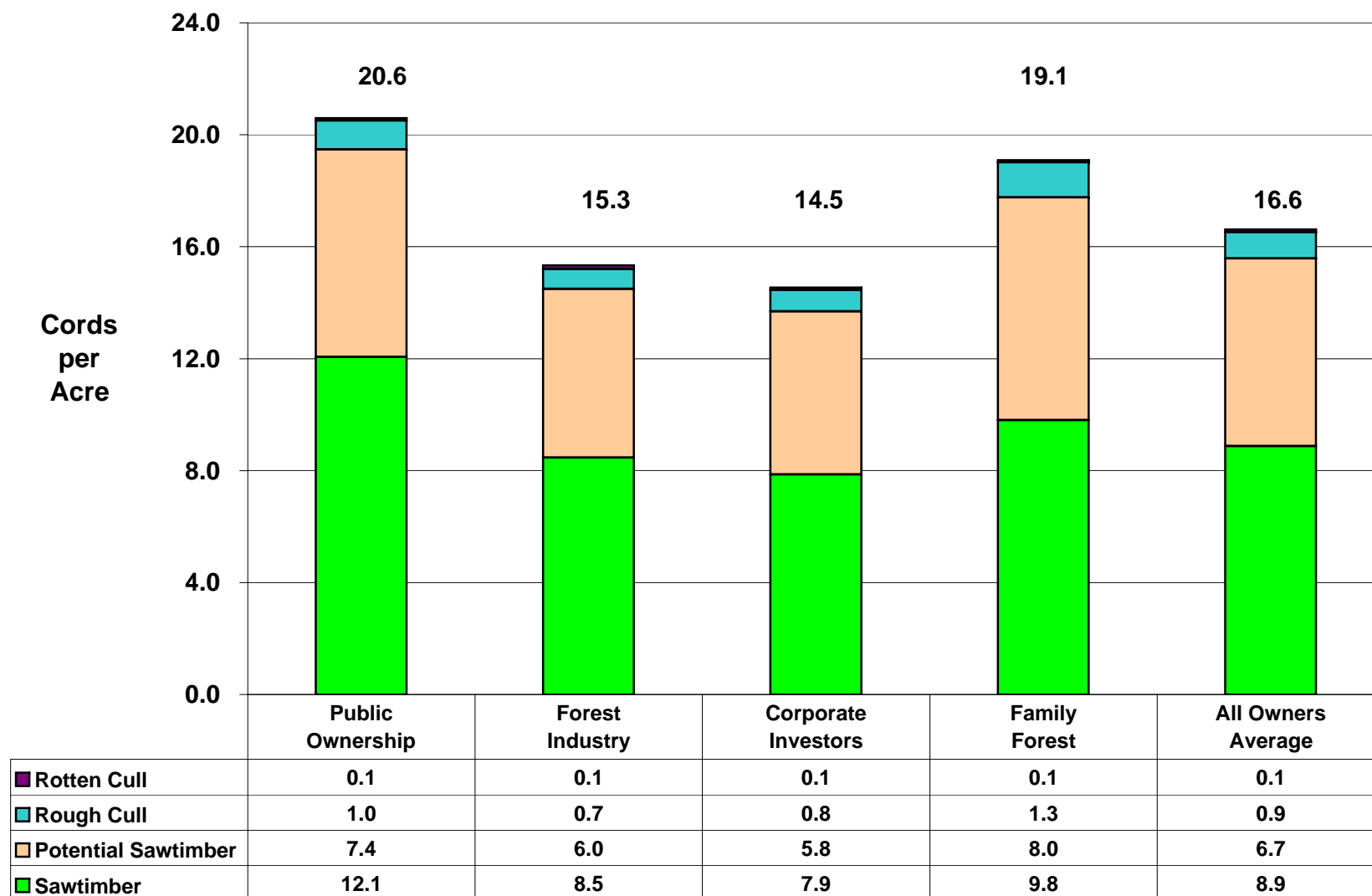
<sup>1</sup> Pulpwood Quality or Better Trees contain the Tree Classes of Growing Stock and Rough Cull

**Appendix C. Figure 1. Statewide, volume per acre on timberland of pulpwood quality or better trees<sup>1</sup>, by inventory year**



<sup>1</sup> Pulpwood Quality or Better Trees contain the Tree Classes of Growing Stock and Rough Cull

**Appendix C. Figure 2A. Statewide, volume per acre on timberland of all live trees (+5.0" dbh), by ownership class and tree quality, Maine, 2006**



Department of Conservation

Data Source:

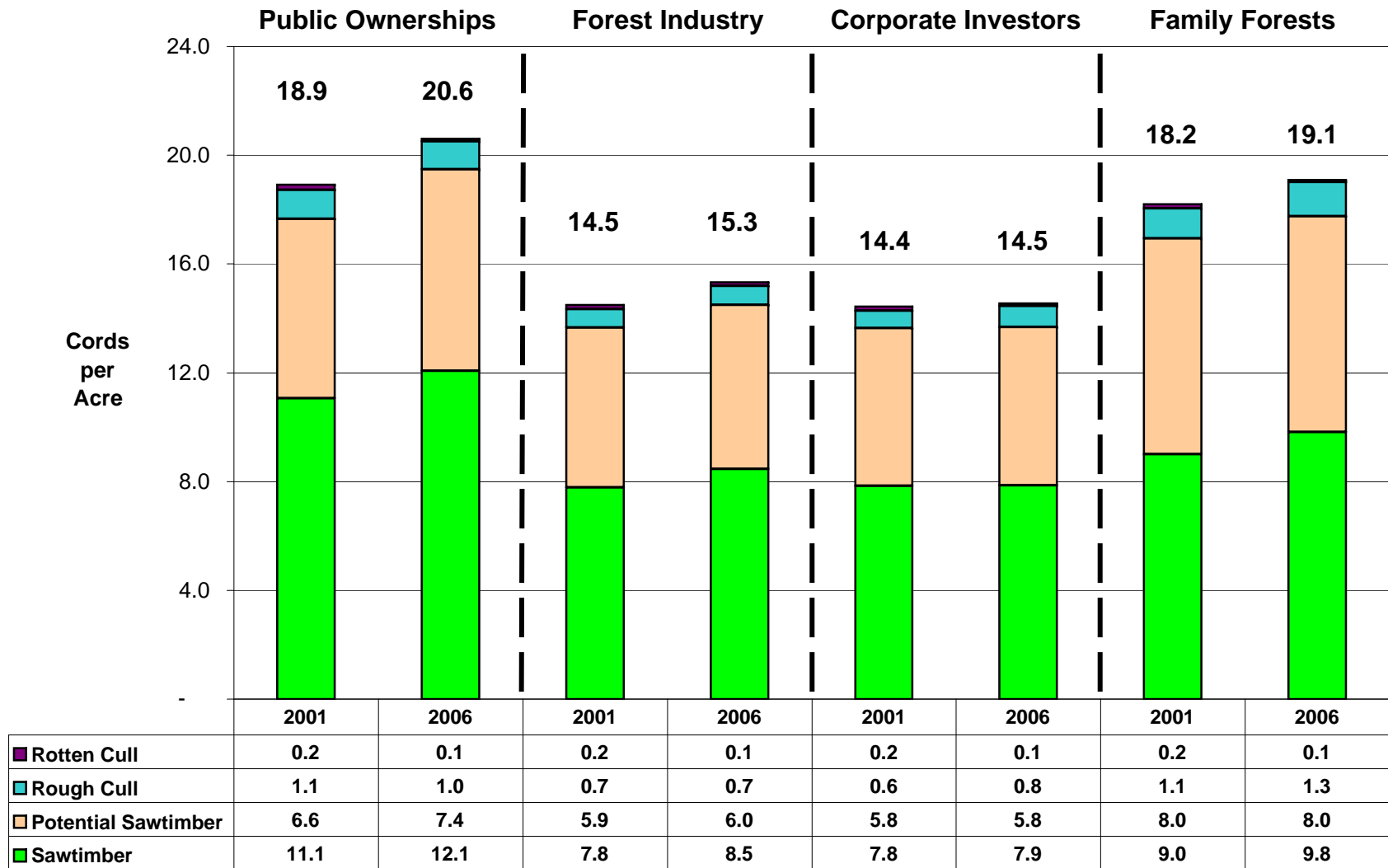
USDA Forest Service

Maine Forest Service

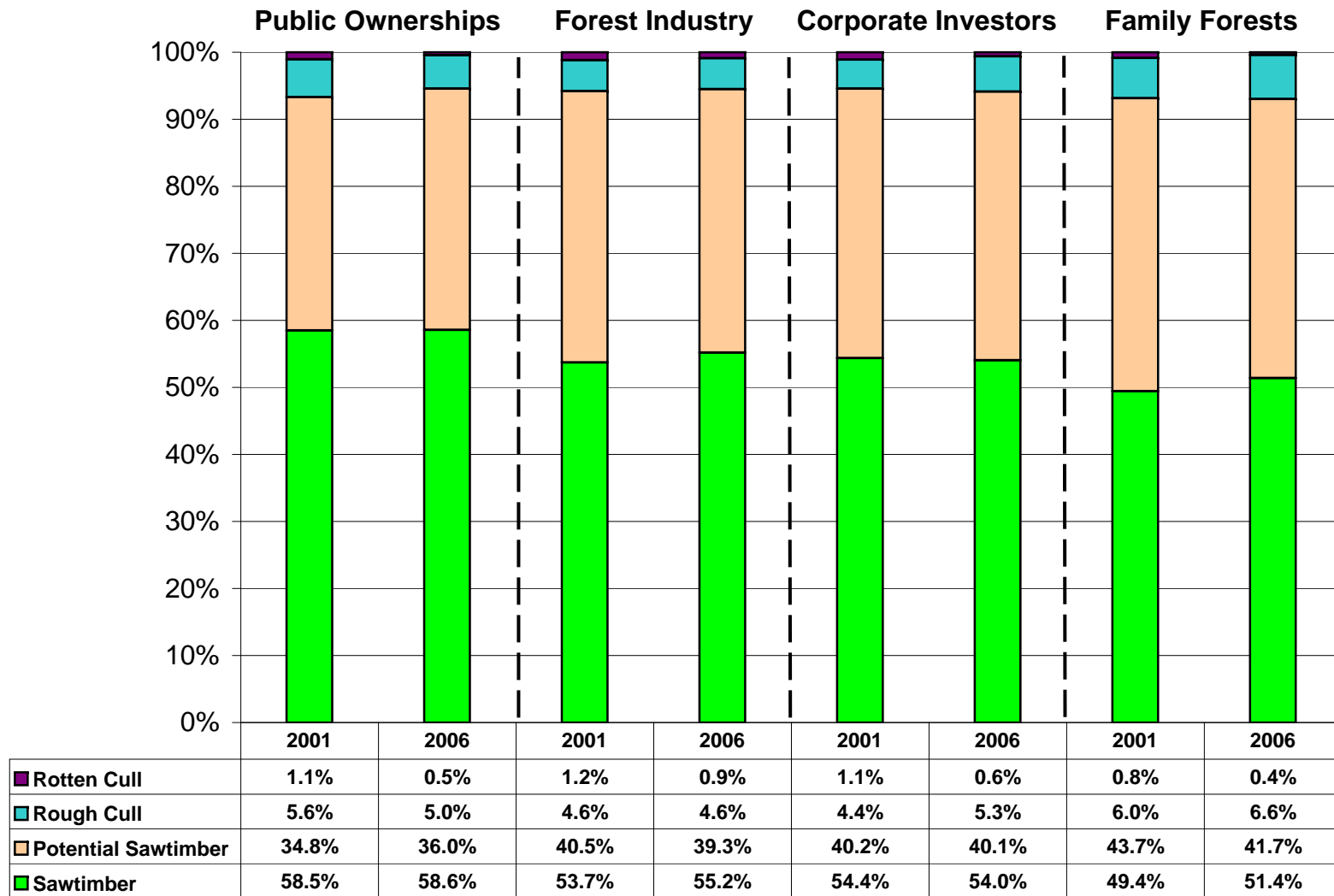
Forest Inventory and Analysis - Northern Research Station

3/29/2009

**Appendix C. Figure 2B. Statewide, separate estimates, but paired comparisons of volume per acre on timberland, by ownership class and tree quality, Maine**



**Appendix C. Figure 2C. Statewide, separate estimates, but paired comparisons of volume per acre on timberland, by ownership class and tree quality**



Department of Conservation

Data Source:

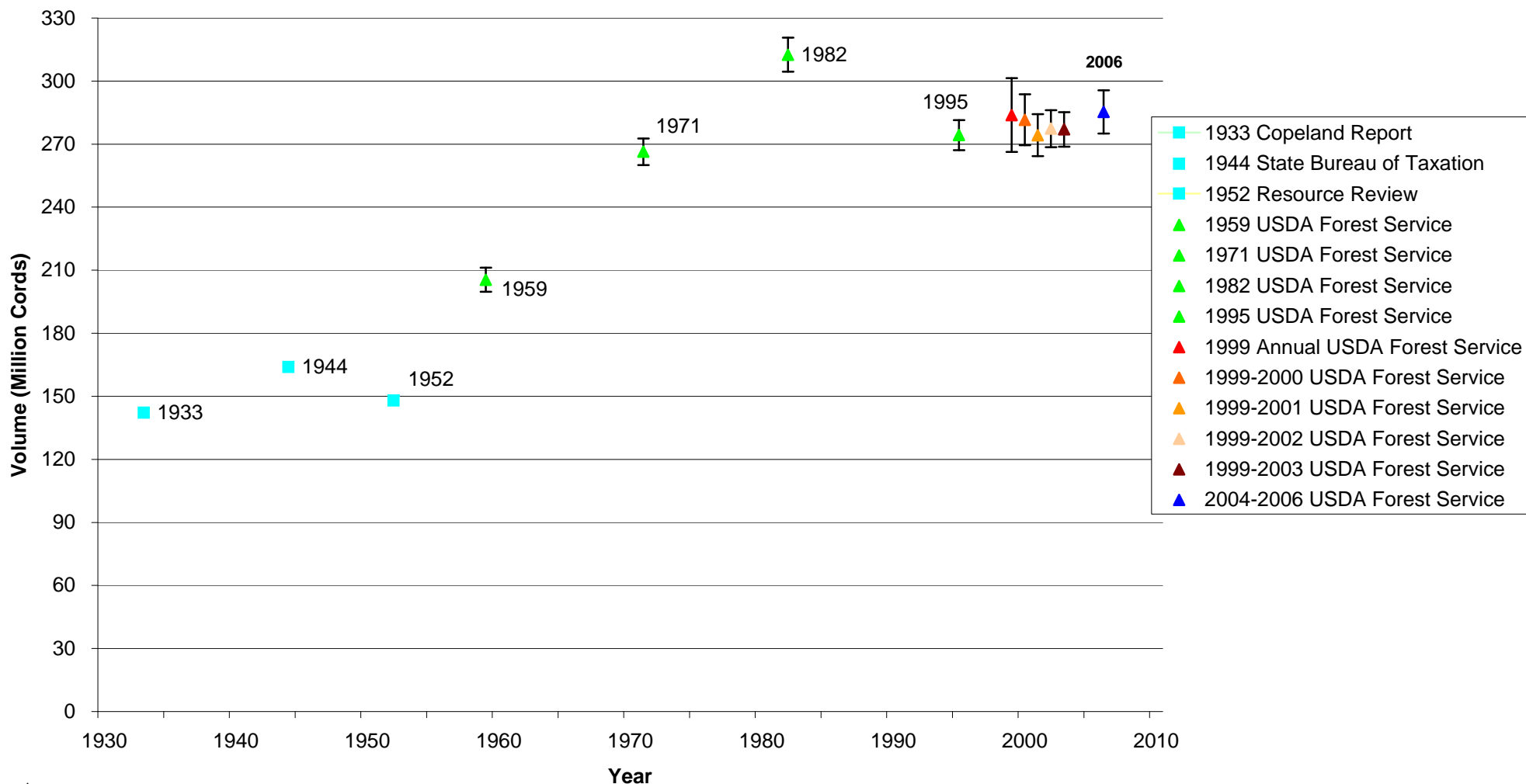
USDA Forest Service

Maine Forest Service

Forest Inventory and Analysis - Northern Research Station

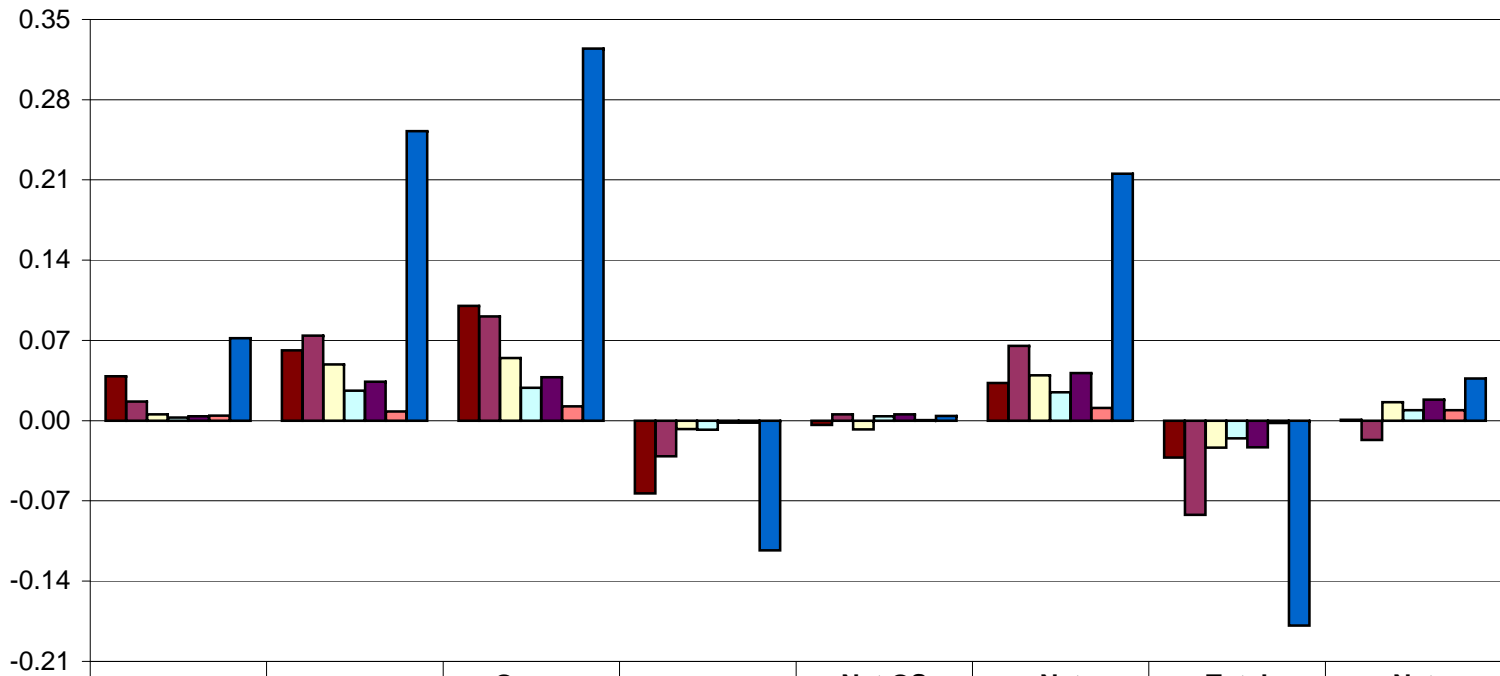
3/29/2009

**Appendix C. Figure 3. Volume Estimates of Pulpwood Quality or Better Trees<sup>1</sup> and the 95% Confidence Interval**



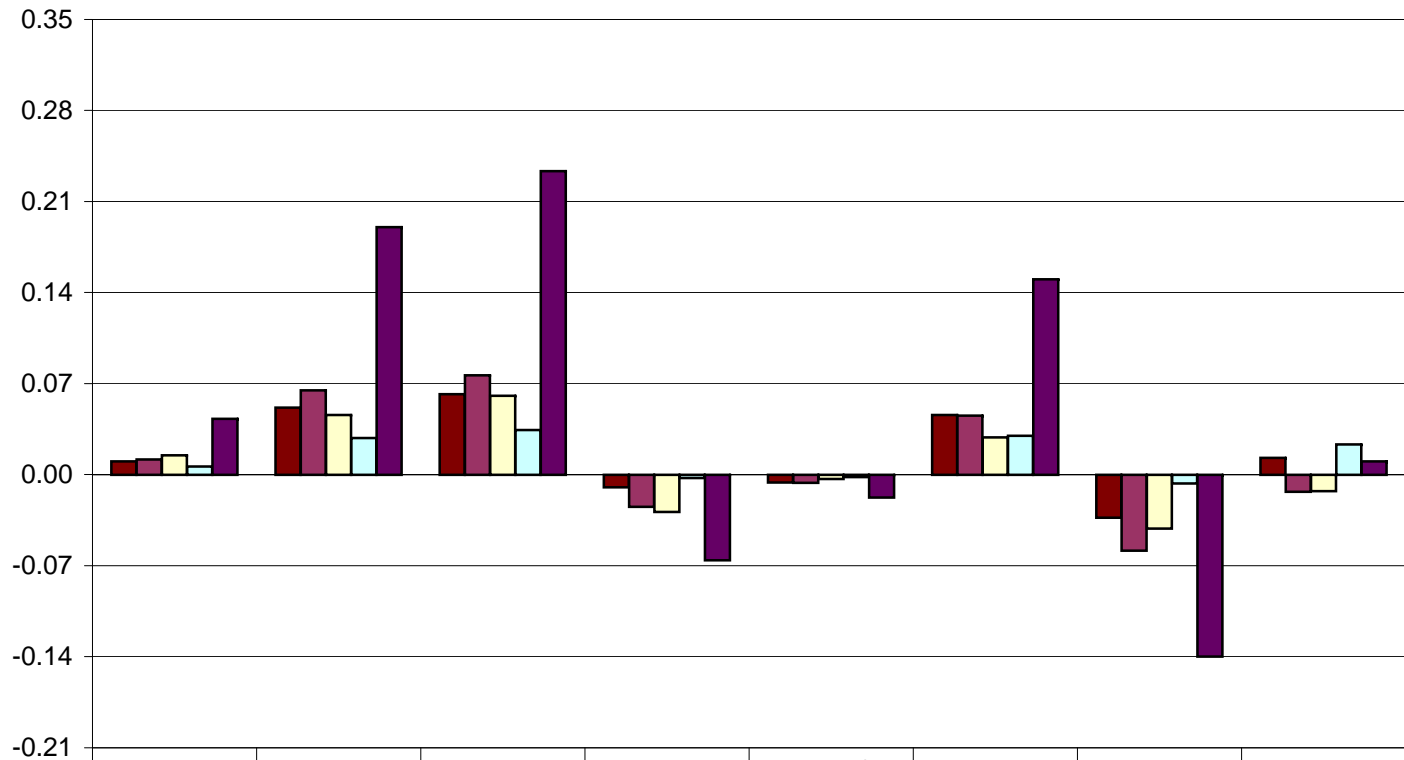
<sup>1</sup>Pulpwood Quality or Better Trees contain the Tree Classes of Growing Stock and Rough Cull

**Appendix C. Figure 4. Softwood species/species groups and all softwood combined, displaying all components of change (cords/acre/year), statewide, for the growth period of 1999-2001 to 2004-2006**



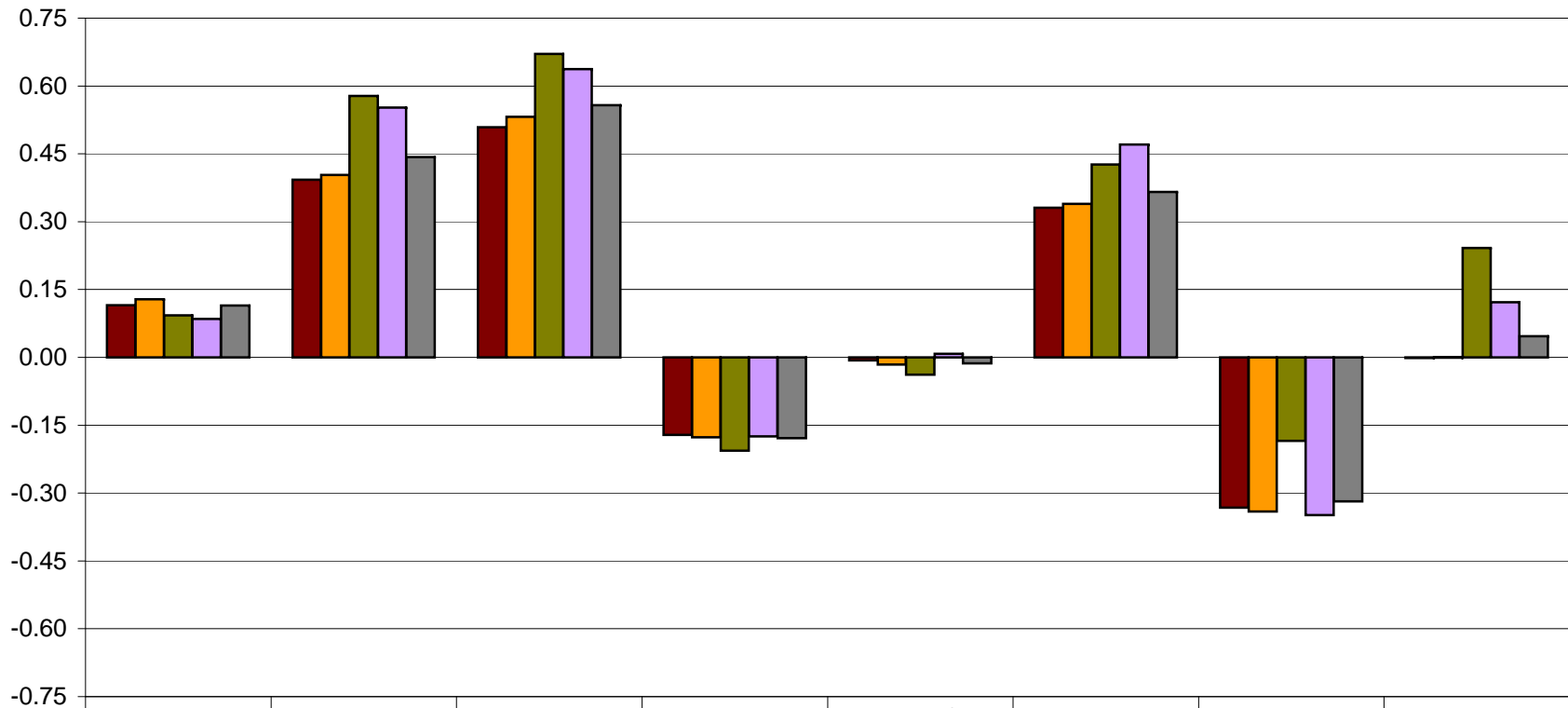
	Ingrowth	Accretion	Gross Growth	Mortality	Net GS Increment	Net Growth	Total Removals	Net Change
■ Balsam Fir	0.04	0.06	0.10	-0.06	0.00	0.03	-0.03	0.00
■ Spruces	0.02	0.07	0.09	-0.03	0.01	0.07	-0.08	-0.02
□ Eastern White Pine	0.01	0.05	0.05	-0.01	-0.01	0.04	-0.02	0.02
□ Northern White Cedar	0.00	0.03	0.03	-0.01	0.00	0.02	-0.02	0.01
■ Eastern Hemlock	0.00	0.03	0.04	0.00	0.01	0.04	-0.02	0.02
■ Other Comm. Softwoods	0.00	0.01	0.01	0.00	0.00	0.01	0.00	0.01
■ All Softwoods	0.07	0.25	0.32	-0.11	0.00	0.22	-0.18	0.04

**Appendix C. Figure 5. Hardwood species/species groups and all hardwood combined, displaying all components of change (cords/acre/year), statewide, for the growth period of 1999-2001 to 2004-2006**



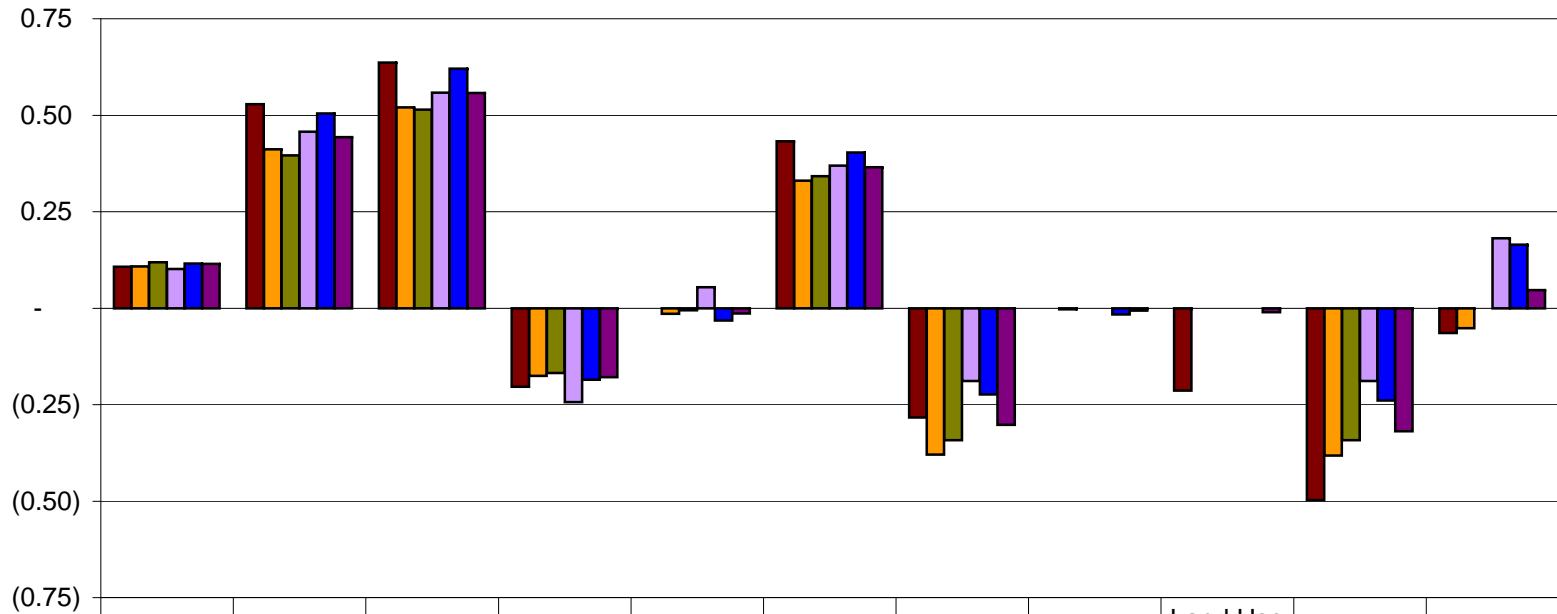
	Ingrowth	Accretion	Gross Growth	Mortality	Net GS Increment	Net Growth	Total Removals	Net Change
■ Red Maple	0.01	0.05	0.06	-0.01	-0.01	0.05	-0.03	0.01
■ Sugar Maple/Beech/Yellow Birch	0.01	0.06	0.08	-0.02	-0.01	0.05	-0.06	-0.01
■ Intolerant Hardwoods	0.01	0.05	0.06	-0.03	0.00	0.03	-0.04	-0.01
■ Other Comm. Hardwoods	0.01	0.03	0.03	0.00	0.00	0.03	-0.01	0.02
■ All Hardwoods	0.04	0.19	0.23	-0.07	-0.02	0.15	-0.14	0.01

**Appendix C. Figure 6. All species combined and displaying all components of change (cords/acre/year), by Megaregion and statewide, for the growth period of 1999-2001 to 2004-2006**



	Ingrowth	Accretion	Gross Growth	Mortality	Net GS Increment	Net Growth	Total Removals	Net Change
■ Eastern	0.12	0.39	0.51	-0.17	-0.01	0.33	-0.33	0.00
■ Northern	0.13	0.40	0.53	-0.18	-0.02	0.34	-0.34	0.00
■ Southern	0.09	0.58	0.67	-0.21	-0.04	0.43	-0.18	0.24
■ Western	0.08	0.55	0.64	-0.17	0.01	0.47	-0.35	0.12
■ Statewide	0.11	0.44	0.56	-0.18	-0.01	0.37	-0.32	0.05

**Appendix C. Figure 7. All species combined and displaying all components of change (cords/acre/year), by ownership class and statewide, for the growth period of 1999-2001 to 2004-2006 (Ownership class at the 2004-2006 measurement is used for assignment)**



	Ingrowth	Accretion	Gross Growth	Mortality	Net GS Increment	Net Growth	Harvest Removals	Land Use Removals	Land Use to Reserve	Total Removals	Net Change
Public Ownerships	0.11	0.53	0.64	(0.20)	(0.00)	0.43	(0.28)	(0.00)	(0.21)	(0.50)	(0.06)
Forest Industry	0.11	0.41	0.52	(0.18)	(0.01)	0.33	(0.38)	(0.00)	-	(0.38)	(0.05)
Corporate Investors	0.12	0.40	0.51	(0.17)	(0.01)	0.34	(0.34)	-	-	(0.34)	(0.00)
NGO's, Associations, & Native Americans	0.10	0.46	0.56	(0.24)	0.05	0.37	(0.19)	-	-	(0.19)	0.18
Family Forests	0.12	0.50	0.62	(0.19)	(0.03)	0.40	(0.22)	(0.02)	-	(0.24)	0.16
Statewide	0.11	0.44	0.56	(0.18)	(0.01)	0.37	(0.30)	(0.01)	(0.01)	(0.32)	0.05