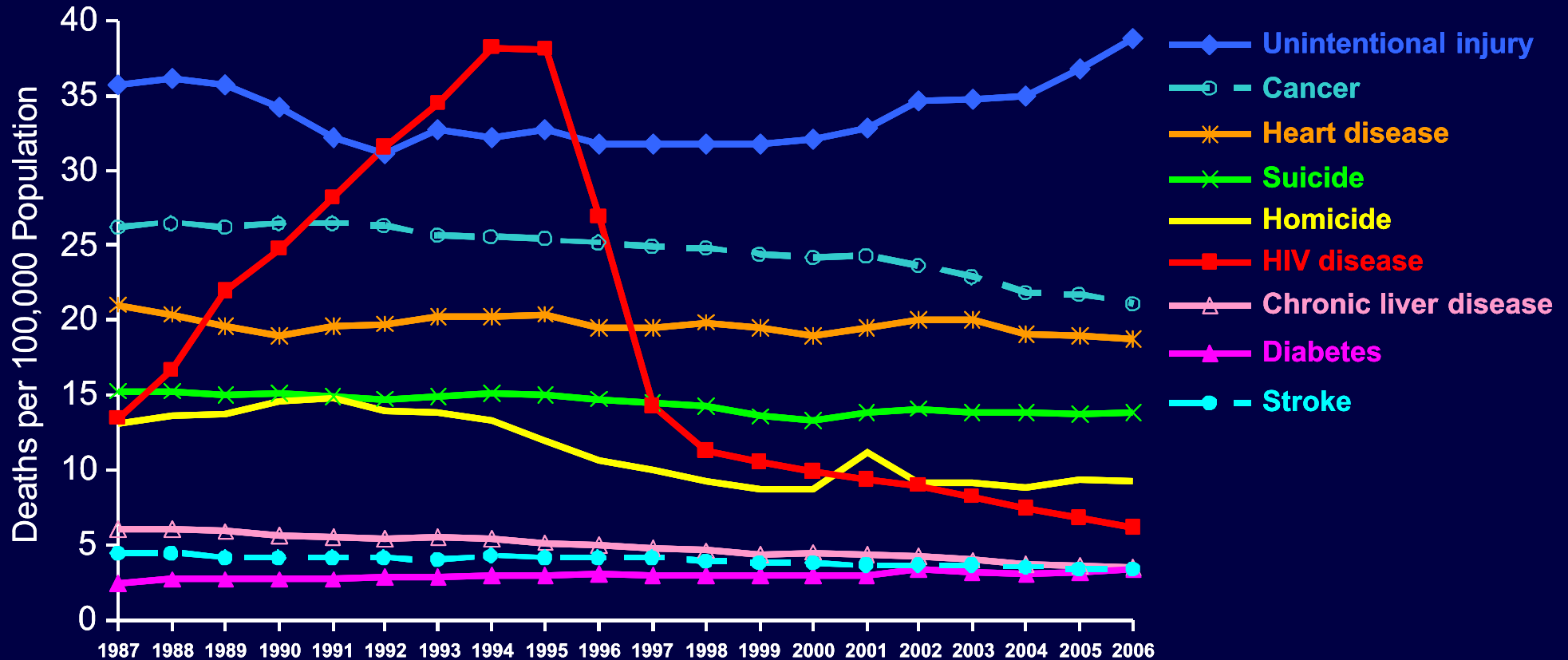


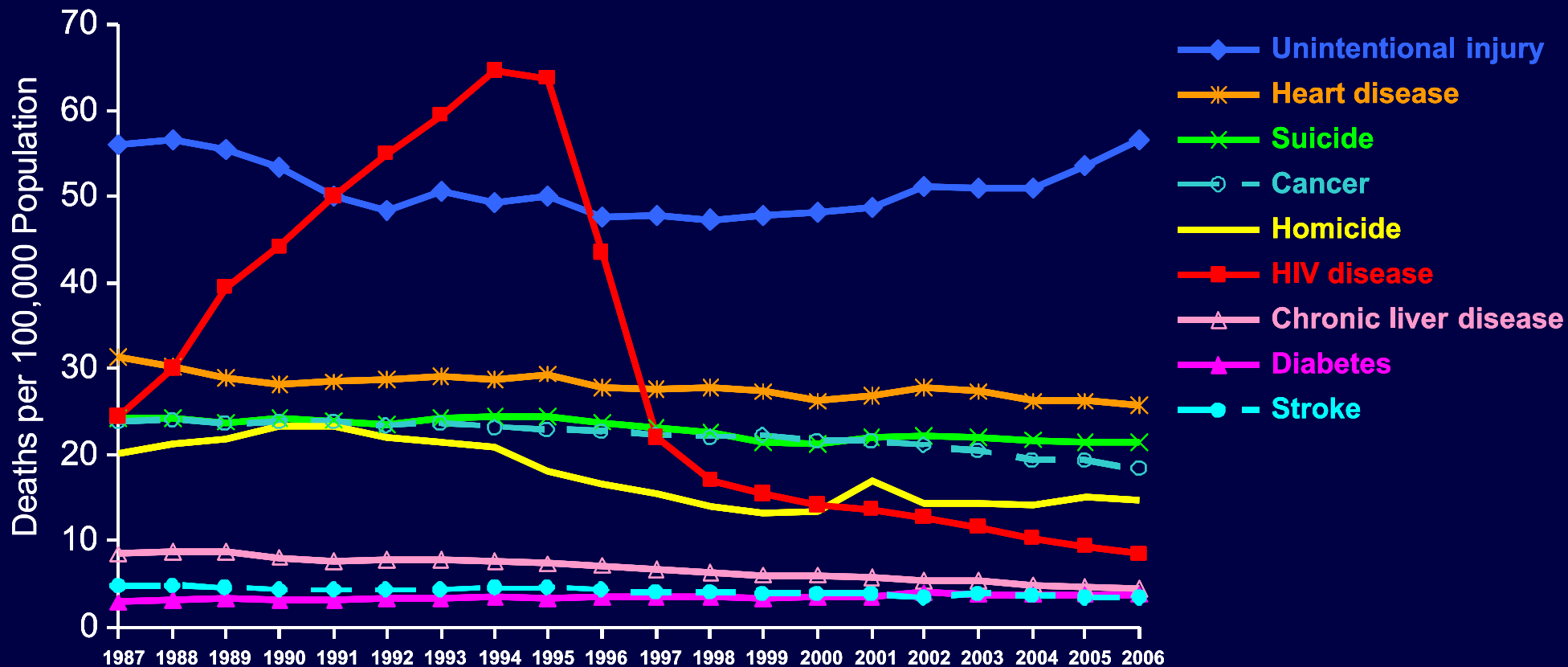
# Trends in Annual Rates of Death due to the 9 Leading Causes among Persons 25–44 Years Old, United States, 1987–2006



Note: For comparison with data for 1999 and later years, data for 1987–1998 were modified to account for ICD-10 rules instead of ICD-9 rules.



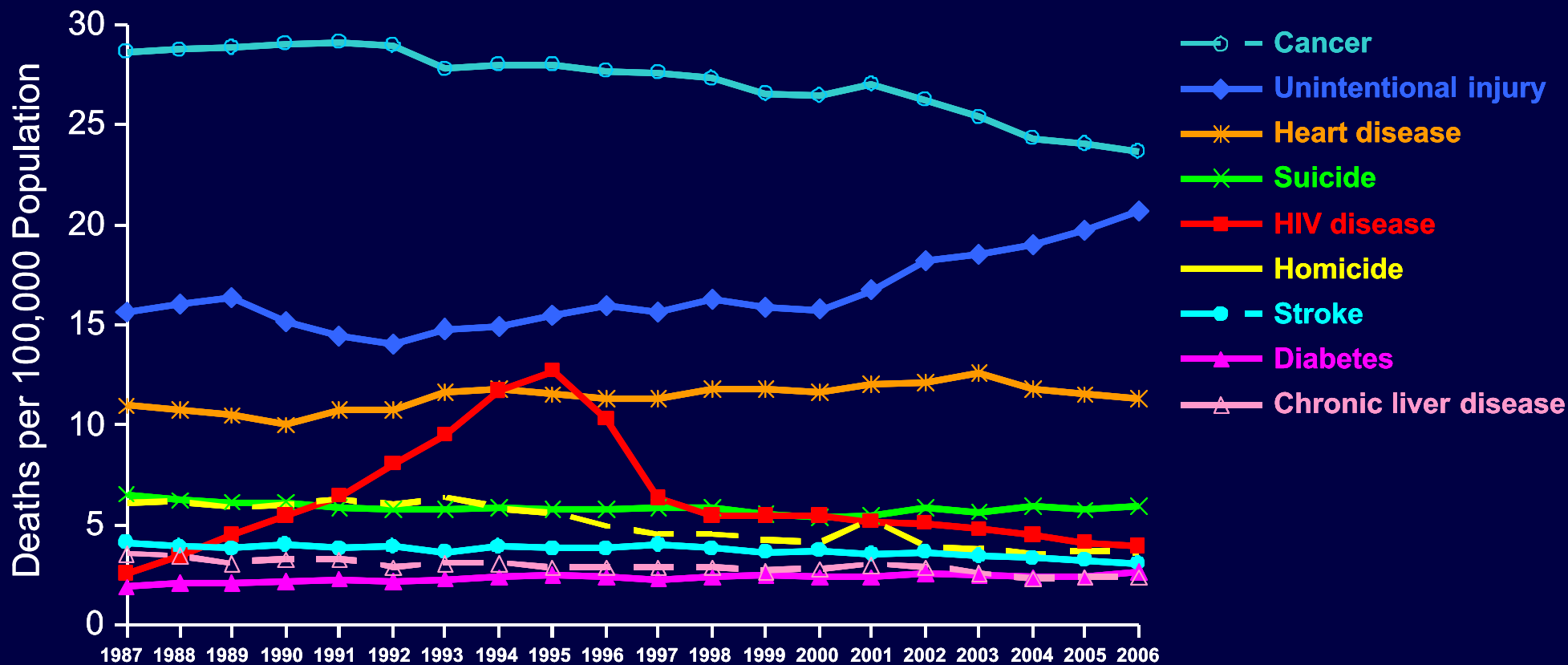
# Trends in Annual Rates of Death due to the 9 Leading Causes among Men 25–44 Years Old, United States, 1987–2006



Note: For comparison with data for 1999 and later years, data for 1987–1998 were modified to account for ICD-10 rules instead of ICD-9 rules.



# Trends in Annual Rates of Death due to the 9 Leading Causes among Women 25–44 Years Old, United States, 1987–2006



Note: For comparison with data for 1999 and later years, data for 1987–1998 were modified to account for ICD-10 rules instead of ICD-9 rules.

