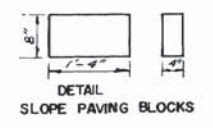
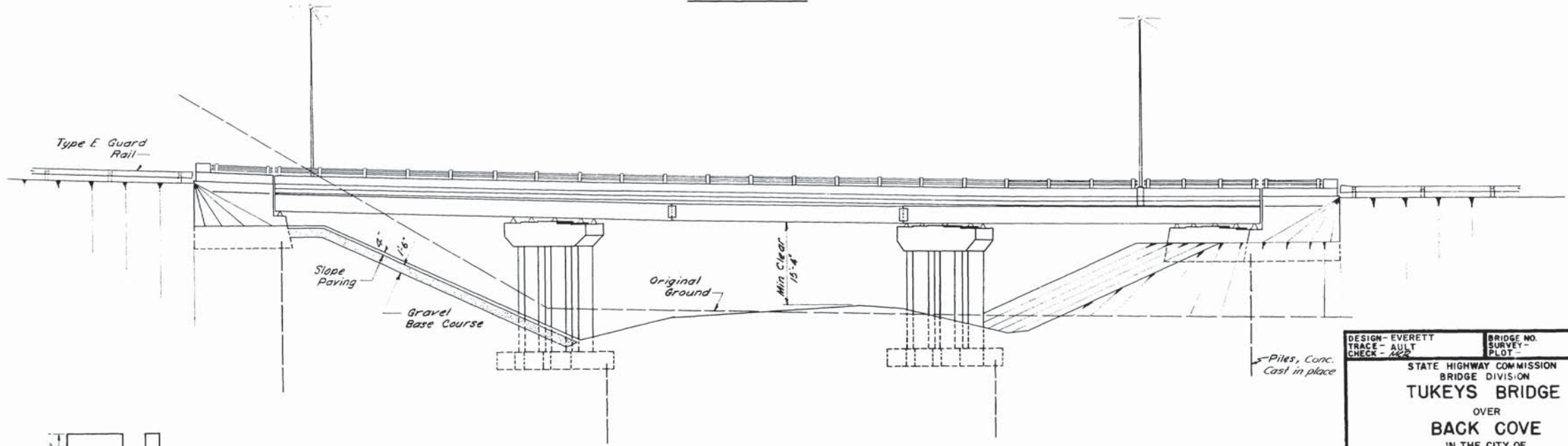
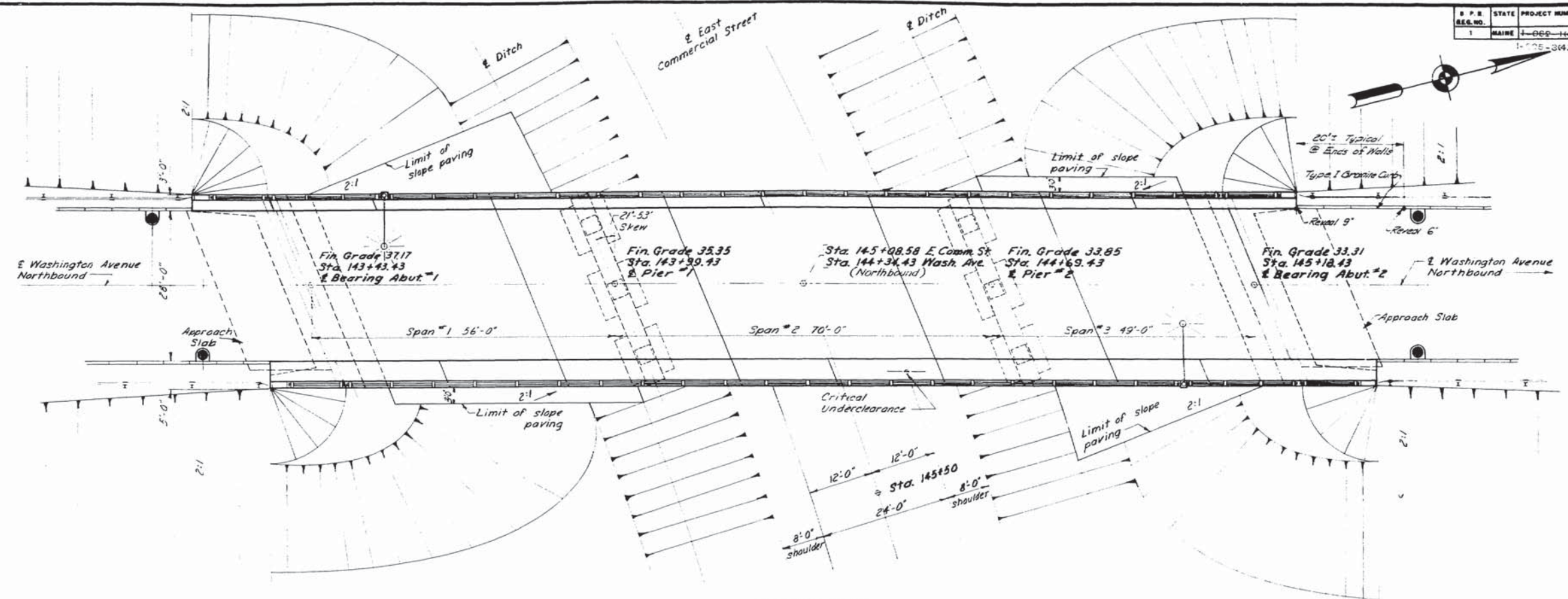


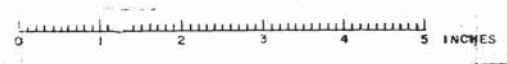
D.P.E.	STATE	PROJECT NUMBER	SHEET NO.	TOTAL SHEETS
1	MAINE	1-066-143	103	166



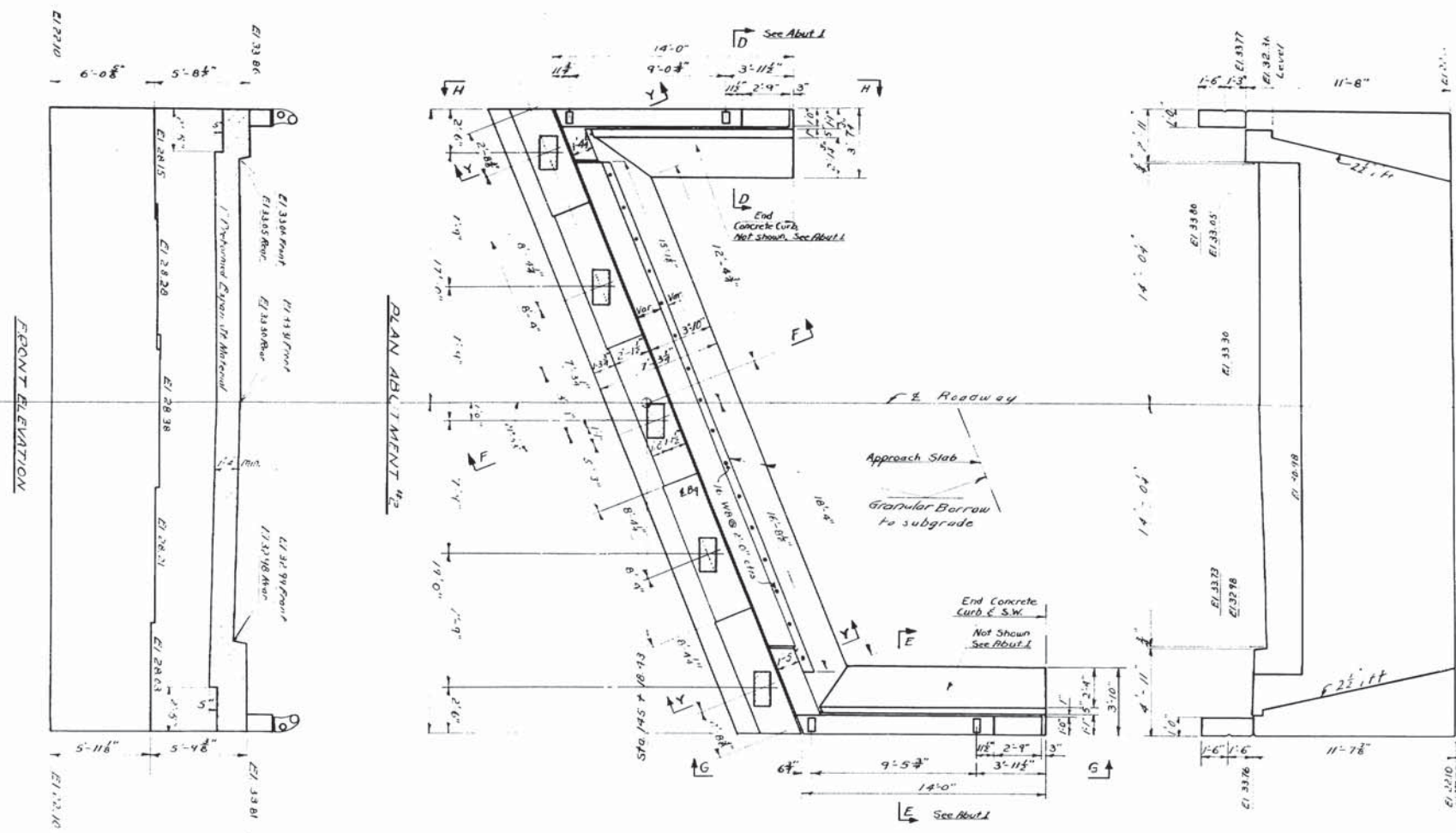
DESIGN - EVERETT
TRACE - AULT
CHECK - 1462

BRIDGE NO. SURVEY PLOT

STATE HIGHWAY COMMISSION
BRIDGE DIVISION
TUKEYS BRIDGE
OVER
BACK COVE
IN THE CITY OF
PORTLAND
CUMBERLAND COUNTY
OVERPASS NO. 2
GENERAL PLAN & ELEVATION
SHEET 103 OF 166 AUGUSTA, MAINE OCT. 1957



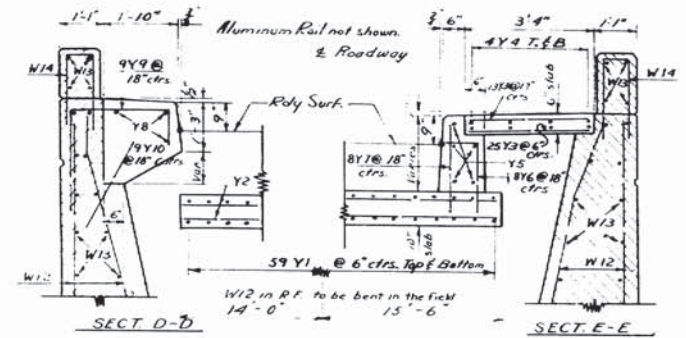
D. P. R. NO.	STATE	PROJECT NUMBER	SHEET NO.	TOTAL SHEETS
1	MAINE	1-100-1443	105	166



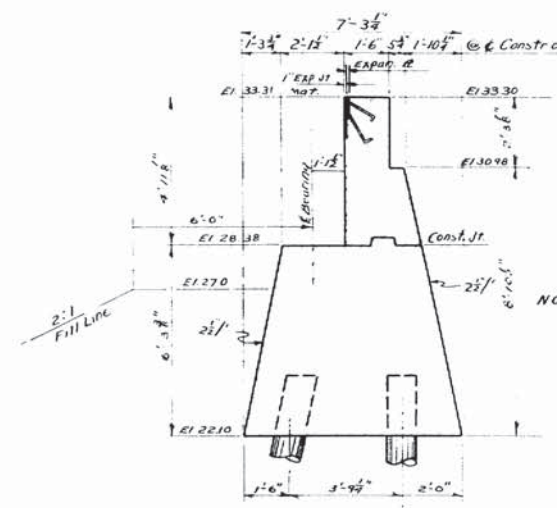
ELEVATION

PLAN ABUTMENT No. 2

ELEVATION

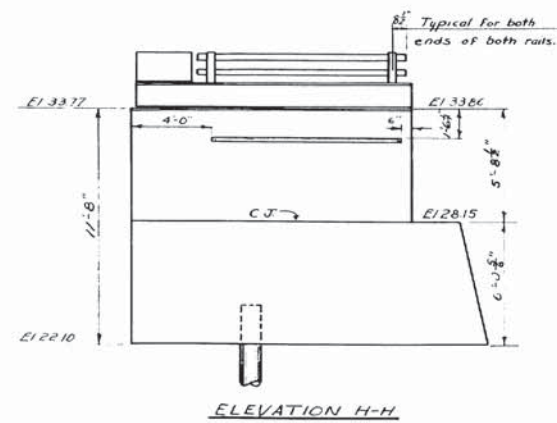


Pavement for concrete in Approach Slabs, sidewalk slab and sidewalk curb to be made under Item 701-40

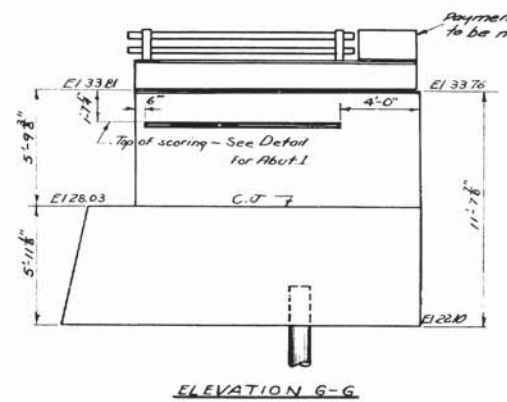


NOTE: Cover back of construction joints with 2 layers of heavy roofing 16" wide bonded together and to concrete with a suitable grade of roofing cement. Access area to be covered if

Notes
Details not shown are the same as for Abut. 1
All reinforcing steel for Abut. 2, is the same as for Abut. 1.

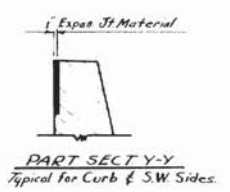


ELEVATION H-H



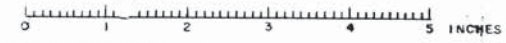
ELEVATION G-G

Fill under abutment to be carried to elevation of bottom of footing before driving piles.

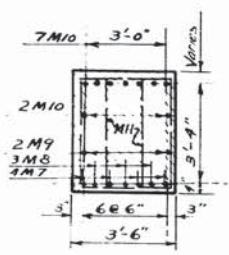


PART SECT Y-Y
Typical for Curb & S.W. Sides

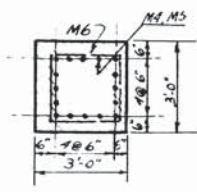
DESIGN - HAMILTON	BRIDGE NO.
TRACE - GARDNER, DET. - C.S.A.	SURVEY -
CHECK - MCP	PLOT -
STATE HIGHWAY COMMISSION BRIDGE DIVISION	
TUKEYS BRIDGE	
OVER	
BACK COVE	
IN THE CITY OF	
PORTLAND	
CUMBERLAND COUNTY	
OVERPASS NO. 2	
ABUTMENT NO. 2	
SHEET 105 OF 166	AUGUSTA, MAINE
	OCT. 1957



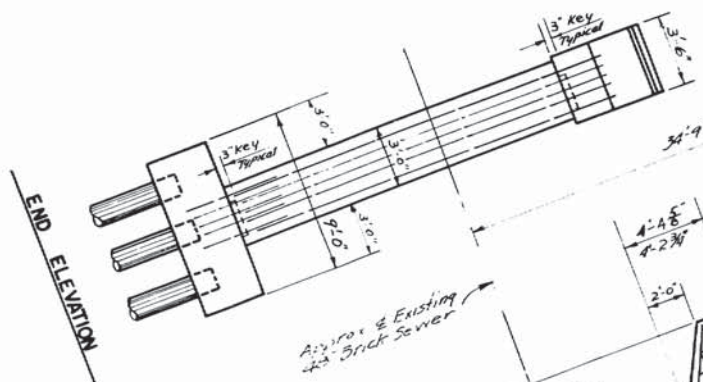
S.P.R. REG. NO.	STATE	PROJECT NUMBER	SHEET NO.	TOTAL SHEETS
1	MAINE	106-144	106	166



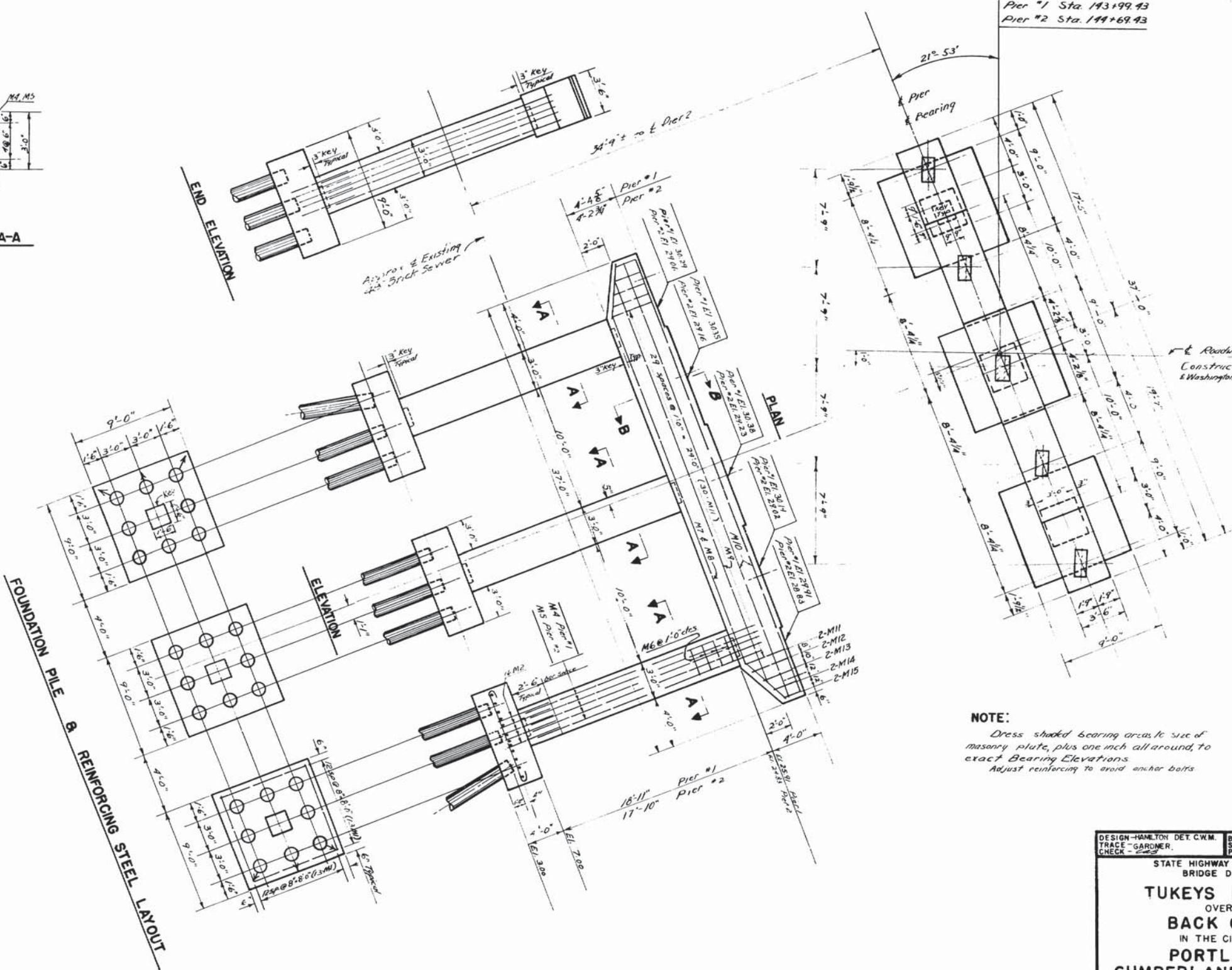
SECTION B-B



SECTION A-A



END ELEVATION



PLAN

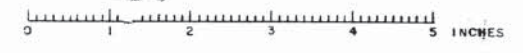
ELEVATION

FOUNDATION PILE & REINFORCING STEEL LAYOUT

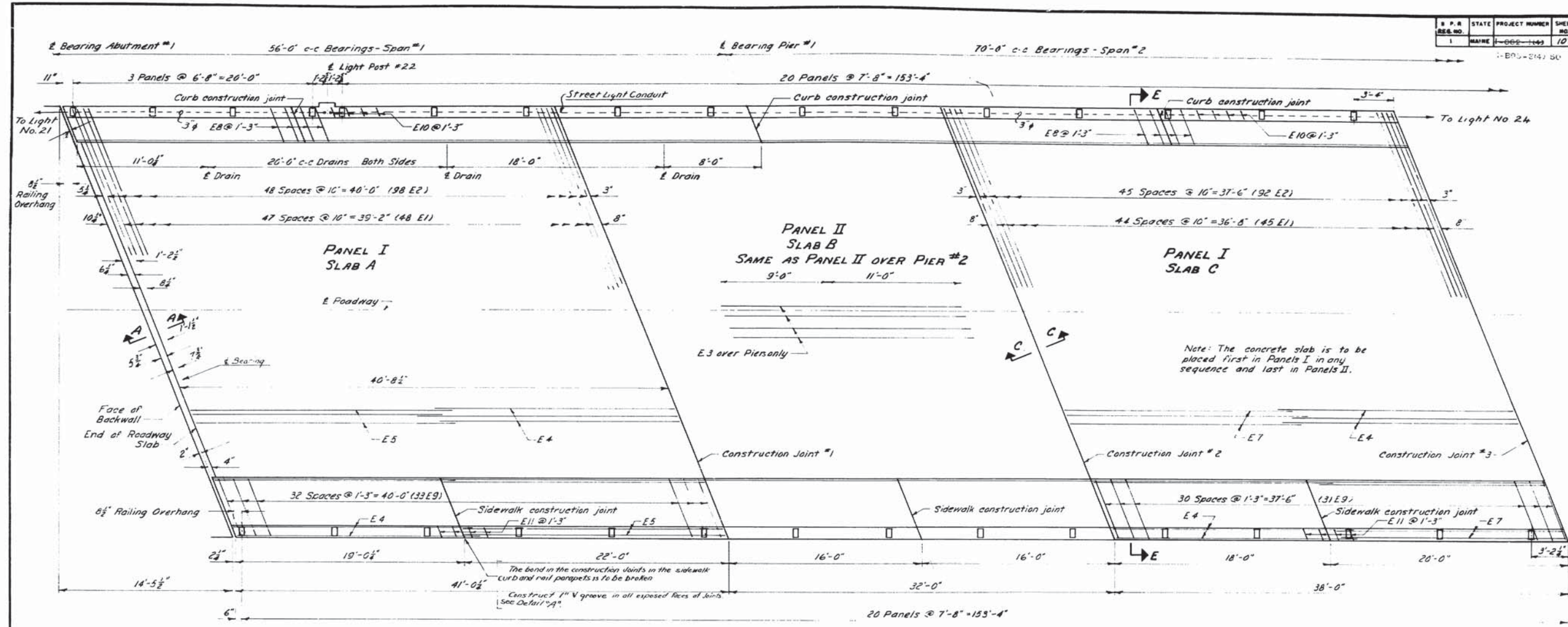
FOUNDATION PILES
 12" diameter Cast in Place Concrete Piles
 Pier #1 - 24 req'd Est. length = 0'
 Pier #2 - 24 req'd Est. length = 20'
 Allowable Pile load - 24 Tons.
 Piles shown thus \odot to be battered 2" per foot in the direction indicated by the arrow.

NOTE:
 Dress shaded bearing areas to size of masonry plate, plus one inch all around, to exact Bearing Elevations.
 Adjust reinforcing to avoid anchor bolts.

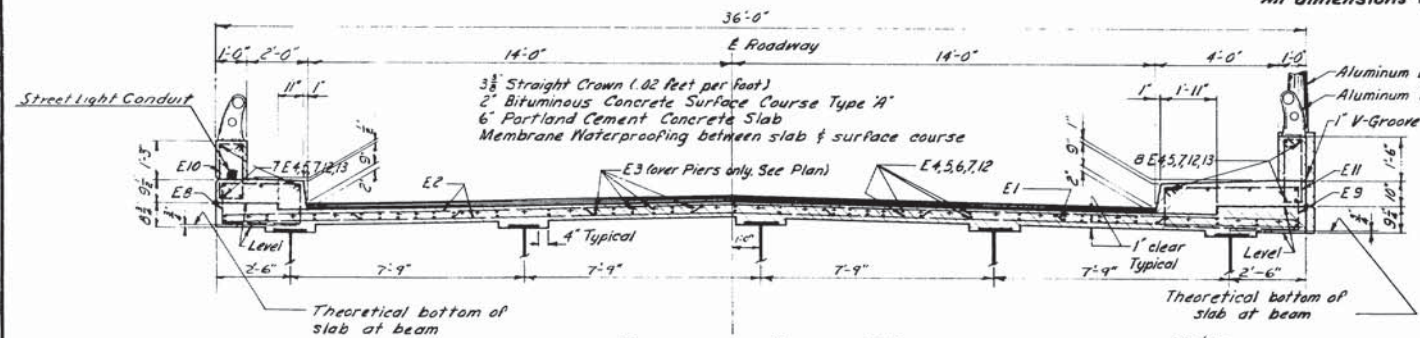
DESIGN - HAMILTON DET. C.W.M.	BRIDGE NO. SURVEY PLOT -
TRACE - GARDNER	
CHECK -	
STATE HIGHWAY COMMISSION BRIDGE DIVISION	
TUKEYS BRIDGE	
OVER BACK COVE	
IN THE CITY OF PORTLAND	
CUMBERLAND COUNTY	
OVERPASS NO. 2 PIERS 1&2	
SHEET 106 OF 166	AUGUSTA, MAINE OCT. 1957



STATE	PROJECT NUMBER	SHEET NO.	TOTAL SHEETS
MAINE	100-149	107	166



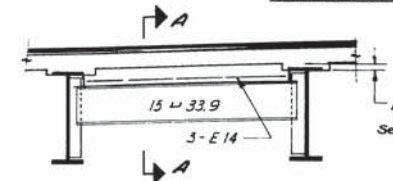
PLAN
All dimensions are measured horizontally.



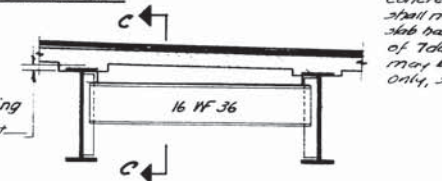
TRANSVERSE SECTION E-E



DETAIL A
1" V Groove at all exposed joints

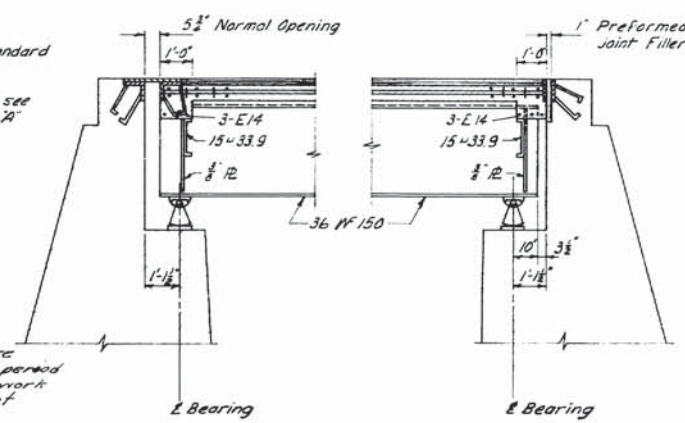


DIAPHRAGM AT ABUTMENTS



DIAPHRAGM AT CONSTRUCTION JOINTS

Note - Concrete for curband sidewalk shall not be placed until superstructure slab has been in place for a minimum period of 7 days. During this period form work may be placed, but hand equipment only, shall be allowed on the slab.



SECTION A-A
Expansion Dam at Abutment #1
For details see sheet #110

SECTION B-B
Armored joint at Abutment #2
For details see sheet #110

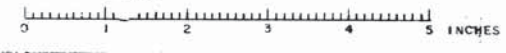
SECTION C-C
at construction joints

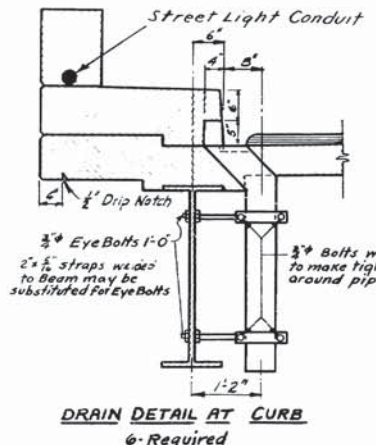
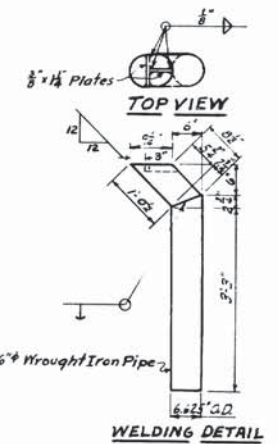
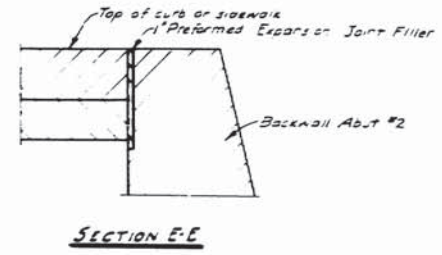
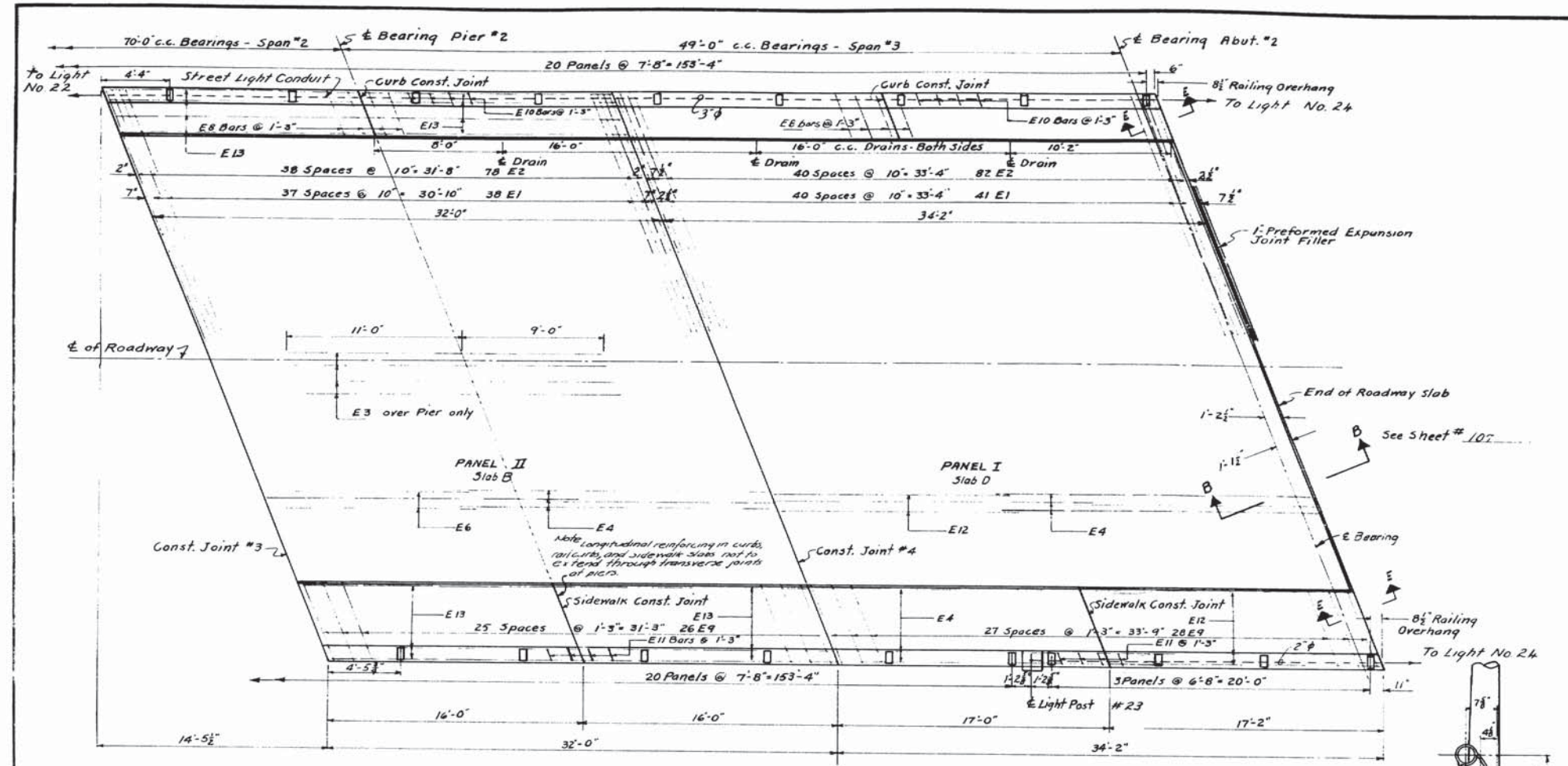
DESIGN - MCDUGAL, DET-PHC
TRACE - AJL
CHECK - 27

BRIDGE NO. SURVEY PLOT

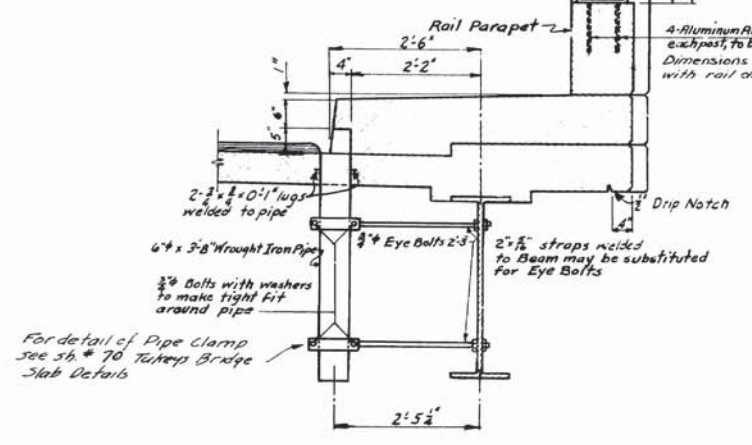
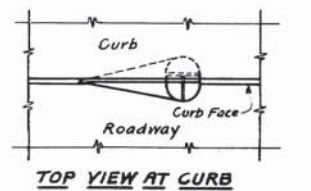
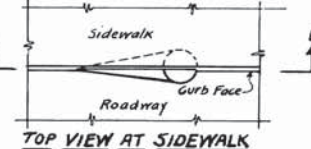
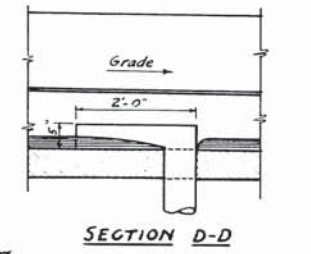
STATE HIGHWAY COMMISSION
BRIDGE DIVISION
TUKEYS BRIDGE
OVER
BACK COVE
IN THE CITY OF
PORTLAND
CUMBERLAND COUNTY
OVERPASS NO. 2
SUPERSTRUCTURE SLAB

SHEET 107 OF 166 AUGUSTA, MAINE OCT. 1957

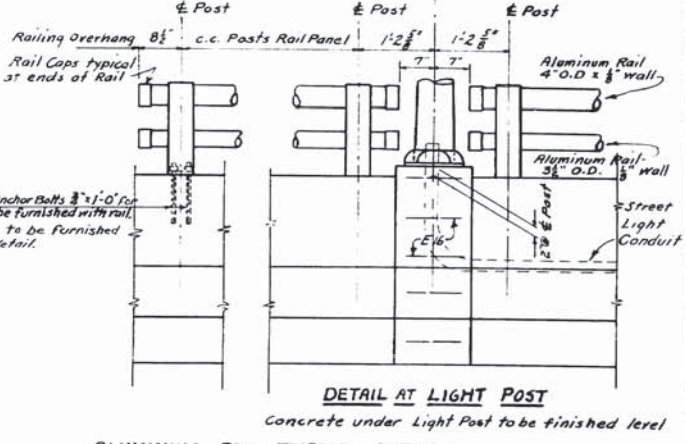




NOTE: Furnishing and Erection of Wrought Iron Pipe Drains to be paid for as Structural Steel under Items 702-103 D & 702-104 D

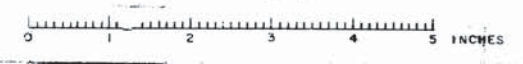


For detail of Pipe Clamp see sb # 70 Turnpike Bridge Slab Details

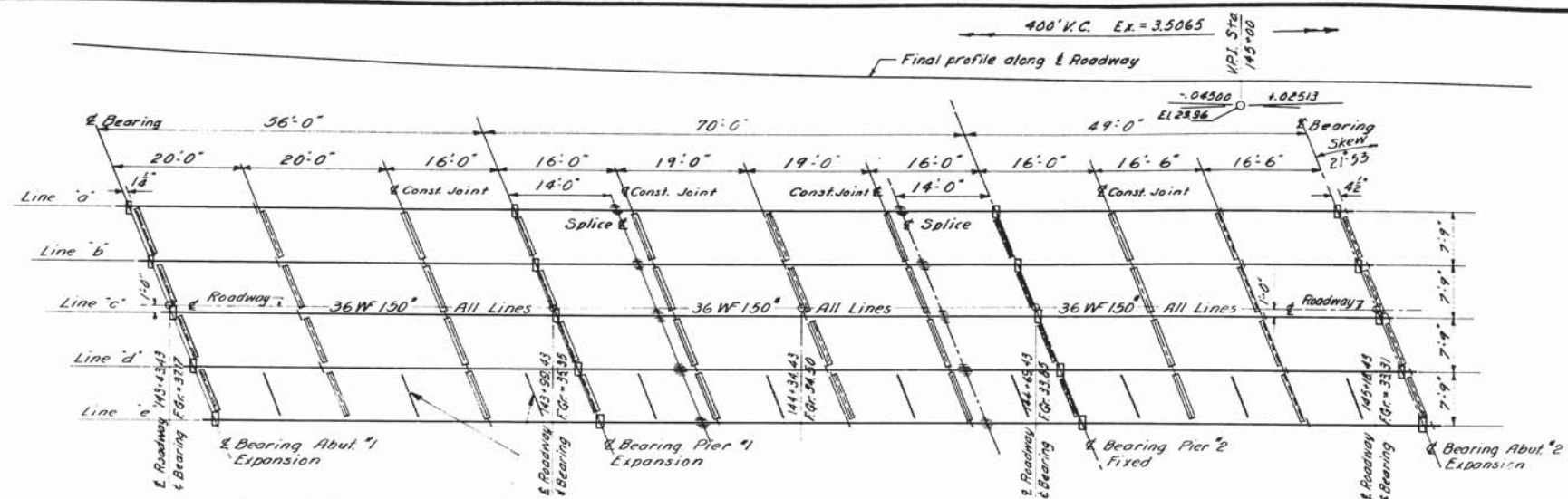


Rail dimensions shown are typical except as shown elsewhere. All rail dimensions shown on these plans are horizontal. Rails to be parallel to grade. Substitutions may be made provided they are approved by the Engineer. For further details of aluminum rail and posts see sb # 120

DESIGN - MCDUGAL-WENTZEL	BRIDGE NO.
TRACE - WELCH	SURVEY PLOT
CHECK - GAZUL	
STATE HIGHWAY COMMISSION BRIDGE DIVISION	
TUKEYS BRIDGE	
OVER	
BACK COVE	
IN THE CITY OF	
PORTLAND	
CUMBERLAND COUNTY	
OVERPASS NO. 2	
SUPERSTRUCTURE SLAB	
SHEET 108 OF 166	AUGUSTA, MAINE
	OCT. 1957



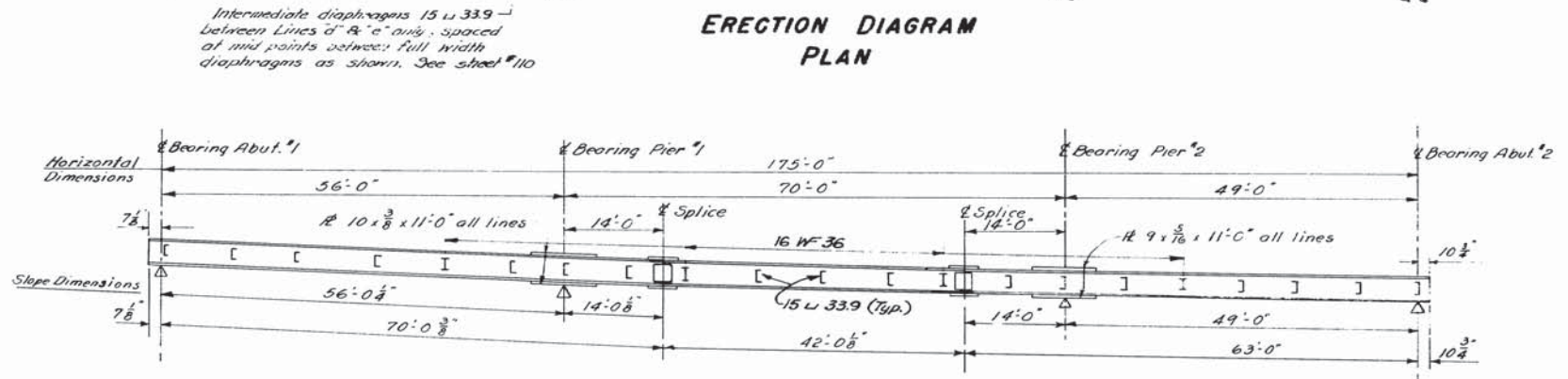
D.P.R.	STATE	PROJECT NUMBER	SHEET NO.	TOTAL SHEETS
1	MAINE	109	109	166



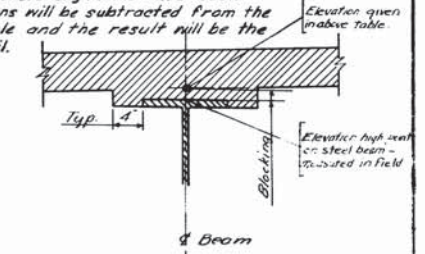
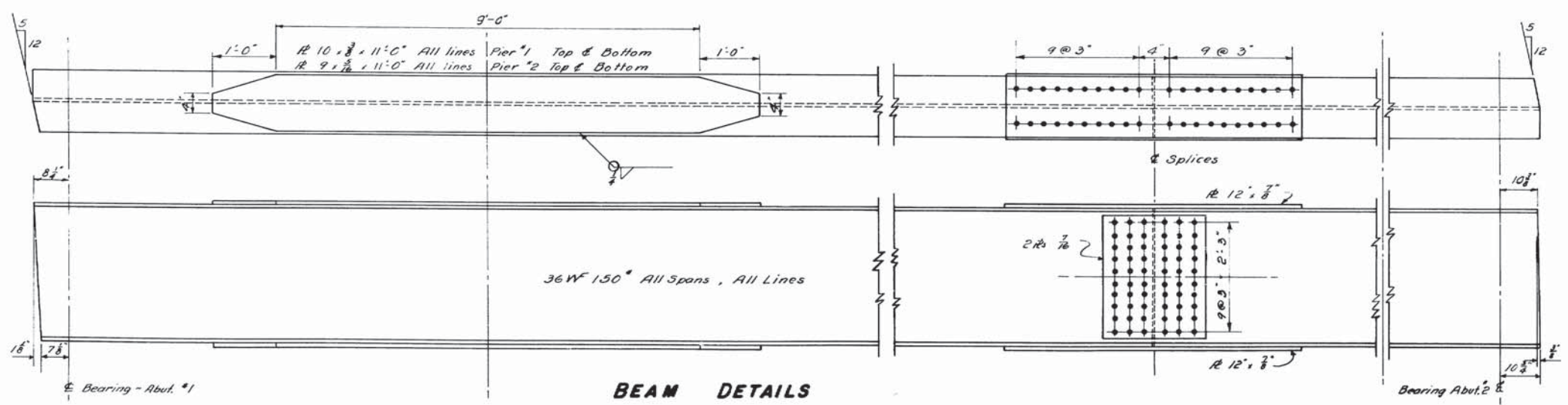
SPECIFICATIONS
 Design & Detail: A.A.S.H.O. 1953.
 Fabrication & Erection: State of Maine, State Highway Comm. Standard Specifications 1956.
 Loading: H20-516-44. As Modified for Interstate Highways.
 Field Connections:
 1/2" holes unless otherwise indicated.
 7/8" rivets or high tensile bolts.
 Materials: Girders and Coverplates to be Structural weldable steel, A.S.T.M. Designation A373.

ELEV. TO BOTTOM OF ROADWAY SLAB

Point	Dist. from E Bearing Abut. #1	Line "a"	Line "b"	Line "c"	Line "d"	Line "e"
0'		36.43	36.47	36.47	36.20	35.93
7'		36.17	36.21	36.22	35.95	35.69
14'		35.93	35.97	35.98	35.72	35.46
21'		35.69	35.73	35.73	35.48	35.22
28'		35.46	35.50	35.52	35.26	35.01
35'		35.21	35.26	35.28	35.04	34.78
42'		34.99	35.04	35.07	34.81	34.57
49'		34.76	34.82	34.85	34.60	34.36
56'		34.56	34.62	34.65	34.41	34.18
63'		34.37	34.43	34.47	34.23	34.00
70'		34.20	34.26	34.31	34.06	33.84
77'		34.02	34.09	34.14	33.91	33.69
84'		33.87	33.94	33.99	33.76	33.55
91'		33.70	33.78	33.83	33.61	33.39
98'		33.55	33.64	33.69	33.47	33.26
105'		33.39	33.48	33.54	33.32	33.12
112'		33.25	33.34	33.41	33.19	32.99
119'		33.11	33.21	33.27	33.06	32.87
126'		32.99	33.09	33.16	32.95	32.76
133'		32.87	32.98	33.05	32.85	32.64
140'		32.78	32.88	32.96	32.76	32.58
147'		32.69	32.80	32.88	32.69	32.50
154'		32.61	32.72	32.81	32.62	32.44
161'		32.53	32.65	32.72	32.55	32.38
168'		32.46	32.58	32.67	32.49	32.32
175'		32.39	32.52	32.62	32.45	32.27



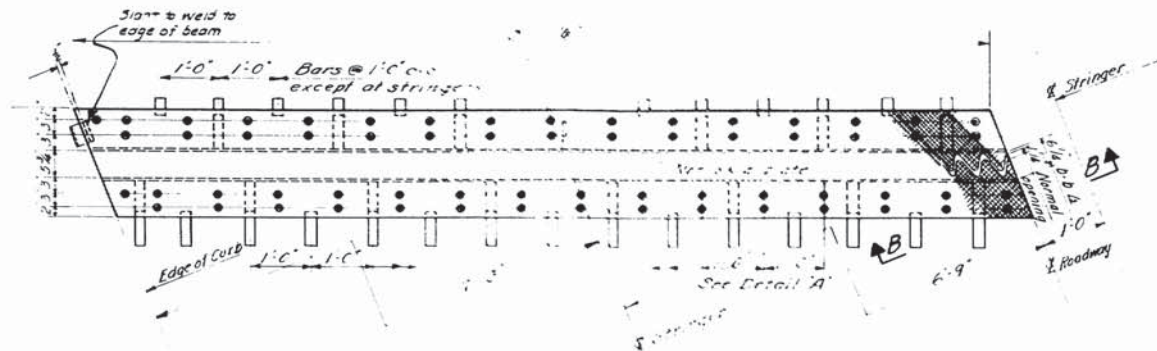
NOTE: In order to compensate for the vertical curve, dead load deflection and any irregularities in the rolling of the steel, elevations will be taken at the above points after the erection of the steel but before any forms have been constructed. These elevations will be subtracted from the elevations given in the table and the result will be the blocking. See Blocking Detail.



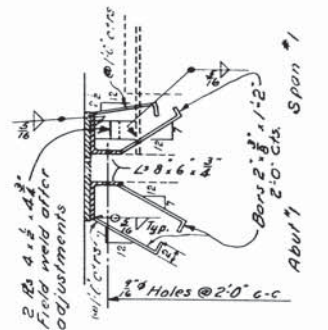
BLOCKING DETAIL
 Blocking is measured from the top of the cover plate or beam which ever the case may be.
 Blocking for all beams is:
 @ E Bearing Abut. #1 - 2"
 @ E Bearing Pier #1 - 1 1/2"
 @ E Bearing Pier #2 - 1 1/2"

DESIGN - MCDUGAL
 TRACE - SAVAGE
 CHECK - [Signature]
 BRIDGE NO. SURVEY PLOT
 STATE HIGHWAY COMMISSION
 BRIDGE DIVISION
TUKEYS BRIDGE
 OVER
BACK COVE
 IN THE CITY OF
PORTLAND
CUMBERLAND COUNTY
 OVERPASS NO. 2
 STRUCTURAL STEEL
 SHEET 109 OF 166 AUGUSTA, MAINE OCT. 1957

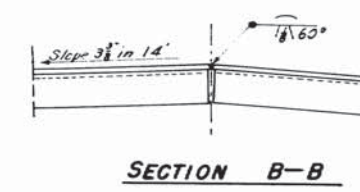
Revised 10/15/58 Loading changed from H20-44 to H20-516-44 AS MODIFIED FOR INTERSTATE HIGHWAYS



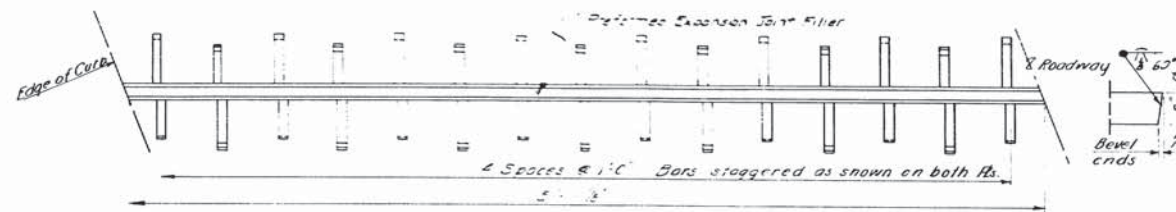
HALF PLAN ROADWAY EXPANSION PLATE ABUT. NO. 1
Opposite Half Similar



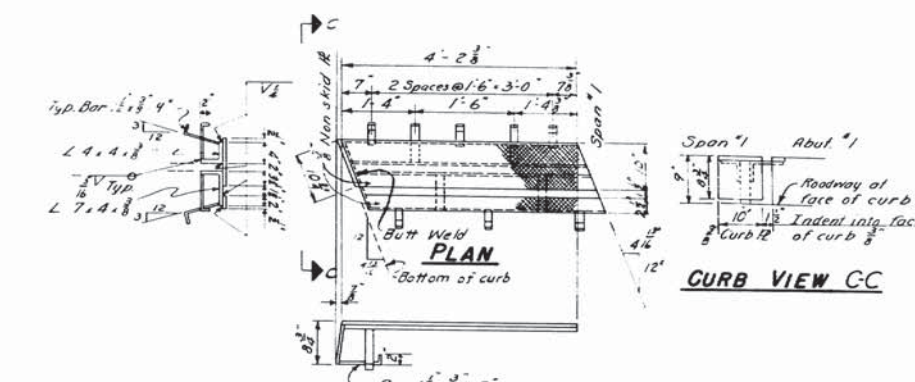
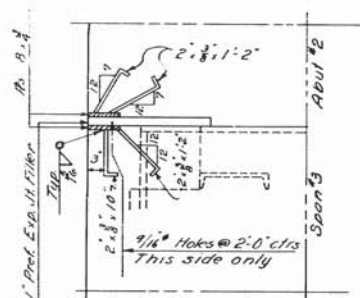
DETAIL A



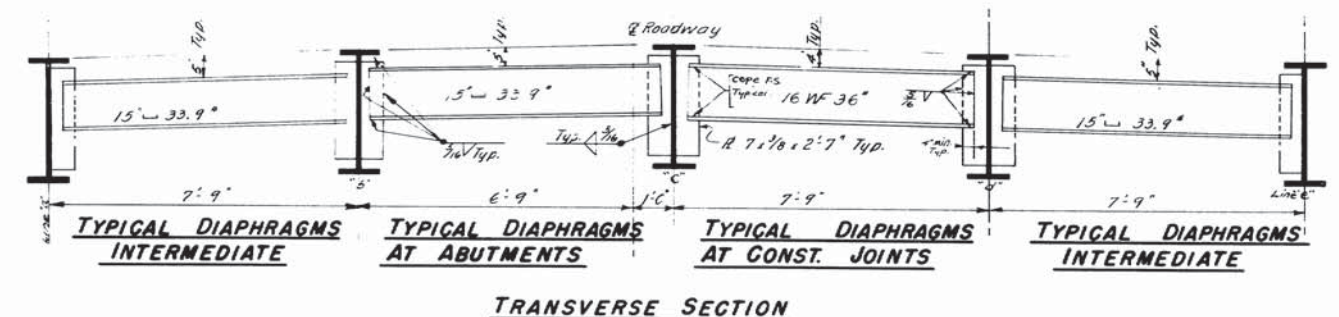
SECTION B-B



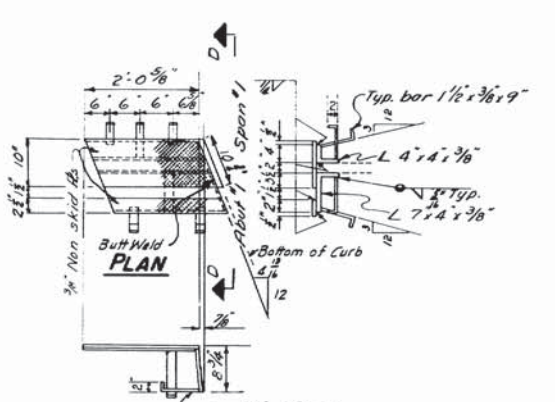
HALF PLAN ROADWAY ARMORED JOINT ABUT. NO. 2
Opposite Half Similar



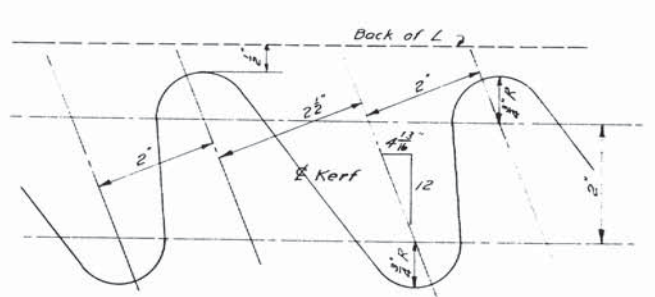
CURB VIEW CC



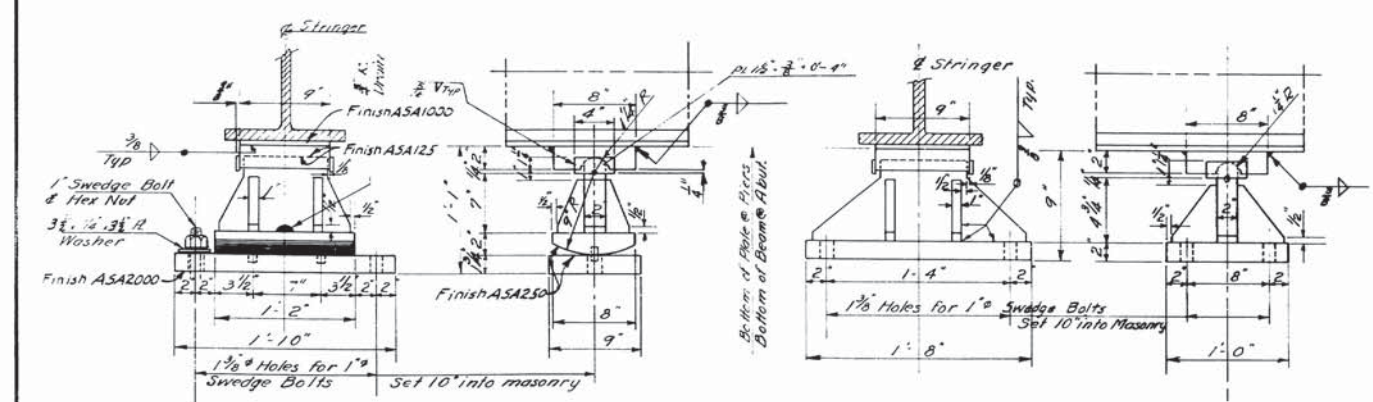
TRANSVERSE SECTION



ELEVATION



CUTTING DIAGRAM



EXPANSION 15 Reqd. **BEARING PEDESTALS** **FIXED** 5 Reqd.

CURB EXPANSION PLATE ABUTMENT NO. 1

DESIGN - MCDUGAL	BRIDGE NO.
TRACE - SAVAGE	BRIDGE DIVISION
CHECK - [Signature]	PLOT -
STATE HIGHWAY COMMISSION	
BRIDGE DIVISION	
TUKEYS BRIDGE	
OVER	
BACK COVE	
IN THE CITY OF	
PORTLAND	
CUMBERLAND COUNTY	
OVERPASS NO. 2	
STRUCTURAL STEEL	
SHEET 110 OF 166	AUGUSTA, MAINE OCT. 1937.