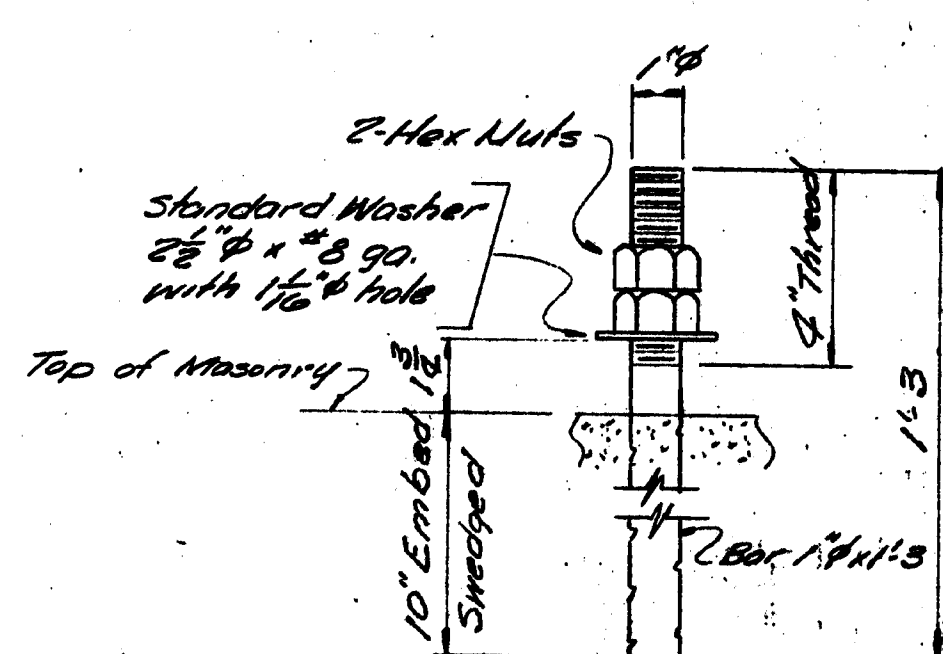


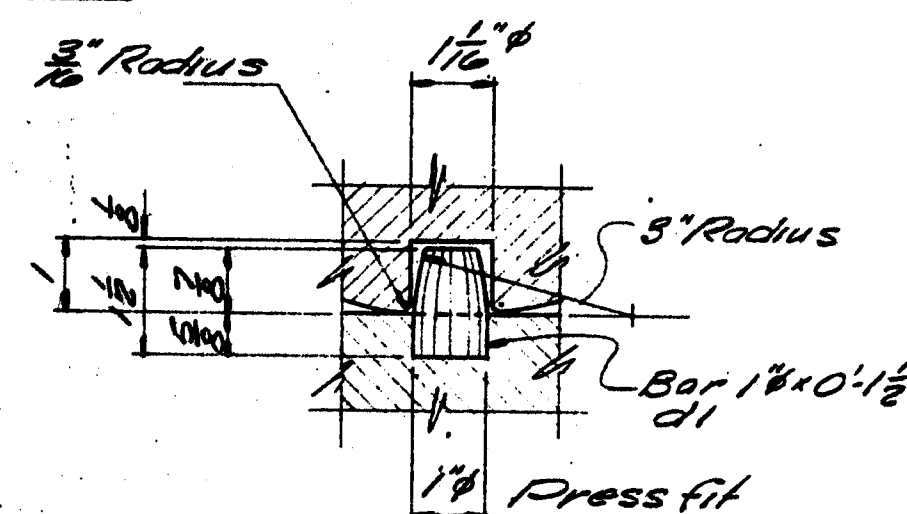
EXPANSION PEDESTAL EPC-3

16 REQD.

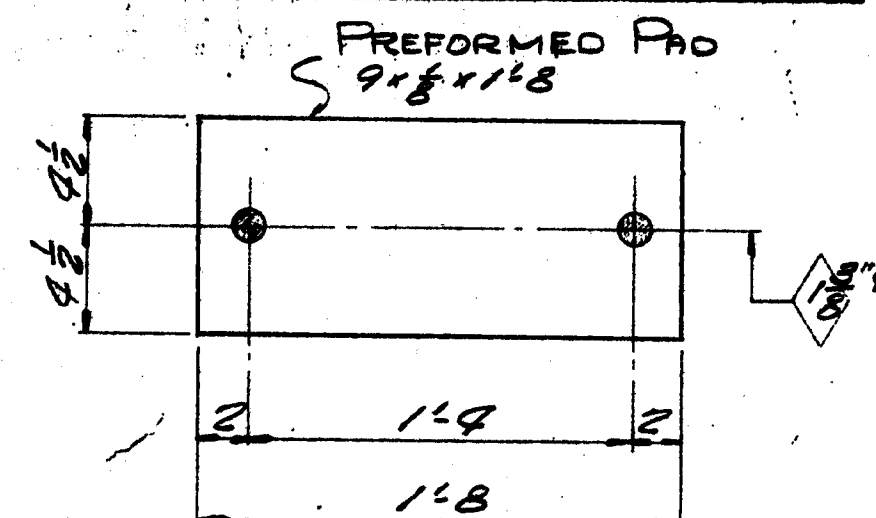


ANCHOR BOLT ABI

32 REQD.



DOWEL DETAIL



PREFORMED PAD

FPI 16 REQD.

PAINT NOTE:

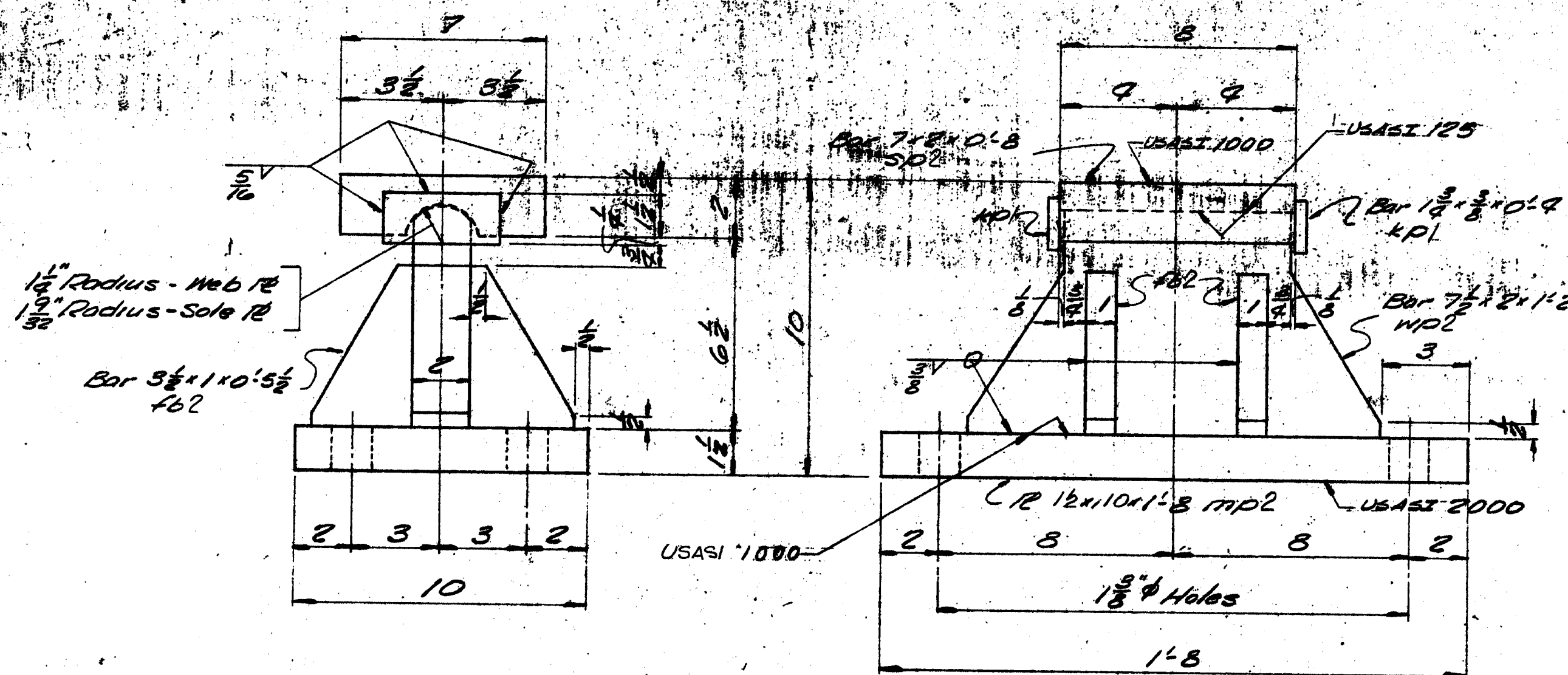
No paint on top of sole plates "30" and 1" down from top on sides, coat with boiled linseed oil.
No paint on surface with USASI 125 finish, coat with mixture of white lead and yellow.
No paint on Anchor Bolts - Oil lube.
Masonry re's & bearing surfaces at expansion bearing rollers shall receive 2 coats of same paint.

SHIP BILL OF MATERIAL						JOB NO. 872-228 DWG. NO. 51-1	
MARK	NO.	MARK	SHAPE	LENGTH	WT.	REMARKS	REV.
EPC-3	16		EXPANSION PEDESTAL ASSY.				
MPI	16		1 1/2 x 9	18			2
	16	MD	PL 2 x 6	10			2
	16	MD	1 1/2 x 9 1/4	0 11			2
SPI	16		Bar 7 x 8	0 8			3
	64	FCI	Bar 2 1/2 x 1	0 7 1/2			3
	32	d1	Bar 1 1/4	0 1 1/2			3
	32	401	Bar 1 3/4 x 3/8	0 9			2
ABI	32		Bar 1 1/2	1 3		Swaged	3
	64	shop	1" Hex Nut				3
Field	32		1" washer			Std. Washer 2 1/2" O.D. x 1/8" hole.	3
					</		

Cust 11-28-72 2p
STATE 8-1-72 6p
SHOP 8-1-72 4p
F.A. 7-14-72 2p
CK'D 7-11-72 DWL

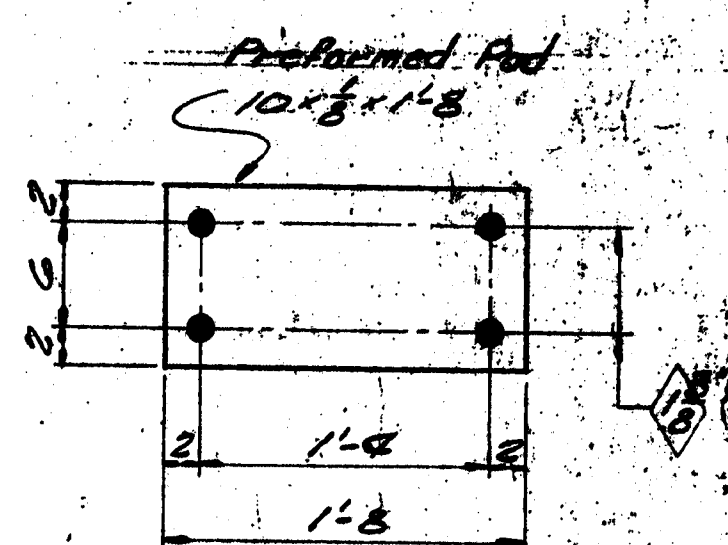
DRAWN 7-5-72 T.V.B.
REVISION
REVISION
REVISION

140-29 P.M. REV.



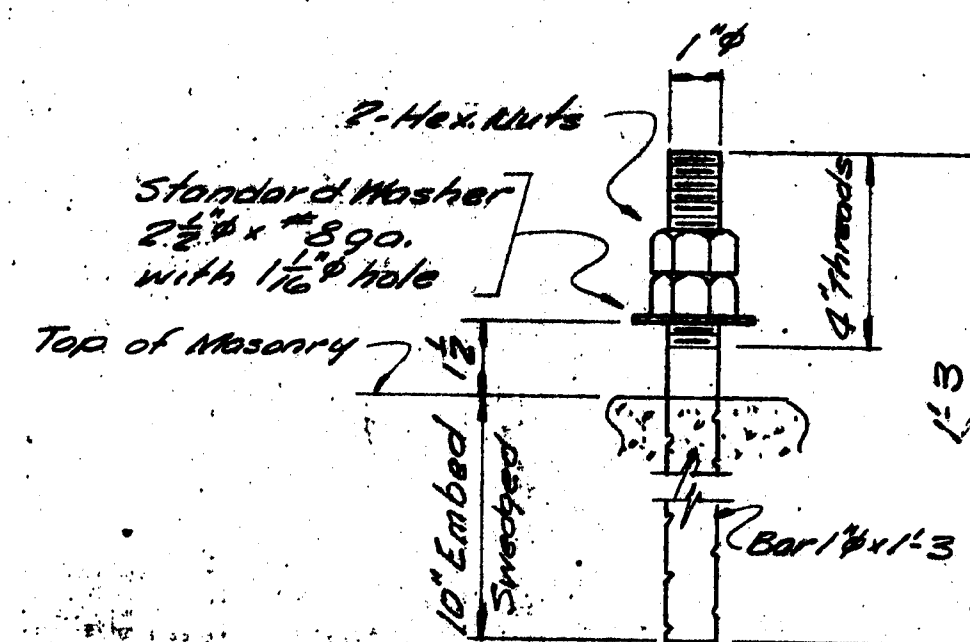
FIXED PEDESTAL FPC-2

16 REQ'D



PREFORMED PAD

FP2 - 16 REQ'D



ANCHOR BOLT ABI

64 REQ'D

PAINT NOTE:

No paint on top of sole plates "sp" and 1" down from top on sides, coat with boiled linseed oil.
No paint on surface of sole plates, coat with mixture of white lead and tallow.
No paint on anchor bolts - oil them.

BILL OF MATERIAL						
MARK	NO.	MARK	SHAPE	LENGTH	WT.	REMARKS
FIXED PEDESTAL ASSY.						
10	MDL	12x10	1	8		
16	MDL	Bar 7x2	1	2		
32	KPL	Bar 7x2	0	2		
32	KPL	Bar 1/2x2	0	2		
64	KPL	Bar 3/8x1	0	5 1/2		
ABI						
64	Bar 1" dia	1	3			Swaged
128	shop 1" dia					
128	shop 1" dia					std washer 2 1/2" o.d. x 3/8" with 1/2" hole
16	10x8	1	8			Preformed Pad Reg. # 3323

Bearing material to be ASTM A36, Anchor bolts to be A36. SEE WELDING PROCEDURES. SHOP CONNECTIONS: WELDED. FIELD CONNECTIONS: BOLTED. HOLES: As noted. PAINT: RED LEAD AS PER MAINE SPEC, and as noted.

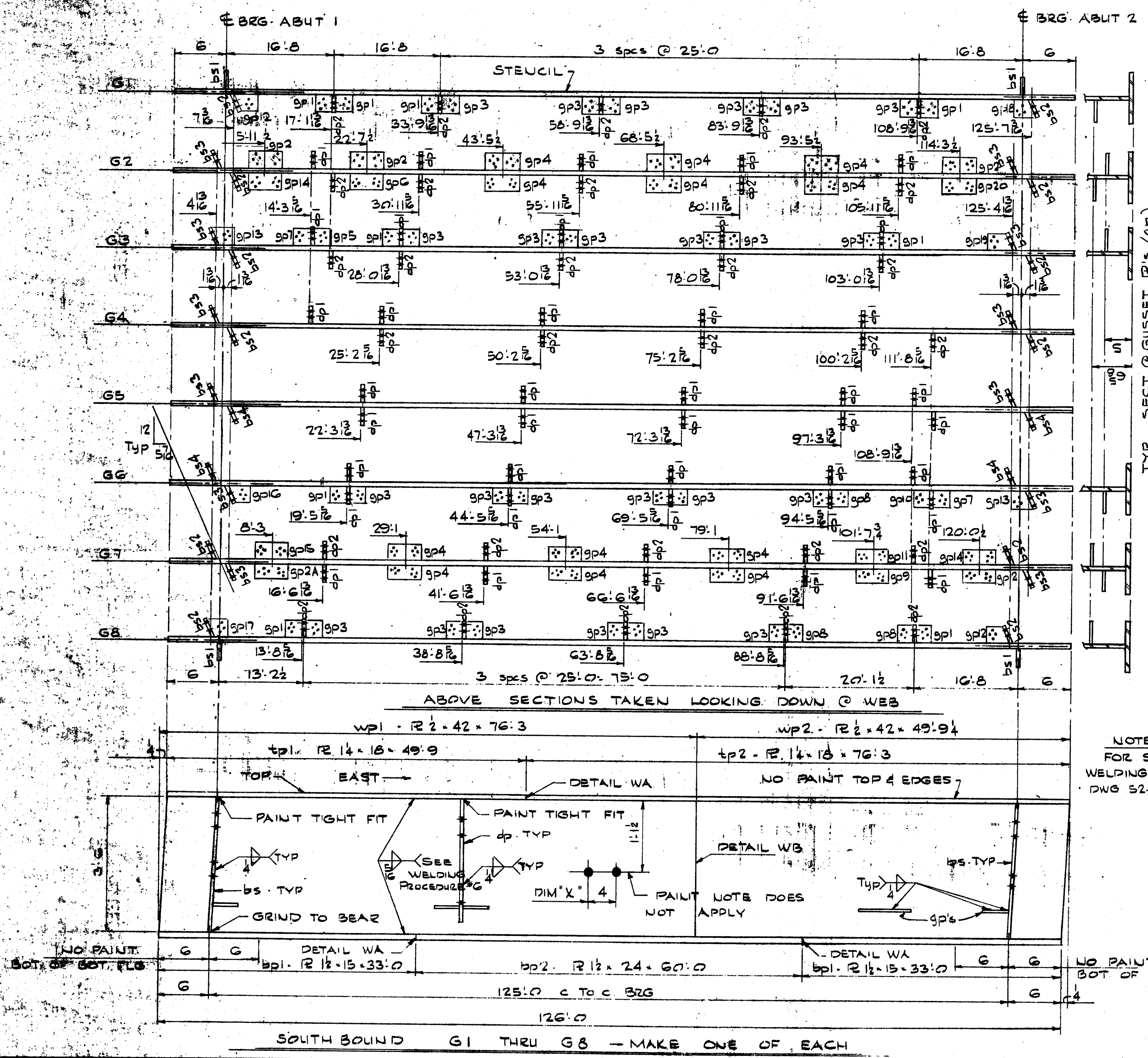
BEARING PEDESTAL DETAIL

Cust 11-28-72 2p
STATE 8-1-72 6p
SHOP 8-1-72 4p
F.A. 7-14-72 2p
CK'D 7-11-72 DWL

DRAWN 7-5-72 TJP
REVISION
REVISION
REVISION

Bancroft & Martin Inc.
South Portland 7, Maine
1-295 OVER FOREST AVE.
PORTLAND, MAINE
CUSTOMER BLUE ROCK INDUSTRIES
DESIGNER M.S. MC BRIDGE DIV.
JOB NO. 872-228 DWG. NO. 51-2

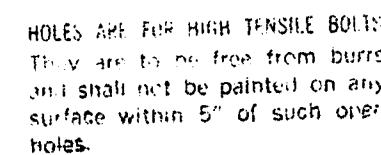
140-30 P. MIN. REV.

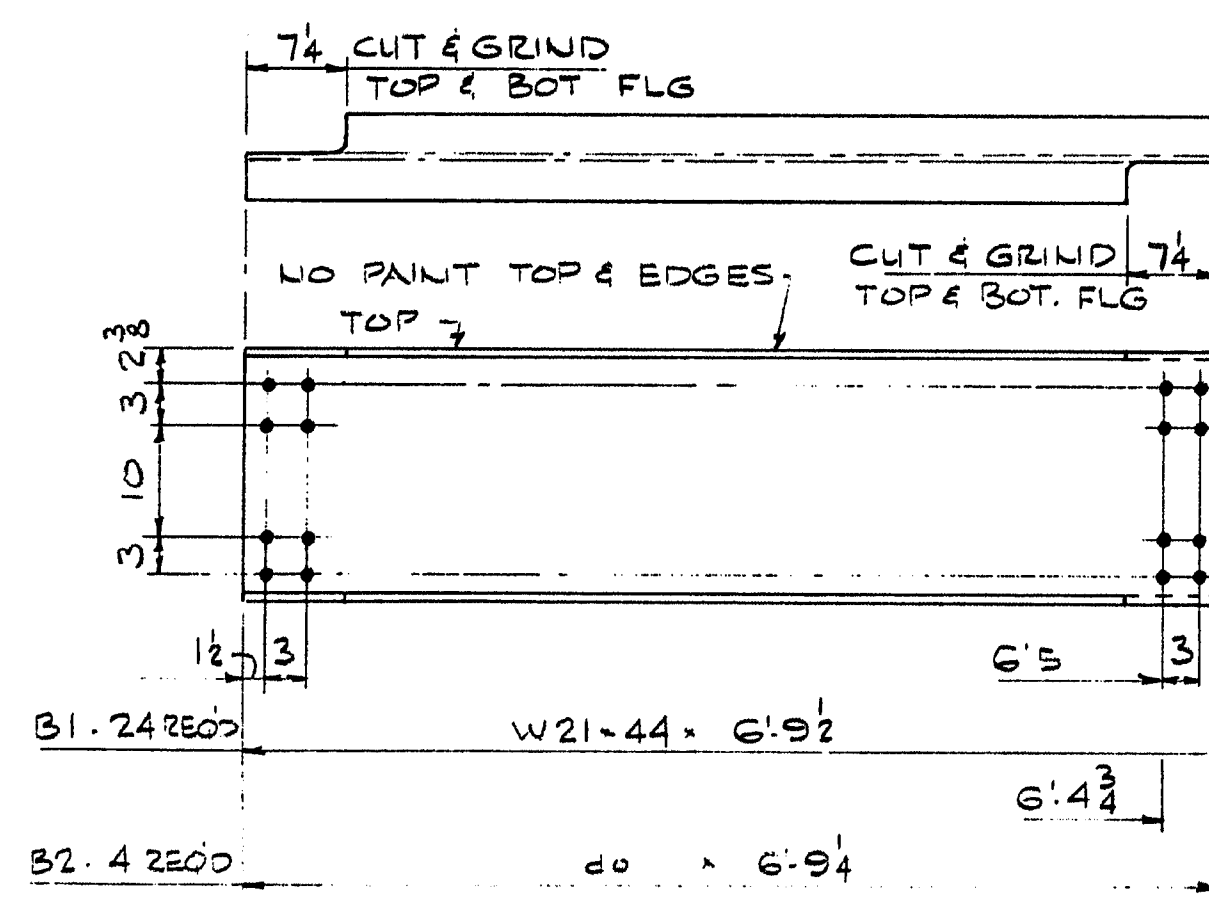


GIRDER	GIRDER
G1	G8
DIM "X"	DIM "X"
2'-0"	1'-6"
7'-0"	5'-6"
12'-0"	9'-6"
17'-0"	13'-6"
21'-2"	18'-6"
25'-4"	23'-6"
29'-6"	28'-6"
33'-8"	33'-6"
38'-8"	38'-6"
43'-8"	43'-6"
48'-8"	48'-6"
53'-8"	53'-6"
58'-8"	58'-6"
63'-8"	63'-6"
68'-8"	68'-6"
73'-8"	73'-6"
78'-8"	78'-6"
83'-8"	83'-6"
88'-8"	88'-6"
93'-8"	93'-6"
98'-8"	98'-6"
103'-8"	103'-6"
108'-8"	108'-6"
113'-8"	113'-6"
117'-10"	118'-8"
122'-6"	123'-8"

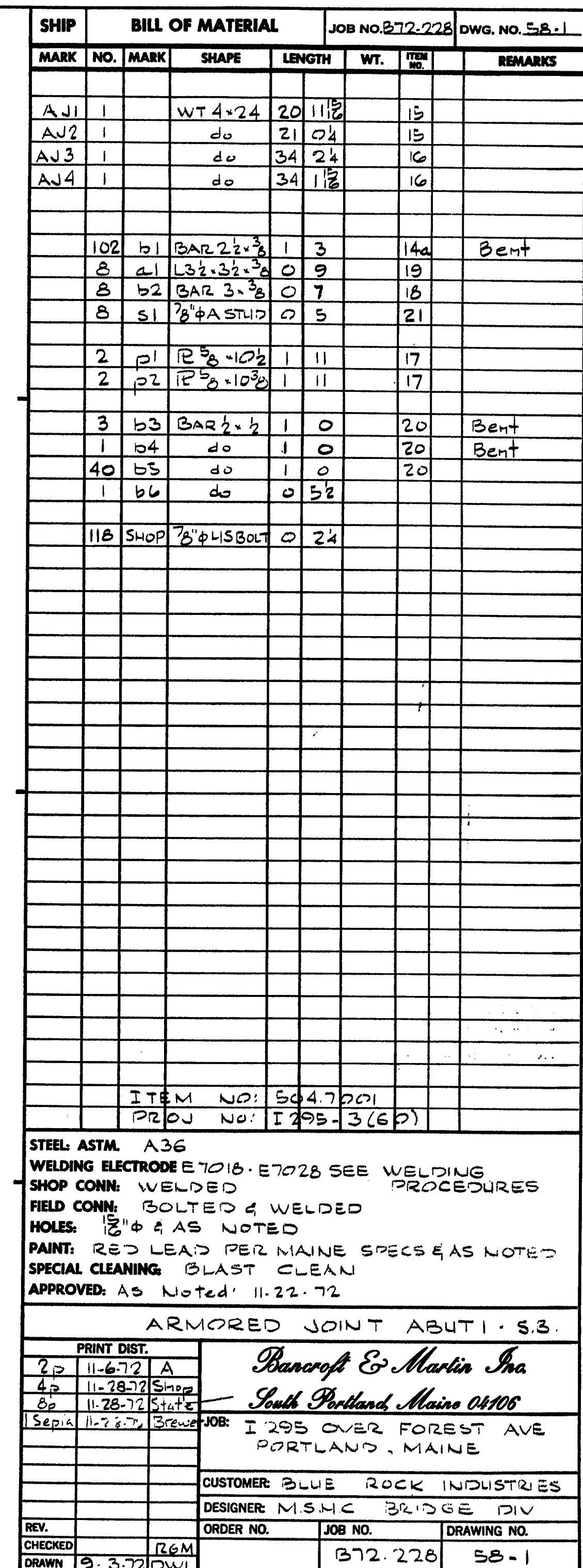
NOTE:
FOR STIFFENERS, CAMBER,
WELDING & GUSSETS, SEE
DWG 52-3

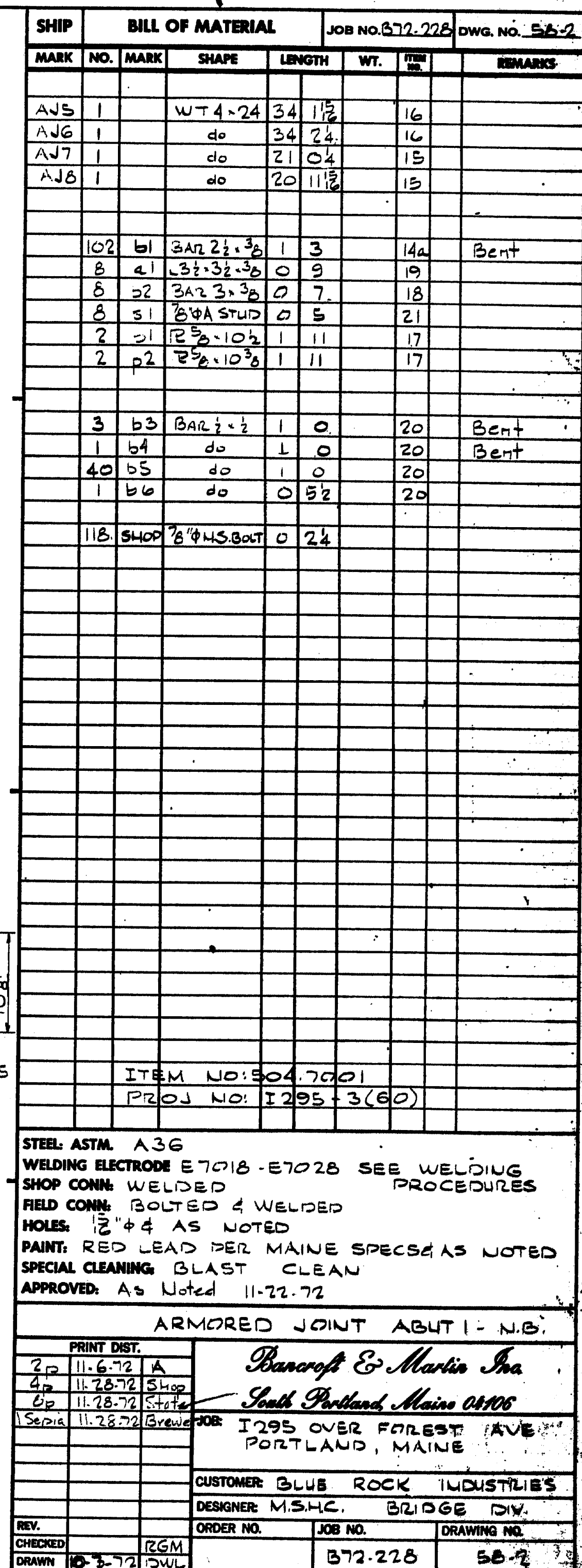
SHIP		BILL OF MATERIAL		JOB NO 372-228		DWG. NO 52-1	
MARK	NO.	MARK	SHAPE	LENGTH	WT.	REMARKS	
G1	1		GIRDER	126' 0"	0		
G2	1		do	126' 0"	0		
G3	1		do	126' 0"	0		
G4	1		do	126' 0"	0		
G5	1		do	126' 0"	0		
G6	1		do	126' 0"	0		
G7	1		do	126' 0"	0		
G8	1		do	126' 0"	0		
8	wp1		R 2 x 42	76' 3"	3		
8	wp2		do	49' 9"	2		
8	tp1		R 14 x 18	49' 9"	3		
8	tp2		do	76' 3"	3		
16	bp1		R 1 1/2 x 15	33' 0"	4		
8	bp2		R 1 1/2 x 24	60' 0"	6		
4	bs1		BAR 7 x 7	3' 6"	5		
12	bs2		do	3' 6"	5		
12	bs3		do	3' 6"	5		
4	bs4		do	3' 6"	5		
40	dp1		BAR 7 x 3/8	3' 3"	7		
30	dp2		BAR 7 x 3/8	3' 3"	7		
9	gp1		R 3 x 9	1' 0"	8		
4	gp2		do	2' 0"	0		
24	gp3		do	1' 14"	1		
12	gp4		do	2' 22"	2		
1	gp5		R 3 x 9	0' 104"	1		
1	gp6		R 3 x 10 1/4	1' 8"	1		
2	gp7		R 3 x 9	1' 1"	1		
3	gp8		do	1' 0"	0		
1	gp9		do	2' 0"	0		
1	gp10		R 3 x 9	0' 104"	1		
1	gp11		do	1' 104"	1		
2	gp12		R 3 x 10 1/4	1' 1"	1		
2	gp13		R 3 x 11	1' 0"	1		
2	gp14		R 3 x 12	1' 8"	1		
1	gp15		R 3 x 10 1/4	2' 1"	1		
1	gp16		do	1' 1"	1		
1	gp17		R 3 x 11	1' 0"	1		
1	gp18		R 3 x 9	1' 3"	1		
1	gp19		do	1' 3"	1		
1	gp20		do	2' 3"	0		
1	gp21		R 3 x 11	1' 9"	8		
1	gp22		do	1' 8"	8		
STEEL: ASTM A372 GRADE 50 & A36 AS NOTED							
WELDING ELECTRODE E7018 E7016 E7028 SEE							
SHOP CONN: WELDED WELDING PROCEDURES							
FIELD CONN: BOLTED ITEM NO: 5047001							
HOURS: 12"4 PROJ. NO: I 295-3 (GO)							
PAINT: ZED LEAD PER MAINE SPECS AS NOTED							
SPECIAL CLEANING: BLAST CLEAN							
APPROVED: AS NOTED 10-8-72							
S. B. GIRDERS G1 THRU G8							
PRINT DIST. 2d 9-22-72 FA							
1 Sep 10-11-72 Brewer							
8 Sep 10-11-72 State							
1 Sep 10-19-72 Brewer							
2 Sep 11-28-72 Cus							
Barcroft & Martin Inc							
South Portland Maine 04106							
JOB: I 295 OVER FOREST AVE							
PORTLAND, MAINE							
CUSTOMER: BLUE ROCK INDUSTRIES							
DESIGNER: MSHC. BRIDGE DIV.							
REV. 10-16-72 DWL							
CHECKED: RGM							
DRAWN: 7-25-72 DWL							
ORDER NO. 372-228							
JOB NO. 372-228							
DRAWING NO. 52-1							

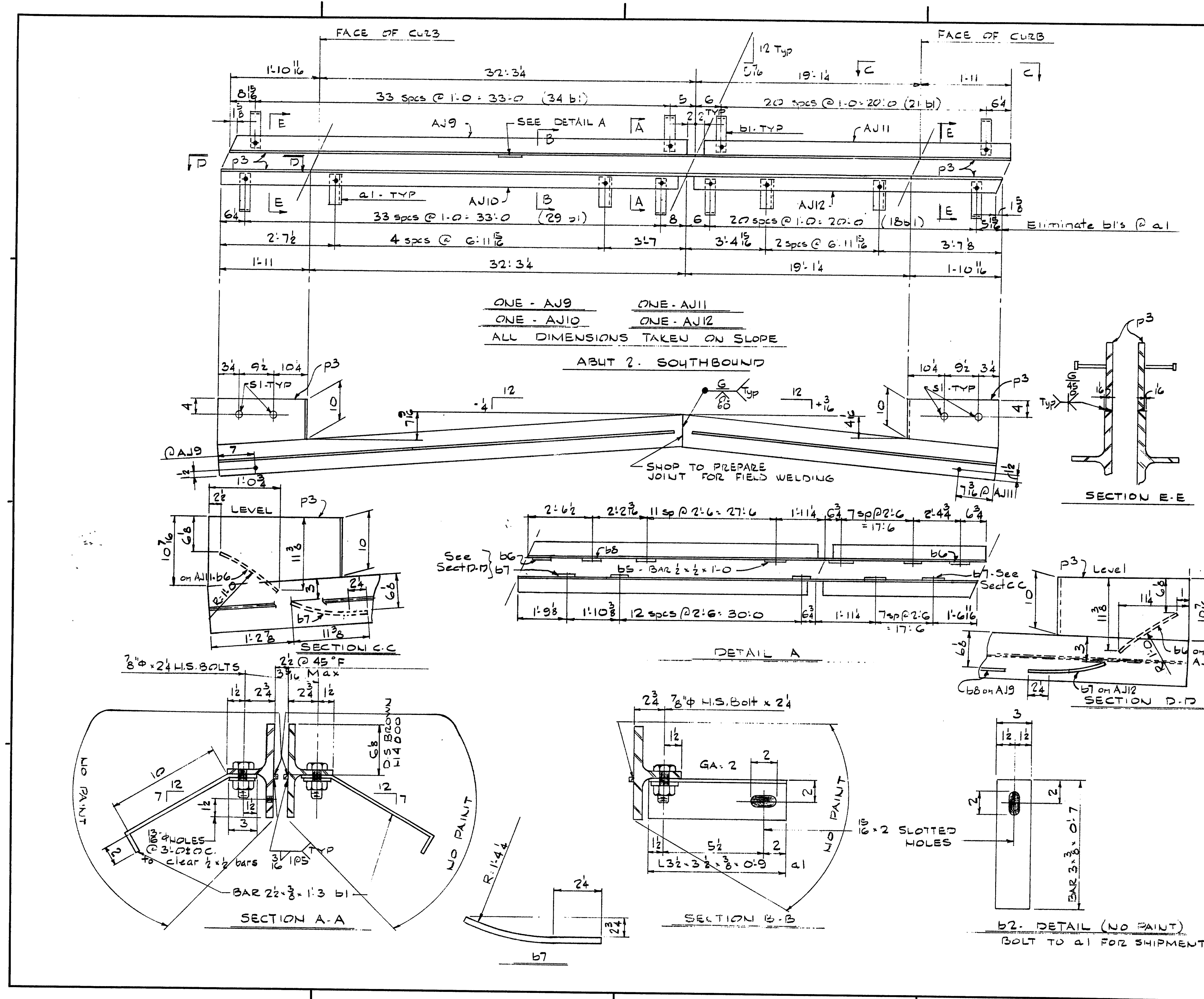




140-34







SHIP		BILL OF MATERIAL			JOB NO. 372-228		DWG. NO. 56-3	
MARK	NO.	MARK	SHAPE	LENGTH	WT.	ITEM NO.	REMARKS	
AJ9	1		WT 4x24	34	15	16		
AJ10	1		do	34	24	16		
AJ11	1		do	21	04	15		
AJ12	1		do	20	11 1/2	15		
	102	b1	3A2 2 1/2 x 3/8	1	3	14a	Bent	
	8	a1	3 1/2 x 3 1/2 x 3/8	0	9	19		
	8	b2	3A2 3 x 3/8	0	6 1/2	18		
	8	s1	5/8 A STUD	0	5	21		
	4	p3	R 2 1/2 x 10 1/2	1	11	17		
	2	b6	3A2 1/2 x 1/2	1	0	20	Bent	
	3	b7	do	1	0	20	Bent	
	41	b5	do	1	0	20		
	1	b8	do	0	4 3/4	20		

