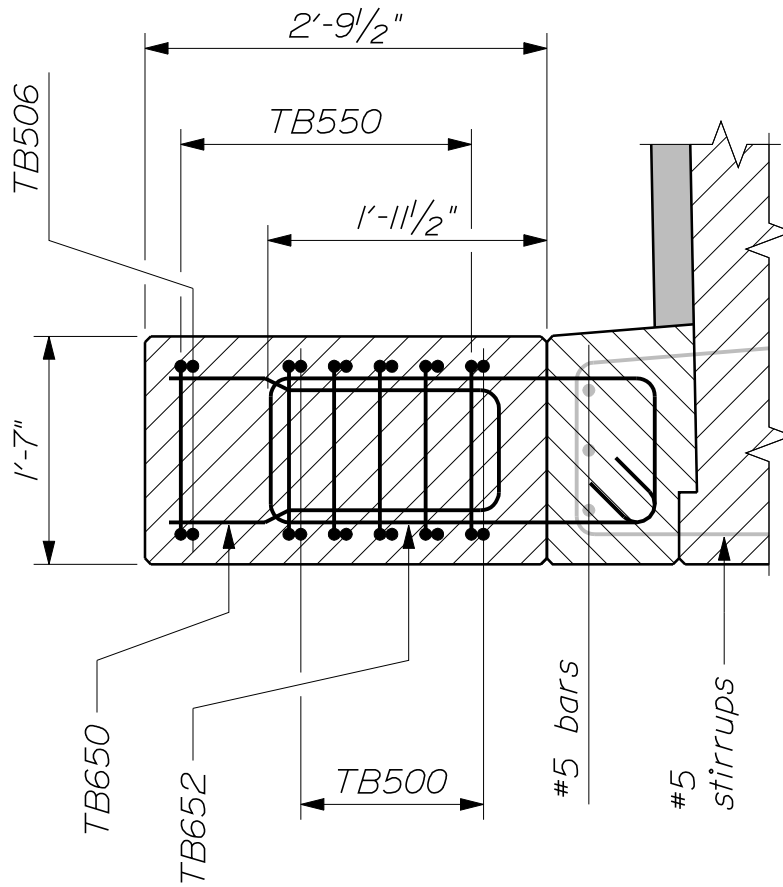
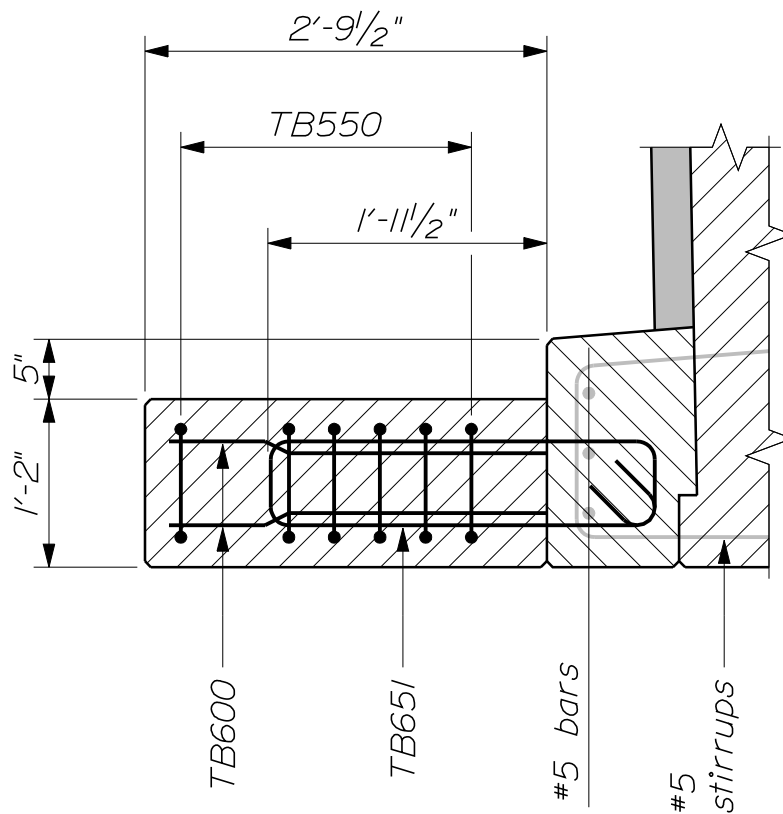


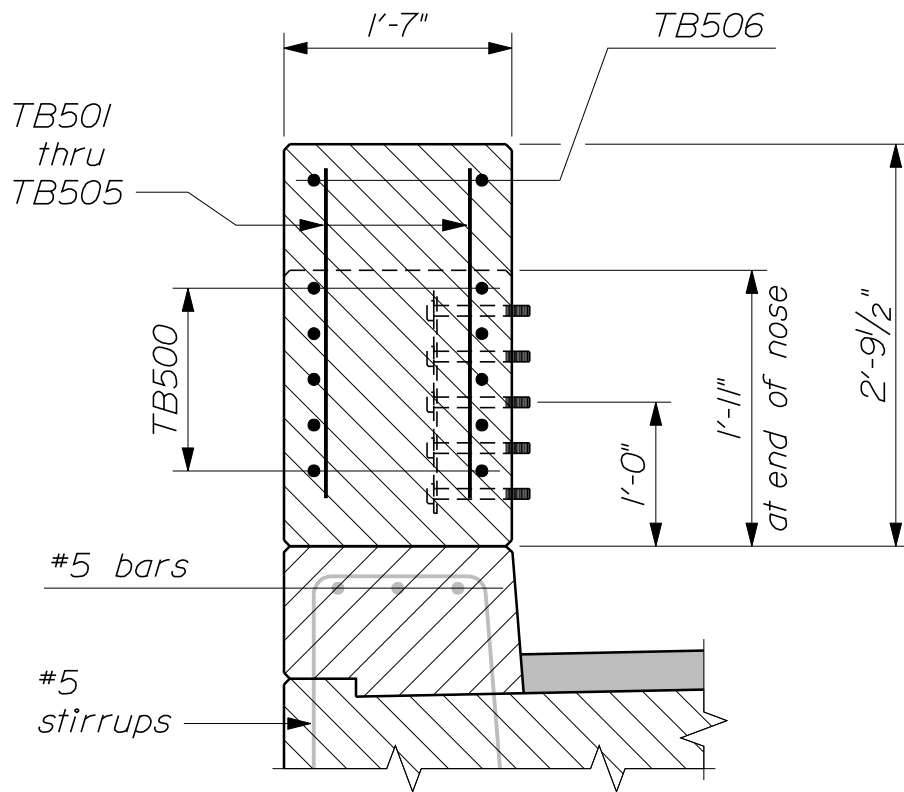
~ TRANSITION BARRIER ELEVATION ~
 (3 - Bar Traffic / Bicycle Railing)



~ SECTION THRU STEM ~
 (3 - Bar Traffic / Bicycle Railing)



~ SECTION THRU RECESS ~
 (3 - Bar Traffic / Bicycle Railing)



~ SECTION THRU NOSE ~
 (3 - Bar Traffic / Bicycle Railing)

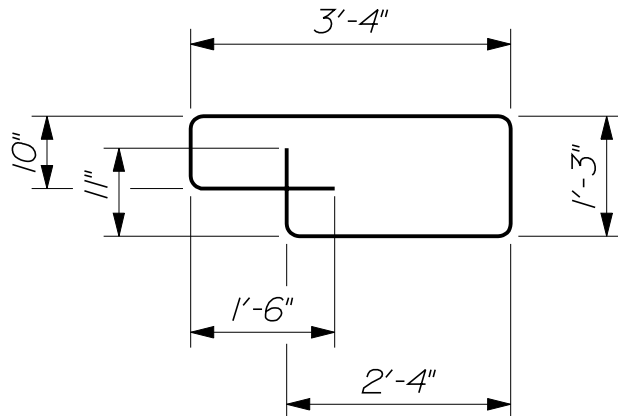
REINFORCING STEEL SCHEDULE

	2 - Bar Traffic		4 - Bar Ped.		3 - Bar Bike		4 - Bar Bike	
	Qty.	Length	Qty.	Length	Qty.	Length	Qty.	Length
TB500	10	4'-6"	12	4'-6"	10	4'-6"	12	4'-6"
TB501	2	1'-8"	2	2'-11"	2	2'-2"	2	3'-2"
TB502	2	1'-7"	2	2'-9"	2	2'-0"	2	2'-10"
TB503	2	1'-7"	2	2'-7"	2	1'-10"	2	2'-6"
TB504	2	1'-6"	2	2'-5"	2	1'-8"	2	2'-2"
TB505	2	1'-6"	2	2'-3"	2	1'-6"	2	1'-10"
TB506	--	--	2	4'-8"	2	4'-8"	2	5'-1"
TB550	5	10'-2"	7	10'-2"	6	10'-2"	7	10'-2"
TB600	--	--	4	3'-4"	4	2'-7"	4	3'-7"
TB650	--	--	5	7'-4"	5	5'-10"	5	7'-10"
TB651	2	7'-11"	2	7'-11"	2	7'-11"	2	7'-11"
TB652	5	8'-9"	5	8'-9"	5	8'-9"	5	8'-9"

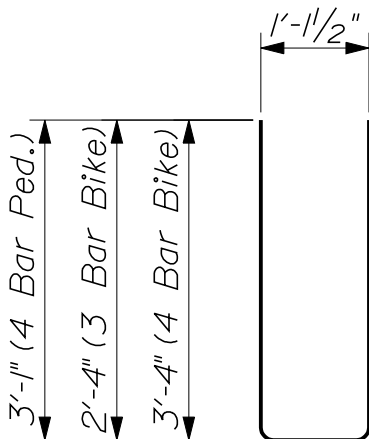
Notes:

The first digit following the letters of the mark indicate the size of the reinforcing bar. (TB500 = bar size #5.) All dimensions are out - to - out of bar.

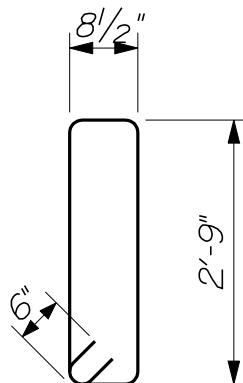
Quantities given are for one Transition Barrier.



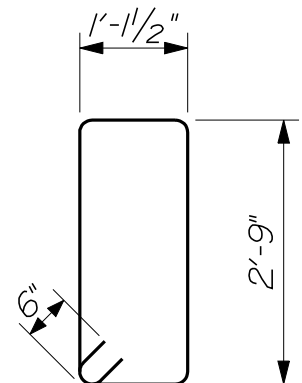
~ TB550 ~



~ TB650 ~



~ TB651 ~



~ TB652 ~