

SPECIFICATIONS

Design: Load and Resistance Factor Design per AASHTO LRFD Bridge Design Specifications, Fifth Edition 2010 and Interim Specifications through 2010.

DESIGN LOADING

Live Load ..... HL - 93 Modified for Strength I

HYDROLOGIC DATA

Drainage Area	1999 sq mi
Design Discharge (Q50)	53,340 cfs
Check Discharge (Q100)	58,250 cfs
Record Flood Discharge (1936)	74,000 cfs
Headwater Elevation (Q50)	623.9 ft
Headwater Elevation (Q100)	625.7 ft
Headwater Elevation (1936)	630.7 ft
Discharge Velocity (Q50)	4.9 fps
Discharge Velocity (Q100)	4.6 fps
Discharge Velocity (1936)	4.2 fps
Headwater Elevation (Q1.1)	613.1 ft
Discharge Velocity (Q1.1)	4.5 fps
Headwater Elevation (Q25)	622.8 ft

UTILITIES

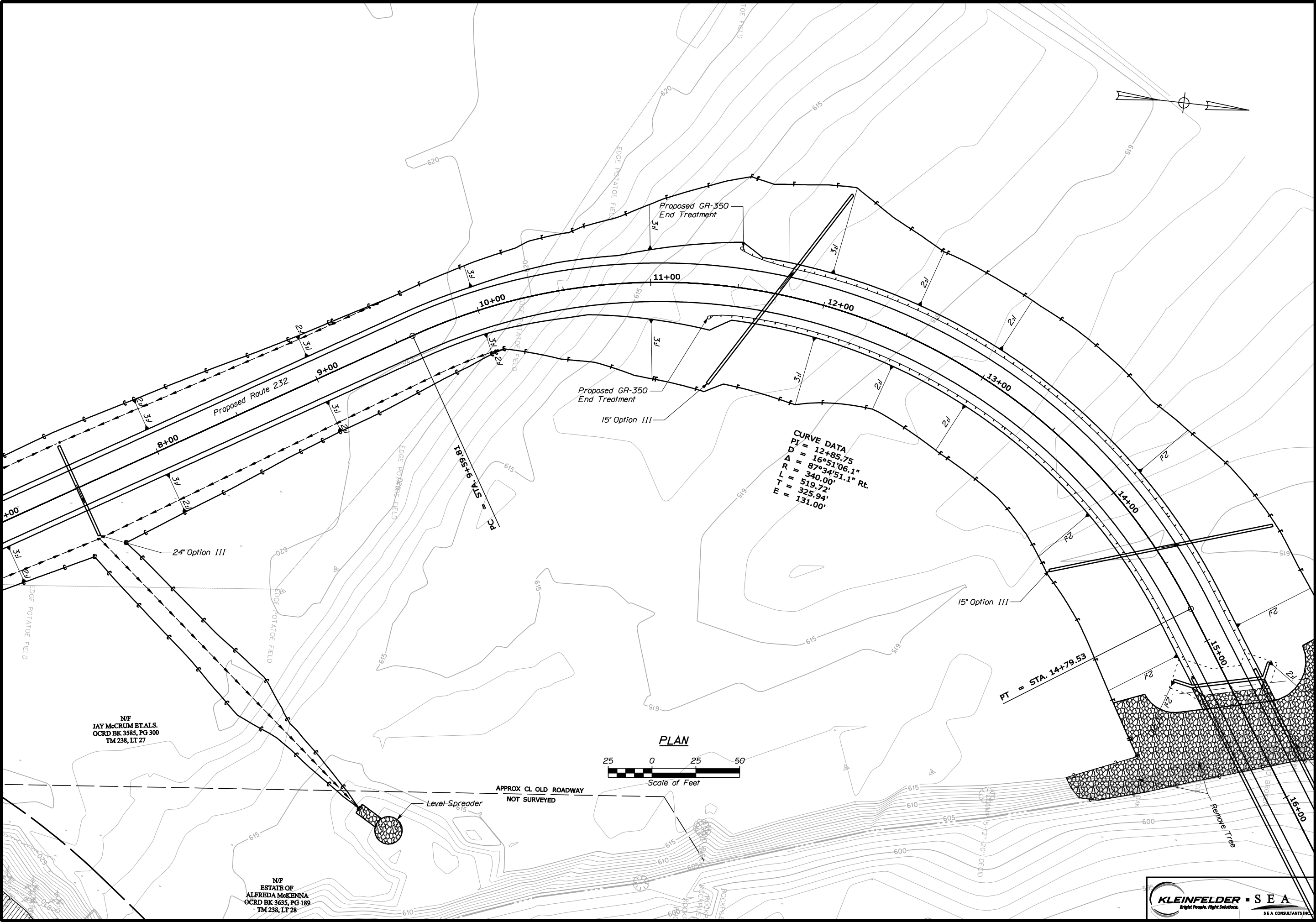
Central Maine Power Company  
Oxford West Telephone Company  
Rumford Mexico Sewerage District

MAINTENANCE OF TRAFFIC

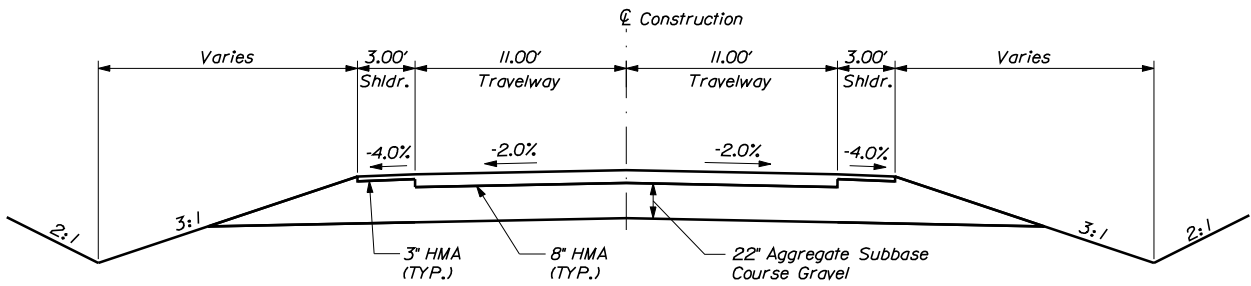
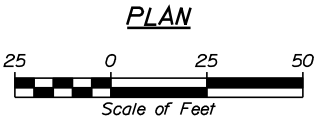
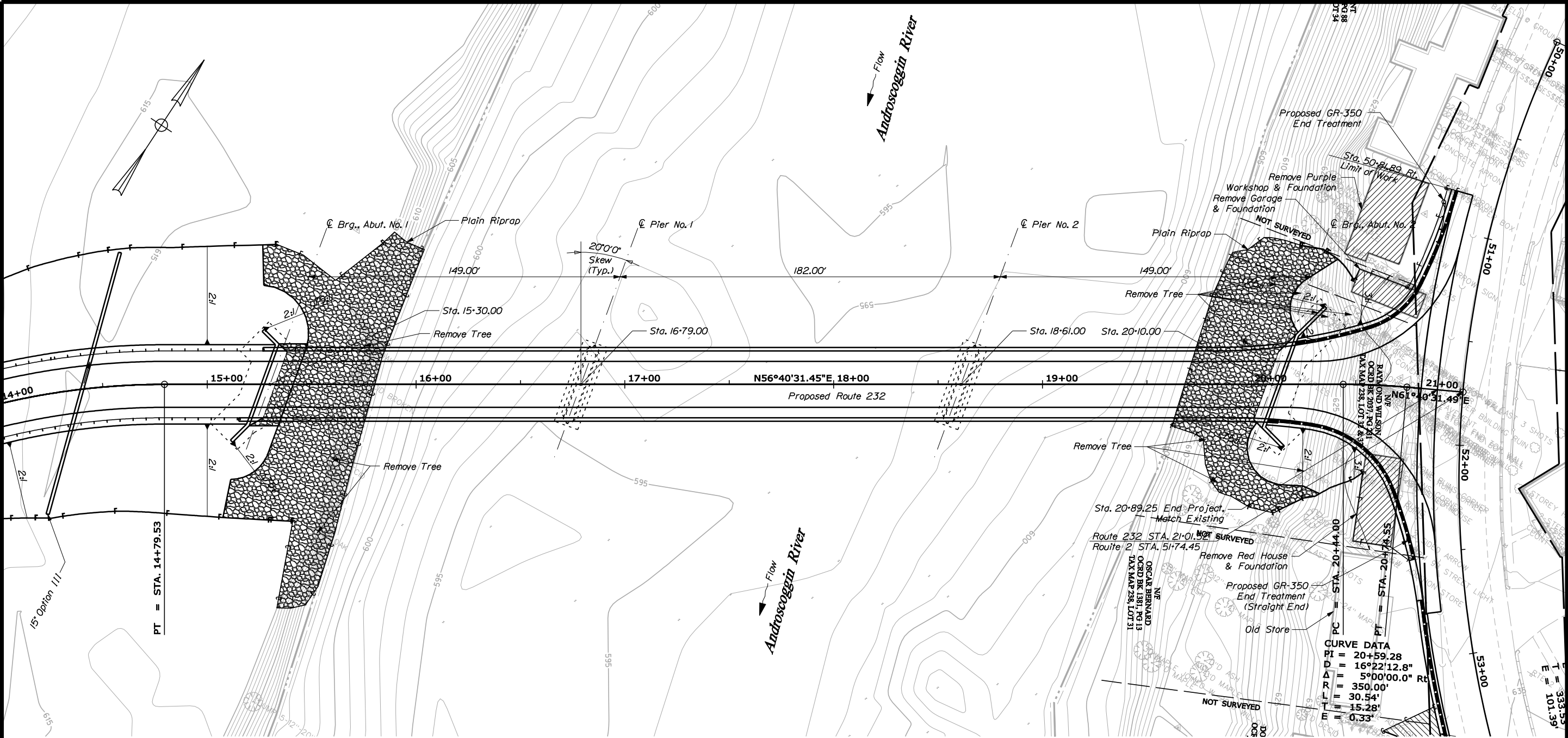
Maintain two - way traffic on existing bridge.

STATE OF MAINE DEPARTMENT OF TRANSPORTATION		BH-1510(600)X		PIN 15105.00		BRIDGE NO. 3248		BRIDGE PLANS	
MARTIN MEMORIAL BRIDGE ANDROSCOGGIN RIVER RUMFORD OXFORD COUNTY		PRELIMINARY PLANS		SHEET NUMBER 1 OF 8					
PROJ. MANAGER JAY M. O'CONNOR		BY K. WOOD		DATE 1/10/12		SIGNATURE P. HETHERLY		P.E. NUMBER	
DESIGN-DETAILED CHECKED-REVIEWED DESIGNS DETAILING		DESIGNS DETAILING		DESIGNS DETAILING		DESIGNS DETAILING		DESIGNS DETAILING	
REVISIONS 1		REVISIONS 2		REVISIONS 3		REVISIONS 4		FIELD CHANGES	

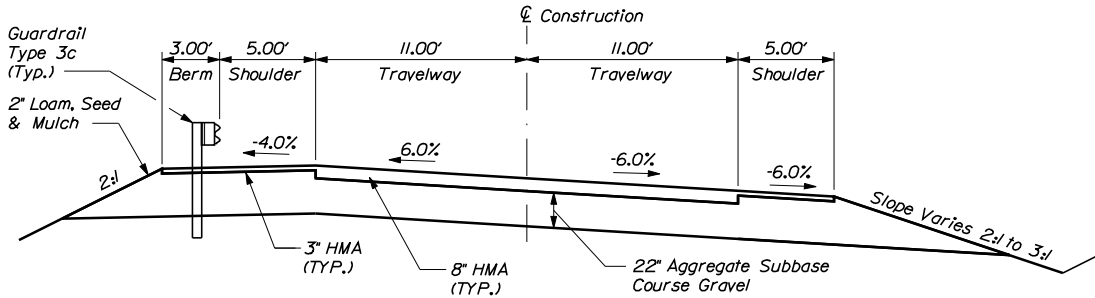




STATE OF MAINE		DEPARTMENT OF TRANSPORTATION		BH-1510(600)X		PIN 15105.00		BRIDGE NO. 3248		BRIDGE PLANS	
MARTIN MEMORIAL BRIDGE		ANDROSCOGGIN RIVER		OXFORD COUNTY		RUMFORD		SHEET NUMBER		2	
PRELIMINARY PLANS		SIGNATURE		P.E. NUMBER		DATE		REVISIONS 1		REVISIONS 2	
REVISIONS 3		REVISIONS 4		FIELD CHANGES		DATE		DATE		DATE	



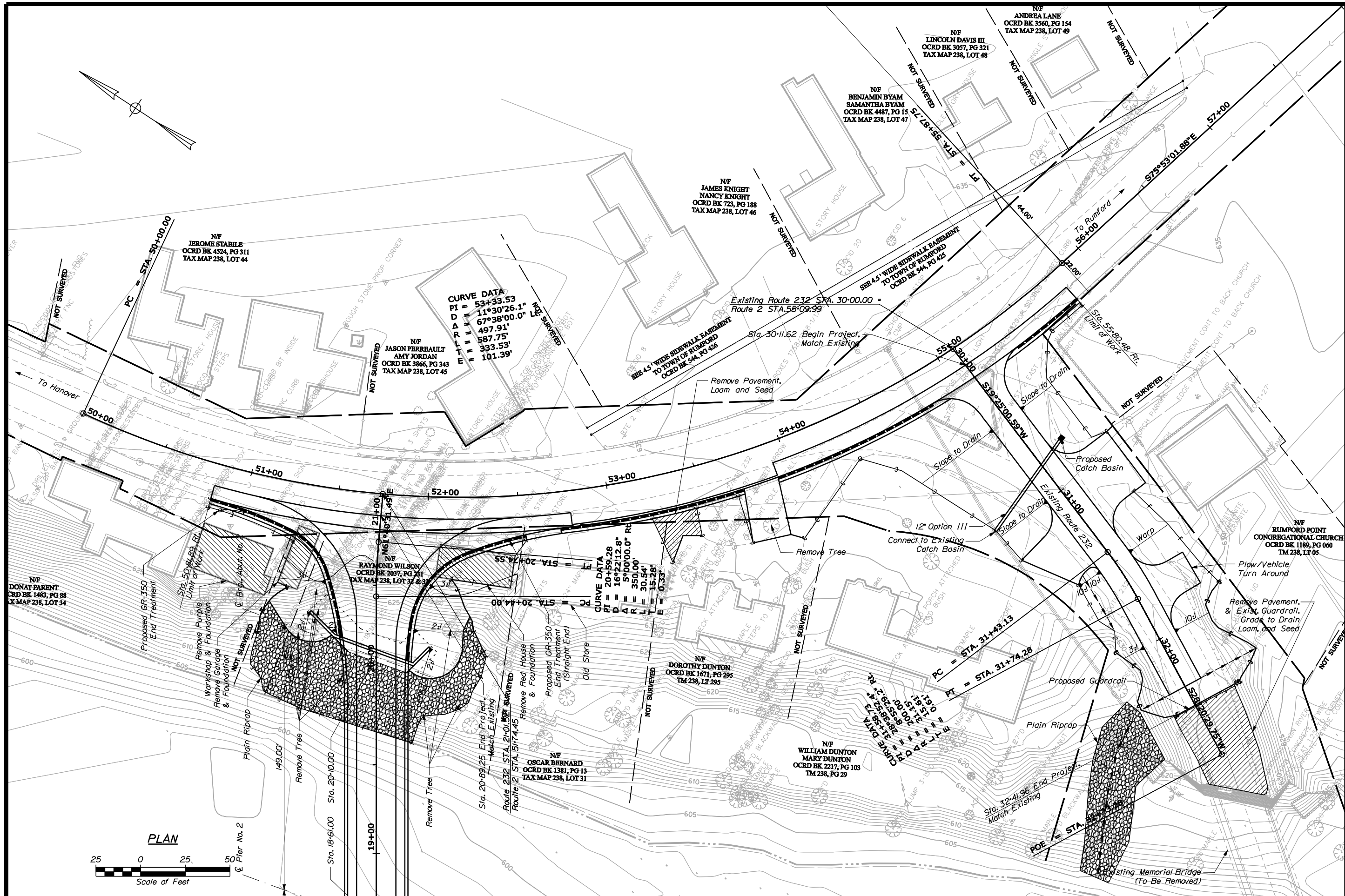
**FARM APPROACH TYPICAL SECTION**  
Sta. 0+00 to 10+00



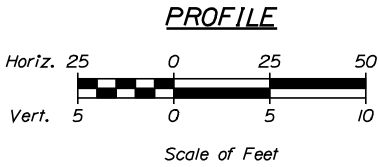
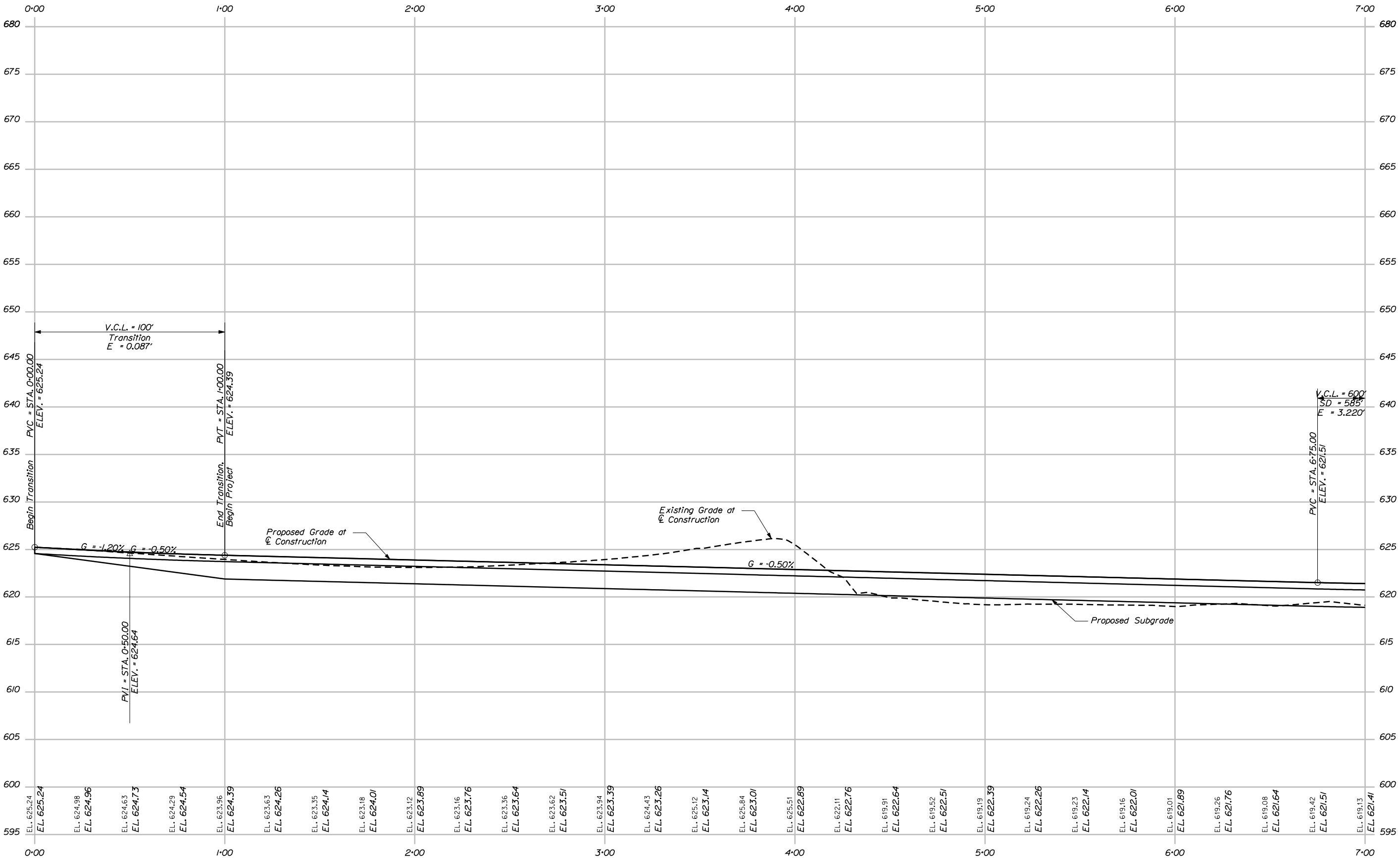
**FARM APPROACH TYPICAL SECTION**  
Sta. 10+50 to Bridge



STATE OF MAINE		DEPARTMENT OF TRANSPORTATION		BH-1510(600)X		PIN 15105.00		BRIDGE NO. 3248		BRIDGE PLANS	
MARTIN MEMORIAL BRIDGE		ANDROSCOGGIN RIVER		OXFORD COUNTY		RUMFORD		PRELIMINARY PLANS		SHEET NUMBER	
3		3		3		3		3		3	
OF 8		OF 8		OF 8		OF 8		OF 8		OF 8	

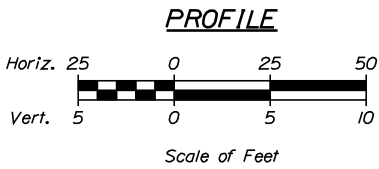
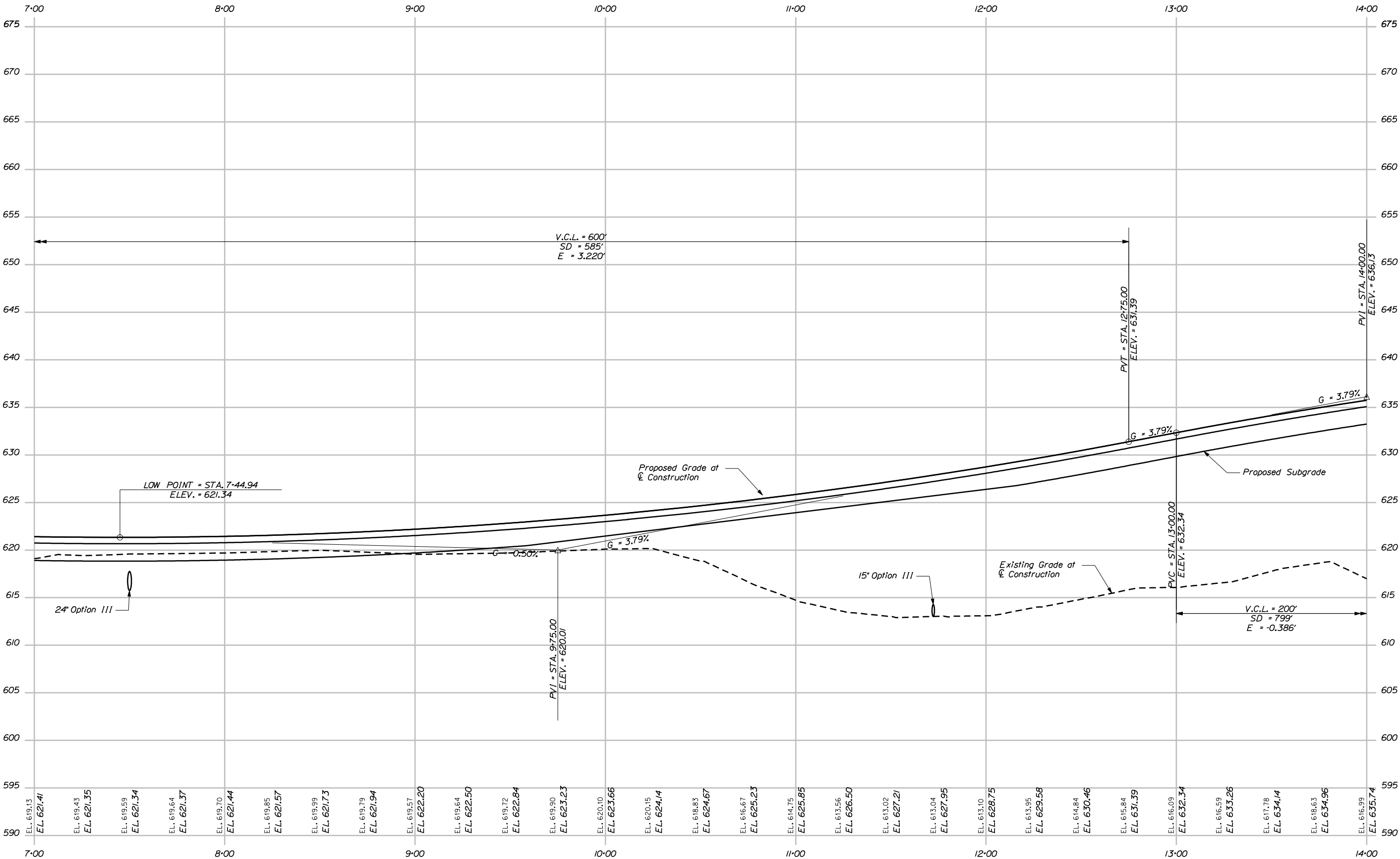


SHEET NUMBER  <div>4</div> OF 8	MARTIN MEMORIAL BRIDGE ANDROSCOGGIN RIVER OXFORD COUNTY RUMFORD	PROJ. MANAGER	B. CONDON	BY	DATE
		DESIGN-DETAILED	K. WOOD	K. WOOD	IND/VZ
		CHECKED-REVIEWED	R. S. BLUNT	P. HETHERLY	
		DESIGN2-DETAILED2			SIGNATURE
		DESIGN3-DETAILED3			
		REVISIONS 1			P.E. NUMBER
		REVISIONS 2			
		REVISIONS 3			
		REVISIONS 4			DATE
		FIELD CHANGES			
PRELIMINARY PLANS		STATE OF MAINE DEPARTMENT OF TRANSPORTATION  BH-1510(500)X  BRIDGE NO. 3248 PIN 15105.00 BRIDGE PLANS			



STATE OF MAINE		DEPARTMENT OF TRANSPORTATION	
BH-1510(600)X		SIGNATURE	
PIN 15105.00		P.E. NUMBER	
BRIDGE NO. 3248		DATE	
BRIDGE PLANS		FIELD CHANGES	
MARTIN MEMORIAL BRIDGE		BY DATE	
ANDROSCOGGIN RIVER		K. WOOD	
RUMFORD		R. S. BLUNT	
OXFORD COUNTY		P. HETHERLY	
PRELIMINARY PROFILES		DESIGN DETAIL 03	
SHEET NUMBER		REVISIONS 1	
5		REVISIONS 2	
OF 8		REVISIONS 3	
		REVISIONS 4	



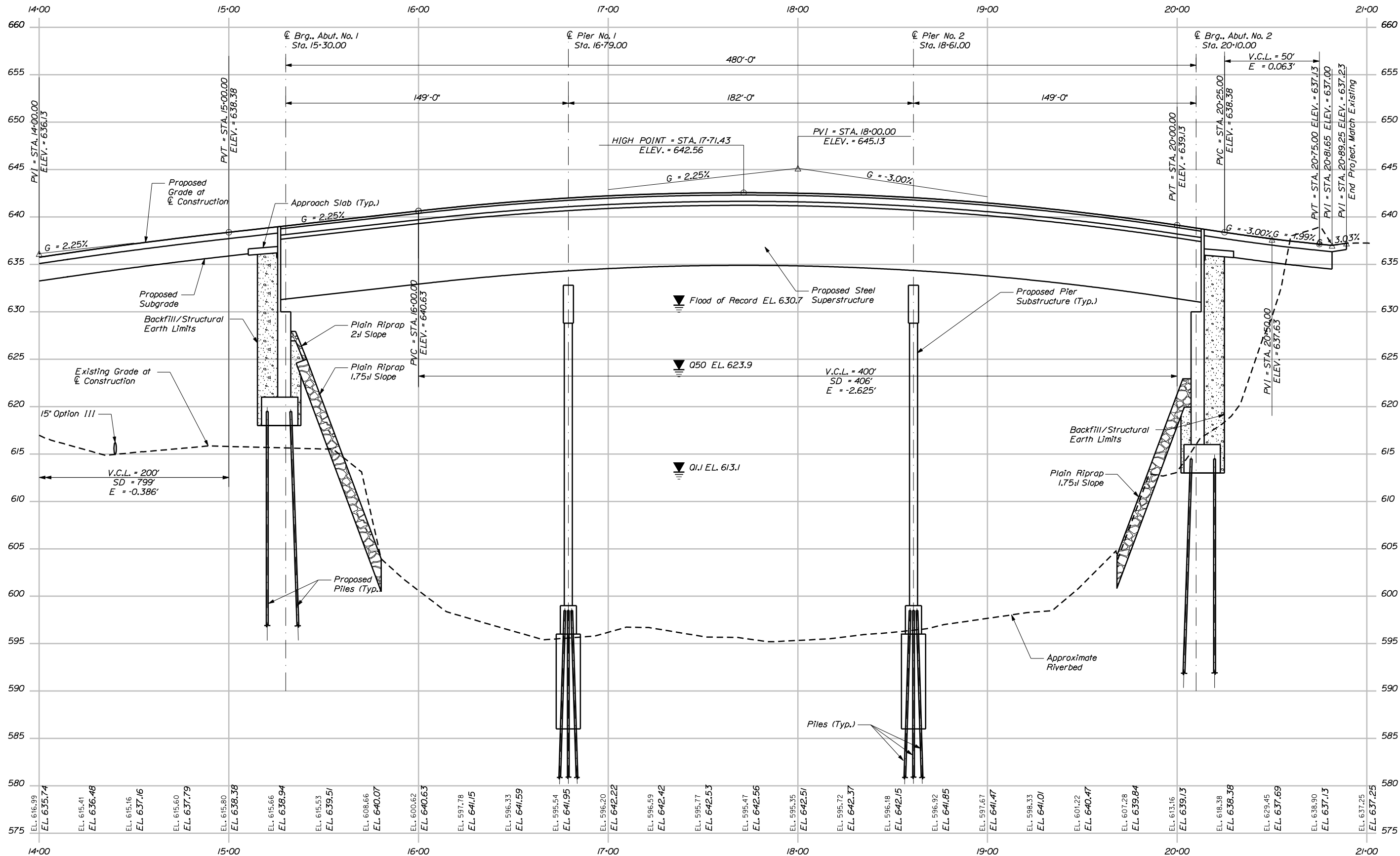


STATE OF MAINE		DATE	
DEPARTMENT OF TRANSPORTATION		BY	
BH-1510(600)X		K. WOOD	
BRIDGE NO. 3248		P. HETHERLY	
PIN 15105.00		SIGNATURE	
BRIDGE PLANS		P.E. NUMBER	
		DATE	
MARTIN MEMORIAL BRIDGE		OXFORD COUNTY	
ANDROSCOGGIN RIVER		RUMFORD	
PRELIMINARY PROFILES		SHEET NUMBER	
6		6	
OF 8			

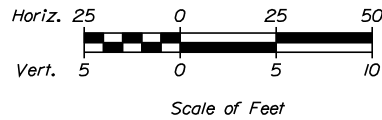
Date: 1/10/2012

Username: keith.wood

Filename: ...\\000\\BRIDGE\\MSTA007\_PROFILE.dgn Division: BRIDGE



PROFILE

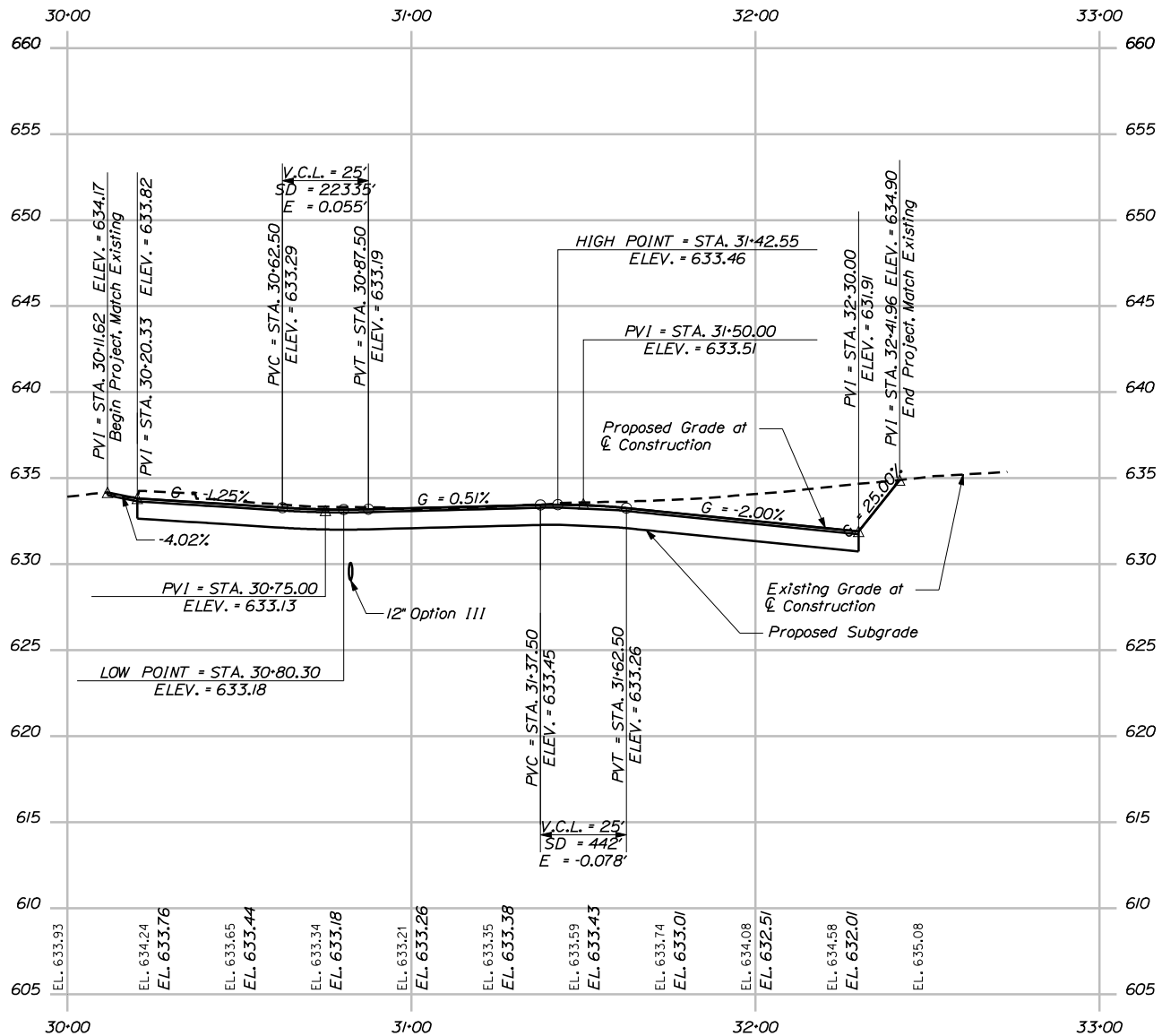


STATE OF MAINE
DEPARTMENT OF TRANSPORTATION
BH-1510(600)X
PIN 15105.00
BRIDGE NO. 3248
BRIDGE PLANS

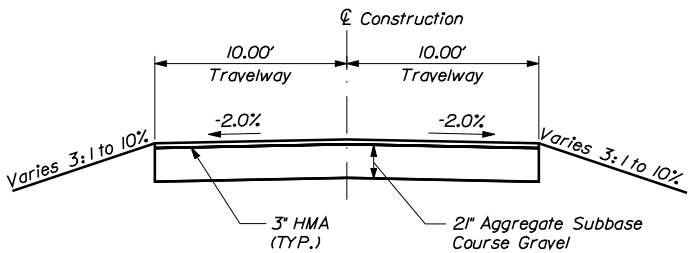
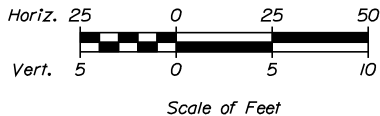
PROJ. MANAGER	BY	DATE
DESIGN-DETAILED	K. WOOD	1/10/12
CHECKED-REVIEWED	R. S. BLUNT	P. HETHERLY
DESIGN-DETAILED		
REVISIONS 1		
REVISIONS 2		
REVISIONS 3		
REVISIONS 4		
FIELD CHANGES		

MARTIN MEMORIAL BRIDGE
ANDROSCOGGIN RIVER
OXFORD COUNTY
RUMFORD
PRELIMINARY PROFILES

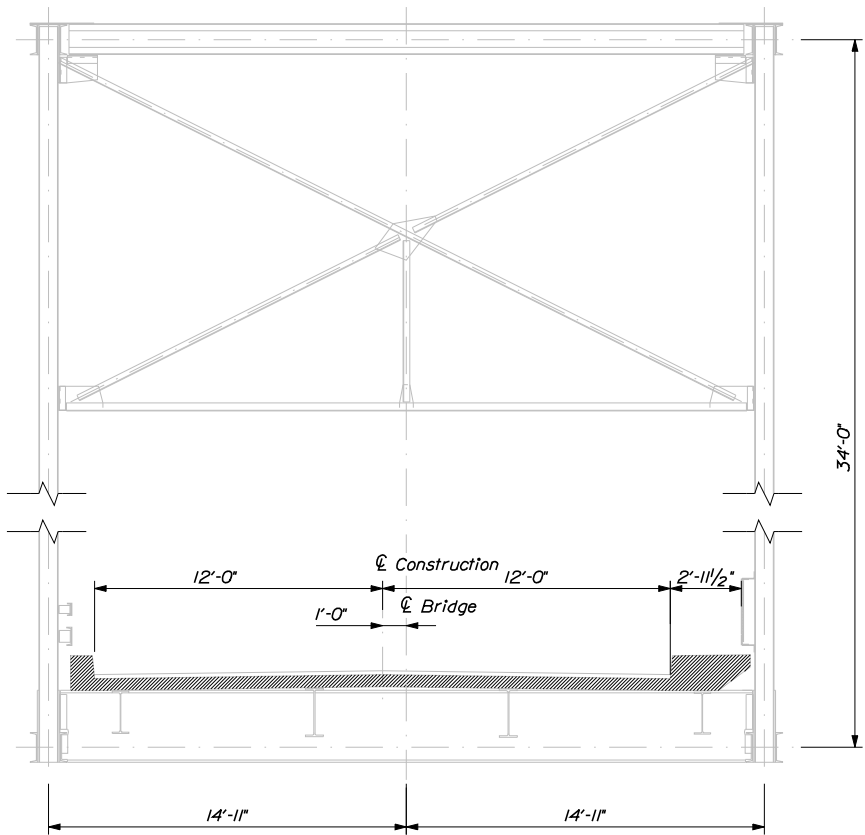
SHEET NUMBER
7
OF 8



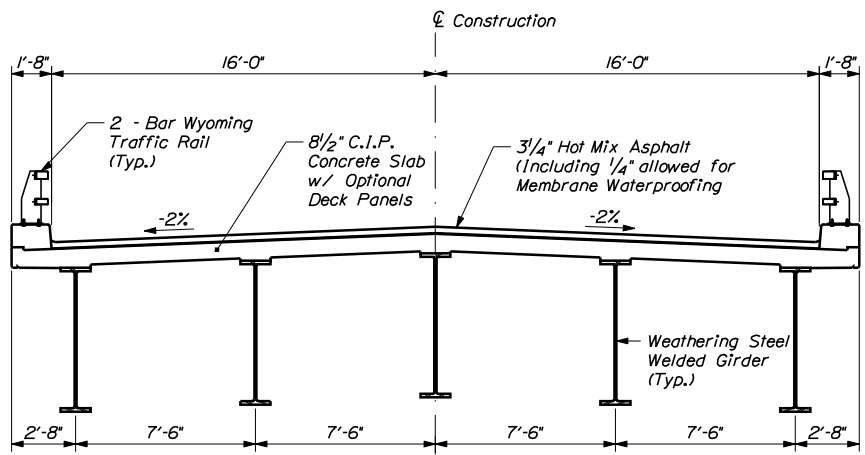
PROFILE



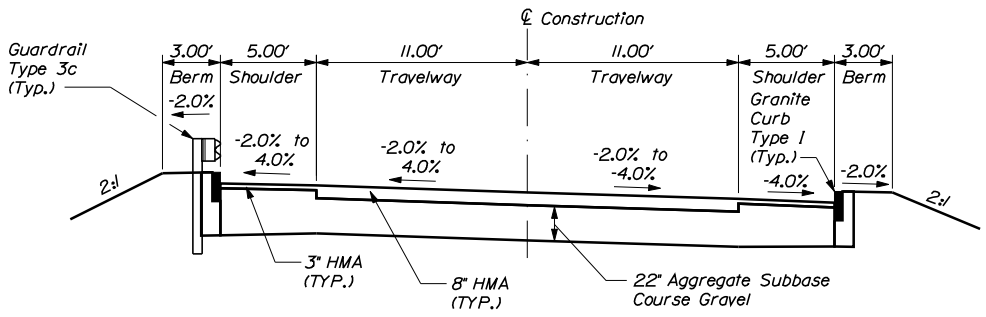
EXISTING ROUTE 232 TYPICAL SECTION



EXISTING BRIDGE SECTION



PROPOSED STRUCTURE



Guardrail Section Non Guardrail Section  
VILLAGE APPROACH TYPICAL SECTION