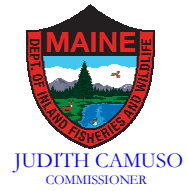




STATE OF MAINE
DEPARTMENT OF
INLAND FISHERIES & WILDLIFE
353 WATER STREET
41 STATE HOUSE STATION
AUGUSTA ME 04333-0041



July, 17, 2023

RE: Caribou large animal wildlife crossing

Dear Eric,

Maine Department of Inland Fisheries and Wildlife regional wildlife office has reviewed your request for placement of a wildlife crossing on Maine Street (Rt 164) in Caribou where it crosses Prestile Brook. This area has a resident population of deer that have been documented to cross Main Street year-round and been the cause of numerous documented deer-vehicle collisions. Quality habitat with farmland and forested resources combined with a valuable stream travel corridor are all factors in the repeated crossing of deer. Installation of a wildlife crossing structure, with appropriate fencing to guide wildlife to the crossing, could greatly decrease the number of collisions occurring throughout the year increasing deer survival and human safety.

In addition to the crossing, we would recommend additional fencing on the western side of the Rt 1. This is another area where deer are often hit on the roadway. A combination of structure on Main Street and fencing along Rt 1 would greatly increase human safety and deer survival.

I have included a map from some collaring data we collected between March 2019 and March 2021 for 2 adult female whitetail. GPS collars recorded 2 points a day, one at 4 am and one at 4 pm. I would estimate at least 25 -50 deer reside at some point during the year (summer only, winter only, or year-round) around the proposed crossing.

Deer densities in Northern Maine are low compared to other parts of the state, but where they occur at significant numbers like around Caribou, ensuring safe passage across roadways is concern for our department. We support the construction of the passage.

Sincerely,

Amanda DeMusz
Regional Wildlife Resource Management Supervisor
Ashland Regional Headquarters

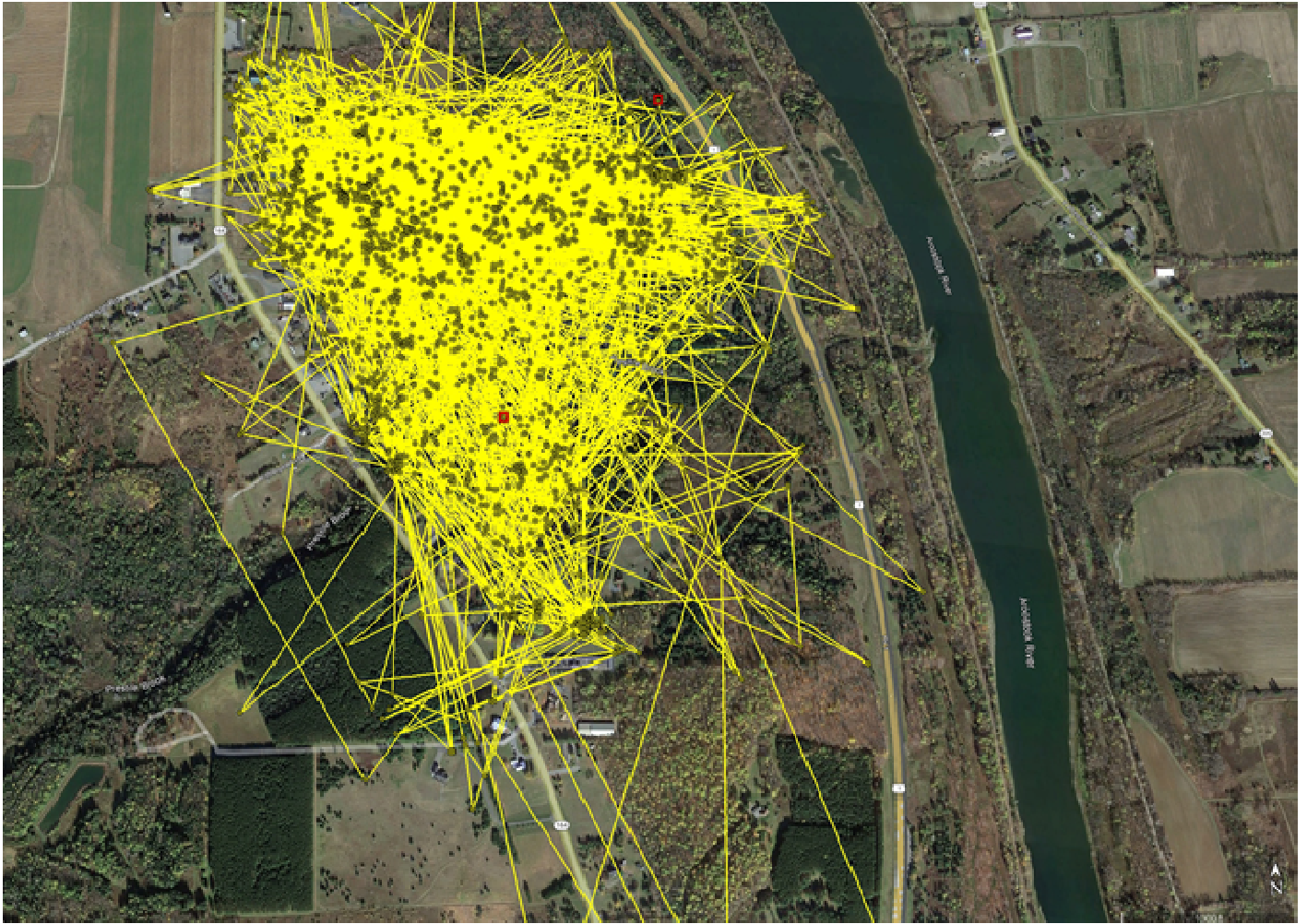


Figure depicting movement and location of 2 collared adult female deer from March 2019 to March 2021. Lines connecting dots are not deer travel lines, but are straight lines drawn to connect location points 12 hours apart.