

Perry Route 1 Wetland Mitigation Site Search

Site Search Process

- Stakeholder Consultation
 - Agency consultation
 - MDIFW Regional Biologists
 - Atlantic Sea-run Salmon Commission
 - Quoddy Regional Land Trust
 - Town Officials
- Site visits in September and December 2005

Types of Sites Found

- Minor fill in wetlands (<0.1 ac), usually associated with failed culverts and road sand
- Hanging culverts and crushed culverts on town roads
- Preservation opportunities associated with private land sales
- Preservation opportunities adjacent to MDIFW Wildlife Management Areas
- Preservation opportunities associated with Atlantic salmon streams

Sites Recommended for Further Consideration

- Lily Lake Wildlife Management Area
 - Preservation with minor restoration/enhancement
- Morong Point Wildlife Management Area
 - Preservation
- Pennamaquam Lake private parcel
 - Preservation with minor restoration/enhancement
- Morgan Borrow Pits
 - Wetland enhancement/creation in borrow pits

Lily Lake WMA

- Purchase 10-acre lot at outlet to complete MDIFW ownership of shoreline
- Clean debris out of stream

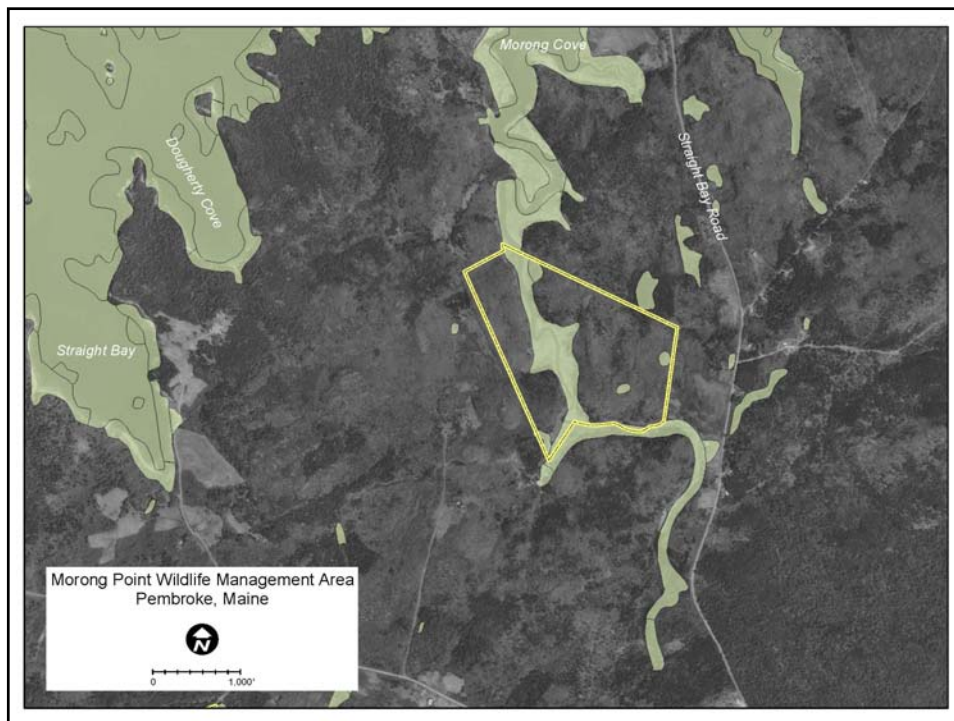






Morong Point WMA

- Purchase 44+-acre parcel with approximately 2 acres of freshwater wetland and 14 acres of adjacent tidal wetlands
- Site would become part of Morong Point WMA
- Would facilitate improvements to Cobscook Trail System





Pennamaquam Lake Private Parcel

- Preserve ~170-acre parcel with approximately 130 acres of wetlands
- Additional mitigation opportunities include replacement of a deficient culvert and removing a small amount of sand from a wetland





Morgan Borrow Pits

- Borrow pits are at or below the water table, presenting opportunities to create or enhance wetlands

