

---

# Maine-New Hampshire Connections Study

---

MaineDOT Interagency Meeting Presentation  
March 10, 2009

Gerry Audibert, MaineDOT Project Manager

---

# Study Purpose and Goals

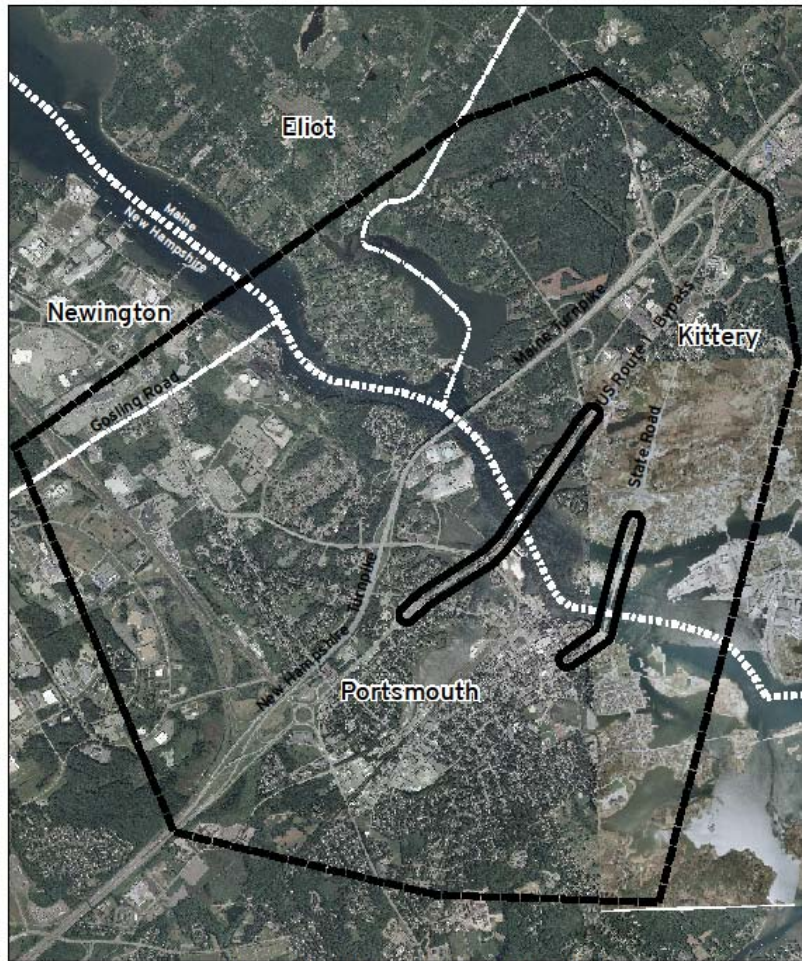
- Identify & Evaluate Feasible Transportation Connection Alternatives between Kittery, ME and Portsmouth, NH
  - Consistent with NEPA and STPA
  - Significant Public Involvement
    - Communities
    - Stakeholders
    - Section 4(f) & Section 106 Consulting Parties
  - Open & Unbiased Transparent Process
-

---

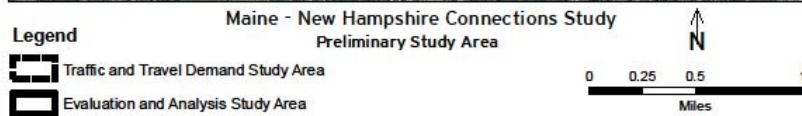
# Basic Study Scope

- Phase I – Complete by 10/01/09
    - Public Involvement Plan (MaineDOT-Approved)
    - Generate Purpose and Need Statement
    - Data Collection, Mapping, Baseline & Future Conditions Analyses
    - ID Alternatives, Conduct Fatal Flaw Analysis
  - Phase II – Complete by 06/01/10
    - Evaluate Feasible Alternatives
    - Select Preferred Alternative(s)
    - Final Report
-

# Study Area – Phase I



- Larger Area = Traffic & Travel Demand Area
- Smaller Areas = Phase I Evaluation & Analysis Area (Phase II Detailed Analyses may require revisions)



---

# Study Organizational Structure

- MaineDOT Lead; NHDOT Equal Partner
  - Consultant Team
  - Management Team
  - Project Team
  - Stakeholders & Consulting Parties Teams
  - General Public
  - Other Partners
-

---

# Consultant Team

- Lead Consultant - HNTB
  - Sub-Consultants
    - VHB
    - Morris Communications
    - Appledore Engineering, Inc.
    - Kevin Hooper Associates
    - Evan Richert
    - Liller Consulting, LLC
    - Preservation Company
    - IAC, LLC
    - RKG Associates, Inc.
-

**MaineDOT (Lead) – Gerry Audibert**  
**NHDOT – Bob Landry**

**Paul Godfrey, HNTB Study Manager**

**Engineering**

R. Bousa VHB

**Traffic Modeling**

C. Bobay, VHB  
T. Pendleton, HNTB

**Travel Demand**

K. Hooper  
J. Murphy, HNTB

**Hwy/Utility Costs**

D. Mitchell, HNTB

**Rail**

D. Wilcock, VHB

**Navigation**

R. Hunt, HNTB

**Geotech**

S. Sadek, HNTB

**Planning**

A. d'Amato HNTB

**Land Use**

E. Richert

**Community/Land**

G. Mikolaities, AE  
E. Petrie, HNTB

**GIS**

E. Petrie, HNTB

**Multimodal Coord**

D. Wilcock, VHB

**Bike/Ped**

G. Bakos, VHB

**Transit**

R. Tomczak, HNTB

**Economic**

E. Richert  
C. Seymour, RKG

**Public Involve.**

C. Morris

**Outreach**

S. Liller  
G. Mikolaities, AE

**Meeting Logistics**

C. Butler, HNTB

**Web Site**

C. Morris

**Resources**

J. Grilli HNTB

**NEPA, 4(f)**

A. Kim, HNTB

**Social Resources**

A. Kim, HNTB

**Cultural**

E. Marlat, IAC

**Hist & Archaeo**

L. Monroe, PC

**Natural Resources**

K. Slattery, HNTB

**Permitting**

K. Slattery, HNTB

**Air & Noise**

T. Wholley, VHB

**Right of Way**

P. Danforth, HNTB

---

# Management Team

- MaineDOT – **G. Audibert**, R. Charrette, D. Gardner
- NHDOT – **Bob Landry**, John Butler
- ME FHWA – **A. Price**, P. Kleskovic, M. Hasselman
- NH FHWA – **Leigh Levine**
- HNTB Team – **Paul Godfrey**

## Roles/Responsibilities

- Technical and Policy Direction, Oversight
  - Oversight on All State & Federal Rules & Guidelines
  - Monthly Team Meetings
  - Weekly Conference Calls (As Needed)
-

---

# Project Team

- Management Team
- Maine SHPO – **Earle Shettleworth, Jr.**, Kirk Mohny
- NH SHPO – **Elizabeth Muzzy**, Nadine Peterson
- Town of Kittery, ME – **Jonathan Carter**
- City of Portsmouth, NH – **Steve Parkinson**
- SMRPC & KACTS (Resources) – **Tom Reinauer**
- Rockingham Planning Commission & Seacoast MPO (Resources) – **Dave Walker**, Cliff Sinnott

## Roles/Responsibilities

- Feedback and Guidance on Study
  - Identify and Provide Direction on Policy Issues
  - Meet 8 to 10 Times
-

---

# Public Involvement Plan

- Develop and Implement PIP (MaineDOT Approval)
  - Communications
    - Website
    - Mailings
    - 1/4ly Newsletter
    - Media
  - Public Meetings
  - Stakeholder Meetings
  - Other Meetings
  - Research Survey (telephone)
-

---

# Public Meetings

- 6 Meetings (Afternoon, Evening for Each)
  - Study Purpose & Need, Study Area, Base Data Input
  - Finalize P&N, Finalize Study Area, Data Collected
  - Base Conditions Report, Alternatives, Fatal Flaw Analysis
  - Identify Feasible Alternatives, Why others Were Dismissed From Further Consideration
  - Results of Feasible Alternatives Evaluation
  - Preferred Alternative(s)
-

---

# Stakeholder, Consulting Party Meetings






- 6 Meetings (Same Topics)
  - Immediately Before or After Public Meetings
  - Assist Study Team in Developing Strategies, Interpret Public Input & Feedback, Evaluate Comments, Identifying Next Steps
  - Brainstorming
  - Feedback from Larger Stakeholders Groups
-

---

# Other Meetings

- Key Opinion Leaders
  - Neighborhood Group Meetings
  - Resource Agency Meetings
  - SHPO Meetings (As Needed)
  - MaineDOT and NHDOT Interagency Meetings
    - Monthly Updates
    - Some Combined ME-NH (?)
-

TASK	2009												2010			
	Mar	Apr	May	Jun	Jul	Aug	Sep	Oct	Nov	Dec	Jan	Feb	Mar	Apr	May	Jun
Notice to Proceed (assumed March 6, 2009)																
<b>1.0 Develop and Implement a Public Involvement Plan/ Develop Purpose and Need Statement</b>																
Develop Public Involvement Plan		○	▲													
Study Communications (Web site, e-mails, mailings, media interface)																
Public Informational Meetings (6 topics, 2 meetings per topic)		●	●			●			●				●		●	
Stakeholder Meetings (shortly following Public Information Meetings, same topics)		●	●			●							●		●	
Other Meetings (Key opinion leaders, resource agencies, etc.)																
Develop Purpose and Need Statement		○	▲													
Refine Study Area																
<b>2.0 Data Collection, Mapping, and Baseline/Future Conditions Analysis</b>																
Review Previous Studies/Assemble Base Information																
Collect additional data and mapping as required																
Receive New 2009 Bridge Inspection and Cost Data					◆			◆								
Complete base and future Travel Demand Modeling																
Complete Base Data Findings, Analysis and Report						●		▲								
<b>3.0 Identify Alternatives, Conduct Fatal Flaw Analysis</b>																
Identify Alternatives																
Develop and Define Evaluation Criteria																
Fatal Flaw Analysis and Report (to be completed by October 1, 2009)									○	▲	◆					
<b>4.0 Evaluate Feasible Alternatives and Select Preferred Alternative(s)</b>																
Evaluate Feasible Alternatives																
Prepare Conceptual designs, cost estimates, mapping, and relevant analyses																
Evaluate/Screen Alternatives																
Project Team Evaluation Criteria review																
Select Preferred Alternative(s)																
<b>5.0 Documentation, Draft and Final Reports</b>																
Prepare Draft and Final Technical Memoranda																
Prepare and Submit Draft Report															○	
Prepare and Submit Final Report																▲
Final Report Approved, Phase I and NEPA complete (June 1, 2010)																◆
<b>6.0 Study Management and Administration</b>																
Study Management and Administration																
Study Team, Project Team and Management Team Meetings																

<b>LEGEND</b>	Task Duration 	Draft Document 	Final Document 	Public/ Stakeholders Meeting 	Milestone Date 
---------------	---	--	--	---	--

---

# Purpose & Need

- Critical Element of Study
  - Starting Point for Development of Alternatives
  - Clearly ID Transportation & Land Use Needs
  - Clearly State Study Goals and Objectives
  - Will Guide Which Alternatives Move Forward
  - Purpose & Need Statements
    - FHWA (ME & NH)
    - Army Corps – Prefer to Combine ME & NH ACOEs
-

---

# Data Collection & Mapping

- Data Collection
    - Traffic
    - Other Modes (transit, rail, bike/ped, water-borne, other)
    - Navigational
    - Engineering
    - Resource data
  - Mapping - Aerial Maps as Base Plans, Overlain by
    - Transportation Facilities
    - Utilities
    - Land Use, Zoning, R-O-W
    - Environmental and Cultural Resources
  - All data summarized in stand alone Report
  - SHPO Windshield Surveys
-

---

# Baseline/Future Conditions Analysis

- Travel Demand Forecasting (Seacoast Model)
  - Develop Baseline Travel Demand
  - Future Travel Demand Forecasts (2035) – No Build
  - Base Case and Future No Build Conditions Analysis
  - Identify Transportation Network Deficiencies
-

---

# Define Alternatives

## ■ Identify Alternatives

- Management, Project, Stakeholder & Consulting Parties, Public Involvement
- Expect 10 Alternatives to Meet P&N (for Contract Purposes Only)

## ■ Define Alternatives Evaluation Criteria

## ■ Retain All Feasible Alternatives

- Expect Some to be Eliminated by Purpose & Need Statement
  - Expect 5 Feasible Alternatives (for Contract Purposes Only)
-

# Phase I Potential P & N Initial Alternatives

Alternative	# of Crossings	Sarah Mildred Long Bridge			Memorial Bridge			I-95 Bridge
		Rehab	Replace	Eliminate	Rehab	Replace	Eliminate	Rehab
Alternative 1	3							
Alternative 2	3							
Alternative 3	3							
Alternative 4	3							
Alternative 5	2							
Alternative 6	2							
Alternative 7	2							
Alternative 8	2							
Alternative 9	2+				Bike/Ped Only			
Alternative 10	2+					Bike/Ped Only		

---

# Phase I Fatal Flaw Analysis

- Analysis to Include:
    - Future Travel Demand Forecasts & Traffic Analysis
    - Natural, Cultural & Social Resource Impacts
    - Potential Land Use & Economic Impacts
    - Conceptual Designs, Rough Costs
    - Broad-Brush Analysis (Mostly Qualitative)
  - BICA Consultant to Provide Bridge & Cost Info
  - Complete by October 1, 2009
-

---

# Phase II Evaluate Feasible Alternatives

- Alternatives to be Evaluated:
    - All Feasible Alternatives from Phase I Analysis
    - Future No-Build with TDM/TSM
  - Detailed Alternatives Analyses
  - Identify Preferred Alternative(s)
  - Summarize and Document Findings
-

---

# Questions

- MaineDOT Questions:
    - Will ACOE Generate 1 Bi-State Purpose Statement?
    - Will ME ACOE be the Lead? (MaineDOT and ME FHWA are leads, ME & NH SHPOs are Separate)
    - Monthly IA Meeting Updates Sufficient, or Need More Communication?
    - Periodic Combined ME & NH Interagency Meetings?
    - Consulting Parties
      - FHWA Lead – Section 4(f)
      - SHPO Lead – Section 106
  - Agency Questions, Comments?
-