

Traffic Volume Counts 2007 Annual Report



MaineDOT

**Data collected and published by the
State of Maine**

**Department of Transportation
Traffic Engineering Division**

**In cooperation with the
United States Department of Transportation
Federal Highway Administration**

TABLE of CONTENTS

Forward

Continuous Count Program

24 Hour Traffic Data Collection Program

Description of Headings, Symbols, and Abbreviations

Map of State Count Zones

Graph of 2007 Weekly Group Mean Factors

List of 2007 Weekly Group Mean Factors

List of 2007 Weekly Group Mean Factors as a Percent of AADT

Traffic Volume Counts by County, Town, and Route

FOREWORD

The Department of Transportation, Traffic Engineering Division, and Traffic Monitoring Section is responsible for the collection of all types of traffic data and maintenance of a statewide traffic volume database. The reduction and reporting of traffic volumes and vehicle classification data are accomplished through two types of count programs. They are as follows:

CONTINUOUS COUNT PROGRAM

Traffic volumes are monitored on a continuous year round basis at 64 permanent recorder sites located on major highways throughout the State. These hourly counts are collected to produce an average weekday figure, a weekly average day, a monthly average day, and a monthly average weekday. This information is compiled to develop an Annual Average Daily Traffic (AADT) figure for each location. The AADT is computed from the average of the weekly average day totals for the year.

The increasing demand to determine the types of vehicles (e.g. passenger cars, single-unit trucks, and semi's) traveling Maine's highways has prompted the development of a Continuous Classification Program. Currently, the department has 23 locations along routed highways that collect data based on thirteen categories as defined by the Federal Highway Administration. An AADT is computed based on the total volume.

24 HOUR TRAFFIC DATA COLLECTION PROGRAM

Between April 1st and November 15th of each year, 24 hour traffic counts (i.e., coverage counts) are gathered to monitor traffic flow and changes in traffic patterns. These counts are generally taken at intersections with major routes and/or other significant roads, Compact Urban Lines (CUL), or Town Lines (TL), or in coordination with ongoing projects or special traffic studies for the Department.

Additionally, 24-hour vehicle classification counts are performed in conjunction with the coverage counts to provide a comprehensive view of traffic along the routed highways.

The State is divided into three count zones:

ZONE I : Southwestern Maine to western Penobscot Bay region. This zone includes all of York, Cumberland, Sagadahoc, Lincoln, Knox, and Waldo counties, Oxford county from Albany Twp/Waterboro West & Oxford, Otisfield, as well as Poland, and Mechanic Falls in Androscoggin county.

ZONE II : Western/Central Maine and eastern Penobscot Bay region. This zone includes all of Androscoggin except Poland, and Mechanic Falls, Franklin, Kennebec counties, the remainder of Oxford county, Somerset county from Bingham south plus between Flagstaff Lake area and Kennebec River, southern Penobscot county, and western Hancock county.

ZONE III : Northern and eastern Maine. This zone includes all of Aroostook, Piscataquis, Washington counties, northern and southeastern Hancock county, Penobscot county from Lagrange north, and the remainder of Somerset county.

These zones are counted on a five year cycle: Zones I and II are counted twice and Zone III once during each five year period. The coverage count program also consists of the “Special Counts” taken each year to satisfy Departmental needs, local requests, and Federal requirements. These include the annual collection of data for the State’s four urbanized areas (BACTS, KACTS, ATRC, and PACTS), Interstate System counts, and data collected from the various traffic studies conducted throughout the year. The 2007 Program included 3884 counts accomplished.

Once the AADT’s have been computed for all of the permanent recorder locations, weekly factors for each station are computed by dividing the AADT by each average weekly figure. Those stations which exhibit similar traffic patterns are assembled and placed into one of three groups:

URBAN : Roadways which carry commuter traffic and exhibit little seasonal change in traffic volumes.

ARTERIAL : Roadways which carry commuter traffic but exhibit moderate seasonal changes in traffic volumes.

RECREATIONAL : Roadways which are heavily influenced by seasonal traffic.

Within each of the three groups, a factor for each week is computed by averaging the weekly factors from each station within the group.

The 2007 Weekly Group Mean Factors were developed by averaging the Weekly Group Mean Factor for 2004, 2005 and 2006. The following pages show the graph of the 2007 Weekly Group Mean Factors, a list of these factors, and the 2007 Weekly Group Mean Factor as a percent of the AADT.

The 24-hour raw data may now be grouped and assigned a factor to produce an AADT. Growth factors for expanding traffic in uncounted zones are developed utilizing data from the permanent recorders and comparing it to the data from the previous year.

The updated AADT’s are entered into the Maine Department of Transportation’s database to be used by various Departmental employees.

DESCRIPTION of HEADINGS, SYMBOLS, AND ABBREVIATIONS

The following is a description of the column headings, symbols, and abbreviations used for the Coverage Count Section.

TOWN The town in which a count was taken

ROUTE The road or highway on which the count was taken.

Non-Interstate Highways and Roads

---- X indicates a Routed Highway

0196X = SR 196 0001X = US Route 1

---- A or --- B indicates an Alternate Routed Highway

0001A = US Route 1A 0009B = SR 9B

---- C indicates a Business Route

0001C = Business US Route 1, 1A, or 1B

0025C = Business SR 25

Just a number with no letter OR no numbers or letters indicates a non-routed highway

= Pine Hill Road 00001 = Hubbard Road

01414 = IR 1414 00991 = IR 991 (Biddeford Road)

Interstate System

---- X indicates Northbound or Eastbound

0095X = I-95 Northbound

0395X = I-395 Eastbound

---- S indicates Southbound

0095S = I-95 Southbound

---- W indicates Westbound

0395W = I-395 Westbound

LOCATION A description of where the count was taken.

APP = Approach	ART = Arterial	AVE = Avenue	BK = Brook	BLVD = Boulevard
BR = Bridge	CIR = Circle	CL = County Line	CNR = Corner	CONN = Connector
CTR = Center	CUL = Compact Urban Line	CWY = Cause way	CV = Cove	DR = Drive
EB = Eastbound	ENT = Entrance	FL = Fall	FLS = Falls	FT = Fort
HTS = Heights	HWY = Highway	INT'L = International	ILD=Island	IR = Inventory Road
LG = Long	LK = Lake	LN = Lane	LWR = Lower	LTL = Little
MT = Mount	MTN = Mountain	NB = Northbound	NH = New Hampshire	OW = One Way
PD = Pond	PK = Park	PKWY = Park Way	PL = Place	PT = Point
PZ = Plaza	RD = Road	RDG = Ridge	RMP = Ramp	RR = Railroad
RV = River	SB = Southbound	SL = State Line	SQ = Square	SR = State Route
ST = Street	STA = Station	STR = Stream	TER = Terrace	TL = Town Line
TPK = Turnpike	TR = Trail	UPR = Upper	US = United States Route	WB = Westbound

N/O, NE/O, E/O, etc. = North of, Northeast of, East of, etc.

TYPE **Category for each count taken.**

- A Permanent Recorder Count**
- B BACTS Count**
- C Coverage Count**
- I Interstate Count**
- K KACTS Count**
- L ATRC Count (Formerly LACTS)**
- M Municipal, Town, Regional Count**
- P PACTS Count**
- S Special Count**
- T Turning Movement Count**
- W Weigh and Motion**
- Z Speed Count**

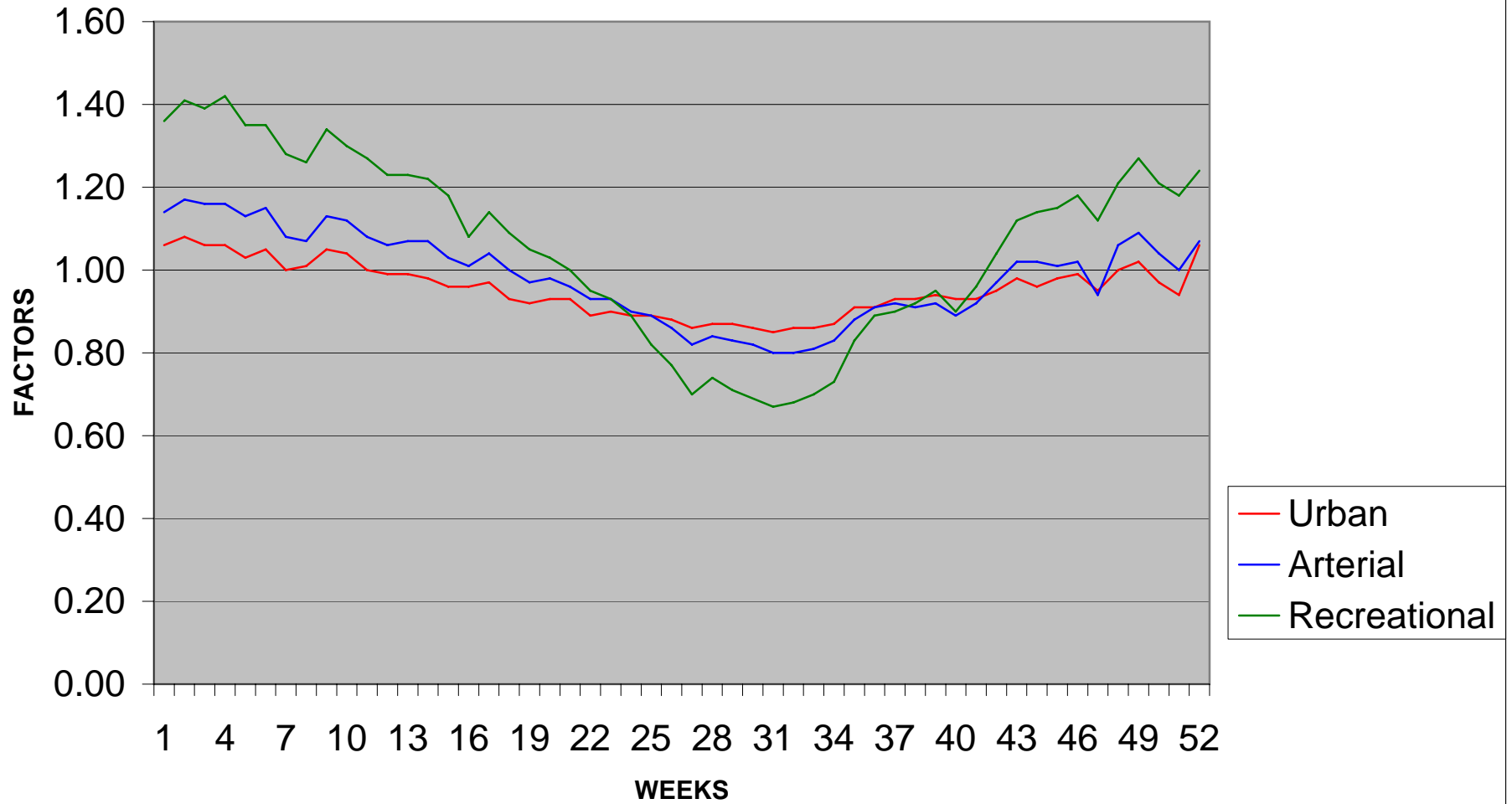
GROUP The factor group assigned to the location.

- I Urban Group II Arterial Group**
- III Recreational Group ATR Permanent Recorder Controlled Group**

AADT Annual Average Daily Traffic

2007 WEEKLY GROUP FACTORS

AVERAGE: 2004, 2005, 2006



2007
WEEKLY GROUP MEAN FACTORS
AVERAGE: 2004, 2005, 2006

Month	Start Date	Dates	Month Week #	Urban Group I	Arterial Group II	Recreational Group III	Group I + II	Group II + III	Group I + III	Year Week #
Jan/Feb	(31)	1,2,3,4,5	1	1.06	1.14	1.36	1.10	1.25	1.21	1
	(7)	8,9,10,11,1	2	1.08	1.17	1.41	1.13	1.29	1.25	2
	(14)	15,16,17,1	3	1.06	1.16	1.39	1.11	1.28	1.23	3
	(21)	22,23,24,2	4	1.06	1.16	1.42	1.11	1.29	1.24	4
	(28)	29,30,31,1	5	1.03	1.13	1.35	1.08	1.24	1.19	5
Feb/Mar	(4)	5,6,7,8,9	1	1.05	1.15	1.35	1.10	1.25	1.20	6
	(11)	12,13,14,1	2	1.00	1.08	1.28	1.04	1.18	1.14	7
	(18)	19,20,21,2	3	1.01	1.07	1.26	1.04	1.17	1.14	8
	(25)	26,27,28,2	4	1.05	1.13	1.34	1.09	1.24	1.20	9
March	(4)	5,6,7,8,9	1	1.04	1.12	1.30	1.08	1.21	1.17	10
	(11)	12,13,14,1	2	1.00	1.08	1.27	1.04	1.18	1.14	11
	(18)	19,20,21,2	3	0.99	1.06	1.23	1.03	1.15	1.11	12
	(25)	26,27,28,2	4	0.99	1.07	1.23	1.03	1.15	1.11	13
April/May	(1)	2,3,4,5,6	1	0.98	1.07	1.22	1.03	1.15	1.10	14
	(8)	9,10,11,12	2	0.96	1.03	1.18	1.00	1.11	1.07	15
	(15)	16,17,18,1	3	0.96	1.01	1.08	0.99	1.05	1.02	16
	(22)	23,24,25,2	4	0.97	1.04	1.14	1.01	1.09	1.06	17
	(29)	30,1,2,3,4	1	0.93	1.00	1.09	0.97	1.05	1.01	18
May/Jun	(6)	7,8,9,10,1	2	0.92	0.97	1.05	0.95	1.01	0.99	19
	(13)	14,15,16,1	3	0.93	0.98	1.03	0.96	1.01	0.98	20
	(20)	21,22,23,2	4	0.93	0.96	1.00	0.95	0.98	0.97	21
	(27)	28,29,30,3	5	0.89	0.93	0.95	0.91	0.94	0.92	22
Jun/Jul	(3)	4,5,6,7,8	1	0.90	0.93	0.93	0.92	0.93	0.92	23

	(10)	11,12,13,1	2	0.89	0.90	0.89	0.90	0.90	0.89	24
	(17)	18,19,20,2	3	0.89	0.89	0.82	0.89	0.86	0.86	25
	(24)	25,26,27,2	4	0.88	0.86	0.77	0.87	0.82	0.83	26
Jul/Aug	(1)	2,3,4,5,6	1	0.86	0.82	0.70	0.84	0.76	0.78	27
	(8)	9,10,11,12	2	0.87	0.84	0.74	0.86	0.79	0.81	28
	(15)	16,17,18,1	3	0.87	0.83	0.71	0.85	0.77	0.79	29
	(22)	23,24,25,2	4	0.86	0.82	0.69	0.84	0.76	0.78	30
	(29)	30,31,1,2,3	5	0.85	0.80	0.67	0.83	0.74	0.76	31
Aug/Sep	(5)	6,7,8,9,10	1	0.86	0.80	0.68	0.83	0.74	0.77	32
	(12)	13,14,15,1	2	0.86	0.81	0.70	0.84	0.76	0.78	33
	(19)	20,21,22,2	3	0.87	0.83	0.73	0.85	0.78	0.80	34
	(26)	27,28,29,3	4	0.91	0.88	0.83	0.90	0.86	0.87	35
September	(2)	3,4,5,6,7	1	0.91	0.91	0.89	0.91	0.90	0.90	36
	(9)	10,11,12,1	2	0.93	0.92	0.90	0.93	0.91	0.92	37
	(16)	17,18,19,2	3	0.93	0.91	0.92	0.92	0.92	0.93	38
	(23)	24,25,26,2	4	0.94	0.92	0.95	0.93	0.94	0.95	39
	(30)	1,2,3,4,5	1	0.93	0.89	0.90	0.91	0.90	0.92	40
Oct/Nov	(7)	8,9,10,11,1	2	0.93	0.92	0.96	0.93	0.94	0.95	41
	(14)	15,16,17,1	3	0.95	0.97	1.04	0.96	1.01	1.00	42
	(21)	22,23,24,2	4	0.98	1.02	1.12	1.00	1.07	1.05	43
	(28)	29,30,31,1	5	0.96	1.02	1.14	0.99	1.08	1.05	44
Nov/Dec	(4)	5,6,7,8,9	1	0.98	1.01	1.15	1.00	1.08	1.07	45
	(11)	12,13,14,1	2	0.99	1.02	1.18	1.01	1.10	1.09	46
	(18)	19,20,21,2	3	0.95	0.94	1.12	0.95	1.03	1.04	47
	(25)	26,27,28,2	4	1.00	1.06	1.21	1.03	1.14	1.11	48
December	(2)	3,4,5,6,7	1	1.02	1.09	1.27	1.06	1.18	1.15	49
	(9)	10,11,12,1	2	0.97	1.04	1.21	1.01	1.13	1.09	50
	(16)	17,18,19,2	3	0.94	1.00	1.18	0.97	1.09	1.06	51
	(23)	24,25,26,2	4	1.06	1.07	1.24	1.07	1.16	1.15	52

2007
WEEKLY GROUP MEAN FACTORS
AVERAGE: 2004, 2005, 2006
AS PERCENT OF AADT

Month	Start Date	Dates	Month Week #	Urban Group I	Arterial Group II	Recreational Group III	Group I + II	Group II + III	Group I + III	Year Week #
Jan/Feb	(31)	1,2,3,4,5	1	94.34	87.72	73.53	90.91	80.00	82.64	1
	(7)	8,9,10,11,1	2	92.59	85.47	70.92	88.50	77.52	80.00	2
	(14)	15,16,17,1	3	94.34	86.21	71.94	90.09	78.13	81.30	3
	(21)	22,23,24,2	4	94.34	86.21	70.42	90.09	77.52	80.65	4
	(28)	29,30,31,1	5	97.09	88.50	74.07	92.59	80.65	84.03	5
Feb/Mar	(4)	5,6,7,8,9	1	95.24	86.96	74.07	90.91	80.00	83.33	6
	(11)	12,13,14,1	2	100.00	92.59	78.13	96.15	84.75	87.72	7
	(18)	19,20,21,2	3	99.01	93.46	79.37	96.15	85.47	87.72	8
	(25)	26,27,28,2	4	95.24	88.50	74.63	91.74	80.65	83.33	9
March	(4)	5,6,7,8,9	1	96.15	89.29	76.92	92.59	82.64	85.47	10
	(11)	12,13,14,1	2	100.00	92.59	78.74	96.15	84.75	87.72	11
	(18)	19,20,21,2	3	101.01	94.34	81.30	97.09	86.96	90.09	12
	(25)	26,27,28,2	4	101.01	93.46	81.30	97.09	86.96	90.09	13
April/May	(1)	2,3,4,5,6	1	102.04	93.46	81.97	97.09	86.96	90.91	14
	(8)	9,10,11,12	2	104.17	97.09	84.75	100.00	90.09	93.46	15
	(15)	16,17,18,1	3	104.17	99.01	92.59	101.01	95.24	98.04	16
	(22)	23,24,25,2	4	103.09	96.15	87.72	99.01	91.74	94.34	17
	(29)	30,1,2,3,4	5	107.53	100.00	91.74	103.09	95.24	99.01	18
May/Jun	(6)	7,8,9,10,1	1	108.70	103.09	95.24	105.26	99.01	101.01	19
	(13)	14,15,16,1	2	107.53	102.04	97.09	104.17	99.01	102.04	20
	(20)	21,22,23,2	3	107.53	104.17	100.00	105.26	102.04	103.09	21
	(27)	28,29,30,3	4	112.36	107.53	105.26	109.89	106.38	108.70	22
Jun/Jul	(3)	4,5,6,7,8	1	111.11	107.53	107.53	108.70	107.53	108.70	23

	(10)	11,12,13,1	2	112.36	111.11	112.36	111.11	111.11	112.36	24
	(17)	18,19,20,2	3	112.36	112.36	121.95	112.36	116.28	116.28	25
	(24)	25,26,27,2	4	113.64	116.28	129.87	114.94	121.95	120.48	26
Jul/Aug	(1)	2,3,4,5,6	1	116.28	121.95	142.86	119.05	131.58	128.21	27
	(8)	9,10,11,12	2	114.94	119.05	135.14	116.28	126.58	123.46	28
	(15)	16,17,18,1	3	114.94	120.48	140.85	117.65	129.87	126.58	29
	(22)	23,24,25,2	4	116.28	121.95	144.93	119.05	131.58	128.21	30
	(29)	30,31,1,2,3	5	117.65	125.00	149.25	120.48	135.14	131.58	31
Aug/Sep	(5)	6,7,8,9,10	1	116.28	125.00	147.06	120.48	135.14	129.87	32
	(12)	13,14,15,1	2	116.28	123.46	142.86	119.05	131.58	128.21	33
	(19)	20,21,22,2	3	114.94	120.48	136.99	117.65	128.21	125.00	34
	(26)	27,28,29,3	4	109.89	113.64	120.48	111.11	116.28	114.94	35
September	(2)	3,4,5,6,7	1	109.89	109.89	112.36	109.89	111.11	111.11	36
	(9)	10,11,12,1	2	107.53	108.70	111.11	107.53	109.89	108.70	37
	(16)	17,18,19,2	3	107.53	109.89	108.70	108.70	108.70	107.53	38
	(23)	24,25,26,2	4	106.38	108.70	105.26	107.53	106.38	105.26	39
	(30)	1,2,3,4,5	1	107.53	112.36	111.11	109.89	111.11	108.70	40
Oct/Nov	(7)	8,9,10,11,1	2	107.53	108.70	104.17	107.53	106.38	105.26	41
	(14)	15,16,17,1	3	105.26	103.09	96.15	104.17	99.01	100.00	42
	(21)	22,23,24,2	4	102.04	98.04	89.29	100.00	93.46	95.24	43
	(28)	29,30,31,1	5	104.17	98.04	87.72	101.01	92.59	95.24	44
Nov/Dec	(4)	5,6,7,8,9	1	102.04	99.01	86.96	100.00	92.59	93.46	45
	(11)	12,13,14,1	2	101.01	98.04	84.75	99.01	90.91	91.74	46
	(18)	19,20,21,2	3	105.26	106.38	89.29	105.26	97.09	96.15	47
	(25)	26,27,28,2	4	100.00	94.34	82.64	97.09	87.72	90.09	48
December	(2)	3,4,5,6,7	1	98.04	91.74	78.74	94.34	84.75	86.96	49
	(9)	10,11,12,1	2	103.09	96.15	82.64	99.01	88.50	91.74	50
	(16)	17,18,19,2	3	106.38	100.00	84.75	103.09	91.74	94.34	51
	(23)	24,25,26,2	4	94.34	93.46	80.65	93.46	86.21	86.96	52

2007 Maine Transportation Count Book

County

Kennebec

TOWN	STATION	ROAD	LOCATION	TYPE	GROUP	AADT03	AADT04	AADT05	AADT06	AADT07
11 ALBION	35502	0009X	SR 9/137/US 202 NE/O IR 448 (BENTON RD)	C	II	.	.	.	4950	.
11 ALBION	35505	0009X	SR 9/137/US 202 S/O IR 1442	C	II	.	.	.	2400	.
11 ALBION	35702	0009X	SR 9/US 202 NE/O SR 137	C	II	1880	.	.	1980	.
11 ALBION	35707	0009X	SR 9/137/US 202 W/O SR 9/US 202	C	II	2980	.	.	2990	.
11 ALBION	96102	0009X	SR 9/137/US 202 NE/O IR 539 (ABBOTT RD)	C	II	2690	.	.	2690	.
11 ALBION	35507	00438	IR 438 (WINSLOW RD) W/O SR 9/137/US 202	C	I	.	.	.	1100	.
11 ALBION	35501	00448	IR 448 (BENTON RD) N/O SR 9/137/US 202	C	I	.	.	.	2010	.
11 ALBION	95904	00470	IR 470(S FREEDOM RD) SE/O IR 583(QUAKER)	C	I	550	.	.	560	.
11 ALBION	95908	00470	IR 470(S FREEDOM RD) NW/O IR 583(QUAKER)	C	I	540	.	.	490	.
11 ALBION	96004	00547	IR 547(HUSSEY RD) SE/O IR444(LIBBY HILL)	C	I	.	.	.	430	.
11 ALBION	35601	00553	IR 553 (E BENTON RD) N/O IR 448 (BENTON)	C	I	550	.	.	500	.
11 ALBION	35703	0137X	SR 137 E/O SR 9/US 202	C	I	1250	.	.	1460	.
11 AUGUSTA	01907		SLIP RAMP CUT TO WESTERN W/O AIRPORT RD	T	I	.	.	1880	.	.
11 AUGUSTA	11604	0003X	SR 3 SE/O SR 100/US 201 (RIVERSIDE DR)	C	I	.	.	7530	8790	.
11 AUGUSTA	11608	0003X	SR 3 NW/O SR 100/US 201 (RIVERSIDE DR)	C	I	.	.	14890	17410	.
11 AUGUSTA	11808	0003X	SR 3 NW/O SR 104 (W RIVER RD)	C	I	.	.	12760	15110	.
11 AUGUSTA	13403	0003X	SR 3/9/202 E/O CHURCH HILL RD @BR#2528	C	I	12090	11100	10610	11050	.
11 AUGUSTA	13407	0003X	SR 3/9/US 202 W/O CHURCH HILL RD	C	I	.	11180	12230	12710	.
11 AUGUSTA	13503	0003X	SR 3/9/US 202 E/O CROSS HILL RD	C	I	10480	.	.	9520	.
11 AUGUSTA	13602	0003X	SR 3/9/US 202 NE/O WEEKS MILLS RD	S	II	.	.	9000	.	.
11 AUGUSTA	02401	0008X	SR 8/11/27 (CVC CTR DR) N/O TOWNSEND RD	T	I	16790	.	15180	15110	14490
11 AUGUSTA	02405	0008X	SR 8/11/27 (CVC CTR DR) S/O TOWNSEND RD	T	I	17320	.	16280	16460	15450
11 AUGUSTA	02601	0008X	SR 8/11/27/104 (STATE) N/O CHANDLER ST	C	I	.	.	8760	10010	.
11 AUGUSTA	02605	0008X	SR 8/11/27/104 (SB)(STATE) S/O CHANDLER	S	I	.	.	7950	.	.
11 AUGUSTA	03001	0008X	SR 8/11/27/104 (STATE ST) N/O BRIDGE ST	T	I	.	.	11160	.	.
11 AUGUSTA	03005	0008X	SR 8/11/27/104 (STATE ST) S/O BRIDGE ST	T	I	.	.	11070	.	.
11 AUGUSTA	04805	0008X	SR 8/11/27 (CVC CTR DR) S/O I-95 SB RMPS	T	I	19090	.	18490	20210	20250
11 AUGUSTA	05401	0008X	SR 8/11/27 (MT VERNON) N/O BOND ST	C	I	18970	.	17690	16820	.
11 AUGUSTA	05405	0008X	SR 8/11/27/104 (STATE ST) S/O BOOTHBY ST	C	I	12520	.	11860	11450	.
11 AUGUSTA	05601	0008X	SR 8/11/27 (BELGRADE RD) N/O LEIGHTON RD	T	I	14490
11 AUGUSTA	05605	0008X	SR 8/11/27(CIVIC CTR DR) S/O LEIGHTON RD	T	I	12840
11 AUGUSTA	06001	0008X	SR 8/11/27/104 (STATE) N/O WINTHROP ST	T	I	.	.	10900	.	.
11 AUGUSTA	06005	0008X	SR 8/11/27/104 (STATE) S/O WINTHROP ST	C	I	10510	.	8330	9280	.
11 AUGUSTA	07605	0008X	SR 8/11/27/104 (STATE ST) S/O CHURCH ST	C	I	13200	.	11590	11480	.

County **2007 Maine Transportation Count Book**

Kennebec

TOWN	STATION	ROAD	LOCATION	TYPE	GROUP	AADT03	AADT04	AADT05	AADT06	AADT07
11 AUGUSTA	12808	0008X	SR 8/11/27(CVC CTR) NW/O OLD BELGRADE RD	C	I	10090	11100	9940	11350	.
11 AUGUSTA	13005	0008X	SR 8/11/27 (CIVIC CTR DR) S/O BOG RD	C	I	11890	13260	12360	12940	.
11 AUGUSTA	14201	0008X	SR 8/11/27(CVC CTR) N/O COMUNTY DR(NJCT)	T	I	21130
11 AUGUSTA	14205	0008X	SR 8/11/27(CVC CTR) S/O COMUNTY DR(NJCT)	T	I	16370
11 AUGUSTA	14301	0008X	SR 8/11/27 (CVC CTR DR) N/O DARIN DR	T	I	13260
11 AUGUSTA	14305	0008X	SR 8/11/27 (CVC CTR DR) S/O DARIN DR	T	I	16940
11 AUGUSTA	00901	0009X	SR 9/US 201/202 (BANGOR) N/O NOYES ST PL	C	I	25850	.	18340	18720	.
11 AUGUSTA	03405	0009X	SR 9 (HOSPITAL ST) S/O PIGGERY RD	C	I	12200	.	.	11630	.
11 AUGUSTA	03600	0009X	SR 9 (HOSPITAL ST) @ CHELSEA TL	C	I	.	.	.	10410	.
11 AUGUSTA	04403	0009X	SR 9/US 202 (N BELFAST AVE) E/O HICKS RD	S	I	.	11850	5650	.	.
11 AUGUSTA	06702	0009X	SR 9/US 201/202 (BANGOR) NE/O LINDEN ST	C	I	.	.	.	17900	.
11 AUGUSTA	07107	0009X	SR 9/US 202 (N BELFAST) W/O SPAULDING ST	C	I	12900	.	6450	6200	.
11 AUGUSTA	08004	0009X	SR 9/17 (STONE ST) SE/O MIDDLE ST	C	I	23480	.	24270	22060	.
11 AUGUSTA	08101	0009X	SR 9/17 (STONE ST) N/O CEDAR COURT	C	I	23690	.	.	22180	.
11 AUGUSTA	08205	0009X	SR 9 (HOSPITAL ST) S/O FIRST AVE	C	I	16190	.	.	14320	.
11 AUGUSTA	11902	0009X	SR 9/US 202 (N BELFAST) NE/O HEDGENETTLE	C	I	.	.	5240	5000	.
11 AUGUSTA	00113	0011W	SR 11/17/202(WESTERN)(WB) E/O WHITTEN RD	T	I	.	.	10970	.	.
11 AUGUSTA	00217	0011W	SR 11/17/202 (WESTERN)(WB) W/O STOREY ST	T	I	.	.	13260	.	.
11 AUGUSTA	00413	0011W	SR 11/17/202 (WESTERN)(WB) E/O ARMORY ST	T	I	.	.	12810	.	.
11 AUGUSTA	00417	0011W	SR 11/17/202 (WESTERN)(WB) W/O ARMORY ST	C	I	18350	.	17360	14330	.
11 AUGUSTA	00617	0011W	SR 11/17/202 (WESTERN)(WB) W/O SEWALL ST	C	I	13650	.	10420	9900	.
11 AUGUSTA	00717	0011W	SR 11/17/202(WESTERN)(WB) W/O ORCHARD ST	C	I	.	.	13560	12890	.
11 AUGUSTA	01913	0011W	SR 11/17/202(WESTERN)(WB) E/O AIRPT ENT	T	I	.	.	10490	.	.
11 AUGUSTA	02017	0011W	SR 11/17 (WESTERN)(WB) W/O AUGUSTA PLAZA	T	I	.	.	9990	.	.
11 AUGUSTA	06514	0011W	SR 11/17/202(WESTERN)(WB) SE/O EDISON DR	C	I	14920	.	12940	13890	.
11 AUGUSTA	06518	0011W	SR 11/17/202(WESTERN)(WB) NW/O EDISON DR	T	I	.	.	13100	.	.
11 AUGUSTA	00103	0011X	SR 11/17/202(WESTERN)(EB) E/O WHITTEN RD	T	I	.	.	16690	.	.
11 AUGUSTA	00107	0011X	SR 11/17/202(WESTERN)(EB) W/O WHITTEN RD	T	I	.	.	14350	.	.
11 AUGUSTA	00403	0011X	SR 11/17/202 (WESTERN)(EB) E/O ARMORY ST	T	I	.	.	13500	.	.
11 AUGUSTA	00407	0011X	SR 11/17(WESTERN)(EB) W/O ARMORY/MALL EN	C	I	18700	.	17570	14830	.
11 AUGUSTA	00603	0011X	SR 11/17/202 (WESTERN AVE) E/O SEWALL ST	T	I	.	.	23740	.	.
11 AUGUSTA	00607	0011X	SR 11/17/202 (WESTERN)(EB) W/O SEWALL ST	T	I	14640	.	12260	.	.
11 AUGUSTA	00703	0011X	SR 11/17/202(WESTERN)(EB) E/O ORCHARD ST	T	I	.	.	17380	.	.
11 AUGUSTA	00707	0011X	SR 11/17/202(WESTERN)(EB) W/O ORCHARD ST	C	I	16880	.	15190	13470	.

County **2007 Maine Transportation Count Book**

Kennebec

TOWN	STATION	ROAD	LOCATION	TYPE	GROUP	AADT03	AADT04	AADT05	AADT06	AADT07
11 AUGUSTA	01903	0011X	SR 11/17/202(WESTERN)(EB) E/O AIRPRT RD	T	I	.	.	10720	.	.
11 AUGUSTA	02007	0011X	SR 11/17 (WESTERN)(EB) W/O AUGUSTA PLAZA	T	I	.	.	10680	.	.
11 AUGUSTA	03207	0011X	SR 11/17/202(WESTERN) W/O W TRAFFIC CIR	C	I	28750	.	21040	20040	.
11 AUGUSTA	03803	0011X	SR 11/17/202(WESTERN) E/O PRESCOTT RD	C	I	23450	.	.	21420	.
11 AUGUSTA	03807	0011X	SR 11/17/202(WESTERN) W/O PRESCOTT RD	C	I	.	.	.	20260	.
11 AUGUSTA	06504	0011X	SR 11/17/202(WESTERN)(EB) SE/O EDISON DR	C	I	14150	.	15060	13180	.
11 AUGUSTA	06508	0011X	SR 11/17/202(WESTERN)(EB) NW/O EDISON DR	T	I	.	.	12820	.	.
11 AUGUSTA	07003	0011X	SR 11/17/202(WESTERN AVE) E/O SHUMAN AVE	T	I	.	.	24900	.	.
11 AUGUSTA	07007	0011X	SR 11/17/202(WESTERN AVE) W/O SHUMAN AVE	T	I	.	.	23900	.	.
11 AUGUSTA	08707	0011X	SR 11/17/202 (WESTERN) W/O WESTERN AV PL	C	I	26490	.	.	19460	.
11 AUGUSTA	02303	0017X	SR 17 (EASTERN AVE) E/O SR 9 (HOSPITAL)	C	I	13700	.	.	12890	.
11 AUGUSTA	02307	0017X	SR 17(EASTERN AVE) W/O SR 9/17(STONE ST)	C	I	2180	.	.	1620	.
11 AUGUSTA	04103	0017X	SR 17 (EASTERN AVE) E/O CONY RD	C	I	10820	.	10670	10570	.
11 AUGUSTA	04107	0017X	SR 17 (EASTERN AVE) W/O CONY RD	C	I	12510	.	11770	11520	.
11 AUGUSTA	14004	0017X	SR 17 (EASTERN AVE) SE/O SPRING RD	C	I	.	.	.	8400	.
11 AUGUSTA	14008	0017X	SR 17 (EASTERN AVE) NW/O SPRING RD	S	I	.	.	10090	.	.
11 AUGUSTA	00305	0027X	SR 27/US 201 (STATE ST) S/O CAPITOL ST	T	I	.	.	13730	.	.
11 AUGUSTA	02205	0027X	SR 27/US 201 (STATE ST) S/O UNION ST	T	I	15570	.	13150	.	.
11 AUGUSTA	07201	0027X	SR 27/US 201 (STATE ST) N/O CHILD ST	C	I	16520	.	14040	16010	.
11 AUGUSTA	08301	0027X	SR 27/US 201 N/O KING ST	T	I	.	.	12130	.	.
11 AUGUSTA	08305	0027X	SR 27/US 201 (STATE ST) S/O KING ST	C	I	14770	.	11310	13010	.
11 AUGUSTA	12703	00356	SUMMERHAVEN DR E/O SANFORD RD	C	I	1780	.	.	2270	.
11 AUGUSTA	13604	00372	WEEKS MILLS RD SE/O SR 3/9/US 202	C	I	.	.	.	1660	.
11 AUGUSTA	13207	00374	STEVENS RD W/O CHURCH HILL RD	C	I	1010
11 AUGUSTA	13202	00433	CHURCH HILL RD NE/O STEVENS RD	C	I	920
11 AUGUSTA	13401	00433	CHURCH HILL RD N/O SR 3/9/US 202	C	I	1700	.	1420	1500	.
11 AUGUSTA	13405	00433	CHURCH HILL RD S/O SR 3/9/US 202	C	I	3370	3320	4820	4790	.
11 AUGUSTA	14002	00435	SPRING RD NE/O SR 17 (EASTERN AVE)	C	I	1440	.	.	1510	.
11 AUGUSTA	14006	00435	SPRING RD SW/O SR 17 (EASTERN AVE)	C	I	2510	.	.	2510	.
11 AUGUSTA	13502	00439	CROSS HILL RD NE/O SR 3/9/US 202	C	I	690	.	.	560	.
11 AUGUSTA	13701	00439	BOLTON HILL RD N/O SR 105 (S BELFAST AV)	C	I	1050	.	.	970	.
11 AUGUSTA	13902	00449	WARD RD NE/O SR 105 (S BELFAST AVE)	C	I	.	.	.	480	.
11 AUGUSTA	53202	0095S	I-95 (SB) N/O ON RAMP FROM CIVIC CTR(SB)	I	ATR53104	10250	.	12700	.	12930
11 AUGUSTA	53204	0095S	I-95 (SB) N/O OFF RAMP TO CIVIC CTR DR	I	ATR53104	13260	.	16560	.	17120

2007 Maine Transportation Count Book

Kennebec

TOWN	STATION	ROAD	LOCATION	TYPE	GROUP	AADT03	AADT04	AADT05	AADT06	AADT07
11 AUGUSTA	53302	0095S	I-95 (SB) N/O ON RAMP FROM WESTERN AVE	I	ATR53104	9800	.	11370	.	11500
11 AUGUSTA	53304	0095S	I-95 (SB) N/O OFFRAMP TO WESTERN AVE(EB)	I	ATR52104	12270	.	13260	.	.
11 AUGUSTA	53306	0095S	I-95 (SB) N/O OFFRAMP TO WESTERN AVE(WB)	I	ATR53104	14800	.	16490	.	17250
11 AUGUSTA	53314	0095S	I-95 (SB) S/O ON RAMP FROM WESTERN AVE	I	ATR53104	14540	.	15030	.	15500
11 AUGUSTA	55102	0095S	I-95 (SB) N/O ON RAMP FROM SR 3	I	ATR53104	.	.	12560	.	12470
11 AUGUSTA	55104	0095S	I-95 (SB) N/O OFF RAMP TO SR 3	I	ATR53104	.	.	13850	.	14690
11 AUGUSTA	53201	0095X	I-95 (NB) N/O OFF RAMP TO CIVIC CTR (SB)	I	ATR53103	11930	.	13770	.	14000
11 AUGUSTA	53203	0095X	I-95 (NB) N/O OFF RAMP TO CIVIC CTR (NB)	I	ATR53103	9940	.	12130	.	12260
11 AUGUSTA	53205	0095X	I-95 (NB) N/O ONRAMP FROM CIVIC CTR (NB)	I	ATR53103	13300	.	16270	.	16800
11 AUGUSTA	53301	0095X	I-95 (NB) N/O OFF RAMP TO WESTERN AVE	I	ATR53103	9500	.	10990	.	10880
11 AUGUSTA	53303	0095X	I-95 (NB) N/O ON RAMP FROM WESTERN AVE	I	ATR53103	14300	.	16070	.	16590
11 AUGUSTA	53317	0095X	I-95 (NB) S/O OFFRAMP TO WESTERN AVE	I	ATR53103	14780	.	14960	.	15280
11 AUGUSTA	55101	0095X	I-95 (NB) N/O OFF RAMP TO SR 3	I	ATR53103	.	.	12230	.	12000
11 AUGUSTA	55103	0095X	I-95 (NB) N/O ON RAMP FROM SR 3	I	ATR53103	.	.	13430	.	14230
11 AUGUSTA	00500	0100X	SR 17/100/US 201/202 ON MEMORIAL BRIDGE	C	I	29910	.	.	22370	.
11 AUGUSTA	00802	0100X	SR 100/US 201 (RIVERSIDE) NE/O LAJOIE ST	C	I	9290	.	9010	9360	.
11 AUGUSTA	01100	0100X	SR 100/US 201(RIVERSIDE) @ VASSALBORO TL	C	I	6060	.	5200	5680	.
11 AUGUSTA	04301	0100X	SR 100/US 201 (BANGOR ST) N/O LOCKE ST	S	I	.	.	11990	.	.
11 AUGUSTA	04701	0100X	SR 100/US201(RIVERSIDE) N/O HIGHLAND AVE	C	I	12130	12470	11440	11790	.
11 AUGUSTA	10901	0100X	SR 100/US 201 (BANGOR ST) N/O PRINCE ST	S	I	.	.	12280	.	.
11 AUGUSTA	11005	0100X	SR 100/US 201 (BANGOR) S/O NEWLAND AVE	C	I	.	.	12060	12000	.
11 AUGUSTA	11602	0100X	SR 100/US 201 (RIVERSIDE) NE/O SR 3	C	I	.	.	10490	10780	.
11 AUGUSTA	05001	0104X	SR 104 (W RIVER RD) N/O OLD BELGRADE RD	C	I	3330	.	5530	6220	.
11 AUGUSTA	05101	0104X	SR 104 (W RIVER RD) N/O TOWNSEND RD	C	I	.	7740	7090	6930	.
11 AUGUSTA	05105	0104X	SR 104 (NORTHERN AVE) S/O TOWNSEND RD	C	I	12630	11980	7960	7440	.
11 AUGUSTA	05403	0104X	BOND ST E/O SR 8/11/27 (MT VERNON)	C	I	9790	.	7890	7280	.
11 AUGUSTA	07708	0104X	SR 104 (NORTHERN AVE) NW/O WASHINGTON ST	C	I	12220	.	.	7410	.
11 AUGUSTA	07808	0104X	SR 104 (NORTHERN AVE) NW/O OXFORD ST	C	I	11110	.	.	7100	.
11 AUGUSTA	07905	0104X	SR 104 (NORTHERN AVE) S/O MONROE ST	C	I	11510	.	.	7380	.
11 AUGUSTA	10406	0104X	SR 104 (W RIVER RD) SW/O PATRICK ST	C	I	2140	.	2410	2410	.
11 AUGUSTA	11806	0104X	SR 104 (W RIVER RD) SW/O SR 3	C	I	.	.	5260	6670	.
11 AUGUSTA	13100	0104X	SR 104 (W RIVER RD) @ SIDNEY TL	C	I	.	.	1500	1540	.
11 AUGUSTA	01003	0105X	SR 105 (CONY ST) E/O EAST TRAFFIC CIRCLE	C	I	7340	.	7140	6010	.
11 AUGUSTA	01303	0105X	SR 105 (S BELFAST AVE) E/O CONY RD	C	I	.	.	.	3080	.

2007 Maine Transportation Count Book

Kennebec

TOWN	STATION	ROAD	LOCATION	TYPE	GROUP	AADT03	AADT04	AADT05	AADT06	AADT07
11 AUGUSTA	01307	0105X	SR 105 (S BELFAST AVE) W/O CONY RD	C	I	.	.	.	2880	.
11 AUGUSTA	02102	0105X	SR 105 (S BELFAST AVE) NE/O CONY ST EXT	C	I	3670	.	.	2940	.
11 AUGUSTA	07403	0105X	SR 105 (CONY ST) E/O VILES ST	C	I	6000	.	.	5280	.
11 AUGUSTA	13803	0105X	SR 105 (S BELFAST AVE) E/O SPRING RD	C	I	.	.	.	2040	.
11 AUGUSTA	13903	0105X	SR 105 (S BELFAST AVE) E/O WARD RD @ TL	C	I	1530	.	.	1300	.
11 AUGUSTA	12902	02281	BOG RD NE/O OLD BELGRADE RD	C	I	2230	2650	2020	2110	.
11 AUGUSTA	12906	02281	BOG RD SW/O OLD BELGRADE RD	S	I	.	3160	2610	.	.
11 AUGUSTA	12904	02283	OLD BELGRADE RD SE/O BOG RD	C	I	3630	3300	3000	3010	.
11 AUGUSTA	12907	02283	OLD BELGRADE RD W/O BOG RD	S	I	.	.	2140	.	.
11 AUGUSTA	12706	03718	SANFORD RD SW/O SUMMERHAVEN DR	C	I	590	.	.	940	.
11 AUGUSTA	10500	03798	CONY RD @ CHELSEA TL	C	I	2070	.	.	1950	.
11 AUGUSTA	01901	10001	AIRPORT RD N/O MULLIKEN COURT	C	I	5360	.	4910	4470	.
11 AUGUSTA	00405	10005	ARMORY ST S/O SR 11/17/202 (WESTERN AVE)	C	I	7780	.	8770	7540	.
11 AUGUSTA	04205	10006	ARSENAL ST S/O EASTERN AVE	C	I	1480
11 AUGUSTA	08505	10006	ARSENAL ST S/O CONY ST	C	I	.	.	.	6110	.
11 AUGUSTA	01401	10015	BLAINE AVE N/O MULLIKEN COURT	C	I	540	.	.	510	.
11 AUGUSTA	05406	10018	BOOTHBY ST SW/O SR 8/11/27 (STATE ST)	S	I	.	.	570	.	.
11 AUGUSTA	03003	10025	BRIDGE ST E/O SR 8/11/27/104 (STATE ST)	C	I	3800	.	3250	2850	.
11 AUGUSTA	03007	10025	BRIDGE ST W/O SR 8/11/27/104 (STATE ST)	C	I	.	.	2870	2740	.
11 AUGUSTA	07507	10025	WINTHROP ST W/O PLEASANT ST	C	I	7610	.	.	6300	.
11 AUGUSTA	00303	10034	CAPITOL ST E/O SR 27/US 201 (STATE ST)	T	I	.	.	1100	.	.
11 AUGUSTA	00307	10034	CAPITOL ST W/O SR 27/US 201 (STATE ST)	C	I	7680	.	6830	8410	.
11 AUGUSTA	02703	10034	CAPITOL ST E/O SEWALL ST	T	I	.	.	6790	.	.
11 AUGUSTA	05503	10034	CAPITOL ST E/O ARMORY ST	C	I	9330	.	.	8840	.
11 AUGUSTA	10607	10034	CAPITOL ST W/O FEDERAL ST	C	I	11660	.	10210	11570	.
11 AUGUSTA	12503	10038	CEDAR ST E/O MIDDLE ST	C	I	.	.	.	320	.
11 AUGUSTA	12507	10038	CEDAR ST W/O MIDDLE ST	C	I	.	.	.	240	.
11 AUGUSTA	09601	10040	CHAPEL ST N/O SR 11/17/202 (WESTERN AVE)	C	I	1120	.	.	960	.
11 AUGUSTA	07203	10044	CHILD ST E/O SR 27/US 201	T	I	.	.	760	.	.
11 AUGUSTA	01305	10050	CONY RD S/O SR 105 (S BELFAST)	C	I	3660	3860	4630	4650	.
11 AUGUSTA	04101	10050	CONY RD N/O SR 17 (EASTERN AVE)	C	I	5000	4460	5350	6030	.
11 AUGUSTA	04105	10050	CONY RD S/O SR 17 (EASTERN AVE)	C	I	3320	.	2730	3320	.
11 AUGUSTA	02903	10051	CONY ST E/O WILLOW ST	C	I	22790	.	.	15490	.
11 AUGUSTA	04000	10051	CONY ST @ FATHER CURRAN BR	C	I	22540	.	.	14900	.

2007 Maine Transportation Count Book

Kennebec

TOWN	STATION	ROAD	LOCATION	TYPE	GROUP	AADT03	AADT04	AADT05	AADT06	AADT07
11 AUGUSTA	02103	10052	CONY ST EXT E/O SR 105 (S BELFAST AVE)	C	I	.	.	.	3080	.
11 AUGUSTA	04607	10052	CONY ST EXT W/O CONY RD	C	I	.	.	.	1760	.
11 AUGUSTA	07304	10052	CONY ST EXT SE/O HASKELL ST	C	I	.	.	.	2550	.
11 AUGUSTA	07308	10052	CONY ST EXT NW/O HASKELL ST	C	I	2420	.	.	2640	.
11 AUGUSTA	08103	10057	CROOKER ST E/O SR 9/17 (STONE ST)	C	I	310	.	.	310	.
11 AUGUSTA	12307	10061	CROSS ST W/O SR 9/17 (STONE ST)	C	I	.	.	.	100	.
11 AUGUSTA	08601	10065	CUSHMAN ST N/O SR 11/17/202(WESTERN AVE)	C	I	840	.	.	720	.
11 AUGUSTA	12603	10066	DAVENPORT ST E/O SR 9/17 (STONE ST)	C	I	.	.	.	340	.
11 AUGUSTA	09703	10074	E CHESTNUT ST E/O ARSENAL ST	C	I	.	.	.	2390	.
11 AUGUSTA	12403	10074	E CHESTNUT ST E/O MIDDLE ST	C	I	.	.	.	700	.
11 AUGUSTA	12407	10074	E CHESTNUT ST W/O MIDDLE ST	C	I	.	.	.	2610	.
11 AUGUSTA	04203	10077	EASTERN AVE E/O ARSENAL ST	C	I	1760	.	.	1160	.
11 AUGUSTA	06506	10079	EDISON DR SW/O SR 11/17/202(WESTERN)(EB)	C	I	3270	.	5800	3810	.
11 AUGUSTA	11303	10081	ELM AVE E/O SPAULDING ST	S	I	.	.	80	.	.
11 AUGUSTA	11307	10081	ELM AVE W/O WHITE ST	S	I	.	.	180	.	.
11 AUGUSTA	10605	10088	FEDERAL ST S/O CAPITOL ST	T	I	.	.	150	.	.
11 AUGUSTA	01201	10102	FULLER RD N/O CUT TO MEADOW RD	T	I	330	.	240	.	.
11 AUGUSTA	01205	10102	FULLER RD S/O REVERSE DIRECTION CUT	T	I	.	.	600	.	.
11 AUGUSTA	01805	10104	GAGE ST S/O SWAN ST	C	I	1700	.	1660	1700	.
11 AUGUSTA	10207	10115	GLENWOOD ST W/O SR 27/US 201 (STATE ST)	C	I	490	.	.	510	.
11 AUGUSTA	02507	10119	GREEN ST (OW) W/O GROVE ST	C	I	530	.	.	480	.
11 AUGUSTA	08907	10119	GREEN ST W/O SR 8/11/27/104 (STATE ST)	C	I	1040	.	.	1080	.
11 AUGUSTA	09007	10119	GREEN ST W/O SEWALL ST	C	I	1070	.	.	1030	.
11 AUGUSTA	09303	10119	GREEN ST E/O BLAINE AVE	C	I	360	.	.	340	.
11 AUGUSTA	03706	10124	GROVE ST SW/O SWAN ST	C	I	5940	.	6290	6230	.
11 AUGUSTA	04404	10130	HICKS RD SE/O SR 9/US 202(N BELFAST AVE)	C	I	.	.	1050	890	.
11 AUGUSTA	04703	10133	HIGHLAND AVE E/O SR 100/US 201 (BANGOR)	S	I	.	.	220	.	.
11 AUGUSTA	11501	10137	HORTON ST N/O LONGWOOD AVE	S	I	.	.	50	.	.
11 AUGUSTA	10801	10143	JAMES ST N/O SR 9/US 202 (N BELFAST AVE)	S	I	.	.	50	.	.
11 AUGUSTA	08307	10154	KING ST W/O SR 27/US 201	T	I	.	.	870	.	.
11 AUGUSTA	09203	10154	KING ST E/O SEWALL ST	C	I	1040	.	.	900	.
11 AUGUSTA	03908	10162	LEIGHTON RD NW/O OLD WINTHROP RD	C	I	.	.	.	7410	.
11 AUGUSTA	05906	10162	LEIGHTON RD SW/O BOND BROOK RD @ BR#5747	C	I	5760	.	.	6550	.
11 AUGUSTA	09407	10163	LINCOLN ST W/O JOHNSON ST	C	I	320	.	.	280	.

2007 Maine Transportation Count Book

County

Kennebec

TOWN	STATION	ROAD	LOCATION	TYPE	GROUP	AADT03	AADT04	AADT05	AADT06	AADT07
11 AUGUSTA	09503	10163	LINCOLN ST E/O DAYTON ST	C	I	540	.	.	470	.
11 AUGUSTA	11203	10167	LONGWOOD AVE E/O WHITE ST	S	I	.	.	160	.	.
11 AUGUSTA	11207	10167	LONGWOOD AVE W/O WHITE ST	S	I	.	.	300	.	.
11 AUGUSTA	09805	10176	MAYFAIR ST S/O SR 17 (EASTERN AVE)	C	I	690	.	.	760	.
11 AUGUSTA	00701	10178	MEADOW RD N/O SR 11/17/202 (WESTERN AVE)	T	I	.	.	5660	.	.
11 AUGUSTA	01208	10178	MEADOW RD NW/O CUT TO FULLER RD	C	I	3940	.	4040	3680	.
11 AUGUSTA	08005	10180	MIDDLE ST S/O SR 9/17 (STONE ST)	C	I	1910	.	.	2200	.
11 AUGUSTA	12401	10180	MIDDLE ST N/O E CHESTNUT ST	C	I	.	.	.	1850	.
11 AUGUSTA	12405	10180	MIDDLE ST S/O E CHESTNUT ST	C	I	.	.	.	1380	.
11 AUGUSTA	12501	10180	MIDDLE ST N/O CEDAR ST	C	I	.	.	.	840	.
11 AUGUSTA	12505	10180	MIDDLE ST S/O CEDAR ST	C	I	.	.	.	660	.
11 AUGUSTA	07903	10183	MONROE ST E/O SR 104 (NORTHERN AVE)	C	I	630	.	.	710	.
11 AUGUSTA	01407	10187	MULLIKEN COURT W/O BLAINE AVE	C	I	310
11 AUGUSTA	01904	10187	MULLIKEN COURT SE/O AIRPORT RD	S	I	340	.	430	.	.
11 AUGUSTA	12203	10189	MURRAY ST E/O PEARL ST	C	I	.	.	.	220	.
11 AUGUSTA	12207	10189	MURRAY ST W/O PEARL ST	C	I	.	.	.	250	.
11 AUGUSTA	11003	10191	NEWLAND AVE E/O SR 100/US 201 (BANGOR)	S	I	.	.	200	.	.
11 AUGUSTA	11407	10191	NEWLAND AVE W/O PINEHURST ST	S	I	.	.	110	.	.
11 AUGUSTA	01501	10192	N CHESTNUT ST N/O WINTHROP ST	C	I	670	.	.	600	.
11 AUGUSTA	05008	10200	OLD BELGRADE RD NW/O SR 104 (W RIVER)	C	I	4520	4160	4180	3890	.
11 AUGUSTA	10708	10200	OLD BELGRADE RD NW/O EIGHT ROD RD @ BR	S	I	.	3040	2880	.	.
11 AUGUSTA	03903	10201	OLD WINTHROP RD E/O LEIGHTON RD @BR#5788	C	I	3560	.	.	3410	.
11 AUGUSTA	03906	10201	OLD WINTHROP RD SW/O LEIGHTON RD	C	I	4800	.	.	5130	.
11 AUGUSTA	10303	10201	OLD WINTHROP RD E/O WILDWOOD RD	S	I	.	.	.	3450	.
11 AUGUSTA	00705	10203	ORCHARD ST S/O SR 11/17/202(WESTERN AVE)	C	I	1520	.	2130	1280	.
11 AUGUSTA	12005	10205	PAGE ST S/O CAPITOL ST	T	I	.	.	140	.	.
11 AUGUSTA	07401	10209	PEARL ST N/O SR 105 (CONY ST)	C	I	.	.	.	560	.
11 AUGUSTA	12201	10209	PEARL ST N/O MURRAY ST	C	I	.	.	.	520	.
11 AUGUSTA	12205	10209	PEARL ST S/O MURRAY ST	C	I	.	.	.	430	.
11 AUGUSTA	09901	10210	PENLEY ST N/O SR 17 (EASTERN AVE)	C	I	130	.	.	140	.
11 AUGUSTA	11401	10215	PINEHURST ST N/O NEWLAND AVE	S	I	.	.	170	.	.
11 AUGUSTA	11405	10215	PINEHURST ST S/O NEWLAND AVE	S	I	.	.	320	.	.
11 AUGUSTA	03808	10220	PRESCOTT RD NW/O SR 11/17/202 (WESTERN)	C	I	1400	.	.	1180	.
11 AUGUSTA	00601	10239	SEWALL ST N/O SR 11/17/202 (WESTERN AVE)	C	I	5030	.	4860	3400	.

2007 Maine Transportation Count Book

Kennebec

TOWN	STATION	ROAD	LOCATION	TYPE	GROUP	AADT03	AADT04	AADT05	AADT06	AADT07
11 AUGUSTA	00605	10239	SEWALL ST S/O SR 11/17/202 (WESTERN AVE)	T	I	.	.	6650	.	.
11 AUGUSTA	02701	10239	SEWALL ST N/O CAPITOL ST	C	I	6520	.	5300	5640	.
11 AUGUSTA	02705	10239	SEWALL ST S/O CAPITOL ST	C	I	8250	.	6880	6950	.
11 AUGUSTA	08405	10239	SEWALL ST S/O WINTHROP ST	C	I	3640	.	.	2610	.
11 AUGUSTA	09105	10239	SEWALL ST S/O SOUTH ST @ HALLOWELL TL	C	I	5100	.	.	4400	.
11 AUGUSTA	10103	10241	SIXTH AVE E/O SR 9 (HOSPITAL ST)	C	I	570	.	.	570	.
11 AUGUSTA	01505	10243	S CHESTNUT ST S/O WINTHROP ST	C	I	1220	.	.	910	.
11 AUGUSTA	02002	10243	S CHESTNUT ST NE/O SR 11/17/100/202 (WB)	C	I	830	.	520	710	.
11 AUGUSTA	09103	10246	SOUTH ST E/O SEWALL ST	C	I	360
11 AUGUSTA	07108	10247	SPAULDING ST NW/O SR 9/US 202(N BELFAST)	S	I	.	.	230	.	.
11 AUGUSTA	00205	10256	STOREY ST S/O SR 11/17/202(WESTERN)(EB)	T	I	.	.	860	.	.
11 AUGUSTA	02403	10266	TOWNSEND RD E/O SR 8/11/27 (CVC CTR DR)	T	I	7280	.	8160	8080	7690
11 AUGUSTA	05108	10266	TOWNSEND RD NW/O SR 104 (NORTHERN AVE)	S	I	8710	8390	6610	6590	6300
11 AUGUSTA	02203	10271	UNION ST E/O SR 27/US 201 (STATE ST)	T	I	2500	.	1940	.	.
11 AUGUSTA	07701	10288	WASHINGTON ST N/O SR 104 (NORTHERN AVE)	C	I	1610
11 AUGUSTA	12101	10288	WASHINGTON ST N/O WASHINGTON ST PL	C	I	.	.	.	1510	.
11 AUGUSTA	02801	10290	WATER ST N/O BRIDGE ST	C	I	21590	.	.	12900	.
11 AUGUSTA	02805	10290	WATER ST (OW) S/O BRIDGE ST	C	I	7420	.	.	6310	.
11 AUGUSTA	11201	10298	WHITE ST N/O LONGWOOD AVE	S	I	.	.	60	.	.
11 AUGUSTA	11205	10298	WHITE ST S/O LONGWOOD AVE	S	I	.	.	60	.	.
11 AUGUSTA	11301	10298	WHITE ST N/O ELM AVE	S	I	.	.	100	.	.
11 AUGUSTA	00105	10299	WHITTEN RD S/O SR 11/17/202(WESTERN AVE)	T	I	11780	.	11380	.	.
11 AUGUSTA	11706	10299	WHITTEN RD SW/O TURNPIKE MALL ENT/EXIT	C	I	.	.	4050	4540	.
11 AUGUSTA	08401	10304	WINTER ST N/O WINTHROP ST	C	I	1340	.	.	840	.
11 AUGUSTA	01503	10306	WINTHROP ST E/O N CHESTNUT ST	C	I	5490	.	.	4650	.
11 AUGUSTA	01507	10306	WINTHROP ST W/O S CHESTNUT ST	C	I	5160	.	.	4490	.
11 AUGUSTA	06003	10306	WINTHROP ST E/O SR 8/11/27/104 (STATE)	T	I	.	.	3380	.	.
11 AUGUSTA	06007	10306	WINTHROP ST W/O SR 8/11/27/104 (STATE)	T	I	.	.	6300	.	.
11 AUGUSTA	03505	10309	WORCHESTER ST S/O SR 11/17/US 202 (EB)	C	I	550	.	.	480	.
11 AUGUSTA	06407	10316	GATEWAY BLVD (AMHI ENT #3) W/O SR 9	C	I	.	.	.	1880	.
11 AUGUSTA	10005	10336	LAMBARD RD S/O SR 17 (EASTERN AVE)	C	I	480	.	.	490	.
11 AUGUSTA	05506	10342	PARKWOOD DR SW/O CAPITAL ST EXT	C	I	580	.	.	560	.
11 AUGUSTA	05507	10349	CAPITOL ST EXT W/O PARKWOOD DR	C	I	2700	.	.	2570	.
11 AUGUSTA	08808	10361	ALDEN AVE NW/O CAPITOL ST EXT	C	I	1580	.	.	1490	.

2007 Maine Transportation Count Book

Kennebec

TOWN	STATION	ROAD	LOCATION	TYPE	GROUP	AADT03	AADT04	AADT05	AADT06	AADT07
11 AUGUSTA	05207	10364	BOND BROOK RD W/O SR 8/11/27 (CIVIC CTR)	S	I	.	2470	2500	.	.
11 AUGUSTA	05607	10364	LEIGHTON RD W/O SR 8/11/27(CIVIC CTR DR)	T	I	2960	.	.	3510	3530
11 AUGUSTA	05802	10364	LEIGHTON RD NE/O MT VERNON RD	S	I	.	.	4600	.	.
11 AUGUSTA	05901	10364	LEIGHTON RD N/O BOND BROOK RD	C	I	5160	.	.	6010	.
11 AUGUSTA	05904	10364	BOND BROOK RD SE/O LEIGHTON RD@N BR#5787	C	I	2660	2340	.	2520	.
11 AUGUSTA	02407	10366	COMMUNITY DR W/O SR8/11/27(CVC CTR)S JCT	T	I	1390
11 AUGUSTA	14207	10366	COMMUNITY DR W/O SR8/11/27(CVC CTR)N JCT	T	I	2730
11 AUGUSTA	14307	10505	DARIN DR W/O SR 8/11/27 (CIVIC CTR DR)	T	I	6000
11 AUGUSTA	05801	10507	MT VERNON RD N/O LEIGHTON RD	C	I	800	.	.	850	.
11 AUGUSTA	00201	10509	KJ JUGHANDLE N/O SR 11/17 (WESTERN) (WB)	T	I	.	.	830	.	.
11 AUGUSTA	02005	Z0014	AUGUSTA PLAZA S/O SR 11/17 (WESTERN)(EB)	T	I	.	.	4680	.	.
11 AUGUSTA	07001	Z0033	SHUMAN AVE N/O SR 11/17/202(WESTERN AVE)	T	I	.	.	1700	.	.
11 BELGRADE	39304	0008X	SR 8 SE/O IR 371(MCGRATH POND RD)	C	II	1940	.	.	1840	.
11 BELGRADE	52401	0008X	SR 8 N/O IR 1220 (WILDER RD)	C	II	2350	.	.	1960	.
11 BELGRADE	52506	0008X	SR 8/11 SW/O SR 135	C	II	2380	.	.	2340	.
11 BELGRADE	93905	0008X	SR 8/11/27 S/O IR 1375 @ BR# 2062	S	II	.	.	.	6570	.
11 BELGRADE	52402	0011X	SR 11 NE/O SR 8	C	II	2680	.	.	3020	.
11 BELGRADE	52001	0027X	SR 27 N/O IR 725 (HULIN RD) @BR# 2063	C	II	4030	.	.	4690	.
11 BELGRADE	52604	0027X	SR 27 SE/O SR 135	C	II	4200	.	.	5120	.
11 BELGRADE	52608	0027X	SR 27 NW/O SR 135	C	II	5580	.	.	6230	.
11 BELGRADE	93604	0027X	SR 27 SE/O IR 2667 (CASTLE ISLAND RD)	C	II	4800	.	.	5590	.
11 BELGRADE	93608	0027X	SR 27 NW/O IR 2667	C	II	3790	.	.	4300	.
11 BELGRADE	39403	00331	IR 331 (MINOT HILL RD) E/O SR 135	C	II	650
11 BELGRADE	39407	00331	IR 331 (WEST RD) W/O SR 135	C	I	820	.	.	760	.
11 BELGRADE	49804	00784	IR 784 (WEST RD) SE/O IR 2589 (DUNN RD)	C	I	660	.	.	580	.
11 BELGRADE	39401	0135X	SR 135 N/O IR 331 (MINOT HILL RD)	C	II	1520	.	.	1350	.
11 BELGRADE	39405	0135X	SR 135 S/O IR 331 (WEST RD)	C	II	1640
11 BELGRADE	39500	0135X	SR 135 (BELGRADE RD) @ MANCHESTER TL	C	II	1590	.	.	1330	.
11 BELGRADE	52508	0135X	SR 135 NW/O SR 8/11	C	II	2560	.	.	2420	.
11 BELGRADE	49708	01375	IR 1375 (DEPOT RD) NW/O IR 331	C	I	.	.	.	350	.
11 BELGRADE	93908	01375	IR 1375 (DEPOT RD) NW/O SR 8/11/27	C	II	1480
11 BELGRADE	52005	02589	IR 2589 (WEST RD) S/O IR 1793 (PW)	C	III	760	.	.	610	.
11 BELGRADE	51903	02667	IR 2667 (CASTLE ISLAND RD) E/O IR 2589	C	II	1730	.	.	1630	.
11 BELGRADE	51907	02667	IR 2667 (CASTLE ISLAND RD) W/O IR 2589	C	II	1780	.	.	1690	.

2007 Maine Transportation Count Book

County

Kennebec

TOWN	STATION	ROAD	LOCATION	TYPE	GROUP	AADT03	AADT04	AADT05	AADT06	AADT07
11 BENTON	00303	0011X	SR 11/100/139 (BRIDGE ST) E/O BENTON AVE	C	I	8120	.	.	8660	.
11 BENTON	00307	0011X	SR 11/100/139 (BRIDGE ST) W/O BENTON AVE	C	I	11330	.	.	12010	.
11 BENTON	36407	0011X	SR 11/100/139 W/O IR 1344 (LIBBY ST)	C	I	7860	.	.	8280	.
11 BENTON	37005	0011X	SR 11/100 S/O IR 565 (BELLSQUEEZE RD)	C	I	3920	.	.	3730	.
11 BENTON	36803	00450	IR 450 (ALBION RD) E/O IR 467 (FALLS RD)	C	I	3210	.	.	3180	.
11 BENTON	36806	00467	IR 467 (FALLS RD) SW/O IR 450(ALBION RD)	C	I	2240	.	.	2050	.
11 BENTON	95805	00475	IR 475 (FOSS HILL) S/O IR 448 (ALBION)	C	I	220	.	.	220	.
11 BENTON	36902	00555	IR 555 (GOGAN RD) NE/O SR 139	C	I	850	.	.	820	.
11 BENTON	00301	00567	BENTON AVE N/O SR 11/100/139 (BRIDGE ST)	C	I	2440	.	.	2020	.
11 BENTON	00305	00567	BENTON AVE S/O SR 11/100/139 (BRIDGE ST)	C	I	4950	.	.	5210	.
11 BENTON	36505	00567	IR 567 (RIVER RD) S/O IR 1667	C	I	2080	.	.	1540	.
11 BENTON	53406	00567	IR 567 (BENTON) SW/O IR 3745 @WINSLOW TL	C	I	4540	.	.	4530	.
11 BENTON	36406	0100A	SR 100A SW/O IR 1344 (LIBBY ST)	C	I	2730	.	.	2240	.
11 BENTON	36802	0139X	SR 139 NE/O IR 467 (FALLS RD)	C	I	3240
11 BENTON	36807	0139X	SR 139 W/O IR 467 (FALLS RD) @ BR# 3667	C	I	7340	.	.	7540	.
11 BENTON	62803	0139X	SR 139 E/O IR 559 (HANSCOMB) @ BR# 5069	C	I	2150	.	.	2420	.
11 CHELSEA	92304	0009X	SR 9 SE/O IR 368 (INTERVAL RD)	A	ATR92304	9230	9180	10020	9210	8270
11 CHELSEA	31500	0009X	SR 9 (RIVER RD) @ RANDOLPH TL	C	ATR92304	9840	.	.	9050	.
11 CHELSEA	92803	0017X	SR 17 E/O IR 810 (COOPER) @WHITEFIELD TL	C	I	8210	.	8590	8290	.
11 CHELSEA	31602	0226X	SR 226(TOGUS RD) NE/O IR2300(WINDSOR RD)	C	I	3120	.	.	2870	.
11 CHELSEA	31606	0226X	SR 226(TOGUS RD) SW/O IR 2300(HANKERSON)	C	I	5120	.	.	4760	.
11 CHELSEA	31702	0226X	SR 226(TOGUS RD) NE/O IR2298(WELLMAN RD)	C	I	2070	.	.	1710	.
11 CHELSEA	33203	02298	IR 2298(HALLOWELL RD) E/O IR433(CONY RD)	C	I	1120	.	.	1190	.
11 CHELSEA	33207	02298	IR 2298(HALLOWELL RD) W/O IR433(CONY RD)	C	I	2370	.	.	2400	.
11 CHELSEA	34307	02298	IR 2298(HALLOWELL) W/O IR2300(TOWNHOUSE)	C	I	2690	.	.	2250	.
11 CHELSEA	92503	02298	IR 2298(HALLOWELL RD) E/O SR 9(RIVER RD)	C	I	2430	.	.	2360	.
11 CHELSEA	31607	02300	IR 2300 (HANKERSON RD) W/O SR 226(TOGUS)	C	I	630	.	.	680	.
11 CHELSEA	34305	02300	IR 2300(TOWNHOUSE) S/O IR2298(HALLOWELL)	C	I	870	.	.	1030	.
11 CHELSEA	98603	02300	IR 2300 (WINDSOR) E/O IR 1515 @ BR# 6115	C	I	2330	.	.	2230	.
11 CHELSEA	33201	03798	IR 433(CONY RD) N/O IR2298(HALLOWELL RD)	C	I	2050	.	.	1850	.
11 CHINA	33516	0003W	SR 3/9/US 202 (WB) SW/O SR 32	C	II	.	.	.	4660	.
11 CHINA	33612	0003W	SR 3 (WB) NE/O SR 9/US 202	C	ATR66007	.	.	.	2730	.
11 CHINA	66007	0003X	SR 3 W/O IR 527 (ALDER PARK RD)	A	ATR66007	5480	5480	5530	5590	5480
11 CHINA	33406	0003X	SR 3/9/US 202 SW/O IR 3805 (SMITH RD)	C	II	9530	.	.	8320	.

2007 Maine Transportation Count Book

County

Kennebec

TOWN	STATION	ROAD	LOCATION	TYPE	GROUP	AADT03	AADT04	AADT05	AADT06	AADT07
11 CHINA	33506	0003X	SR 3/9/32/US 202 (EB) SW/O SR 32	C	II	10500	.	.	4790	.
11 CHINA	33602	0003X	SR 3 (EB) NE/O SR 9/US 202	C	ATR66007	6790	.	.	2710	.
11 CHINA	66003	0003X	SR 3 E/O IR 527 (ALDER PK RD)	C	ATR66007	6210
11 CHINA	31805	0009X	SR 9/202 S/O IR444(PLEASANT VIEW RDG RD)	C	II	5300	.	.	4910	.
11 CHINA	33808	0009X	SR 9/US 202 NW/O IR 1308 (LEGION MEM DR)	C	II	3750	.	.	3360	.
11 CHINA	35401	0009X	SR 9/137/US 202 N/O SR 137	C	II	3000	.	.	2950	.
11 CHINA	35403	0009X	SR 9/US 202 E/O SR 137	C	II	5130	.	.	4830	.
11 CHINA	66302	0009X	SR 9/US 202 NE/O IR 527 (ALDER PK RD)	C	II	4550	.	.	4610	.
11 CHINA	33408	0032X	SR 32 NW/O IR 1306 (VILLAGE ST)	C	I	2190	.	.	1800	.
11 CHINA	33504	0032X	SR 32 SE/O SR 3/9/US 202	C	I	4470	.	.	3850	.
11 CHINA	96405	0032X	SR 32 S/O IR 428 (WEEKS MILLS RD)	C	I	3390	.	.	2870	.
11 CHINA	33307	00372	IR 372 (WEEKS MILLS) W/O IR 519 @BR#6238	C	I	.	.	.	1030	.
11 CHINA	32007	00388	IR 388(STANLEY HILL RD) W/O IR 483(NECK)	C	II	760	.	.	590	.
11 CHINA	96403	00428	IR 428 (WEEKS MILLS RD) E/O SR 32	C	I	1050	.	.	910	.
11 CHINA	31301	00434	IR 434 (HANSON RD) N/O SR 3	C	I	300	.	.	250	.
11 CHINA	31803	00444	IR 444(PLEASANT VIEW RDG RD) E/O SR9/202	C	I	1410	.	.	1340	.
11 CHINA	66001	00527	IR 527 (ALDER PARK RD) N/O SR 3	A		1420
11 CHINA	50702	01341	IR 1341 (BRANCH MILLS RD) NE/O SR 3	C	I	1670	.	.	1540	.
11 CHINA	31807	01357	IR 1357(CAUSEWAY) W/O SR 9/US202@BR#3065	C	II	1190	.	.	950	.
11 CHINA	35405	01357	IR 1357 (MAIN ST) S/O SR 137	C	II	1510	.	.	1200	.
11 CHINA	35407	0137X	SR 137 W/O IR 1357 (MAIN ST)	C	II	5110	.	.	4510	.
11 CHINA	33404	03805	IR 3805 (SMITH RD) SE/O SR 3/9/US 202	C	I	.	.	.	10	.
11 CLINTON	00203	0011X	SR 11/100 (MAIN ST) E/O RAILROAD ST	C	I	.	.	.	3880	.
11 CLINTON	00207	0011X	SR 11/100 (MAIN ST) W/O PLEASANT ST	C	I	.	.	.	5880	.
11 CLINTON	00506	0011X	SR 11/100 (MAIN) SW/O GREENLAWN CEMETERY	C	I	2980	.	.	2480	.
11 CLINTON	01902	0011X	SR 11/100(MAIN ST) NE/O MCNALLY RD @CUL	C	I	2490	.	.	2300	.
11 CLINTON	36303	0023X	SR 23 (CANAAN RD) E/O IR 567	C	II	2880	.	.	2650	.
11 CLINTON	36307	0023X	SR 23 W/O IR 567 @ FAIRFIELD TL @BR#3389	C	II	4330	.	.	3810	.
11 CLINTON	00407	00462	BAKER ST W/O SR 11/100 (MAIN ST)	C	I	4770	.	.	4080	.
11 CLINTON	02507	00462	HINKLEY RD W/O I-95 SB RAMPS	C	I	2360	.	.	2110	.
11 CLINTON	36204	00462	IR 462 (HINKLEY RD) SE/O IR 569	C	I	1330	.	.	1210	.
11 CLINTON	36208	00462	IR 462 (HINKLEY RD) NW/O IR 569	C	I	1190	.	.	1110	.
11 CLINTON	52308	00462	IR 462(HINKLEY) NW/O IR 575(GUSTAFSON)	C	I	.	.	.	880	.
11 CLINTON	00201	00555	RAILROAD ST N/O SR 11/100 (MAIN ST)	C	I	3320	.	.	2880	.

2007 Maine Transportation Count Book

Kennebec

	TOWN	STATION	ROAD	LOCATION	TYPE	GROUP	AADT03	AADT04	AADT05	AADT06	AADT07
11	CLINTON	00205	00555	PLEASANT ST S/O SR 11/100 (MAIN ST)	C	I	1350	.	.	1220	.
11	CLINTON	00805	00555	PLEASANT ST 0.3 MI S/O PEARL ST @ CUL	C	I	900	.	.	900	.
11	CLINTON	02108	00555	HILL RD 0.13 MI NW/O MUTTON LN @BR# 5459	C	I	1610	.	.	1330	.
11	CLINTON	02201	00557	MUTTON LN 0.11 MI N/O HILL RD @ CUL	C	I	990	.	.	900	.
11	CLINTON	36301	00567	IR 567(RIVER RD) N/O IR1345(PISHON FERRY	C	I	1400	.	.	1170	.
11	CLINTON	36305	00567	IR 567 (RIVER RD) S/O SR 23	C	I	1190	.	.	920	.
11	CLINTON	36202	00569	IR 569 (BATTLE RIDGE RD) NE/O IR 462	C	I	610	.	.	580	.
11	CLINTON	36206	00569	IR 569 (TARDIFF RD) SW/O IR 462	C	I	830	.	.	680	.
11	CLINTON	01008	00760	MORRISON AVE NW/O SR 11/100 (MAIN ST)	C	I	520	.	.	530	.
11	CLINTON	01303	00762	WINN AVE E/O RAILROAD AVE	C	I	280	.	.	250	.
11	CLINTON	01903	00779	MCNALLY RD E/O SR 11/100 (MAIN) @ CUL	C	I	290	.	.	240	.
11	CLINTON	52602	0095S	I-95 (SB) N/O ON RAMP FROM HINCKLEY RD	I	ATR53104	8910	.	8690	.	8760
11	CLINTON	52604	0095S	I-95 (SB) N/O OFF RAMP TO HINCKLEY RD	I	ATR53104	9360	.	9050	.	9680
11	CLINTON	52601	0095X	I-95 (NB) N/O OFF RAMP TO HINCKLEY RD	I	ATR53103	8010	.	8450	.	8600
11	CLINTON	52603	0095X	I-95 (NB) N/O ON RAMP FROM HINCKLEY RD	I	ATR53103	8510	.	8830	.	9130
11	FARMINGDALE	00101	0027X	SR 27/US 201(MAINE AVE) N/O NORTHERN AVE	C	I	16830	.	.	14760	.
11	FARMINGDALE	00105	0027X	SR 27/US 201(MAINE AVE) S/O NORTHERN AVE	C	I	17580	.	.	15840	.
11	FARMINGDALE	01005	0027X	SR 27/US 201 (MAINE AVE) S/O BOWMAN ST	C	I	16860
11	FARMINGDALE	01101	0027X	SR 27/US 201 (MAINE AVE) N/O PARK ST	C	I	16470	.	.	14380	.
11	FARMINGDALE	01105	0027X	SR 27/US 201 (MAINE AVE) S/O PARK ST	C	I	16770
11	FARMINGDALE	01708	0027X	SR 27/US 201(MAINE AVE) NW/O LONSDALE RD	C	I	16750	.	.	14290	.
11	FARMINGDALE	01905	0027X	SR 27/US 201(MAINE AVE) S/O KENNEBEC DR	C	I	.	.	16820	15210	.
11	FARMINGDALE	39200	00340	IR 340 (OUTLET) @BR# 0005 @MANCHESTER TL	C	I	310	.	.	440	.
11	FARMINGDALE	01107	10021	PARK ST W/O SR 27/US 201 (MAINE AVE)	C	I	510
11	FARMINGDALE	00703	20004	BOWMAN ST E/O BLAINE RD	C	I	850	.	.	980	.
11	FARMINGDALE	01007	20004	BOWMAN ST W/O SR 27/US 201 (MAINE AVE)	C	I	.	.	.	590	.
11	FARMINGDALE	01506	20013	ALMAR ST SW/O SR 27/US 201 (MAINE AVE)	C	I	780	.	.	780	.
11	FARMINGDALE	01807	20016	MAPLE ST W/O HALLDALE HIGH ENT @ CUL	C	I	.	.	.	1170	.
11	FARMINGDALE	00107	20018	NORTHERN AVE W/O SR 27/US 201(MAINE AVE)	C	I	2400	.	.	2570	.
11	FARMINGDALE	00507	20018	NORTHERN AVE W/O ADAMS ST	C	I	2000	.	.	2190	.
11	FARMINGDALE	00607	20018	NORTHERN AVE W/O PEACOCK RD	C	I	1610	.	.	1650	.
11	FARMINGDALE	00601	20044	PEACOCK RD N/O NORTHERN AVE	C	I	910	.	.	940	.
11	FAYETTE	40303	0017X	SR 17(MAIN ST) E/O IR2045(CAMPGROUND RD)	C	I	1470	.	.	1530	.
11	FAYETTE	40307	0017X	SR 17(MAIN ST) W/O IR2045(CAMPGROUND)@TL	C	I	1480	.	.	1380	.

2007 Maine Transportation Count Book

Kennebec

TOWN	STATION	ROAD	LOCATION	TYPE	GROUP	AADT03	AADT04	AADT05	AADT06	AADT07
11 FAYETTE	40605	0017X	SR 17(MAIN ST) S/O IR 2079(ECHO LAKE RD)	C	I	1710	.	.	1800	.
11 FAYETTE	40703	0017X	SR 17 E/O IR 2073(LOVEJOY PD RD)@BR#3053	C	I	2060	.	.	1950	.
11 FAYETTE	51704	0017X	SR 17(MAIN ST) SE/O IR538(JACKMANS MILL)	C	I	1240	.	.	1480	.
11 FAYETTE	40305	02045	IR 2045(CAMPGROUND RD) S/O IR1584(FULSOM	C	I	610	.	.	500	.
11 FAYETTE	32101	02059	IR 2059 (WATSON HEIGHTS) N/O SR 17	C	I	160
11 FAYETTE	40705	02073	IR 2073(LOVEJOY PD RD) S/O SR17(MAIN ST)	C	I	380	.	.	410	.
11 FAYETTE	40603	02079	IR 2079(ECHO LAKE RD) E/O SR 17(MAIN ST)	C	III	250
11 GARDINER	00403	00038	MECHANIC ST E/O US 201 (BRUNSWICK AVE)	C	I	1080	.	.	970	.
11 GARDINER	00100	0009X	SR 9/27/126 (EB) @ BR#2304 @ RANDOLPH TL	C	I	.	.	.	9880	.
11 GARDINER	00110	0009X	SR 9/27/126 (WB) @ BR#2304 @ RANDOLPH TL	C	I	.	.	.	9880	.
11 GARDINER	00207	0009X	SR 9/126(WATER ST) W/O US 201(BRUNSWICK)	C	I	.	.	.	8420	.
11 GARDINER	03003	0009X	SR 9/126 (COBBOSSEE AV) E/O WEST HILL RD	C	I	8040	.	.	8040	.
11 GARDINER	05002	0009X	SR 9/126 (WATER ST) NE/O CENTRAL ST	C	I	6260	.	.	6240	.
11 GARDINER	05006	0009X	SR 9/126 (CENTRAL ST) SW/O GREEN ST	C	I	.	.	.	7260	.
11 GARDINER	00605	0024X	SR 24(MAINE AVE) S/O RAMP FROM BRIDGE ST	C	I	10030	.	.	8760	.
11 GARDINER	00802	0024X	SR 24 (MAINE AVE) NE/O WATER ST	C	I	.	.	.	7120	.
11 GARDINER	00804	0024X	SR 24 (WATER ST) SE/O CHURCH ST	C	I	.	.	.	3340	.
11 GARDINER	01408	0024X	SR 24 (RIVER AVE) NW/O COTTAGE ST	C	I	2550	.	.	2310	.
11 GARDINER	02401	0024X	SR 24 (RIVER RD) N/O CAPEN RD	C	I	2460	.	.	2260	.
11 GARDINER	02502	0024X	SR 24 (RIVER RD) NE/O COSTELLO RD	C	I	1240	.	.	1160	.
11 GARDINER	02204	00627	MARSTON RD SE/O US 201 (BRUNSWICK AVE)	C	I	1230	.	.	1420	.
11 GARDINER	53502	0095S	I-295 (SB) S/O ON RAMP FROM US 201	I	II	.	11060	.	11080	.
11 GARDINER	53504	0095S	I-295 (SB) S/O OFF RAMP TO US 201	I	II	.	8740	.	9330	.
11 GARDINER	53501	0095X	I-295 (NB) S/O OFF RAMP TO US 201	I	II	.	11010	.	10930	.
11 GARDINER	53503	0095X	I-295 (NB) N/O OFF RAMP TO US 201	I	II	.	8940	.	9030	.
11 GARDINER	01501	0201X	US 201 (BRUNSWICK AVE) N/O CHURCH ST	C	I	.	.	.	8240	.
11 GARDINER	02002	0201X	US 201 (BRUNSWICK AVE) NE/O PLUMMER ST	C	I	10410
11 GARDINER	02006	0201X	US 201 (BRUNSWICK AVE) SW/O CENTRAL ST	C	I	.	.	.	9350	.
11 GARDINER	02102	0201X	US 201 (BRUNSWICK AVE) NE/O PIERCE ST	C	I	.	.	.	8670	.
11 GARDINER	02106	0201X	US 201 (BRUNSWICK AVE) SW/O MATTSON HTS	S	I	.	.	9080	.	.
11 GARDINER	02206	0201X	US 201 (BRUNSWICK AVE) SW/O MARSTON RD	C	I	8330	.	.	8400	.
11 GARDINER	02806	0201X	US 201 SW/O OLD BRUNSWICK RD S (S JCT)	C	I	8250	.	.	7790	.
11 GARDINER	03102	0201X	US 201(BRUNSWICK AVE) NE/O I-295 NB RMPS	C	I	.	.	.	7370	.
11 GARDINER	03306	0201X	US 201 (BRUNSWICK) SW/O I-295 (SB) RAMPS	C	I	2650	.	2400	2520	.

2007 Maine Transportation Count Book

County

Kennebec

TOWN	STATION	ROAD	LOCATION	TYPE	GROUP	AADT03	AADT04	AADT05	AADT06	AADT07
11 GARDINER	04301	0201X	US 201 (BRIDGE ST) N/O HIGHLAND AVE	C	I	18090	.	.	17340	.
11 GARDINER	02904	02272	LIBBY HILL RD SE/O US 201	C	I	.	.	.	1090	.
11 GARDINER	05202	30008	CENTRAL ST NE/O OAK ST	C	I	1060	.	.	1080	.
11 GARDINER	01304	30009	CHERRY ST SE/O SR 9/126 (CENTRAL ST)	C	I	.	.	.	750	.
11 GARDINER	00806	30011	CHURCH ST SW/O WATER ST	C	I	.	.	.	4620	.
11 GARDINER	01502	30011	CHURCH ST NE/O DRESDEN AVE	C	I	.	.	.	3590	.
11 GARDINER	01602	30011	CHURCH ST NE/O PLEASANT ST	C	I	.	.	.	3710	.
11 GARDINER	01406	30014	COTTAGE ST SW/O SR 24 (RIVER RD)	C	I	.	.	.	140	.
11 GARDINER	01504	30018	DRESDEN AVE SE/O CHURCH ST	C	I	.	.	.	1020	.
11 GARDINER	02702	30028	HARRISON AVE NE/O ANDREWS ST	C	I	460	.	.	650	.
11 GARDINER	00902	30030	HIGH HOLBURN ST NE/O WEST ST	C	I	.	.	.	130	.
11 GARDINER	01006	30030	HIGH HOLBURN ST SW/O US 201 (BRUNSWICK)	C	I	.	.	.	390	.
11 GARDINER	03207	30031	HIGHLAND AVE W/O WEST HILL RD	C	I	3530	.	.	3520	.
11 GARDINER	03507	30031	HIGHLAND AVE W/O HARRISON AVE	C	I	4730	.	.	4680	.
11 GARDINER	03803	30031	HIGHLAND AVE E/O MT VERNON AVE	C	I	4670	.	.	4560	.
11 GARDINER	01206	30034	KINGSBURY ST SW/O SR 24 (WATER ST)	C	I	.	.	.	80	.
11 GARDINER	01708	30036	LINCOLN ST NW/O SCHOOL ST	C	I	.	.	.	1040	.
11 GARDINER	01604	30047	PLEASANT ST SE/O CHURCH ST	C	I	.	.	.	240	.
11 GARDINER	01706	30054	SCHOOL ST SW/O LINCOLN ST	C	I	.	.	.	580	.
11 GARDINER	00707	30055	SPRING ST W/O SR 9/126/US 201 (BRIDGE)	C	I	1180	.	.	970	.
11 GARDINER	01106	30065	VINE ST SW/O SR 24 (WATER ST)	C	I	.	.	.	310	.
11 GARDINER	05102	30067	WASHINGTON AVE NE/O SPRUCE ST	C	I	230	.	.	310	.
11 GARDINER	03001	30068	WEST HILL RD N/O SR 9/126(COBBOSSEE AVE)	C	I	.	.	.	3050	.
11 GARDINER	03205	30068	WEST HILL RD S/O HIGHLAND AVE	C	I	2660	.	.	3150	.
11 GARDINER	02208	30069	MARSTON RD NW/O US 201 (BRUNSWICK AVE)	C	I	.	.	.	1450	.
11 GARDINER	04508	30071	WINTER ST NW/O SR 9/126 (WATER ST)@ BR	C	I	1800	.	.	1460	.
11 GARDINER	00203	30083	WATER ST E/O SR 9/126/US 201 (BRIDGE ST)	C	I	.	.	.	2440	.
11 GARDINER	01306	30089	CENTRAL ST SW/O SR 9/126 (COBBOSSEE AVE)	C	I	.	.	.	1790	.
11 HALLOWELL	00201	0027X	SR 27/US 201 (WATER ST) N/O NORTH ST	C	I	13480	.	.	11590	.
11 HALLOWELL	00701	0027X	SR 27/US 201 (WATER ST) N/O WINTHROP ST	C	I	13510	.	.	11770	.
11 HALLOWELL	00705	0027X	SR 27/US 201 (WATER ST) S/O WINTHROP ST	C	I	.	.	.	15390	.
11 HALLOWELL	01208	0027X	SR 27/US 201 (WATER ST) NW/O MAPLE ST	C	I	16550	.	.	13610	.
11 HALLOWELL	30701	00336	IR 336 (SMITH RD) N/O IR 324 @ BR# 0557	C	I	.	.	.	950	.
11 HALLOWELL	30805	00336	IR 336(VAUGHAN RD) S/O IR 336(OUTLET RD)	C	I	.	.	.	930	.

2007 Maine Transportation Count Book

Kennebec

	TOWN	STATION	ROAD	LOCATION	TYPE	GROUP	AADT03	AADT04	AADT05	AADT06	AADT07
11	HALLOWELL	30807	00336	IR 336(OUTLET RD) W/O IR2257(VAUGHAN RD)	C	I	890	.	.	820	.
11	HALLOWELL	00103	00342	WINTHROP ST E/O WHITTEN RD @ BR# 0555	C	I	6450	.	.	5970	.
11	HALLOWELL	00108	00342	WINTHROP ST NW/O WHITTEN RD	C	I	4720	.	.	4650	.
11	HALLOWELL	30705	02255	IR 2255 (SMITH RD) S/O IR 324(HALLOWELL)	C	I	.	.	.	810	.
11	HALLOWELL	30801	02257	IR 2257(VAUGHAN RD) N/O IR336(OUTLET RD)	C	I	.	.	.	1370	.
11	HALLOWELL	31005	02259	IR 2259 (TOWN FARM) S/O IR 342(WINTHROP)	C	I	1570	.	.	1730	.
11	HALLOWELL	00101	02265	WHITTEN RD N/O WINTHROP ST	C	I	.	.	.	4740	.
11	HALLOWELL	00304	40001	ACADEMY ST SE/O MIDDLE ST	C	I	.	.	.	340	.
11	HALLOWELL	00308	40001	ACADEMY ST NW/O MIDDLE ST	C	I	.	.	.	440	.
11	HALLOWELL	01507	40004	CENTRAL ST W/O SR 27/US 201 (WATER ST)	C	I	.	.	.	1260	.
11	HALLOWELL	01603	40004	CENTRAL ST E/O ORCHARD LN	C	I	800
11	HALLOWELL	01907	40011	GREENVILLE ST W/O SR 27/US 201(WATER ST)	C	I	860	.	.	910	.
11	HALLOWELL	01303	40017	LITCHFIELD RD E/O MIDDLE ST	T	I	.	.	.	500	.
11	HALLOWELL	01307	40017	LITCHFIELD RD W/O MIDDLE ST	T	I	.	.	.	1750	.
11	HALLOWELL	01207	40018	MAPLE ST W/O SR 27/US 201 (WATER ST)	C	I	1950	.	.	1740	.
11	HALLOWELL	00306	40020	MIDDLE ST SW/O ACADEMY ST	C	I	.	.	.	1770	.
11	HALLOWELL	01005	40020	MIDDLE ST S/O GROVE ST	C	I	1460	.	.	1520	.
11	HALLOWELL	01301	40020	MIDDLE ST N/O LITCHFIELD RD	T	I	.	.	.	1440	.
11	HALLOWELL	01706	40020	MIDDLE ST SW/O WINTHROP ST	C	I	2180	.	.	1860	.
11	HALLOWELL	00207	40021	NORTH ST W/O SR 27/US 201 (WATER ST)	C	I	1420	.	.	1160	.
11	HALLOWELL	00405	40027	SECOND ST S/O LINCOLN ST @ BR# 0565	C	I	4350	.	.	3930	.
11	HALLOWELL	00601	40027	SECOND ST N/O TEMPLE ST	C	I	.	.	.	1060	.
11	HALLOWELL	00801	40027	SECOND ST N/O GROVE ST	C	I	.	.	.	690	.
11	HALLOWELL	01801	40027	SECOND ST N/O CENTRAL ST	C	I	2250	.	.	1580	.
11	HALLOWELL	01805	40027	SECOND ST S/O CENTRAL ST	C	I	2110	.	.	1780	.
11	HALLOWELL	00604	40032	TEMPLE ST SE/O SECOND ST	C	I	.	.	.	1040	.
11	HALLOWELL	00507	40045	WINTHROP ST W/O SECOND ST	C	I	8050	.	.	7460	.
11	HALLOWELL	00707	40045	WINTHROP ST W/O SR 27/US 201 (WATER ST)	C	I	.	.	.	7400	.
11	LITCHFIELD	43902	0009X	SR 9/126 NE/O IR 353 (HALLOWELL RD)	T	II	.	3030	.	.	.
11	LITCHFIELD	43907	0009X	SR 9/126 W/O HALLOWELL RD	C	I	2950	2950	.	2870	.
11	LITCHFIELD	94502	0009X	SR 9/126 NE/O IR 2518(PW) @W GARDINER TL	C	I	2470	.	.	2440	.
11	LITCHFIELD	44206	00304	IR 304 (POND RD) SW/O IR 498 (THOROFARE)	C	I	.	.	.	1050	.
11	LITCHFIELD	94401	00304	IR 304 (POND RD) N/O IR 314	C	I	710	.	.	590	.
11	LITCHFIELD	94603	00316	IR 316 (DENNIS HILL) E/O IR 2237 @ TL	C	I	430	.	.	400	.

2007 Maine Transportation Count Book

Kennebec

TOWN	STATION	ROAD	LOCATION	TYPE	GROUP	AADT03	AADT04	AADT05	AADT06	AADT07
11 LITCHFIELD	51202	00322	IR 322 (HALLOWELL RD) NE/O IR 353 (NECK)	C	I	1910	.	.	1520	.
11 LITCHFIELD	43901	00353	IR 353 (HALLOWELL RD) N/O SR 9/126	C	I	1620	1480	.	1490	.
11 LITCHFIELD	43905	00353	IR 353 (HALLOWELL RD) S/O SR 9/126	C	I	1210	1130	.	1100	.
11 LITCHFIELD	51201	00353	IR 353 (NECK RD) N/O IR 322 (HALLOWELL)	C	I	970	.	.	970	.
11 LITCHFIELD	64905	00363	IR 363 (HUNTINGTON HILL RD) S/O SR 197	C	I	1410	.	.	1270	.
11 LITCHFIELD	43806	00365	IR 365 (WHIPPOORWILL RD) SW/O IR 2064	C	II	1220	.	.	810	.
11 LITCHFIELD	44203	00498	IR 498 (THOROFARE RD)E/O IR 304(POND RD)	C	I	680	.	.	820	.
11 LITCHFIELD	43200	0197X	SR 197 @ WALES TL	C	I	2420
11 LITCHFIELD	44005	0197X	SR 197 S/O IR 2237 (UPR POND RD)	C	I	1590	.	.	1180	.
11 LITCHFIELD	44008	0197X	SR 197 NW/O IR 2237 (UPR POND RD)	C	I	1440	.	.	1000	.
11 LITCHFIELD	44107	0197X	SR 197 W/O IR 353 (HALLOWELL RD)	C	I	2160	.	.	1930	.
11 LITCHFIELD	43807	02064	IR 2064 (HARDSCRABBLE RD) W/O IR 365	C	II	1610	.	.	1310	.
11 MANCHESTER	41507	0011X	SR 11/100/202 (WESTERN) W/O IR 353(POND)	C	ATR41907	17970	.	.	16510	.
11 MANCHESTER	45007	0011X	SR 11/100/202 W/O IR 925 @ WINTHROP TL	C	ATR41907	.	.	.	14850	.
11 MANCHESTER	41508	0017X	SR 17(READFIELD RD) NW/O SR 11/100/US202	C	I	6870
11 MANCHESTER	95204	0017X	SR 17(READFIELD RD) SE/O IR339(WORTHING)	C	I	.	.	.	5590	.
11 MANCHESTER	98207	0017X	SR 11/US 202 W/O IR 2277 (PELTON HILL)	C	I	21640	.	.	20170	.
11 MANCHESTER	95004	00335	IR 335(PRESCOTT) SE/O IR 337(PUDDLEDOCK)	C	I	1290	.	.	1080	.
11 MANCHESTER	50303	00336	IR 336 (MEADOW HILL RD) E/O IR 353(POND)	C	I	330	.	.	420	.
11 MANCHESTER	34002	00337	IR 337 (PUDDLEDOCK RD) NE/O SR 11/17/202	C	I	2510	.	.	1420	.
11 MANCHESTER	39504	00337	IR 337(PRESCOTT RD) SE/O SR135(BELGRADE)	C	I	940	.	.	830	.
11 MANCHESTER	95202	00339	IR 339(WORTHING RD) NE/O SR17(READFIELD)	C	I	240	.	.	290	.
11 MANCHESTER	43703	00340	IR 340 (COLLINS RD) E/O IR 353 (POND RD)	C	I	450
11 MANCHESTER	34004	00342	IR 342(GRANITE HILL RD) SE/O SR11/17/202	C	I	3940	.	.	4090	.
11 MANCHESTER	41506	00353	IR 353 (POND RD) SW/O SR 11/100/202	C	I	3600	.	.	3500	.
11 MANCHESTER	43701	00353	IR 353 (POND RD) N/O IR 340 (COLLINS RD)	C	I	2400	.	.	2490	.
11 MANCHESTER	39506	0135X	SR 135(BELGRADE RD) SW/O IR337(PRESCOTT)	C	II	.	.	.	830	.
11 MANCHESTER	95107	02082	IR 2082 (SCRIBNER HILL RD) W/O IR 337	C	I	410	.	.	440	.
11 MANCHESTER	45102	02269	IR 2269(SUMMERHAVEN) NE/O IR337(PRESCOTT)	C	I	.	.	.	500	.
11 MONMOUTH	43302	0009X	SR 9/126 NE/O IR 3714(NORTH OAK HILL RD)	C	II	3580
11 MONMOUTH	43306	0009X	SR 9/126 SW/O IR 3714 @ WALES TL	C	I	4430	.	.	3920	.
11 MONMOUTH	53902	0009X	SR 9/126 NE/O IR1379(OAK HILL ACRES)NJCT	C	I	.	.	.	2960	.
11 MONMOUTH	94104	0009X	SR 9/126 SE/O IR 365 (TOWN FARM RD)	C	I	2850	.	.	2330	.
11 MONMOUTH	34902	0011X	SR 11/100/US 202 NE/O IR 2093 @ TL	C	ATR41907	7960	.	.	8270	.

2007 Maine Transportation Count Book

Kennebec

TOWN	STATION	ROAD	LOCATION	TYPE	GROUP	AADT03	AADT04	AADT05	AADT06	AADT07
11 MONMOUTH	42703	0011X	SR 11/100/US 202 E/O SR 132	C	ATR41907	8760	.	.	8670	.
11 MONMOUTH	42707	0011X	SR 11/100/US 202 W/O SR 132	C	ATR41907	6560	.	.	6470	.
11 MONMOUTH	43505	00303	IR 303 (SANBORN RD) S/O SR 135	C	II	1080	.	.	1120	.
11 MONMOUTH	98805	00305	IR 305(WAUGAN RD) S/O IR 1076 @ BR# 0487	C	II	1080	.	.	1060	.
11 MONMOUTH	43608	00343	IR 343 (MACOMBER RD) NW/O SR 135	C	III	450	.	.	450	.
11 MONMOUTH	43405	00345	IR 345 (S MONMOUTH RD) S/O IR 2064	C	II	1090	.	.	1110	.
11 MONMOUTH	39105	00347	IR 347 (RIDGE RD) S/O IR 2309 (GILMAN)	C	I	360	.	.	340	.
11 MONMOUTH	44308	00655	IR 655 (ACADEMY RD) NW/O SR 132	C	I	1260	.	.	730	.
11 MONMOUTH	42705	0132X	SR 132 S/O SR 11/100/US 202	C	I	3280	.	.	3140	.
11 MONMOUTH	42905	0132X	SR 132 S/O IR 502 (WELCH AVE)	C	I	2240	.	.	2290	.
11 MONMOUTH	43100	0132X	SR 132 @ WALES TL	C	I	1400
11 MONMOUTH	93501	0132X	SR 132 N/O IR 2052 (BLUE ST)	C	I	.	.	.	3370	.
11 MONMOUTH	42803	0135X	SR 135 (PLEASANT ST) E/O SR 132(MAIN ST)	C	II	760	.	.	700	.
11 MONMOUTH	43503	0135X	SR 135 E/O IR 303 (SANBORN RD) @ BR#5275	C	II+III	.	.	.	1090	.
11 MONMOUTH	43507	0135X	SR 135 W/O IR 303 (SANBORN RD)	C	II	1050	.	.	1200	.
11 MONMOUTH	43602	0135X	SR 135 NE/O IR 343 (MACOMBER RD)	C	III	560	.	.	610	.
11 MONMOUTH	50108	02050	IR 2050(WILSON PD RD) NW/O IR2549(BACK)	C	I	520	.	.	690	.
11 MONMOUTH	35104	02052	IR 2052 (BLUE RD) SE/O SR 11/100/US 202	C	I	1110
11 MONMOUTH	93507	02052	IR 2052 (BLUE ST) W/O SR 132	C	I	1860
11 MONMOUTH	44303	02062	IR 2062 (BERRY RD) E/O SR 132	C	II	500	.	.	390	.
11 MONMOUTH	37904	02064	IR 2064(MAPLE ST) SE/O IR 500(GRAY MILL)	C	I	.	.	.	1200	.
11 MONMOUTH	38704	02064	IR 2064(COBBOSSEE) SE/O IR 2559 @BR#0520	C	I	1330	.	.	1060	.
11 MONMOUTH	39207	02064	IR 2064 (COBBOSSEE RD) W/O IR 2227	C	I	1340	.	.	1220	.
11 MONMOUTH	43403	02064	IR 2064 (COBBOSSEE RD) E/O IR 303	C	II	1340	.	.	1240	.
11 MONMOUTH	43407	02064	IR 2064 (COBBOSSEE RD) W/O IR 345	C	II	820	.	.	750	.
11 MONMOUTH	34608	02093	IR 2093 (N MAIN RD) NW/O IR 2551	C	I	1160	.	.	1140	.
11 MONMOUTH	34904	02093	IR 2093(ANABESACOOK) SE/O SR11/100/US202	C	II	650	.	.	600	.
11 MONMOUTH	35201	02095	IR 2095(PISGAH) N/O IR2549(WILSON PD)@TL	C	I	740	.	.	730	.
11 MONMOUTH	42701	02097	IR 2097 (BLAISDELL RD) N/O SR 11/100/202	C	I	900	.	.	930	.
11 MONMOUTH	39201	02227	IR 2227 (PRESCOTT HILL RD) N/O IR 2064	C	II	120	.	.	160	.
11 MONMOUTH	39003	02309	IR 2309 (RIDGE RD) E/O SR 132	C	I	510	.	.	410	.
11 MONMOUTH	43002	02548	IR 2548 (NORRIS HILL) NE/O SR 11/100/202	C	I	1180	.	.	1030	.
11 MONMOUTH	44506	02548	IR 2548 (ACADEMY RD) SW/O SR 132	C	I	550	.	.	360	.
11 MONMOUTH	44602	02548	IR 2548 (NORRIS HILL) NE/O IR 2052(BLUE)	C	I	500	.	.	440	.

County **2007 Maine Transportation Count Book**

Kennebec

TOWN	STATION	ROAD	LOCATION	TYPE	GROUP	AADT03	AADT04	AADT05	AADT06	AADT07	
11	MONMOUTH	34602	02551	IR 2551 (OLD LEWISTON) NE/O IR 2093	C	I	350	.	.	360	.
11	MONMOUTH	42903	02559	IR 2559 (WELCH AVE) E/O SR 132	C	I	200	.	.	180	.
11	MONMOUTH	43304	03714	IR 3714 (SOUTH MONMOUTH) SE/O SR 9/126	C	I	1560	.	.	1490	.
11	MONMOUTH	43308	03714	IR 3714 (SOUTH MONMOUTH) NW/O SR 9/126	C	II	2020	.	.	1980	.
11	MT VERNON	39705	0041X	SR 41 S/O IR 2021(SEAVEY CNR RD)@BR#2837	C	I	.	.	.	1100	.
11	MT VERNON	39801	0041X	SR 41 (POND RD) N/O IR 2055 (MAIN ST)	C	I	1610	.	.	1680	.
11	MT VERNON	40501	0041X	SR 41 N/O IR 2075 (SANDY RIVER RD)	C	I	.	.	.	890	.
11	MT VERNON	40503	0041X	SR 41 E/O IR 2075(SANDY RIVER) @BR# 2930	C	I	1250	.	.	1110	.
11	MT VERNON	40505	0041X	SR 41 S/O IR 2077 (DESERT POND RD)	C	I	1270	.	.	1130	.
11	MT VERNON	39707	02021	IR 2021(SEAVEY CNR RD) W/O SR 41 @BR#5688	C	I	720	.	.	670	.
11	MT VERNON	51802	02041	IR 2041 (WATSON PD RD) NE/O IR 2667 @ TL	C	I	.	.	.	570	.
11	MT VERNON	39606	02055	IR 2055 (CHURCH) SW/O IR 315 (NORTH RD)	C	I	430	.	.	470	.
11	MT VERNON	39608	02055	IR 315 (NORTH RD) NW/O IR 2055 (CHURCH)	C	I	1150	.	.	1100	.
11	MT VERNON	39803	02055	IR 2055 (NORTH RD) E/O IR 2667(BELGRADE)	C	I	1150	.	.	1000	.
11	MT VERNON	53605	02055	IR 2055 (NORTH RD) S/O IR 2537(BLAKE RD)	C	I	.	.	.	1050	.
11	MT VERNON	40507	02075	IR 2075 (SANDY RIVER RD) W/O IR 2079	C	I	360	.	.	350	.
11	MT VERNON	37204	02537	IR 2537 (BLAKE HILL RD) SE/O SR41@BR2380	C	I+II	120	.	.	120	.
11	MT VERNON	39802	02667	IR 2667(BELGRADE RD) NE/O IR 2055(NORTH)	C	I	1460	.	.	1440	.
11	MT VERNON	51803	02667	IR 2667 (CASTLE ISLAND RD) E/O IR 2041	C	II	1440	.	.	1350	.
11	MT VERNON	51806	02667	IR 2667 (BELGRADE RD) SW/O IR 2041	C	I	1240	.	.	1190	.
11	OAKLAND	01006	0011X	SR 11 (BELGRADE) SW/O LAKE VIEW DR	C	I	3940	.	.	4680	.
11	OAKLAND	02006	0011X	SR 11 (CHURCH ST) SW/O SR 137 (OAK ST)	C	I	5910	.	.	6910	.
11	OAKLAND	02103	0011X	SR 11/137 (WTVL RD) E/O COUNTRY CLUB RD	C	I	15630	.	.	15300	.
11	OAKLAND	02907	0011X	SR 11/137 (MAIN ST) W/O SR 23 (WATER ST)	C	I	.	.	.	5970	.
11	OAKLAND	03304	0011X	SR 11/137 (WTVL RD) SE/O CASCADE MILL RD	C	I	.	.	.	12170	.
11	OAKLAND	37302	0011X	SR 11 NE/O IR 1202 (BLAKE LN)	C	II	.	.	.	3800	.
11	OAKLAND	37306	0011X	SR 11 SW/O IR 369 (TOWN FARM RD)	C	II	3320	.	.	3530	.
11	OAKLAND	45303	0011X	SR 11/137(WATERVILLE) E/O IR1935(FOREST)	C	I	.	.	.	16830	.
11	OAKLAND	00205	0023X	SR 23 (SUMMER) 0.1 MI S/O ALPINE @ CUL	C	I	4880	.	.	4640	.
11	OAKLAND	02902	0023X	SR 23 (FAIRFIELD) NE/O SR 11/137 (WTVL)	C	I	3790	.	.	3760	.
11	OAKLAND	02906	0023X	SR 23 (WATER) SW/O SR 11/137 (WTVL RD)	C	I	3520	.	.	3230	.
11	OAKLAND	03202	0023X	SR 23 0.2 MI NE/O BROOMHANDLE RD @ CUL	C	I	3380	.	.	2960	.
11	OAKLAND	38106	0023X	SR 23 (POND RD) SW/O IR 2260 (WEBB RD)	C	II	1640	.	.	1470	.
11	OAKLAND	38508	00375	IR 375 (E POND RD) NW/O SR 137	C	II	1060	.	.	1110	.

County **2007 Maine Transportation Count Book**

Kennebec

TOWN	STATION	ROAD	LOCATION	TYPE	GROUP	AADT03	AADT04	AADT05	AADT06	AADT07
11 OAKLAND	02301	00379	OAK ST N/O PLEASANT ST	C	I	5400	.	.	4930	.
11 OAKLAND	72803	00734	IR 734(RICES RIPS) E/O SR 23 @# 3484/85	C	I	1900	.	.	1730	.
11 OAKLAND	00202	01336	ALPINE ST NE/O SR 23 (SUMMER ST)	C	I	1340	.	.	1130	.
11 OAKLAND	02307	0137X	SR 137 (HIGH) W/O OAK ST	C	I	6840	.	.	5960	.
11 OAKLAND	02400	0137X	SR 137 (HIGH) @ CUL (@ POLE# 32/36)	C	II	6020	.	.	4970	.
11 OAKLAND	38504	0137X	SR 137 (SMITHFIELD JCT) SE/O IR 375	C	II	4470	.	.	3610	.
11 OAKLAND	38103	02260	IR 2260 (WEBB RD) E/O IR 2281(MIDDLE RD)	C	I	2850	.	.	2590	.
11 OAKLAND	38604	02266	IR 2266 (COUNTY RD) SE/O SR 23	C	I	1860	.	.	1850	.
11 OAKLAND	38005	02281	IR 2281(MIDDLE RD) S/O IR 2252 (TRAFTON)	C	I	2390	.	.	2270	.
11 OAKLAND	38105	02281	IR 2281(MIDDLE RD) S/O IR 2260 (WEBB RD)	C	I	.	.	.	2400	.
11 OAKLAND	02908	03165	DUNN ST NW/O SR 11/137 (MAIN ST)	C	I	7860	.	.	7300	.
11 PITTSTON	30401	0027X	SR 27 (WISCASSET RD) N/O IR 2278(KELLEY)	C	II	5780	.	.	5250	.
11 PITTSTON	30405	0027X	SR 27 (WISCASSET RD) S/O IR 2278(KELLEY)	C	II	5570	.	.	4900	.
11 PITTSTON	30608	0027X	SR 27/126 (WATER ST) NW/O SR 126@BR#2862	C	I	11860	.	.	10710	.
11 PITTSTON	32605	0027X	SR 27(WISCASSET RD) S/O IR2276(TROOP RD)	C	II	6340	.	.	5470	.
11 PITTSTON	51506	00409	IR 409(BLINN HILL) SW/O IR 2282 @BR#0532	C	I	.	.	.	270	.
11 PITTSTON	91604	00417	IR 417 (N BEECH HILL RD) SE/O SR 126	C	I	110
11 PITTSTON	30203	00421	IR 421(HUNTS MEADOW) E/O SR 194 @BR#0499	C	I	.	.	.	410	.
11 PITTSTON	44701	00427	IR 427 (PINKHAM RD) N/O SR 126 @ BR#0501	C	I	.	.	.	290	.
11 PITTSTON	30300	0126X	SR 126 (WHITEFIELD RD) @ WHITEFIELD TL	C	I	1340	.	1260	1280	.
11 PITTSTON	30603	0126X	SR 126(WHITEFIELD RD) E/O IR3003(SCHOOL)	C	I	2670	.	.	2730	.
11 PITTSTON	44702	0126X	SR 126 (WHITEFIELD) NE/O IR 427(PINKHAM)	C	I	1940	.	.	2150	.
11 PITTSTON	91607	0126X	SR 126(WHITEFIELD RD) W/O IR 429(NELSON)	C	I	1660	.	.	1700	.
11 PITTSTON	30003	0194X	SR 194 E/O IR 409(NASH RD)@WHITEFIELD TL	C	I	700	.	600	650	.
11 PITTSTON	30207	0194X	SR 194 W/O IR 417 (S BEECH HILL RD)	C	I	.	.	.	1550	.
11 PITTSTON	30504	0194X	SR 194 (E PITTSTON) SE/O IR 3003(SCHOOL)	C	I	2700	.	.	2710	.
11 PITTSTON	32603	02276	IR 2276(TROOP RD) E/O SR27(WISCASSET RD)	C	I	.	.	.	120	.
11 PITTSTON	30403	02278	IR 2278 (KELLEY RD) E/O SR 27(WISCASSET)	C	I	750	.	.	820	.
11 PITTSTON	51103	02278	IR 2278(KELLEY) E/O IR 413(MAST)@BR#5938	C	I	.	.	.	380	.
11 PITTSTON	51107	02278	IR 2278(KELLEY) W/O IR 413(MAST)@BR#6057	C	I	.	.	.	450	.
11 RANDOLPH	00201	0009X	SR 9 (WATER ST) N/O BELMONT AVE	C	ATR92304	9640	.	.	8890	.
11 RANDOLPH	00601	0009X	SR 9(WATER) N/O GARDINER-RANDOLPH BR	C	ATR92304	10970	.	.	9740	.
11 RANDOLPH	00801	0027X	SR 27/126 (WATER) N/O SR 226 (WINDSOR)	C	I	.	.	.	17460	.
11 RANDOLPH	00805	0027X	SR 27/126 (WATER) S/O SR 226 (WINDSOR)	C	I	13110	.	.	12010	.

2007 Maine Transportation Count Book

Kennebec

TOWN	STATION	ROAD	LOCATION	TYPE	GROUP	AADT03	AADT04	AADT05	AADT06	AADT07
11 RANDOLPH	01804	0027X	SR 27/126 (WATER) SE/O IGA @ TOGUS BK	C	I	.	.	.	11250	.
11 RANDOLPH	00203	01391	BELMONT AVE E/O SR 9 (WATER ST)	C	I	460	.	.	400	.
11 RANDOLPH	00703	01392	CENTRAL ST E/O SR 27/126 (WATER ST)	C	I	.	.	.	160	.
11 RANDOLPH	00403	01395	CLOSSON ST E/O SR 9 (WATER ST)	C	I	.	.	.	350	.
11 RANDOLPH	00101	01398	HILLCREST AVE N/O CLOSSON ST	C	I	.	.	.	130	.
11 RANDOLPH	00301	01398	HILLCREST AVE N/O CENTRAL ST	C	I	.	.	.	300	.
11 RANDOLPH	01406	01400	KINDERHOOK ST SW/O SR 226 (WINDSOR ST)	C	I	1190	.	.	960	.
11 RANDOLPH	00901	01405	PLEASANT ST N/O SR 226 WINDSOR ST	C	I	.	.	.	380	.
11 RANDOLPH	00503	01406	SCHOOL ST E/O SR 9 (WATER ST)	C	I	.	.	.	520	.
11 RANDOLPH	00803	0226X	SR 226 (WINDSOR RD) E/O SR 27/126(WATER)	C	I	7480	.	.	6760	.
11 RANDOLPH	01407	0226X	SR 226 (WINDSOR ST) W/O KINDERHOOK ST	C	I	6660	.	.	5920	.
11 READFIELD	40807	0017X	SR 17 (MAIN ST) W/O SR 41 (CHIMNEY RD)	C	I	.	.	.	2510	.
11 READFIELD	40903	0017X	SR 17 (MAIN ST) E/O SR 41 (WINTHROP RD)	C	I	5440	.	.	4970	.
11 READFIELD	40907	0017X	SR 17/41(MAIN ST) W/O SR 41(WINTHROP RD)	C	I	4740	.	.	4260	.
11 READFIELD	41303	0017X	SR 17/135(MAIN ST) E/O IR 323(PLAINS RD)	C	I	6270	.	.	6090	.
11 READFIELD	41403	0017X	SR 17 (MAIN ST) E/O SR 135 (GORDEN RD)	C	I	5590	.	.	5530	.
11 READFIELD	65601	00315	IR 315(NORTH RD) N/O IR 671(WINGS MILLS)	C	I	830	.	.	680	.
11 READFIELD	65701	00315	IR 315 (NORTH RD) N/O SR 17 (MAIN ST)	C	I	1710	.	.	1530	.
11 READFIELD	41006	00317	IR 317 (SOUTH RD) SW/O SR 17 (MAIN ST)	C	I	840	.	.	950	.
11 READFIELD	41301	00323	IR 323(PLAINS RD) N/O SR 17/135(MAIN ST)	C	I	750	.	.	660	.
11 READFIELD	41105	00341	IR 341(MEMORIAL) S/O IR 2096(BEAVER DAM)	C	II+III	410	.	.	390	.
11 READFIELD	34100	0041X	SR 41 (WINTHROP RD) @ WINTHROP TL	C	I	1400	.	.	1350	.
11 READFIELD	40808	0041X	SR 41 (CHIMNEY RD) NW/O SR 17 (MAIN ST)	C	I	.	.	.	1350	.
11 READFIELD	40905	0041X	SR 41 (WINTHROP RD) S/O SR 17 (MAIN ST)	C	I	1830	.	.	1570	.
11 READFIELD	65602	00671	IR 671(WINGS MILLS RD) NE/O IR315(NORTH)	C	I	580	.	.	520	.
11 READFIELD	41206	0135X	SR 135 (STANLEY RD) SW/O SR 17 (MAIN ST)	C	I	1080	.	.	820	.
11 READFIELD	41401	0135X	SR 135 (GORDEN RD) N/O SR 17 (MAIN ST)	C	II	1000	.	.	1060	.
11 READFIELD	40901	02055	IR 2055 (CHURCH RD) N/O SR 17 (MAIN ST)	C	I	1160	.	.	1320	.
11 READFIELD	45203	02082	IR 2082(SCRIBNER HILL) E/O SR135(GORDEN)	C	I	.	.	.	270	.
11 READFIELD	41104	02096	IR 2096(BEAVER DAM)SE/O IR 341(MEMORIAL)	C	II+III	340	.	.	330	.
11 READFIELD	41108	02096	IR 2096 (BEAVER DAM RD) NW/O IR 341	C	II+III	.	.	.	470	.
11 READFIELD	51605	02183	IR 2183(STURTEVANT HILL RD) S/O SR 17/41	C	I	930	.	.	870	.
11 ROME	38905	0027X	SR 27 S/O SR 225	C	II	2670	.	.	3150	.
11 ROME	38908	0027X	SR 27 NW/O SR 225	C	II	2590	.	.	3050	.

2007 Maine Transportation Count Book

County

Kennebec

TOWN	STATION	ROAD	LOCATION	TYPE	GROUP	AADT03	AADT04	AADT05	AADT06	AADT07	
11	ROME	40108	0027X	SR 27 NW/O IR 2041 (WATSON POND RD)	C	II	2280	.	.	2690	.
11	ROME	93801	0027X	SR 27 N/O IR 722 (RICHARDSON RD)	C	II	3020	.	.	3730	.
11	ROME	40106	02041	IR 2041 (WATSON POND RD) SW/O SR 27	C	I	450	.	.	340	.
11	ROME	38806	0225X	SR 225 SW/O IR 2088 (WOOSTER HILL RD)	C	II	1490	.	.	1380	.
11	ROME	38902	0225X	SR 225 NE/O IR 333 (DRURY LN)	C	II	1730	.	.	1600	.
11	ROME	52103	0225X	SR 225 E/O IR 329 (JAMAICA POINT RD)	C	II	1820	.	.	1740	.
11	SIDNEY	34408	0008X	SR 8/11/27 (BELGRADE) NW/O SR 23 (POND)	C	II	7070	.	7300	6910	.
11	SIDNEY	34401	0023X	SR 23 (POND RD) N/O SR 8/11/27	C	I+II	2350	.	.	2400	.
11	SIDNEY	36001	0023X	SR 23 (POND RD) N/O IR 1524 (QUAKER RD)	C	I+II	1620	.	.	1560	.
11	SIDNEY	37405	0023X	SR 23 (POND RD) S/O IR 2248 (DRUMMOND)	C	I	1260	.	.	1130	.
11	SIDNEY	63207	00366	IR 366 (SHEPARD RD) W/O IR 2281(MIDDLE)	C	I	1030	.	.	1220	.
11	SIDNEY	53104	0095S	I-95 (SB) N/O OFF RAMP TO LYONS RD	A	ATR53104	12590	.	13480	14200	14230
11	SIDNEY	53102	0095S	I-95 (SB) N/O ON RAMP FROM LYONS RD	I	ATR53104	12420	.	13120	.	13580
11	SIDNEY	53103	0095X	I-95 (NB) N/O ON RAMP FROM LYONS RD	A	ATR53103	12560	.	13140	14030	14190
11	SIDNEY	53101	0095X	I-95 (NB) N/O OFF RAMP TO LYONS RD	I	ATR53103	12320	.	12890	.	13540
11	SIDNEY	34506	0104X	SR 104 SW/O IR 1696 (TOWN LANDING RD)	C	I	1280	.	.	1470	.
11	SIDNEY	34701	0104X	SR 104 (W RIVER RD) N/O IR 2238 (LYONS)	C	I	2380	.	.	2560	.
11	SIDNEY	34705	0104X	SR 104 (W RIVER RD) S/O IR 2238 (LYONS)	C	I	1370	.	.	1460	.
11	SIDNEY	37601	0104X	SR 104 (W RIVER) N/O IR 2248 (DRUMMOND)	C	I	2490	.	.	2640	.
11	SIDNEY	34707	02238	IR 2238 (LYONS RD) W/O SR 104 (W RIVER)	C	I	1840	.	.	1730	.
11	SIDNEY	34806	02238	IR 2238 (LYONS RD) SW/O I-95 (SB) RAMPS	C	I	1570
11	SIDNEY	37607	02248	IR 2248(DRUMMOND RD) W/O SR 104(W RIVER)	C	I	530	.	.	540	.
11	SIDNEY	63201	02281	IR 2281 (MIDDLE) N/O IR 366 (DINSMORE)	C	I	2030	.	.	1870	.
11	SIDNEY	63205	02281	IR 2281 (MIDDLE) S/O IR 366 (SHEPARD RD)	C	I	1860	.	.	1740	.
11	SIDNEY	63501	02281	IR 2281 (MIDDLE) N/O IR 2248 (DRUMMOND)	C	I	2050	.	.	2080	.
11	SIDNEY	63505	02281	IR 2281 (MIDDLE) S/O IR 2248 (DRUMMOND)	C	I	1980	.	.	1960	.
11	VASSALBORO	66402	0003X	SR 3/US 202 NE/O IR 1725(BOAT LAUNCH RD)	A	ATR66402	.	.	.	7800	7700
11	VASSALBORO	50906	0003X	SR 3/9/US 202 SW/O IR 2234 (STONE RD)	C	II	8730	.	.	7720	.
11	VASSALBORO	35005	0032X	SR 32 S/O IR 447 (S STANLEY HILL RD)	C	I	2990	.	.	2670	.
11	VASSALBORO	37704	0032X	SR 32 SE/O IR 1243 (MAPLE ST)	C	I	4070	.	.	4110	.
11	VASSALBORO	37708	0032X	SR 32 NW/O IR 1242 (PREBLE HILL RD)	C	I	4660	.	.	4460	.
11	VASSALBORO	91103	00386	IR 386 (BOG RD) E/O SR 100/US 201	C	I	1480	.	.	1360	.
11	VASSALBORO	35007	00390	IR 390 (BOG RD) W/O SR 32	C	I	1680	.	.	1330	.
11	VASSALBORO	37706	00392	IR 392 (OAK GROVE) SW/O IR 3075 (CANAL)	C	I	1560	.	.	1300	.

2007 Maine Transportation Count Book

Kennebec

TOWN	STATION	ROAD	LOCATION	TYPE	GROUP	AADT03	AADT04	AADT05	AADT06	AADT07
11 VASSALBORO	64102	00392	IR 392 (OAK GROVE RD) NE/O SR 100/US 201	C	I	1010	.	.	900	.
11 VASSALBORO	33001	00439	IR 439 (CROSS HILL) N/O IR 2234 (STONE)	C	I	590	.	.	530	.
11 VASSALBORO	33104	00441	IR 441 (TABER HILL) SE/O IR 392 (OAK GR)	C	I	440	.	.	420	.
11 VASSALBORO	50801	00443	IR 443(WEBBER PD) N/O IR 2234(HANNAFORD)	C	I	1100	.	.	980	.
11 VASSALBORO	35003	00447	IR 447 (S STANLEY HILL RD) E/O SR 32	C	I	1020	.	.	850	.
11 VASSALBORO	37702	00447	IR 447(PRIEST HILL) NE/O IR 1242(PREBLE)	C	I	900	.	.	920	.
11 VASSALBORO	97805	0100X	SR 100/US201 S/O IR3106(CUSHNOC RD)(NJCT	A	ATR97805	4470	4420	4120	4030	4030
11 VASSALBORO	32402	0100X	SR 100/US 201 NE/O IR 1891 @ WINSLOW TL	C	ATR97805	5550	.	.	4850	.
11 VASSALBORO	64101	0100X	SR 100/US 201 N/O IR 392 (OAK GROVE RD)	C	ATR97805	5210	.	.	4410	.
11 VASSALBORO	90905	0100X	SR 100/US 201 S/O IR 2234 (WEBBER POND)	C	ATR97805	5550
11 VASSALBORO	91101	0100X	SR 100/US 201 N/O IR 386 (BOG RD)	C	ATR97805	5340	.	.	4410	.
11 VASSALBORO	91105	0100X	SR 100/US 201 S/O IR 386 (BOG RD)	S	ATR97805	4900	.	3970	.	4540
11 VASSALBORO	50803	02234	IR 2234(HANNAFORD) E/O IR 443 @ BR# 3722	C	I	800	.	.	820	.
11 VASSALBORO	50904	02234	IR 2234 (LEGION PARK RD) SE/O SR 3/9/202	C	I	550	.	.	550	.
11 VASSALBORO	50908	02234	IR 2234 (STONE RD) NW/O SR 3/9/US 202	C	I	520	.	.	480	.
11 VASSALBORO	90903	02234	IR 2234 (WEBBER POND) E/O SR 100/US 201	C	I	1240	.	.	1280	.
11 VIENNA	40003	0041X	SR 41 E/O IR 2033 (KIMBALL PD) @BR# 2901	C	I	1250	.	.	1160	.
11 VIENNA	40008	0041X	SR 41 NW/O IR 2033 (KIMBALL POND RD)	C	I	1120	.	.	1080	.
11 VIENNA	40201	0041X	SR 41 N/O IR 2021 (TOWER RD)	C	II	1290	.	.	1220	.
11 VIENNA	40204	0041X	SR 41 SE/O IR 2021 (TOWER RD)	C	I	1000	.	.	950	.
11 VIENNA	40205	02021	IR 2021 (TOWER RD) S/O SR 41	C	I	270
11 VIENNA	40001	02033	IR 2033 (KIMBALL POND RD) N/O SR 41	C	I	.	.	.	230	.
11 WATERVILLE	01502	0011X	SR11/100/202 (COLLEGE AVE) NE/O ALLEN ST	C	I	.	.	.	11350	.
11 WATERVILLE	05002	0011X	SR 11/100 (COLLEGE AVE) NE/O UNION ST	C	I	12150	.	.	10900	.
11 WATERVILLE	05101	0011X	SR 11/104 (ELM) N/O SR 137 BUS (SILVER)	C	I	8540	.	.	7770	.
11 WATERVILLE	05106	0011X	SR11/104/137(SILVER) SW/O SR 11/104(ELM)	C	I	14300
11 WATERVILLE	05605	0011X	SR 11/104 (ELM ST) S/O ELM TERRACE	C	I	14610	.	.	11600	.
11 WATERVILLE	05903	0011X	SR 11/137 (KMD) E/O FIRST RANGEWAY	C	I	17500	.	.	17950	.
11 WATERVILLE	05907	0011X	SR 11/137 (KMD) W/O FIRST RANGEWAY	C	I	19390	.	.	19640	.
11 WATERVILLE	07103	0011X	SR 11/137 (KMD) E/O AIRPORT RD	C	I	19370	.	.	19730	.
11 WATERVILLE	07306	0011X	SR 11/137 (KMD) SW/O I-95 (SB) ON RAMP	C	I	15980
11 WATERVILLE	08201	0011X	SR 11/100/US 201 (COLLEGE) N/O OAK ST	C	I	16350	.	.	13230	.
11 WATERVILLE	10606	00298	ABENAKI RD SW/O SR 137 (CARTER MEM BR)	C	I	3600	.	.	3400	.
11 WATERVILLE	11007	00734	RICES RIPS RD W/O MARSTON RD	C	I	2050	.	.	1940	.

2007 Maine Transportation Count Book

Kennebec

	TOWN	STATION	ROAD	LOCATION	TYPE	GROUP	AADT03	AADT04	AADT05	AADT06	AADT07
11	WATERVILLE	52902	0095S	I-95 (SB) N/O ON RAMP FROM SR104(N MAIN)	I	ATR53104	9440	.	10680	.	10880
11	WATERVILLE	52904	0095S	I-95 (SB) N/O OFF RAMP TO SR 104(N MAIN)	I	ATR53104	12070	.	13280	.	13480
11	WATERVILLE	53002	0095S	I-95(SB) N/O ON RAMP FROM SR11/137 KMDEB	I	ATR53104	12400	.	12690	.	13290
11	WATERVILLE	53004	0095S	I-95(SB) N/O ON RAMP FROM SR11/137 KMDWB	I	ATR53104	10740	.	10400	.	10400
11	WATERVILLE	53006	0095S	I-95 (SB) N/O OFF RAMP TO SR 11/137(KMD)	I	ATR53104	13840	.	15350	.	15020
11	WATERVILLE	52901	0095X	I-95 (NB) N/O OFF RAMP TO SR 104(N MAIN)	I	ATR53103	10760	.	10080	.	10280
11	WATERVILLE	52903	0095X	I-95 (NB) N/O ON RAMP FROM SR104(N MAIN)	I	ATR53103	12150	.	12670	.	13020
11	WATERVILLE	53001	0095X	I-95 (NB) N/O OFF RAMP TO SR 11/137(KMD)	I	ATR53103	10040	.	9780	.	9650
11	WATERVILLE	53003	0095X	I-95(NB) N/O ON RAMP FROM SR 11/137(KMD)	I	ATR53103	14210	.	14720	.	14450
11	WATERVILLE	05604	0100X	SR 100/US 201(SB)(MAIN ST) SE/O ALLEN RD	C	I	10620	.	.	8840	.
11	WATERVILLE	06101	0100X	SR 100/201 (FRONT)OW N/O REVERSE DIR RMP	C	I	9270	.	.	7020	.
11	WATERVILLE	06103	0100X	SR 100/137 BUS E/O WATER ST @ WINSLOW TL	C	I	22960	.	.	19330	.
11	WATERVILLE	06108	0100X	SR 100(MAIN ST)(OW) NW/O REVERSE DIR RMP	C	I	10440	.	.	8310	.
11	WATERVILLE	07805	0100X	SR 100/US 201(FRONT)OW S/O CONNECTOR "A"	C	I	6970	.	.	5730	.
11	WATERVILLE	01908	0104X	SR 104 (MAIN ST) NW/O RIDGE RD	C	I	8160	.	.	7980	.
11	WATERVILLE	02604	0104X	SR 104 (MAIN ST) SE/O KELSEY ST	C	I	.	.	.	15280	.
11	WATERVILLE	02708	0104X	SR 104 (MAIN ST) NW/O EUSTIS PKWY	C	I	17950	.	.	18370	.
11	WATERVILLE	05608	0104X	SR 104 (MAIN ST) NW/O COLLEGE AVE	C	I	12820	.	.	12370	.
11	WATERVILLE	06806	0104X	SR 104 (W RIVER) SW/O SR 11/104/137(KMD)	C	I	.	.	.	7830	.
11	WATERVILLE	07401	0104X	SR 104 (MAIN ST) N/O SANGER AVE	C	I	15600	.	.	14500	.
11	WATERVILLE	10402	0104X	SR 104 (W RIVER RD) NE/O WEBB RD	C	I	5900	.	.	9290	.
11	WATERVILLE	06107	0137C	SPRING ST W/O SR 100 (MAIN ST)	C	I	10390
11	WATERVILLE	06006	0137X	BUS 137 (SILVER ST) SW/O SPRING ST	C	I	7600	.	.	6990	.
11	WATERVILLE	10604	0137X	SR 137 (CARTER MEM BR) SE/O ABENAKI RD	C	I	11140	.	.	10420	.
11	WATERVILLE	10608	0137X	SR 137 (CARTER MEM BR APP) NW/O ABENAKI	C	I	9130	.	.	8650	.
11	WATERVILLE	02203	50007	ARMORY RD E/O SR 104 (MAIN ST)	C	I	10310	.	.	9290	.
11	WATERVILLE	05607	50039	CENTER ST (OW) W/O SR 11/104 (ELM ST)	C	I	640	.	.	570	.
11	WATERVILLE	06907	50045	CHASE AVE W/O FIRST RANGEWAY	C	I	3150	.	.	2810	.
11	WATERVILLE	10802	50055	COOL ST NE/O SAWTELLE ST	C	I	5010	.	.	5350	.
11	WATERVILLE	02301	50062	DRUMMOND AVE N/O ARMORY RD	C	I	4060	.	.	3570	.
11	WATERVILLE	02706	50074	EUSTIS PKWY SW/O SR 104 (MAIN ST)	C	I	5990	.	.	6280	.
11	WATERVILLE	05902	50078	FIRST RANGEWAY NE/O SR 11/137 (KMD)	C	I	6080	.	.	4790	.
11	WATERVILLE	06906	50078	FIRST RANGEWAY SW/O WESTERN AVE	C	I	5840	.	.	4550	.
11	WATERVILLE	09902	50078	FIRST RANGEWAY NE/O ELMHURST	C	I	3410	.	.	3440	.

2007 Maine Transportation Count Book

County

Kennebec

TOWN	STATION	ROAD	LOCATION	TYPE	GROUP	AADT03	AADT04	AADT05	AADT06	AADT07
11 WATERVILLE	01107	50087	GILMAN ST W/O PLEASANT ST	C	I	2920	.	.	2730	.
11 WATERVILLE	08703	50087	GILMAN ST E/O MESSALONSKEE AVE @ BR	C	I	4630	.	.	4400	.
11 WATERVILLE	06604	50097	GROVE ST SE/O SR 137 (CARTER MEM DR)	C	I	3820	.	.	3140	.
11 WATERVILLE	01807	50105	HAZELWOOD AVE W/O SR 11/100(COLLEGE AVE)	C	I	5960	.	.	5970	.
11 WATERVILLE	02606	50119	JOHNSON HTS SW/O SR 104 (MAIN ST)	C	I	.	.	.	350	.
11 WATERVILLE	02603	50121	KELSEY ST E/O SR 104 (MAIN ST)	C	I	.	.	.	330	.
11 WATERVILLE	02007	50148	NORTH ST HILL W/O COUNTY RD	C	I	5140	.	.	5040	.
11 WATERVILLE	04907	50148	MAYFLOWER HILL DR W/O FIRST RANGEWAY	C	I	2010	.	.	2060	.
11 WATERVILLE	11300	50148	MAYFLOWER HILL DR @ COLBY COLLEGE ENT	C	I	2960	.	.	3030	.
11 WATERVILLE	11406	50148	MAYFLOWER HILL DR SW/O CAMPUS DR	C	I	3930	.	.	3700	.
11 WATERVILLE	03104	50166	NORTH ST SE/O EUSTIS PKWY	C	I	3990	.	.	3970	.
11 WATERVILLE	03108	50166	NORTH ST NW/O EUSTIS PKWY	C	I	.	.	.	6160	.
11 WATERVILLE	04007	50166	NORTH ST W/O SR 104 (MAIN ST)	C	I	3380	.	.	3410	.
11 WATERVILLE	09608	50166	NORTH ST NW/O WEST ST @ BR	C	I	.	.	.	4760	.
11 WATERVILLE	02703	50170	OAK ST E/O SR 104 (MAIN ST)	C	I	3790	.	.	3660	.
11 WATERVILLE	08207	50170	OAK ST W/O SR 11/100/US 201 (COLLEGE)	C	I	3080	.	.	2690	.
11 WATERVILLE	07406	50187	PLEASANT ST SW/O SR 104 (MAIN ST)	C	I	4480	.	.	4170	.
11 WATERVILLE	09502	50187	PLEASANT ST NE/O WESTERN AVE	C	I	3420	.	.	2770	.
11 WATERVILLE	01902	50197	RIDGE RD NE/O SR 104 (MAIN ST)	C	I	1500	.	.	1210	.
11 WATERVILLE	06106	50255	WATER ST SW/O SPRING ST RAMPS	C	I	5880	.	.	4830	.
11 WATERVILLE	09605	50259	WEST ST S/O NORTH ST	C	I	2890	.	.	2440	.
11 WATERVILLE	04807	50260	WESTERN AVE W/O SR 11/104 (ELM ST)	C	I	6340	.	.	5600	.
11 WATERVILLE	06904	50260	WESTERN AVE SE/O FIRST RANGEWAY	C	I	4490	.	.	3650	.
11 WATERVILLE	09008	50260	WESTERN AVE NW/O MESSALONSKEE AVE	C	I	.	.	.	4390	.
11 WATERVILLE	11003	50283	RICES RIPS RD E/O MARSTON RD @ I-95 BR	C	I	2910	.	.	2720	.
11 WATERVILLE	11102	50283	CAMPUS DR NE/O RICES RIPS RD	C	I	4430	.	.	4240	.
11 WATERVILLE	11408	50283	CAMPUS DR NW/O MAYFLOWER HILL DR	C	I	5150	.	.	5020	.
11 WATERVILLE	06701	50303	WASHINGTON ST N/O SR 11/137 (KMD)	C	I	5330	.	.	5560	.
11 WATERVILLE	11105	50303	WASHINGTON ST S/O RICES RIPS RD	C	I	3980
11 WATERVILLE	11201	50303	WASHINGTON ST N/O SENIOR APTS ENT	C	I	3490	.	.	3250	.
11 WATERVILLE	11205	50303	WASHINGTON ST S/O SENIOR APTS ENT	C	I	3350	.	.	3260	.
11 WATERVILLE	11002	50316	MARSTON RD NE/O RICES RIPS RD	C	I	880	.	.	850	.
11 WAYNE	42403	0133X	SR 133 E/O IR 2081 (OLD WINTHROP RD)	C	I	3810	.	.	3680	.
11 WAYNE	42504	0133X	SR 133 SE/O SR 219 (LEEDS RD)	C	I	3540	.	.	3420	.

2007 Maine Transportation Count Book

Kennebec

TOWN	STATION	ROAD	LOCATION	TYPE	GROUP	AADT03	AADT04	AADT05	AADT06	AADT07
11 WAYNE	42508	0133X	SR 133(BEECH HILL RD) NW/O SR 219(LEEDS)	C	I	1850	.	.	1800	.
11 WAYNE	97004	0133X	SR 133 SE/O IR 2091 (GREENTRUE RD)	C	I	4140	.	.	3950	.
11 WAYNE	35302	02030	IR 2030(KINGS HWY) NE/O SR133(BEECH HILL	C	I	200	.	.	200	.
11 WAYNE	42303	02030	IR 2030(KENTS HILL) E/O IR 2073 @BR#2624	C	I	.	.	.	460	.
11 WAYNE	53703	02030	IR 2030 (WALTON RD) E/O IR 2061(POND RD)	C	I	.	.	.	500	.
11 WAYNE	32302	02061	IR 2061 (POND RD) NE/O SR 133	C	I	900	.	.	840	.
11 WAYNE	53705	02061	IR 2061 (POND RD) S/O IR 2030 @ BR# 5550	C	I	.	.	.	560	.
11 WAYNE	42404	02081	IR 2081 (OLD WINTHROP RD) SE/O SR 133	C	I	820	.	.	800	.
11 WAYNE	45704	02085	IR 2085(N WAYNE) SE/O IR2030(KENTS HILL	C	I	.	.	.	460	.
11 WAYNE	97005	02091	IR 2091 (FAIRBANKS RD) S/O SR 133	C	I	440	.	.	400	.
11 WAYNE	42507	0219X	SR 219 (LEEDS RD) W/O SR 133(BEECH HILL)	C	I+II	2150	.	.	1930	.
11 WAYNE	53800	02306	IR 2306 (MT PISGAH RD) @ BR# 0524 @ TL	C	I	.	.	.	410	.
11 WEST GARDINER	44407	0009X	SR 9/126 W/O IR 1343 (S JCT)	C	I	6980	.	.	6980	.
11 WEST GARDINER	50603	0009X	SR 9/126 E/O IR 2239 (BOG HILL RD)	C	I	3700	.	.	4090	.
11 WEST GARDINER	50503	00322	IR 322 (HIGHLAND AVE) E/O IR 324	C	I	1300	.	.	1300	.
11 WEST GARDINER	94803	00322	IR 322 (HIGHLAND AVE) E/O IR 2243	C	I	2070	.	.	2040	.
11 WEST GARDINER	50402	00324	IR 324 (HALLOWELL) NE/O IR 2245 (BENSON)	C	I	2600	.	.	2410	.
11 WEST GARDINER	50502	00324	IR 324 (HALLOWELL) NE/O IR 322(HIGHLAND)	C	I	1120	.	.	1020	.
11 WEST GARDINER	64605	00353	IR 353 (NECK RD) S/O IR 2243	C	I	1020	.	.	1040	.
11 WEST GARDINER	53402	0095S	I-295 (SB) S/O ON RAMP FROM SR 9/126	I	II	.	9690	.	9900	.
11 WEST GARDINER	53404	0095S	I-295 (SB) S/O OFF RAMP TO SR 9/126	I	II	.	8600	.	9150	.
11 WEST GARDINER	53401	0095X	I-295 (NB) S/O OFF RAMP TO SR 9/126	I	II	.	9930	.	9880	.
11 WEST GARDINER	53403	0095X	I-295 (NB) N/O OFF RAMP TO SR 9/126	I	II	.	8850	.	8920	.
11 WEST GARDINER	50602	02239	IR 2239 (SPEARS CORNER RD) NE/O SR 9/126	C	I	1530	.	.	1700	.
11 WEST GARDINER	53106	02241	IR 2241 (INDIANA RD) SW/O SR 9/126	C	I	550
11 WEST GARDINER	94808	02243	IR 2243 (TOWNHOUSE RD) NW/O IR 322	C	I	1780	.	.	1870	.
11 WEST GARDINER	50407	02245	IR 2245 (BENSON) W/O IR 324 (HALLOWELL)	C	I	820	.	.	790	.
11 WINDSOR	31903	0017X	SR 17/32 E/O IR 511 (HUNTS MEADOW RD)	C	I	8560	.	.	7370	.
11 WINDSOR	31907	0017X	SR 17 (AUGUSTA RD) W/O SR 32 (RIDGE RD)	C	I	8330	.	.	7240	.
11 WINDSOR	31901	0032X	SR 32 (RIDGE RD) N/O SR 17 @ BR	C	I	3800	.	.	3330	.
11 WINDSOR	33704	0032X	SR 32 (RIDGE RD) SE/O IR 372 (TYLER RD)	C	I	2710	.	.	2290	.
11 WINDSOR	33708	0032X	SR 32 (RIDGE RD) NW/O IR 372 (TYLER RD)	C	I	2690	.	.	2210	.
11 WINDSOR	63101	0032X	SR 32(RIDGE RD) N/O SR105(S BELFAST AVE)	C	I	3220	.	.	2890	.
11 WINDSOR	63105	0032X	SR 32(RIDGE RD) S/O SR105(S BELFAST AVE)	C	I	4020	.	.	3360	.

2007 Maine Transportation Count Book

Kennebec

TOWN	STATION	ROAD	LOCATION	TYPE	GROUP	AADT03	AADT04	AADT05	AADT06	AADT07
11 WINDSOR	33702	00372	IR 372 (TYLER RD) NE/O SR 32 (RIDGE RD)	C	I	670	.	.	610	.
11 WINDSOR	33706	00372	IR 372(WEEKS MILLS RD) SW/O SR 32(RIDGE)	C	I	540	.	.	500	.
11 WINDSOR	54004	00410	IR 410 (MAXCYS MILL) SE/O IR 485@BR#1730	C	I	.	.	.	460	.
11 WINDSOR	54104	00422	IR 422 (CHOATE RD) SE/O IR 509 @ BR#0500	C	I	.	.	.	180	.
11 WINDSOR	54102	00509	IR 509(SHUMAN) 0.5MI NE/O IR 422@BR#0512	C	I	.	.	.	40	.
11 WINDSOR	31905	00511	IR 511(HUNTS MEADOW RD) S/O SR 17	C	I	530	.	.	430	.
11 WINDSOR	51003	0105X	SR 105 E/O IR 489 (WINGOOD RD)	C	I	920	.	880	720	.
11 WINDSOR	63103	0105X	SR 105(S BELFAST AVE) E/O SR32(RIDGE RD)	C	I	1540	.	.	1280	.
11 WINDSOR	63107	0105X	SR 105(S BELFAST AVE) W/O SR32(RIDGE RD)	C	I	1790	.	.	1260	.
11 WINSLOW	00303	0032X	SR 32/137 (CHINA) E/O SR 100/137(BAY ST)	C	I	18570	.	.	15230	.
11 WINSLOW	01008	0032X	SR 32 NW/O BASSETT RD @BR# 3710	C	I	4320
11 WINSLOW	01105	0032X	SR 32 (CUSHMAN RD) S/O SR 137 (CHINA RD)	C	I	5830	.	.	4990	.
11 WINSLOW	01903	00438	ALBION RD E/O GARLAND RD	C	I	1440	.	.	1310	.
11 WINSLOW	02003	00438	IR 438 (ALBION RD) E/O IR 539 (ABBOTT)	C	I	1360	.	.	1190	.
11 WINSLOW	01205	00459	REYNOLDS RD S/O SR 137 (CHINA RD)	C	I	690	.	.	710	.
11 WINSLOW	01402	00461	N POND RD NE/O SR 137 (CHINA RD)	C	I	830	.	.	710	.
11 WINSLOW	01506	00463	IR 463 (MAPLE RIDGE) SW/O SR 137 (CHINA)	C	I	680	.	.	680	.
11 WINSLOW	01905	00467	GARLAND RD S/O ALBION RD	C	I	.	.	.	2110	.
11 WINSLOW	02004	00539	IR 539 (ABBOTT RD) SE/O IR 438 (ALBION)	C	I	840	.	.	760	.
11 WINSLOW	00202	0100A	SR 100A (HALIFAX ST) NE/O SR 100(BAY ST)	C	I	5830	.	.	4990	.
11 WINSLOW	00503	0100A	SR 100A (HALIFAX ST) E/O CLINTON AVE	C	I	3360	.	.	2570	.
11 WINSLOW	02507	0100A	SR 100A (HALIFAX ST) W/O WHIPPLE ST	C	I	3060	.	.	2790	.
11 WINSLOW	04302	0100A	SR 100A (HALIFAX RD) NE/O SMILEY RD	C	I	.	.	.	2130	.
11 WINSLOW	00201	0100X	SR 100/137/US 201 (BAY) N/O SR 100A	C	I	16760	.	.	14040	.
11 WINSLOW	00301	0100X	SR 100/137/US 201 (BAY) N/O SR 32(CHINA)	C	I	21020	.	.	18930	.
11 WINSLOW	00306	0100X	SR 100/US 201 (AUGUSTA RD) SW/O CHINA RD	S	I	8980
11 WINSLOW	00701	0100X	SR 100/US 201 (AUGUSTA) N/O CARTER MEM	C	I	7270	.	.	7200	.
11 WINSLOW	00705	0100X	SR100/US 201(AUGUSTA) S/O SR137 (CARTER)	C	I	6770	.	.	6490	.
11 WINSLOW	03806	0100X	SR 100/US 201(AUGUSTA) SW/O CLIFFORD AVE	C	I	.	.	.	7720	.
11 WINSLOW	01103	0137C	SR 137 (CHINA RD) E/O SR 32 (CUSHMAN RD)	C	I	.	.	.	7950	.
11 WINSLOW	00703	0137X	SR 137 (CARTER MEM RD) E/O SR 100/US 201	C	I	6620	.	.	6360	.
11 WINSLOW	01504	0137X	SR 137 (CHINA) SE/O IR 463 (NOWELL RD)	C	II	4770	.	.	4520	.
11 WINSLOW	04403	0137X	SR 137 (CHINA) E/O DUNBAR @ BR# 2362	C	I	7940	.	.	7260	.
11 WINSLOW	00101	60007	BENTON AVE N/O CLINTON AVE	C	I	.	.	.	8610	.

2007 Maine Transportation Count Book

Kennebec

TOWN	STATION	ROAD	LOCATION	TYPE	GROUP	AADT03	AADT04	AADT05	AADT06	AADT07
11 WINSLOW	03002	60007	BENTON AVE NE/O STOBIE ST	C	I	.	.	.	7550	.
11 WINSLOW	03006	60007	BENTON AVE SW/O STOBIE ST	C	I	.	.	.	7790	.
11 WINSLOW	03206	60007	BENTON AVE SW/O BARTON ST	C	I	7210	.	.	7340	.
11 WINSLOW	00507	60019	CLINTON AVE W/O SR 100A (HALIFAX ST)	C	I	2350	.	.	1830	.
11 WINSLOW	02303	60019	CLINTON AVE E/O GARAND ST	C	I	7000	.	.	6030	.
11 WINSLOW	00404	60022	DANIELSON ST SE/O BENTON AVE	C	I	.	.	.	2390	.
11 WINSLOW	03905	60031	GARAND ST S/O STOBIE ST	C	I	1360	.	.	1270	.
11 WINSLOW	01300	60032	GARLAND RD @ CUL @ BR# 3228	C	I	2450	.	.	2140	.
11 WINSLOW	00307	60046	LITHGOW ST W/O SR 100/US 201(AUGUSTA RD)	C	I	580	.	.	550	.
11 WINSLOW	03004	60068	STOBIE ST SE/O BENTON AVE	C	I	.	.	.	270	.
11 WINSLOW	04001	60087	SMILEY AVE N/O CLINTON AVE	C	I	2040	.	.	1650	.
11 WINTHROP	04012	0011W	SR 11/100/US 202 (WB) NE/O MAIN ST	C	ATR41907	7310	.	.	7140	.
11 WINTHROP	41907	0011X	SR 11/US 202 W/O IR 941 (WELCHS PT RD)	A	ATR41907	15180	14740	14460	14560	14180
11 WINTHROP	00502	0011X	SR 11/100/US 202 NE/O ANNABESSACOOK RD	C	ATR41907	12750	.	12220	11950	.
11 WINTHROP	00506	0011X	SR 11/100/US 202 SW/O OLD LEWISTON RD	C	ATR41907	9590	.	10000	9870	.
11 WINTHROP	01803	0011X	SR 11/100/US 202 E/O HIGHLAND AVE	C	ATR41907	10330	.	.	10370	.
11 WINTHROP	01807	0011X	SR 11/100/US 202 W/O HIGHLAND AVE	C	ATR41907	10280	.	.	9950	.
11 WINTHROP	04002	0011X	SR 11/100/US 202 (EB) NE/O MAIN ST	C	ATR41907	7520	.	.	7200	.
11 WINTHROP	40703	0011X	SR 11/100/US 202 E/O SR 135 (E JCT)	C	ATR41907	14920	.	.	14300	.
11 WINTHROP	41807	0011X	SR 11/100/US 202 W/O SR 135 (W JCT)	C	ATR41907	14860	.	.	14200	.
11 WINTHROP	41903	0011X	SR11/US202 E/O IR2566(TURTLE RUN)(M JCT)	S	ATR41907	.	.	15850	.	14730
11 WINTHROP	00205	00305	ANNABESSACOOK RD S/O ANNABESSACOOK DR	C	I	1360	.	.	1140	.
11 WINTHROP	00505	00305	ANNABESSACOOK RD S/O SR 11/100/US 202	C	I	1610	.	1350	1540	.
11 WINTHROP	01502	00341	METCALF RD NE/O MAIN ST	C	I	990	.	.	990	.
11 WINTHROP	36701	00341	IR 341 (BEARCE RD) N/O IR 536 (METCALF)	C	II	690	.	.	810	.
11 WINTHROP	36706	00341	IR 341(METCALF RD) SW/O IR 536 (BEARCE)	C	I	680	.	.	690	.
11 WINTHROP	01605	00343	HOLMES RD S/O NARROWS POND RD	C	III	.	.	.	1150	.
11 WINTHROP	01801	00343	HIGHLAND AVE N/O SR 11/100/US 202	C	I	2010	.	.	1930	.
11 WINTHROP	01805	00343	HIGHLAND AVE S/O SR 11/100/US 202	C	II+III	2440	.	.	2420	.
11 WINTHROP	00705	0041X	SR 41/133 S/O SR 41/133 @ BR# 5521	C	I	3110	.	.	2880	.
11 WINTHROP	01301	0041X	SR 41/133 N/O MAIN ST	C	I	7930	.	.	7700	.
11 WINTHROP	01901	0041X	SR 41/133 N/O SUMMER ST	C	I+II	.	.	.	8740	.
11 WINTHROP	42101	0041X	SR 41 N/O IR 2183 (STURTEVANT HILL RD)	C	I	2380	.	.	2280	.
11 WINTHROP	42207	00514	IR 514 (TURKEY LN) W/O IR 2551	C	I	560	.	.	640	.

2007 Maine Transportation Count Book

Kennebec

	TOWN	STATION	ROAD	LOCATION	TYPE	GROUP	AADT03	AADT04	AADT05	AADT06	AADT07
11	WINTHROP	00107	00516	MAIN ST W/O GREEN ST @ BR	C	I	9500	.	.	8640	.
11	WINTHROP	02302	00516	MAIN ST NE/O MORTON ST	C	I	8970	.	.	7620	.
11	WINTHROP	02903	00516	MAIN ST E/O GREENWOOD AVE	C	I	9050	.	.	8250	.
11	WINTHROP	02907	00516	MAIN ST W/O HIGHLAND AVE	C	I	9320	.	.	8550	.
11	WINTHROP	03702	00516	MAIN ST NE/O DEPOT ST	C	I	6160	.	.	6070	.
11	WINTHROP	03803	00516	MAIN ST E/O SQUIRE HILL PLAZA WEST ENT	C	I	7990	.	.	7420	.
11	WINTHROP	36103	00524	IR 524 (MARANACOOK RD) E/O SR 41	C	II+III	550	.	.	550	.
11	WINTHROP	36703	00536	IR 536 (METCALF RD) E/O IR 341(BEARCE)	C	II	630	.	.	710	.
11	WINTHROP	02201	00673	BOWDOIN ST N/O MAIN ST	C	II	3390	.	.	2930	.
11	WINTHROP	02501	00673	BOWDOIN ST N/O SUMMER ST	C	III	.	.	.	1850	.
11	WINTHROP	03103	00673	MEMORIAL DR E/O LEIGHTON DR	C	II+III	680	.	.	770	.
11	WINTHROP	03202	00673	MEMORIAL DR NE/O KNICKERBOCKER RD	C	II+III	1110	.	.	1060	.
11	WINTHROP	03206	00673	BOWDOIN ST SW/O GREEN ST @ BR	C	III	1830	.	.	1610	.
11	WINTHROP	37808	00673	IR 673 (MEMORIAL DR) NW/O IR 341(BEARCE)	C	II+III	500	.	.	520	.
11	WINTHROP	41905	00941	IR 941 (WELCHES PT RD) S/O SR 11/US 202	C	I	150	.	.	190	.
11	WINTHROP	01307	01112	HIGH ST W/O SR 41/133	C	I	780	.	.	750	.
11	WINTHROP	42107	0133X	SR 133 (WAYNE RD) W/O SR 41	C	I	5480	.	.	5280	.
11	WINTHROP	36601	0135X	SR 135 (STANLEY RD) N/O IR 536 (METCALF)	C	I	1530	.	.	1250	.
11	WINTHROP	40705	0135X	SR 135 S/O SR 11/100/US 202 (E JCT)	C	II+III	1470	.	.	1440	.
11	WINTHROP	41801	0135X	SR 135 N/O SR 11/100/US 202 (W JCT)	C	I	1740	.	.	1610	.
11	WINTHROP	51305	0135X	SR 135 (WINTHROP CENTER RD) S/O IR 2094	C	III	820	.	.	900	.
11	WINTHROP	42001	02005	IR 2005 (CARLETON POND RD) N/O IR 1562	C	I	340	.	.	390	.
11	WINTHROP	41702	02007	IR 2007 (CASE) NE/O IR 2566(OLD VILLAGE)	C	I	380	.	.	270	.
11	WINTHROP	42608	02085	IR 2085(N WAYNE) NW/O IR969(NEW SANDWICH	C	I	630	.	.	570	.
11	WINTHROP	01603	02094	NARROWS POND RD E/O HOLMES RD	C	II	1000	.	.	1060	.
11	WINTHROP	51307	02094	IR 2094 (NARROWS POND RD) W/O SR 135	C	II	480	.	.	530	.
11	WINTHROP	44908	02132	IR 2132 (CROSS RD) NW/O SR 11/100/US 202	C	I	490	.	.	520	.
11	WINTHROP	42108	02183	IR 2183 (STURTEVANT HILL RD) NW/O SR 41	C	I	1040	.	.	1010	.
11	WINTHROP	00508	02551	OLD LEWISTON RD NW/O SR 11/100/US 202	C	I	1560	.	1510	1370	.
11	WINTHROP	51405	02560	IR 2560 (SOUTH RD) S/O SR 11/100/US 202	C	III	1050	.	.	820	.
11	WINTHROP	41606	02566	IR 2566 (TURTLE RUN) SW/O IR 939(ISLAND)	C	I	190	.	.	130	.
11	WINTHROP	41904	02566	IR2566(TURTLE RUN) SE/O SR11/US202(M JCT	C	I	120	.	.	130	.
11	WINTHROP	41908	02566	IR2566(TURTLE RUN) NW/O SR11/US202(M JCT	C	I	280	.	.	260	.
11	WINTHROP	51402	02566	IR 2566 (OLD VILLAGE) NE/O SR 11/US 202	C	I	240	.	.	180	.

2007 Maine Transportation Count Book

Kennebec

	TOWN	STATION	ROAD	LOCATION	TYPE	GROUP	AADT03	AADT04	AADT05	AADT06	AADT07
11	WINTHROP	03203	02568	KNICKERBOCKER RD E/O MEMORIAL DR	C	III	790	.	.	640	.
11	WINTHROP	03205	02569	GREEN ST (OW) S/O BOWDOIN ST	C	III	430	.	.	300	.
11	WINTHROP	01903	02570	SUMMER ST E/O SR 41/133	C	II	2610	.	.	2560	.
11	WINTHROP	02105	02641	ROYAL ST S/O MAIN ST	C	I	1000	.	.	900	.
11	WINTHROP	02901	02653	GREENWOOD AVE N/O MAIN ST	C	III	1080	.	.	1070	.
11	WINTHROP	03802	02665	PECK FARM RD NE/O MAIN ST	C	I	.	.	.	820	.
11	WINTHROP	00706	A1414	SR 41/133 SW/O WESTERN AVE	C	I	2820	.	.	2820	.