

Traffic Volume Counts 2007 Annual Report



MaineDOT

**Data collected and published by the
State of Maine**

**Department of Transportation
Traffic Engineering Division**

**In cooperation with the
United States Department of Transportation
Federal Highway Administration**

TABLE of CONTENTS

Forward

Continuous Count Program

24 Hour Traffic Data Collection Program

Description of Headings, Symbols, and Abbreviations

Map of State Count Zones

Graph of 2007 Weekly Group Mean Factors

List of 2007 Weekly Group Mean Factors

List of 2007 Weekly Group Mean Factors as a Percent of AADT

Traffic Volume Counts by County, Town, and Route

FOREWORD

The Department of Transportation, Traffic Engineering Division, and Traffic Monitoring Section is responsible for the collection of all types of traffic data and maintenance of a statewide traffic volume database. The reduction and reporting of traffic volumes and vehicle classification data are accomplished through two types of count programs. They are as follows:

CONTINUOUS COUNT PROGRAM

Traffic volumes are monitored on a continuous year round basis at 64 permanent recorder sites located on major highways throughout the State. These hourly counts are collected to produce an average weekday figure, a weekly average day, a monthly average day, and a monthly average weekday. This information is compiled to develop an Annual Average Daily Traffic (AADT) figure for each location. The AADT is computed from the average of the weekly average day totals for the year.

The increasing demand to determine the types of vehicles (e.g. passenger cars, single-unit trucks, and semi's) traveling Maine's highways has prompted the development of a Continuous Classification Program. Currently, the department has 23 locations along routed highways that collect data based on thirteen categories as defined by the Federal Highway Administration. An AADT is computed based on the total volume.

24 HOUR TRAFFIC DATA COLLECTION PROGRAM

Between April 1st and November 15th of each year, 24 hour traffic counts (i.e., coverage counts) are gathered to monitor traffic flow and changes in traffic patterns. These counts are generally taken at intersections with major routes and/or other significant roads, Compact Urban Lines (CUL), or Town Lines (TL), or in coordination with ongoing projects or special traffic studies for the Department.

Additionally, 24-hour vehicle classification counts are performed in conjunction with the coverage counts to provide a comprehensive view of traffic along the routed highways.

The State is divided into three count zones:

ZONE I : Southwestern Maine to western Penobscot Bay region. This zone includes all of York, Cumberland, Sagadahoc, Lincoln, Knox, and Waldo counties, Oxford county from Albany Twp/Waterboro West & Oxford, Otisfield, as well as Poland, and Mechanic Falls in Androscoggin county.

ZONE II : Western/Central Maine and eastern Penobscot Bay region. This zone includes all of Androscoggin except Poland, and Mechanic Falls, Franklin, Kennebec counties, the remainder of Oxford county, Somerset county from Bingham south plus between Flagstaff Lake area and Kennebec River, southern Penobscot county, and western Hancock county.

ZONE III : Northern and eastern Maine. This zone includes all of Aroostook, Piscataquis, Washington counties, northern and southeastern Hancock county, Penobscot county from Lagrange north, and the remainder of Somerset county.

These zones are counted on a five year cycle: Zones I and II are counted twice and Zone III once during each five year period. The coverage count program also consists of the “Special Counts” taken each year to satisfy Departmental needs, local requests, and Federal requirements. These include the annual collection of data for the State’s four urbanized areas (BACTS, KACTS, ATRC, and PACTS), Interstate System counts, and data collected from the various traffic studies conducted throughout the year. The 2007 Program included 3884 counts accomplished.

Once the AADT’s have been computed for all of the permanent recorder locations, weekly factors for each station are computed by dividing the AADT by each average weekly figure. Those stations which exhibit similar traffic patterns are assembled and placed into one of three groups:

URBAN : Roadways which carry commuter traffic and exhibit little seasonal change in traffic volumes.

ARTERIAL : Roadways which carry commuter traffic but exhibit moderate seasonal changes in traffic volumes.

RECREATIONAL : Roadways which are heavily influenced by seasonal traffic.

Within each of the three groups, a factor for each week is computed by averaging the weekly factors from each station within the group.

The 2007 Weekly Group Mean Factors were developed by averaging the Weekly Group Mean Factor for 2004, 2005 and 2006. The following pages show the graph of the 2007 Weekly Group Mean Factors, a list of these factors, and the 2007 Weekly Group Mean Factor as a percent of the AADT.

The 24-hour raw data may now be grouped and assigned a factor to produce an AADT. Growth factors for expanding traffic in uncounted zones are developed utilizing data from the permanent recorders and comparing it to the data from the previous year.

The updated AADT’s are entered into the Maine Department of Transportation’s database to be used by various Departmental employees.

DESCRIPTION of HEADINGS, SYMBOLS, AND ABBREVIATIONS

The following is a description of the column headings, symbols, and abbreviations used for the Coverage Count Section.

TOWN The town in which a count was taken

ROUTE The road or highway on which the count was taken.

Non-Interstate Highways and Roads

---- X indicates a Routed Highway

0196X = SR 196 0001X = US Route 1

---- A or --- B indicates an Alternate Routed Highway

0001A = US Route 1A 0009B = SR 9B

---- C indicates a Business Route

0001C = Business US Route 1, 1A, or 1B

0025C = Business SR 25

Just a number with no letter OR no numbers or letters indicates a non-routed highway

= Pine Hill Road 00001 = Hubbard Road

01414 = IR 1414 00991 = IR 991 (Biddeford Road)

Interstate System

---- X indicates Northbound or Eastbound

0095X = I-95 Northbound

0395X = I-395 Eastbound

---- S indicates Southbound

0095S = I-95 Southbound

---- W indicates Westbound

0395W = I-395 Westbound

LOCATION A description of where the count was taken.

APP = Approach	ART = Arterial	AVE = Avenue	BK = Brook	BLVD = Boulevard
BR = Bridge	CIR = Circle	CL = County Line	CNR = Corner	CONN = Connector
CTR = Center	CUL = Compact Urban Line	CWY = Cause way	CV = Cove	DR = Drive
EB = Eastbound	ENT = Entrance	FL = Fall	FLS = Falls	FT = Fort
HTS = Heights	HWY = Highway	INT'L = International	ILD=Island	IR = Inventory Road
LG = Long	LK = Lake	LN = Lane	LWR = Lower	LTL = Little
MT = Mount	MTN = Mountain	NB = Northbound	NH = New Hampshire	OW = One Way
PD = Pond	PK = Park	PKWY = Park Way	PL = Place	PT = Point
PZ = Plaza	RD = Road	RDG = Ridge	RMP = Ramp	RR = Railroad
RV = River	SB = Southbound	SL = State Line	SQ = Square	SR = State Route
ST = Street	STA = Station	STR = Stream	TER = Terrace	TL = Town Line
TPK = Turnpike	TR = Trail	UPR = Upper	US = United States Route	WB = Westbound

N/O, NE/O, E/O, etc. = North of, Northeast of, East of, etc.

TYPE **Category for each count taken.**

- A Permanent Recorder Count**
- B BACTS Count**
- C Coverage Count**
- I Interstate Count**
- K KACTS Count**
- L ATRC Count (Formerly LACTS)**
- M Municipal, Town, Regional Count**
- P PACTS Count**
- S Special Count**
- T Turning Movement Count**
- W Weigh and Motion**
- Z Speed Count**

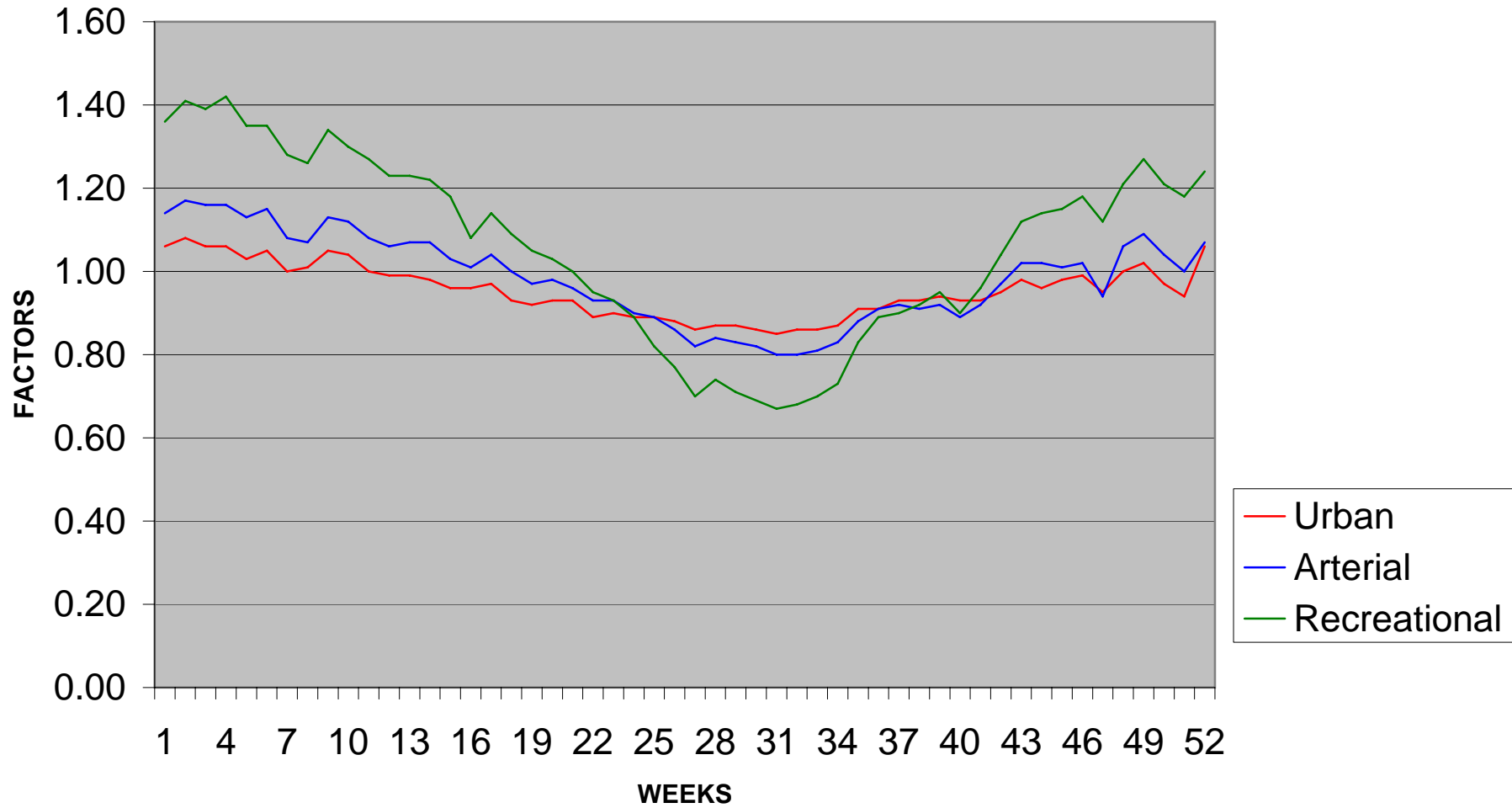
GROUP The factor group assigned to the location.

- I Urban Group II Arterial Group**
- III Recreational Group ATR Permanent Recorder Controlled Group**

AADT Annual Average Daily Traffic

2007 WEEKLY GROUP FACTORS

AVERAGE: 2004, 2005, 2006



2007
WEEKLY GROUP MEAN FACTORS
AVERAGE: 2004, 2005, 2006

Month	Start Date	Dates	Month Week #	Urban Group I	Arterial Group II	Recreational Group III	Group I + II	Group II + III	Group I + III	Year Week #
Jan/Feb	(31)	1,2,3,4,5	1	1.06	1.14	1.36	1.10	1.25	1.21	1
	(7)	8,9,10,11,1	2	1.08	1.17	1.41	1.13	1.29	1.25	2
	(14)	15,16,17,1	3	1.06	1.16	1.39	1.11	1.28	1.23	3
	(21)	22,23,24,2	4	1.06	1.16	1.42	1.11	1.29	1.24	4
	(28)	29,30,31,1	5	1.03	1.13	1.35	1.08	1.24	1.19	5
Feb/Mar	(4)	5,6,7,8,9	1	1.05	1.15	1.35	1.10	1.25	1.20	6
	(11)	12,13,14,1	2	1.00	1.08	1.28	1.04	1.18	1.14	7
	(18)	19,20,21,2	3	1.01	1.07	1.26	1.04	1.17	1.14	8
	(25)	26,27,28,2	4	1.05	1.13	1.34	1.09	1.24	1.20	9
March	(4)	5,6,7,8,9	1	1.04	1.12	1.30	1.08	1.21	1.17	10
	(11)	12,13,14,1	2	1.00	1.08	1.27	1.04	1.18	1.14	11
	(18)	19,20,21,2	3	0.99	1.06	1.23	1.03	1.15	1.11	12
	(25)	26,27,28,2	4	0.99	1.07	1.23	1.03	1.15	1.11	13
April/May	(1)	2,3,4,5,6	1	0.98	1.07	1.22	1.03	1.15	1.10	14
	(8)	9,10,11,12	2	0.96	1.03	1.18	1.00	1.11	1.07	15
	(15)	16,17,18,1	3	0.96	1.01	1.08	0.99	1.05	1.02	16
	(22)	23,24,25,2	4	0.97	1.04	1.14	1.01	1.09	1.06	17
	(29)	30,1,2,3,4	1	0.93	1.00	1.09	0.97	1.05	1.01	18
May/June	(6)	7,8,9,10,1	2	0.92	0.97	1.05	0.95	1.01	0.99	19
	(13)	14,15,16,1	3	0.93	0.98	1.03	0.96	1.01	0.98	20
	(20)	21,22,23,2	4	0.93	0.96	1.00	0.95	0.98	0.97	21
	(27)	28,29,30,3	5	0.89	0.93	0.95	0.91	0.94	0.92	22
June/July	(3)	4,5,6,7,8	1	0.90	0.93	0.93	0.92	0.93	0.92	23

	(10)	11,12,13,1	2	0.89	0.90	0.89	0.90	0.90	0.89	24
	(17)	18,19,20,2	3	0.89	0.89	0.82	0.89	0.86	0.86	25
	(24)	25,26,27,2	4	0.88	0.86	0.77	0.87	0.82	0.83	26
Jul/Aug	(1)	2,3,4,5,6	1	0.86	0.82	0.70	0.84	0.76	0.78	27
	(8)	9,10,11,12	2	0.87	0.84	0.74	0.86	0.79	0.81	28
	(15)	16,17,18,1	3	0.87	0.83	0.71	0.85	0.77	0.79	29
	(22)	23,24,25,2	4	0.86	0.82	0.69	0.84	0.76	0.78	30
	(29)	30,31,1,2,3	5	0.85	0.80	0.67	0.83	0.74	0.76	31
Aug/Sep	(5)	6,7,8,9,10	1	0.86	0.80	0.68	0.83	0.74	0.77	32
	(12)	13,14,15,1	2	0.86	0.81	0.70	0.84	0.76	0.78	33
	(19)	20,21,22,2	3	0.87	0.83	0.73	0.85	0.78	0.80	34
	(26)	27,28,29,3	4	0.91	0.88	0.83	0.90	0.86	0.87	35
September	(2)	3,4,5,6,7	1	0.91	0.91	0.89	0.91	0.90	0.90	36
	(9)	10,11,12,1	2	0.93	0.92	0.90	0.93	0.91	0.92	37
	(16)	17,18,19,2	3	0.93	0.91	0.92	0.92	0.92	0.93	38
	(23)	24,25,26,2	4	0.94	0.92	0.95	0.93	0.94	0.95	39
	(30)	1,2,3,4,5	1	0.93	0.89	0.90	0.91	0.90	0.92	40
Oct/Nov	(7)	8,9,10,11,1	2	0.93	0.92	0.96	0.93	0.94	0.95	41
	(14)	15,16,17,1	3	0.95	0.97	1.04	0.96	1.01	1.00	42
	(21)	22,23,24,2	4	0.98	1.02	1.12	1.00	1.07	1.05	43
	(28)	29,30,31,1	5	0.96	1.02	1.14	0.99	1.08	1.05	44
Nov/Dec	(4)	5,6,7,8,9	1	0.98	1.01	1.15	1.00	1.08	1.07	45
	(11)	12,13,14,1	2	0.99	1.02	1.18	1.01	1.10	1.09	46
	(18)	19,20,21,2	3	0.95	0.94	1.12	0.95	1.03	1.04	47
	(25)	26,27,28,2	4	1.00	1.06	1.21	1.03	1.14	1.11	48
December	(2)	3,4,5,6,7	1	1.02	1.09	1.27	1.06	1.18	1.15	49
	(9)	10,11,12,1	2	0.97	1.04	1.21	1.01	1.13	1.09	50
	(16)	17,18,19,2	3	0.94	1.00	1.18	0.97	1.09	1.06	51
	(23)	24,25,26,2	4	1.06	1.07	1.24	1.07	1.16	1.15	52

2007
WEEKLY GROUP MEAN FACTORS
AVERAGE: 2004, 2005, 2006
AS PERCENT OF AADT

Month	Start Date	Dates	Month Week #	Urban Group I	Arterial Group II	Recreational Group III	Group I + II	Group II + III	Group I + III	Year Week #
Jan/Feb	(31)	1,2,3,4,5	1	94.34	87.72	73.53	90.91	80.00	82.64	1
	(7)	8,9,10,11,1	2	92.59	85.47	70.92	88.50	77.52	80.00	2
	(14)	15,16,17,1	3	94.34	86.21	71.94	90.09	78.13	81.30	3
	(21)	22,23,24,2	4	94.34	86.21	70.42	90.09	77.52	80.65	4
	(28)	29,30,31,1	5	97.09	88.50	74.07	92.59	80.65	84.03	5
Feb/Mar	(4)	5,6,7,8,9	1	95.24	86.96	74.07	90.91	80.00	83.33	6
	(11)	12,13,14,1	2	100.00	92.59	78.13	96.15	84.75	87.72	7
	(18)	19,20,21,2	3	99.01	93.46	79.37	96.15	85.47	87.72	8
	(25)	26,27,28,2	4	95.24	88.50	74.63	91.74	80.65	83.33	9
March	(4)	5,6,7,8,9	1	96.15	89.29	76.92	92.59	82.64	85.47	10
	(11)	12,13,14,1	2	100.00	92.59	78.74	96.15	84.75	87.72	11
	(18)	19,20,21,2	3	101.01	94.34	81.30	97.09	86.96	90.09	12
	(25)	26,27,28,2	4	101.01	93.46	81.30	97.09	86.96	90.09	13
April/May	(1)	2,3,4,5,6	1	102.04	93.46	81.97	97.09	86.96	90.91	14
	(8)	9,10,11,12	2	104.17	97.09	84.75	100.00	90.09	93.46	15
	(15)	16,17,18,1	3	104.17	99.01	92.59	101.01	95.24	98.04	16
	(22)	23,24,25,2	4	103.09	96.15	87.72	99.01	91.74	94.34	17
	(29)	30,1,2,3,4	5	107.53	100.00	91.74	103.09	95.24	99.01	18
May/June	(6)	7,8,9,10,1	1	108.70	103.09	95.24	105.26	99.01	101.01	19
	(13)	14,15,16,1	2	107.53	102.04	97.09	104.17	99.01	102.04	20
	(20)	21,22,23,2	3	107.53	104.17	100.00	105.26	102.04	103.09	21
	(27)	28,29,30,3	4	112.36	107.53	105.26	109.89	106.38	108.70	22
June/July	(3)	4,5,6,7,8	1	111.11	107.53	107.53	108.70	107.53	108.70	23

	(10)	11,12,13,1	2	112.36	111.11	112.36	111.11	111.11	112.36	24
	(17)	18,19,20,2	3	112.36	112.36	121.95	112.36	116.28	116.28	25
	(24)	25,26,27,2	4	113.64	116.28	129.87	114.94	121.95	120.48	26
Jul/Aug	(1)	2,3,4,5,6	1	116.28	121.95	142.86	119.05	131.58	128.21	27
	(8)	9,10,11,12	2	114.94	119.05	135.14	116.28	126.58	123.46	28
	(15)	16,17,18,1	3	114.94	120.48	140.85	117.65	129.87	126.58	29
	(22)	23,24,25,2	4	116.28	121.95	144.93	119.05	131.58	128.21	30
	(29)	30,31,1,2,3	5	117.65	125.00	149.25	120.48	135.14	131.58	31
Aug/Sep	(5)	6,7,8,9,10	1	116.28	125.00	147.06	120.48	135.14	129.87	32
	(12)	13,14,15,1	2	116.28	123.46	142.86	119.05	131.58	128.21	33
	(19)	20,21,22,2	3	114.94	120.48	136.99	117.65	128.21	125.00	34
	(26)	27,28,29,3	4	109.89	113.64	120.48	111.11	116.28	114.94	35
September	(2)	3,4,5,6,7	1	109.89	109.89	112.36	109.89	111.11	111.11	36
	(9)	10,11,12,1	2	107.53	108.70	111.11	107.53	109.89	108.70	37
	(16)	17,18,19,2	3	107.53	109.89	108.70	108.70	108.70	107.53	38
	(23)	24,25,26,2	4	106.38	108.70	105.26	107.53	106.38	105.26	39
	(30)	1,2,3,4,5	1	107.53	112.36	111.11	109.89	111.11	108.70	40
Oct/Nov	(7)	8,9,10,11,1	2	107.53	108.70	104.17	107.53	106.38	105.26	41
	(14)	15,16,17,1	3	105.26	103.09	96.15	104.17	99.01	100.00	42
	(21)	22,23,24,2	4	102.04	98.04	89.29	100.00	93.46	95.24	43
	(28)	29,30,31,1	5	104.17	98.04	87.72	101.01	92.59	95.24	44
Nov/Dec	(4)	5,6,7,8,9	1	102.04	99.01	86.96	100.00	92.59	93.46	45
	(11)	12,13,14,1	2	101.01	98.04	84.75	99.01	90.91	91.74	46
	(18)	19,20,21,2	3	105.26	106.38	89.29	105.26	97.09	96.15	47
	(25)	26,27,28,2	4	100.00	94.34	82.64	97.09	87.72	90.09	48
December	(2)	3,4,5,6,7	1	98.04	91.74	78.74	94.34	84.75	86.96	49
	(9)	10,11,12,1	2	103.09	96.15	82.64	99.01	88.50	91.74	50
	(16)	17,18,19,2	3	106.38	100.00	84.75	103.09	91.74	94.34	51
	(23)	24,25,26,2	4	94.34	93.46	80.65	93.46	86.21	86.96	52

2007 Maine Transportation Count Book

County

Lincoln

TOWN	STATION	ROAD	LOCATION	TYPE	GROUP	AADT03	AADT04	AADT05	AADT06	AADT07
15 ALNA	42101	00368	IR 368 (CROSS RD) N/O IR 1915(SHEEPSCOT)	C	II	.	.	470	.	530
15 ALNA	42307	00368	IR 368 (CROSS RD) W/O SR 218	C	I	310
15 ALNA	53604	00581	IR 581 (GOLDEN RIDGE RD) SE/O SR 218	C	I	.	.	40	.	.
15 ALNA	44206	01912	IR 1912 (RABBIT PATH RD) SW/O SR 218	C	I	.	.	140	.	110
15 ALNA	42004	01915	IR 1915 SE/O IR 1916 @ NEWCASTLE TL	C	II	.	.	1060	.	.
15 ALNA	44404	0194X	SR 194 SE/O IR 572	C	II	.	.	780	.	630
15 ALNA	44408	0194X	SR 194 NW/O IR 572	C	II	.	.	310	.	.
15 ALNA	44504	0194X	SR 194 SE/O IR 378	C	II	.	.	860	.	770
15 ALNA	30405	0218X	SR 218 S/O IR 378 (DOCK RD)	C	II	.	.	1420	.	1530
15 ALNA	42206	0218X	SR 218 SW/O IR 1915 (SHEEPSCOT RD)	C	II	.	.	1890	.	1870
15 ALNA	42301	0218X	SR 218 N/O IR 368 (CROSS RD)	C	II	.	.	1450	.	1520
15 ALNA	44100	0218X	SR 218 @ WHITEFIELD TL	C	II	.	.	1560	.	1600
15 ALNA	44308	0218X	SR 218 NW/O IR 367 (W ALNA RD)	C	II	.	.	1410	.	1430
15 BOOTHBAY	41601	0027X	SR 27 N/O IR 417 (RIVER RD)	A	ATR41601	6720	6720	6650	6780	6890
15 BOOTHBAY	41301	0027X	SR 27 N/O IR 406 (COUNTRY CLUB RD)	C	ATR41601	9550
15 BOOTHBAY	41605	0027X	SR 27 S/O IR 417 (RIVER RD)	C	ATR41601	.	.	8390	.	8310
15 BOOTHBAY	51202	0027X	SR 27 NE/O IR 705 (COMMON DR)(OW)(N JCT)	C	ATR41601	.	.	11420	.	11030
15 BOOTHBAY	51305	0027X	SR 27 S/O IR 705 (COMMON DR)(OW) (S JCT)	T	ATR41601	.	.	10310	.	.
15 BOOTHBAY	41206	00398	IR 398(COREY LN) SW/O IR 407(BACK RV RD)	C	ATR41601	.	.	5780	.	5070
15 BOOTHBAY	41503	00398	IR 398 (BARTER ISLE) E/O IR 777(SAWYERS)	C	ATR41601	.	.	1530	.	1540
15 BOOTHBAY	41507	00398	IR 398 (BARTER ISLE) W/O IR 777(SAWYERS)	C	ATR41601	.	.	1260	.	1120
15 BOOTHBAY	51207	00398	IR 398 (COREY LN) W/O SR 27	C	ATR41601	.	.	3280	.	3140
15 BOOTHBAY	44001	00402	IR 402 (DOVER RD) N/O IR 429 (ADAMS PD)	C	ATR41601	.	.	420	.	480
15 BOOTHBAY	41204	00407	IR 407(BACK RV RD) SE/O IR 398(COREY LN)	C	ATR41601	.	.	2660	.	2590
15 BOOTHBAY	41208	00407	IR 407(BACK RV RD) NW/O IR 398(COREY LN)	C	ATR41601	.	.	1070	.	1080
15 BOOTHBAY	41603	00417	IR 417 (RIVER RD) E/O SR 27	A	ATR41603	1440	1470	1350	1370	.
15 BOOTHBAY	41901	00417	IR 417(RIVER) N/O IR1376(MERRIWEATHER@TL	C	ATR41603	.	.	1340	.	1170
15 BOOTHBAY	50701	00420	IR 420 (PENSION RDG) N/O IR 427(BRYER RD	C	ATR41601	.	.	700	.	650
15 BOOTHBAY	50706	00420	IR 420(BUTLER) SW/O IR 427(PENSION RDG)	C	ATR41601	.	.	500	.	470
15 BOOTHBAY	50703	00427	IR 427 (PENSION RDG) E/O IR 420(BUTLER)	C	ATR41601	.	.	730	.	760
15 BOOTHBAY	39701	00450	IR 450 (SHORE RD) N/O IR 808 (MIDDLE)	C	ATR41601	.	.	430	.	420
15 BOOTHBAY	39907	00450	IR 450 (VAN HORN RD) W/O SR 96(OCEAN PT)	C	ATR41601	.	.	420	.	390
15 BOOTHBAY	51303	00705	IR 705 (COMMON DR)(OW) E/O SR 27 (S JCT)	T	ATR41601	.	.	120	.	.
15 BOOTHBAY	53405	00707	IR 707(LAKESIDE) S/O IR 1586(OLD TREVET)	C	ATR41601	.	.	2810	.	.

2007 Maine Transportation Count Book

County

Lincoln

	TOWN	STATION	ROAD	LOCATION	TYPE	GROUP	AADT03	AADT04	AADT05	AADT06	AADT07
15	BOOTHBAY	41505	00777	IR 777 (SAWYERS ISLAND RD) S/O IR 398	C	ATR41601	.	.	580	.	540
15	BOOTHBAY	39607	00808	IR 808 (MIDDLE RD) W/O SR 96 (OCEAN PT)	C	ATR41601	.	.	260	.	290
15	BOOTHBAY	39601	0096X	SR 96 (OCEAN PT RD) N/O IR 808 (MIDDLE)	C	ATR41601	.	.	750	.	820
15	BOOTHBAY	39901	0096X	SR 96(OCEAN PT RD) N/O IR 456(ROYALL RD)	C	ATR41601	.	.	1300	.	1330
15	BOOTHBAY	49101	0096X	SR 96(OCEAN PT) N/O IR1061(FARNHAM PT(PW	C	ATR41601	.	.	2260	.	2400
15	BOOTHBAY HARBOR	00108	0027X	SR 27 (CENTER RD) NW/O EASTERN AVE	C	ATR41601	.	.	10960	.	9670
15	BOOTHBAY HARBOR	00305	0027X	SR 27 (TOWNSEND AVE) S/O EASTERN AVE	C	ATR41601	.	.	6690	.	6030
15	BOOTHBAY HARBOR	00402	0027X	SR 27 (TOWNSEND AVE)(OW) NE/O UNION ST	C	ATR41601	4020
15	BOOTHBAY HARBOR	02701	0027X	SR 27 N/O SR 96 (OCEAN PT RD)	C	ATR41601	.	.	11560	.	11410
15	BOOTHBAY HARBOR	03002	0027X	SR 27 (TOWNSEND AVE) NE/O SR27 (OAK ST)	C	ATR41601	.	.	5640	.	4220
15	BOOTHBAY HARBOR	03006	0027X	SR 27 (MCKOWN ST) SW/O SR 27 (OAK ST)	C	ATR41601	.	.	5210	.	5600
15	BOOTHBAY HARBOR	03603	0027X	SR 27 (WEST ST) E/O MIDDLE RD	C	ATR41601	.	.	4360	.	4350
15	BOOTHBAY HARBOR	04402	0027X	SR 27 (WEST ST) NE/O LAKESIDE DR @ BR	C	ATR41601	.	.	3220	.	2820
15	BOOTHBAY HARBOR	40900	0027X	SR 27 @ SOUTHPORT TL @ BR# 2789	C	ATR41601	3160
15	BOOTHBAY HARBOR	04208	00411	WILLIAM ST NW/O SR 27 (WEST ST)	C	ATR41601	.	.	260	.	300
15	BOOTHBAY HARBOR	01805	00413	ATLANTIC AVE S/O SUNSET RD	C	ATR41601	.	.	910	.	940
15	BOOTHBAY HARBOR	01902	00413	ATLANTIC AVE NE/O ROADS END RD	C	ATR41601	.	.	1480	.	1380
15	BOOTHBAY HARBOR	40302	00425	IR 425 (BACK NARROWS) NE/O IR 420(BEATH)	C	ATR41601	.	.	1120	.	1180
15	BOOTHBAY HARBOR	04401	00707	LAKESIDE DR N/O SR 27 (WEST ST)	C	ATR41601	.	.	1820	.	1700
15	BOOTHBAY HARBOR	04405	00707	MCKOWN PT RD S/O SR 27 (WEST ST)	C	ATR41601	.	.	1150	.	1090
15	BOOTHBAY HARBOR	04602	00707	MCKOWN PT RD NE/O POOLER RD(PW)	C	ATR41601	.	.	650	.	680
15	BOOTHBAY HARBOR	40201	00780	IR 780 (BRADLEY RD) N/O SR 96(OCEAN PT)	C	ATR41601	490
15	BOOTHBAY HARBOR	01803	00789	SUNSET RD E/O ATLANTIC AVE	C	ATR41601	.	.	230	.	210
15	BOOTHBAY HARBOR	00901	00858	LOBSTER COVE RD N/O PARK ST	C	ATR41601	.	.	520	.	520
15	BOOTHBAY HARBOR	02402	0096X	SR 96 (OCEAN PT RD) NE/O EASTERN AVE	C	ATR41601	.	.	5040	.	4930
15	BOOTHBAY HARBOR	02603	0096X	SR 96(OCEAN PT RD) E/O SR 27 (CENTER RD)	C	ATR41601	.	.	4800	.	4540
15	BOOTHBAY HARBOR	40203	0096X	SR 96 E/O IR 423 (BAYVILLE) @BOOTHBAY TL	C	ATR41601	.	.	3950	.	4040
15	BOOTHBAY HARBOR	00306	01017	SR 27 (OAK ST)(OW) SW/O SR 27(CENTER RD)	C	ATR41601	.	.	4400	.	4060
15	BOOTHBAY HARBOR	02806	01017	SR 27 (OAK ST)(OW) SW/O MCCLINTOCK ST	C	ATR41601	3490
15	BOOTHBAY HARBOR	02906	01017	SR 27 (OAK ST)(OW) SW/O WEST ST	C	ATR41601	.	.	4560	.	.
15	BOOTHBAY HARBOR	00608	01019	UNION ST NW/O ATLANTIC AVE	C	ATR41601	.	.	4560	.	4060
15	BOOTHBAY HARBOR	02804	01022	MCCLINTOCK ST SE/O SR 27 (OAK ST)	C	ATR41601	1010
15	BOOTHBAY HARBOR	03502	01029	WEST ST NE/O SR 27 (BOOTHBAY HOUSE HILL)	C	ATR41601	.	.	2050	.	1840
15	BOOTHBAY HARBOR	03601	01033	MIDDLE RD N/O SR 27 (WEST ST)	C	ATR41601	.	.	590	.	570

2007 Maine Transportation Count Book

County

Lincoln

TOWN	STATION	ROAD	LOCATION	TYPE	GROUP	AADT03	AADT04	AADT05	AADT06	AADT07	
15	BOOTHBAY HARBOR	04101	01036	LAKEVIEW RD N/O SR 27 (WEST ST)	C	ATR41601	.	.	500	.	400
15	BOOTHBAY HARBOR	00907	01045	PARK ST W/O LOBSTER COVE RD	C	ATR41601	.	.	370	.	310
15	BOOTHBAY HARBOR	00702	01501	KENNY FIELD RD NE/O PARK ST	C	ATR41601	.	.	850	.	880
15	BOOTHBAY HARBOR	00202	01585	EASTERN AVE NE/O SR 27 (CENTER RD)	C	ATR41601	.	.	1030	.	1020
15	BOOTHBAY HARBOR	02405	01585	EASTERN AVE S/O SR 96 (OCEAN PT RD)	C	ATR41601	.	.	1540	.	1600
15	BREMEN	35501	0032X	SR 32 N/O IR 516(HARRIMAN) @WALDOBORO TL	C	III	.	.	950	.	960
15	BREMEN	36806	0032X	SR 32 SW/O IR 500 (BISCAY RD)	C	III	.	.	960	.	1200
15	BREMEN	36902	0032X	SR 32 (WALDOBORO RD) NE/O IR 499 (SHORE)	C	III	.	.	950	.	1100
15	BREMEN	37005	0032X	SR 32 S/O IR 627(MUSCONGUS) @ BRISTOL TL	C	III	.	.	840	.	1120
15	BREMEN	40006	00489	IR 489(FOGLER RD) SW/O IR 500(BISCAY RD)	C	III	.	.	250	.	370
15	BREMEN	35707	00494	IR 494 (TURNER RD) W/O SR 32	C	III	.	.	420	.	290
15	BREMEN	35803	00494	IR 494 (TURNER RD) E/O IR 500(BISCAY RD)	C	III	.	.	530	.	370
15	BREMEN	48404	00498	IR 498 (HEATH RD) SE/O SR 32 @ BR# 0621	C	III	.	.	80	.	110
15	BREMEN	36905	00499	IR 499(SHORE RD) S/O SR 32(WALDOBORO RD)	C	III	.	.	140	.	130
15	BREMEN	35801	00500	IR 500 (BISCAY RD) N/O IR 494 @TL@BR3049	C	III	.	.	1650	.	1870
15	BREMEN	35805	00500	IR 500 (BISCAY RD) S/O IR 494(TURNER RD)	C	III	.	.	1010	.	1410
15	BREMEN	36808	00500	IR 500 (BISCAY RD) NW/O SR 32	C	III	.	.	930	.	1020
15	BRISTOL	37101	0032X	SR 32 N/O IR 472 (UPR ROUND POND RD)	C	III	.	.	1410	.	1710
15	BRISTOL	37903	0032X	SR 32 E/O SR 130 (BRISTOL RD)	C	III	.	.	1680	.	1730
15	BRISTOL	51005	0032X	SR 32 S/O IR 656 (LONG COVE PT RD)	C	III	.	.	650	.	860
15	BRISTOL	38503	00463	IR 463 (HARRINGTON RD) E/O IR 462	C	III	.	.	1130	.	1150
15	BRISTOL	38508	00463	IR 463 (HARRINGTON RD) NW/O IR 462	C	III	.	.	800	.	810
15	BRISTOL	50906	00465	IR 465(CARL BAILEY) SW/O SR 130(BRISTOL)	C	III	.	.	210	.	240
15	BRISTOL	39204	00470	IR 470 (LWR ROUND POND RD) SE/O SR 130	C	III	.	.	950	.	950
15	BRISTOL	39103	00472	IR 472 (UPR ROUND POND RD) E/O SR 130@BR	C	III	.	.	490	.	600
15	BRISTOL	38006	00480	IR 480 (HUDDLE RD) SW/O SR 130	C	III	.	.	1030	.	1080
15	BRISTOL	37803	00481	IR 481(SOUTH SIDE RD) E/O SR130(BRISTOL)	C	III	.	.	810	.	1010
15	BRISTOL	37807	00481	IR 481 (SNOWBALL HILL RD) W/O SR 130	C	III	.	.	1110	.	1180
15	BRISTOL	51607	00481	IR 481(S SIDE RD) W/O IR477(LEEMAN HILL)	C	III	700
15	BRISTOL	38903	00493	IR 493 (BENNER RD) E/O SR 130 @ BR# 0619	C	III	.	.	430	.	370
15	BRISTOL	51004	00656	IR 656 (LONG COVE PT) SE/O SR 32@BR#0628	C	III	.	.	200	.	250
15	BRISTOL	51403	00803	IR 803 E/O SR 130 @ BR#0633	C	III	0
15	BRISTOL	51503	00804	IR 804(REDONNET MILL) E/O SR 130@BR#0632	C	III	20
15	BRISTOL	36501	0129X	SR 129 N/O SR 130 (BRISTOL RD)	C	III	.	.	6550	.	6740

2007 Maine Transportation Count Book

Lincoln

	TOWN	STATION	ROAD	LOCATION	TYPE	GROUP	AADT03	AADT04	AADT05	AADT06	AADT07
15	BRISTOL	36506	0129X	SR 129 SW/O SR 130 @ S BRISTOL TL	C	III	.	.	2380	.	2380
15	BRISTOL	36505	0130X	SR 130 (BRISTOL RD) S/O SR 129	C	III	.	.	4390	.	4750
15	BRISTOL	37805	0130X	SR 130 (BRISTOL) S/O IR 481(SOUTH SIDE)	C	III	.	.	1830	.	2090
15	BRISTOL	38208	0130X	SR 130 NW/O IR 473 (BOYD POND RD)@BR5314	C	III	.	.	3760	.	4050
15	BRISTOL	38301	0130X	SR 130 (BRISTOL) N/O IR 1980(FIR HOLLOW)	C	III	.	.	3250	.	3490
15	BRISTOL	38806	0130X	SR 130 (BRISTOL) SW/O IR 466(SPLIT ROCK)	C	III	.	.	3500	.	3720
15	DAMARISCOTTA	00100	0001B	US 1B (MAIN ST) @ NEWCASTLE TL @BR# 2215	C	III	.	.	12360	.	10560
15	DAMARISCOTTA	00304	0001B	US 1B (MAIN ST) SE/O WATER ST	C	III	.	.	12420	.	10770
15	DAMARISCOTTA	00404	0001B	US 1B (MAIN ST) SE/O VINE ST	C	II	.	.	9330	.	9100
15	DAMARISCOTTA	00702	0001B	US 1B (MAIN ST) NE/O SCHOOL ST	C	II	.	.	11960	.	12080
15	DAMARISCOTTA	36201	0001B	US 1B (MAIN ST) N/O IR 500 (BISCAY RD)	C	II	.	.	7310	.	8770
15	DAMARISCOTTA	36405	0001B	US 1B (MAIN ST) S/O US 1	C	II	.	.	4980	.	6060
15	DAMARISCOTTA	48906	0001B	US 1B(MAIN ST) SW/O IR 541(BELVEDERE RD)	C	II	.	.	6190	.	7480
15	DAMARISCOTTA	49200	0001X	US 1 @ NOBLEBORO TL	A	ATR49200	.	.	.	10450	10470
15	DAMARISCOTTA	36401	0001X	US 1 (NB) N/O US 1B (MAIN ST)	C	ATR49402	.	.	6310	.	6520
15	DAMARISCOTTA	36406	0001X	US 1 SW/O US 1B (MAIN ST)	C	II+III	.	.	7860	.	8430
15	DAMARISCOTTA	36411	0001X	US 1 (SB) N/O US 1B (MAIN ST)	C	ATR49402	.	.	6330	.	6400
15	DAMARISCOTTA	48706	0001X	US 1 SW/O IR 541 (BELVEDERE RD)	C	II+III	.	.	8520	.	9370
15	DAMARISCOTTA	45703	00495	IR 495 (EGYPT RD) E/O IR 500 (BISCAY RD)	C	III	.	.	780	.	770
15	DAMARISCOTTA	49003	00495	IR 495 (EGYPT RD) E/O IR 503 (KNOWLTON)	C	III	.	.	580	.	560
15	DAMARISCOTTA	00402	00500	CHURCH ST NE/O US 1B (MAIN ST)	C	I	.	.	1210	.	1110
15	DAMARISCOTTA	00503	00500	CHURCH ST E/O HODGDON ST (W JCT)	C	I	.	.	1700	.	1600
15	DAMARISCOTTA	36103	00500	IR 500 (BISCAY RD) E/O IR 503(STANDPIPE)	C	III	.	.	3120	.	3110
15	DAMARISCOTTA	36203	00500	IR 500 (BISCAY RD) E/O US 1B (MAIN ST)	C	III	.	.	4420	.	4310
15	DAMARISCOTTA	36207	00500	IR 500 (CHURCH ST) W/O US 1B (MAIN ST)	C	I	.	.	1480	.	1480
15	DAMARISCOTTA	48707	00541	IR 541 (BELVEDERE RD) W/O US 1	C	II	.	.	820	.	930
15	DAMARISCOTTA	48907	00541	IR 541 (BELVEDERE RD) W/O US 1B(MAIN ST)	C	II	.	.	1450	.	1670
15	DAMARISCOTTA	00606	00619	SCHOOL ST SW/O CHURCH ST	C	I	.	.	370	.	380
15	DAMARISCOTTA	00706	00619	SCHOOL ST SW/O US 1B (MAIN ST)	C	II	.	.	3790	.	4170
15	DAMARISCOTTA	01507	00667	CHAPMAN ST SW/O SCHOOL ST	C	I	.	.	470	.	310
15	DAMARISCOTTA	00502	00674	HODGDON ST (NB) NE/O CHURCH ST (W JCT)	C	I	.	.	160	.	190
15	DAMARISCOTTA	00507	00674	ELM ST W/O CHURCH ST	C	I	.	.	1500	.	1530
15	DAMARISCOTTA	45803	00678	IR 678(BACK MEADOW) E/O IR 1178(HAMMOND)	C	III	.	.	440	.	460
15	DAMARISCOTTA	00807	00680	CROSS ST W/O SR 129 (BRISTOL RD)	C	II	.	.	1640	.	1600

2007 Maine Transportation Count Book

Lincoln

	TOWN	STATION	ROAD	LOCATION	TYPE	GROUP	AADT03	AADT04	AADT05	AADT06	AADT07
15	DAMARISCOTTA	00305	00850	WATER ST S/O US 1B (MAIN ST)	C	II	.	.	1530	.	1690
15	DAMARISCOTTA	00405	0129X	SR 129 (BRISTOL RD) S/O US 1B (MAIN ST)	C	III	.	.	4210	.	6640
15	DAMARISCOTTA	00805	0129X	SR 129 (BRISTOL RD) S/O CROSS ST	C	III	.	.	6600	.	6120
15	DAMARISCOTTA	01101	0129X	SR 129 (BRISTOL RD) N/O SCHOOL ST	C	III	4930
15	DAMARISCOTTA	01206	0129X	SR 129 (BRISTOL RD) SW/O COTTAGE PT RD	C	III	.	.	6980	.	7330
15	DAMARISCOTTA	35901	01592	IR 1592 (CENTER ST) N/O IR 1636 @ TL	C	II	.	.	1690	.	1600
15	DAMARISCOTTA	00406	A1000	RAMP A TO SR 129 SW/O US 1B (MAIN ST)	C	I	.	.	2650	.	.
15	DRESDEN	43804	0027X	SR 27 (GARDINER) SE/O SR 127/197(MIDDLE)	C	II	4290
15	DRESDEN	43808	0027X	SR 27(GARDINER) NW/O SR 127/197@BR# 2882	C	II	3760
15	DRESDEN	43901	0027X	SR 27(GARDINER RD) N/O IR 336(ALEXANDER)	C	II	.	.	5050	.	4060
15	DRESDEN	43905	0027X	SR 27 (GARDINER) S/O SR 128(CEDAR GROVE)	C	II	.	.	4650	.	3560
15	DRESDEN	53204	0027X	SR 27(GARDINER RD) SE/O IR338(BLINN HILL	C	II	3310
15	DRESDEN	54000	0027X	SR 27(GARDINER RD) @ WISCASSET TL	C	II	.	.	4140	.	3160
15	DRESDEN	53202	00338	IR 338(BLINN HILL RD) NE/O SR 27@BR#0609	C	I	.	.	730	.	720
15	DRESDEN	48003	00356	IR 356 (INDIAN RD) E/O SR 128 (RIVER RD)	C	I	.	.	1120	.	1000
15	DRESDEN	43400	0127X	SR 127 (MIDDLE RD) @ WOOLWICH TL	C	II	.	.	2260	.	2050
15	DRESDEN	43701	0127X	SR 127/197 (MIDDLE) N/O SR 197(RICHMOND)	C	II	2240
15	DRESDEN	43705	0127X	SR 127(MIDDLE RD) S/O SR197(RICHMOND RD)	C	II	.	.	1700	.	1600
15	DRESDEN	43806	0127X	SR 127/197 (MIDDLE) SW/O SR 27(GARDINER)	C	II	.	.	2630	.	2370
15	DRESDEN	43505	0128X	SR 128(RIVER RD) S/O IR 1931@WOOLWICH TL	C	II	.	.	580	.	430
15	DRESDEN	43601	0128X	SR 128(CEDAR GROVE) N/O SR 197(RICHMOND)	C	II	.	.	1170	.	1050
15	DRESDEN	43605	0128X	SR 128(RIVER RD) S/O SR 197(RICHMOND RD)	C	II	.	.	1810	.	1470
15	DRESDEN	43907	0128X	SR 128 (CEDAR GROVE) W/O SR 27(GARDINER)	C	II	.	.	860	.	.
15	DRESDEN	43603	0197X	SR 197(RICHMOND RD) E/O SR 128(RIVER RD)	C	I+II	.	.	1680	.	1640
15	DRESDEN	43607	0197X	SR 197(RICHMOND RD) W/O SR 128(RIVER RD)	C	I	.	.	3230	.	3250
15	DRESDEN	43707	0197X	SR 197(RICHMOND) W/O SR127(MIDDLE)@B3341	C	I+II	.	.	1580	.	1560
15	DRESDEN	48207	0197X	SR 197 W/O IR 1316 @RICHMOND TL @BR#2506	C	I+II	.	.	3280	.	3340
15	EDGECOMB	42603	0001X	US 1 E/O IR 695 (CROSS RD)	C	II+III	.	.	12870	.	12850
15	EDGECOMB	42607	0001X	US 1 W/O IR 611 (COCHRAN RD)	C	II+III	.	.	11500	.	11160
15	EDGECOMB	46906	0001X	US 1 SW/O IR 447 (DODGE RD)	C	II+III	.	.	12290	.	12780
15	EDGECOMB	49800	0001X	US 1 @ WISCASSET TL	C	II+III	.	.	18760	.	17610
15	EDGECOMB	53907	0001X	US 1 W/O IR 3615 (ATLANTIC HWY)(E JCT)	C	II+III	.	.	12470	.	12850
15	EDGECOMB	69507	0001X	US 1/SR 27 W/O IR 444 (ENGLEBREKT)@#2160	C	II+III	.	.	16440	.	15720
15	EDGECOMB	69607	0001X	US 1/SR 27 W/O SR 27	C	II+III	.	.	16490	.	16130

2007 Maine Transportation Count Book

County

Lincoln

TOWN	STATION	ROAD	LOCATION	TYPE	GROUP	AADT03	AADT04	AADT05	AADT06	AADT07	
15	EDGECOMB	42805	0027X	SR 27 S/O IR 693 (EDDY RD)	C	ATR41601	.	.	6740	.	7190
15	EDGECOMB	50406	0027X	SR 27 SW/O IR 730 (SUNSET VISTA RD)	C	ATR41601	.	.	6140	.	6570
15	EDGECOMB	69604	0027X	SR 27 SE/O US 1	C	ATR41601	.	.	4700	.	4730
15	EDGECOMB	41701	00417	IR 417 (RIVER RD) N/O IR 428 (MCKAY RD)	C	ATR41603	.	.	1760	.	1150
15	EDGECOMB	46301	00417	IR 417 (RIVER) N/O IR1113(BRICK HILL)@TL	C	ATR41603	.	.	1800	.	1120
15	EDGECOMB	47104	00428	IR 428 (MCKAY RD) SE/O SR 27	C	ATR41601	.	.	430	.	290
15	EDGECOMB	69501	00444	IR 444 (ENGLEBREKT RD) N/O US 1/SR 27	C	II	.	.	150	.	150
15	EDGECOMB	42505	00693	IR 693 (EDDY RD) S/O US 1/ SR 27	C	ATR41601	.	.	1510	.	1400
15	EDGECOMB	42808	00693	IR 693 (EDDY RD) NW/O SR 27	C	ATR41601	.	.	940	.	940
15	EDGECOMB	42605	00695	IR 695 (CROSS RD) S/O US 1	C	II	.	.	2130	.	2250
15	HIBBERTS GORE	32200	00588	IR 588 (GORE RD) @ BR# 3989	C	I	.	.	60	.	.
15	JEFFERSON	30604	0017X	SR 17(ROCKLAND RD) SE/O SR32(AUGUSTA RD)	C	II	.	.	5230	.	4670
15	JEFFERSON	30608	0017X	SR 17/32 NW/O SR 32 @ WHITEFIELD TL	C	I	.	.	6930	.	7380
15	JEFFERSON	53500	00325	IR 325 (SOMERVILLE RD) @ BR# 3809	C	I	270
15	JEFFERSON	30605	0032X	SR 32(AUGUSTA RD) S/O SR 17(ROCKLAND RD)	C	II	.	.	2690	.	2840
15	JEFFERSON	31603	0032X	SR 32/126 (WALDOBORO RD) E/O SR 126	C	II	.	.	3110	.	3210
15	JEFFERSON	31608	0032X	SR 32(WALDOBORO) NW/O SR126(BUNKER HILL)	C	II	.	.	1870	.	2070
15	JEFFERSON	31803	0032X	SR 32 (WALDOBORO RD) E/O SR 126@BR# 2378	C	II	.	.	3270	.	3340
15	JEFFERSON	33500	0032X	SR 32 (WALDOBORO RD) @ WALDOBORO TL	C	II	.	.	1410	.	1470
15	JEFFERSON	32901	00337	IR 337(N MOUNTAIN RD) N/O IR 582(VILLAGE	C	I	.	.	270	.	230
15	JEFFERSON	31906	00545	IR 545 (E POND RD) SW/O SR 32(WALDOBORO)	C	III	1350
15	JEFFERSON	32307	00556	IR 556 (HODGKINS HILL) W/O IR 569(GOOSE)	C	I	510
15	JEFFERSON	32305	00560	IR 560 (GOOSE HILL) S/O IR 556(HODGKINS)	C	I	.	.	170	.	160
15	JEFFERSON	38104	00569	IR 569 (GOOSE HILL) SE/O SR 126@BR# 3405	C	I	.	.	300	.	290
15	JEFFERSON	38408	00578	IR 578(ATKINS RD) NW/O SR215(S CLARY RD)	C	I	.	.	140	.	170
15	JEFFERSON	31703	00582	IR 582 (VILLAGE ST) E/O SR 32/126	C	I	.	.	660	.	640
15	JEFFERSON	31307	0126X	SR 126(GARDINER) W/O SR 215(S CLAY)W JCT	C	II	.	.	1150	.	1260
15	JEFFERSON	31507	0126X	SR 126(GARDINER) W/O SR 213(BUNKER HILL)	C	II	.	.	1020	.	1060
15	JEFFERSON	31606	0126X	SR 126 (BUNKER HILL) SW/O SR 32(AUGUSTA)	C	II	.	.	1590	.	1540
15	JEFFERSON	31801	0126X	SR 126 (WASHINGTON) N/O SR 32(WALDOBORO)	C	II	.	.	1150	.	1080
15	JEFFERSON	32003	0126X	SR 126(WASHINGTON) E/O IR 532(VALLEY RD)	C	II	.	.	830	.	710
15	JEFFERSON	32007	0126X	SR 126 W/O IR 532 (VALLEY RD) @ BR# 3045	C	II	.	.	1180	.	1070
15	JEFFERSON	32001	0206X	IR 532(VALLEY RD) N/O SR 126(WASHINGTON)	C	II	.	.	380	.	480
15	JEFFERSON	31506	0213X	SR 213(BUNKER HILL) SW/O SR126(GARDINER)	C	II	.	.	860	.	900

2007 Maine Transportation Count Book

County

Lincoln

TOWN	STATION	ROAD	LOCATION	TYPE	GROUP	AADT03	AADT04	AADT05	AADT06	AADT07
JEFFERSON	33301	0213X	SR 213(BUNKER HILL) N/O IR566(PUNK PT RD)	C	III	660
JEFFERSON	47805	0213X	SR 213(BUNKER HILL) S/O IR1338(BENNER RD)	C	II	.	.	650	.	630
JEFFERSON	50102	0213X	SR 213(BUNKER HILL) NE/O IR1135(BOUCHER)	C	II	720
JEFFERSON	31306	0215X	SR 215(S CLARY RD) SW/O SR 126(GARDINER)	C	II	1130
JEFFERSON	38402	0215X	SR 215(S CLARY RD) NE/O IR578(ATKINS RD)	C	II	.	.	810	.	880
JEFFERSON	38406	0215X	SR 215(S CLARY RD) SW/O IR578(ATKINS RD)	C	II	.	.	820	.	890
JEFFERSON	44905	0215X	SR 215 (S CLARY RD) S/O IR 377(EGYPT RD)	C	II	.	.	810	.	830
JEFFERSON	45505	0215X	SR 215(S CLARY RD) S/O SR 32(AUGUSTA RD)	C	II	.	.	670	.	580
NEWCASTLE	00304	0001B	US 1B (MAIN ST) SE/O SR 215 (MILLS RD)	C	III	.	.	10440	.	10170
NEWCASTLE	00306	0001B	US 1B (RIVER RD) SW/O US 1B (MAIN ST)	C	III	.	.	8030	.	8420
NEWCASTLE	00702	0001X	US 1 NE/O HOPKINS HILL RD	C	II+III	.	.	13860	.	.
NEWCASTLE	00802	0001X	US 1 NE/O US 1B OFF RAMP	C	II+III	.	.	7550	.	7980
NEWCASTLE	41803	0001X	US 1 E/O IR 446 (SHEEPSCOT RD)	T	II+III	.	.	13950	.	13680
NEWCASTLE	41807	0001X	US 1 W/O IR 446 (SHEEPSCOT RD)	T	II+III	.	.	12740	.	12530
NEWCASTLE	46802	0001X	US 1 NE/O IR 451 (LEWIS HILL RD)	C	II+III	12590
NEWCASTLE	46902	0001X	US 1 0.4MI NE/O IR 447 (STATION RD)	C	II+III	.	.	12370	.	13090
NEWCASTLE	00506	00417	RIVER RD SW/O IR 1582 (SNEAD SPUR RD)	C	ATR41603	1570
NEWCASTLE	41808	00446	IR 446 (SHEEPSCOT RD) NW/O US 1	T	II	.	.	1680	.	1560
NEWCASTLE	00308	00448	ACADEMY HILL RD NW/O SR 215 (MILLS RD)	C	I	.	.	2940	.	2520
NEWCASTLE	01108	00448	E OLD COUNTY RD NW/O ACADEMY HILL RD	C	I	.	.	230	.	150
NEWCASTLE	01102	00533	ACADEMY HILL RD NE/O E OLD COUNTY RD	C	I	.	.	2270	.	2220
NEWCASTLE	00202	00539	GLIDDEN ST NE/O US 1B (MAIN ST)	C	I	.	.	330	.	300
NEWCASTLE	44706	00579	IR 579(N NEW CASTLE RD) SW/O SR194(POND)	C	II	400
NEWCASTLE	01404	00861	STEWART ST SE/O SR 215 (MILLS RD)	C	I	.	.	190	.	140
NEWCASTLE	00406	01582	RIVER RD SW/O CUT FROM US 1B	C	ATR41603	.	.	2110	.	1730
NEWCASTLE	00507	01582	IR 1582 (SNEAD SPUR RD) W/O RIVER RD	C	II+III	640
NEWCASTLE	44807	0194X	SR 194 (POND RD) W/O SR 215 (RIDGE RD)	C	II	.	.	1170	.	970
NEWCASTLE	34302	0213X	SR 213 (BUNKER HILL) NE/O SR 215 (POND)	C	II	1100
NEWCASTLE	00302	0215X	SR 215 (MILLS RD) NE/O US 1B (MAIN ST)	C	II	.	.	3330	.	3590
NEWCASTLE	01402	0215X	SR 215 (MILLS RD) NE/O STEWART ST	C	II	.	.	3380	.	3240
NEWCASTLE	01706	0215X	SR 215 (MILLS RD) SW/O OFF RMP FROM US 1	C	II	.	.	3130	.	3220
NEWCASTLE	34305	0215X	SR 215(POND RD) S/O SR 213(BUNKER HILL)	C	II	.	.	2570	.	2480
NEWCASTLE	34307	0215X	SR 215 W/O SR 213 (BUNKER HILL RD)	C	II	.	.	1680	.	1660
NEWCASTLE	34502	0215X	SR 215(NB)(MAIN) NE/O SR 215(SB)@BR#3923	C	II	.	.	1240	.	1330

2007 Maine Transportation Count Book

Lincoln

TOWN	STATION	ROAD	LOCATION	TYPE	GROUP	AADT03	AADT04	AADT05	AADT06	AADT07
15 NEWCASTLE	34505	0215X	SR 215 (POND RD) S/O SR 215 (SB)(AUSTIN)	C	II	.	.	2000	.	2110
15 NEWCASTLE	37401	0215X	SR 215 (MILLS RD) N/O SR 215(SB)@BR#5608	C	II	.	.	1580	.	1670
15 NEWCASTLE	37405	0215X	SR 215(MILLS) S/O SR 215S(AUSTIN)(E JCT)	C	II	.	.	2220	.	2270
15 NEWCASTLE	44802	0215X	SR 215 (RIDGE RD) NE/O SR 194 (POND RD)	C	II	.	.	910	.	910
15 NOBLEBORO	49402	0001X	US 1 NE/O IR 1182	A	ATR49402	10520	10610	10350	10450	10450
15 NOBLEBORO	33903	0001X	US 1 E/O IR 545 (E POND RD)	C	ATR49402	.	.	10140	.	10220
15 NOBLEBORO	33907	0001X	US 1 W/O IR 545 (E POND RD)	C	ATR49402	.	.	11390	.	11570
15 NOBLEBORO	53303	0001X	US 1 E/O IR 986 @ WALDOBORO TL	C	ATR49402	.	.	9690	.	10550
15 NOBLEBORO	36301	00503	IR 503 (BACK MEADOW RD) N/O US 1	C	II	.	.	470	.	380
15 NOBLEBORO	36304	00503	IR 503 (BACK MEADOW RD) SE/O US 1	C	III	.	.	830	.	740
15 NOBLEBORO	34004	00517	IR 517 (DUCK PUDDLE RD) SE/O IR 550	C	III	.	.	960	.	830
15 NOBLEBORO	34801	00537	IR 537 (W NECK RD) N/O IR 544(BORLAND)	C	II	.	.	470	.	510
15 NOBLEBORO	34806	00537	IR 537(BORLAND RD) SW/O IR 537(W NECK)	C	II	.	.	410	.	460
15 NOBLEBORO	34102	00543	IR 543 (EAST NECK RD) NE/O IR 1592	C	II	.	.	450	.	480
15 NOBLEBORO	34803	00544	IR 544 (BORLAND RD) E/O IR 537(W NECK)	C	II	.	.	420	.	340
15 NOBLEBORO	33001	00545	IR 545 (E POND RD) N/O IR 551	C	II	.	.	1490	.	1370
15 NOBLEBORO	33006	00545	IR 545 (E POND RD) SW/O IR 551	C	II	.	.	1230	.	1140
15 NOBLEBORO	33901	00545	IR 545 (E POND RD) N/O US 1	C	II	.	.	1860	.	.
15 NOBLEBORO	34200	00546	IR 546 (LWR CROSS RD) @ MCRR	C	II	.	.	480	.	410
15 NOBLEBORO	37204	00550	IR 550 (WINSLOW HILL) SE/O US 1 (N JCT)	C	III	.	.	300	.	300
15 NOBLEBORO	37208	00550	IR 550 (VANNAH RD) NW/O US 1	C	II	.	.	360	.	300
15 NOBLEBORO	51804	00550	IR 550 (WINSLOW HILL) SE/O US 1 (S JCT)	C	III	.	.	740	.	610
15 NOBLEBORO	33004	00551	IR 551 SE/O IR 545 (E POND RD)	C	II	.	.	310	.	440
15 NOBLEBORO	34103	01592	IR 1592 (MAIN ST) E/O IR 543 (E NECK RD)	C	II	.	.	1970	.	1750
15 NOBLEBORO	36008	01592	IR 1592 (CENTER ST) NW/O US 1	C	II	.	.	1410	.	1270
15 SOMERVILLE	30502	0017X	SR 17 NE/O IR 329 (CRUMMETT MTN RD)	C	II	.	.	4200	.	4300
15 SOMERVILLE	50003	0017X	SR 17 E/O IR 321(JONES RD)	C	II	4560
15 SOMERVILLE	30202	00320	IR 320 (SANDHILL RD) NE/O SR 105	C	I	170
15 SOMERVILLE	50005	00321	IR 321 (JONES RD) S/O SR 17	C	I	.	.	120	.	170
15 SOMERVILLE	30101	00325	IR 325 (TURNER RDG RD) N/O SR 105	C	I	580
15 SOMERVILLE	30501	00329	IR 329 (CRUMMETT MTN RD) N/O SR 17	C	I	.	.	60	.	.
15 SOMERVILLE	30103	0105X	SR 105 E/O IR 325 (TURNER RDG RD)	C	I	.	.	610	.	580
15 SOMERVILLE	30107	0105X	SR 105 W/O IR 325 (TURNER RDG RD)	C	I	.	.	770	.	740
15 SOMERVILLE	30300	0105X	SR 105 @ WASHINGTON TL	C	I	.	.	520	.	470

2007 Maine Transportation Count Book

County

Lincoln

TOWN	STATION	ROAD	LOCATION	TYPE	GROUP	AADT03	AADT04	AADT05	AADT06	AADT07
15 SOUTH BRISTOL	39303	00458	IR 458 (MCFARLAND COVE RD) E/O SR 129	C	III	.	.	310	.	320
15 SOUTH BRISTOL	51706	00460	IR 460 (S RD) SW/O SR 129	C	III	.	.	180	.	200
15 SOUTH BRISTOL	46107	00461	IR 461 (WEST SIDE RD) W/O SR 129	C	III	.	.	280	.	440
15 SOUTH BRISTOL	38603	00463	IR 463 (HARRINGTON RD) E/O SR 129	C	III	.	.	910	.	950
15 SOUTH BRISTOL	49206	00463	IR 463 (CLARK COVE RD) SW/O SR 129	C	III	.	.	250	.	250
15 SOUTH BRISTOL	50804	00463	IR 463 (CLARK COVE) SE/O IR 1407 @BR2651	C	III	.	.	100	.	90
15 SOUTH BRISTOL	38601	0129X	SR 129 N/O IR 463 (CLARK COVE RD)	C	III	.	.	1680	.	1750
15 SOUTH BRISTOL	38606	0129X	SR 129 SW/O IR 463 (HARRINGTON RD)	C	III	.	.	1760	.	1870
15 SOUTH BRISTOL	38701	0129X	SR 129 N/O IR 3622 (SPLIT ROCK RD)	C	III	.	.	2100	.	2150
15 SOUTH BRISTOL	39301	0129X	SR 129 N/O IR 458 (MCFARLAND COVE RD)	C	III	.	.	1620	.	.
15 SOUTH BRISTOL	39405	0129X	SR 129 S/O IR 684 @ BR# 2339	C	III	.	.	1340	.	1540
15 SOUTH BRISTOL	39501	0129X	IR 1651 N/O IR 688 (EAST SIDE RD)	C	III	.	.	290	.	330
15 SOUTHPORT	40501	0027X	SR 27(TOWNLANDING RD) N/O IR 864(GRAY)	C	ATR41601	.	.	300	.	350
15 SOUTHPORT	40606	0027X	SR 27(HENDRICKS HILL) SW/O IR 410(CROSS)	C	ATR41601	.	.	1670	.	1610
15 SOUTHPORT	40807	0027X	SR 27 (HENDRICKS HILL RD) W/O IR 732	C	ATR41601	.	.	1920	.	1890
15 SOUTHPORT	40401	0238X	SR 238 (CAPE NEWAGEN RD) N/O SR 27	C	ATR41601	.	.	430	.	400
15 SOUTHPORT	40805	0238X	SR 238(CAPE NEWAGEN) S/O SR 27 @BR# 2848	C	ATR41601	.	.	1430	.	1150
15 WALDOBORO	00103	0001X	US 1 (ATLANTIC HWY) E/O DEPOT ST	T	ATR49402	12770
15 WALDOBORO	00203	0001X	US 1 E/O SR 220 (WASHINGTON RD)	C	ATR49402	.	.	11140	.	11870
15 WALDOBORO	00207	0001X	US 1 W/O SR 220 (WASHINGTON RD)	C	ATR49402	.	.	12370	.	12550
15 WALDOBORO	00403	0001X	US 1 (ATLANTIC HWY) E/O SR 32 @ CUL	T	ATR49402	.	.	12860	.	13250
15 WALDOBORO	00407	0001X	US 1 W/O SR 32	C	ATR49402	10320
15 WALDOBORO	33403	0001X	US 1 (ATLANTIC HWY) E/O SR 235	C	II	.	.	10190	.	11220
15 WALDOBORO	33503	0001X	US 1 E/O IR 1312 (COLES HILL RD)	T	III	9740
15 WALDOBORO	33603	0001X	US 1 E/O IR 561(MANKTOWN RD) @ WARREN TL	T	II	.	.	10810	.	9810
15 WALDOBORO	00404	0032X	SR 32 SE/O US 1 (ATLANTIC HIGHWAY)	C	II	.	.	3780	.	.
15 WALDOBORO	00408	0032X	SR 32 NW/O US 1 (ATLANTIC HIGHWAY)	C	II	.	.	3150	.	2830
15 WALDOBORO	00601	0032X	SR 32 N/O MAIN ST	T	II	.	2700	.	.	.
15 WALDOBORO	00805	0032X	SR 32 0.18 MILES S/O MAIN ST @ CUL	C	II	.	2430	2500	.	2310
15 WALDOBORO	33101	0032X	SR 32 N/O IR 551(N NOBLEBORO RD)	C	II	.	.	2030	.	1710
15 WALDOBORO	33705	00527	IR 527 (GOSHEN) S/O IR 1312(OLD ROUTE 1)	C	I	.	.	460	.	430
15 WALDOBORO	35403	00528	IR 528 (FINNTOWN RD) E/O SR 220	C	II	.	.	810	.	690
15 WALDOBORO	00603	00536	MAIN ST E/O SR 32	C	I	.	2590	2490	.	2860
15 WALDOBORO	00707	00536	MAIN ST 0.16 MILES W/O SR 32 @ CUL	T	I	.	1440	.	.	.

2007 Maine Transportation Count Book

County

Lincoln

	TOWN	STATION	ROAD	LOCATION	TYPE	GROUP	AADT03	AADT04	AADT05	AADT06	AADT07
15	WALDOBORO	01007	00536	MAIN ST W/O PINE ST	C	I	2840
15	WALDOBORO	01107	00536	MAIN ST W/O JEFFERSON ST	C	I	.	.	1830	.	2970
15	WALDOBORO	33107	00551	IR 551(N NOBLEBORO RD) W/O SR 32	C	II	.	.	850	.	780
15	WALDOBORO	00104	00555	JEFFERSON ST SE/O US 1 (ATLANTIC HWY)	T	I	.	.	2310	.	2370
15	WALDOBORO	00108	00555	DEPOT ST NW/O US 1 (ATLANTIC HWY)	T	I	1110
15	WALDOBORO	01108	00555	JEFFERSON ST NW/O MAIN ST	C	I	.	.	2920	.	.
15	WALDOBORO	01201	00555	JEFFERSON ST N/O SCHOOL ST	C	I	2580
15	WALDOBORO	32403	00556	IR 556 (OLD AUGUSTA RD) E/O SR 220	C	I	.	.	850	.	780
15	WALDOBORO	32407	00556	IR 556 (OLD AUGUSTA RD) W/O SR 220	C	I	.	.	650	.	580
15	WALDOBORO	47702	00559	IR 559 (FEYERS RD) NE/O SR 220	C	I	.	.	370	.	340
15	WALDOBORO	33601	00561	IR 561 (MANKTOWN RD) N/O US 1 (ATLANTIC)	T	I	1660
15	WALDOBORO	01203	01010	SCHOOL ST E/O JEFFERSON ST	C	I	160
15	WALDOBORO	01006	01161	PINE ST SW/O MAIN ST	C	I	300
15	WALDOBORO	33707	01312	IR 1312(OLD ROUTE 1) W/O IR 527 (GOSHEN)	C	I	.	.	350	.	430
15	WALDOBORO	00202	0220X	SR 220 (WASHINGTON RD) NE/O US 1	C	II	.	.	2370	.	2440
15	WALDOBORO	00206	0220X	SR 220 (MAIN ST) SW/O US 1	C	II	.	.	2450	.	2420
15	WALDOBORO	00900	0220X	SR 220 (FRIENDSHIP ST) @TRANS LINE @ CUL	C	II	.	.	2400	.	2420
15	WALDOBORO	01102	0220X	SR 220 (MAIN ST) NE/O JEFFERSON ST	C	II	.	.	3100	.	3020
15	WALDOBORO	01104	0220X	SR 220 (FRIENDSHIP ST) SE/O MAIN ST	C	II	.	.	2760	.	2990
15	WALDOBORO	01306	0220X	SR 220 (MAIN ST) SW/O OLD ROUTE ONE RD	C	II	.	.	2590	.	2730
15	WALDOBORO	32405	0220X	SR 220 S/O IR 556 (OLD AUGUSTA RD)	C	II	1420
15	WALDOBORO	35401	0220X	SR 220 N/O IR 528 (FINNTOWN RD)	C	II	.	.	1860	.	1810
15	WALDOBORO	35405	0220X	SR 220 S/O IR 528 (FINNTOWN RD)	C	II	.	.	1860	.	1720
15	WALDOBORO	33401	0235X	SR 235 N/O US 1 (ATLANTIC HWY)	C	II	.	.	1400	.	1330
15	WESTPORT	39005		(PW) KEHAIL PT RD S/O IR 397 (E SHORE)	C	III	.	.	50	.	.
15	WESTPORT	51102	00395	IR 395 (N END RD) NE/O SR 144	C	III	.	.	70	.	60
15	WESTPORT	43201	0144X	SR 144 N/O IR 394 (SORTWELL RD)	C	III	.	.	530	.	580
15	WESTPORT	44207	0144X	SR 144 W/O IR 1601 (BRIDGE RD) @TL@#3180	C	III	.	.	1490	.	.
15	WESTPORT	50605	0144X	SR 144 S/O IR 388 (GREEN LEAF RD)	C	III	.	.	850	.	860
15	WESTPORT	51106	0144X	SR 144 SW/O IR 1601 (BRIDGE RD)	C	III	.	.	1270	.	1280
15	WESTPORT	44202	01961	IR 1961 (LORD RD) NE/O SR 144	C	III	.	.	230	.	200
15	WESTPORT	41005	03616	IR 3616 (MAIN RD) S/O IR 393(W SHORE RD)	C	III	.	.	100	.	160
15	WHITEFIELD	30704	0017X	SR 17/32(ROCKLAND RD) SE/O SR 218(MILLS)	C	I	6900
15	WHITEFIELD	30708	0017X	SR 17/32(ROCKLAND RD) NW/O SR 218(MILLS)	C	I	.	.	6570	.	6880

2007 Maine Transportation Count Book

County

Lincoln

	TOWN	STATION	ROAD	LOCATION	TYPE	GROUP	AADT03	AADT04	AADT05	AADT06	AADT07
15	WHITEFIELD	49308	0017X	SR 17/32 NW/O IR 313 (HOWE) @ WINDSOR TL	C	I	.	.	6500	.	6810
15	WHITEFIELD	31008	00303	IR 303 (COOPER RD) NW/O SR 126(GARDINER)	C	I	.	.	950	.	1370
15	WHITEFIELD	46002	00305	IR 305 (N HUNTS MEADOW) NE/O IR 303	C	I	530
15	WHITEFIELD	46006	00305	IR 305(HUNTS MEADOW) SW/O IR 303(COOPER)	C	I	590
15	WHITEFIELD	49306	00313	IR 313 (HOWE RD) SW/O SR 17/32(ROCKLAND)	C	I	.	.	370	.	350
15	WHITEFIELD	31102	00315	IR 315(VIGUE RD) NE/O SR126(GARDINER RD)	C	I	.	.	670	.	620
15	WHITEFIELD	30702	00325	IR 325(SOMERVILLE RD) NE/O IR 1581(MAIN)	C	I	.	.	400	.	420
15	WHITEFIELD	31205	00578	IR 578(HILTON RD) S/O SR 218(E RIVER RD)	C	I	.	.	440	.	440
15	WHITEFIELD	46602	00628	IR 628(WINDSOR RD) NE/O IR 1581(MAIN ST)	C	I	.	.	740	.	740
15	WHITEFIELD	31004	0126X	SR 126 (GARDINER) SE/O IR 303(COOPER RD)	C	I	.	.	1890	.	2330
15	WHITEFIELD	31006	0126X	SR 126 (GARDINER) SW/O IR 303(COOPER RD)	C	I	.	.	1050	.	1060
15	WHITEFIELD	31204	0126X	SR 126(GARDINER) SE/O SR218(E RIVER)SJCT	C	II	.	.	1260	.	1400
15	WHITEFIELD	46604	01581	IR 1581(MAIN) SE/O IR628(WINDSOR)@BR2175	C	I	.	.	1030	.	1020
15	WHITEFIELD	46608	01581	IR 1581(MAIN ST) NW/O IR 628(WINDSOR RD)	C	I	.	.	830	.	790
15	WHITEFIELD	45103	0194X	SR 194 E/O SR 218 (E RIVER RD)	C	II	.	.	280	.	300
15	WHITEFIELD	45105	0194X	SR 194/218(E RIVER RD) S/O SR194@BR#3831	C	I	.	.	780	.	780
15	WHITEFIELD	45207	0194X	SR 194 (PITTSTON RD) W/O SR 218 @BR#5197	C	I	.	.	770	.	830
15	WHITEFIELD	45307	0194X	SR 194(PITTSTON) W/O IR 617(TOWNHOUSE RD)	C	I	.	.	580	.	640
15	WHITEFIELD	46506	0194X	SR 194 SW/O IR 1909 (HOLLYWOOD BLVD)	C	II	.	.	190	.	180
15	WHITEFIELD	30706	0218X	SR 218(MILLS RD) SW/O SR 17/32(ROCKLAND)	C	I	1260
15	WHITEFIELD	31206	0218X	SR 218(E RIVER RD) SW/O IR578(HILTON RD)	C	I	.	.	700	.	800
15	WHITEFIELD	45101	0218X	SR 218 (E RIVER RD) N/O SR 194	C	I	.	.	690	.	730
15	WHITEFIELD	45204	0218X	SR 218 SE/O IR 1367 (KINGS MILLS RD)	C	II	.	.	730	.	770
15	WISCASSET	00403	0001X	US 1/SR 27 (MAIN) E/O SR 218 (FEDERAL)	C	II+III	.	.	17750	.	17770
15	WISCASSET	00408	0001X	US 1/SR 27 (MAIN ST) NW/O FORT HILL ST	C	II+III	.	.	17710	.	.
15	WISCASSET	01003	0001X	US 1/SR 27 (MAIN) E/O SR 27 (GARDINER)	C	II+III	.	.	17700	.	17800
15	WISCASSET	01006	0001X	US 1 (PARKER ST) SW/O SR 27 (GARDINER)	C	II	.	.	19250	.	19930
15	WISCASSET	01302	0001X	US 1 (PARKER ST) NE/O FLOOD AVE (N JCT)	C	II	.	.	19790	.	20310
15	WISCASSET	03102	0001X	US 1 (BATH RD) NE/O BIRCH PT RD	T	II	.	19390	.	.	.
15	WISCASSET	03106	0001X	US 1 (BATH RD) SW/O BIRCH PT RD	C	II	.	18950	.	.	18550
15	WISCASSET	42902	0001X	US 1 (BATH RD) NE/O SR 144	C	II	.	.	17300	.	17240
15	WISCASSET	42906	0001X	US 1 SW/O SR 144	C	II	.	.	17510	.	17610
15	WISCASSET	43000	0001X	US 1 (BATH RD) @ WOOLWICH TL	C	II	17520
15	WISCASSET	48802	0001X	US 1 (BATH RD) NE/O IR 372 (WARD BROOK)	C	II	.	.	18570	.	18550

2007 Maine Transportation Count Book

Lincoln

	TOWN	STATION	ROAD	LOCATION	TYPE	GROUP	AADT03	AADT04	AADT05	AADT06	AADT07
15	WISCASSET	49902	0001X	US 1 NE/O IR 371 (OLD BATH RD)(S JCT)	C	II	.	.	17600	.	17230
15	WISCASSET	00101	0027X	SR 27 (GARDINER RD) N/O WASHINGTON ST	C	II	6970
15	WISCASSET	01001	0027X	SR 27 (GARDINER RD) N/O US 1 (PARKER ST)	C	II	.	.	7280	.	.
15	WISCASSET	02201	0027X	SR 27 (GARDINER RD) N/O LANGDON RD	C	II	6470
15	WISCASSET	02308	00356	WILLOW LN NW/O CHURCHILL ST	C	I	.	.	720	.	640
15	WISCASSET	34608	00356	IR 356 (INDIAN) NW/O IR 359 (LOWELL TWN)	C	I	680
15	WISCASSET	47607	00358	IR 358 (FOYE RD) W/O SR 27	C	I	.	.	920	.	840
15	WISCASSET	47908	00358	IR 358 (OLD DRESDEN) NW/O IR 359	C	I	.	.	480	.	430
15	WISCASSET	34708	00359	IR 359 (LOWELL TOWN RD) NW/O IR 360	C	I	.	.	1090	.	1030
15	WISCASSET	47901	00359	IR 359 (LOWELL TOWN) N/O IR 358(FOYE RD)	C	I	.	.	390	.	350
15	WISCASSET	47905	00359	IR 359 (LOWELL TOWN) S/O IR 358 (FOYE)	C	I	.	.	580	.	520
15	WISCASSET	01208	00360	BRADFORD ST NW/O US 1 (PARKER ST)	C	I	.	.	1120	.	.
15	WISCASSET	42407	00367	IR 367 (W ALNA RD) W/O SR 218	C	I	.	.	1150	.	1010
15	WISCASSET	03104	00370	BIRCH PT RD SE/O US 1 (BATH RD)	C	II	.	1670	1550	.	1430
15	WISCASSET	03008	00371	OLD BATH RD NW/O US 1 (BATH RD)	C	I	.	.	680	.	640
15	WISCASSET	49901	00371	IR 371 (OLD BATH RD) N/O US 1 (BATH RD)	C	I	.	.	590	.	.
15	WISCASSET	43104	00386	IR 386 (OLD FERRY RD) SE/O SR 144	C	III	.	.	250	.	200
15	WISCASSET	01908	00900	HOOPER ST NW/O SR 218 (FEDERAL ST)	C	II	.	.	2140	.	1630
15	WISCASSET	02008	00900	HOOPER RD NW/O SR 27 (GARDINER RD)	C	II	.	.	520	.	440
15	WISCASSET	00205	00901	WATER ST S/O US 1/SR 27 (MAIN ST)	C	II	.	.	1230	.	.
15	WISCASSET	00405	00905	FORT HILL ST S/O US 1/SR 27 (MAIN ST)	C	II	.	.	350	.	360
15	WISCASSET	00904	00908	WASHINGTON ST SE/O HODGE ST	C	II	.	.	790	.	710
15	WISCASSET	01204	00912	LEE ST SE/O US 1 (PARKER ST)	C	II	.	.	710	.	880
15	WISCASSET	01604	00912	BRADBURY ST SE/O FORT HILL ST	C	II	.	.	160	.	180
15	WISCASSET	01405	00916	FORE ST S/O BRADBURY ST	C	II	.	.	480	.	570
15	WISCASSET	01708	00916	FORE ST NW/O WATER ST	C	II	.	.	780	.	690
15	WISCASSET	00107	01014	WASHINGTON ST W/O SR 27	C	II	.	.	140	.	140
15	WISCASSET	00902	01172	HODGE ST NE/O WASHINGTON ST	C	II	.	.	330	.	280
15	WISCASSET	30903	01202	IR 1202(OLD SHEEPSCOT) E/O SR218 @BR0625	C	II	.	.	260	.	220
15	WISCASSET	42904	0144X	SR 144 SE/O US 1 (BATH RD)	C	II	.	.	2290	.	2120
15	WISCASSET	43102	0144X	SR 144 NE/O IR 386 (OLD FERRY RD)	C	II	.	.	1360	.	1340
15	WISCASSET	48808	01594	IR 1594 (WARD BROOK RD) NW/O US 1(BATH)	C	I	.	.	80	.	.
15	WISCASSET	00401	0218X	SR 218 (FEDERAL) N/O US 1/SR 27 (MAIN)	C	II	.	.	1360	.	1260
15	WISCASSET	01902	0218X	SR 218 (FEDERAL ST) NE/O HOOPER ST	C	II	.	.	3060	.	2740

County

2007 Maine Transportation Count Book

Lincoln

TOWN	STATION	ROAD	LOCATION	TYPE	GROUP	AADT03	AADT04	AADT05	AADT06	AADT07
15 WISCASSET	42402	0218X	SR 218 (FEDERAL ST) NE/O IR 615(WHITE'S)	C	II	.	.	2390	.	2060