

Traffic Volume Counts 2007 Annual Report



MaineDOT

**Data collected and published by the
State of Maine**

**Department of Transportation
Traffic Engineering Division**

**In cooperation with the
United States Department of Transportation
Federal Highway Administration**

TABLE of CONTENTS

Forward

Continuous Count Program

24 Hour Traffic Data Collection Program

Description of Headings, Symbols, and Abbreviations

Map of State Count Zones

Graph of 2007 Weekly Group Mean Factors

List of 2007 Weekly Group Mean Factors

List of 2007 Weekly Group Mean Factors as a Percent of AADT

Traffic Volume Counts by County, Town, and Route

FOREWORD

The Department of Transportation, Traffic Engineering Division, and Traffic Monitoring Section is responsible for the collection of all types of traffic data and maintenance of a statewide traffic volume database. The reduction and reporting of traffic volumes and vehicle classification data are accomplished through two types of count programs. They are as follows:

CONTINUOUS COUNT PROGRAM

Traffic volumes are monitored on a continuous year round basis at 64 permanent recorder sites located on major highways throughout the State. These hourly counts are collected to produce an average weekday figure, a weekly average day, a monthly average day, and a monthly average weekday. This information is compiled to develop an Annual Average Daily Traffic (AADT) figure for each location. The AADT is computed from the average of the weekly average day totals for the year.

The increasing demand to determine the types of vehicles (e.g. passenger cars, single-unit trucks, and semi's) traveling Maine's highways has prompted the development of a Continuous Classification Program. Currently, the department has 23 locations along routed highways that collect data based on thirteen categories as defined by the Federal Highway Administration. An AADT is computed based on the total volume.

24 HOUR TRAFFIC DATA COLLECTION PROGRAM

Between April 1st and November 15th of each year, 24 hour traffic counts (i.e., coverage counts) are gathered to monitor traffic flow and changes in traffic patterns. These counts are generally taken at intersections with major routes and/or other significant roads, Compact Urban Lines (CUL), or Town Lines (TL), or in coordination with ongoing projects or special traffic studies for the Department.

Additionally, 24-hour vehicle classification counts are performed in conjunction with the coverage counts to provide a comprehensive view of traffic along the routed highways.

The State is divided into three count zones:

ZONE I : Southwestern Maine to western Penobscot Bay region. This zone includes all of York, Cumberland, Sagadahoc, Lincoln, Knox, and Waldo counties, Oxford county from Albany Twp/Waterboro West & Oxford, Otisfield, as well as Poland, and Mechanic Falls in Androscoggin county.

ZONE II : Western/Central Maine and eastern Penobscot Bay region. This zone includes all of Androscoggin except Poland, and Mechanic Falls, Franklin, Kennebec counties, the remainder of Oxford county, Somerset county from Bingham south plus between Flagstaff Lake area and Kennebec River, southern Penobscot county, and western Hancock county.

ZONE III : Northern and eastern Maine. This zone includes all of Aroostook, Piscataquis, Washington counties, northern and southeastern Hancock county, Penobscot county from Lagrange north, and the remainder of Somerset county.

These zones are counted on a five year cycle: Zones I and II are counted twice and Zone III once during each five year period. The coverage count program also consists of the “Special Counts” taken each year to satisfy Departmental needs, local requests, and Federal requirements. These include the annual collection of data for the State’s four urbanized areas (BACTS, KACTS, ATRC, and PACTS), Interstate System counts, and data collected from the various traffic studies conducted throughout the year. The 2007 Program included 3884 counts accomplished.

Once the AADT’s have been computed for all of the permanent recorder locations, weekly factors for each station are computed by dividing the AADT by each average weekly figure. Those stations which exhibit similar traffic patterns are assembled and placed into one of three groups:

URBAN : Roadways which carry commuter traffic and exhibit little seasonal change in traffic volumes.

ARTERIAL : Roadways which carry commuter traffic but exhibit moderate seasonal changes in traffic volumes.

RECREATIONAL : Roadways which are heavily influenced by seasonal traffic.

Within each of the three groups, a factor for each week is computed by averaging the weekly factors from each station within the group.

The 2007 Weekly Group Mean Factors were developed by averaging the Weekly Group Mean Factor for 2004, 2005 and 2006. The following pages show the graph of the 2007 Weekly Group Mean Factors, a list of these factors, and the 2007 Weekly Group Mean Factor as a percent of the AADT.

The 24-hour raw data may now be grouped and assigned a factor to produce an AADT. Growth factors for expanding traffic in uncounted zones are developed utilizing data from the permanent recorders and comparing it to the data from the previous year.

The updated AADT’s are entered into the Maine Department of Transportation’s database to be used by various Departmental employees.

DESCRIPTION of HEADINGS, SYMBOLS, AND ABBREVIATIONS

The following is a description of the column headings, symbols, and abbreviations used for the Coverage Count Section.

TOWN The town in which a count was taken

ROUTE The road or highway on which the count was taken.

Non-Interstate Highways and Roads

---- X indicates a Routed Highway

0196X = SR 196

0001X = US Route 1

---- A or --- B indicates an Alternate Routed Highway

0001A = US Route 1A 0009B = SR 9B

---- C indicates a Business Route

0001C = Business US Route 1, 1A, or 1B

0025C = Business SR 25

Just a number with no letter OR no numbers or letters indicates a non-routed highway

= Pine Hill Road

00001 = Hubbard Road

01414 = IR 1414

00991 = IR 991 (Biddeford Road)

Interstate System

---- X indicates Northbound or Eastbound

0095X = I-95 Northbound

0395X = I-395 Eastbound

---- S indicates Southbound

0095S = I-95 Southbound

---- W indicates Westbound

0395W = I-395 Westbound

LOCATION

A description of where the count was taken.

APP = Approach	ART = Arterial	AVE = Avenue	BK = Brook	BLVD = Boulevard
BR = Bridge	CIR = Circle	CL = County Line	CNR = Corner	CONN = Connector
CTR = Center	CUL = Compact Urban Line	CWY = Cause way	CV = Cove	DR = Drive
EB = Eastbound	ENT = Entrance	FL = Fall	FLS = Falls	FT = Fort
HTS = Heights	HWY = Highway	INT'L = International	ILD=Island	IR = Inventory Road
LG = Long	LK = Lake	LN = Lane	LWR = Lower	LTL = Little
MT = Mount	MTN = Mountain	NB = Northbound	NH = New Hampshire	OW = One Way
PD = Pond	PK = Park	PKWY = Park Way	PL = Place	PT = Point
PZ = Plaza	RD = Road	RDG = Ridge	RMP = Ramp	RR = Railroad
RV = River	SB = Southbound	SL = State Line	SQ = Square	SR = State Route
ST = Street	STA = Station	STR = Stream	TER = Terrace	TL = Town Line
TPK = Turnpike	TR = Trail	UPR = Upper	US = United States Route	WB = Westbound

N/O, NE/O, E/O, etc. = North of, Northeast of, East of, etc.

TYPE **Category for each count taken.**

- A Permanent Recorder Count**
- B BACTS Count**
- C Coverage Count**
- I Interstate Count**
- K KACTS Count**
- L ATRC Count (Formerly LACTS)**
- M Municipal, Town, Regional Count**
- P PACTS Count**
- S Special Count**
- T Turning Movement Count**
- W Weigh and Motion**
- Z Speed Count**

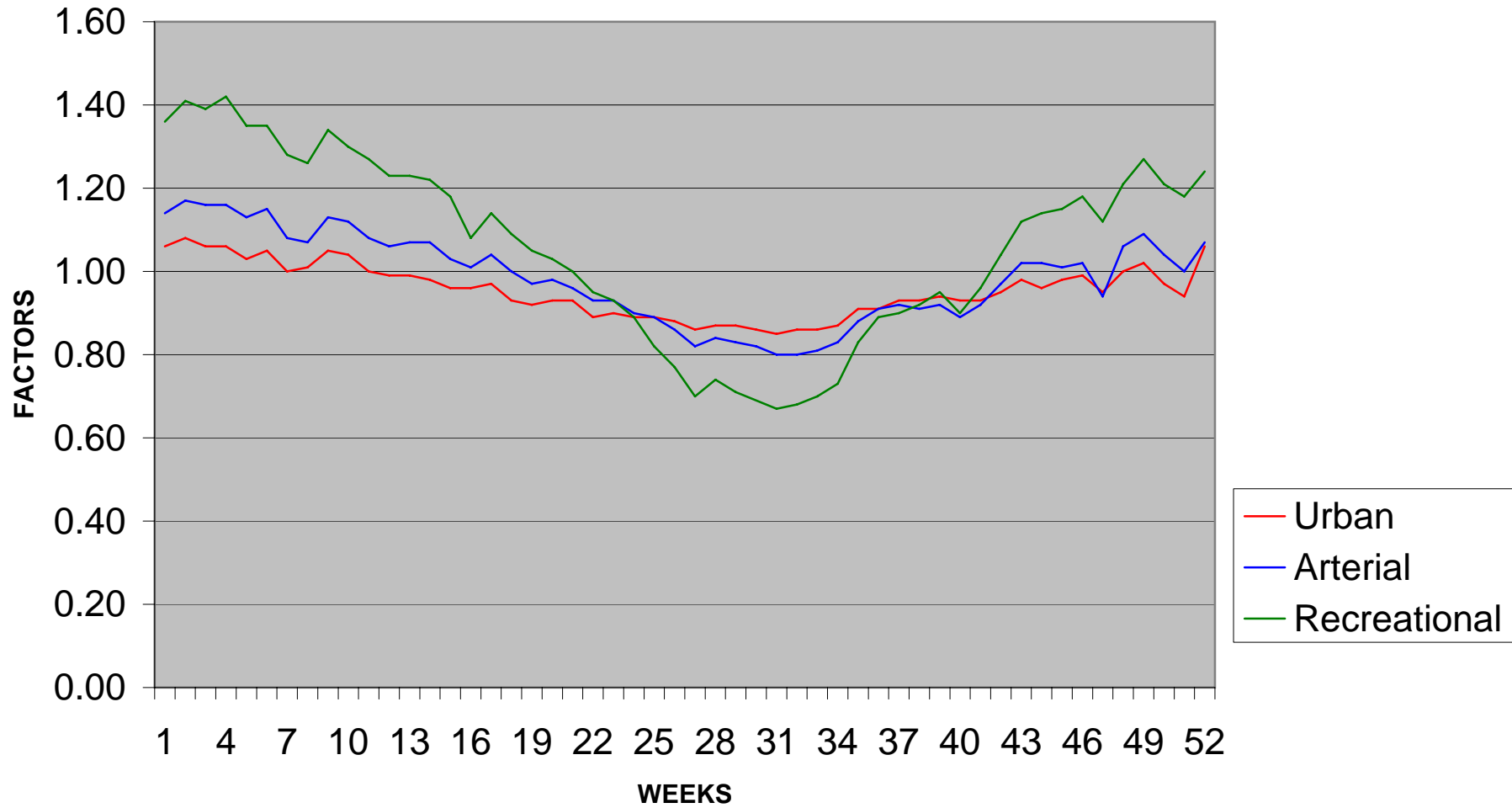
GROUP **The factor group assigned to the location.**

- I Urban Group II Arterial Group**
- III Recreational Group ATR Permanent Recorder Controlled Group**

AADT **Annual Average Daily Traffic**

2007 WEEKLY GROUP FACTORS

AVERAGE: 2004, 2005, 2006



2007
WEEKLY GROUP MEAN FACTORS
AVERAGE: 2004, 2005, 2006

Month	Start Date	Dates	Month Week #	Urban Group I	Arterial Group II	Recreational Group III	Group I + II	Group II + III	Group I + III	Year Week #
Jan/Feb	(31)	1,2,3,4,5	1	1.06	1.14	1.36	1.10	1.25	1.21	1
	(7)	8,9,10,11,1	2	1.08	1.17	1.41	1.13	1.29	1.25	2
	(14)	15,16,17,1	3	1.06	1.16	1.39	1.11	1.28	1.23	3
	(21)	22,23,24,2	4	1.06	1.16	1.42	1.11	1.29	1.24	4
	(28)	29,30,31,1	5	1.03	1.13	1.35	1.08	1.24	1.19	5
Feb/Mar	(4)	5,6,7,8,9	1	1.05	1.15	1.35	1.10	1.25	1.20	6
	(11)	12,13,14,1	2	1.00	1.08	1.28	1.04	1.18	1.14	7
	(18)	19,20,21,2	3	1.01	1.07	1.26	1.04	1.17	1.14	8
	(25)	26,27,28,2	4	1.05	1.13	1.34	1.09	1.24	1.20	9
March	(4)	5,6,7,8,9	1	1.04	1.12	1.30	1.08	1.21	1.17	10
	(11)	12,13,14,1	2	1.00	1.08	1.27	1.04	1.18	1.14	11
	(18)	19,20,21,2	3	0.99	1.06	1.23	1.03	1.15	1.11	12
	(25)	26,27,28,2	4	0.99	1.07	1.23	1.03	1.15	1.11	13
April/May	(1)	2,3,4,5,6	1	0.98	1.07	1.22	1.03	1.15	1.10	14
	(8)	9,10,11,12	2	0.96	1.03	1.18	1.00	1.11	1.07	15
	(15)	16,17,18,1	3	0.96	1.01	1.08	0.99	1.05	1.02	16
	(22)	23,24,25,2	4	0.97	1.04	1.14	1.01	1.09	1.06	17
	(29)	30,1,2,3,4	1	0.93	1.00	1.09	0.97	1.05	1.01	18
May/Jun	(6)	7,8,9,10,1	2	0.92	0.97	1.05	0.95	1.01	0.99	19
	(13)	14,15,16,1	3	0.93	0.98	1.03	0.96	1.01	0.98	20
	(20)	21,22,23,2	4	0.93	0.96	1.00	0.95	0.98	0.97	21
	(27)	28,29,30,3	5	0.89	0.93	0.95	0.91	0.94	0.92	22
Jun/Jul	(3)	4,5,6,7,8	1	0.90	0.93	0.93	0.92	0.93	0.92	23

	(10)	11,12,13,1	2	0.89	0.90	0.89	0.90	0.90	0.89	24
	(17)	18,19,20,2	3	0.89	0.89	0.82	0.89	0.86	0.86	25
	(24)	25,26,27,2	4	0.88	0.86	0.77	0.87	0.82	0.83	26
Jul/Aug	(1)	2,3,4,5,6	1	0.86	0.82	0.70	0.84	0.76	0.78	27
	(8)	9,10,11,12	2	0.87	0.84	0.74	0.86	0.79	0.81	28
	(15)	16,17,18,1	3	0.87	0.83	0.71	0.85	0.77	0.79	29
	(22)	23,24,25,2	4	0.86	0.82	0.69	0.84	0.76	0.78	30
	(29)	30,31,1,2,3	5	0.85	0.80	0.67	0.83	0.74	0.76	31
Aug/Sep	(5)	6,7,8,9,10	1	0.86	0.80	0.68	0.83	0.74	0.77	32
	(12)	13,14,15,1	2	0.86	0.81	0.70	0.84	0.76	0.78	33
	(19)	20,21,22,2	3	0.87	0.83	0.73	0.85	0.78	0.80	34
	(26)	27,28,29,3	4	0.91	0.88	0.83	0.90	0.86	0.87	35
September	(2)	3,4,5,6,7	1	0.91	0.91	0.89	0.91	0.90	0.90	36
	(9)	10,11,12,1	2	0.93	0.92	0.90	0.93	0.91	0.92	37
	(16)	17,18,19,2	3	0.93	0.91	0.92	0.92	0.92	0.93	38
	(23)	24,25,26,2	4	0.94	0.92	0.95	0.93	0.94	0.95	39
	(30)	1,2,3,4,5	1	0.93	0.89	0.90	0.91	0.90	0.92	40
Oct/Nov	(7)	8,9,10,11,1	2	0.93	0.92	0.96	0.93	0.94	0.95	41
	(14)	15,16,17,1	3	0.95	0.97	1.04	0.96	1.01	1.00	42
	(21)	22,23,24,2	4	0.98	1.02	1.12	1.00	1.07	1.05	43
	(28)	29,30,31,1	5	0.96	1.02	1.14	0.99	1.08	1.05	44
Nov/Dec	(4)	5,6,7,8,9	1	0.98	1.01	1.15	1.00	1.08	1.07	45
	(11)	12,13,14,1	2	0.99	1.02	1.18	1.01	1.10	1.09	46
	(18)	19,20,21,2	3	0.95	0.94	1.12	0.95	1.03	1.04	47
	(25)	26,27,28,2	4	1.00	1.06	1.21	1.03	1.14	1.11	48
December	(2)	3,4,5,6,7	1	1.02	1.09	1.27	1.06	1.18	1.15	49
	(9)	10,11,12,1	2	0.97	1.04	1.21	1.01	1.13	1.09	50
	(16)	17,18,19,2	3	0.94	1.00	1.18	0.97	1.09	1.06	51
	(23)	24,25,26,2	4	1.06	1.07	1.24	1.07	1.16	1.15	52

2007
WEEKLY GROUP MEAN FACTORS
AVERAGE: 2004, 2005, 2006
AS PERCENT OF AADT

Month	Start Date	Dates	Month Week #	Urban Group I	Arterial Group II	Recreational Group III	Group I + II	Group II + III	Group I + III	Year Week #
Jan/Feb	(31)	1,2,3,4,5	1	94.34	87.72	73.53	90.91	80.00	82.64	1
	(7)	8,9,10,11,1	2	92.59	85.47	70.92	88.50	77.52	80.00	2
	(14)	15,16,17,1	3	94.34	86.21	71.94	90.09	78.13	81.30	3
	(21)	22,23,24,2	4	94.34	86.21	70.42	90.09	77.52	80.65	4
	(28)	29,30,31,1	5	97.09	88.50	74.07	92.59	80.65	84.03	5
Feb/Mar	(4)	5,6,7,8,9	1	95.24	86.96	74.07	90.91	80.00	83.33	6
	(11)	12,13,14,1	2	100.00	92.59	78.13	96.15	84.75	87.72	7
	(18)	19,20,21,2	3	99.01	93.46	79.37	96.15	85.47	87.72	8
	(25)	26,27,28,2	4	95.24	88.50	74.63	91.74	80.65	83.33	9
March	(4)	5,6,7,8,9	1	96.15	89.29	76.92	92.59	82.64	85.47	10
	(11)	12,13,14,1	2	100.00	92.59	78.74	96.15	84.75	87.72	11
	(18)	19,20,21,2	3	101.01	94.34	81.30	97.09	86.96	90.09	12
	(25)	26,27,28,2	4	101.01	93.46	81.30	97.09	86.96	90.09	13
April/May	(1)	2,3,4,5,6	1	102.04	93.46	81.97	97.09	86.96	90.91	14
	(8)	9,10,11,12	2	104.17	97.09	84.75	100.00	90.09	93.46	15
	(15)	16,17,18,1	3	104.17	99.01	92.59	101.01	95.24	98.04	16
	(22)	23,24,25,2	4	103.09	96.15	87.72	99.01	91.74	94.34	17
	(29)	30,1,2,3,4	5	107.53	100.00	91.74	103.09	95.24	99.01	18
May/June	(6)	7,8,9,10,1	1	108.70	103.09	95.24	105.26	99.01	101.01	19
	(13)	14,15,16,1	2	107.53	102.04	97.09	104.17	99.01	102.04	20
	(20)	21,22,23,2	3	107.53	104.17	100.00	105.26	102.04	103.09	21
	(27)	28,29,30,3	4	112.36	107.53	105.26	109.89	106.38	108.70	22
June/July	(3)	4,5,6,7,8	1	111.11	107.53	107.53	108.70	107.53	108.70	23

	(10)	11,12,13,1	2	112.36	111.11	112.36	111.11	111.11	112.36	24
	(17)	18,19,20,2	3	112.36	112.36	121.95	112.36	116.28	116.28	25
	(24)	25,26,27,2	4	113.64	116.28	129.87	114.94	121.95	120.48	26
Jul/Aug	(1)	2,3,4,5,6	1	116.28	121.95	142.86	119.05	131.58	128.21	27
	(8)	9,10,11,12	2	114.94	119.05	135.14	116.28	126.58	123.46	28
	(15)	16,17,18,1	3	114.94	120.48	140.85	117.65	129.87	126.58	29
	(22)	23,24,25,2	4	116.28	121.95	144.93	119.05	131.58	128.21	30
	(29)	30,31,1,2,3	5	117.65	125.00	149.25	120.48	135.14	131.58	31
Aug/Sep	(5)	6,7,8,9,10	1	116.28	125.00	147.06	120.48	135.14	129.87	32
	(12)	13,14,15,1	2	116.28	123.46	142.86	119.05	131.58	128.21	33
	(19)	20,21,22,2	3	114.94	120.48	136.99	117.65	128.21	125.00	34
	(26)	27,28,29,3	4	109.89	113.64	120.48	111.11	116.28	114.94	35
September	(2)	3,4,5,6,7	1	109.89	109.89	112.36	109.89	111.11	111.11	36
	(9)	10,11,12,1	2	107.53	108.70	111.11	107.53	109.89	108.70	37
	(16)	17,18,19,2	3	107.53	109.89	108.70	108.70	108.70	107.53	38
	(23)	24,25,26,2	4	106.38	108.70	105.26	107.53	106.38	105.26	39
	(30)	1,2,3,4,5	1	107.53	112.36	111.11	109.89	111.11	108.70	40
Oct/Nov	(7)	8,9,10,11,1	2	107.53	108.70	104.17	107.53	106.38	105.26	41
	(14)	15,16,17,1	3	105.26	103.09	96.15	104.17	99.01	100.00	42
	(21)	22,23,24,2	4	102.04	98.04	89.29	100.00	93.46	95.24	43
	(28)	29,30,31,1	5	104.17	98.04	87.72	101.01	92.59	95.24	44
Nov/Dec	(4)	5,6,7,8,9	1	102.04	99.01	86.96	100.00	92.59	93.46	45
	(11)	12,13,14,1	2	101.01	98.04	84.75	99.01	90.91	91.74	46
	(18)	19,20,21,2	3	105.26	106.38	89.29	105.26	97.09	96.15	47
	(25)	26,27,28,2	4	100.00	94.34	82.64	97.09	87.72	90.09	48
December	(2)	3,4,5,6,7	1	98.04	91.74	78.74	94.34	84.75	86.96	49
	(9)	10,11,12,1	2	103.09	96.15	82.64	99.01	88.50	91.74	50
	(16)	17,18,19,2	3	106.38	100.00	84.75	103.09	91.74	94.34	51
	(23)	24,25,26,2	4	94.34	93.46	80.65	93.46	86.21	86.96	52

2007 Maine Transportation Count Book

County

Oxford

TOWN	STATION	ROAD	LOCATION	TYPE	GROUP	AADT03	AADT04	AADT05	AADT06	AADT07
17 ADAMSTOWN TWP	37000	0016X	SR 16 @ BR# 3540	C	III	420	.	.	400	.
17 ADAMSTOWN TWP	50600	0016X	SR 16 (WILSONS MILLS RD) @ RANGELEY TL	C	III	710	.	.	680	.
17 ADAMSTOWN TWP	52605	0016X	SR 16 S/O IR 3726 (BARK RD) @ BR# 0520	C	III	.	.	.	400	.
17 ADAMSTOWN TWP	52606	03726	(PW)IR 3726(BARK RD) SW/O SR 16@BR# 3861	C	III	.	.	.	20	.
17 ALBANY TWP	33506	0005X	SR 5/35 (CROOKED RIVER CWY) SW/O IR 552	C	ATR32203	1050	.	.	.	1070
17 ALBANY TWP	33508	0005X	SR 5(SONGO PD RD) NW/O IR 552(VERNON ST)	C	ATR32203	.	.	950	.	1200
17 ALBANY TWP	33701	0005X	SR 5/35 (CROOKED RIVER CWY) N/O SR 35	C	ATR32203	1200	.	960	.	970
17 ALBANY TWP	33708	0005X	SR 5 (MAINE) NW/O SR 5/35 @ BR# 5079	C	ATR32203	1290	.	1270	.	1230
17 ALBANY TWP	33808	0005X	SR 5 (CROOKED RIVER CWY) NW/O SR 5/35	C	ATR32601	1190
17 ALBANY TWP	33502	0035X	IR 552(VERNON ST) NE/O IR 723(HUNTS CNR)	C	II	430	.	450	.	400
17 ALBANY TWP	33704	0035X	SR 35 (MAINE ST) SE/O SR 5	C	ATR32203	1930	.	1550	.	1540
17 ALBANY TWP	61705	00721	IR 2389 S/O IR 730 @ BR# 0793	C	II	.	.	10	.	.
17 ALBANY TWP	61805	00721	IR 721(FLAT RD) S/O IR 2385(PW) @BR#0718	C	II	.	.	30	.	30
17 ALBANY TWP	61900	00721	IR 721 (CROCKER POND RD) @ BR# 0719	C	II	.	.	30	.	.
17 ALBANY TWP	33504	00723	IR 723(HUNTS CNR RD) SE/O IR 552(VERNON)	C	II	460	.	500	.	480
17 ALBANY TWP	59106	00734	IR 734(WARDWELL RD)SW/O IR 723 @BR# 0725	C	II	.	.	40	.	.
17 ANDOVER	30904	0005X	SR 5 SE/O SR 120	C	II+III	1150	.	.	1230	.
17 ANDOVER	31905	0005X	SR 5 S/O IR 343 (RUMFORD CTR RD)	C	II+III	870	.	.	800	.
17 ANDOVER	30901	00305	IR 305 (N ANDOVER RD) N/O SR 120	C	II	.	.	.	1030	.
17 ANDOVER	49201	00305	IR 305 (N ANDOVER) N/O IR 2049(PLEASANT)	C	II	840	.	.	820	.
17 ANDOVER	63800	00305	IR 305 @ BR# 0649 @ SAWYER BROOK	C	II+III	80
17 ANDOVER	30907	00306	IR 306 (UPTON RD) W/O SR 5	C	II	570	.	.	570	.
17 ANDOVER	31004	00347	IR 347 (E ANDOVER RD) SE/O SR 120	C	I	460	.	.	460	.
17 ANDOVER	48204	00347	IR 347 (FARMERS HILL RD) SE/O IR 2047	C	I	280	.	.	360	.
17 ANDOVER	30903	0120X	SR 120 E/O SR 5	C	I	1060	.	.	1220	.
17 ANDOVER	31003	0120X	SR 120 E/O IR 347 (E ANDOVER RD)	C	I	720	.	.	800	.
17 ANDOVER	31001	01889	IR 1889 (SOUTH ARM RD) N/O SR 120	C	II+III	230	.	.	230	.
17 ANDOVER	48501	01889	IR 1889(S ARM RD) N/O IR324(LOHNES FARM)	C	II+III	160	.	.	190	.
17 BETHEL	03203	0002C	RAILROAD ST (OW) E/O US 2/SR 5 @ BR#2483	C	II	1210	.	.	1140	.
17 BETHEL	32601	0002X	US 2/SR 5/26 N/O IR 662 (BETHEL RD)	A	ATR32601	6290	.	.	.	6480
17 BETHEL	03005	0002X	US 2/SR 5/26 RAMP S/O SR 5/26 (RAILROAD)	C	II	.	.	.	870	.
17 BETHEL	03204	0002X	US 2/SR 5 SE/O RAILROAD ST	C	ATR34304	5380	.	.	5070	.
17 BETHEL	03307	0002X	US 2 W/O SR 5/35 (LOVERS LN)	C	III	4700	.	.	4260	.
17 BETHEL	03601	0002X	US 2/SR 5/26 (MAYVILLE RD) N/O PARKWAY	C	ATR34304	8310	.	.	8690	.

2007 Maine Transportation Count Book

County

Oxford

TOWN	STATION	ROAD	LOCATION	TYPE	GROUP	AADT03	AADT04	AADT05	AADT06	AADT07
BETHEL	03605	0002X	US 2/SR 5/26(MAYVILLE RD) S/O PARKWAY	C	ATR34304	5880	.	.	5200	.
BETHEL	32702	0002X	US 2/SR 5/26 NE/O IR 310 (SUNDAY RIVER)	C	ATR34304	5670	.	.	5010	.
BETHEL	32802	0002X	US 2 NE/O IR 721(FLAT RD)	C	III	.	.	.	3430	.
BETHEL	32807	0002X	US 2 W/O IR 721(FLAT RD)	C	III	3390	.	.	3250	.
BETHEL	54702	0002X	US 2 NE/O IR 3722 (MT VIEW CIR)	C	III	3860	.	.	3690	.
BETHEL	02104	0005X	SR 5/35(SONGO RD) SE/O SR5/35(LOVERS LN)	C	ATR34304	1790	.	.	1570	.
BETHEL	03304	0005X	SR 5/35 (LOVERS LN) SE/O US 2	C	ATR34304	1340	.	.	1260	.
BETHEL	56501	0005X	SR 5/35 N/O IR 726 (SKILLINGS RD)	C	ATR32601	1780
BETHEL	00502	0026X	SR 26 (MAIN ST) NE/O PARKWAY	C	II	6170	.	.	6330	.
BETHEL	00506	0026X	SR 26 (MAIN ST) SW/O PARKWAY	C	II	5540	.	.	5590	.
BETHEL	00607	0026X	SR 26 (RAILROAD ST) W/O MECHANIC ST	C	II	3160	.	.	2690	.
BETHEL	32708	00310	IR 310 (SUNDAY RIVER) NW/O US 2/SR 5/26	C	ATR34304	3470	.	.	2240	.
BETHEL	00303	00552	VERNON ST E/O MAIN ST	C	II	1270	.	.	1540	.
BETHEL	01904	00552	VERNON ST SE/O TYLER ST @ CUL	C	II	1030	.	.	1340	.
BETHEL	48906	00660	IR 660 (RABBIT RD) SW/O SR 26 @ BR# 0710	C	I	90	.	.	40	.
BETHEL	32607	00662	IR 662 (NORTH RD) W/O IR 1143	C	II	760	.	.	930	.
BETHEL	01504	00720	PARADISE ST SE/O BROAD ST	C	I	850	.	.	780	.
BETHEL	32805	00721	IR 721 (FLAT RD) S/O US 2	C	II	430	.	.	510	.
BETHEL	02107	00724	GROVER HILL RD W/O SR 5/35 (LOVERS LN)	C	II	170	.	.	230	.
BETHEL	00405	01750	MAIN ST S/O SR 26 (RAILROAD ST)	C	II	4480
BETHEL	01102	01750	MAIN ST NE/O CHURCH ST	C	I	3090	.	.	3070	.
BETHEL	01104	01773	BROAD ST SE/O MAIN ST	C	I	1790	.	.	1550	.
BETHEL	01108	03827	CHURCH ST NW/O MAIN ST	C	I	1140	.	.	1120	.
BETHEL	02103	03827	MILL HILL RD E/O SR 5/35 (SONGO RD)	C	II	790
BETHEL	03603	03837	PARKWAY E/O US 2/SR 5/26 (MAYVILLE RD)	C	ATR34304	5190	.	.	5850	.
BROWNFIELD	62204	0005X	SR 5/113 SE/O IR 687 (FARNSWORTH RD)	A	ATR62204	3950	4050	4000	4040	3930
BROWNFIELD	46008	0005X	SR 5/113 NW/O IR 1906 (MISTY LN)	C	ATR62204	4550
BROWNFIELD	46204	0005X	SR 5/113 (PEQUAWKET) SE/O IR 1429 (PIG)	C	ATR62204	.	.	3110	.	3060
BROWNFIELD	46208	0005X	SR 5/113(PEQUAWKET) NW/O SR 160(DENMARK)	C	ATR62204	.	.	3670	.	3580
BROWNFIELD	49500	00687	IR 687 (FARNSWORTH RD) @ BR#0715	C	I	.	.	50	.	20
BROWNFIELD	46605	00703	IR 703(KENNARD HILL)S/O IR 810@PORTER TL	C	I	.	.	70	.	.
BROWNFIELD	30800	00704	IR 704 (CENTER CONWAY RD) @ NH SL	C	I	.	.	670	.	740
BROWNFIELD	46307	00704	IR 704 (MAIN ST) W/O SR 160 (MAIN ST)	C	I	.	.	1320	.	1220
BROWNFIELD	31100	00808	IR 808 (HAMPSHIRE RD) @ NH SL	C	I	.	.	270	.	270

2007 Maine Transportation Count Book

Oxford

	TOWN	STATION	ROAD	LOCATION	TYPE	GROUP	AADT03	AADT04	AADT05	AADT06	AADT07
17	BROWNFIELD	46603	00810	IR 810 (PHEN HILL) E/O IR 703 @ BR# 0738	C	I	.	.	30	.	.
17	BROWNFIELD	46203	01334	IR 1334 (DEPOT) E/O SR 5/113 (PEQUAWKET)	T	I	.	.	200	.	.
17	BROWNFIELD	46205	01429	IR 1429 (PIG ST) S/O SR 5/113(PEQUAWKET)	C	II	.	.	870	.	830
17	BROWNFIELD	45902	0160X	SR 160(DENMARK RD) NE/O IR1906(MISTY LN)	C	II	.	.	1680	.	1670
17	BROWNFIELD	46201	0160X	SR 160 (DENMARK) N/O SR 5/113(PEQUAWKET)	C	II	.	.	1140	.	980
17	BROWNFIELD	46206	0160X	SR 160(MAIN ST) SW/O SR 5/113(PEQUAWKET)	C	II	.	.	1570	.	1400
17	BROWNFIELD	46404	0160X	SR 160(Spring) SE/O IR 856(BURNT MEADOW)	C	II	.	.	1000	.	880
17	BROWNFIELD	53900	0160X	SR 160 (DENMARK RD) @ DENMARK TL	C	II	.	.	1420	.	1210
17	BROWNFIELD	53807	01905	IR 1905(PORTLAND LN) W/O IR 2155@BR#2839	C	I	.	.	0	.	.
17	BUCKFIELD	61908	00577	IR 577 (TUCKER RD) NW/O IR 578	C	I	.	.	.	130	.
17	BUCKFIELD	61906	00578	IR 578(HAMMOND HILL) SW/O IR 577@BR#0790	C	I	.	.	.	0	.
17	BUCKFIELD	38908	00585	IR 585 (HIGH ST) NW/O IR 1024(FAUNCE RD)	C	I	1510	.	.	1460	.
17	BUCKFIELD	60704	00585	IR 585 (HIGH ST) SE/O IR 594(PARIS HILL)	C	I	1040	.	.	890	.
17	BUCKFIELD	60708	00585	IR 585 (HIGH ST) NW/O IR 594	C	I	580	.	.	490	.
17	BUCKFIELD	41603	00586	IR 586 (E BUCKFIELD) E/O SR 117 (TURNER)	C	I	680	.	.	1130	.
17	BUCKFIELD	61805	00592	IR 592(SHED HOLLOW RD) S/O IR578@BR#0703	C	I	.	.	.	80	.
17	BUCKFIELD	60705	00594	IR 594 (PARIS HILL) S/O IR 585 @BR# 5450	C	I	500	.	.	460	.
17	BUCKFIELD	61706	00595	IR 595(BROCK SCH RD) SW/O IR 578@BR#0698	C	I	.	.	.	180	.
17	BUCKFIELD	55202	00619	IR 619(BRYANT RD) NE/O SR 117(TURNER ST)	C	I	470	.	.	460	.
17	BUCKFIELD	39000	0117X	SR 117 (TURNER ST) @ TURNER TL	C	I	3130	.	.	2590	.
17	BUCKFIELD	39106	0117X	SR 117 (STREAKED MTN) SW/O IR 615(SODOM)	C	I	1530	.	.	1720	.
17	BUCKFIELD	55100	0117X	SR 117 (STREAKED MTN RD) @ PARIS TL	C	I	1660	.	.	1670	.
17	BUCKFIELD	60403	0117X	SR 117(DEPOT) E/O IR2236(JOHN ELLINGWOOD	C	I	2340	.	.	2170	.
17	BUCKFIELD	60603	0117X	SR 117(TURNER) E/O IR 612(E JCT)@BR#3287	C	I	3150	.	.	2890	.
17	BUCKFIELD	55206	0124X	SR 124(ROUND ABOUT RD) SW/O SR117@BR5451	C	I	920	.	.	820	.
17	BUCKFIELD	60805	0124X	SR 124 S/O IR 623 (S HILL RD)	C	I	1270	.	.	1160	.
17	BUCKFIELD	60302	0140X	SR 140 (MORRILL ST) NE/O IR 585(HIGH ST)	C	I	1830	.	.	1860	.
17	BUCKFIELD	60505	01927	IR 1927 (N HILL RD) S/O IR 612(CROSS RD)	C	I	1220	.	.	1370	.
17	BYRON	31201	0017X	SR 17 N/O IR 324 (GARLAND POND RD)	C	III	570	.	.	560	.
17	BYRON	31300	0017X	SR 17 (SWIFT RIVER RD) @ TOWNSHIP E TL	C	III	440	.	.	510	.
17	BYRON	63604	0017X	SR 17 (SWIFT RIVER) SE/O IR 320 (BYRON)	C	III	680
17	BYRON	63608	0017X	SR 17 (SWIFT RIVER) NW/O IR 320 (BYRON)	C	III	640	.	.	590	.
17	BYRON	66600	0017X	SR 17 (SWIFT RIVER RD) @ ROXBURY TL	C	III	780	.	.	730	.
17	BYRON	50507	00320	IR 320 (WELD RD) W/O IR 2769 @ BR# 0768	C	III	.	.	.	90	.

2007 Maine Transportation Count Book

Oxford

TOWN	STATION	ROAD	LOCATION	TYPE	GROUP	AADT03	AADT04	AADT05	AADT06	AADT07
17 BYRON	63602	00320	IR 320 (WELD RD) NE/O SR 17 @ BR# 2176	C	III	210	.	.	180	.
17 BYRON	49801	00321	IR 321 N/O IR 320 (WELD RD) @ BR# 0769	C	III	.	.	.	50	.
17 BYRON	48605	00323	IR 323 (ROXBURY PD) S/O IR 324 @BR# 0651	C	II	40	.	.	50	.
17 BYRON	31207	00324	IR 324 (GARLAND PD) W/O SR 17 (SWIFT RV)	C	II	110	.	.	110	.
17 BYRON	48601	00324	IR 324(GARLAND PD RD) N/O IR 323@BR#2281	C	II	.	.	60	50	.
17 BYRON	63900	00324	IR 324 @ BEAVER BROOK @ BR# 0652	C	II	10
17 BYRON	43807	01073	IR 1073 W/O SR 17 @ BR# 0795	C	III	.	.	.	50	.
17 CANTON	57408	00396	IR 396 (CANTON PT RD) NW/O SR 140	C	I	1450	.	.	1160	.
17 CANTON	35905	00559	IR 559 (STAPLES HILL) S/O SR 108(TURNER)	C	I	450	.	.	460	.
17 CANTON	52906	00559	IR 559 (CHURCH ST) SW/O IR 557 @HRTFD TL	M	I	.	270	.	.	.
17 CANTON	62403	01043	IR 1043 (CROSS ST) E/O SR 108 @ BR#0753	C	I	.	.	.	130	.
17 CANTON	35904	0108X	SR 108(TURNER) SE/O IR 559(STAPLES HILL)	C	I	4970	.	.	4500	.
17 CANTON	51605	0108X	SR 108(TURNER ST) S/O IR405(JEWETT HILL)	C	I	4620	.	.	4310	.
17 CANTON	57308	0108X	SR 108 (PLEASANT ST) NW/O IR 2506(RIVER)	C	I	4340	.	.	4480	.
17 CANTON	62408	0108X	SR 108 (PLEASANT ST) NW/O IR 1043(CROSS)	C	I	4980	.	.	4170	.
17 CANTON	35800	0140X	SR 140 @ JAY TL	C	I	2430	.	.	2250	.
17 CANTON	41100	0140X	SR 140 (MAIN ST) @ HARTFORD TL	C	I	800	.	.	1210	.
17 CANTON	57406	0140X	SR 140 SW/O IR 396 (CANTON PT RD)	C	I	1700	.	.	1800	.
17 CANTON	62307	0140X	SR 140 (MAIN ST) W/O SR 108 (TURNER ST)	C	I	1450	.	.	1580	.
17 CANTON	62502	0140X	SR 140(SCHOOL ST) NE/O IR 1043(CROSS ST)	C	I	.	.	.	1750	.
17 CANTON	52106	02305	IR 2305(FARRAND HILL RD) SW/O SR 108 @TL	M	I	.	30	.	.	.
17 DENMARK	35005	00805	IR 805 (HANCOCK PD RD) S/O IR 1840 @ TL	C	II	.	.	330	.	390
17 DENMARK	55705	00805	IR 805(HANCOCK PD RD) S/O SR 117(E MAIN)	C	II	.	.	320	.	470
17 DENMARK	55708	00805	IR 805 (HIO RIDGE RD) NW/O SR 117	C	III	.	.	500	.	560
17 DENMARK	55908	00805	IR 805 (MTN RD) NW/O IR 813 (HIO RDG RD)	C	III	.	.	380	.	360
17 DENMARK	45603	0117X	SR 117 (E MAIN ST) E/O SR 160 (MAIN ST)	C	II	.	.	1720	.	1980
17 DENMARK	45604	0117X	SR 117(BULL RING RD) SE/O SR160(MAIN ST)	C	II	.	.	490	.	880
17 DENMARK	46905	0117X	SR 117 S/O IR 817 (TEACAP RD) @ HIRAM TL	C	II	.	.	280	.	330
17 DENMARK	55706	0117X	SR 117 SW/O IR 805 (HANCOCK PD RD)	C	II	.	.	1430	.	1700
17 DENMARK	45607	0160X	SR 160(MAIN ST) W/O SR 117(BULL RING RD)	C	II	.	.	1360	.	1570
17 DIXFIELD	00207	0002X	US 2/SR 17 W/O HIGH ST	C	II	10620
17 DIXFIELD	00303	0002X	US 2/SR 17 (MAIN ST) E/O SR 142(WELD RD)	C	ATR36907	8420
17 DIXFIELD	00403	0002X	US 2/SR 17 (MAIN ST) E/O THIRD ST	C	ATR36907	7300
17 DIXFIELD	02903	0002X	US 2/SR 17 (MAIN ST) E/O HALL HILL RD	C	ATR36907	5950	.	.	5630	.

2007 Maine Transportation Count Book

Oxford

	TOWN	STATION	ROAD	LOCATION	TYPE	GROUP	AADT03	AADT04	AADT05	AADT06	AADT07
17	DIXFIELD	35401	0002X	US 2/SR 17 N/O IR 396 (CANTON-DIXFIELD)	C	ATR36907	3900	.	.	4030	.
17	DIXFIELD	35407	0002X	US 2/SR 17 W/O IR 396 (CANTON-DIXFIELD)	C	ATR36907	5970	.	.	5410	.
17	DIXFIELD	56908	0017X	SR 17 NW/O IR 385 (SEVERY HILL RD)	C	ATR36907	750	.	.	780	.
17	DIXFIELD	35403	00396	IR 396(CANTON-DIXFIELD RD)E/O US 2/SR 17	C	I	2020	.	.	1560	.
17	DIXFIELD	35504	00396	IR 396 (CANTON PT RD) SE/O IR 391	C	I	1630	.	.	1420	.
17	DIXFIELD	00301	0142X	SR 142(WELD RD) N/O US 2/SR 17 (MAIN ST)	C	I	5020	.	.	5380	.
17	DIXFIELD	03002	0142X	SR 142 (WELD ST) NE/O MIDDLE SCHOOL DR	C	II+III	2050	.	.	1810	.
17	DIXFIELD	56808	0142X	SR 142 NW/O IR 375 (AVERILL)	C	II+III	1450	.	.	1500	.
17	DIXFIELD	02902	01430	HALL HILL RD NE/O US 2/SR 17 (MAIN ST)	C	I	1180
17	DIXFIELD	00201	01583	HIGH ST N/O US 2/SR 17 (MAIN ST)	C	I	710	.	.	580	.
17	FRYEBURG	00202	0005X	SR5/US302 (MAIN) NE/O SR 5/113(PORTLAND)	C	ATR39808	.	.	10220	.	9410
17	FRYEBURG	00204	0005X	SR 5/113 (PORTLAND ST) SE/O US 302(MAIN)	C	ATR62204	.	.	6200	.	5360
17	FRYEBURG	01004	0005X	SR 5/113 (PORTLAND ST) SE/O OXFORD ST	C	ATR62204	.	.	5880	.	5560
17	FRYEBURG	01702	0005X	SR 5 (MAIN ST) NE/O FAIRVIEW DR	C	ATR32203	.	.	4330	.	4520
17	FRYEBURG	01802	0005X	SR 5 (MAIN ST) NE/O US 302 (BRIDGTON RD)	C	ATR32203	.	.	5840	.	5670
17	FRYEBURG	42801	0005X	SR 5 (LOVELL RD) N/O IR 1915(BUZZELL DR)	C	ATR32203	.	.	2170	.	2300
17	FRYEBURG	42805	0005X	SR 5(LOVELL) S/O IR1914(STEPPING STONES)	C	ATR32203	.	.	3090	.	3260
17	FRYEBURG	45301	0005X	SR 5/113 N/O IR 702 (LYMAN DR)	C	ATR62204	.	.	4790	.	4360
17	FRYEBURG	45305	0005X	SR 5/113 S/O IR 702 (LYMAN DR)	C	ATR39808	.	.	4690	.	4250
17	FRYEBURG	64701	0005X	SR 5/113 N/O IR 2675(PUBLIC BOAT ACCESS)	C	ATR62204	.	.	4800	.	4880
17	FRYEBURG	42501	00665	IR 665(UNION HILL RD) N/O IR1318(HARBOR)	C	II	.	.	500	.	510
17	FRYEBURG	42503	00665	IR 665 (HARBOR RD) E/O IR 1318 @ BR#3694	C	II	.	.	730	.	690
17	FRYEBURG	42807	00671	IR 671 (FISH ST) W/O IR 1915(BUZZELL DR)	C	II	.	.	1050	.	1140
17	FRYEBURG	42403	00674	IR 674(HARBOR RD) E/O SR 113(N FRYEBURG)	C	II	.	.	520	.	480
17	FRYEBURG	64303	00674	IR 674(OLD RIVER RD) E/O IR1318@BR#0713	C	II	.	.	170	.	120
17	FRYEBURG	49905	00677	IR 677 (MCNEIL RD) S/O IR 665 @ BR#2708	C	II	.	.	310	.	330
17	FRYEBURG	34101	00681	IR 681(MENOTOMY RD) N/O US 302(BRIDGTON)	C	II	.	.	280	.	260
17	FRYEBURG	34105	00681	IR 681(BATTLEGROUND) S/O US 302(BRIDGTON)	C	II	.	.	290	.	270
17	FRYEBURG	47105	00687	IR 687 (PORTER RD) S/O SR 5/113	C	I	.	.	390	.	.
17	FRYEBURG	30104	00697	IR 697 (STANLEY HILL RD) SE/O US 302	C	I	.	.	130	.	120
17	FRYEBURG	45307	00702	IR 702 (LYMAN DR) W/O SR 5/113	C	I	.	.	80	.	90
17	FRYEBURG	00206	0113X	SR113/US302(MAIN) SW/O SR5/113(PORTLAND)	C	ATR39808	.	.	13290	.	12390
17	FRYEBURG	02102	0113X	SR 113/US 302 (MAIN ST) NE/O DRIFT RD	C	ATR39808	.	.	12140	.	12270
17	FRYEBURG	02308	0113X	SR 113 (RIVER ST) NW/O US 302 (MAIN ST)	T	II	.	.	2740	.	.

2007 Maine Transportation Count Book

Oxford

TOWN	STATION	ROAD	LOCATION	TYPE	GROUP	AADT03	AADT04	AADT05	AADT06	AADT07
17 FRYEBURG	03100	0113X	SR 113 (BRIDGE ST) @ NH SL	C	II	.	.	2490	.	2270
17 FRYEBURG	42401	0113X	SR 113(N FRYEBURG) N/O IR 672(S CHATHAM)	C	II	.	.	1010	.	1000
17 FRYEBURG	42405	0113X	SR 113(N FRYEBURG RD) S/O IR 674(HARBOR)	C	II	.	.	1120	.	1160
17 FRYEBURG	50106	0113X	SR 113 SW/O IR 683 (LITTLE CHATHAM) @ BR	C	II	.	.	1230	.	1290
17 FRYEBURG	64301	01318	IR 1318 (HARBOR RD) N/O IR 674 @ BR#3695	C	II	.	.	490	.	380
17 FRYEBURG	49707	01322	IR 1322 (WICKS RD) W/O IR 671 @ BR# 0778	C	II	.	.	10	.	.
17 FRYEBURG	00308	01427	SMITH ST NW/O MAPLE ST	C	I	.	.	480	.	440
17 FRYEBURG	01504	01472	LOVEWELL POND RD SE/O US 302 (BRIDGTON)	C	II	.	.	710	.	720
17 FRYEBURG	00503	01764	OXFORD ST E/O SMITH ST	C	I	.	.	490	.	500
17 FRYEBURG	00902	01765	PINE ST NE/O SR 5/113 (PORTLAND)	C	I	.	.	2480	.	2400
17 FRYEBURG	01506	01765	PINE ST SW/O LOVEWELL POND RD	C	I	1860
17 FRYEBURG	00806	01766	WARREN ST SW/O SR 5/113 (PORTLAND ST)	C	I	.	.	920	.	780
17 FRYEBURG	01904	01768	BRADLEY ST SE/O SR 5/US 302 (MAIN ST)	C	I	.	.	650	.	500
17 FRYEBURG	02204	01785	ELM ST SE/O SR 113/US 302 (MAIN ST)	C	I	520
17 FRYEBURG	00103	01860	MAPLE ST E/O US 302 (MAIN ST)	C	I	.	.	450	.	.
17 FRYEBURG	02908	01862	PLEASANT ST NW/O FAIR ST	C	I	.	.	180	.	140
17 FRYEBURG	45104	02009	IR 2009 (DENMARK RD) SE/O US 302	C	I	.	.	300	.	260
17 FRYEBURG	53107	02009	IR 2009 W/O IR1324 (PW) @ BR#1004	C	II	.	.	30	.	.
17 FRYEBURG	56004	02021	IR 2021 (HALEYTOWN RD) SE/O US 302(MAIN)	C	I	.	.	720	.	1010
17 FRYEBURG	64703	02675	IR 2675(PUBLIC BOAT ACCESS) E/O SR 5/113	C	II	.	.	70	.	60
17 FRYEBURG	01503	0302X	US 302 (BRIDGTON RD) E/O LOVEWELL PD RD	C	ATR39808	7300
17 FRYEBURG	01804	0302X	US 302 (BRIDGTON RD) SE/O SR 5 (MAIN ST)	C	ATR39808	.	.	6810	.	6290
17 FRYEBURG	02306	0302X	US 302 (MAIN ST) SW/O SR 113 (RIVER ST)	T	III	.	.	7980	.	.
17 FRYEBURG	02505	0302X	US 302 (MAIN ST) 0.22 MI S/O MAPLE @ CUL	C	ATR39808	.	.	10290	.	9970
17 FRYEBURG	45102	0302X	US 302 NE/O IR 2009 (HEMLOCK BRIDGE RD)	C	ATR39808	.	.	3800	.	3720
17 FRYEBURG	45106	0302X	US 302 SW/O IR 2009 (HEMLOCK BRIDGE RD)	C	ATR39808	.	.	3890	.	3960
17 FRYEBURG	56006	0302X	US 302(MAIN) SW/O IR 2021(HALEYTOWN)@SL	C	ATR39808	.	.	10050	.	10270
17 GILEAD	32902	0002X	US 2 NE/O SR 113	C	III	3350
17 GILEAD	33000	0002X	US 2 @ NH SL	C	III	3140	.	.	3100	.
17 GILEAD	56408	0002X	US 2 NW/O IR 1153 (BOG RD)	C	III	3410	.	.	3150	.
17 GILEAD	32904	0113X	SR 113 SE/O US 2	C	II	170	.	.	280	.
17 GRAFTON TWP	32000	0026X	SR 26 @ BR# 2212 @ MOTHER WALKER FALLS	C	ATR32208	790	.	.	880	.
17 GREENWOOD	32408	0026X	SR 26(MAIN ST) NW/O IR 356(E BETHEL) @TL	C	II	5020	.	.	5300	.
17 GREENWOOD	36807	0026X	SR 26 (MAIN ST) W/O IR 436 (GORE RD)	C	II	4860	.	.	4880	.

2007 Maine Transportation Count Book

Oxford

	TOWN	STATION	ROAD	LOCATION	TYPE	GROUP	AADT03	AADT04	AADT05	AADT06	AADT07
17	GREENWOOD	32401	00356	IR 356(E BETHEL RD) N/O SR26(MAIN ST)@TL	C	I	930	.	.	890	.
17	GREENWOOD	33305	0035X	IR 552(VERNON ST) S/O IR720(PARADISE RD)	C	II	550	.	.	850	.
17	GREENWOOD	36802	00436	IR 436 (GORE RD) NE/O SR 26 (MAIN ST)	C	II	450	.	.	450	.
17	GREENWOOD	63002	00437	IR 437(BIRD HILL RD) SW/O SR 26(MAIN ST)	M	I	.	.	.	240	.
17	GREENWOOD	36906	00451	IR 451(HOWE HILL) SW/O IR 455(GREENWOOD)	M	II	.	.	.	1030	.
17	GREENWOOD	36901	00455	IR 455(HOWE HILL RD) N/O IR 451 @BR#0679	C	II	1060	.	.	1130	.
17	GREENWOOD	37108	00455	IR 455(GREENWOOD) NW/O IR 478(PATCH MTN)	C	II	340	.	.	340	.
17	GREENWOOD	37205	00455	IR 455(GREENWOOD RD) S/O SR 219 @BR#5586	C	II	550	.	.	500	.
17	GREENWOOD	48105	00455	IR 455 (GREENWOOD RD) S/O IR 456	C	II	280	.	.	380	.
17	GREENWOOD	37308	00456	IR 456 NW/O SR 219	M	III	.	.	.	340	.
17	GREENWOOD	62704	00456	IR 456 (ROWE HILL RD) SE/O IR 1177	C	II	120	.	.	150	.
17	GREENWOOD	62800	00456	IR 456 (ROWE HILL RD) @ WOODSTOCK TL	M	II	.	.	.	300	.
17	GREENWOOD	54106	00464	IR 464 (RICHARDSON HOLLOW RD) SW/O IR467	C	II	180	.	.	160	.
17	GREENWOOD	62901	01129	IR 1129(JOHNYS BR RD) N/O SR 26@BR#5086	M	II	.	.	.	240	.
17	GREENWOOD	37203	0219X	SR 219 E/O IR 455 (GREENWOOD RD)	C	II	410	.	.	300	.
17	GREENWOOD	54102	0219X	SR 219 NE/O IR 464(YATES RD) @W PARIS TL	C	II	790	.	.	640	.
17	HANOVER	49107	0002X	US 2/SR 5 W/O IR 1907 (FERRY RD) (E JCT)	C	ATR32203	4600	.	.	4050	.
17	HANOVER	56608	01165	IR 1165 (HOWARD POND RD) NW/O IR 1166	C	II	260	.	.	320	.
17	HARTFORD	36106	00540	IR 540(STETSON) SW/O IR 553(DARRINGTON)	C	I	210	180	.	180	.
17	HARTFORD	36108	00553	IR 553 (DARRINGTON) NW/O IR 540(STETSON)	M	I	.	180	.	.	.
17	HARTFORD	52204	00555	IR 555 (CAMP RD) SE/O SR 140 (W JCT)	M	I	.	200	.	.	.
17	HARTFORD	38601	00559	IR 559 (CHURCH ST) N/O SR 219	M	I	.	260	.	.	.
17	HARTFORD	52700	00563	IR 563 (BERRY RD) @ TURNER TL	M	I	.	400	.	.	.
17	HARTFORD	52005	00565	IR 565 (TOWN FARM) S/O IR 540 (STETSON)	M	I	.	50	.	.	.
17	HARTFORD	57901	00565	IR 565 (TOWN FARM RD) N/O SR 140/219	M	I	.	160	.	.	.
17	HARTFORD	52508	00570	IR 570 (TUCKER RD) NW/O SR 140 (MAIN ST)	M	I	.	150	.	.	.
17	HARTFORD	38302	00584	IR 584 (RICKER HILL RD) NE/O SR 140	M	I	.	70	.	.	.
17	HARTFORD	51405	00590	IR 590 (PERRY RD) S/O SR 219(BEAR PD RD)	M	I	.	370	.	.	.
17	HARTFORD	51903	00590	IR 563 (MAHONEY RD) E/O IR 559 (CHURCH)	M	I	.	50	.	.	.
17	HARTFORD	58002	00995	IR 995 (PRATT HILL RD) NE/O SR 219	M	I	.	130	.	.	.
17	HARTFORD	36102	0140X	SR 140(MAIN) NE/O IR540(STETSON)@BR#3118	C	I	670	.	.	1000	.
17	HARTFORD	36105	0140X	SR 140 (MAIN ST) S/O IR 540 (STETSON RD)	C	I	520	.	.	1030	.
17	HARTFORD	38201	0140X	SR 140 (MAIN ST) N/O SR 219 (BEAR PD RD)	C	I	770	.	.	1040	.
17	HARTFORD	38206	0140X	SR 140/219(MAIN) SW/O IR1558(PW)WOOD ENT	C	I	1260	.	.	1540	.

2007 Maine Transportation Count Book

Oxford

	TOWN	STATION	ROAD	LOCATION	TYPE	GROUP	AADT03	AADT04	AADT05	AADT06	AADT07
17	HARTFORD	38305	0140X	SR 140(SUMMER RD) S/O IR584(RICKER HILL)	C	I	1190	.	.	1430	.
17	HARTFORD	38205	01461	IR 1461 (GURNEY HILL RD) S/O SR 219	M	I	.	60	.	.	.
17	HARTFORD	38203	0219X	SR 219(BEAR PD) E/O IR 1461(GURNEY HILL)	C	I+II	870	.	.	940	.
17	HARTFORD	38604	0219X	SR 219(BEAR PD RD) SE/O IR559(CHURCH ST)	C	I+II	940	.	.	990	.
17	HARTFORD	38700	0219X	SR 219 (BEAR POND RD) @ TURNER TL	C	I+II	1140	.	.	1350	.
17	HARTFORD	58004	0219X	SR 219 (BEAR PD) SE/O IR 995(PRATT HILL)	C	I+II	1030	.	.	1020	.
17	HARTFORD	52805	02283	IR 2283 (CAREY HILL RD) S/O IR 2531	M	I	.	80	.	.	.
17	HARTFORD	52305	02531	IR 2531(OLD RT 140) S/O SR 140/219(WJCT)	M	I	.	240	.	.	.
17	HEBRON	40302	00615	IR 615 (SODOM RD) NE/O IR 597 @ BR# 0707	C	I	80	.	.	100	.
17	HEBRON	40307	00618	IR 618 (STATION RD) W/O IR 615(SODOM RD)	C	I	480	.	.	620	.
17	HEBRON	40503	00618	IR 618(STATION RD) E/O IR 2236 @BR# 2800	C	I	660	.	.	720	.
17	HEBRON	40507	00618	IR 618(STATION RD) W/O IR2236(DEPOT CIR)	C	I	590
17	HEBRON	40608	00625	IR 625(GREENWOOD MT)NW/O SR 124@MINOT TL	C	I	230	.	.	250	.
17	HEBRON	61001	00627	IR 627 (STATION RD) N/O SR 119	C	I	720	.	.	850	.
17	HEBRON	40806	00635	IR 635(OXFORD RD) SW/O SR 119@BR#0709@TL	C	I	260	.	.	290	.
17	HEBRON	40700	0119X	SR 119 (WILLIAMS RD) @ MINOT TL	C	I	2610	.	.	2820	.
17	HEBRON	40803	0119X	SR 119 (PARIS RD) E/O IR 635 (OXFORD RD)	C	I	2830	.	.	3130	.
17	HEBRON	40807	0119X	SR 119 (PARIS RD) W/O IR 635 (OXFORD RD)	C	I	2660	.	.	2970	.
17	HEBRON	61004	0119X	SR 119(WILLIAMS RD) SE/O IR 627(STATION)	C	I	2640	.	.	3030	.
17	HEBRON	61008	0119X	SR 119(PARIS RD) NW/O IR 627(STATION RD)	C	I	2970	.	.	3350	.
17	HEBRON	40600	0124X	SR 124 @ MINOT TL	C	I	1200	.	.	1190	.
17	HEBRON	60906	0124X	SR 124 SW/O IR 1594 (ALLEN RD)	C	I	1320	.	.	1310	.
17	HIRAM	47003	0005X	SR 5/113/117 E/O SR 117 (MAIN ST)	C	II	.	.	3250	.	3040
17	HIRAM	47008	0005X	SR 5/113 NW/O IR 2029 (MTN VIEW AVE)	C	ATR62204	.	.	3050	.	3230
17	HIRAM	46807	00818	IR 818(NOTCH RD) W/O SR 5/113(PEQUAWKET)	C	I	.	.	220	.	240
17	HIRAM	53208	00818	IR 818(TEN MILE BK) NW/O IR 841@BR#0740	C	I	.	.	10	.	.
17	HIRAM	53206	00841	IR 841(NOTCH RD) SW/O IR818(TEN MILE BK)	C	I	.	.	210	.	.
17	HIRAM	34701	00849	IR 849 (DURGINTOWN) N/O IR 1341(S HIRAM)	C	I	.	.	460	.	380
17	HIRAM	47005	00853	IR 853(RIVER) S/O IR2029(MTN VIEW)(NJCT)	C	I	300
17	HIRAM	47001	0117X	SR 117 (MAIN ST) N/O SR 5/113/117	C	II	.	.	1350	.	1280
17	HIRAM	00103	01341	S HIRAM RD E/O SR 160 (BROWNFIELD RD)	C	I	.	.	2900	.	2880
17	HIRAM	00101	0160X	SR 160 (BROWNFIELD RD) N/O S HIRAM RD	C	II	.	.	2210	.	1920
17	HIRAM	33806	0160X	SR 160 (BROWNFIELD RD) SW/O IR 526	C	II	.	.	1040	.	960
17	HIRAM	47208	0160X	SR 160(BROWNFIELD) NW/O IR844(TRIPPTOWN)	C	II	.	.	1470	.	1430

2007 Maine Transportation Count Book

Oxford

TOWN	STATION	ROAD	LOCATION	TYPE	GROUP	AADT03	AADT04	AADT05	AADT06	AADT07
17 LINCOLN PLT	30403	0016X	SR 16(WILSONS MILLS) E/O IR 1553@BR#3515	C	III	370	.	.	350	.
17 LINCOLN PLT	35300	0016X	SR 16 (WILSONS MILLS RD) @ MAGALLOWAY TL	C	III	440	.	.	430	.
17 LOVELL	43101	0005A	OLD STAGE RD N/O SR 5 (MAIN ST)	C	II+III	250	.	280	.	240
17 LOVELL	41800	0005X	SR 5 @ STONEHAM TL	C	ATR32203	980	.	1020	.	1020
17 LOVELL	41906	0005X	SR 5 SW/O IR 740 (SLAB CITY RD)	C	ATR32203	1310	.	.	.	1360
17 LOVELL	42901	0005X	SR 5 N/O IR 753 (CHRISTIAN HILL RD)	C	ATR32203	2550	.	.	.	2790
17 LOVELL	42906	0005X	SR 5 (MAIN ST) SW/O SR 93 (LOVELL RD)	C	ATR32203	2710	.	2600	.	2740
17 LOVELL	43104	0005X	SR 5(MAIN ST) SE/O IR 746(OLD WATERFORD)	C	ATR32203	2600	.	2610	.	2650
17 LOVELL	43108	0005X	SR 5(MAIN ST) NW/O IR 746(OLD STAGE)SJCT	C	ATR32203	2350	.	2330	.	2420
17 LOVELL	43301	0005X	SR 5 N/O IR 1200 (PLEASANT POINT RD)	C	ATR32203	1930	.	1990	.	2140
17 LOVELL	43505	0005X	SR 5 S/O IR 742 (SABATTUS RD)	C	ATR32203	1630	.	1720	.	1910
17 LOVELL	50207	00665	IR 665 (HARBOR RD) W/O 751 @ BR# 3582	C	II	.	.	680	.	610
17 LOVELL	42108	00675	IR 675(FOXBORO RD) NW/O IR 1190(W LOVELL	C	II	.	.	270	.	290
17 LOVELL	43204	00675	IR 675(W LOVELL) SE/O IR1198(HATCH HILL)	C	III	760	.	820	.	.
17 LOVELL	50301	00675	IR 675 (FOXBORO RD) N/O IR 676 (NEW RD)	C	II	.	.	100	.	100
17 LOVELL	50307	00676	IR 676 (NEW RD) W/O IR 675 (FOXBORO RD)	C	II	.	.	110	.	130
17 LOVELL	41902	00740	IR 740 (SLAB CITY RD) NE/O SR 5	C	III	230
17 LOVELL	43502	00742	IR 742 (SABATTUS RD) NE/O SR 5	C	I	210	.	210	.	330
17 LOVELL	43404	00744	IR 744 (EASTMAN HILL RD) SE/O SR 5	C	III	130
17 LOVELL	43102	00746	IR 746(OLD WATERFORD RD) NE/O SR 5(MAIN)	C	II	240	.	210	.	260
17 LOVELL	43602	00746	IR 746 NE/O IR 744 (EASTMAN HILL RD)	C	III	120
17 LOVELL	43004	00793	IR 793 (KNIGHTS HILL RD) SE/O SR 93 @ TL	C	III	640
17 LOVELL	42903	0093X	SR 93 (LOVELL RD) E/O SR 5 @ BR# 0787	C	III	1520	.	1520	.	1600
17 LOVELL	43002	0093X	SR 93 NE/O IR 793 (KNIGHTS HILL RD) @ TL	C	III	680	.	600	.	600
17 LOVELL	42102	01190	IR 1190 (W LOVELL) NE/O IR 675 (FOXBORO)	C	III	200	.	110	.	190
17 LOWER CUPSUPTIC TWP	50700	0016X	SR 16 (WILSONS MILLS RD) @ BR# 3541	C	III	460	.	.	460	.
17 MAGALLOWAY PLT	30507	0016X	SR 16 (DAM RD) W/O IR 1105 @ NH SL	C	III	560	.	.	620	.
17 MEXICO	00100	0002X	US 2 (MAIN ST) @ RUMFORD TL	C	I	10740	.	.	11570	.
17 MEXICO	00604	0002X	US 2/SR 17 (MAIN ST) SE/O US 2 (MAIN ST)	C	I	10250
17 MEXICO	05004	0002X	US 2/SR 17 (MAIN ST) SE/O MITCHELL ST	C	I	10040
17 MEXICO	05304	0002X	US 2/SR 17(RIVER RD) SE/O SOUTH MAINE ST	C	I	9520	.	.	8340	.
17 MEXICO	06604	0002X	US 2/SR 17 (RIVER RD) SE/O WATER ST # 1	C	I	12680	.	.	12670	.
17 MEXICO	06704	0002X	US 2/SR 17 (RIVER RD) SE/O VETERANS ST	C	I	7275
17 MEXICO	06904	0002X	US 2/SR 17 (RIVER RD) SE/O HIGHLAND TERR	C	I	11490

2007 Maine Transportation Count Book

Oxford

TOWN	STATION	ROAD	LOCATION	TYPE	GROUP	AADT03	AADT04	AADT05	AADT06	AADT07
17 MEXICO	06908	0002X	US 2/SR 17 (RIVER RD) NW/O HIGHLAND TERR	C	I	10870
17 MEXICO	20007	0002X	US 2/SR 17 W/O IR 378 (HAMMOND FERRY RD)	C	I	10820	.	.	9800	.
17 MEXICO	00601	0017X	SR 17 (ROXBURY) N/O US 2 (MAIN ST)	C	I	6670	.	.	5900	.
17 MEXICO	03108	0017X	SR 17 (ROXBURY RD) NW/O SUMMIT ST @ CUL	C	II	2960	.	.	2360	.
17 MEXICO	40002	0017X	SR 17(ROXBURY RD NE/O IR1066(BLACK BR RD	C	II	2160	.	.	2080	.
17 MEXICO	40006	0017X	SR17(ROXBURY RD) SW/O IR1066(BLACK BR RD	C	II	2420
17 MEXICO	04501	00373	BACK KINGDOM RD N/O HIGHLAND TER	C	I	250	.	.	560	.
17 MEXICO	20005	00378	IR 378 (HAMMOND FERRY RD) S/O US 2/SR 17	C	I	5860	.	.	5380	.
17 MEXICO	06802	01049	RICHARDS AVE NE/O US 2/SR 17 (RIVER RD)	C	I	250	.	.	300	.
17 MEXICO	00204	01050	HARLOW HILL RD SE/O SANDERS RD	C	I	.	.	.	3370	.
17 MEXICO	00903	01050	HARLOW HILL RD E/O SR 17 (ROXBURY RD)	C	I	2900
17 MEXICO	06901	01050	HIGHLAND TERR N/O SR 2/17 (RIVER RD)	C	I	1460	.	.	1410	.
17 MEXICO	40007	01066	IR 1066(BLACK BR RD) W/O SR 17 @BR# 3625	C	I	510	.	.	490	.
17 MEXICO	05408	02800	SOUTH MAINE ST NW/O OXFORD ST	C	I	560	.	.	630	.
17 MEXICO	06603	02803	WATER ST # 1 E/O US 2/SR 17 (RIVER RD)	C	I	560
17 MEXICO	05206	02807	HILL ST SW/O GRANITE ST	C	I	170
17 MEXICO	05003	02810	MITCHELL ST E/O US 2/SR 17 (MAIN ST)	C	I	1120
17 MEXICO	00202	02823	SANDERS RD NE/O HARLOW HILL RD	C	I	.	.	.	40	.
17 MEXICO	00308	02841	OSGOOD AVE NW/O US 2 (MAIN ST)	C	I	2010	.	.	1570	.
17 MEXICO	06706	02842	VETERANS ST SW/O US 2/SR 17 (RIVER RD)	C	I	7280	.	.	7630	.
17 NEWRY	32203	0002X	US 2/SR 5 E/O SR 26	A	ATR32203	3280	3300	3240	3290	3240
17 NEWRY	32205	0002X	US 2/SR 5/26 S/O SR 26 @ BR# 2055	C	ATR34304	5910	.	.	5900	.
17 NEWRY	32208	0026X	SR 26 NW/O US 2/SR 5	A	ATR32208	980	1020	990	1000	990
17 NEWRY	32108	0026X	SR 26 NW/O IR 1124 (BRANCH RD)	C	ATR32203	870
17 NEWRY	38004	00310	IR 310(SUNDAY RV RD) SE/O IR 314@BR#5690	C	ATR34304	3570	.	.	2340	.
17 NEWRY	38500	00310	IR 310 (SUNDAY RIVER RD) @ BR# 3167	C	ATR34304	270	.	.	290	.
17 NORWAY	00406	0026X	SR 26 (FAIR ST) SW/O SR 26/117(PARIS ST)	C	I	13380	.	.	12490	.
17 NORWAY	00505	0026X	SR 26 (FAIR ST) S/O GREEN ST	C	I	13220	.	.	12680	.
17 NORWAY	00705	0026X	SR 26(MAIN ST) S/O SR26(FAIR ST)@BR#2802	C	I	19620	.	.	18350	.
17 NORWAY	00808	0026X	SR 26 (MAIN ST) NW/O BARTLETT ST	C	I	17890	.	.	18040	.
17 NORWAY	58908	00475	IR 475(GREENWOOD) NW/O SR 118(WATERFORD)	C	II	1660	.	.	1500	.
17 NORWAY	36804	00503	IR 503 (OLD STAGE) SE/O SR 117(HARRISON)	C	I	.	.	.	720	.
17 NORWAY	45803	00504	IR 504 (SODOM RD) E/O IR 2203 @ BR# 0685	C	III	200	.	.	190	.
17 NORWAY	47302	00504	IR 504(SODOM RD) NE/O IR503(COUNTRY CLUB	C	II	430	.	.	430	.

2007 Maine Transportation Count Book

Oxford

TOWN	STATION	ROAD	LOCATION	TYPE	GROUP	AADT03	AADT04	AADT05	AADT06	AADT07
17 NORWAY	02701	00505	CROCKETT RIDGE RD N/O SR117/118(LAKE RD)	C	II	.	.	.	1140	.
17 NORWAY	39605	00505	IR 505 (CROCKETT RDG) S/O IR 479 (ROUND)	C	II	.	.	.	570	.
17 NORWAY	39804	00507	IR 507(KAHKONEN) SE/O IR 510(PIKES HILL)	C	I	.	.	.	1150	.
17 NORWAY	39808	00507	IR 507(ROBERTS RD) NW/O IR510(PIKES HILL	C	I	.	.	.	300	.
17 NORWAY	02105	00510	PIKES HILL ST S/O SR 117/118(MAIN ST)@BR	C	I	1250	.	.	760	.
17 NORWAY	02606	00510	PIKES HILL RD SW/O ORCHARD ST @ CUL	C	I	930	.	.	430	.
17 NORWAY	39806	00510	IR 510(PIKES HILL) SW/O IR 507(KAHKONEN)	C	I	.	.	.	960	.
17 NORWAY	00101	00535	ALPINE ST N/O GARY ST	C	I	2420	.	.	2080	.
17 NORWAY	00401	00535	ALPINE ST N/O SR 26/117 (MAIN ST)	C	I	.	.	.	2990	.
17 NORWAY	53504	00643	IR 643 (GORE) SE/O SR 117 @ OTISFIELD TL	C	I	970	.	.	1000	.
17 NORWAY	01802	00900	COTTAGE ST NE/O PEARL ST	C	I	.	.	.	1770	.
17 NORWAY	00407	0117X	SR 117 (PARIS ST) W/O SR 26 (FAIR ST)	C	I	.	.	.	8380	.
17 NORWAY	01003	0117X	SR 117 (PARIS ST) E/O MAIN ST	C	I	.	.	.	7040	.
17 NORWAY	01008	0117X	SR117/118 (MAIN ST) NW/O SR117(PARIS ST)	C	I	13350	.	.	11610	.
17 NORWAY	01704	0117X	SR 117/118 (MAIN ST) SE/O COTTAGE ST	C	I	.	.	.	11620	.
17 NORWAY	01708	0117X	SR 117/118 (MAIN ST) NW/O COTTAGE ST	C	I	.	.	.	11700	.
17 NORWAY	02107	0117X	SR 117/118 (MAIN ST) W/O PIKES HILL ST	C	I	.	.	.	10440	.
17 NORWAY	02406	0117X	SR 117/118 (LAKE RD) SW/O WATER ST	C	II	.	.	.	9310	.
17 NORWAY	02707	0117X	SR 117/118 (LAKE RD) W/O CROCKETT RIDGE	C	II	.	.	.	8350	.
17 NORWAY	36806	0117X	SR 117 (HARRISON) SW/O IR 503(OLD STAGE)	C	II	.	.	.	3400	.
17 NORWAY	39703	0117X	SR 117/118(LAKE RD) E/O SR 117(HARRISON)	C	II	.	.	.	8350	.
17 NORWAY	39705	0117X	SR 117(HARRISON RD) S/O SR118(WATERFORD)	C	II	3230	.	.	3500	.
17 NORWAY	35208	0118X	SR 118(WATERFORD RD) NW/O IR 512(ASHTON)	C	II	5560	.	.	4920	.
17 NORWAY	39707	0118X	SR 118(WATERFORD) W/O SR117(HARRISON)@BR	C	II	.	.	.	5630	.
17 NORWAY	58600	0118X	SR 118 (WATERFORD RD) @ WATERFORD TL	C	II	3000	.	.	2800	.
17 NORWAY	58904	0118X	SR 118(WATERFORD) SE/O IR 475(GREENWOOD)	C	II	5330	.	.	4620	.
17 NORWAY	58907	0118X	SR 118 (WATERFORD) W/O IR 475(GREENWOOD)	C	II	3680	.	.	3290	.
17 NORWAY	02208	01609	PLEASANT ST NW/O SR 117/118 (MAIN ST)	C	I	900	.	.	1030	.
17 NORWAY	02801	01609	PLEASANT ST N/O HAYDEN AVE	C	I	950	.	.	1060	.
17 NORWAY	03406	01617	LYNN ST SW/O MILL ST @ BR# 0797	C	I	.	.	.	830	.
17 NORWAY	00708	01622	MAIN ST NW/O SR 26 (FAIR ST)	C	I	6570	.	.	6100	.
17 NORWAY	01004	01622	MAIN ST SE/O SR 117 (PARIS ST)	C	I	.	.	.	6080	.
17 NORWAY	01108	01624	WINTER ST NW/O SR 117 (PARIS ST)	C	I	1470	.	.	940	.
17 NORWAY	03908	01624	WINTER ST NW/O SR 26 (FAIR ST)	C	I	1930	.	.	1660	.

2007 Maine Transportation Count Book

Oxford

TOWN	STATION	ROAD	LOCATION	TYPE	GROUP	AADT03	AADT04	AADT05	AADT06	AADT07
17 NORWAY	00508	01625	GREEN ST NW/O SR 26 (FAIR ST)	C	I	600	.	.	640	.
17 NORWAY	01504	01626	BEAL ST SE/O MARSTON ST	C	I	.	.	.	3140	.
17 NORWAY	01804	01626	BEAL ST SE/O COTTAGE ST	C	I	.	.	.	2090	.
17 NORWAY	03407	01626	BEAL ST W/O LYNN ST @ BR# 0796	C	I	.	.	.	2500	.
17 NORWAY	00806	01630	BARTLETT ST SW/O SR 26 (MAIN ST)	C	I	610	.	.	590	.
17 NORWAY	01808	01672	PEARL ST NW/O COTTAGE ST	C	I	.	.	.	1060	.
17 NORWAY	02101	01743	WHITMAN ST N/O SR 117/118 (MAIN ST)	C	I	760
17 NORWAY	04107	02622	TOWN & COUNTRY DR W/O SR 26 (MAIN ST)	C	I	670	.	.	620	.
17 OTISFIELD	53604	00643	IR 643(GORE RD) SE/O IR3622(HIDDEN LAKE)	C	I	950	.	950	.	.
17 OTISFIELD	53608	00643	IR 643(GORE RD) NW/O IR3622(HIDDEN LAKE)	C	I	1100	.	1120	.	.
17 OTISFIELD	50000	0121X	SR 121 @ OXFORD TL	C	ATR41207	1910	.	1520	.	1790
17 OTISFIELD	54502	0121X	SR 121 NE/O IR 3628 (RAYVILLE RD)	C	ATR41207	1550	.	1380	.	1540
17 OTISFIELD	54506	0121X	SR 121 SW/O IR 3628 (RAYVILLE RD)	C	I	.	.	1250	.	.
17 OTISFIELD	54908	0121X	SR 121 NW/O IR 3617 (POWHATTAN RD)	C	ATR41207	1470	.	1280	.	1460
17 OTISFIELD	55002	0121X	SR 121 NE/O IR 3616 (BOLSTERS MILL RD)	C	ATR41207	1280	.	1060	.	1200
17 OTISFIELD	55004	0121X	SR 121 SE/O IR 3631 (OAK HILL RD)	C	ATR41207	1280	.	.	.	1510
17 OTISFIELD	54206	03616	IR 3616 (BIG HILL RD) SW/O IR 3633	C	I	670
17 OTISFIELD	55008	03616	IR 3616 (BOLSTERS MILL RD) NW/O SR 121	C	I	880	.	840	.	910
17 OTISFIELD	54904	03617	IR 3617 (POWHATTAN RD) SE/O SR 121	C	III	.	.	510	.	.
17 OTISFIELD	58108	03617	IR 3617 (POWHATTAN) NW/O IR 3628 (COON)	C	III	420
17 OTISFIELD	53606	03622	IR 3622(HIDDEN LAKE RD) SW/O IR643(GORE)	C	I	350	.	370	.	.
17 OTISFIELD	54508	03628	IR 3628 (RAYVILLE RD) NW/O SR 121	C	I	.	.	240	.	.
17 OXFORD	41204	0026X	SR 26/121 (MAIN ST) SE/O SR 121 (N JCT)	A	ATR41204	11990	11720	12290	12730	12560
17 OXFORD	41004	0026X	SR 26 SE/O IR 629 (OXFORD ST)	C	I	17270	.	.	16850	.
17 OXFORD	41008	0026X	SR 26 NW/O IR 629 (OXFORD ST)	C	I	.	.	.	15940	.
17 OXFORD	41208	0026X	SR 26 NW/O SR 121 (N JCT)	T	I	11320
17 OXFORD	41404	0026X	SR 26 SE/O SR 121 @ BR# 2921 (S JCT)	C	I	6760
17 OXFORD	47704	0026X	SR 26 SE/O Z0045 (HANNAFORD ENT)	C	I	.	.	.	16740	.
17 OXFORD	47708	0026X	SR 26 NW/O HANNAFORD ENT	C	I	.	.	.	17980	.
17 OXFORD	52404	0026X	SR 26 (MAIN ST) SE/O IR 656(NUMBER 6 RD)	T	I	.	.	10030	.	.
17 OXFORD	52408	0026X	SR 26 (MAIN ST) NW/O IR 656(NUMBER 6 RD)	T	I	.	.	10600	.	.
17 OXFORD	62108	0026X	SR 26 NW/O IR 869 (FORE ST)	C	I	.	.	.	14210	.
17 OXFORD	51304	00507	IR 507(WEBBER BK RD) SE/O IR 642(POTTLE)	C	I	.	.	.	1030	.
17 OXFORD	51308	00507	IR 507(WEBBER BK RD) NW/O IR 642(POTTLE)	C	I	.	.	.	1390	.

2007 Maine Transportation Count Book

Oxford

	TOWN	STATION	ROAD	LOCATION	TYPE	GROUP	AADT03	AADT04	AADT05	AADT06	AADT07
17	OXFORD	59808	00507	IR 507(WEBBER BK) NW/O IR645(ALLEN HILL)	C	I	.	.	.	370	.
17	OXFORD	41002	00629	IR 629 (OXFORD ST) NE/O SR 26	C	I	2480	.	.	2250	.
17	OXFORD	48702	00635	IR 635(HEBRON)NE/O IR 647(SAM ROWE HILL)	C	I	480
17	OXFORD	48706	00635	IR 635 (HEBRON) SW/O IR 647 (E OXFORD)	C	I	610
17	OXFORD	44902	00642	IR 642(POTTLE) NE/O IR645(COLD WATER BK)	C	I	4760	.	.	4110	.
17	OXFORD	44906	00642	IR 642(POTTLE) SW/O IR645(COLD WATER BK)	C	I	.	.	.	2410	.
17	OXFORD	51302	00642	IR 642(POTTLE RD) NE/O IR507(WEBBER BK)	C	I	.	.	.	2120	.
17	OXFORD	53307	00643	IR 643 (GORE RD) W/O SR 121	C	I	1110
17	OXFORD	44901	00645	IR 645(COLD WATER BK) N/O IR 642(POTTLE)	C	I	110
17	OXFORD	44905	00645	IR 645(COLD WATER BK) S/O IR 642(POTTLE)	C	I	2290	.	.	1810	.
17	OXFORD	59805	00645	IR 645(ALLEN HILL) S/O IR 507(WEBBER BK)	C	I	.	.	.	1430	.
17	OXFORD	48704	00647	IR 647(SAM ROWE HILL)SE/O IR 635(HEBRON)	C	I	230
17	OXFORD	48708	00647	IR 647 (E OXFORD) NW/O IR 635(HERBON)	C	I	420
17	OXFORD	48808	00647	IR 647 (E OXFORD) NW/O IR 656 (NO 6)	C	I	500
17	OXFORD	62105	00649	IR 649 (SKEETFIELD RD) S/O SR 26	C	I	.	.	.	2590	.
17	OXFORD	41507	00654	IR 654 (RABBIT VALLEY RD) W/O SR 26	C	III	570
17	OXFORD	58304	00654	IR 654 (RABBIT VALLEY) SE/O IR 657(KING)	C	II	710
17	OXFORD	48806	00656	IR 656 (NO 6) SW/O IR 647 (E OXFORD)	C	I	150
17	OXFORD	52401	00656	IR 656 (NUMBER 6 RD) N/O SR 26 (MAIN ST)	T	I	.	.	300	.	.
17	OXFORD	58205	00657	IR 657 (KING ST) S/O SR 121 @ BR# 5552	C	II	2560	.	1980	.	2400
17	OXFORD	58305	00657	IR 657(KING ST) S/O IR654(RABBIT VALLEY)	C	II	.	.	1180	.	910
17	OXFORD	58308	00657	IR 657 (KING) NW/O IR 654(RABBIT VALLEY)	C	I	1370
17	OXFORD	61604	00657	IR 657 (KING ST) SE/O IR 890 (KOHUT) @TL	C	II	810	.	770	.	660
17	OXFORD	52406	00893	IR 893 (ROLLER RINK RD) SW/O SR 26(MAIN)	T	I	.	.	980	.	.
17	OXFORD	41207	0121X	SR 121 W/O SR 26 (MAIN ST) (N JCT)	A	ATR41207	2770	2780	2890	2990	3000
17	OXFORD	41403	0121X	SR 121 E/O IR 635 @ BR# 2037	C	I+II	6300
17	OXFORD	58202	0121X	SR 121 NE/O IR 657 (KING ST) @ BR# 3738	C	II	5540	.	4990	.	.
17	OXFORD	58207	0121X	SR 121 W/O IR 657 (KING ST)	C	II	4040	.	3930	.	.
17	OXFORD	41308	01447	IR 1447 NW/O SR 121	C	I	1250
17	OXFORD	41202	01473	IR 1473 (STATION RD) NE/O SR 26	C	I	1180	.	1080	.	1200
17	PARIS	00403	00026X	SR 26/117 (PARIS ST) E/O ALPINE ST	C	I	19560	.	.	17690	.
17	PARIS	00206	0026X	SR 26/117 (MAIN ST) SW/O GARY ST	C	I	18050	.	.	17860	.
17	PARIS	01301	0026X	SR 26 N/O PORTER @LITTLE ANDROSCOGGIN RV	C	I+II	7680	.	.	7400	.
17	PARIS	01508	0026X	SR 26 (PARK ST) NW/O MAPLE ST	C	I	13930	.	.	12240	.

2007 Maine Transportation Count Book

County

Oxford

TOWN	STATION	ROAD	LOCATION	TYPE	GROUP	AADT03	AADT04	AADT05	AADT06	AADT07	
17	PARIS	01606	0026X	SR 26/117 (MAIN ST) SW/O CHURCH ST	C	I	15910	.	.	14570	.
17	PARIS	03305	0026X	SR 26/117 (MAIN ST) S/O PINE ST	C	I	18030	.	.	17410	.
17	PARIS	39405	0026X	SR 26 S/O IR 913 (PARIS HILL RD)	C	II	6370	.	.	6250	.
17	PARIS	60208	0026X	SR 26 NW/O IR 526(JACKSON XING RD) @ TL	C	II	6270	.	.	6080	.
17	PARIS	01108	00523	HIGH ST NW/O PROSPECT AVE	C	I	.	.	.	2540	.
17	PARIS	01201	00523	HIGH ST N/O NICHOL ST	C	I	2600
17	PARIS	01408	00523	HIGH ST NW/O SR 26 (PARK ST)	C	I	2410	.	.	2590	.
17	PARIS	40104	00523	IR 523(HIGH ST) SE/O IR 536(HATHAWAY RD)	C	I	.	.	.	2000	.
17	PARIS	60201	00529	IR 529(STEARNS HILL) N/O SR26@W PARIS TL	C	I	320	.	.	260	.
17	PARIS	03508	00535	ELM HILL ST NW/O COTTAGE ST	C	I	1850	.	.	1780	.
17	PARIS	03601	00535	ELM HILL ST N/O NICHOL ST	C	I	1280	.	.	1200	.
17	PARIS	01207	00538	NICHOL ST W/O HIGH ST @ RR CROSSING	C	I	1570	.	.	1610	.
17	PARIS	03604	00538	NICHOL ST SE/O ELM HILL ST	C	I	870	.	.	810	.
17	PARIS	61402	00594	IR 594 (MT MICA RD) NE/O IR 599	C	I	600	.	.	420	.
17	PARIS	61403	00599	IR 599 (CHRISTIAN RIDGE RD) E/O IR 594	C	I	220
17	PARIS	01804	00629	OXFORD ST SE/O SR 117/119 (MAIN ST)	C	I	2460	.	.	2230	.
17	PARIS	02505	00647	E OXFORD RD S/O SR 119 (HEBRON RD)	C	I	920	.	.	800	.
17	PARIS	02208	00861	HILL RD NW/O CROSS ST	C	I	930	.	.	940	.
17	PARIS	03505	00900	COTTAGE ST S/O ELM HILL ST	C	I	1090	.	.	1000	.
17	PARIS	02002	0117X	SR 117(BUCKFIELD RD)NE/O SR 119(HEBRON)	C	I	3430	.	.	3780	.
17	PARIS	02403	0117X	SR 117 (BUCKFIELD RD) E/O EMERY AVE	C	I	2790
17	PARIS	03704	0117X	SR 117/119 (MAIN ST) SE/O BARROWS ST@ BR	C	I	8290	.	.	7970	.
17	PARIS	40206	0117X	SR 117 SW/O IR 599(CHRISTIAN RDG RD)WJCT	C	I	1550	.	.	1910	.
17	PARIS	61202	0117X	SR 117 NE/O IR 601(HOOPER LEDGE RD)	C	I	2240	.	.	2170	.
17	PARIS	02003	0119X	SR 119(HEBRON RD)E/O SR 117(BUCKFIELD)	C	I	4410	.	.	4110	.
17	PARIS	02504	0119X	SR 119 (HEBRON RD) SE/O E OXFORD RD	C	I	.	.	.	3270	.
17	PARIS	02801	01636	CHARLES ST N/O SR 26/117 (MAIN ST)	C	I	430	.	.	540	.
17	PARIS	00103	01637	GARY ST E/O ALPINE ST	C	I	1050	.	.	690	.
17	PARIS	01302	01871	PARIS HILL RD NE/O SR 26(PARK ST)@BR2645	C	I	2650	.	.	2480	.
17	PARIS	02301	01871	PARIS HILL RD N/O HILL ST	C	I	2470	.	.	2400	.
17	PERU	00403	00415	PLEASANT ST E/O DICKVALE RD	C	I	270
17	PERU	00806	00416	MAIN ST SW/O VETERANS RD	C	I	2330	.	.	2330	.
17	PERU	00504	00417	RIDGE RD SE/O DICKVALE RD @ BR# 5432	C	I	860	.	.	910	.
17	PERU	35606	00543	IR 543 (GREEN WOODS RD) SW/O SR 108	C	II	1180	.	.	1140	.

2007 Maine Transportation Count Book

Oxford

TOWN	STATION	ROAD	LOCATION	TYPE	GROUP	AADT03	AADT04	AADT05	AADT06	AADT07
17 PERU	57107	00543	IR 543 (WORTHLEY POND RD) W/O IR 1037	C	III	670
17 PERU	00204	0108X	SR 108 (CANTON RD) SE/O MAIN ST	C	I	5840	.	.	5680	.
17 PERU	00708	0108X	SR 108 (RUMFORD RD) NW/O VETERANS RD	C	I	3140	.	.	3460	.
17 PERU	58502	02506	IR 2506 (RIVER RD) NE/O SR 108 @ BR#2640	C	I	.	.	.	90	.
17 PORTER	00402	00105	MAIN ST NE/O SCHOOL ST	C	I	.	.	540	.	470
17 PORTER	00607	0025X	SR 25/160(OSSIPEE TR) W/O SR 160(BRIDGE)	C	II	.	.	4060	.	3500
17 PORTER	47603	0025X	SR 25/160 E/O IR 829 (FIRST COUNTY RD)	C	II	.	.	3040	.	2730
17 PORTER	47806	0025X	SR 25 (OSSIPEE TR) SW/O IR 705(BICKFORD)	C	II+III	2050
17 PORTER	47900	0025X	SR 25 @ NH SL	C	II+III	.	.	2640	.	2240
17 PORTER	53701	00685	IR 685 (COLCORD PD RD) N/O IR 829	C	I	.	.	380	.	310
17 PORTER	34807	00705	IR 705(BICKFORD) W/O IR 822(DANAWEEK)@SL	C	I	.	.	50	.	.
17 PORTER	47808	00705	IR 705 (BICKFORD POND RD) NW/O SR 25	C	I	.	.	280	.	180
17 PORTER	47408	00814	IR 814 (PORTERFIELD RD) NW/O SR 160	C	I	.	.	430	.	470
17 PORTER	49407	00814	IR 814 (ROUNDS RD) W/O IR 2131 @ BR	C	I	.	.	70	.	50
17 PORTER	46702	00818	IR 818 (TEN MILE BK RD) NE/O SR 160	C	I	.	.	20	.	.
17 PORTER	46706	00818	IR 818 (SARA BRIDGE RD) SW/O SR 160	C	I	.	.	30	.	.
17 PORTER	49302	00823	IR 823 (DAM RD) NE/O IR 705 @ BR# 0741	C	I	.	.	70	.	60
17 PORTER	47601	00829	IR 829 (FIRST COUNTY RD) N/O SR 25/160	C	I	.	.	270	.	200
17 PORTER	47501	00830	IR 830 (SPEC POND RD) N/O IR 833	C	I	.	.	220	.	190
17 PORTER	01607	00832	CHAPEL ST W/O SCHOOL ST	C	I	.	.	150	.	150
17 PORTER	00308	00833	SCHOOL ST NW/O SR 160 (BRIDGE ST)	C	I	.	.	1100	.	960
17 PORTER	00408	00833	SCHOOL ST NW/O MAIN ST	C	I	.	.	1230	.	1120
17 PORTER	01708	00833	SPEC POND RD NW/O ENDFIELD ST	C	I	.	.	610	.	500
17 PORTER	00901	01343	PINE ST N/O SR 160 (MAIN ST)	C	I	.	.	370	.	330
17 PORTER	01406	01344	MOUNTAIN VIEW AVE SW/O ENDFIELD ST	C	I	.	.	130	.	100
17 PORTER	00508	01347	HIGH ST NW/O SR 160 (MAIN ST)	C	I	.	.	270	.	200
17 PORTER	00202	01348	RIVER ST NE/O SR 160 (BRIDGE ST)	C	I	.	.	240	.	170
17 PORTER	00102	01384	SUMMER ST NE/O SCHOOL ST	C	I	.	.	190	.	210
17 PORTER	00201	0160X	SR 160 (BRIDGE ST) N/O RIVER ST	C	I	.	.	3050	.	2360
17 PORTER	00502	0160X	SR 160 (MAIN ST) NE/O SR 160 (BRIDGE ST)	C	I	.	.	2880	.	2500
17 PORTER	00903	0160X	SR 160 (MAIN ST) E/O PINE ST @ TL	C	I	.	.	3380	.	2830
17 PORTER	46701	0160X	SR 160 N/O IR 818 (TEN MILE BK RD)	C	II	.	.	890	.	820
17 PORTER	46705	0160X	SR 160 (BROWNFIELD RD) S/O IR 818	C	II	900
17 PORTER	49401	02131	IR 2131(PORTERFIELD) N/O IR 814 @BR#1368	C	I	.	.	30	.	.

2007 Maine Transportation Count Book

Oxford

	TOWN	STATION	ROAD	LOCATION	TYPE	GROUP	AADT03	AADT04	AADT05	AADT06	AADT07
17	ROXBURY	31501	0017X	SR 17(ROXBURY) N/O IR1068(FRYE CROSSOVER	C	III	1080	.	.	980	.
17	ROXBURY	31505	0017X	SR 17(ROXBURY) S/O IR1068(FRYE CROSSOVER	C	II	1840	.	.	1610	.
17	ROXBURY	63700	0017X	SR 17 @ WALKER BROOK BR# 3205	C	III	930	.	.	840	.
17	ROXBURY	31702	00323	IR 323 (MAIN) NE/O SR 120(ROXBURY NOTCH)	C	II	620	.	.	750	.
17	ROXBURY	31602	01068	IR 1068(FRYE CROSSOVER) NE/O SR120@B2300	C	II	730	.	.	700	.
17	ROXBURY	31604	0120X	SR 120 SE/O IR 1068 (FRYE CROSSOVER RD)	C	I	.	.	.	560	.
17	ROXBURY	31608	0120X	SR 120 NW/O IR 1068 (FRYE CROSSOVER RD)	C	I	1120	.	.	1050	.
17	ROXBURY	31704	0120X	SR 120 (ROXBURY NOTCH) SE/O IR 323(MAIN)	C	I	960	.	.	980	.
17	ROXBURY	31706	0120X	SR 120 (ROXBURY NOTCH) SW/O IR 323(MAIN)	C	I	690	.	.	650	.
17	ROXBURY	48405	01783	IR 1783 (HORSESHOE VALLEY RD) S/O SR 120	C	I	110	.	.	90	.
17	RUMFORD	00101	0002X	US 2 (HANCOCK ST) N/O RUMFORD AVE	C	I	6620
17	RUMFORD	00106	0002X	US 2 (RUMFORD AVE) SW/O US 2 (HANCOCK)	C	I	10120	.	.	10060	.
17	RUMFORD	01403	0002X	US 2 (LINCOLN AVE) E/O WALDO ST	C	I	10580	.	.	10000	.
17	RUMFORD	01505	0002X	US 2 (HANCOCK ST) S/O LINCOLN AVE	C	I	6880	.	.	6330	.
17	RUMFORD	02601	0002X	US 2 (RUMFORD AVE) N/O WASHINGTON ST #2	C	I	5840	.	.	5190	.
17	RUMFORD	03008	0002X	US 2 (FRANKLIN ST) NW/O BRIDGE ST	C	I	6810	.	.	6440	.
17	RUMFORD	03102	0002X	US 2 (BRIDGE ST) NE/O PROSPECT AVE	C	I	12530
17	RUMFORD	03105	0002X	US 2 (PROSPECT AVE) S/O US 2 (BRIDGE)	C	I	12920	.	.	11420	.
17	RUMFORD	07305	0002X	US 2 S/O S RUMFORD RD	C	I	8570
17	RUMFORD	09402	0002X	US 2 NE/O PROSPECT AVE	C	II	7760	.	.	7550	.
17	RUMFORD	34203	0002X	US 2 E/O SR 5 @ BR# 2514	C	III	3990	.	.	3540	.
17	RUMFORD	34206	0002X	US 2/SR 5 SW/O SR 5	C	ATR32203	4680	.	.	3990	.
17	RUMFORD	34301	0002X	US 2 N/O SR 232	C	III	4100	.	.	3740	.
17	RUMFORD	34503	0002X	US 2 E/O IR 1080 (ANDOVER RD)	C	III	5410	.	.	4560	.
17	RUMFORD	34506	0002X	US 2 SW/O IR 1080 (ANDOVER RD) @BR# 5679	C	III	4890	.	.	3640	.
17	RUMFORD	33904	0005X	SR 5 SE/O IR 1080 (ANDOVER RD)	C	II+III	730	.	.	680	.
17	RUMFORD	33907	0005X	SR 5 W/O IR 1080 (ANDOVER RD)	C	II+III	910	.	.	820	.
17	RUMFORD	34201	0005X	SR 5 N/O US 2	C	II+III	790	.	.	670	.
17	RUMFORD	34001	00343	IR 343(E ANDOVER RD) N/O IR1080(ANDOVER)	C	I	.	.	.	360	.
17	RUMFORD	58408	00356	IR 356 (E BETHEL RD) NW/O SR 232	C	I	.	.	.	530	.
17	RUMFORD	35105	00366	IR 366 (WYMAN HILL RD) S/O IR 1098	C	I	950	.	.	860	.
17	RUMFORD	36403	00432	IR 432 (MILTON RD) E/O IR 363 @ BR# 6109	C	I	410	.	.	360	.
17	RUMFORD	34004	01080	IR 1080 (ANDOVER) SE/O IR 343(E ANDOVER)	C	II	640	.	.	550	.
17	RUMFORD	34508	01080	IR 1080 (ANDOVER RD) NW/O US 2	C	II	950	.	.	810	.

2007 Maine Transportation Count Book

Oxford

	TOWN	STATION	ROAD	LOCATION	TYPE	GROUP	AADT03	AADT04	AADT05	AADT06	AADT07
17	RUMFORD	00207	0108X	SR 108 (CANTON RD) W/O SMITHVILLE RD	C	I	3010	.	.	3440	.
17	RUMFORD	03002	0108X	SR 108 (BRIDGE ST) NE/O US 2 (FRANKLIN)	C	I	7620
17	RUMFORD	10102	0108X	SR 108 (BRIDGE ST) NE/O CANAL ST	C	I	6640	.	.	7140	.
17	RUMFORD	10404	0108X	SR 108 SE/O INDUSTRIAL PK RD@POLE# J72/2	C	I	2770	.	.	2840	.
17	RUMFORD	01501	0120X	SR 120 (HANCOCK ST) N/O US 2 (LINCOLN)	C	I	.	.	.	3090	.
17	RUMFORD	07000	0120X	SR 120 (HANCOCK ST) @CUL @RICHARDSON BK	C	I	1830	.	.	1390	.
17	RUMFORD	34306	0232X	SR 232 SW/O US 2	C	I	1720
17	RUMFORD	36505	0232X	SR 232 S/O IR 2600 (S RUMFORD RD)	C	I	1410	.	.	1240	.
17	RUMFORD	58404	0232X	SR 232 SE/O IR 356 (E BETHEL RD)	C	I	.	.	.	1080	.
17	RUMFORD	36407	02600	IR 2600 (S RUMFORD RD) W/O IR 432	C	I	710	.	.	640	.
17	RUMFORD	36408	02600	IR 2600 (S RUMFORD) NW/O IR 432@BR# 2010	C	I	690
17	RUMFORD	80002	02600	IR 2600 (S RUMFORD RD) NE/O IR 364	C	I	1110	.	.	960	.
17	RUMFORD	80107	02600	IR 2600 (S RUMFORD) W/O IR 370 @BR# 3056	C	I	740	.	.	690	.
17	RUMFORD	10001	10008	CONGRESS ST (ONE WAY SB) N/O SR 108 (BR)	C	I	2380	.	.	2620	.
17	RUMFORD	05106	10014	ESSEX AVE #1 SW/O FRANKLIN AVE	C	I	290
17	RUMFORD	01304	10016	FALMOUTH ST SE/O US 2 (LINCOLN AVE)	C	I	3100	.	.	2740	.
17	RUMFORD	02708	10018	FRANKLIN ST NW/O US 2 (RUMFORD AVE)	C	I	1530	.	.	1520	.
17	RUMFORD	05104	10018	FRANKLIN ST SE/O ESSEX AVE #1	C	I	1960	.	.	1980	.
17	RUMFORD	07407	10019	FREE ST W/O PROSPECT AVE	C	I	.	.	.	720	.
17	RUMFORD	00407	10033	LINCOLN AVE W/O SOMERSET AVE #1	C	I	.	.	.	4010	.
17	RUMFORD	05302	10033	LINCOLN AVE NE/O KNOX ST #2	C	I	1340	.	.	1310	.
17	RUMFORD	05507	10033	LINCOLN AVE W/O PENOBSCOT ST	C	I	2940	.	.	3240	.
17	RUMFORD	00307	10038	MAINE AVE W/O US 2 (HANCOCK ST)	C	I	1430	.	.	1340	.
17	RUMFORD	03402	10038	MAINE AVE NE/O SPRUCE ST	C	I	1480	.	.	1450	.
17	RUMFORD	02308	10043	PENOBSCOT ST NW/O PLYMOUTH AVE	C	I	660	.	.	590	.
17	RUMFORD	05501	10043	PENOBSCOT ST N/O LINCOLN AVE	C	I	320	.	.	300	.
17	RUMFORD	05505	10043	PENOBSCOT ST S/O LINCOLN AVE	C	I	760	.	.	600	.
17	RUMFORD	02306	10046	PLYMOUTH AVE SW/O PENOBSCOT ST	C	I	1450	.	.	1550	.
17	RUMFORD	02103	10049	PORTLAND ST E/O PLYMOUTH AVE @ BR# 2990	C	I	5690	.	.	5120	.
17	RUMFORD	03108	10050	PROSPECT AVE NW/O US 2 (BRIDGE)	C	I	2570	.	.	2960	.
17	RUMFORD	07405	10050	PROSPECT AVE S/O FREE ST	C	I	2310	.	.	2200	.
17	RUMFORD	09102	10050	PROSPECT AVE NE/O SUNNYSIDE TERRACE	C	I	660
17	RUMFORD	09206	10050	PROSPECT AVE SW/O EASTON HILL RD	C	I	510
17	RUMFORD	09908	10054	RIVER ST (ONE WAY NB) NW/O SR 108 (BR)	C	I	920	.	.	990	.

2007 Maine Transportation Count Book

County

Oxford

TOWN	STATION	ROAD	LOCATION	TYPE	GROUP	AADT03	AADT04	AADT05	AADT06	AADT07
17 RUMFORD	00102	10055	RUMFORD AVE NE/O US 2 (HANCOCK ST)	C	I	3540	.	.	4350	.
17 RUMFORD	00401	10058	SOMERSET AVE #1 N/O LINCOLN AVE	C	I	.	.	.	820	.
17 RUMFORD	07203	10059	S RUMFORD RD E/O US 2 @BR	C	I	2250	.	.	2180	.
17 RUMFORD	03408	10061	SPRUCE ST NW/O MAINE AVE @ BR	C	I	1970
17 RUMFORD	01802	10087	VETERANS ST NE/O RAILROAD ST #1	C	I	7070	.	.	7570	.
17 RUMFORD	10505	10093	WYMAN HILL RD S/O S RUMFORD RD	C	I	1370	.	.	1160	.
17 STONEHAM	45006	00740	IR 740 (SLAB CITY) SW/O SR 5 @ BR# 5096	C	III	230
17 STOW	42307	00427	IR 427 (CHATHAM RD) W/O SR 113 @ BR#3751	C	II	320	.	360	.	320
17 STOW	49601	00665	IR 665(UNION HILL RD) N/O IR 668(MEADOW)	C	II	.	.	200	.	240
17 STOW	42303	00668	IR 668 (MEADOW RD) E/O SR 113	C	II	220	.	240	.	330
17 STOW	42200	0113X	SR 113 (STOW RD) @ NH SL (S JCT)	C	II	.	.	390	.	340
17 STOW	42305	0113X	SR 113 S/O IR 668 (MEADOW RD) @ BR# 3581	C	II	950	.	870	.	840
17 STOW	50400	01288	IR 1288 (DEER HILL RD) @ BR# 0189	C	II	.	.	130	.	80
17 SUMNER	51108	00443	IR 443 (GREENWOODS RD) NW/O IR 540	C	II	450	.	.	740	.
17 SUMNER	36203	00540	IR 540 (FIELDS HILL) E/O IR 543 (VALLEY)	C	II	160
17 SUMNER	38401	00540	IR 540(GAMMON RD) N/O IR 2281@BR#0690@TL	C	II	240
17 SUMNER	51104	00540	IR 540 (LABRADOR RD) SE/O IR 443	C	I	220	.	.	190	.
17 SUMNER	36201	00543	IR 543 (VALLEY) N/O IR 540 (FIELDS HILL)	C	II	100
17 SUMNER	36204	00543	IR 543 (VALLEY) SE/O IR 540(FIELDS HILL)	C	I	140	.	.	160	.
17 SUMNER	51001	00998	IR 998 (GREENWOODS RD) N/O SR 219 (MAIN)	C	II	410	.	.	720	.
17 SUMNER	38103	0140X	SR 140/219(MAIN ST) E/O SR140@BR#5408@TL	C	I	.	.	.	1580	.
17 SUMNER	38105	0140X	SR 140 S/O SR 219 (MAIN ST)	C	I	1100	.	.	1180	.
17 SUMNER	37804	0219X	SR 219 (MAIN ST) SE/O IR 539(HEATH HILL)	C	I	1170	.	.	1770	.
17 SUMNER	38107	0219X	SR 219 (MAIN ST) W/O SR 140	C	I	.	.	.	1670	.
17 SUMNER	51005	0219X	SR 219(MAIN ST) S/O IR998(GREENWOODS RD)	C	I	.	.	.	1750	.
17 SUMNER	51503	0219X	SR 219 E/O IR 2501 (UPR SUMMER HILL RD)	C	I	.	.	.	1430	.
17 SUMNER	38405	02281	IR 2281 (GAMMON) S/O IR 540(FIELDS HILL)	C	I	190	.	.	200	.
17 SWEDEN	56106	00756	IR 756(WATERFORD RD) SW/O IR 785@BR#6104	C	III	.	.	270	.	330
17 SWEDEN	44704	0093X	SR 93 SE/O IR 756 (WATERFORD RD)	C	III	290	.	270	.	280
17 SWEDEN	44707	0093X	SR 93 W/O IR 783 (PLUMMER SCHOOL RD)	C	III	650	.	550	.	550
17 UPTON	30608	0026X	SR 26 NW/O IR 307 (MILL RD)	C	ATR32208	950	.	.	970	.
17 UPTON	30704	0026X	SR 26 SE/O IR 1431 (BACK ST)	C	ATR32208	670	.	.	660	.
17 WATERFORD	43704	0035X	SR 35(VALLEY RD) SE/O IR746(FIVE KEZARS)	C	ATR32203	1280	.	1090	.	1010
17 WATERFORD	44105	0035X	SR 35 (VALLEY RD) S/O SR 118 (NORWAY RD)	C	ATR32203	1700	.	1300	.	1260

2007 Maine Transportation Count Book

Oxford

	TOWN	STATION	ROAD	LOCATION	TYPE	GROUP	AADT03	AADT04	AADT05	AADT06	AADT07
17	WATERFORD	44108	0035X	SR 35 NW/O IR 2026	C	ATR32601	1980
17	WATERFORD	44308	0035X	SR 35 (VALLEY RD) NW/O SR 37 @ BR# 0780	C	ATR32203	1260	.	1140	.	1090
17	WATERFORD	44501	0035X	SR 35/37 N/O SR 35(WATERBORO RD)	C	ATR32203	2000	.	1610	.	1610
17	WATERFORD	48306	0035X	SR 35/37 SW/O IR 755 (PLUMMER HILL)	C	ATR32203	2140	.	1760	.	1850
17	WATERFORD	44205	0037X	SR 37 (WATERFORD RD) S/O SR 118(NORWAY)	C	II	1530	.	1550	.	1300
17	WATERFORD	44505	0037X	SR 37 (N BRIDGTON RD) S/O IR 959 (PW)	C	III	800	.	850	.	880
17	WATERFORD	48004	00504	IR 504 (MILL HILL RD) SE/O SR 35/37	C	III	430
17	WATERFORD	43901	00723	IR 723 (HUNTS CORNER RD) N/O SR 118	C	II	1000	.	950	.	.
17	WATERFORD	58507	00736	IR 736 (BISBEE TOWN) W/O IR 723 @BR#0726	C	II	.	.	480	.	210
17	WATERFORD	43706	00746	IR 746(FIVE KEZARS RD) SW/O IR775(GREEN)	C	II	400	.	290	.	300
17	WATERFORD	48308	00755	IR 755(PLUMMER HILL)NW/O SR 35/37(W JCT)	C	I	190
17	WATERFORD	44406	00756	IR 756 (SWEDEN RD) SW/O IR 960(CROSS ST)	C	III	530	.	630	.	600
17	WATERFORD	44004	00976	IR 976 (BISBEE TOWN) SE/O IR 2026(SAWIN)	C	II	380
17	WATERFORD	58407	00976	IR 976 (FISKE RD) W/O IR 723 @ BR# 0748	C	II	.	.	60	.	.
17	WATERFORD	44104	0118X	SR 118 (NORWAY RD) SE/O SR 35(VALLEY RD)	C	II	990	.	1030	1080	1080
17	WATERFORD	44203	0118X	SR 118 (NORWAY RD) E/O SR 37 (WATERFORD)	C	II	3100	.	3000	.	2590
17	WATERFORD	44208	0118X	SR 118(NORWAY RD) NW/O SR 37(WATERFORD)	C	II	2240	.	2160	2040	1890
17	WEST PARIS	37601	0026X	SR 26 N/O SR 219 & ANDREWS BK DR@BR#2015	C	II	5830	.	.	5650	.
17	WEST PARIS	37604	0026X	SR 26 SE/O SR 219 (S JCT)	C	II	6400	.	.	6850	.
17	WEST PARIS	37508	00523	IR 523 (HIGH ST) NW/O IR 1663 (MINE RD)	C	I	1170	.	.	1110	.
17	WEST PARIS	41702	00528	IR 528 (MCKEEN ST) NE/O SR 26	C	II	80
17	WEST PARIS	42703	00544	IR 544 (BENSON HILL RD) E/O IR 1442	C	I	280	.	.	170	.
17	WEST PARIS	60104	00569	IR 569 (MORSE HILL RD) SE/O IR 1442	C	I	110
17	WEST PARIS	44603	00572	IR 572 (FORBS RD) E/O IR 573(ELLINGWOOD)	C	I	140	.	.	130	.
17	WEST PARIS	44607	00572	IR 572 (TUELLTOWN RD) W/O IR 573	C	I	220	.	.	180	.
17	WEST PARIS	44605	00573	IR 573 (ELLINGWOOD RD) S/O IR 572(FORBS)	C	I	250	.	.	260	.
17	WEST PARIS	37407	00902	IR 902 (GREENWOOD ST) W/O IR 523 (HIGH)	C	I	410	.	.	320	.
17	WEST PARIS	59905	00902	IR 902 (GREENWOOD) S/O SR 219 @ BR# 5091	C	I	980	.	.	980	.
17	WEST PARIS	42005	00916	IR 916 (TUELLTOWN RD) S/O IR 544	C	I	180
17	WEST PARIS	37704	01442	IR 1442(MORSE HILL) SE/O SR 219 @BR#6326	C	I	.	.	.	520	.
17	WEST PARIS	37708	01442	IR 1442(ABBOTT HILL) NW/O SR219(N PARIS)	C	I	.	.	.	190	.
17	WEST PARIS	37603	0219X	SR 219 (N PARIS RD) E/O SR 26	C	I	2180	.	.	2900	.
17	WEST PARIS	37606	0219X	SR 219 SW/O SR 26 @ BR# 3575	C	II	2590
17	WEST PARIS	59901	0219X	SR 219 N/O IR 902 (GREENWOOD) @ RR XING	C	I	2280

County

2007 Maine Transportation Count Book

Oxford

	TOWN	STATION	ROAD	LOCATION	TYPE	GROUP	AADT03	AADT04	AADT05	AADT06	AADT07
17	WEST PARIS	59907	0219X	SR 219 W/O IR 902 (GREENWOOD)@BR#3460	C	II	.	.	.	580	.
17	WEST PARIS	60002	0219X	SR 219 NE/O IR 513 (TUELLTOWN RD)	C	I	1250	.	.	2070	.
17	WEST PARIS	60006	0219X	SR 219 SW/O IR 513 (LITTLEHOLE RD)	C	I	1180	.	.	2140	.
17	WOODSTOCK	36704	0026X	SR 26 (S MAIN ST) SE/O SR 232	C	II	4920	.	.	5050	.
17	WOODSTOCK	36707	0026X	SR 26 (S MAIN ST) W/O IR 2013	C	II	3870
17	WOODSTOCK	59308	0026X	SR 26 (N MAIN ST) NW/O IR 1133(LAKESIDE)	C	II	4260	.	.	4620	.
17	WOODSTOCK	59407	0026X	SR 26 (N MAIN ST) W/O IR 1136 (LAKE RD)	C	II	4560	.	.	4670	.
17	WOODSTOCK	59701	0026X	SR 26 N/O IR 460 (ANDREWS RD)	C	II	4920	.	.	5080	.
17	WOODSTOCK	66704	0026X	SR 26 SE/O IR 442 (CUSHMAN RD)	C	II	5020	.	.	5020	.
17	WOODSTOCK	36301	00416	IR 416(CONCORD PD RD) N/O IR 432@BR#0666	C	I	.	.	.	50	.
17	WOODSTOCK	36304	00432	IR 432 (SHAGG POND RD) SE/O IR 416	C	I	.	.	.	40	.
17	WOODSTOCK	36306	00432	IR 432 (CONCORD POND RD) SW/O IR 416	C	I	.	.	.	70	.
17	WOODSTOCK	66703	00442	IR 442 (CUSHMAN RD) E/O SR 26	C	I	150	.	.	190	.
17	WOODSTOCK	66500	00456	IR 456 @BR# 5677 (1.5 MI NW/O SR 219)	C	III	340
17	WOODSTOCK	59702	00460	IR 460 (ANDREWS RD) NE/O SR 26	C	I	550	.	.	560	.
17	WOODSTOCK	36601	0232X	SR 232 N/O IR 436 (GORE RD) @ BR# 3604	C	I	1500	.	.	1430	.
17	WOODSTOCK	36604	0232X	SR 232 SE/O IR 436 (GORE RD)	C	I	1550	.	.	1500	.
17	WOODSTOCK	36708	0232X	SR 232 NW/O IR 2013	C	I	1330	.	.	1210	.