

# Traffic Volume Counts 2007 Annual Report



## ***MaineDOT***

**Data collected and published by the  
State of Maine**

**Department of Transportation  
Traffic Engineering Division**

**In cooperation with the  
United States Department of Transportation  
Federal Highway Administration**

## **TABLE of CONTENTS**

**Forward**

**Continuous Count Program**

**24 Hour Traffic Data Collection Program**

**Description of Headings, Symbols, and Abbreviations**

**Map of State Count Zones**

**Graph of 2007 Weekly Group Mean Factors**

**List of 2007 Weekly Group Mean Factors**

**List of 2007 Weekly Group Mean Factors as a Percent of AADT**

**Traffic Volume Counts by County, Town, and Route**

## **FOREWORD**

The Department of Transportation, Traffic Engineering Division, and Traffic Monitoring Section is responsible for the collection of all types of traffic data and maintenance of a statewide traffic volume database. The reduction and reporting of traffic volumes and vehicle classification data are accomplished through two types of count programs. They are as follows:

### **CONTINUOUS COUNT PROGRAM**

Traffic volumes are monitored on a continuous year round basis at 64 permanent recorder sites located on major highways throughout the State. These hourly counts are collected to produce an average weekday figure, a weekly average day, a monthly average day, and a monthly average weekday. This information is compiled to develop an Annual Average Daily Traffic (AADT) figure for each location. The AADT is computed from the average of the weekly average day totals for the year.

The increasing demand to determine the types of vehicles (e.g. passenger cars, single-unit trucks, and semi's) traveling Maine's highways has prompted the development of a Continuous Classification Program. Currently, the department has 23 locations along routed highways that collect data based on thirteen categories as defined by the Federal Highway Administration. An AADT is computed based on the total volume.

### **24 HOUR TRAFFIC DATA COLLECTION PROGRAM**

Between April 1st and November 15th of each year, 24 hour traffic counts (i.e., coverage counts) are gathered to monitor traffic flow and changes in traffic patterns. These counts are generally taken at intersections with major routes and/or other significant roads, Compact Urban Lines (CUL), or Town Lines (TL), or in coordination with ongoing projects or special traffic studies for the Department.

Additionally, 24-hour vehicle classification counts are performed in conjunction with the coverage counts to provide a comprehensive view of traffic along the routed highways.

The State is divided into three count zones:

**ZONE I** : Southwestern Maine to western Penobscot Bay region. This zone includes all of York, Cumberland, Sagadahoc, Lincoln, Knox, and Waldo counties, Oxford county from Albany Twp/Waterboro West & Oxford, Otisfield, as well as Poland, and Mechanic Falls in Androscoggin county.

**ZONE II** : Western/Central Maine and eastern Penobscot Bay region. This zone includes all of Androscoggin except Poland, and Mechanic Falls, Franklin, Kennebec counties, the remainder of Oxford county, Somerset county from Bingham south plus between Flagstaff Lake area and Kennebec River, southern Penobscot county, and western Hancock county.

**ZONE III :** Northern and eastern Maine. This zone includes all of Aroostook, Piscataquis, Washington counties, northern and southeastern Hancock county, Penobscot county from Lagrange north, and the remainder of Somerset county.

These zones are counted on a five year cycle: Zones I and II are counted twice and Zone III once during each five year period. The coverage count program also consists of the “Special Counts” taken each year to satisfy Departmental needs, local requests, and Federal requirements. These include the annual collection of data for the State’s four urbanized areas (BACTS, KACTS, ATRC, and PACTS), Interstate System counts, and data collected from the various traffic studies conducted throughout the year. The 2007 Program included 3884 counts accomplished.

Once the AADT’s have been computed for all of the permanent recorder locations, weekly factors for each station are computed by dividing the AADT by each average weekly figure. Those stations which exhibit similar traffic patterns are assembled and placed into one of three groups:

**URBAN :** Roadways which carry commuter traffic and exhibit little seasonal change in traffic volumes.

**ARTERIAL :** Roadways which carry commuter traffic but exhibit moderate seasonal changes in traffic volumes.

**RECREATIONAL :** Roadways which are heavily influenced by seasonal traffic.

Within each of the three groups, a factor for each week is computed by averaging the weekly factors from each station within the group.

The 2007 Weekly Group Mean Factors were developed by averaging the Weekly Group Mean Factor for 2004, 2005 and 2006. The following pages show the graph of the 2007 Weekly Group Mean Factors, a list of these factors, and the 2007 Weekly Group Mean Factor as a percent of the AADT.

The 24-hour raw data may now be grouped and assigned a factor to produce an AADT. Growth factors for expanding traffic in uncounted zones are developed utilizing data from the permanent recorders and comparing it to the data from the previous year.

The updated AADT’s are entered into the Maine Department of Transportation’s database to be used by various Departmental employees.

### **DESCRIPTION of HEADINGS, SYMBOLS, AND ABBREVIATIONS**

The following is a description of the column headings, symbols, and abbreviations used for the Coverage Count Section.

**TOWN**            The town in which a count was taken

**ROUTE**            The road or highway on which the count was taken.

**Non-Interstate Highways and Roads**

---- X indicates a Routed Highway

0196X = SR 196

0001X = US Route 1

---- A or --- B indicates an Alternate Routed Highway

0001A = US Route 1A    0009B = SR 9B

---- C indicates a Business Route

0001C = Business US Route 1, 1A, or 1B

0025C = Business SR 25

Just a number with no letter OR no numbers or letters indicates a non-routed highway

= Pine Hill Road

00001 = Hubbard Road

01414 = IR 1414

00991 = IR 991 (Biddeford Road)

**Interstate System**

---- X indicates Northbound or Eastbound

0095X = I-95 Northbound

0395X = I-395 Eastbound

---- S indicates Southbound

0095S = I-95 Southbound

---- W indicates Westbound

0395W = I-395 Westbound

**LOCATION**

A description of where the count was taken.

<b>APP = Approach</b>	<b>ART = Arterial</b>	<b>AVE = Avenue</b>	<b>BK = Brook</b>	<b>BLVD = Boulevard</b>
<b>BR = Bridge</b>	<b>CIR = Circle</b>	<b>CL = County Line</b>	<b>CNR = Corner</b>	<b>CONN = Connector</b>
<b>CTR = Center</b>	<b>CUL = Compact Urban Line</b>	<b>CWY = Cause way</b>	<b>CV = Cove</b>	<b>DR = Drive</b>
<b>EB = Eastbound</b>	<b>ENT = Entrance</b>	<b>FL = Fall</b>	<b>FLS = Falls</b>	<b>FT = Fort</b>
<b>HTS = Heights</b>	<b>HWY = Highway</b>	<b>INT'L = International</b>	<b>ILD=Island</b>	<b>IR = Inventory Road</b>
<b>LG = Long</b>	<b>LK = Lake</b>	<b>LN = Lane</b>	<b>LWR = Lower</b>	<b>LTL = Little</b>
<b>MT = Mount</b>	<b>MTN = Mountain</b>	<b>NB = Northbound</b>	<b>NH = New Hampshire</b>	<b>OW = One Way</b>
<b>PD = Pond</b>	<b>PK = Park</b>	<b>PKWY = Park Way</b>	<b>PL = Place</b>	<b>PT = Point</b>
<b>PZ = Plaza</b>	<b>RD = Road</b>	<b>RDG = Ridge</b>	<b>RMP = Ramp</b>	<b>RR = Railroad</b>
<b>RV = River</b>	<b>SB = Southbound</b>	<b>SL = State Line</b>	<b>SQ = Square</b>	<b>SR = State Route</b>
<b>ST = Street</b>	<b>STA = Station</b>	<b>STR = Stream</b>	<b>TER = Terrace</b>	<b>TL = Town Line</b>
<b>TPK = Turnpike</b>	<b>TR = Trail</b>	<b>UPR = Upper</b>	<b>US = United States Route</b>	<b>WB = Westbound</b>

**N/O, NE/O, E/O, etc. = North of, Northeast of, East of, etc.**

**TYPE**      **Category for each count taken.**

- A Permanent Recorder Count**
- B BACTS Count**
- C Coverage Count**
- I Interstate Count**
- K KACTS Count**
- L ATRC Count (Formerly LACTS)**
- M Municipal, Town, Regional Count**
- P PACTS Count**
- S Special Count**
- T Turning Movement Count**
- W Weigh and Motion**
- Z Speed Count**

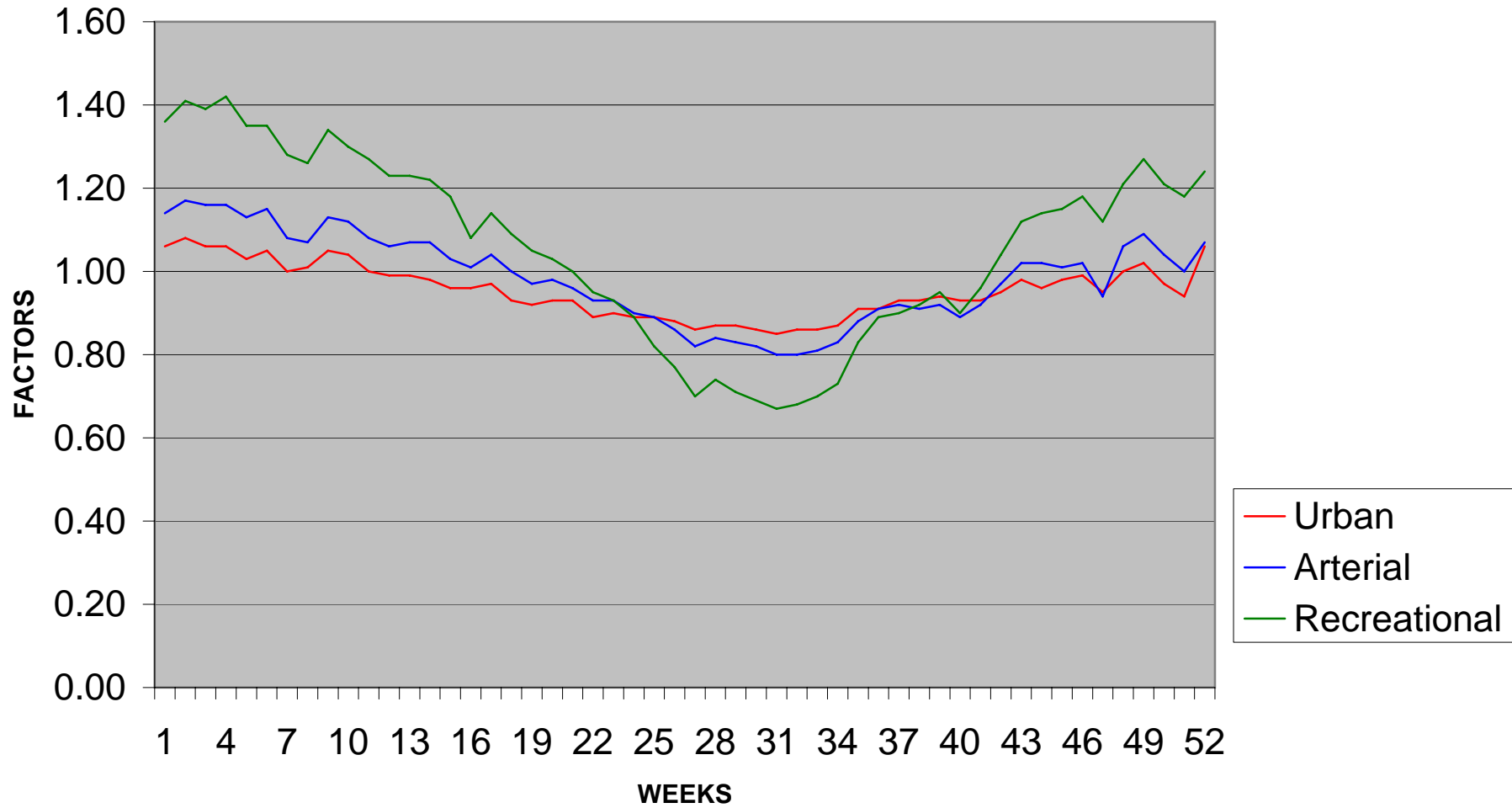
**GROUP**      The factor group assigned to the location.

- I Urban Group      II Arterial Group**
- III Recreational Group    ATR Permanent Recorder Controlled Group**

**AADT**      Annual Average Daily Traffic

# 2007 WEEKLY GROUP FACTORS

AVERAGE: 2004, 2005, 2006



2007  
WEEKLY GROUP MEAN FACTORS  
AVERAGE: 2004, 2005, 2006

			Month	Urban	Arterial	Recreational	Group	Group	Group	Year
Month	Start Date	Dates	Week #	Group I	Group II	Group III	I + II	II + III	I + III	Week #
Jan/Feb	(31)	1,2,3,4,5	1	1.06	1.14	1.36	1.10	1.25	1.21	1
	(7)	8,9,10,11,1	2	1.08	1.17	1.41	1.13	1.29	1.25	2
	(14)	15,16,17,1	3	1.06	1.16	1.39	1.11	1.28	1.23	3
	(21)	22,23,24,2	4	1.06	1.16	1.42	1.11	1.29	1.24	4
	(28)	29,30,31,1	5	1.03	1.13	1.35	1.08	1.24	1.19	5
Feb/Mar	(4)	5,6,7,8,9	1	1.05	1.15	1.35	1.10	1.25	1.20	6
	(11)	12,13,14,1	2	1.00	1.08	1.28	1.04	1.18	1.14	7
	(18)	19,20,21,2	3	1.01	1.07	1.26	1.04	1.17	1.14	8
	(25)	26,27,28,2	4	1.05	1.13	1.34	1.09	1.24	1.20	9
March	(4)	5,6,7,8,9	1	1.04	1.12	1.30	1.08	1.21	1.17	10
	(11)	12,13,14,1	2	1.00	1.08	1.27	1.04	1.18	1.14	11
	(18)	19,20,21,2	3	0.99	1.06	1.23	1.03	1.15	1.11	12
	(25)	26,27,28,2	4	0.99	1.07	1.23	1.03	1.15	1.11	13
April/May	(1)	2,3,4,5,6	1	0.98	1.07	1.22	1.03	1.15	1.10	14
	(8)	9,10,11,12	2	0.96	1.03	1.18	1.00	1.11	1.07	15
	(15)	16,17,18,1	3	0.96	1.01	1.08	0.99	1.05	1.02	16
	(22)	23,24,25,2	4	0.97	1.04	1.14	1.01	1.09	1.06	17
	(29)	30,1,2,3,4	1	0.93	1.00	1.09	0.97	1.05	1.01	18
May/Jun	(6)	7,8,9,10,1	2	0.92	0.97	1.05	0.95	1.01	0.99	19
	(13)	14,15,16,1	3	0.93	0.98	1.03	0.96	1.01	0.98	20
	(20)	21,22,23,2	4	0.93	0.96	1.00	0.95	0.98	0.97	21
	(27)	28,29,30,3	5	0.89	0.93	0.95	0.91	0.94	0.92	22
Jun/Jul	(3)	4,5,6,7,8	1	0.90	0.93	0.93	0.92	0.93	0.92	23

	(10)	11,12,13,1	2	0.89	0.90	0.89	0.90	0.90	0.89	24
	(17)	18,19,20,2	3	0.89	0.89	0.82	0.89	0.86	0.86	25
	(24)	25,26,27,2	4	0.88	0.86	0.77	0.87	0.82	0.83	26
Jul/Aug	(1)	2,3,4,5,6	1	0.86	0.82	0.70	0.84	0.76	0.78	27
	(8)	9,10,11,12	2	0.87	0.84	0.74	0.86	0.79	0.81	28
	(15)	16,17,18,1	3	0.87	0.83	0.71	0.85	0.77	0.79	29
	(22)	23,24,25,2	4	0.86	0.82	0.69	0.84	0.76	0.78	30
	(29)	30,31,1,2,3	5	0.85	0.80	0.67	0.83	0.74	0.76	31
Aug/Sep	(5)	6,7,8,9,10	1	0.86	0.80	0.68	0.83	0.74	0.77	32
	(12)	13,14,15,1	2	0.86	0.81	0.70	0.84	0.76	0.78	33
	(19)	20,21,22,2	3	0.87	0.83	0.73	0.85	0.78	0.80	34
	(26)	27,28,29,3	4	0.91	0.88	0.83	0.90	0.86	0.87	35
September	(2)	3,4,5,6,7	1	0.91	0.91	0.89	0.91	0.90	0.90	36
	(9)	10,11,12,1	2	0.93	0.92	0.90	0.93	0.91	0.92	37
	(16)	17,18,19,2	3	0.93	0.91	0.92	0.92	0.92	0.93	38
	(23)	24,25,26,2	4	0.94	0.92	0.95	0.93	0.94	0.95	39
	(30)	1,2,3,4,5	1	0.93	0.89	0.90	0.91	0.90	0.92	40
Oct/Nov	(7)	8,9,10,11,1	2	0.93	0.92	0.96	0.93	0.94	0.95	41
	(14)	15,16,17,1	3	0.95	0.97	1.04	0.96	1.01	1.00	42
	(21)	22,23,24,2	4	0.98	1.02	1.12	1.00	1.07	1.05	43
	(28)	29,30,31,1	5	0.96	1.02	1.14	0.99	1.08	1.05	44
Nov/Dec	(4)	5,6,7,8,9	1	0.98	1.01	1.15	1.00	1.08	1.07	45
	(11)	12,13,14,1	2	0.99	1.02	1.18	1.01	1.10	1.09	46
	(18)	19,20,21,2	3	0.95	0.94	1.12	0.95	1.03	1.04	47
	(25)	26,27,28,2	4	1.00	1.06	1.21	1.03	1.14	1.11	48
December	(2)	3,4,5,6,7	1	1.02	1.09	1.27	1.06	1.18	1.15	49
	(9)	10,11,12,1	2	0.97	1.04	1.21	1.01	1.13	1.09	50
	(16)	17,18,19,2	3	0.94	1.00	1.18	0.97	1.09	1.06	51
	(23)	24,25,26,2	4	1.06	1.07	1.24	1.07	1.16	1.15	52

2007  
WEEKLY GROUP MEAN FACTORS  
AVERAGE: 2004, 2005, 2006  
AS PERCENT OF AADT

Month	Start Date	Dates	Month Week #	Urban Group I	Arterial Group II	Recreational Group III	Group I + II	Group II + III	Group I + III	Year Week #
Jan/Feb	(31)	1,2,3,4,5	1	94.34	87.72	73.53	90.91	80.00	82.64	1
	(7)	8,9,10,11,1	2	92.59	85.47	70.92	88.50	77.52	80.00	2
	(14)	15,16,17,1	3	94.34	86.21	71.94	90.09	78.13	81.30	3
	(21)	22,23,24,2	4	94.34	86.21	70.42	90.09	77.52	80.65	4
	(28)	29,30,31,1	5	97.09	88.50	74.07	92.59	80.65	84.03	5
Feb/Mar	(4)	5,6,7,8,9	1	95.24	86.96	74.07	90.91	80.00	83.33	6
	(11)	12,13,14,1	2	100.00	92.59	78.13	96.15	84.75	87.72	7
	(18)	19,20,21,2	3	99.01	93.46	79.37	96.15	85.47	87.72	8
	(25)	26,27,28,2	4	95.24	88.50	74.63	91.74	80.65	83.33	9
March	(4)	5,6,7,8,9	1	96.15	89.29	76.92	92.59	82.64	85.47	10
	(11)	12,13,14,1	2	100.00	92.59	78.74	96.15	84.75	87.72	11
	(18)	19,20,21,2	3	101.01	94.34	81.30	97.09	86.96	90.09	12
	(25)	26,27,28,2	4	101.01	93.46	81.30	97.09	86.96	90.09	13
April/May	(1)	2,3,4,5,6	1	102.04	93.46	81.97	97.09	86.96	90.91	14
	(8)	9,10,11,12	2	104.17	97.09	84.75	100.00	90.09	93.46	15
	(15)	16,17,18,1	3	104.17	99.01	92.59	101.01	95.24	98.04	16
	(22)	23,24,25,2	4	103.09	96.15	87.72	99.01	91.74	94.34	17
	(29)	30,1,2,3,4	5	107.53	100.00	91.74	103.09	95.24	99.01	18
May/June	(6)	7,8,9,10,1	1	108.70	103.09	95.24	105.26	99.01	101.01	19
	(13)	14,15,16,1	2	107.53	102.04	97.09	104.17	99.01	102.04	20
	(20)	21,22,23,2	3	107.53	104.17	100.00	105.26	102.04	103.09	21
	(27)	28,29,30,3	4	112.36	107.53	105.26	109.89	106.38	108.70	22
June/July	(3)	4,5,6,7,8	1	111.11	107.53	107.53	108.70	107.53	108.70	23

	(10)	11,12,13,1	2	112.36	111.11	112.36	111.11	111.11	112.36	24
	(17)	18,19,20,2	3	112.36	112.36	121.95	112.36	116.28	116.28	25
	(24)	25,26,27,2	4	113.64	116.28	129.87	114.94	121.95	120.48	26
Jul/Aug	(1)	2,3,4,5,6	1	116.28	121.95	142.86	119.05	131.58	128.21	27
	(8)	9,10,11,12	2	114.94	119.05	135.14	116.28	126.58	123.46	28
	(15)	16,17,18,1	3	114.94	120.48	140.85	117.65	129.87	126.58	29
	(22)	23,24,25,2	4	116.28	121.95	144.93	119.05	131.58	128.21	30
	(29)	30,31,1,2,3	5	117.65	125.00	149.25	120.48	135.14	131.58	31
Aug/Sep	(5)	6,7,8,9,10	1	116.28	125.00	147.06	120.48	135.14	129.87	32
	(12)	13,14,15,1	2	116.28	123.46	142.86	119.05	131.58	128.21	33
	(19)	20,21,22,2	3	114.94	120.48	136.99	117.65	128.21	125.00	34
	(26)	27,28,29,3	4	109.89	113.64	120.48	111.11	116.28	114.94	35
September	(2)	3,4,5,6,7	1	109.89	109.89	112.36	109.89	111.11	111.11	36
	(9)	10,11,12,1	2	107.53	108.70	111.11	107.53	109.89	108.70	37
	(16)	17,18,19,2	3	107.53	109.89	108.70	108.70	108.70	107.53	38
	(23)	24,25,26,2	4	106.38	108.70	105.26	107.53	106.38	105.26	39
	(30)	1,2,3,4,5	1	107.53	112.36	111.11	109.89	111.11	108.70	40
Oct/Nov	(7)	8,9,10,11,1	2	107.53	108.70	104.17	107.53	106.38	105.26	41
	(14)	15,16,17,1	3	105.26	103.09	96.15	104.17	99.01	100.00	42
	(21)	22,23,24,2	4	102.04	98.04	89.29	100.00	93.46	95.24	43
	(28)	29,30,31,1	5	104.17	98.04	87.72	101.01	92.59	95.24	44
Nov/Dec	(4)	5,6,7,8,9	1	102.04	99.01	86.96	100.00	92.59	93.46	45
	(11)	12,13,14,1	2	101.01	98.04	84.75	99.01	90.91	91.74	46
	(18)	19,20,21,2	3	105.26	106.38	89.29	105.26	97.09	96.15	47
	(25)	26,27,28,2	4	100.00	94.34	82.64	97.09	87.72	90.09	48
December	(2)	3,4,5,6,7	1	98.04	91.74	78.74	94.34	84.75	86.96	49
	(9)	10,11,12,1	2	103.09	96.15	82.64	99.01	88.50	91.74	50
	(16)	17,18,19,2	3	106.38	100.00	84.75	103.09	91.74	94.34	51
	(23)	24,25,26,2	4	94.34	93.46	80.65	93.46	86.21	86.96	52

# 2007 Maine Transportation Count Book

County

Somerset

TOWN		STATION	ROAD	LOCATION	TYPE	GROUP	AADT03	AADT04	AADT05	AADT06	AADT07
25	ANSON	00103	0008X	SR 8/43/148 (MAIN) E/O SR 8/US 201A @BR	C	I	9130	.	.	8840	.
25	ANSON	00502	0008X	SR 8/US 201A (MAIN ST) NE/O WILSON ST	C	I	.	.	.	6430	.
25	ANSON	00601	0008X	SR 8/US 201A (MAIN ST) N/O RANDALL ST	C	I	5720	.	.	5770	.
25	ANSON	00901	0008X	SR 8/US 201A (MAIN) N/O PREBLE AVE	C	I	4790	.	.	4980	.
25	ANSON	01504	0008X	SR 8/US 201A (MAIN) SE/O SR 234 (UNION)	C	I	4500	.	.	4610	.
25	ANSON	01508	0008X	SR 8/US 201A (MAIN) NW/O SR 234 (UNION)	C	I	5280	.	.	.	.
25	ANSON	02208	0008X	SR 8/16/US 201A (MAIN) NW/O SR 16 (ELM)	C	I	.	.	.	4060	.
25	ANSON	02301	0008X	SR 8/16/US 201A (MAIN ST) N/O CENTER ST	C	I	3630	.	.	3940	.
25	ANSON	02800	0008X	SR 8/16/US201A (SOLON) @ CUL @ POLE# 33	C	I	2250	.	.	1900	.
25	ANSON	45601	0008X	SR 8/16/US 201A (SOLON RD) N/O IR 928	C	I	1660	.	.	1800	.
25	ANSON	02207	0016X	SR 16 (ELM ST) W/O SR 8/US 201A	C	II	4000	.	.	3900	.
25	ANSON	00106	0043X	SR 43/148 (MAIN ST) SW/O SPEAR HILL RD	C	I	4750	.	.	.	.
25	ANSON	00207	0043X	SR 43/148 (MAIN ST) W/O BROOK ST	C	I	.	.	.	3650	.
25	ANSON	00406	0043X	SR 43/148 (MAIN) .14 MI SW/O BUSWELL@CUL	C	I	2330	.	.	2730	.
25	ANSON	01303	0043X	SR 43/148 (MAIN ST) E/O ARNOLDS LN	C	I	.	.	.	4030	.
25	ANSON	36002	0043X	SR 43/148 (STARKS RD) NE/O SR 43(STARKS)	C	I	2350	.	.	2490	.
25	ANSON	36005	0043X	SR 43 (STARKS RD) S/O SR 148(W MILLS RD)	C	I	1080	.	.	1060	.
25	ANSON	02700	00689	FAHI POND RD @ CUL @ POLE # 9	C	I	510	.	.	610	.
25	ANSON	01800	00693	EMBDEN POND RD @ CUL @ POLE # 12	C	I	860	.	.	940	.
25	ANSON	00201	00818	BROOK ST N/O SR 43/148 (MAIN ST)	C	I	.	.	.	310	.
25	ANSON	01305	00824	ARNOLDS LN S/O SR 43/148 (MAIN ST)	C	I	.	.	.	230	.
25	ANSON	36007	0148X	SR 148(W MILL RD) W/O IR685(HILTON HILL)	C	I	1240	.	.	1350	.
25	ANSON	36100	0148X	SR 148 (W MILLS RD) @ INDUSTRY TL	C	I	350	.	.	350	.
25	ANSON	45907	0148X	SR 148 W/O IR 642 (MAYHEW RD)	C	I	570	.	.	.	.
25	ANSON	01507	0234X	SR 234 (UNION) W/O SR 8/US 201A (MAIN)	C	I	.	.	.	1460	.
25	ANSON	54300	0234X	SR 234 (VALLEY RD) @ NEW VINEYARD TL	C	I	.	.	.	1240	.
25	ATHENS	54401	00327	IR 327(NORTH RD) N/O IR 350@BR#1019&1020	C	I	.	.	.	400	.
25	ATHENS	54403	00350	IR 350 (VALLEY RD) E/O IR 327 @ BR# 6127	C	I	.	.	.	360	.
25	ATHENS	33405	00391	IR 391 (E RIDGE RD) S/O SR 43/151	C	I	.	.	.	540	.
25	ATHENS	33404	0043X	SR 43/151 SE/O IR 391(E RIDGE RD)	C	I	.	.	.	850	.
25	ATHENS	37805	0043X	SR 150/151 (MAIN ST) S/O SR 150(HARMONY)	C	I	3100	.	.	3240	.
25	ATHENS	39703	0043X	SR 43/151 E/O IR 385 @ BR# 2135 @TL	C	I	840	.	.	1020	.
25	ATHENS	40106	0043X	SR 43/150 SW/O SR 43/151 @ BR# 2925	C	I	.	.	.	3700	.
25	ATHENS	37803	0150X	SR 150 (HARMONY RD) E/O SR 151(BRIGHTON)	C	I	2280	.	.	2180	.

# 2007 Maine Transportation Count Book

County

Somerset

TOWN	STATION	ROAD	LOCATION	TYPE	GROUP	AADT03	AADT04	AADT05	AADT06	AADT07
25 ATHENS	47600	0150X	SR 150 (HARMONY RD) @ HARMONY TL	C	I	.	.	.	1880	.
25 ATHENS	37801	0151X	SR 151 (BRIGHTON RD) N/O SR 150(HARMONY)	C	I	1090	.	.	1070	.
25 BINGHAM	00102	0016X	SR 16/US 201 (MAIN ST) NE/O MEADOW ST	C	I+II	.	.	.	6330	.
25 BINGHAM	00701	0016X	SR 16/US 201 (MAIN) N/O SR 16 (BRIDGE)	C	I+II	5880	.	.	5900	.
25 BINGHAM	00707	0016X	SR 16 (BRIDGE ST) W/O US 201 (MAIN ST)	C	II	1240	.	.	1150	.
25 BINGHAM	00801	0016X	SR 16/US 201 (MAIN ST) N/O OWENS ST	C	I+II	.	.	.	6200	.
25 BINGHAM	01306	0016X	SR 16/US 201 (MAIN ST) SW/O RIVER ST	C	I+II	6220	.	.	6260	.
25 BINGHAM	02002	0016X	SR 16 NE/O US 201 (JACKMAN RD)	C	II	1660	.	.	1690	.
25 BINGHAM	01803	00304	GOODRICH RD E/O US 201 (MAIN ST)	C	I	.	.	.	250	.
25 BINGHAM	32703	00308	IR 308 (MAHONEY HILL RD) E/O US 201	C	I	100	.	.	170	.
25 BINGHAM	34907	00308	IR 308 (MAHONEY HILL) W/O IR 313@BR#5254	C	I	.	.	.	80	.
25 BINGHAM	34900	00313	IR 313 1.8MI SE/O IR 308 @ BR# 1018	C	I	.	.	.	40	.
25 BINGHAM	55303	00335	IR 335(BRIGHTON) E/O IR313(MAHONEY HILL)	C	I	60	.	.	20	.
25 BINGHAM	01307	01217	RIVER ST W/O LOIS LN(PW)(ENT TO PARKING)	C	I	.	.	.	190	.
25 BINGHAM	00803	01220	OWENS ST E/O SR 16/US 201 (MAIN ST)	C	I	.	.	.	560	.
25 BINGHAM	00203	01222	ROLLINS ST E/O SR 16/US 201 (MAIN ST)	C	I	.	.	.	170	.
25 BINGHAM	00903	01223	SIDNEY ST E/O SR 16/US 201 (MAIN ST)	C	I	.	.	.	230	.
25 BINGHAM	00103	01224	MEADOW ST E/O SR 16/US 201 (MAIN ST)	C	I	.	.	.	450	.
25 BINGHAM	00403	01225	MURRAY ST E/O SR 16/US 201 (MAIN ST)	C	I	.	.	.	320	.
25 BINGHAM	57401	0201X	US 201 N/O IR 2134 (SPRUCE ST)	A	ATR57401	.	.	.	3200	3120
25 BINGHAM	00705	0201X	US 201 (MAIN ST) S/O SR 16 (BRIDGE ST)	C	II	5150	.	.	5750	.
25 BINGHAM	01804	0201X	US 201 (MAIN ST) SE/O GOODRICH RD	C	II	.	.	.	4940	.
25 BINGHAM	02008	0201X	US 201 (JACKMAN RD) NW/O SR 16	C	II	4810	.	.	4300	.
25 BINGHAM	02200	0201X	US 201 (JACKMAN RD) @ MOSCOW TL	C	II	3910	4200	.	3540	.
25 BINGHAM	32708	0201X	US 201 NW/O IR 308 (MAHONEY HILL RD)	C	II	3770	.	.	.	.
25 BINGHAM	48601	0201X	US 201 N/O IR 2134 (TANGLE WOOD DR)	C	II	.	.	.	4630	.
25 BINGHAM	48608	02134	IR 2134 (TANGLE WOOD DR) NW/O US 201	C	II	.	.	.	60	.
25 BRIGHTON PLT	37707	00334	IR 334 (SOLON RD) W/O SR 151 @ BR# 5194	C	I	.	.	.	50	.
25 BRIGHTON PLT	30600	0151X	SR 151 @ MAYFIELD TWP TL	C	I	360	310	.	390	.
25 BRIGHTON PLT	37601	0151X	SR 151 N/O SR 154	C	I	390	.	.	370	.
25 BRIGHTON PLT	37605	0151X	SR 151 S/O SR 154 @ BR# 5826	C	I	540	.	.	480	.
25 BRIGHTON PLT	37705	0151X	SR 151 S/O IR 334 (SOLON RD)	C	I	510	.	.	450	.
25 BRIGHTON PLT	30700	0154X	SR 154 @ WELLINGTON TWP TL	C	I	80	.	.	.	.
25 BRIGHTON PLT	37604	0154X	SR 154 SE/O IR 1055 (MCCROSS LN)	C	I	90	.	.	110	.

# 2007 Maine Transportation Count Book

County

Somerset

TOWN	STATION	ROAD	LOCATION	TYPE	GROUP	AADT03	AADT04	AADT05	AADT06	AADT07	
25	CAMBRIDGE	38701	0150X	SR 150(MAIN) N/O IR 580(DEXTER) @BR#2276	C	I	1990	.	.	1730	.
25	CAMBRIDGE	38706	0150X	SR 150(HARMONY RD) SW/O SR152(RIPLEY RD)	C	I	1720	.	.	1470	.
25	CAMBRIDGE	47900	0150X	SR 150 (GUILFORD RD) @ PARKMAN TL	C	I	1630	1610	.	1620	.
25	CAMBRIDGE	48006	0150X	SR 150 SW/O IR 576 (LEAVITT) @ BR# 2410	C	I	1600	.	.	.	.
25	CAMBRIDGE	38703	0152X	SR 152(RIPLEY) E/O SR150(HARMONY)@BR3583	C	I	.	.	.	390	.
25	CANAAN	41302	0002X	US 2 NE/O SR 23 (E JCT)	C	II	5590	.	.	5090	.
25	CANAAN	41306	0002X	US 2 SW/O SR 23 (E JCT)	C	II	6410	.	.	6660	.
25	CANAAN	41407	0002X	US 2 W/O SR 23	C	II	7320	.	.	7070	.
25	CANAAN	41301	0023X	SR 23 N/O US 2 (E JCT)	C	I+II	2060	.	.	1770	.
25	CANAAN	41406	0023X	SR 23 SW/O US 2	C	II	1770	.	.	2160	.
25	CANAAN	51700	0023X	SR 23 @ CLINTON TL	C	II	2360	.	.	2130	.
25	CANAAN	52202	0023X	SR 23 NE/O IR 867 (BROWNS CORNER RD)	C	I+II	940	.	.	1080	.
25	CANAAN	41405	00487	IR 487 (HILL RD) S/O US 2	C	I	.	.	.	1660	.
25	CANAAN	52201	00867	IR 867 (BROWNS CORNER RD) N/O SR 23	C	I	.	.	.	500	.
25	CARATUNK	36202	00580	IR 590 (PLEASANT POND RD) NE/O IR 1726	C	III	.	140	.	.	.
25	CARATUNK	39202	00590	IR 590(N SHORE RD) NE/O IR 1000(W SHORE)	C	III	.	60	.	.	.
25	CARATUNK	39204	01000	IR 1000(W SHORE RD) SE/O IR 590(N SHORE)	C	III	.	60	.	.	.
25	CARATUNK	35601	01726	IR 1726 (OLD RT 201) N/O US 201	C	II	.	170	.	.	.
25	CARATUNK	36208	01726	IR 1726 (OLD RT 201) NW/O IR 590	C	II	.	150	.	.	.
25	CARATUNK	35605	0201X	US 201 S/O IR 1726 (OLD RT 201)	C	II	.	2070	.	.	.
25	CARATUNK	35608	0201X	US 201 NW/O IR 1726 (OLD RT 201)	C	II	.	1860	.	.	.
25	CARATUNK	36601	0201X	US 201 N/O IR 1726 (OLD RT 201)	C	II	.	2060	.	.	.
25	CARATUNK	41900	0201X	US 201 @ MOSCOW TL	C	II	.	2420	.	.	.
25	CARRYING PLACE TWP	46300	00631	IR 631 (CARRY RD) @ PLEASANT RDG PLT TL	C	II	.	.	.	90	.
25	CONCORD TWP	32602	0016X	SR 16 NE/O IR 631 (RIDGE RD) @ BR # 3236	C	II	1270	.	.	.	.
25	CONCORD TWP	32604	0016X	SR 16(KENNEBEC RV RD) SE/O IR 631(RIDGE)	C	II	.	.	.	650	.
25	CONCORD TWP	43505	0016X	SR 16 S/O IR 668 (JACKSON POND RD)	C	II	560	.	.	510	.
25	CONCORD TWP	32608	00631	IR 631(RIDGE RD) NW/O SR 16(KENNEBEC RV)	C	II	490	.	.	540	.
25	CONCORD TWP	47408	00631	IR 631 (RIDGE RD) NW/O IR 691 (BLUFF RD)	C	II	.	.	.	480	.
25	CONCORD TWP	47004	00661	IR 661 (BERT BERRY RD) SE/O IR 668	C	I	.	.	.	40	.
25	CONCORD TWP	43504	00668	IR 668 (COOL RD) SE/O SR 16 @ BR#1059	C	II	.	.	.	50	.
25	CONCORD TWP	43506	00668	IR 668 (JACKSON POND RD) SW/O SR 16	C	I	.	.	.	110	.
25	CONCORD TWP	47006	00668	IR 668(JACKSON PD RD) SW/O IR661@BR#6055	C	I	.	.	.	30	.
25	CONCORD TWP	47407	00691	IR 691 (BLUFF RD) W/O IR 631 (RIDGE RD)	C	I	.	.	.	90	.

# 2007 Maine Transportation Count Book

County

Somerset

TOWN	STATION	ROAD	LOCATION	TYPE	GROUP	AADT03	AADT04	AADT05	AADT06	AADT07
25 CONCORD TWP	44605	00889	IR 889(LITTLE HOUSTON) S/O IR635@BR#6056	C	II	.	.	.	20	.
25 CORNVILLE	39801	00327	IR 327 (CHAPMAN RDG) N/O SR 43@ATHENS TL	C	I	330	.	.	410	.
25 CORNVILLE	49507	00372	IR 372 (JAMES RD) W/O SR 150 @BR# 1026	C	II	90	.	.	.	.
25 CORNVILLE	50305	00391	IR 391 (E RIDGE RD) S/O IR 369 (HUFF RD)	C	II	780	.	.	.	.
25 CORNVILLE	39802	0043X	SR 43/150(BECKWITH) NE/O SR 43(SHADAGEE)	C	I	3390	.	.	3410	.
25 CORNVILLE	39807	0043X	SR 43 (SHADAGEE) W/O IR 327(CHAPMAN RDG)	C	I	1490	.	.	1380	.
25 CORNVILLE	39805	01044	IR 1044(W RDG RD) S/O SR150(BECKWITH)NJC	C	I	410	.	.	300	.
25 CORNVILLE	39806	0150X	SR 150 SW/O IR 1044 (N JCT)	M	I	2670	.	.	.	.
25 CORNVILLE	40002	0150X	SR 150(BECKWITH) NE/O IR1044(KINSMAN)SJC	C	I	2300	.	.	2340	.
25 CORNVILLE	50101	0150X	SR 150(BECKWITH) N/O IR374(REVERE SCHOOL	C	I	2700	.	.	2610	.
25 DEAD RIVER TWP	32300	01417	IR 1417 (LONG FALLS RD) @ BR # 1076	C	I	100	.	.	.	.
25 DENNISTOWN PLT	34600	0006X	SR 6/US 201 @ SANDY BAY TWP TL	C	II	.	1870	.	.	.
25 DETROIT	40506	0011X	SR 11/100 SW/O SR 220	C	I	4690	.	.	4530	.
25 DETROIT	54007	00484	IR 484 (BASFORD RD) W/O SR 220	C	I	620	.	.	.	.
25 DETROIT	40606	0069X	SR 69 SW/O IR 2011 (BEAN LN)	C	I	930	.	.	900	.
25 DETROIT	40704	0069X	SR 69 SE/O SR 220	C	I	1030	.	.	1080	.
25 DETROIT	40504	0220X	SR 220 SE/O IR 1183 (HURDS CNR) @BR#3627	C	I	2060	.	.	1900	.
25 DETROIT	40705	0220X	SR 220 S/O SR 69	C	I	1550	.	.	1440	.
25 DETROIT	40904	0220X	SR 220 SE/O IR 482 (WEEMAN RD) @ TROY TL	C	I	910	.	.	770	.
25 EAST MOXIE TWP	39400	00588	IR 588 (LAKE MOXIE RD) @ THE FORKS TL	C	III	.	230	.	.	.
25 EMBDEN	33005	0008X	SR 8/16/US 201A S/O SR 8/US 201A	C	I	2020	.	.	1910	.
25 EMBDEN	33001	0016X	SR 16 (KENNEBEC RV RD) N/O SR 8/US 201A	C	II	700	.	.	690	.
25 EMBDEN	43602	0016X	SR 16 NE/O IR 661 (BERT BERRY RD)	C	II	510	.	.	480	.
25 EMBDEN	44901	0016X	SR 16 N/O IR 793 (KATIE CROUCH RD)	C	II	1510	.	.	1740	.
25 EMBDEN	43601	00661	IR 661 (BERT BERRY RD) N/O SR 16	C	I	.	.	.	270	.
25 EMBDEN	43608	00661	IR 661 (BERT BERRY RD) NW/O IR 672	C	I	.	.	.	130	.
25 EMBDEN	44701	00668	IR 668 (CONCORD CORNER RD) N/O IR 672	C	I	.	.	.	20	.
25 EMBDEN	43607	00672	IR 672 (MOULTON RD) W/O IR 661 @BR# 1060	C	I	.	.	.	170	.
25 EMBDEN	44703	00672	IR 672 (MOULTON RD) E/O IR 668	C	I	.	.	.	90	.
25 EMBDEN	44707	00672	IR 672 (MOULTON RD) W/O IR 668	C	II	.	.	.	90	.
25 EMBDEN	33702	00676	IR 676(CROSS TOWN) NE/O IR693(EMBDEN PD)	C	I	620	.	.	710	.
25 EMBDEN	44503	00676	IR676(CROSS TOWN) E/O IR689(DUNBAR HILL)	C	I	.	.	.	680	.
25 EMBDEN	44507	00676	IR 676 (CROSS TOWN) W/O IR 921 (E SHORE)	C	I	600	.	.	700	.
25 EMBDEN	44501	00689	IR 689 (DUNBAR HILL RD) N/O IR 676	C	I	.	.	.	180	.

# 2007 Maine Transportation Count Book

County

Somerset

TOWN	STATION	ROAD	LOCATION	TYPE	GROUP	AADT03	AADT04	AADT05	AADT06	AADT07
25 EMBDEN	44505	00689	IR 689(FAHI PD RD) S/O IR676(CROSS TOWN)	C	I	.	.	.	310	.
25 EMBDEN	33605	00693	IR 693(CROSS TOWN) S/O IR1571(WENTWORTH)	C	II	610	.	.	.	.
25 EMBDEN	44508	00921	IR 921 (E SHORE) NW/O IR 676(CROSS TOWN)	C	II	.	.	.	350	.
25 FAIRFIELD	00102	0011X	SR 11/US 201 (MAIN ST) NE/O BURRILL ST	C	I	.	.	.	10350	.
25 FAIRFIELD	01603	0011X	SR 11/100/139(BRIDGE) E/O SR 139/US 201	C	I	13830	.	.	12900	.
25 FAIRFIELD	01606	0011X	SR 11/100/US 201(MAIN) SW/O LAWRENCE AVE	C	I	12690	.	.	12050	.
25 FAIRFIELD	41505	0023X	SR 23/US 201 S/O SR 23	C	ATR56204	.	.	.	8600	.
25 FAIRFIELD	41806	0023X	SR 23 SW/O US 201	C	I	.	.	.	950	.
25 FAIRFIELD	41808	0023X	SR 23/US 201 NW/O SR 23	C	ATR56204	8900	.	.	8200	.
25 FAIRFIELD	42102	0023X	SR 23 NE/O SR 104/139	C	I	1830	.	.	1860	.
25 FAIRFIELD	51506	0023X	SR 23 (OAKLAND RD) SW/O IR 547 (SIX ROD)	C	I	2730	.	.	2860	.
25 FAIRFIELD	51301	00544	IR 544 (UPR RIDGE RD) N/O SR 139	C	I	1300	.	.	1310	.
25 FAIRFIELD	51306	00544	IR 544 (LWR RIDGE RD) SW/O SR 139	C	I	970	.	.	960	.
25 FAIRFIELD	51507	00547	IR 547 (SIX ROD RD) W/O SR 23 (OAKLAND )	C	I	1350	.	.	1510	.
25 FAIRFIELD	51607	00547	IR 547 (MARTIN STR) W/O IR 567(TEN LOTS)	C	I	1210	.	.	1380	.
25 FAIRFIELD	51605	00567	IR 567 (TEN LOTS) S/O IR 547 (SIX ROD)	C	I	1090	.	.	1210	.
25 FAIRFIELD	54406	00567	IR 567 (DAVIS) SW/O SR 104/139 (MIDDLE)	C	I	.	.	.	640	.
25 FAIRFIELD	52702	0095S	I-95 (SB) N/O ON RAMP FROM US 201	I	ATR53104	9340	.	8970	.	10080
25 FAIRFIELD	52704	0095S	I-95 (SB) N/O OFF RAMP TO US 201	I	ATR53104	10240	.	10150	.	10600
25 FAIRFIELD	52802	0095S	I-95 (SB) N/O ON RAMP FROM WESTERN AVE	I	ATR53104	10090	.	10500	.	10680
25 FAIRFIELD	52804	0095S	I-95 (SB) N/O OFF RAMP TO WESTERN AVE	I	ATR53104	11660	.	11600	.	12100
25 FAIRFIELD	52701	0095X	I-95 (NB) N/O ON RAMP FROM US 201	I	ATR53103	11720	.	12270	.	12510
25 FAIRFIELD	52703	0095X	I-95 (NB) N/O OFF RAMP TO US 201	I	ATR53103	9360	.	9690	.	10240
25 FAIRFIELD	52801	0095X	I-95 (NB) N/O OFF RAMP TO WESTERN AVE	I	ATR53103	9920	.	10370	.	10390
25 FAIRFIELD	52803	0095X	I-95 (NB) N/O ON RAMP FROM WESTERN AVE	I	ATR53103	10990	.	11090	.	11630
25 FAIRFIELD	41601	0104X	SR 104 N/O IR 539 (BACK RD)	S	I	1900	.	.	1990	.
25 FAIRFIELD	41701	0104X	SR 104 N/O SR 139	C	I	3180	.	.	2900	.
25 FAIRFIELD	42008	0104X	SR 104/139 NW/O SR 139 @ BR# 6218	C	I	11380	.	.	11210	.
25 FAIRFIELD	42108	0104X	SR 104/139 NW/O SR 23	C	I	9580	.	.	9440	.
25 FAIRFIELD	54408	0104X	SR 104/139 (MIDDLE) NW/O IR 567 (DAVIS)	C	I	8710	.	.	8900	.
25 FAIRFIELD	01601	0139X	SR 139/US 201 (MAIN ST) N/O LAWRENCE AVE	C	I	.	.	.	13930	.
25 FAIRFIELD	02807	0139X	SR 139 (WESTERN AVE) W/O NEWHALL ST	C	I	8190	.	.	8150	.
25 FAIRFIELD	03903	0139X	SR 139 (WESTERN) E/O I-95 (NB) RAMPS	C	I	10300	.	.	10830	.
25 FAIRFIELD	04007	0139X	SR 139 (WESTERN AVE) W/O I-95 (SB) RAMPS	C	I	7360	.	.	7310	.

# 2007 Maine Transportation Count Book

County

Somerset

TOWN	STATION	ROAD	LOCATION	TYPE	GROUP	AADT03	AADT04	AADT05	AADT06	AADT07
25 FAIRFIELD	36700	0139X	SR 139 @ NORRIDGEWOCK TL	C	I	5690	.	.	4700	.
25 FAIRFIELD	41708	0139X	SR 139 NW/O IR 1878 (ADAM RD)	C	I	5970	.	.	5830	.
25 FAIRFIELD	50804	0139X	SR 139 SE/O IR 540 (COVELL RD) @ BR#3969	C	I	5670	.	.	4720	.
25 FAIRFIELD	51307	0139X	SR 139 (CENTER RD) W/O IR 544 (RIDGE RD)	C	I	5260	.	.	5250	.
25 FAIRFIELD	02701	0201X	US 201 N/O SR 139 (WESTERN AVE)	C	I	7400	.	.	7100	.
25 FAIRFIELD	03405	0201X	US 201 S/O I-95 (NB) RAMPS	C	I	6730	.	.	.	.
25 FAIRFIELD	03501	0201X	US 201 N/O I-95 (SB) RAMPS	C	ATR56204	10670	.	.	10430	.
25 FAIRFIELD	41501	0201X	US 201 N/O IR 534 (KENDALL ANNEX)	C	ATR56204	8030	.	.	7860	.
25 FAIRFIELD	41804	0201X	US 201 SE/O SR 23	C	ATR56204	8370	.	.	7580	.
25 FAIRFIELD	51205	0201X	US 201 S/O IR 945 (S JCT)	C	ATR56204	9620	.	.	9920	.
25 FAIRFIELD	00108	10006	BURRILL ST NW/O SR 11/US 201 (MAIN ST)	C	I	.	.	.	540	.
25 FAIRFIELD	00208	10006	BURRILL ST NW/O HIGH ST	C	I	.	.	.	650	.
25 FAIRFIELD	00202	10026	HIGH ST NE/O BURRILL ST	C	I	.	.	.	1840	.
25 FAIRFIELD	01002	10026	HIGH ST NE/O BURNS ST	C	I	2000	.	.	1730	.
25 FAIRFIELD	01801	10026	HIGH ST N/O SUMMIT ST	C	I	.	.	.	2360	.
25 FAIRFIELD	02905	10026	HIGH ST S/O SR 139 (WESTERN AVE)	C	I	2060	.	.	1790	.
25 FAIRFIELD	01607	10032	LAWRENCE AVE W/O SR 11/100/US 201(MAIN)	C	I	2920	.	.	2670	.
25 FAIRFIELD	00600	10049	SAVAGE AVE @ WATERVILLE TL	C	I	3820	.	.	3400	.
25 FAIRFIELD	01906	10049	SAVAGE AVE SW/O WEST ST	C	I	3100	.	.	3070	.
25 FAIRFIELD	01707	10052	SUMMIT ST W/O SR 11/100/US 201 (MAIN)	C	I	1230	.	.	1080	.
25 FAIRFIELD	01807	10052	SUMMIT ST W/O HIGH ST	C	I	840	.	.	.	.
25 FAIRFIELD	01905	10060	WEST ST S/O SAVAGE ST	C	I	.	.	.	490	.
25 FAIRFIELD	03005	10060	WEST ST S/O SR 139 (WESTERN AVE)	C	I	2280	.	.	2450	.
25 HARMONY	47801	00577	IR 577 (CHADBOURNE RD) N/O IR 572 @ TL	C	I	140	.	.	160	.
25 HARMONY	54301	00577	IR 577 (CHADBOURNE RD) N/O SR 150	C	I	360	.	.	530	.
25 HARMONY	38606	0150X	SR 150(ATHENS RD) SW/O SR 154 @ BR# 5846	C	I	1750	.	.	1800	.
25 HARMONY	49206	0150X	SR 150 (ATHENS RD) SW/O IR 376(NORTH RD)	C	I	1730	.	.	1680	.
25 HARMONY	54302	0150X	SR 150 NE/O IR 1204 (HIGH LAND AVE)	C	I	1700	.	.	1620	.
25 HARMONY	38504	0154X	SR 154(MAIN STR) SE/O IR1204(HIGH LAND)	C	I	780	.	.	700	.
25 HARMONY	38605	0154X	SR 154(MAIN ST) S/O SR 150(CAMBRIDGE RD)	C	I	1080	.	.	1140	.
25 HARMONY	38608	0154X	SR 154 NW/O SR 150 (CAMBRIDGE RD)	C	I	670	.	.	640	.
25 HARMONY	48908	0154X	SR 154 (RIPLEY RD) NW/O IR 581(BROWN RD)	C	I	710	.	.	670	.
25 HARTLAND	00203	0023X	SR 23/43/151/152 (MAIN ST) E/O MILL ST	C	I	5290	.	4320	5230	.
25 HARTLAND	00207	0023X	SR 23/43/151 (MAIN ST) W/O MILL ST	C	I	4510	.	.	.	.

## 2007 Maine Transportation Count Book

## Somerset

TOWN	STATION	ROAD	LOCATION	TYPE	GROUP	AADT03	AADT04	AADT05	AADT06	AADT07
25 HARTLAND	00406	0023X	SR 23 (MAIN ST) SW/O SR 43/151(PLEASANT)	C	I	.	.	1390	1490	.
25 HARTLAND	00506	0023X	SR 23 (MAIN) 0.3 MI SW/O SR 43/151 @ CUL	C	I	1080	.	.	1220	.
25 HARTLAND	00902	0023X	SR 23/43/152 (ACADEMY) NE/O SR 151 (ELM)	C	I	3570	.	3130	3210	.
25 HARTLAND	00907	0023X	SR 23/43/151/152(MAIN) W/O COMMERCIAL ST	C	I	5170	.	4360	4940	.
25 HARTLAND	01100	0023X	SR 23/43/152 (ACADEMY ST) @ ST ALBANS TL	C	I	2840	.	.	2700	.
25 HARTLAND	40207	0023X	SR 23 W/O IR 863 (BEANS CNR RD)	C	I+II	780	.	.	930	.
25 HARTLAND	00901	00431	COMMERCIAL ST N/O SR 23/43/152 (ACADEMY)	T	I	1670	.	1390	.	.
25 HARTLAND	01600	00431	COMMERCIAL ST @ ST ALBANS TL	C	I	940	.	.	840	.
25 HARTLAND	00408	0043X	SR 43/151 (PLEASANT ST) NW/O SR 23(MAIN)	C	I	.	.	2410	2230	.
25 HARTLAND	00201	00841	MILL ST N/O SR 23/43/151 (MAIN ST)	T	I	.	.	760	.	.
25 HARTLAND	00904	0151X	SR 151 (ELM) SE/O SR 23/43/152 (ACADEMY)	C	I	2530	.	2060	2710	.
25 HARTLAND	00205	0152X	SR 152(PITTSFIELD)S/O SR 23/43/151(MAIN)	T	I	.	.	2850	.	.
25 HARTLAND	00700	0152X	SR 152 (PITTSFIELD AVE) @ PALMYRA TL	C	I	3010	.	.	.	.
25 HARTLAND	00301	01816	MOORE ST N/O SR 23/43/151 (MAIN ST)	T	I	.	.	120	.	.
25 HIGHLAND PLT	32403	01366	IR 1366 (LONG FALLS) E/O IR 801 @BR#3950	C	I	250	.	.	360	.
25 JACKMAN	30800	0006X	SR 6/15 @ LONG POND TWP TL	C	II+III	.	810	.	.	.
25 JACKMAN	30903	0006X	SR 6/15 E/O US 201	C	II+III	.	1180	.	.	.
25 JACKMAN	30908	0006X	SR 6/US 201 NW/O SR 6/15	C	II	.	3200	.	.	.
25 JACKMAN	31008	0006X	SR 6/US 201 NW/O IR 970(COBURN AVE EAST)	C	II	.	4130	.	.	.
25 JACKMAN	31105	0006X	SR 6/US 201 S/O IR 710 (HEALD STREAM RD)	C	II	.	3490	.	.	.
25 JACKMAN	31103	00710	IR 710 (HEALD STREAM RD) E/O SR 6/US 201	C	II	.	980	.	.	.
25 JACKMAN	37903	00710	IR 710 (HEALD STR RD) E/O IR 712 (RIVER)	C	II	.	440	.	.	.
25 JACKMAN	37907	00710	IR 710 (HEALD STR) W/O IR 712 @ BR# 3585	C	II	.	480	.	.	.
25 JACKMAN	37905	00712	IR 712 (RIVER RD) S/O IR 710 (HEALD STR)	C	II	.	70	.	.	.
25 JACKMAN	38003	00714	IR 714 (HASTING) E/O IR 710 (HEALD STR)	C	II	.	150	.	.	.
25 JACKMAN	31002	00970	IR 970(COBURN AVE EAST) NE/O SR 6/US 201	C	I	.	100	.	.	.
25 JACKMAN	31006	00970	IR 970(COBURN AVE WEST) SW/O SR 6/US 201	C	I	.	380	.	.	.
25 JACKMAN	34307	00974	IR 974 (FOREST ST) W/O IR 980(SPRUCE ST)	T	II	.	.	160	.	.
25 JACKMAN	34306	00980	IR 980(SPRUCE ST) SW/O IR 974(FOREST ST)	T	II	.	.	250	.	.
25 JACKMAN	30906	01015	IR 1015 (ATTEAN LAKE RD) SW/O US 201	C	II+III	.	190	.	.	.
25 JACKMAN	30904	0201X	US 201 SE/O SR 6/15	C	II	.	2100	.	.	.
25 JACKMAN	34304	0201X	US 201 SE/O IR 974 (SPRUCE ST)	T	II	.	.	4300	.	.
25 JACKMAN	34308	0201X	US 201 NW/O IR 974 (SPRUCE ST)	T	II	.	.	4360	.	.
25 JACKMAN	37000	0201X	US 201 @ PARLIN POND TWP TL	C	II	.	1820	.	.	.

## 2007 Maine Transportation Count Book

## Somerset

TOWN	STATION	ROAD	LOCATION	TYPE	GROUP	AADT03	AADT04	AADT05	AADT06	AADT07
25 JOHNSON MT TWP	34000	0201X	US 201 @ W FORKS TL	C	II	.	1610	.	.	.
25 JOHNSON MT TWP	34100	0201X	US 201 @ PARLIN POND TWP TL	C	II	.	1720	.	.	.
25 LEXINGTON TWP	44800	00637	IR 637 (BACK RD) @ BR# 5523	C	I	.	.	.	20	.
25 LEXINGTON TWP	50703	00637	IR 637 (BACK RD) E/O IR 1366 (N JCT)	C	I	.	.	.	40	.
25 LEXINGTON TWP	50608	01366	IR 1366 (LONG FALLS) NW/O IR 637 (S JCT)	C	I	530	.	.	600	.
25 LEXINGTON TWP	50701	01366	IR 1366 (LONG FALLS) N/O IR 637 (N JCT)	C	I	380	.	.	450	.
25 LONG POND TWP	35100	0006X	SR 6/15 @ SANDWICH ACADEMY GRANT TL	C	II+III	.	440	.	.	.
25 MADISON	00204	0008X	SR 8/US201A(OLD PT) SE/O FATHER RASLE RD	C	I	4060	.	.	3410	.
25 MADISON	00301	0008X	SR 8/US 201A (OLD PT AVE) N/O PERKINS ST	C	I	.	.	.	5340	.
25 MADISON	00905	0008X	SR 8/US 201A (OLD PT) S/O SR 148 (MAIN)	C	I	.	.	.	5580	.
25 MADISON	00907	0008X	SR 8/43/148/US 201A (MAIN ST) W/O SR 43	C	I	9580	.	.	8910	.
25 MADISON	02207	0008X	SR 8/43/148/US 201A (MAIN) W/O MAPLE ST	C	I	.	.	.	8610	.
25 MADISON	02403	0008X	SR 8/43/148/US 201A (MAIN) E/O WATER ST	C	I	10280	.	.	9510	.
25 MADISON	35904	00357	IR 357(WARD HILL RD) SE/O SR148(MAIN ST)	C	I	750	.	.	880	.
25 MADISON	35301	00359	IR 359(E MADISON) N/O IR374(LWR MILL RD)	C	II	800	.	.	820	.
25 MADISON	35401	00359	IR 359(E MADISON) N/O IR895(WHITE SCHL H	C	II	1350	.	.	1410	.
25 MADISON	35405	00359	IR 359(E MADISON) S/O IR895(WHITE SCHL H	C	II	1130	.	.	1130	.
25 MADISON	00101	00365	WESTON AVE N/O HOUGHTON ST	C	I	.	.	.	1240	.
25 MADISON	00105	00365	WESTON AVE S/O E HOUGHTON ST	C	I	.	.	.	1570	.
25 MADISON	01800	00365	WESTON AVE @ CUL (@ POLE# 1/35)	C	I	110	.	.	.	.
25 MADISON	02901	00365	WESTON AVE N/O BEAN ST	C	I	2270	.	.	2220	.
25 MADISON	42203	00374	IR 374 (LWR MILL) E/O IR 1271 @ BR# 3962	C	II	.	.	.	370	.
25 MADISON	00901	0043X	SR 43 (WESTON RD) N/O SR 148 (MAIN ST)	C	I	4240	.	.	4150	.
25 MADISON	01302	0043X	SR 43 (PARK ST) NE/O HARDY ST	C	I	.	.	.	1710	.
25 MADISON	01503	0043X	SR 43 (PARK ST) E/O WESTON AVE	C	I	1620	.	.	1530	.
25 MADISON	35203	0043X	SR 43(HORSETAIL HILL) E/O IR358(ROBBINS)	C	I	.	.	.	980	.
25 MADISON	35206	0043X	SR 43(THURSTON HILL) SW/O US201(LAKEWOOD	C	I	990	.	.	.	.
25 MADISON	35706	0043X	SR 43 (THURSTON HILL RD) SW/O IR 357	C	I	1670	.	.	.	.
25 MADISON	43903	0043X	SR 43 E/O IR 359 (S SOLON RD)	C	I	1250	.	.	1160	.
25 MADISON	35805	00509	IR 509 (RUSSELL RD) S/O SR 148 (MAIN ST)	C	I	850	.	.	900	.
25 MADISON	00404	00512	PREBLE AVE SE/O CEDAR ST @ CUL	C	I	.	.	.	780	.
25 MADISON	00504	00512	PREBLE AVE SE/O SR 8/US 201A (MAIN ST)	C	I	1380	.	.	1580	.
25 MADISON	35502	00895	IR 895(WHITE SCHOOLHOUSE RD) NE/O US 201	C	II	.	.	.	600	.
25 MADISON	00103	01278	E HOUGHTON ST E/O WESTON AVE	C	I	.	.	.	230	.

# 2007 Maine Transportation Count Book

County

Somerset

TOWN	STATION	ROAD	LOCATION	TYPE	GROUP	AADT03	AADT04	AADT05	AADT06	AADT07
25 MADISON	00107	01278	HOUGHTON ST W/O WESTON AVE	C	I	.	.	.	270	.
25 MADISON	00903	0148X	SR 148 (MAIN ST) E/O SR 43 (WESTON RD)	C	I	8140	.	.	7910	.
25 MADISON	01103	0148X	SR 148 (MAIN) 0.2 MI E/O GARDEN ST @ CUL	C	I	6670	.	.	6530	.
25 MADISON	35507	0148X	SR 148 (WHITE SCHOOLHOUSE RD) W/O US 201	C	I	4910	.	.	4930	.
25 MADISON	35906	0148X	SR 148(MAIN ST) SW/O IR357(WARD HILL RD)	C	I	5530	.	.	5670	.
25 MADISON	35205	0201X	US 201(LAKEWOOD) S/O SR43(THURSTON HILL)	C	II	3700	.	.	3650	.
25 MADISON	35504	0201X	US 201 (LAKEWOOD RD) SE/O SR 148	C	II	8960	.	.	9270	.
25 MADISON	35508	0201X	US 201 (LAKEWOOD RD) NW/O SR 148	C	II	4480	.	.	4790	.
25 MADISON	46101	0201X	US 201 (LAKEWOOD RD) N/O IR 827 (N JCT)	C	II	3720	.	.	3840	.
25 MADISON	55300	0201X	US 201 @ SKOWHEGAN TL	C	II	10480	.	.	9890	.
25 MAYFIELD TWP	32503	0016X	SR 16 E/O SR 151@ BR# 2525	C	II	.	570	.	.	.
25 MAYFIELD TWP	32507	0016X	SR 16 W/O SR 151	C	II	.	420	.	.	.
25 MERCER	36902	0002X	US 2 NE/O IR 562 (MAIN ST)	C	ATR36907	4870	.	.	4780	.
25 MERCER	36906	0002X	US 2 SW/O IR 562 (MAIN ST)	C	ATR36907	4720	.	.	4690	.
25 MERCER	38603	0002X	US 2 E/O SR 137	C	ATR36907	5070	.	.	4680	.
25 MERCER	48500	0002X	US 2 @ NEW SHARON TL	C	ATR36907	4750	.	.	4620	.
25 MERCER	36904	00562	IR 562 (MAIN ST) SE/O US 2	C	I	470	.	.	490	.
25 MOOSE RIVER	31201	0006X	SR 6/US 201 N/O IR 704 (PLEASANT ST)	C	II	.	2210	.	.	.
25 MOOSE RIVER	31205	0006X	SR 6/US 201 S/O IR 704 (PLEASANT ST)	C	II	.	2510	.	.	.
25 MOOSE RIVER	31203	00704	IR 704 (PLEASANT ST) E/O SR 6/US 201	C	II	.	290	.	.	.
25 MOOSE RIVER	38101	00704	IR 704 (PLEASANT) N/O IR 710 (HEALD STR)	C	II+III	.	40	.	.	.
25 MOOSE RIVER	38104	00710	IR 710 (HEALD STREAM) SE/O IR 704	C	II	.	130	.	.	.
25 MOOSE RIVER	38807	01613	IR 1613(SANDY STR RD) W/O SR 6/US201 @BR	C	II	.	150	.	.	.
25 MOSCOW	42202	0016X	SR 16 NE/O IR 619 (STREAM RD) @MOSCOW TL	C	II	.	1220	.	.	.
25 MOSCOW	43103	0016X	SR 16 E/O IR 625 (MESSER RD)	C	II	.	470	.	.	.
25 MOSCOW	40802	00619	IR 619 NE/O IR 943 @ BR #5531	C	II	.	440	.	.	.
25 MOSCOW	40803	00619	IR 619 (STREAM RD) E/O IR 2028 @BR# 5675	C	II	.	390	.	.	.
25 MOSCOW	42201	00619	IR 619 (STREAM RD) N/O SR 16 @ MOSCOW TL	C	II	.	690	.	.	.
25 MOSCOW	43301	00621	IR 621 (PIERCE HILL RD) N/O US 201	C	II	.	180	.	.	.
25 MOSCOW	40808	00623	IR 623 (BURNS) NW/O IR 619 (STREAM RD)	C	II	.	70	.	.	.
25 MOSCOW	43102	00625	IR 625 (MESSER RD) NE/O SR 16	C	II	.	170	.	.	.
25 MOSCOW	33502	00905	IR 905 (DONIGAN RD) NE/O US 201	C	II	.	440	.	.	.
25 MOSCOW	33508	0201X	US 201 NW/O IR 905 (DONIGAN RD)	C	II	.	3900	.	.	.
25 MOSCOW	43307	0201X	US 201 W/O IR 621 (PIERCE HILL RD)	C	II	.	2780	.	.	.

# 2007 Maine Transportation Count Book

County

Somerset

TOWN	STATION	ROAD	LOCATION	TYPE	GROUP	AADT03	AADT04	AADT05	AADT06	AADT07
25 MOSCOW	40806	02028	IR 2028 (CHAS FRITH) SW/O IR 619(STREAM)	C	II	.	210	.	.	.
25 NEW PORTLAND	33804	0016X	SR 16 SE/O IR 1366 (LONG FALLS) @BR#5336	C	II	1920	.	.	1900	.
25 NEW PORTLAND	33907	0016X	SR 16 W/O SR 146	C	II	1490	.	.	1540	.
25 NEW PORTLAND	57300	0027X	SR 27 0.2 MI S/O KINGFIELD TL	A	ATR57300	2270	2260	2330	2240	2300
25 NEW PORTLAND	34706	0027X	SR 27 SW/O IR 618 (CHICK RD)	C	ATR57300	.	.	.	3030	.
25 NEW PORTLAND	35000	0027X	SR 27 @ NEW VINEYARD TL	C	ATR57300	2700	.	.	2790	.
25 NEW PORTLAND	33108	00614	IR 614 (MIDDLE ST) NW/O SR 146	C	I	150	.	.	90	.
25 NEW PORTLAND	33808	01366	IR 1366 (LONG FALLS RD) NW/O IR 671	C	I	740	.	.	860	.
25 NEW PORTLAND	57208	01382	IR 1382 (TANNERY) NW/O SR 146 @ BR# 3385	C	I	80	.	.	.	.
25 NEW PORTLAND	33905	0146X	SR 146 S/O SR 16	C	I	450	.	.	420	.
25 NEW PORTLAND	34401	0146X	SR 146 N/O IR 673 (NEW PORTLAND)@BR#5131	C	I	660	.	.	610	.
25 NEW PORTLAND	34407	0146X	SR 146 W/O IR 982 (SAFFORD RD)	C	I	570	.	.	520	.
25 NEW PORTLAND	34803	0146X	SR 146 E/O IR1381(OLD KINGFIELD)@BR#2322	C	I	700	.	.	690	.
25 NORRIDGEWOCK	00203	0002X	US 2/201A/SR 8 (MAIN ST) E/O PERKINS ST	C	I	9760	.	.	.	.
25 NORRIDGEWOCK	00206	0002X	US 2 (MERCER RD) SW/O US 2/201	C	ATR36907	7580	.	.	7680	.
25 NORRIDGEWOCK	00500	0002X	US 2/201A (SKOWHEGAN RD) @ CUL	C	II	5760	.	.	.	.
25 NORRIDGEWOCK	01107	0002X	US 2/201A/SR 8 (MAIN) W/O SR 8(MECHANIC)	C	I	10990	.	.	.	.
25 NORRIDGEWOCK	46806	0002X	US 2(MERCER RD) SW/O IR 553(WILDER HILL)	C	ATR36907	6020	.	.	5620	.
25 NORRIDGEWOCK	00101	0008X	SR 8/US 201A (NEW MADISON) N/O RIVER RD	C	I	.	.	.	4860	.
25 NORRIDGEWOCK	00201	0008X	SR 8/US 201A (BRIDGE) N/O US 2/201A/SR8	C	I	.	.	.	7020	.
25 NORRIDGEWOCK	01005	0008X	SR 8 (SMITHFIELD RD) S/O PERKINS ST	C	II	3090	.	.	2950	.
25 NORRIDGEWOCK	01106	0008X	SR 8 (MECHANIC) SW/O US 2/201A (MAIN)	C	II	2540	.	.	.	.
25 NORRIDGEWOCK	42508	0008X	SR 8/US 201A NW/O IR 2024 (N JCT)	C	I	3900	.	.	3580	.
25 NORRIDGEWOCK	46408	0008X	SR 8/US201A NW/O IR2023(FATHER R)(S JCT)	C	I	3440	.	.	3320	.
25 NORRIDGEWOCK	01508	00520	WINDING HILL RD NW/O WADE ST	C	I	550	.	.	550	.
25 NORRIDGEWOCK	46808	00522	IR 522 (AIRPORT RD) NW/O US 2 (MERCER)	C	I	780	.	.	.	.
25 NORRIDGEWOCK	00204	00547	PERKINS ST SE/O US 2/201A/SR 8 (MAIN ST)	C	I	2210	.	.	2460	.
25 NORRIDGEWOCK	00402	00965	RIVER RD NE/O MAPLE ST	C	I	.	.	.	3220	.
25 NORRIDGEWOCK	00703	0139X	SR139(WTVL HILL)E/O US2/201A(SKOWHEGAN)	C	I	7050	.	.	.	.
25 NORRIDGEWOCK	00904	0139X	SR 139 (WTVL HILL) SE/O EVERETT ST	C	I	6200	.	.	.	.
25 PALMYRA	40302	0002X	US 2 NE/O SR 152	C	II	4890	.	.	4550	.
25 PALMYRA	40306	0002X	US 2 SW/O SR 152	C	II	4230	.	.	3780	.
25 PALMYRA	40403	0002X	US 2 E/O IR 437 (LANG HILL RD)	C	II	7160	.	.	7430	.
25 PALMYRA	40407	0002X	US 2 W/O IR 437 (LANG HILL RD) @BR# 2644	C	II	7400	.	.	7470	.

# 2007 Maine Transportation Count Book

County

Somerset

TOWN	STATION	ROAD	LOCATION	TYPE	GROUP	AADT03	AADT04	AADT05	AADT06	AADT07	
25	PALMYRA	54106	0011X	SR 11/100 SW/O I-95 (NB) RAMPS	C	I	6330	.	.	6990	.
25	PALMYRA	53301	00426	IR 426 (WEBB RIDGE RD) N/O SR 151	C	I	.	.	.	270	.
25	PALMYRA	53305	00426	IR 426 (RAYMOND RD) S/O SR 151	C	I	.	.	.	550	.
25	PALMYRA	40402	00437	IR 437 (LANG HILL RD) NE/O US 2	C	I	930	.	.	810	.
25	PALMYRA	52901	00451	IR 451(ST ALBANS)N/O IR 427(SPRING HILL)	C	I	1380	.	.	1510	.
25	PALMYRA	52402	0095S	I-95 (SB) N/O ON RAMP FROM SR 11/100	I	ATR53104	6810	.	6010	.	6330
25	PALMYRA	52404	0095S	I-95 (SB) N/O OFF RAMP TO SR 11/100	I	ATR53104	9410	.	9410	.	9940
25	PALMYRA	52401	0095X	I-95 (NB) N/O OFF RAMP TO SR 11/100	I	ATR53103	6600	.	6170	.	6750
25	PALMYRA	52403	0095X	I-95 (NB) N/O ON RAMP FROM SR 11/100	I	ATR53103	9380	.	9400	.	10040
25	PALMYRA	42408	0151X	SR 151 NW/O IR 871 (DAVIS RD) @ BR# 5767	C	I	.	.	.	1550	.
25	PALMYRA	53303	0151X	SR 151 E/O IR 426 (RAYMOND RD)	C	I	1300	.	.	1370	.
25	PALMYRA	53308	0151X	SR 151 NW/O IR 426 (RAYMOND RD)	C	I	1470	.	.	1570	.
25	PALMYRA	54701	0151X	SR 151 N/O US 2	C	I	2690	.	.	2790	.
25	PALMYRA	40305	0152X	SR 152 S/O IR 1024 (HARRIS RD)	C	I	2880	.	.	2610	.
25	PALMYRA	40308	0152X	SR 152 NW/O US 2	C	I	3150	.	.	3060	.
25	PITTSFIELD	53607	0002X	US 2 W/O IR 493 (HIGGINS RD)	C	II	5290	.	.	4760	.
25	PITTSFIELD	53702	0002X	US 2 NE/O IR 863 (POWERS RD)	C	II	4630	.	.	.	.
25	PITTSFIELD	00206	0011X	SR 11/100(S MAIN) .3 MI SW/O MERRMAC@CUL	C	I	2930	.	.	2450	.
25	PITTSFIELD	00406	0011X	SR 11 (S MAIN ST) SW/O PELTOMA AVE	C	I	.	.	.	3890	.
25	PITTSFIELD	02002	0011X	SR 11/100 (N MAIN) NE/O SR 152 (PARK ST)	C	I	7330	.	.	6450	.
25	PITTSFIELD	02006	0011X	SR 11/100 (S MAIN ST) SW/O EASY ST	C	I	7800	.	.	6750	.
25	PITTSFIELD	03703	0011X	SR 11/100 (GROVE ST) E/O N MAIN ST	C	I	5790	.	.	5270	.
25	PITTSFIELD	03705	0011X	SR 11/100 (N MAIN) S/O SR 11/100 (GROVE)	C	I	6730	.	.	6140	.
25	PITTSFIELD	04103	0011X	SR11/100 (GROVE ST) E/O DOG TOWN RD	C	I	4840	.	.	4580	.
25	PITTSFIELD	53905	0011X	SR 11/100 S/O IR 470 (WEBB RD)	C	I	2370	.	.	2000	.
25	PITTSFIELD	03701	00449	N MAIN ST N/O SR 11/100 (GROVE ST)	C	I	2790	.	.	2540	.
25	PITTSFIELD	03900	00449	N MAIN ST @ CUL (@ POWER TRANS LINE)	C	I	1440	.	.	1250	.
25	PITTSFIELD	41101	00461	IR 461(PHILLIPS CNR) N/O IR466(SOMERSET)	C	I	1410	.	.	.	.
25	PITTSFIELD	41001	00463	IR 463 (SPRING RD) N/O IR 466 (SOMERSET)	C	I	630	.	.	560	.
25	PITTSFIELD	02307	00466	SOMERSET AVE W/O SR 152 (HARTLAND AVE)	C	I	7050	.	.	6740	.
25	PITTSFIELD	02707	00466	SOMERSET AVE W/O INDUSTRIAL PARK RD	C	I	6360	.	.	5900	.
25	PITTSFIELD	41003	00466	IR 466 (SOMERSET) E/O IR 463 (SPRING)	C	I	3190	.	.	2810	.
25	PITTSFIELD	41007	00466	IR 466 (SOMERSET) W/O IR 463 (SPRING)	C	I	2630	.	.	2310	.
25	PITTSFIELD	53908	00470	IR 470 (WEBB RD) NW/O SR 11/100	C	I	350	.	.	340	.

# 2007 Maine Transportation Count Book

County

Somerset

TOWN	STATION	ROAD	LOCATION	TYPE	GROUP	AADT03	AADT04	AADT05	AADT06	AADT07
PITTSFIELD	03608	00474	DETROIT AVE NW/O LIVINGSTON ST	C	I	1190	.	.	1050	.
PITTSFIELD	00404	00483	PELTOMA AVE SE/O SR 11/100 (S MAIN ST)	C	I	2790	.	.	2300	.
PITTSFIELD	00800	00483	PELTOMA AVE @ W END OF VILLAGE CEM @CUL	C	I	1740	.	.	1380	.
PITTSFIELD	53605	00493	IR 493 (HIGGINS RD) S/O US 2	C	I	610	.	.	930	.
PITTSFIELD	00900	0069X	SR 69 (LWR DETROIT) @ CUL @ POL# 37/91	C	I	1680	.	.	1510	.
PITTSFIELD	01603	0069X	SR 69 (HUNNEWELL) E/O SR 11/100 (S MAIN)	C	I	2780	.	.	2490	.
PITTSFIELD	53701	00863	IR 863 (POWERS RD) N/O US 2	C	I	150	.	.	150	.
PITTSFIELD	52502	0095S	I-95 (SB) N/O ON RAMP FROM SOMERSET AVE	I	ATR53104	7770	.	7770	.	8410
PITTSFIELD	52504	0095S	I-95 (SB) N/O OFF RAMP TO SOMERSET AVE	I	ATR53104	8790	.	8480	.	8980
PITTSFIELD	52501	0095X	I-95 (NB) N/O OFF RAMP TO SOMERSET AVE	I	ATR53103	7570	.	7450	.	7870
PITTSFIELD	52503	0095X	I-95 (NB) N/O ON RAMP FROM SOMERSET AVE	I	ATR53103	8570	.	8300	.	8560
PITTSFIELD	02705	01061	INDUSTRIAL PK RD S/O SOMERSET AVE	C	I	2560	.	.	2260	.
PITTSFIELD	00505	01136	HIGHLAND AVE S/O SOMERSET ST	C	I	.	.	.	170	.
PITTSFIELD	02305	01139	FOREST ST S/O SOMERSET AVE	C	I	.	.	.	1180	.
PITTSFIELD	00607	01151	WAVERLY AVE W/O N MAIN ST	C	I	.	.	.	1080	.
PITTSFIELD	03002	01151	WAVERLY AVE NE/O SR 152 (HARTLAND AVE)	C	I	.	.	.	1110	.
PITTSFIELD	02108	0152X	SR 152 (PARK ST) NW/O MIDDLE ST	C	I	6290	.	.	5800	.
PITTSFIELD	02301	0152X	SR 152 (HARTLAND AVE) N/O SOMERSET AVE	C	I	.	.	.	3320	.
PITTSFIELD	03001	0152X	SR 152 (HARTLAND AVE) N/O WAVERLY AVE	C	I	2600	.	.	2160	.
PITTSFIELD	00501	01550	SCHOOL ST N/O SOMERSET AVE	C	I	.	.	.	340	.
PITTSFIELD	02004	02000	EASY ST SE/O SR 11/100 (S MAIN ST)	C	I	420	.	.	.	.
PLEASANT RIDGE PLT	44301	00631	IR 631 (CARRY PD RD) N/O IR 992 @BR#1047	C	II	.	.	.	150	.
PLEASANT RIDGE PLT	44401	00631	IR 631 (CARRY POND RD) N/O IR 635	C	II	.	.	.	180	.
PLEASANT RIDGE PLT	44404	00631	IR 631 (RIDGE RD) SE/O IR 635 @ BR# 3085	C	II	.	.	.	370	.
PLEASANT RIDGE PLT	44201	00635	IR 635 (ROWE PD RD) N/O IR 992(CROSS RD)	C	II	.	.	.	120	.
PLEASANT RIDGE PLT	44205	00635	IR 635 (ROWE PD RD) S/O IR 992(CROSS RD)	C	II	.	.	.	130	.
PLEASANT RIDGE PLT	44407	00635	IR 635 (ROWE PD RD) W/O IR 631(RIDGE RD)	C	II	.	.	.	260	.
PLEASANT RIDGE PLT	44307	00992	IR 992(CROSS RD) W/O IR 631(CARRY PD RD)	C	II	.	.	.	30	.
RIPLEY	39003	0023X	SR 23 (MAIN ST) E/O IR 531 (WATER ST)	C	I	1030	.	.	900	.
RIPLEY	39005	0023X	IR 531(WATER ST) S/O SR 23/154(W RIPLEY)	C	I	390	.	.	340	.
RIPLEY	48402	0023X	SR 23 (MAIN ST) NE/O IR 1189 (ELLSMS RD)	C	I	1110	.	.	1000	.
RIPLEY	38901	0152X	SR 152(PAGE HILL RD) N/O SR154(STREAM RD)	C	I	500	.	.	520	.
RIPLEY	38905	0152X	SR 23/152 S/O SR 23/154 (W RIPLEY RD)	C	I	1080	.	.	1050	.
RIPLEY	38903	0154X	SR 23/154 (W RIPLEY RD) E/O SR 152	C	I	650	.	.	590	.

## 2007 Maine Transportation Count Book

## Somerset

TOWN	STATION	ROAD	LOCATION	TYPE	GROUP	AADT03	AADT04	AADT05	AADT06	AADT07
25 RIPLEY	38907	0154X	SR 154(STREAM RD) W/O SR152(PAGE HILL RD	C	I	720	.	.	670	.
25 RIPLEY	39007	0154X	SR 23/154(W RIPLEY RD) W/O IR531@BR#3474	C	I	820	.	.	710	.
25 ROCKWOOD STRIP T1 R1	30503	0006X	SR 6/15 E/O IR 759 (PITTSTON FARM RD)	C	III	.	1300	.	.	.
25 ROCKWOOD STRIP T1 R1	30507	0006X	SR 6/15 W/O IR 759 (PITTSTON FARM RD)	C	III	.	980	.	.	.
25 ROCKWOOD STRIP T1 R1	39606	00736	IR 736 (MAYNARD RD) SW/O IR 759	C	III	.	240	.	.	.
25 ROCKWOOD STRIP T1 R1	30501	00759	IR 759 (PITTSTON FARM RD) N/O SR 6/15	C	III	.	790	.	.	.
25 ROCKWOOD STRIP T1 R1	39601	00759	IR 759 (PITTSTON FARM RD) N/O IR 736	C	III	.	470	.	.	.
25 SANDWICH ACADEMY GR	56300	0006X	SR 6/15 @ TAUNTON & RAYNHAM ACADEMY TL	C	II+III	.	480	.	.	.
25 SANDY BAY TWP	31500	0006X	SR 6/US 201 @ US CUSTOMS	C	II	.	1530	.	.	.
25 SAPLING TWP	30100	0006X	SR 6/15 @ BR# 3256	C	III	.	1220	.	.	.
25 SKOWHEGAN	01606	0002X	US 2/201(ISLAND AVE) SW/O US2/201(WATER)	A	ATR01606	.	.	21330	21080	.
25 SKOWHEGAN	00301	0002X	US 2/US 201 (ISLAND) N/O US 201(E FRONT)	T	II	.	.	.	22470	.
25 SKOWHEGAN	00307	0002X	US 2/201A (W FRONT ST) W/O SR 104 (MAIN)	T	ATR56204	10970	.	.	9280	.
25 SKOWHEGAN	01506	0002X	US 2/201A (W FRONT ST) SW/O SCHOOL ENT	C	II	6150	.	.	.	.
25 SKOWHEGAN	01603	0002X	US 2 (WATER ST) E/O US 201 (MADISON AVE)	T	II	.	.	.	14380	13040
25 SKOWHEGAN	01802	0002X	US 2 (WATER ST) NE/O RUSSELL ST	T	II	.	.	.	.	9500
25 SKOWHEGAN	02103	0002X	US 2 (WATER ST) E/O MALBONS MILL RD	C	II	8260	.	.	7770	.
25 SKOWHEGAN	02503	0002X	US 2/201(COMMERCIAL) E/O US 201(MADISON)	T	I	.	.	.	10860	10410
25 SKOWHEGAN	07302	0002X	US 2/201A (W FRONT ST) NE/O MCLELLAN ST	C	II	10360	.	.	8760	.
25 SKOWHEGAN	50403	0002X	US 2 E/O IR 391 (E RIDGE RD)	C	II	6220	.	.	5890	.
25 SKOWHEGAN	50407	0002X	US 2 W/O IR 391 (EATON MTN RD)	C	II	6350	.	.	5880	.
25 SKOWHEGAN	50401	00391	IR 391 (E RIDGE RD) N/O US 2	C	I	840	.	.	860	.
25 SKOWHEGAN	00401	00403	W RIDGE RD N/O NOTCH RD	C	I	810	.	.	.	.
25 SKOWHEGAN	00406	00403	MALBONS MILL RD SW/O NOTCH RD	C	I	1380	.	.	.	.
25 SKOWHEGAN	00403	00410	NOTCH RD E/O DUDLEY CNR RD	C	I	630	.	.	630	.
25 SKOWHEGAN	51006	00527	IR 527 (VARNEY RD) SW/O US 201	C	I	2440	.	.	2790	.
25 SKOWHEGAN	00305	0104X	SR 104 (MAIN ST) S/O US 201 (E FRONT ST)	T	I	.	.	.	7180	.
25 SKOWHEGAN	01004	0104X	SR 104 (FAIRVIEW AVE) SE/O STEVENS ST	C	I	3110	.	.	2690	.
25 SKOWHEGAN	01104	0104X	SR 104 (FAIRVIEW AVE) SE/O HATHAWAY ST	C	I	5580	.	.	4960	.
25 SKOWHEGAN	54801	0104X	SR 104 (MIDDLE RD) N/O IR 527 (VARNEY)	C	I	2580	.	.	2140	.
25 SKOWHEGAN	00206	0150X	SR 150 (NORTH ST) SW/O MOLUNKUS RD	S	I	.	.	.	.	3540
25 SKOWHEGAN	01901	0150X	SR 150 (NORTH AVE) N/O CROSS ST	T	I	.	.	.	.	4000
25 SKOWHEGAN	02201	0150X	SR 150 (NORTH AVE) N/O HIGH ST	T	I	8700	.	.	7480	6790
25 SKOWHEGAN	03001	0150X	SR 150 (NORTH AVE) N/O HESELTON ST	C	I	10010	.	.	9060	.

# 2007 Maine Transportation Count Book

County

Somerset

TOWN	STATION	ROAD	LOCATION	TYPE	GROUP	AADT03	AADT04	AADT05	AADT06	AADT07	
25	SKOWHEGAN	04201	0150X	SR 150 (NORTH AVE) N/O CUT TO JEWETT ST	C I	9060	.	.	9150	.	
25	SKOWHEGAN	04205	0150X	SR 150 (NORTH AVE) S/O JEWETT ST	C I	.	.	.	7030	.	
25	SKOWHEGAN	04402	0150X	SR 150 (NORTH AVE) NE/O STEWART HILL RD	C I	.	.	.	3770	.	
25	SKOWHEGAN	56204	0201X	US 201 SE/O IR 2177 (CEMETERY RD)	A	ATR56204	5790	5820	5870	6030	5920
25	SKOWHEGAN	00303	0201X	US 201 (E FRONT ST) E/O SR 104 (MAIN)	T II	.	.	.	12700	.	
25	SKOWHEGAN	00701	0201X	US 201 (MADISON AVE) N/O MAPLE ST	C II	.	.	.	17960	.	
25	SKOWHEGAN	00903	0201X	US 201 (E FRONT) E/O DRIVE-IN ENT	C II	7170	.	.	.	.	
25	SKOWHEGAN	01601	0201X	US 201 (MADISON AVE) N/O US 2 (WATER ST)	T II	.	.	.	.	12680	
25	SKOWHEGAN	02501	0201X	US 201 (MADISON AVE) N/O ELM ST	T II	.	.	.	.	14740	
25	SKOWHEGAN	02801	0201X	US 201 (MADISON AVE) N/O HIGH ST	T II	17180	.	.	18200	17980	
25	SKOWHEGAN	03205	0201X	US 201 (MADISON AVE) S/O WINTER ST	C II	17910	.	.	17440	.	
25	SKOWHEGAN	03905	0201X	US 201 (MADISON AVE) S/O E MADISON RD	C II	14950	.	.	16680	.	
25	SKOWHEGAN	04001	0201X	US 201 (MADISON AVE) N/O PARK ST	C II	.	.	.	16510	.	
25	SKOWHEGAN	01707	20011	BLOOMFIELD ST W/O MAIN ST	C I	.	.	.	620	.	
25	SKOWHEGAN	01801	20022	COURT ST N/O COMMERCIAL ST	T I	.	.	.	.	790	
25	SKOWHEGAN	02507	20035	ELM ST W/O US 201 (MADISON AVE)	T I	.	.	.	.	1790	
25	SKOWHEGAN	01103	20046	HATHAWAY ST E/O SR 104 (FAIRVIEW AVE)	C I	1620	.	.	980	.	
25	SKOWHEGAN	03003	20047	HESELTON ST E/O SR 150 (NORTH AVE)	C I	1360	.	.	1130	.	
25	SKOWHEGAN	02203	20048	HIGH ST E/O SR 150 (NORTH AVE)	T I	3620	.	.	3370	5570	
25	SKOWHEGAN	02207	20048	HIGH ST W/O SR 150 (NORTH AVE)	T I	.	.	.	.	6990	
25	SKOWHEGAN	02803	20048	HIGH ST E/O US 201 (MADISON AVE)	T I	.	.	.	.	6200	
25	SKOWHEGAN	04003	20050	JEWETT ST E/O US 201 (MADISON AVE)	C I	5180	.	.	4790	.	
25	SKOWHEGAN	04207	20050	JEWETT ST W/O CUT TO SR 150 (NORTH AVE)	C I	.	.	.	4660	.	
25	SKOWHEGAN	01301	20057	MAIN ST N/O BIGELOW HILL RD	C I	.	.	.	1960	.	
25	SKOWHEGAN	07505	20057	MAIN ST S/O WILLOW ST	C I	2280	.	.	2350	.	
25	SKOWHEGAN	07304	20062	MCLELLAN ST SE/O US 2/201A (W FRONT ST)	C I	1460	.	.	1150	.	
25	SKOWHEGAN	02606	20071	NORRIDGEWOCK AVE SW/O MARY ST (PW)	C I	.	.	.	3150	.	
25	SKOWHEGAN	02807	20082	PLEASANT ST W/O US 201 (MADISON AVE)	T I	.	.	.	3930	3920	
25	SKOWHEGAN	07506	20128	WILLOW ST SW/O MAIN ST	C I	1800	.	.	1160	.	
25	SKOWHEGAN	03203	20130	WINTER ST E/O US 201 (MADISON AVE)	C I	850	.	.	780	.	
25	SKOWHEGAN	03901	20135	E MADISON RD N/O US 201 (MADISON AVE)	C II	1320	.	.	1220	.	
25	SKOWHEGAN	04401	20145	STEWART HILL RD N/O SR 150 (NORTH AVE)	C I	.	.	.	700	.	
25	SMITHFIELD	37302	0008X	SR 8 NE/O SR 137	C II	1780	.	.	1820	.	
25	SMITHFIELD	37304	0008X	SR 8/137 SE/O SR 8 @ BR# 3466	C II	2250	.	.	2560	.	

# 2007 Maine Transportation Count Book

County

Somerset

TOWN	STATION	ROAD	LOCATION	TYPE	GROUP	AADT03	AADT04	AADT05	AADT06	AADT07
SMITHFIELD	41205	0008X	SR 8 S/O IR 1036 (WARREN HILL RD)	C	II	1410	.	.	1610	.
SMITHFIELD	47202	0008X	SR 8 NE/O IR 554 (SAND HILL RD)	C	II	2290	.	.	2430	.
SMITHFIELD	47206	0008X	SR 8 SW/O IR 559 (E POND RD)	C	II	.	.	.	1910	.
SMITHFIELD	47204	00559	IR 559 (E POND RD) SE/O SR 8	C	II	800	.	.	1020	.
SMITHFIELD	37207	00562	IR 562 (N SHORE RD) W/O SR 137	C	III	460	.	.	.	.
SMITHFIELD	41204	01036	IR 1036 (WARREN HILL RD) SE/O SR 8	C	I	90	.	.	.	.
SMITHFIELD	37208	0137X	SR 137 NW/O IR 615 (OAK HILL RD)	C	II	370	.	.	320	.
SMITHFIELD	37308	0137X	SR 137 NW/O SR 8	C	II	1050	.	.	1130	.
SMITHFIELD	37403	0137X	SR 137 E/O SR 8	C	II	2750	.	.	2960	.
SMITHFIELD	37407	0225X	SR 225 W/O SR 8/137	C	II	1730	.	.	1700	.
SOLON	32906	0008X	SR 8/US 201A (FERRY) SW/O US 201(S MAIN)	C	I	2200	.	.	2230	.
SOLON	43702	00335	IR335(BRIGHTON) NE/O IR338(FRENCH HILL)	C	I	290	.	.	200	.
SOLON	32903	00338	IR 338 (PLEASANT ST) E/O US 201 (S MAIN)	C	I	.	.	.	660	.
SOLON	43703	00338	IR 338(FRENCH HILL) E/O IR 335(BRIGHTON)	C	I	270	.	.	340	.
SOLON	43803	00338	IR 338 (HOLE IN WALL) E/O IR 359@BR#2556	C	I	.	.	.	120	.
SOLON	49303	00338	IR 338 (PLEASANT ST) E/O IR 829 (SCHOOL)	C	I	820	.	.	750	.
SOLON	56501	00357	IR 357(RIVER) 0.5 MI N/O IR1256 @BR#1024	C	II	440	.	.	.	.
SOLON	43804	00359	IR 359(PARKMAN HILL) SE/O IR 338@BR#1025	C	I	.	.	.	100	.
SOLON	44104	00361	IR 361(S SOLON RD) SE/O US201(S MAIN ST)	C	II	220	.	.	.	.
SOLON	32904	0201X	US 201 (S MAIN ST) SE/O IR 338(PLEASANT)	C	II	.	.	.	4960	.
SOLON	44105	0201X	US 201(S MAIN ST) S/O IR 361(S SOLON RD)	C	II	4110	.	.	4530	.
SOLON	49001	0201X	US 201 (N MAIN ST) N/O IR 884 (CROSS ST)	C	I	4630	.	.	.	.
SOLON	49404	0201X	US 201(S MAIN ST) SE/O IR 829(SCHOOL ST)	C	II	4910	.	.	5050	.
ST ALBANS	45106	0023X	SR 23/43/152 SW/O IR 451(PALMYRA RD)	C	I	2600	.	.	2850	.
ST ALBANS	45503	0023X	SR 43 E/O IR 1020 (HIGH ST)	C	I	1810	.	.	.	.
ST ALBANS	54901	0023X	IR 531 (RIPLEY RD) N/O IR 438(DEXTER RD)	C	I	530	.	.	560	.
ST ALBANS	54906	0023X	IR 438(DEXTER RD) SW/O IR 437(MELODY LN)	C	I	570	.	.	580	.
ST ALBANS	54905	00437	IR 437 (MELODY LN) S/O IR 531(RIPLEY RD)	C	I	450	.	.	470	.
ST ALBANS	54902	00438	IR 438(DEXTER RD) NE/O IR 531(RIPLEY RD)	C	I	470	.	.	500	.
ST ALBANS	39503	0043X	SR 43 (CORINNA RD) E/O IR 438(DEXTER RD)	C	I	1100	.	.	1230	.
ST ALBANS	42303	0043X	SR 43 (CORINNA RD) E/O IR 437(SQUARE RD)	C	I	1210	.	.	1330	.
ST ALBANS	30405	00446	IR 446(NOKOMIS RD) S/O SR 43(CORINNA RD)	C	I	740	.	.	840	.
ST ALBANS	45004	00446	IR 446(NOKOMIS RD) SE/O IR 440 @ BR#5766	C	I	.	.	.	1050	.
ST ALBANS	45704	00451	IR 451(PALMYRA RD) SE/O IR 1020(HIGH ST)	C	I	1340	.	.	1490	.

## 2007 Maine Transportation Count Book

## Somerset

	TOWN	STATION	ROAD	LOCATION	TYPE	GROUP	AADT03	AADT04	AADT05	AADT06	AADT07
25	ST ALBANS	52602	00870	IR 870 (GRANT) NE/O SR 23/152(TODDS CNR)	C	I	480	.	.	480	.
25	ST ALBANS	45201	0152X	SR 23/152 N/O IR 433 (BIGELOW RD)	C	I	1930	.	.	2030	.
25	ST ALBANS	52608	0152X	SR 23/152 (TODDS CNR) NW/O IR 870(GRANT)	C	I	1330	.	.	1460	.
25	STARKS	36306	0043X	SR 43 SW/O SR 134	C	I	380	.	.	450	.
25	STARKS	36401	0043X	SR 43 N/O IR 731 (RIVER RD)	C	I	950	.	.	.	.
25	STARKS	36407	0043X	SR 43 W/O IR 731 (RIVER RD)	C	I	840	.	.	.	.
25	STARKS	46507	0043X	SR 43 W/O IR 665 (SAWYER MILLS RD)	C	I	800	.	.	890	.
25	STARKS	46200	00642	IR 642 (MAYHEW RD) @ BR# 1051	C	I	.	.	.	80	.
25	STARKS	46003	00665	IR 665(SAWYER MILLS) E/O SR 148 @BR#1055	C	I	.	.	.	60	.
25	STARKS	36304	0134X	SR 134 SE/O SR 43	C	I	320	.	.	270	.
25	STARKS	47108	0134X	SR 134 NW/O IR 711	C	I	300	.	.	.	.
25	TAUNTON AND RAYNHA	30208	0006X	SR 6/15 NW/O IR 1603 (TRANSFER STA RD)	C	III	.	1160	.	.	.
25	TAUNTON AND RAYNHA	30206	01603	IR 1603 (TRANSFER STA RD) SW/O SR 6/15	C	III	.	80	.	.	.
25	THE FORKS PLT	31903	00588	IR 588 (LAKE MOXIE RD) E/O US 201	C	III	.	360	.	.	.
25	THE FORKS PLT	31905	0201X	US 201 S/O IR 588 (MOXIE RD)	C	II	.	2310	.	.	.
25	THE FORKS PLT	31908	0201X	US 201 NW/O IR 588 (LAKE MOXIE RD)	C	II	.	2210	.	.	.
25	TWP 03 R 04 BKPWKR	32200	01417	IR 1417 (LONG FALLS RD) @ BR# 1075	C	I	50	.	.	.	.