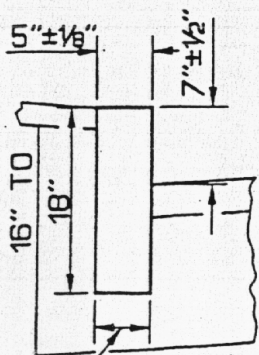
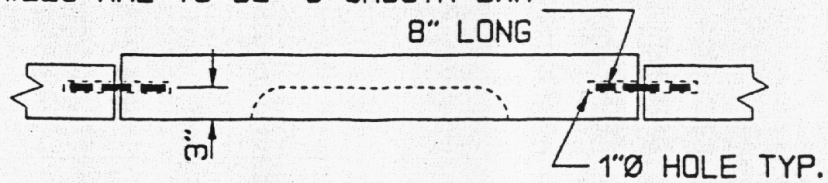


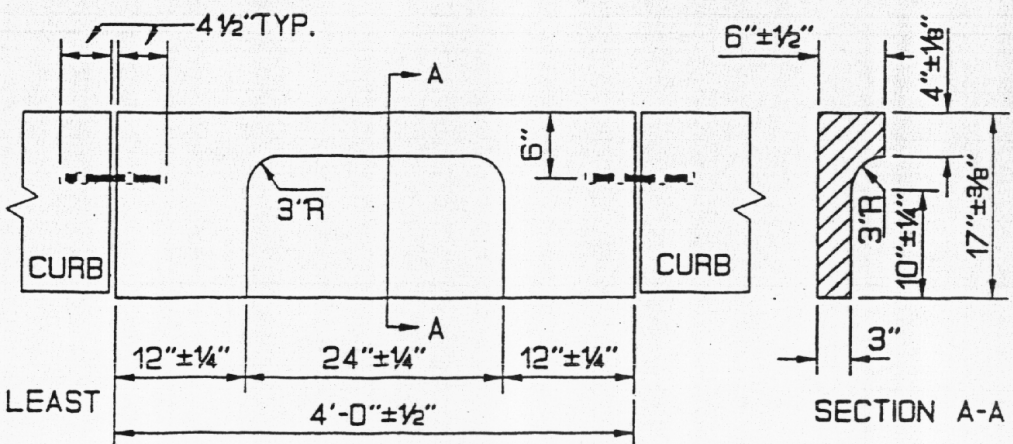
CURB MOLD 2 WILL BE USED IN ALL SITUATIONS EXCEPT FOR WHERE THE CURB FORMS THE EDGE OF THE SIDEWALK. MOLD 1 SHALL BE USED IN CONJUNCTION WITH SIDEWALKS OR WHERE THERE IS A POTENTIAL FOR SIDEWALKS.

CURB TYPE 3

DOWELS ARE TO BE #6 SMOOTH BAR
8" LONG



VERTICAL CURB
TYPE 1 & 2



CURB INLET

CURB