

State of Maine Pedestrian Crash History 2012-2016



State of Maine Bicycle Crash History 2012-2016

Prepared by:

**Maine Department of Transportation
Bureau of Maintenance and Operations
Traffic Engineering Division
Crash Records Section
16 State House Station
Augusta, Maine 04333-0016**

STATE OF MAINE
HIGHWAY PEDESTRIAN CRASHES
2012 - 2016

I. PREFACE 1

II. PEDESTRIAN CRASH TABLES AND CHARTS 2012-2016

Crashes Summarized by:

County	1-4
Severity	5-6
Rural/Urban Designation	7
Month	8
Day of Week	9
Time of Day	10
Age Groups	11
Age Groups by Gender	12
Apparent Physical Condition	13
Contributing Factors	14
Vehicle Type	15
Light Conditions	16
Weather Conditions	17
Road Surface Conditions	18

STATE OF MAINE

STATEWIDE PEDESTRIAN CRASHES

2012 - 2016

Preface

This publication is a statistical review of reported motor vehicle crashes that involved pedestrians in Maine during the five-year study period 2012- 2016. The statistics are compiled from crash reports submitted to the Department of Transportation by the Traffic Division, Department of Public Safety. The Traffic Division receives all police uniform crash reports Form 13:20 A, from state, county and local police agencies.

The enclosed charts, graphs, listings and summaries were produced using the Department of Transportation's Computerized Crash Records System. Except for adjustments to locations and crash-type information for accuracy, no attempt has been made to modify the raw data received from the reporting agencies. However, because crash scenes are often dangerous and chaotic, some inaccuracies in data collection are possible.

A comparison of this report with other summaries of crashes and fatalities may also reveal inconsistencies due to changes in crash classification, late submittals, and differing reporting criteria.

The Department of Transportation and the Department of Public Safety wish to express our sincere thank you to all law enforcement agencies and officers for the work they do on crash investigations. Without their dedication, this report would not be possible.

We welcome your comments and suggestions on this report at:

Maine Department of Transportation
Bureau of Maintenance and Operations
Traffic Engineering Division
Crash Records Section
16 State House Station
Augusta, ME 04333-0016

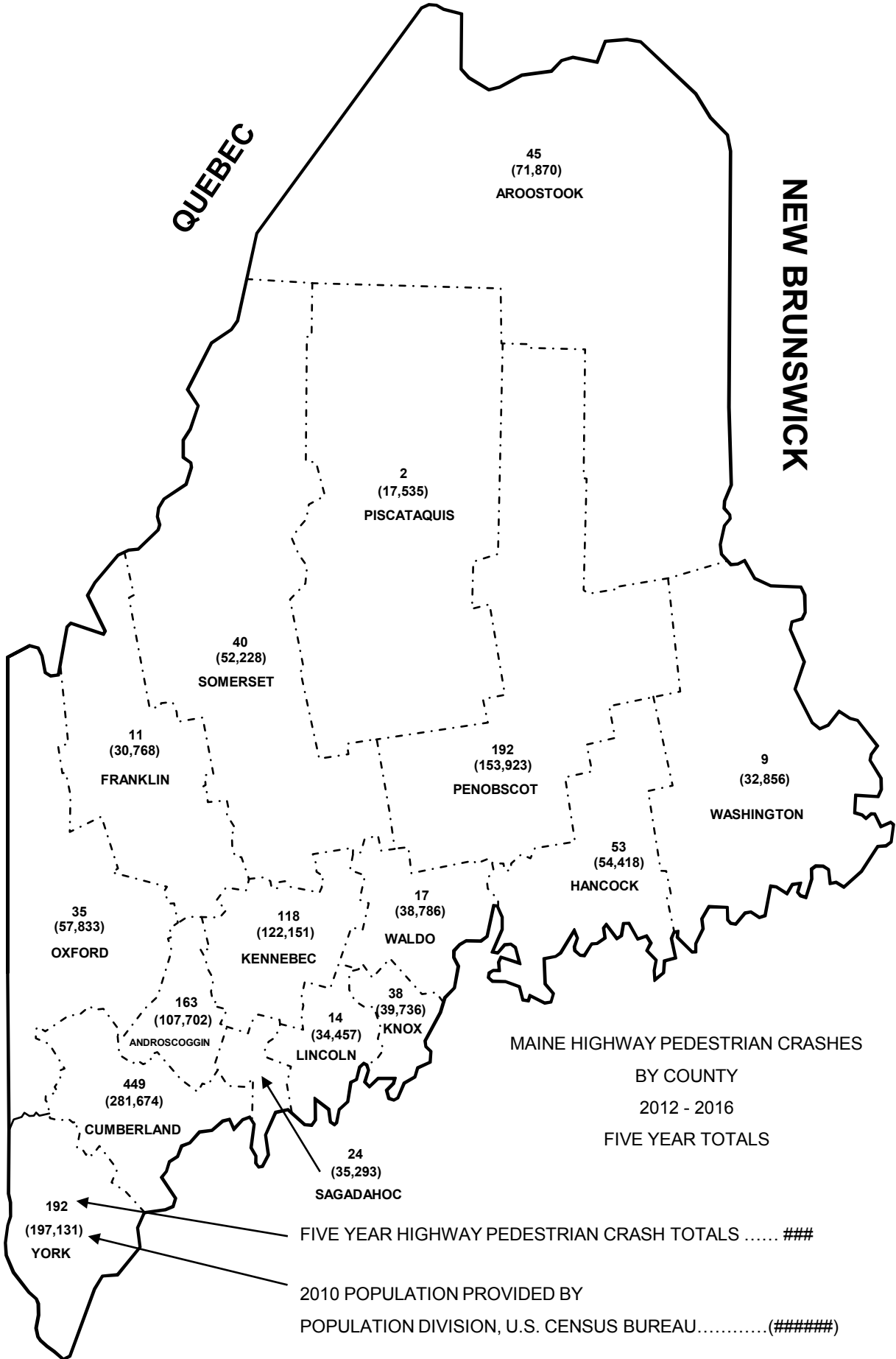
Tel: 207-624-3618

Fax: 207-624-3101

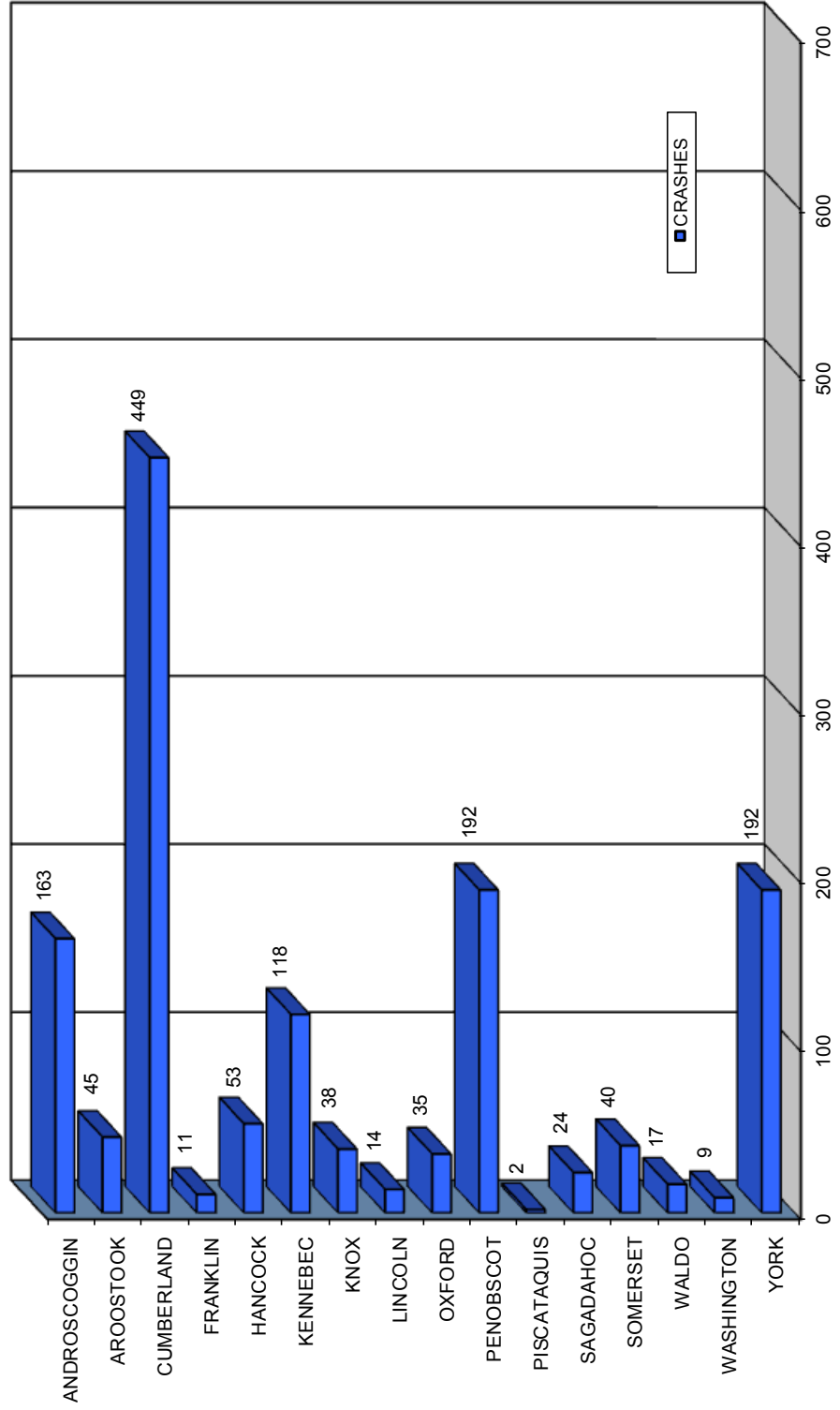




NEW HAMPSHIRE



MAINE HIGHWAY PEDESTRIAN CRASHES BY COUNTY 2012 - 2016



MAINE HIGHWAY PEDESTRIAN CRASH SEVERITY BY COUNTY

2012 - 2016

COUNTY	INJURY TYPE	2012	2013	2014	2015	2016	TOTAL CRASHES	PERCENT OF TOTAL
ANDROSCOGGIN Percent Personal Injury 91.41%	FATAL (K)	0	1	1	3	2	7	0.50%
	INCAPACITATING (A)	3	2	3	6	8	22	1.57%
	NON-INCAPACITATING (B)	9	8	10	9	4	40	2.85%
	POSSIBLE INJURY (C)	23	14	17	12	14	80	5.71%
	PROPERTY DAMAGE ONLY (PDO)	8	3	1	2	0	14	1.00%
	COUNTY SUBTOTAL		43	28	32	32	28	163
AROOSTOOK Percent Personal Injury 91.11%	FATAL (K)	0	0	0	0	1	1	0.07%
	INCAPACITATING (A)	2	3	2	1	1	9	0.64%
	NON-INCAPACITATING (B)	2	8	3	3	0	16	1.14%
	POSSIBLE INJURY (C)	2	4	2	3	4	15	1.07%
	PROPERTY DAMAGE ONLY (PDO)	0	0	2	2	0	4	0.29%
	COUNTY SUBTOTAL		6	15	9	9	6	45
CUMBERLAND Percent Personal Injury 97.33%	FATAL (K)	1	1	1	2	5	10	0.71%
	INCAPACITATING (A)	23	9	19	14	17	82	5.85%
	NON-INCAPACITATING (B)	34	22	27	25	28	136	9.70%
	POSSIBLE INJURY (C)	31	42	44	50	42	209	14.91%
	PROPERTY DAMAGE ONLY (PDO)	1	2	2	5	2	12	0.86%
	COUNTY SUBTOTAL		90	76	93	96	94	449
FRANKLIN Percent Personal Injury 100.00%	FATAL (K)	0	0	0	0	1	1	0.07%
	INCAPACITATING (A)	0	0	2	0	0	2	0.14%
	NON-INCAPACITATING (B)	2	0	0	1	0	3	0.21%
	POSSIBLE INJURY (C)	2	2	0	1	0	5	0.36%
	PROPERTY DAMAGE ONLY (PDO)	0	0	0	0	0	0	0.00%
	COUNTY SUBTOTAL		4	2	2	2	1	11
HANCOCK Percent Personal Injury 96.23%	FATAL (K)	1	0	1	3	0	5	0.36%
	INCAPACITATING (A)	4	2	1	2	3	12	0.86%
	NON-INCAPACITATING (B)	2	6	5	4	1	18	1.28%
	POSSIBLE INJURY (C)	3	3	3	3	4	16	1.14%
	PROPERTY DAMAGE ONLY (PDO)	0	0	0	1	1	2	0.14%
	COUNTY SUBTOTAL		10	11	10	13	9	53
KENNEBEC Percent Personal Injury 89.83%	FATAL (K)	2	0	0	1	1	4	0.29%
	INCAPACITATING (A)	7	3	3	2	1	16	1.14%
	NON-INCAPACITATING (B)	11	2	6	5	2	26	1.85%
	POSSIBLE INJURY (C)	11	7	15	17	10	60	4.28%
	PROPERTY DAMAGE ONLY (PDO)	1	2	2	4	3	12	0.86%
	COUNTY SUBTOTAL		32	14	26	29	17	118
KNOX Percent Personal Injury 100.00%	FATAL (K)	0	2	0	1	0	3	0.21%
	INCAPACITATING (A)	3	1	3	2	1	10	0.71%
	NON-INCAPACITATING (B)	1	2	3	1	0	7	0.50%
	POSSIBLE INJURY (C)	4	4	4	4	2	18	1.28%
	PROPERTY DAMAGE ONLY (PDO)	0	0	0	0	0	0	0.00%
	COUNTY SUBTOTAL		8	9	10	8	3	38
LINCOLN Percent Personal Injury 85.71%	FATAL (K)	0	0	0	0	0	0	0.00%
	INCAPACITATING (A)	1	1	1	0	2	5	0.36%
	NON-INCAPACITATING (B)	0	1	1	0	1	3	0.21%
	POSSIBLE INJURY (C)	0	2	1	1	0	4	0.29%
	PROPERTY DAMAGE ONLY (PDO)	2	0	0	0	0	2	0.14%
	COUNTY SUBTOTAL		3	4	3	1	3	14

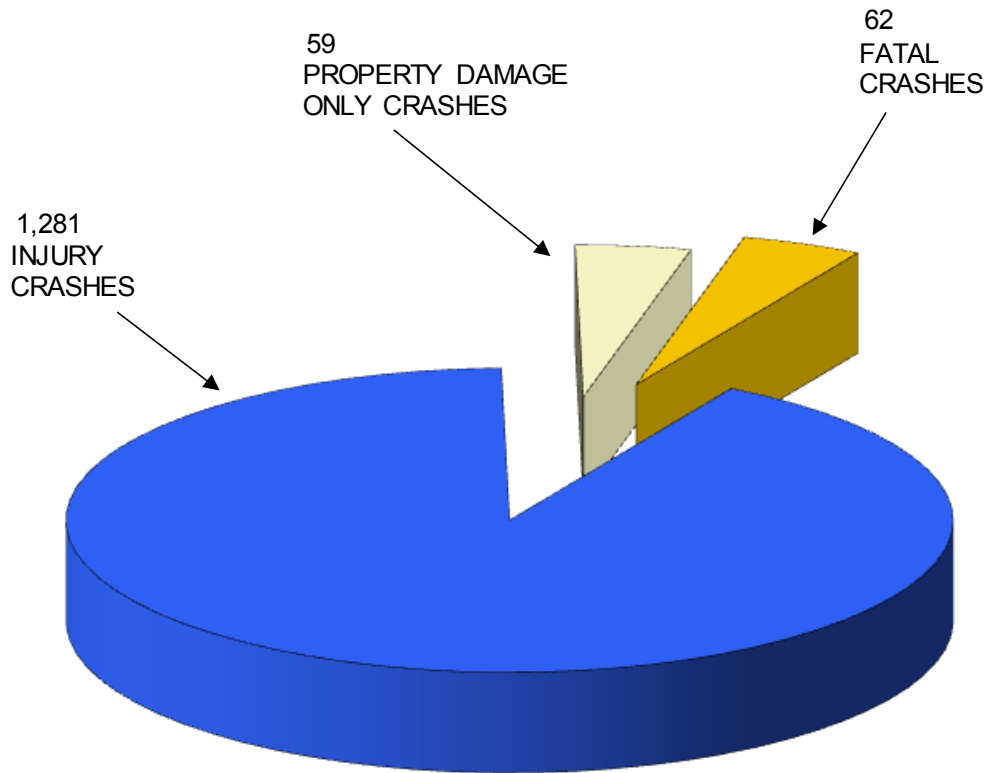


COUNTY	INJURY TYPE	2012	2013	2014	2015	2016	TOTAL CRASHES	PERCENT OF TOTAL
OXFORD Percent Personal Injury 97.14%	FATAL (K)	0	0	1	0	1	2	0.14%
	INCAPACITATING (A)	3	0	2	2	1	8	0.57%
	NON-INCAPACITATING (B)	2	3	1	3	0	9	0.64%
	POSSIBLE INJURY (C)	1	3	5	2	4	15	1.07%
	PROPERTY DAMAGE ONLY (PDO)	1	0	0	0	0	1	0.07%
	COUNTY SUBTOTAL		7	6	9	7	6	35
PENOBSCOT Percent Personal Injury 98.96%	FATAL (K)	3	3	3	3	1	13	0.93%
	INCAPACITATING (A)	12	7	8	6	7	40	2.85%
	NON-INCAPACITATING (B)	14	12	4	6	10	46	3.28%
	POSSIBLE INJURY (C)	16	15	16	15	29	91	6.49%
	PROPERTY DAMAGE ONLY (PDO)	0	0	0	1	1	2	0.14%
	COUNTY SUBTOTAL		45	37	31	31	48	192
PISCATAQUIS Percent Personal Injury 100.00%	FATAL (K)	0	0	0	0	0	0	0.00%
	INCAPACITATING (A)	0	0	0	0	0	0	0.00%
	NON-INCAPACITATING (B)	1	0	1	0	0	2	0.14%
	POSSIBLE INJURY (C)	0	0	0	0	0	0	0.00%
	PROPERTY DAMAGE ONLY (PDO)	0	0	0	0	0	0	0.00%
	COUNTY SUBTOTAL		1	0	1	0	0	2
SAGadahoc Percent Personal Injury 100.00%	FATAL (K)	0	0	0	0	1	1	0.07%
	INCAPACITATING (A)	0	1	2	1	0	4	0.29%
	NON-INCAPACITATING (B)	1	6	2	5	0	14	1.00%
	POSSIBLE INJURY (C)	1	1	0	1	2	5	0.36%
	PROPERTY DAMAGE ONLY (PDO)	0	0	0	0	0	0	0.00%
	COUNTY SUBTOTAL		2	8	4	7	3	24
SOMERSET Percent Personal Injury 90.00%	FATAL (K)	0	1	0	2	0	3	0.21%
	INCAPACITATING (A)	3	2	2	2	1	10	0.71%
	NON-INCAPACITATING (B)	3	2	3	0	2	10	0.71%
	POSSIBLE INJURY (C)	1	3	3	4	2	13	0.93%
	PROPERTY DAMAGE ONLY (PDO)	0	1	0	1	2	4	0.29%
	COUNTY SUBTOTAL		7	9	8	9	7	40
WALDO Percent Personal Injury 100.00%	FATAL (K)	0	0	0	0	0	0	0.00%
	INCAPACITATING (A)	2	0	0	0	1	3	0.21%
	NON-INCAPACITATING (B)	2	1	1	0	0	4	0.29%
	POSSIBLE INJURY (C)	1	3	2	3	1	10	0.71%
	PROPERTY DAMAGE ONLY (PDO)	0	0	0	0	0	0	0.00%
	COUNTY SUBTOTAL		5	4	3	3	2	17
WASHINGTON Percent Personal Injury 100.00%	FATAL (K)	0	1	0	1	1	3	0.21%
	INCAPACITATING (A)	2	1	0	0	1	4	0.29%
	NON-INCAPACITATING (B)	0	0	1	1	0	2	0.14%
	POSSIBLE INJURY (C)	0	0	0	0	0	0	0.00%
	PROPERTY DAMAGE ONLY (PDO)	0	0	0	0	0	0	0.00%
	COUNTY SUBTOTAL		2	2	1	2	2	9
YORK Percent Personal Injury 96.88%	FATAL (K)	3	1	1	2	2	9	0.64%
	INCAPACITATING (A)	4	4	11	6	3	28	2.00%
	NON-INCAPACITATING (B)	12	16	16	13	13	70	4.99%
	POSSIBLE INJURY (C)	17	8	17	19	18	79	5.63%
	PROPERTY DAMAGE ONLY (PDO)	0	2	0	3	1	6	0.43%
	COUNTY SUBTOTAL		36	31	45	43	37	192
COUNTY GRAND TOTAL Percent Personal Injury 95.79%	FATAL (K)	10	10	8	18	16	62	4.42%
	INCAPACITATING (A)	69	36	59	44	47	255	18.19%
	NON-INCAPACITATING (B)	96	89	84	76	61	406	28.96%
	POSSIBLE INJURY (C)	113	111	129	135	132	620	44.22%
	PROPERTY DAMAGE ONLY (PDO)	13	10	7	19	10	59	4.21%
	GRAND TOTAL		301	256	287	292	266	1,402

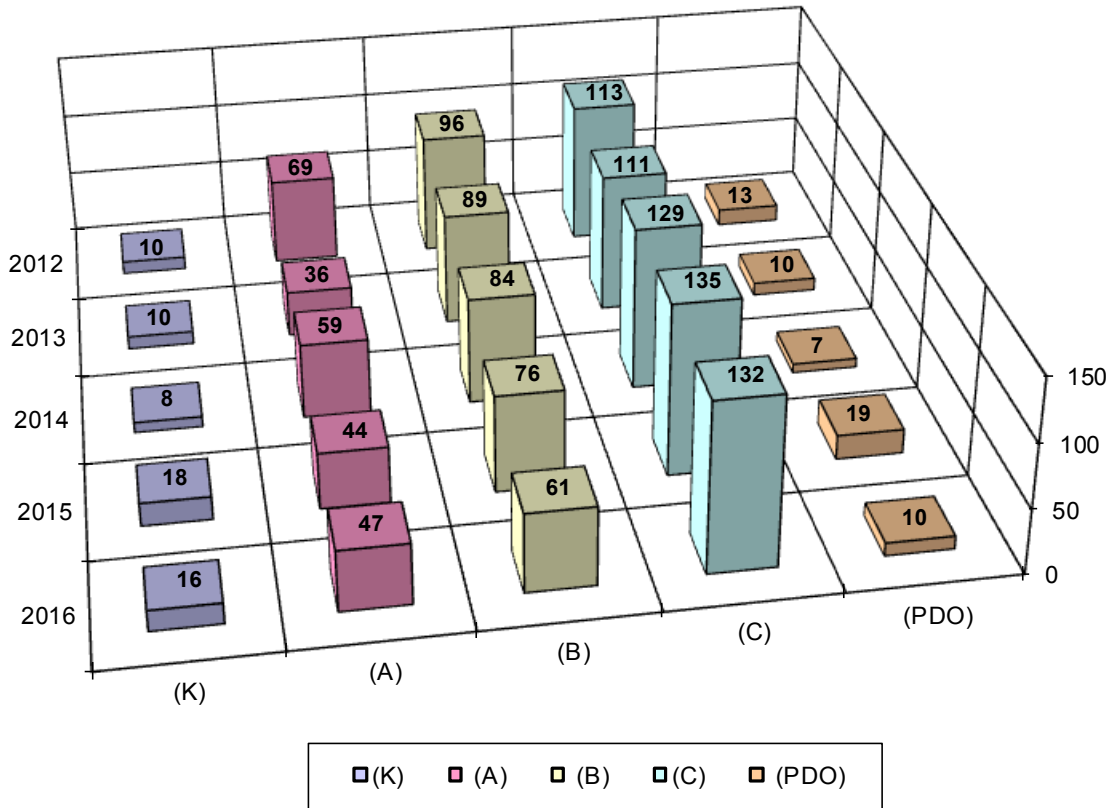


MAINE HIGHWAY PEDESTRIAN CRASHES 2012 - 2016

1,402 Total Pedestrian Crashes



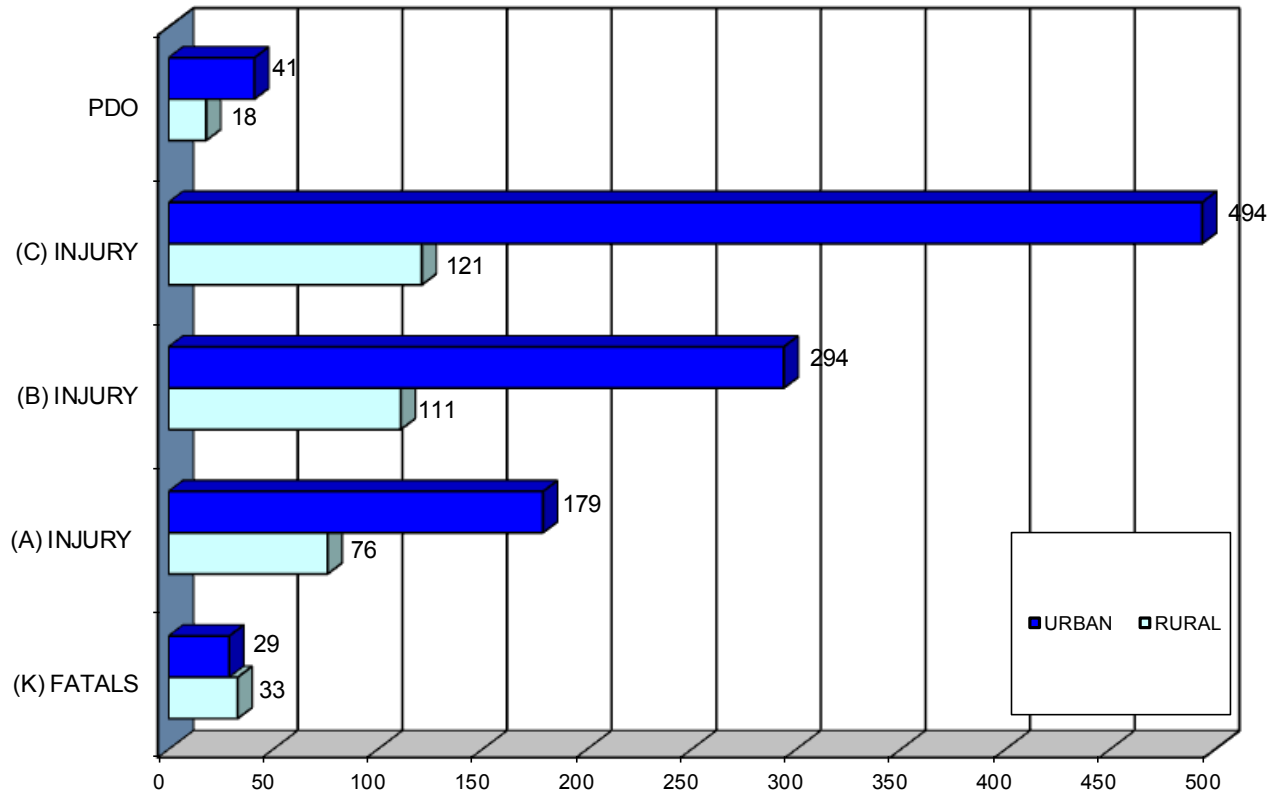
MAINE HIGHWAY PEDESTRIAN CRASH SEVERITY BY YEAR 2012 - 2016



YEAR	FATAL CRASH (K)	INCAPACITATING INJURY (A)	NON INCAPACITATING INJURY (B)	POSSIBLE INJURY (C)	PROPERTY DAMAGE ONLY (PDO)	TOTAL CRASHES	
2012	10	69	96	113	13	301	
2013	10	36	89	111	10	256	
2014	8	59	84	129	7	287	
2015	18	44	76	135	19	292	
2016	16	47	61	132	10	266	
TOTAL	62	255	406	620	59	1,402	
PERCENT	4.42%	PERCENT INJURY CRASHES =			91.37%	4.21%	100.00%



MAINE HIGHWAY PEDESTRIAN CRASH SEVERITY BY RURAL URBAN DESIGNATION 2012 - 2016



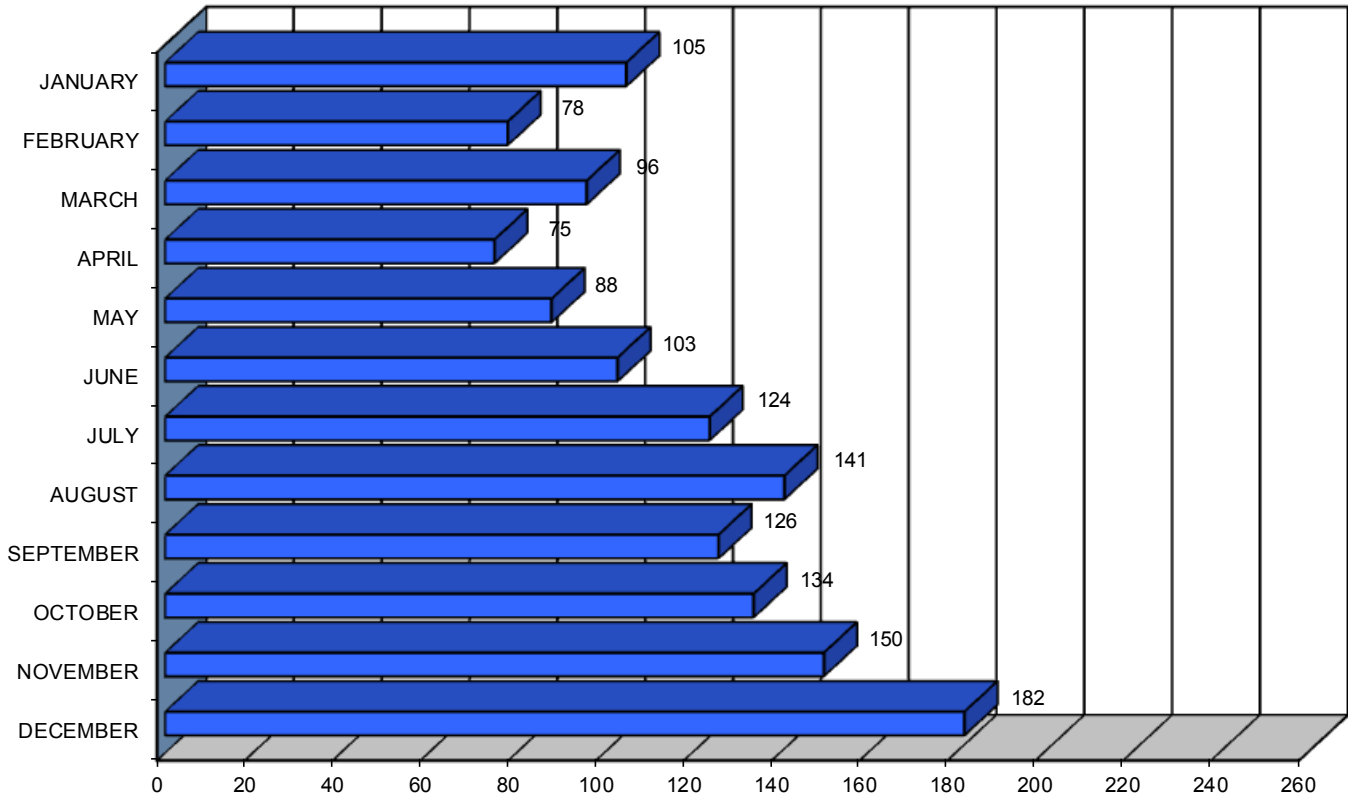
RURAL URBAN DESIGNATION	FATAL CRASHES (K)	INCAPACITATING INJURY (A)	NON INCAPACITATING INJURY (B)	POSSIBLE INJURY (C)	PROPERTY DAMAGE ONLY (PDO)	FIVE YEAR TOTAL
RURAL (1)	33	76	111	121	18	359
URBAN (2)	29	179	294	494	41	1037
UNKNOWN	0	0	1	5	0	6
TOTAL	62	255	406	620	59	1,402



MAINE HIGHWAY PEDESTRIAN CRASHES

BY MONTH

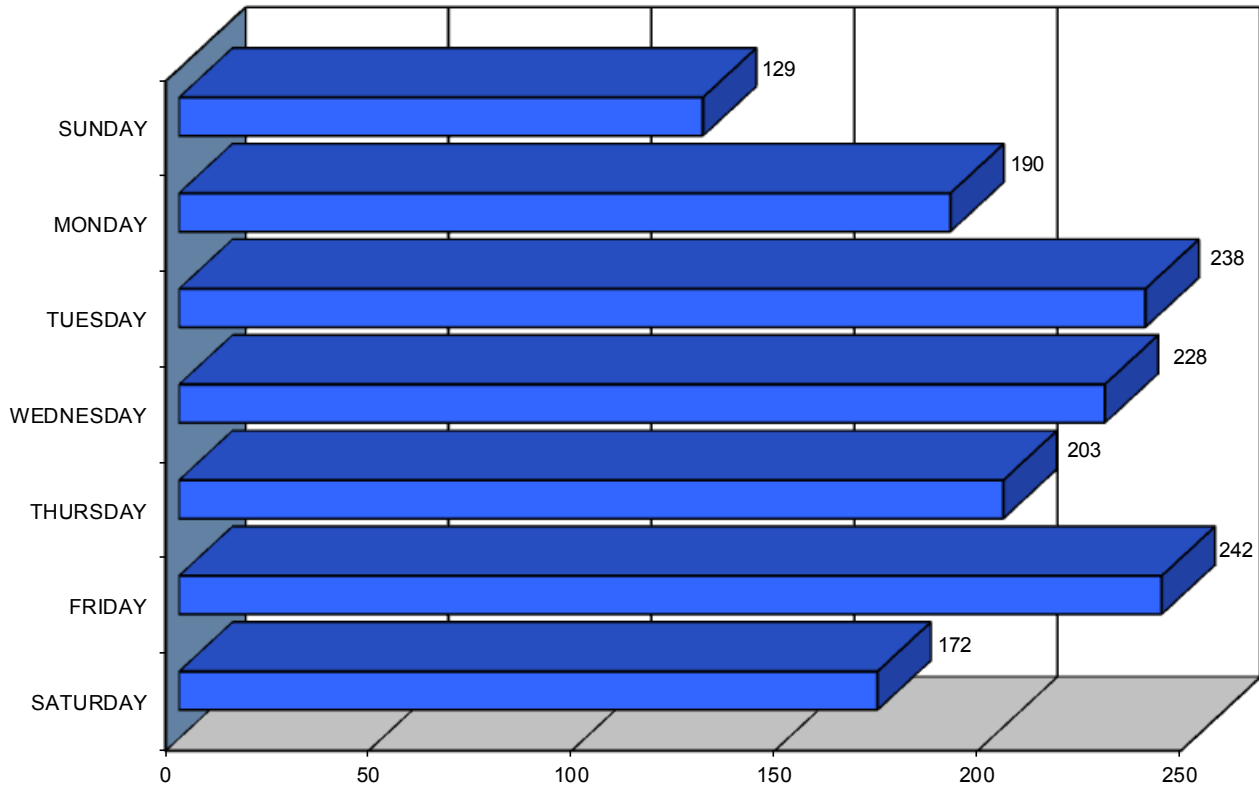
2012 - 2016



MONTH	2012	2013	2014	2015	2016	FIVE YEAR TOTAL	PERCENT OF TOTAL
JANUARY	28	16	19	21	21	105	7.49%
FEBRUARY	17	13	17	16	15	78	5.56%
MARCH	19	17	25	21	14	96	6.85%
APRIL	22	7	8	22	16	75	5.35%
MAY	19	19	17	16	17	88	6.28%
JUNE	23	20	19	16	25	103	7.35%
JULY	19	21	29	30	25	124	8.84%
AUGUST	29	32	30	20	30	141	10.06%
SEPTEMBER	35	23	21	25	22	126	8.99%
OCTOBER	30	27	28	26	23	134	9.56%
NOVEMBER	23	28	30	35	34	150	10.70%
DECEMBER	37	33	44	44	24	182	12.98%
TOTAL	301	256	287	292	266	1,402	100.00%



MAINE HIGHWAY PEDESTRIAN CRASHES BY DAY OF THE WEEK 2012 - 2016

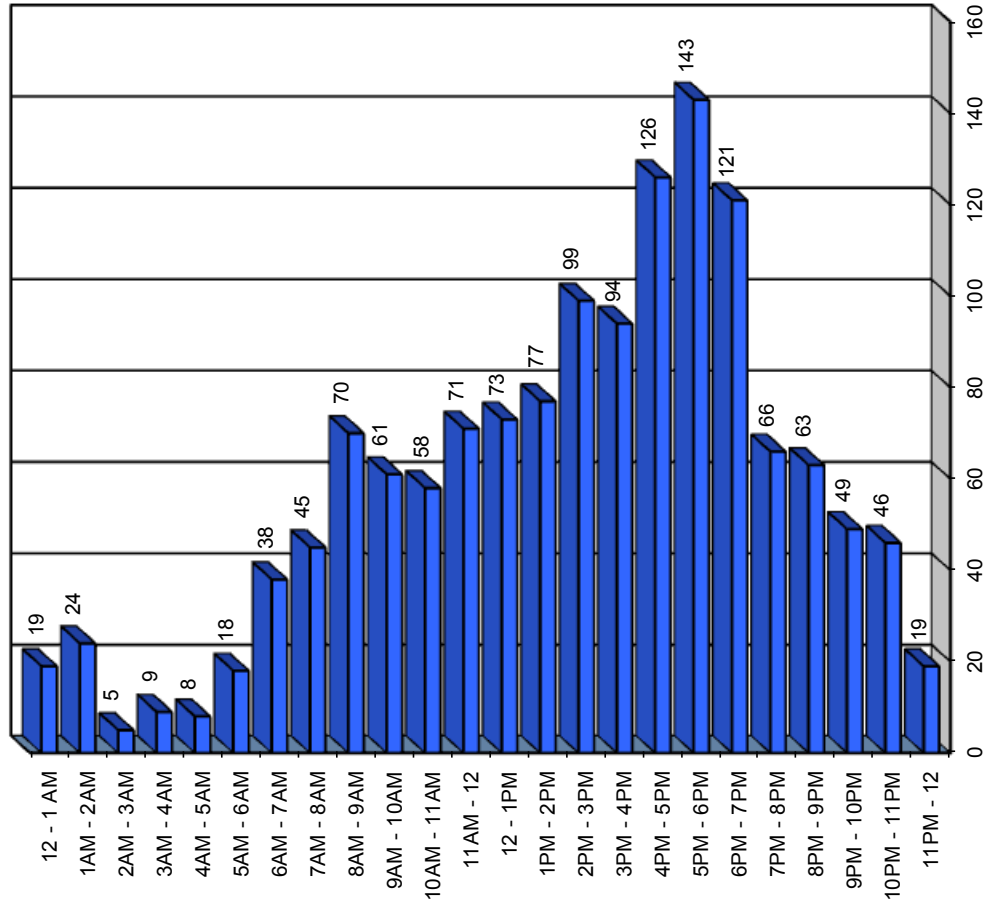


DAY OF THE WEEK	2012	2013	2014	2015	2016	FIVE YEAR TOTAL	PERCENT OF TOTAL
SUNDAY	29	22	29	26	23	129	9.20%
MONDAY	46	36	33	43	32	190	13.55%
TUESDAY	55	45	44	47	47	238	16.98%
WEDNESDAY	32	49	44	45	58	228	16.26%
THURSDAY	41	34	43	49	36	203	14.48%
FRIDAY	59	44	46	51	42	242	17.26%
SATURDAY	39	26	48	31	28	172	12.27%
TOTAL	301	256	287	292	266	1,402	100.00%



MAINE HIGHWAY PEDESTRIAN CRASHES

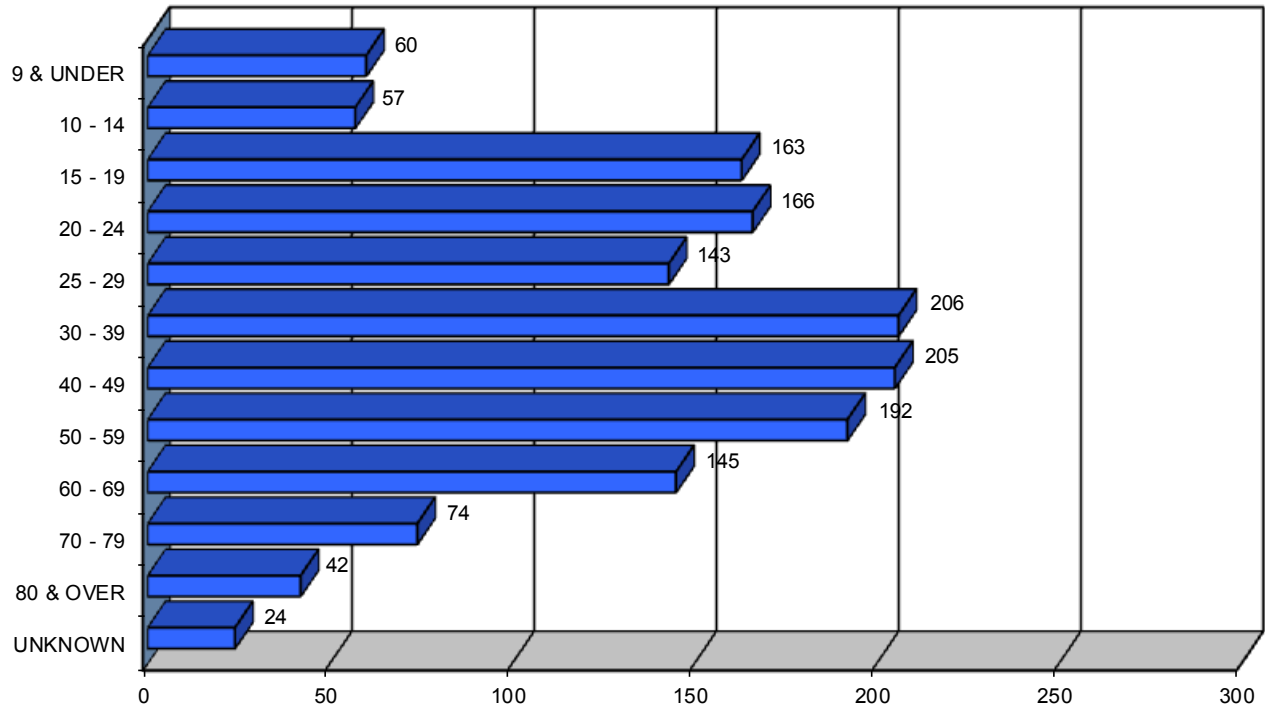
BY TIME OF DAY 2012 - 2016



TIME OF DAY	2012	2013	2014	2015	2016	FIVE YEAR TOTAL
12 - 1 AM	2	3	4	5	5	19
1AM - 2AM	6	4	6	3	5	24
2AM - 3AM	2	0	1	0	2	5
3AM - 4AM	2	1	2	1	3	9
4AM - 5AM	2	2	2	1	1	8
5AM - 6AM	2	7	3	5	1	18
6AM - 7AM	4	9	10	5	10	38
7AM - 8AM	11	8	11	12	3	45
8AM - 9AM	19	13	11	11	16	70
9AM - 10AM	12	15	12	12	10	61
10AM - 11AM	11	13	9	11	14	58
11AM - 12	14	14	15	16	12	71
12 - 1PM	14	15	14	13	17	73
1PM - 2PM	14	19	11	15	18	77
2PM - 3PM	25	13	21	25	15	99
3PM - 4PM	20	25	17	17	15	94
4PM - 5PM	23	23	26	27	27	126
5PM - 6PM	30	20	36	32	25	143
6PM - 7PM	36	14	24	30	17	121
7PM - 8PM	19	11	16	13	7	66
8PM - 9PM	18	10	11	13	11	63
9PM - 10PM	6	8	12	12	11	49
10PM - 11PM	9	9	8	6	14	46
11PM - 12	0	0	5	7	7	19
TOTAL	301	256	287	292	266	1,402



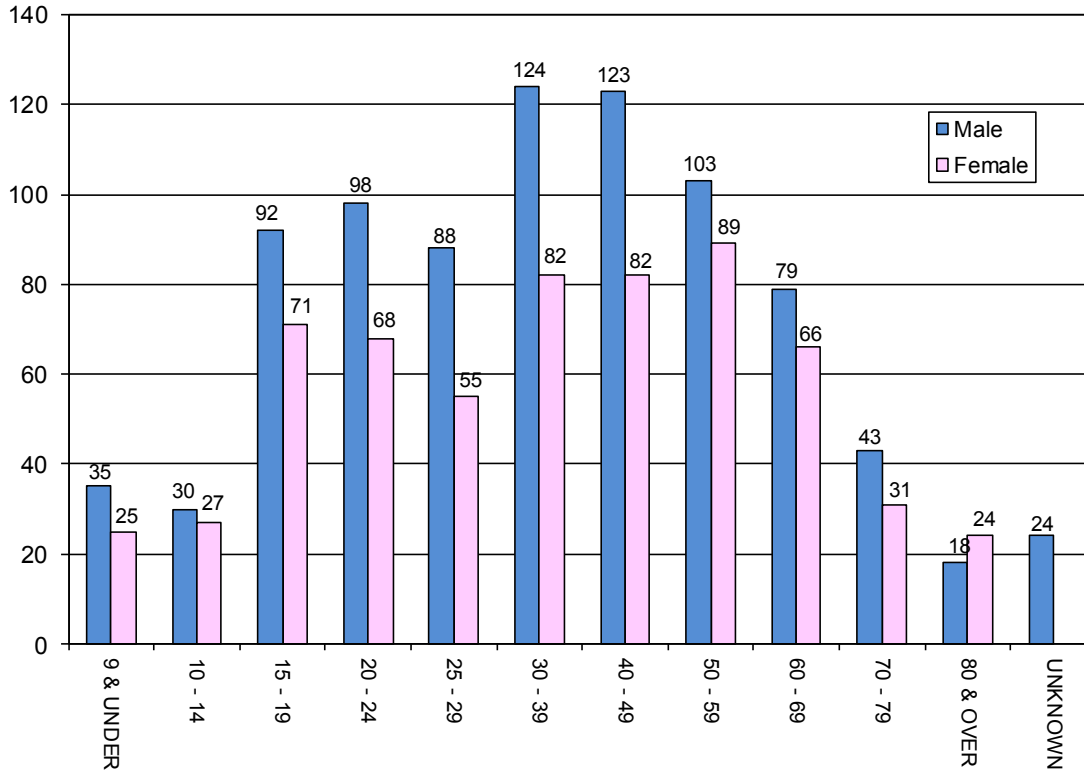
PEDESTRIANS INVOLVED IN MAINE HIGHWAY CRASHES BY AGE GROUP 2012 - 2016



AGE GROUP OF PEDESTRIAN	2012	2013	2014	2015	2016	FIVE YEAR TOTAL	PERCENT OF TOTAL
9 & UNDER	13	14	13	11	9	60	4.06%
10 - 14	12	12	14	9	10	57	3.86%
15 - 19	39	28	36	34	26	163	11.04%
20 - 24	30	41	34	27	34	166	11.24%
25 - 29	25	26	30	31	31	143	9.68%
30 - 39	44	41	41	44	36	206	13.95%
40 - 49	46	32	34	40	53	205	13.88%
50 - 59	37	30	38	48	39	192	13.00%
60 - 69	40	17	31	39	18	145	9.82%
70 - 79	15	19	17	9	14	74	5.01%
80 & OVER	9	9	8	6	10	42	2.84%
UNKNOWN	6	6	2	7	3	24	1.62%
TOTAL	316	275	298	305	283	1,477	100.00%



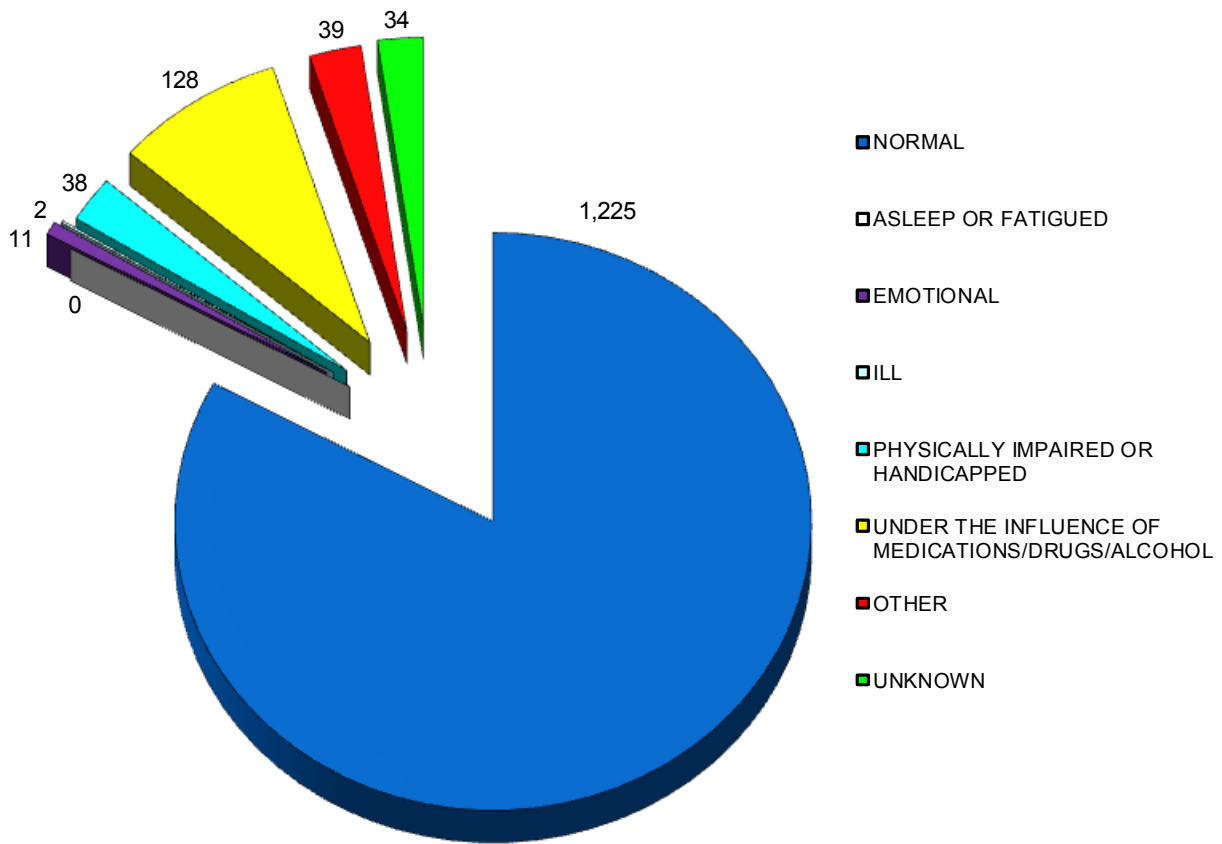
PEDESTRIANS INVOLVED IN MAINE HIGHWAY CRASHES BY AGE GROUP AND GENDER 2012 - 2016



AGE GROUP OF PEDESTRIAN BY GENDER	2012		2013		2014		2015		2016		TOTALS		FIVE YEAR TOTAL	PERCENT OF TOTAL
	M	F	M	F	M	F	M	F	M	F	M	F		
9 & UNDER	5	8	10	4	8	5	7	4	5	4	35	25	60	4.06%
10 - 14	5	7	5	7	8	6	6	3	6	4	30	27	57	3.86%
15 - 19	22	17	16	12	14	22	23	11	17	9	92	71	163	11.04%
20 - 24	20	10	25	16	20	14	15	12	18	16	98	68	166	11.24%
25 - 29	16	9	16	10	20	10	19	12	17	14	88	55	143	9.68%
30 - 39	23	21	27	14	22	19	29	15	23	13	124	82	206	13.95%
40 - 49	31	15	26	6	18	16	22	18	26	27	123	82	205	13.88%
50 - 59	17	20	17	13	22	16	32	16	15	24	103	89	192	13.00%
60 - 69	18	22	13	4	16	15	20	19	12	6	79	66	145	9.82%
70 - 79	13	2	8	11	11	6	6	3	5	9	43	31	74	5.01%
80 & OVER	3	6	3	6	4	4	4	2	4	6	18	24	42	2.84%
UNKNOWN	6		6		2		7		3		24		24	1.62%
TOTAL BY GENDER	173	137	166	103	163	133	183	115	148	132	833	620		
TOTAL	316		275		298		305		283		1,477		1,477	100.00%



MAINE HIGHWAY PEDESTRIAN CRASHES BY APPARENT PHYSICAL CONDITIONS 2012 - 2016



PEDESTRIAN PHYSICAL CONDITION	2012	2013	2014	2015	2016	FIVE YEAR TOTAL	PERCENT OF TOTAL
APPARENTLY NORMAL	265	226	256	257	221	1,225	82.94%
ASLEEP OR FATIGUED	0	0	0	0	0	0	0.00%
EMOTIONAL (depressed, angry, disturbed, etc.)	2	0	3	3	3	11	0.74%
ILL (sick)	0	0	0	1	1	2	0.14%
PHYSICALLY IMPAIRED OR HANDICAPPED	6	6	10	5	11	38	2.57%
UNDER THE INFLUENCE OF MEDICATIONS/DRUGS/ALCOHOL	22	29	24	22	31	128	8.67%
OTHER	12	7	3	10	7	39	2.64%
UNKNOWN	9	7	2	7	9	34	2.30%
TOTAL	316	275	298	305	283	1,477	100.00%



CONTRIBUTING FACTORS TO MAINE HIGHWAY PEDESTRIAN CRASHES 2012-2016

DRIVER ACTIONS (actions 1 & 2 combined)	2012	2013	2014	2015	2016	Totals
NO CONTRIBUTING ACTION	115	119	115	115	102	566
RAN OFF ROADWAY	2	3	2	8	3	18
FAILED TO YIELD RIGHT-OF-WAY	70	53	65	59	74	321
RAN RED LIGHT	1	0	1	0	1	3
RAN STOP SIGN	3	2	1	2	2	10
DISREGARDED OTHER TRAFFIC SIGN	1	5	1	2	2	11
DISREGARDED OTHER ROAD MARKINGS	7	1	4	4	3	19
EXCEEDED POSTED SPEED LIMIT	1	1	0	0	1	3
DROVE TOO FAST FOR CONDITIONS	5	4	6	4	2	21
IMPROPER TURN	6	2	3	0	2	13
IMPROPER BACKING	7	8	7	10	6	38
IMPROPER PASSING	0	1	0	1	4	6
WRONG WAY	0	0	0	1		1
FOLLOWED TOO CLOSELY	0	0	0	0	1	1
FAILED TO KEEP IN PROPER LANE	7	5	3	3	3	21
OPERATED MOTOR VEHICLE IN ERRATIC, RECKLESS, CARELESS, NEGLIGENT OR AGGRESSIVE MANNER	16	15	13	18	13	75
SWERVED OR AVOIDED DUE TO WIND, SLIPPERY SURFACE, MOTOR VEHICLE, OBJECT, NON-MOTORIST IN ROADWAY	5	6	1	3	2	17
OVER-CORRECTING/OVER-STEERING	1	0	4	2		7
OTHER CONTRIBUTING ACTION	36	13	23	21	18	111
UNKNOWN	26	18	17	16	16	93
PEDESTRIAN ACTIONS	309	256	266	269	255	1355
CROSSING WITH SIGNAL	17	19	13	12	27	88
CROSSING AGAINST SIGNAL	17	21	16	13	25	92
CROSSING MARKED CROSSWALK (no signal)	68	41	69	53	57	288
CROSSING NO SIGNAL OR CROSSWALK	68	65	78	74	64	349
WALKING IN ROAD WITH TRAFFIC	26	22	21	20	13	102
WALKING IN ROAD AGAINST TRAFFIC	16	6	9	8	6	45
STANDING IN ROAD	16	14	10	21	12	73
EMERGING FROM BEHIND PARKED CAR	7	3	3	3	2	18
CHILD GETTING ON/OFF SCHOOL BUS	2	0	1	1	0	4
GETTING ON/OFF VEHICLE	4	3	0	5	4	16
PUSHING OR WORKING ON VEHICLE	0	1	1	0	1	3
WORKING IN ROAD	2	5	6	9	5	27
PLAYING IN ROAD	1	3	3	1	2	10
NOT IN ROAD	7	7	10	17	10	51
FOLLOWING TRAIL	0	2	0	0	0	2
WALKING ON SIDEWALK	14	15	11	7	9	56
WALKING ADJACENT TO ROADWAY	12	8	15	17	8	60
WALKING TO/FROM SCHOOL	0	0	1	0	0	1
OTHER PEDESTRIAN ACTION	33	33	29	37	33	165
VEHICULAR FACTORS	310	268	296	298	278	1450
NONE	268	224	241	252	230	1215
BRAKES	2	0	1	1	1	5
EXHAUST SYSTEM	0	0	0	0	0	0
BODY, DOORS	0	0	1	1	1	3
STEERING	0	0	0	0	0	0
POWER TRAIN	0	1	1	0	1	3
SUSPENSION	0	0	0	0	0	0
TIRES	0	0	1	2	0	3
WHEELS	0	0	0	0	0	0
LIGHTS (head, signal, tail, brake)	0	1	2	0	0	3
WINDOWS/WINDSHIELD	1	2	1	1	1	6
MIRRORS	0	1	0	0	1	2
WIPERS	0	0	0	0	0	0
TRUCK COUPLING/TRAILER HITCH/SAFETY CHAINS	0	0	0	0	0	0
OTHER	9	6	4	6	3	28
	280	235	252	263	238	1268

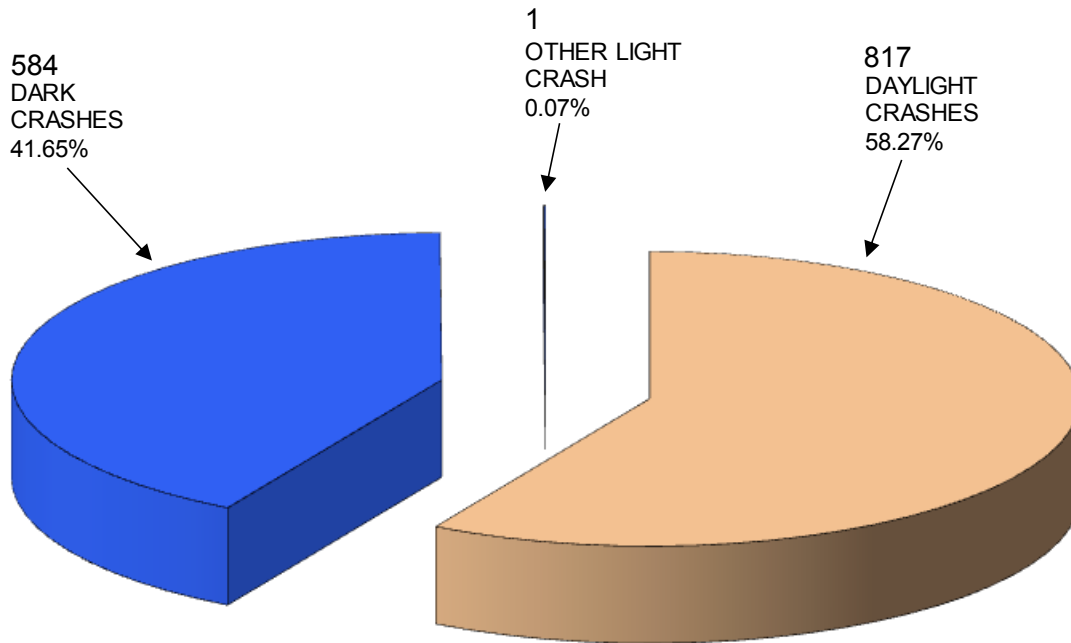


VEHICLES INVOLVED IN MAINE HIGHWAY PEDESTRIAN CRASHES 2012 - 2016

VEHICLE TYPE INVOLVED IN PEDESTRIAN CRASHES	2012	2013	2014	2015	2016	FIVE YEAR TOTAL
PASSENGER CAR	172	146	168	154	128	768
(SPORT) UTILITY VEHICLE	48	44	38	53	48	231
PASSENGER VAN	14	8	8	9	11	50
CARGO VAN (10k or less)	0	2	3	2	4	11
PICKUP TRUCK	47	36	39	51	48	221
MOTOR HOME	0	0	1	0	0	1
SCHOOL BUS	3	0	0	1	1	5
TRANSIT BUS	1	0	0	2	0	3
MOTOR COACH	0	0	1	0	0	1
OTHER BUS	0	0	0	0	0	0
MOTORCYCLE	0	1	3	1	4	9
MOPED	0	0	0	0	1	1
LOW SPEED VEHICLE	1	0	0	0	0	1
AUTOCYCLE	0	0	0	0	0	0
EXPERIMENTAL	0	0	0	0	0	0
OTHER LIGHT TRUCK (10,000 lbs or less)	2	0	2	0	0	4
MEDIUM /HEAVY TRUCKS (more than 10,000 lbs)	4	7	3	8	6	28
ATV (2,3,4-WHEEL)	0	0	1	0	0	1
SNOWMOBILE	0	0	0	0	0	0
PEDESTRIAN	316	275	298	305	283	1,477
BICYCLE	0	0	0	1	0	1
OTHER	14	18	10	6	3	51
TOTAL VEHICLES INVOLVED	622	537	575	593	537	2,864



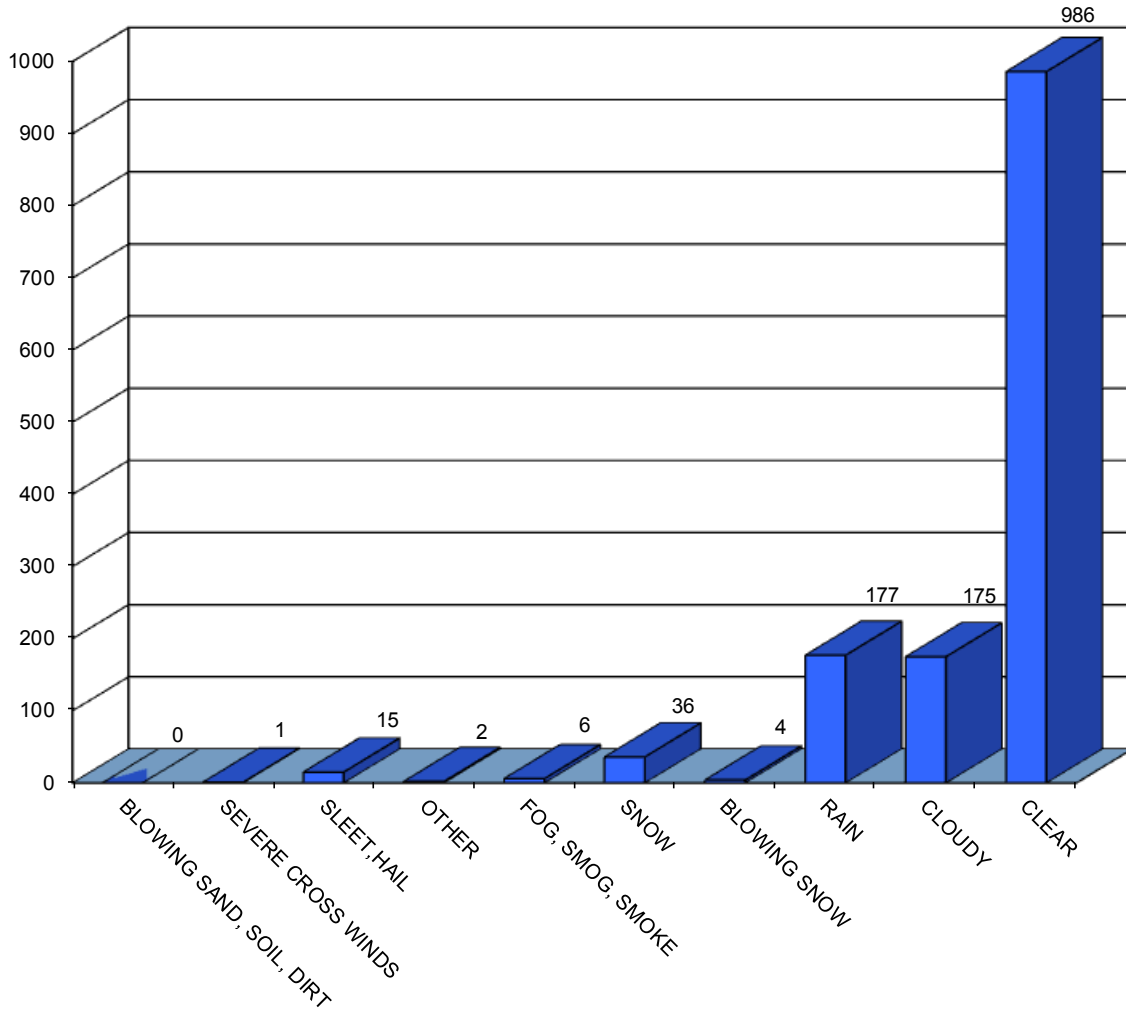
MAINE HIGHWAY PEDESTRIAN CRASHES BY LIGHT CONDITION 2012 - 2016



LIGHT CONDITION	2012	2013	2014	2015	2016	FIVE YEAR TOTAL	PERCENT OF TOTAL
DAYLIGHT	179	162	155	165	156	817	58.27%
DARK	122	94	131	127	110	584	41.65%
OTHER	0	0	1	0	0	1	0.07%
TOTAL	301	256	287	292	266	1,402	100.00%



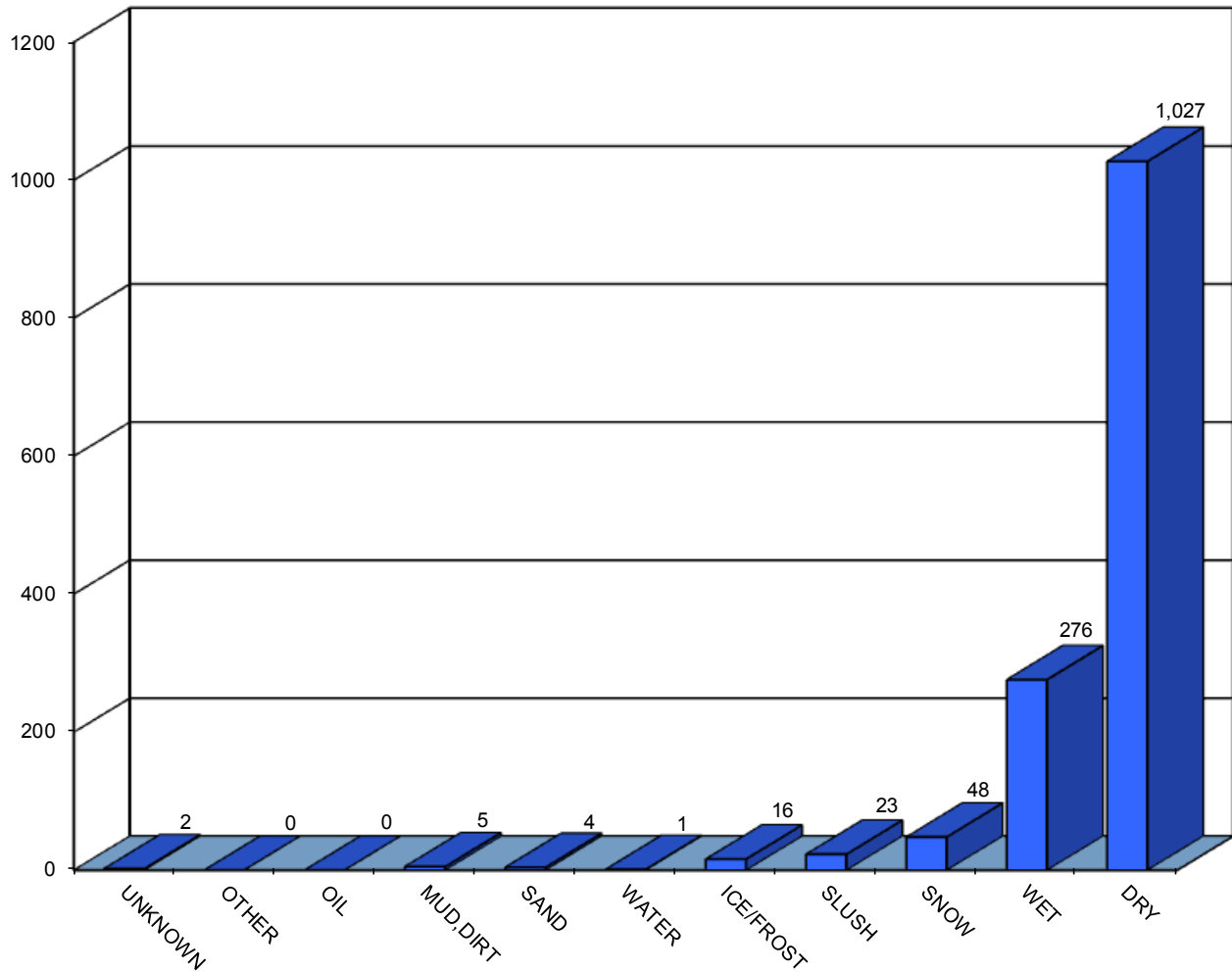
MAINE HIGHWAY PEDESTRIAN CRASHES BY WEATHER CONDITIONS 2012 - 2016



WEATHER CONDITIONS	2012	2013	2014	2015	2016	FIVE YEAR TOTAL
BLOWING SAND, SOIL, DIRT	0	0	0	0	0	0
SEVERE CROSS WINDS	0	1	0	0	0	1
SLEET, HAIL (freezing rain or drizzle)	3	5	4	1	2	15
OTHER	0	1	1	0	0	2
FOG, SMOG, SMOKE	1	0	0	4	1	6
SNOW	9	7	9	7	4	36
BLOWING SNOW	0	2	1	1	0	4
RAIN	38	30	42	29	38	177
CLOUDY	38	42	33	34	28	175
CLEAR	212	168	197	216	193	986
TOTAL	301	256	287	292	266	1,402



MAINE HIGHWAY PEDESTRIAN CRASHES BY ROAD SURFACE CONDITIONS 2012 - 2016



ROAD SURFACE CONDITIONS	2012	2013	2014	2015	2016	FIVE YEAR TOTAL
UNKNOWN	0	0	2	0	0	2
OTHER	0	0	0	0	0	0
OIL	0	0	0	0	0	0
MUD,DIRT	2	1	2	0	0	5
SAND	2	0	2	0	0	4
WATER (standing, moving)	0	0	0	0	1	1
ICE/FROST	4	2	4	4	2	16
SLUSH	5	8	4	4	2	23
SNOW	7	12	11	12	6	48
WET	60	48	61	53	54	276
DRY	221	185	201	219	201	1,027
TOTAL	301	256	287	292	266	1,402



STATE OF MAINE
HIGHWAY BICYCLE CRASHES
2012 - 2016

I. PREFACE 1

II. BICYCLE CRASH TABLES AND CHARTS 2012-2016

Crashes Summarized by:

County	1-4
Severity	5-6
Rural/Urban Designation	7
Month	8
Day of Week	9
Time of Day	10
Age Groups	11
Age Groups by Gender	12
Apparent Physical Condition	13
Contributing Factors	14
Vehicle Type	15
Light Conditions	16
Weather Conditions	17
Road Surface Conditions	18

STATEWIDE BICYCLE CRASHES

2012 - 2016

Preface

This publication is a statistical review of reported motor vehicle crashes that involved bicycles in Maine during the five-year study period 2012- 2016. The statistics are compiled from crash reports submitted to the Department of Transportation by the Traffic Division, Department of Public Safety. The Traffic Division receives all police uniform crash reports Form 13:20 A, from state, county and local police agencies.

The enclosed charts, graphs, listings and summaries were produced using the Department of Transportation's Computerized Crash Records System. Except for adjustments to locations and crash-type information for accuracy, no attempt has been made to modify the raw data received from the reporting agencies. However, because crash scenes are often dangerous and chaotic, some inaccuracies in data collection are possible.

A comparison of this report with other summaries of crashes and fatalities may also reveal inconsistencies due to changes in crash classification, late submittals, and differing reporting criteria.

The Department of Transportation and the Department of Public Safety wish to express our sincere thank you to all law enforcement agencies and officers for the work they do on crash investigations. Without their dedication, this report would not be possible.

We welcome your comments and suggestions on this report at:

Maine Department of Transportation
Bureau of Maintenance and Operations
Traffic Engineering Division
Crash Records Section
16 State House Station
Augusta, ME 04333-0016

Tel: 207-624-3618

Fax: 207-624-3101

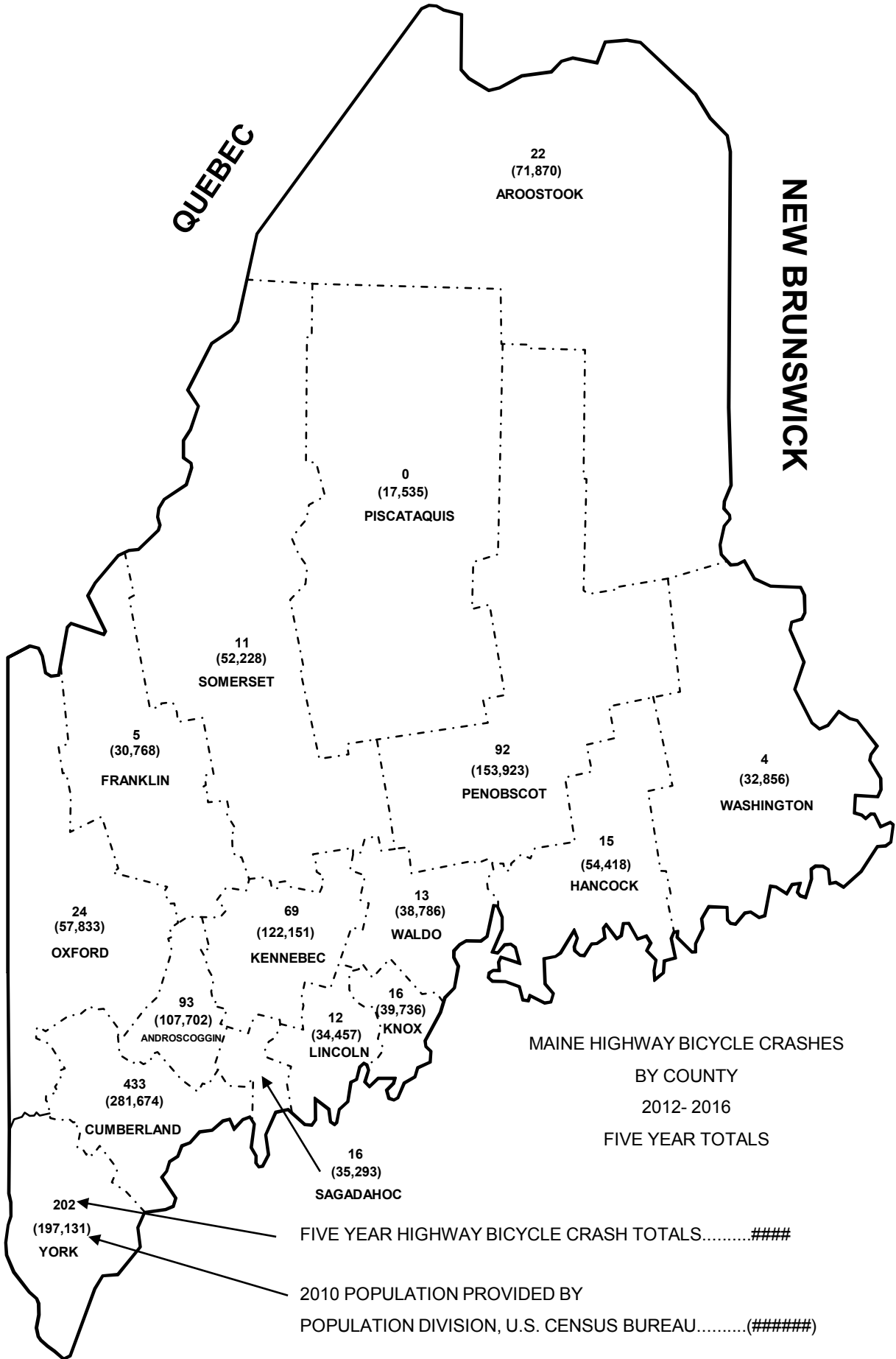




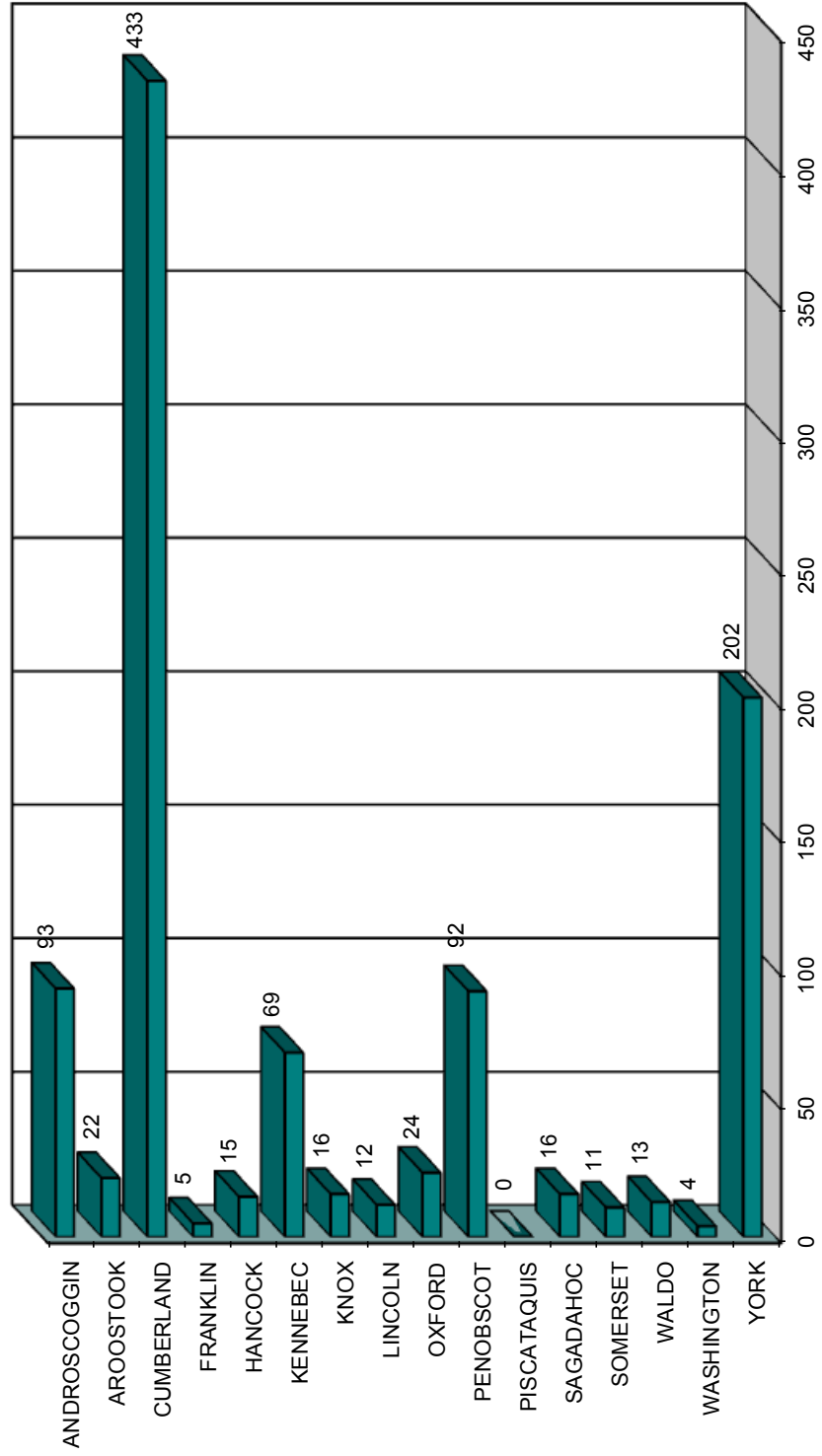
NEW HAMPSHIRE

QUEBEC

NEW BRUNSWICK



MAINE HIGHWAY BICYCLE CRASHES BY COUNTY 2012 - 2016



MAINE HIGHWAY BICYCLE CRASH SEVERITY BY COUNTY 2012- 2016

COUNTY	INJURY TYPE	2012	2013	2014	2015	2016	TOTAL CRASHES	PERCENT OF TOTAL
ANDROSCOGGIN Percent Personal Injury 89.25%	FATAL (K)	0	0	0	0	1	1	0.10%
	INCAPACITATING (A)	5	1	1	2	4	13	1.27%
	NON-INCAPACITATING (B)	3	7	8	5	8	31	3.02%
	POSSIBLE INJURY (C)	6	5	10	7	10	38	3.70%
	PROPERTY DAMAGE ONLY (PDO)	2	1	4	2	1	10	0.97%
	COUNTY SUBTOTAL		16	14	23	16	24	93
AROOSTOOK Percent Personal Injury 95.45%	FATAL (K)	0	0	0	0	0	0	0.00%
	INCAPACITATING (A)	1	1	0	1	0	3	0.29%
	NON-INCAPACITATING (B)	3	2	1	3	4	13	1.27%
	POSSIBLE INJURY (C)	0	1	2	1	1	5	0.49%
	PROPERTY DAMAGE ONLY (PDO)	0	0	0	1	0	1	0.10%
	COUNTY SUBTOTAL		4	4	3	6	5	22
CUMBERLAND Percent Personal Injury 93.07%	FATAL (K)	0	0	0	0	1	1	0.10%
	INCAPACITATING (A)	12	6	9	6	5	38	3.70%
	NON-INCAPACITATING (B)	33	38	27	27	30	155	15.09%
	POSSIBLE INJURY (C)	48	47	39	39	36	209	20.35%
	PROPERTY DAMAGE ONLY (PDO)	5	7	5	5	8	30	2.92%
	COUNTY SUBTOTAL		98	98	80	77	80	433
FRANKLIN Percent Personal Injury 80.00%	FATAL (K)	0	0	0	0	0	0	0.00%
	INCAPACITATING (A)	0	0	0	0	0	0	0.00%
	NON-INCAPACITATING (B)	0	0	1	0	1	2	0.19%
	POSSIBLE INJURY (C)	1	1	0	0	0	2	0.19%
	PROPERTY DAMAGE ONLY (PDO)	0	0	0	1	0	1	0.10%
	COUNTY SUBTOTAL		1	1	1	1	1	5
HANCOCK Percent Personal Injury 100.00%	FATAL (K)	0	0	0	0	0	0	0.00%
	INCAPACITATING (A)	1	0	0	1	1	3	0.29%
	NON-INCAPACITATING (B)	1	0	1	1	2	5	0.49%
	POSSIBLE INJURY (C)	0	0	1	3	3	7	0.68%
	PROPERTY DAMAGE ONLY (PDO)	0	0	0	0	0	0	0.00%
	COUNTY SUBTOTAL		2	0	2	5	6	15
KENNEBEC Percent Personal Injury 91.30%	FATAL (K)	0	1	0	0	1	2	0.19%
	INCAPACITATING (A)	2	1	3	0	3	9	0.88%
	NON-INCAPACITATING (B)	6	5	5	4	6	26	2.53%
	POSSIBLE INJURY (C)	5	1	7	6	7	26	2.53%
	PROPERTY DAMAGE ONLY (PDO)	1	2	0	1	2	6	0.58%
	COUNTY SUBTOTAL		14	10	15	11	19	69
KNOX Percent Personal Injury 100.00%	FATAL (K)	0	0	0	0	0	0	0.00%
	INCAPACITATING (A)	0	1	1	0	0	2	0.19%
	NON-INCAPACITATING (B)	0	1	1	3	0	5	0.49%
	POSSIBLE INJURY (C)	5	1	2	0	1	9	0.88%
	PROPERTY DAMAGE ONLY (PDO)	0	0	0	0	0	0	0.00%
	COUNTY SUBTOTAL		5	3	4	3	1	16
LINCOLN Percent Personal Injury 83.33%	FATAL (K)	0	0	2	0	0	2	0.19%
	INCAPACITATING (A)	0	0	0	0	0	0	0.00%
	NON-INCAPACITATING (B)	0	0	1	2	1	4	0.39%
	POSSIBLE INJURY (C)	0	0	3	0	1	4	0.39%
	PROPERTY DAMAGE ONLY (PDO)	0	1	1	0	0	2	0.19%
	COUNTY SUBTOTAL		0	1	7	2	2	12

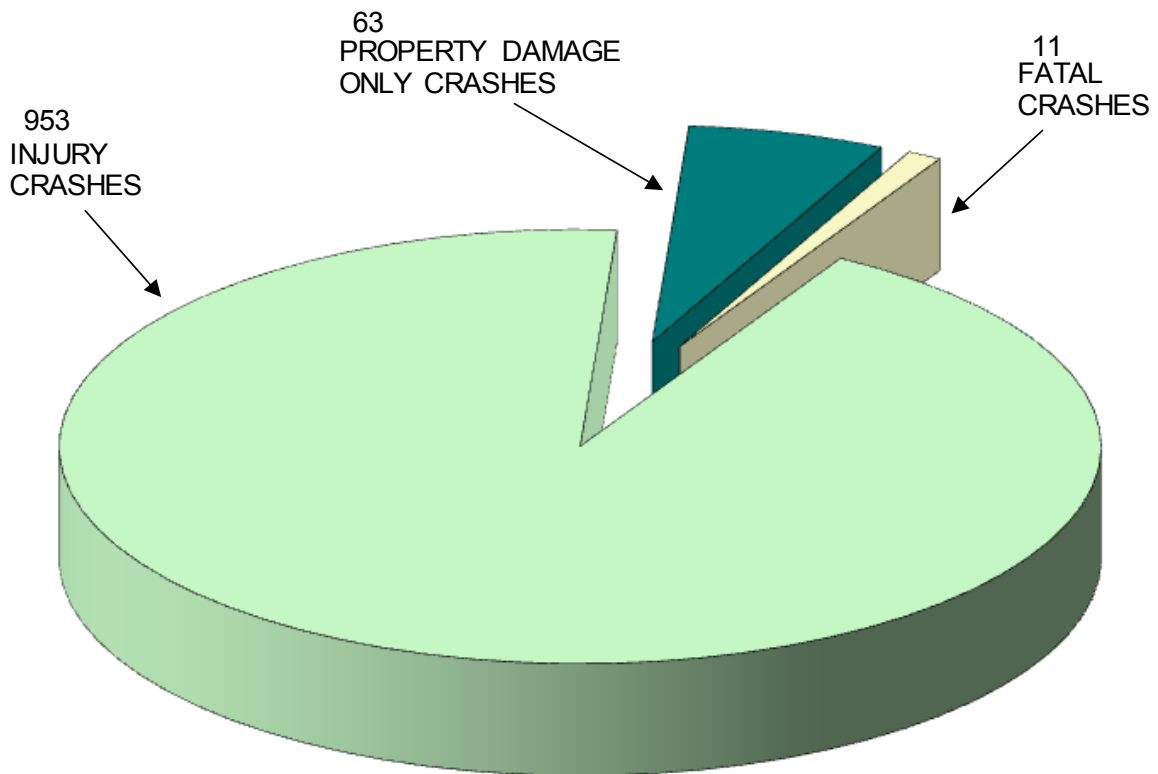


COUNTY	INJURY TYPE	2012	2013	2014	2015	2016	TOTAL CRASHES	PERCENT OF TOTAL
OXFORD Percent Personal Injury 100.00%	FATAL (K)	0	1	0	0	1	2	0.19%
	INCAPACITATING (A)	2	1	2	1	0	6	0.58%
	NON-INCAPACITATING (B)	3	0	1	1	2	7	0.68%
	POSSIBLE INJURY (C)	3	3	1	1	1	9	0.88%
	PROPERTY DAMAGE ONLY (PDO)	0	0	0	0	0	0	0.00%
	COUNTY SUBTOTAL		8	5	4	3	4	24
PENOBSCOT Percent Personal Injury 92.39%	FATAL (K)	0	1	0	0	0	1	0.10%
	INCAPACITATING (A)	5	6	2	1	1	15	1.46%
	NON-INCAPACITATING (B)	7	7	4	4	3	25	2.43%
	POSSIBLE INJURY (C)	4	8	10	12	10	44	4.28%
	PROPERTY DAMAGE ONLY (PDO)	0	0	1	3	3	7	0.68%
	COUNTY SUBTOTAL		16	22	17	20	17	92
PISCATAQUIS Percent Personal Injury 0.00%	FATAL (K)	0	0	0	0	0	0	0.00%
	INCAPACITATING (A)	0	0	0	0	0	0	0.00%
	NON-INCAPACITATING (B)	0	0	0	0	0	0	0.00%
	POSSIBLE INJURY (C)	0	0	0	0	0	0	0.00%
	PROPERTY DAMAGE ONLY (PDO)	0	0	0	0	0	0	0.00%
	COUNTY SUBTOTAL		0	0	0	0	0	0
SAGadahoc Percent Personal Injury 100.00%	FATAL (K)	0	0	0	0	0	0	0.00%
	INCAPACITATING (A)	0	1	0	0	0	1	0.10%
	NON-INCAPACITATING (B)	0	0	4	2	1	7	0.68%
	POSSIBLE INJURY (C)	3	2	0	2	1	8	0.78%
	PROPERTY DAMAGE ONLY (PDO)	0	0	0	0	0	0	0.00%
	COUNTY SUBTOTAL		3	3	4	4	2	16
SOMERSET Percent Personal Injury 100.00%	FATAL (K)	0	0	0	0	0	0	0.00%
	INCAPACITATING (A)	0	0	1	0	0	1	0.10%
	NON-INCAPACITATING (B)	0	2	1	0	0	3	0.29%
	POSSIBLE INJURY (C)	1	3	1	2	0	7	0.68%
	PROPERTY DAMAGE ONLY (PDO)	0	0	0	0	0	0	0.00%
	COUNTY SUBTOTAL		1	5	3	2	0	11
WALDO Percent Personal Injury 100.00%	FATAL (K)	0	0	0	0	0	0	0.00%
	INCAPACITATING (A)	1	2	2	1	0	6	0.58%
	NON-INCAPACITATING (B)	0	3	1	0	0	4	0.39%
	POSSIBLE INJURY (C)	0	1	2	0	0	3	0.29%
	PROPERTY DAMAGE ONLY (PDO)	0	0	0	0	0	0	0.00%
	COUNTY SUBTOTAL		1	6	5	1	0	13
WASHINGTON Percent Personal Injury 100.00%	FATAL (K)	0	0	0	0	0	0	0.00%
	INCAPACITATING (A)	0	0	0	0	0	0	0.00%
	NON-INCAPACITATING (B)	1	1	0	1	0	3	0.29%
	POSSIBLE INJURY (C)	1	0	0	0	0	1	0.10%
	PROPERTY DAMAGE ONLY (PDO)	0	0	0	0	0	0	0.00%
	COUNTY SUBTOTAL		2	1	0	1	0	4
YORK Percent Personal Injury 97.03%	FATAL (K)	1	1	0	0	0	2	0.19%
	INCAPACITATING (A)	4	1	8	6	9	28	2.73%
	NON-INCAPACITATING (B)	23	16	15	15	20	89	8.67%
	POSSIBLE INJURY (C)	13	16	15	14	19	77	7.50%
	PROPERTY DAMAGE ONLY (PDO)	1	2	1	2	0	6	0.58%
	COUNTY SUBTOTAL		42	36	39	37	48	202
COUNTY GRAND TOTAL Percent Personal Injury 93.87%	FATAL (K)	1	4	2	0	4	11	1.07%
	INCAPACITATING (A)	33	21	29	19	23	125	12.17%
	NON-INCAPACITATING (B)	80	82	71	68	78	379	36.90%
	POSSIBLE INJURY (C)	90	89	93	87	90	449	43.72%
	PROPERTY DAMAGE ONLY (PDO)	9	13	12	15	14	63	6.13%
	GRAND TOTAL		213	209	207	189	209	1,027

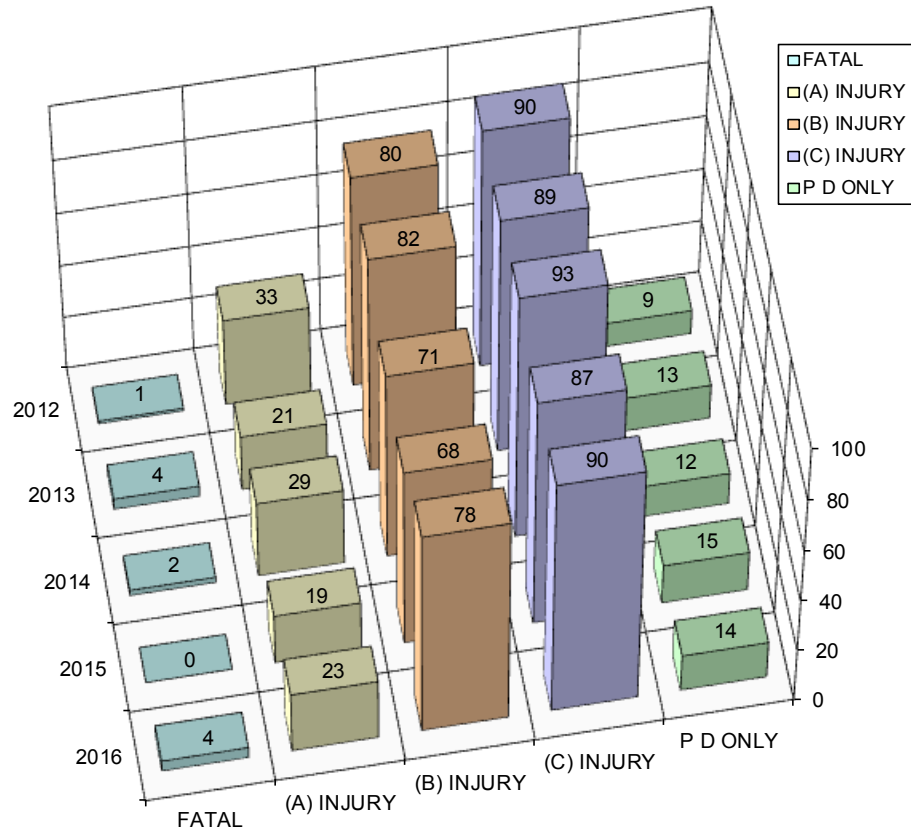


MAINE HIGHWAY BICYCLE CRASHES 2012 - 2016

1,027 Total Bicycle Crashes



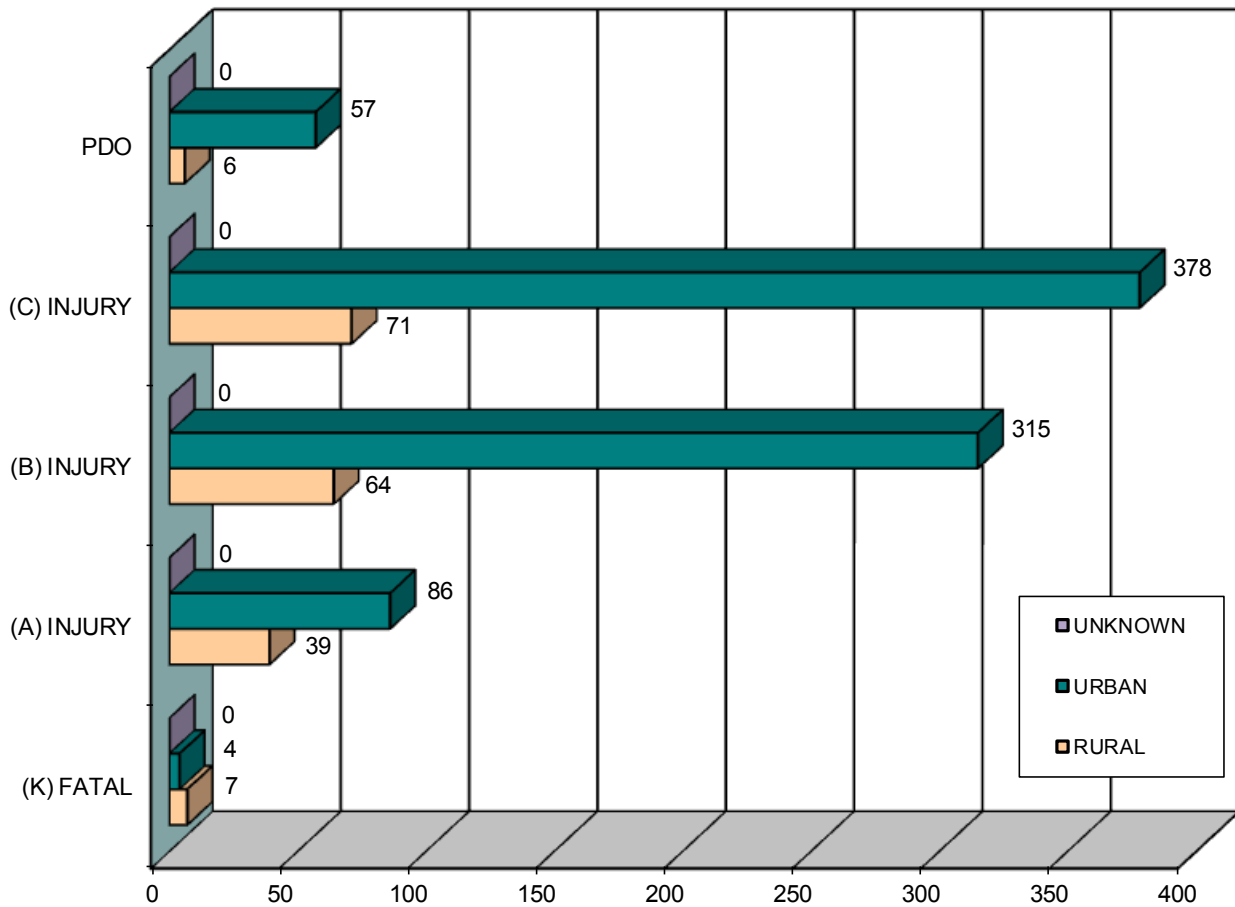
MAINE HIGHWAY BICYCLE CRASH SEVERITY BY YEAR 2012 - 2016



YEAR	FATAL CRASH (K)	INCAPACITATING INJURY (A)	NON INCAPACITATING INJURY (B)	POSSIBLE INJURY (C)	PROPERTY DAMAGE ONLY (PDO)	TOTAL CRASHES
2012	1	33	80	90	9	213
2013	4	21	82	89	13	209
2014	2	29	71	93	12	207
2015	0	19	68	87	15	189
2016	4	23	78	90	14	209
TOTAL	11	125	379	449	63	1,027
PERCENT	1.07%	PERCENT INJURY CRASHES =		92.79%	6.13%	100.00%



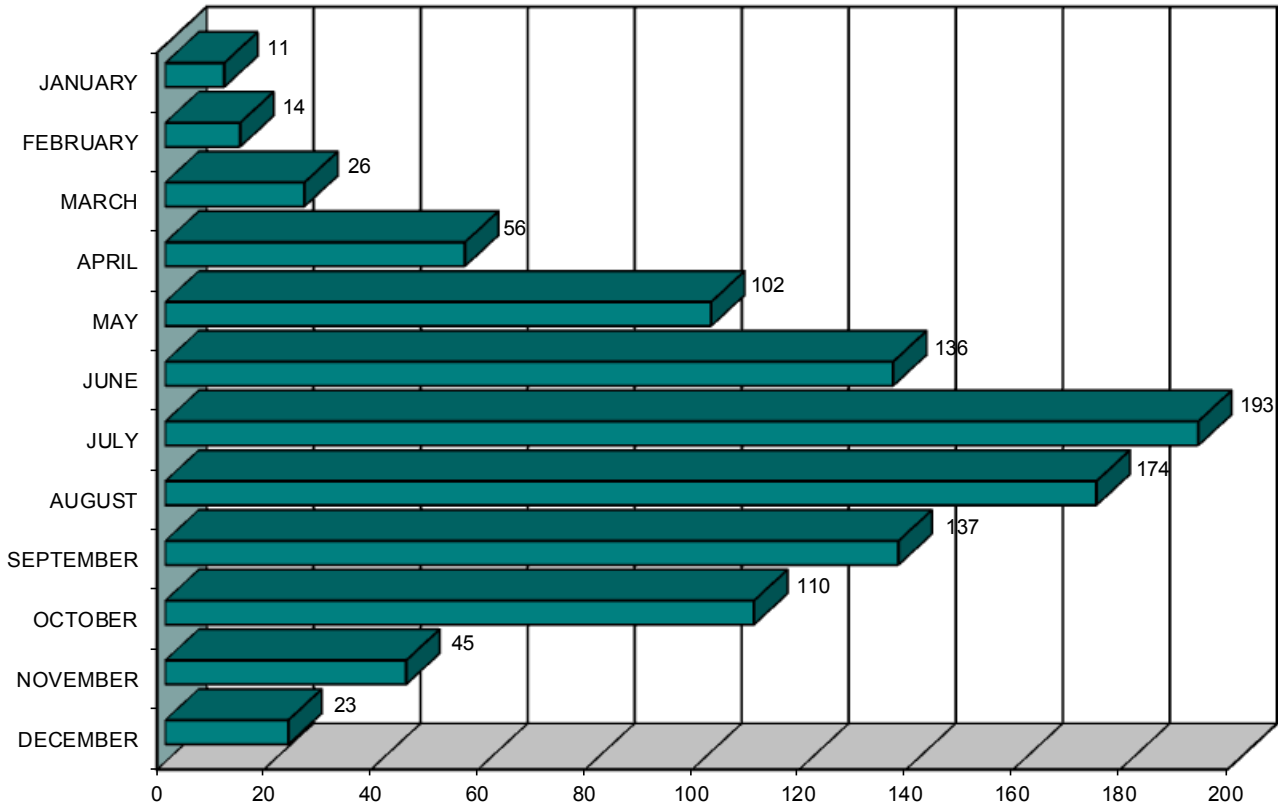
MAINE HIGHWAY BICYCLE CRASH SEVERITY BY RURAL URBAN DESIGNATION 2012 - 2016



RURAL URBAN DESIGNATION	FATAL CRASH (K)	INCAPACITATING INJURY (A)	NON INCAPACITATING INJURY (B)	POSSIBLE INJURY (C)	PROPERTY DAMAGE ONLY (PDO)	FIVE YEAR TOTAL
RURAL (1)	7	39	64	71	6	187
URBAN (2)	4	86	315	378	57	840
UNKNOWN	0	0	0	0	0	0
TOTAL	11	125	379	449	63	1,027



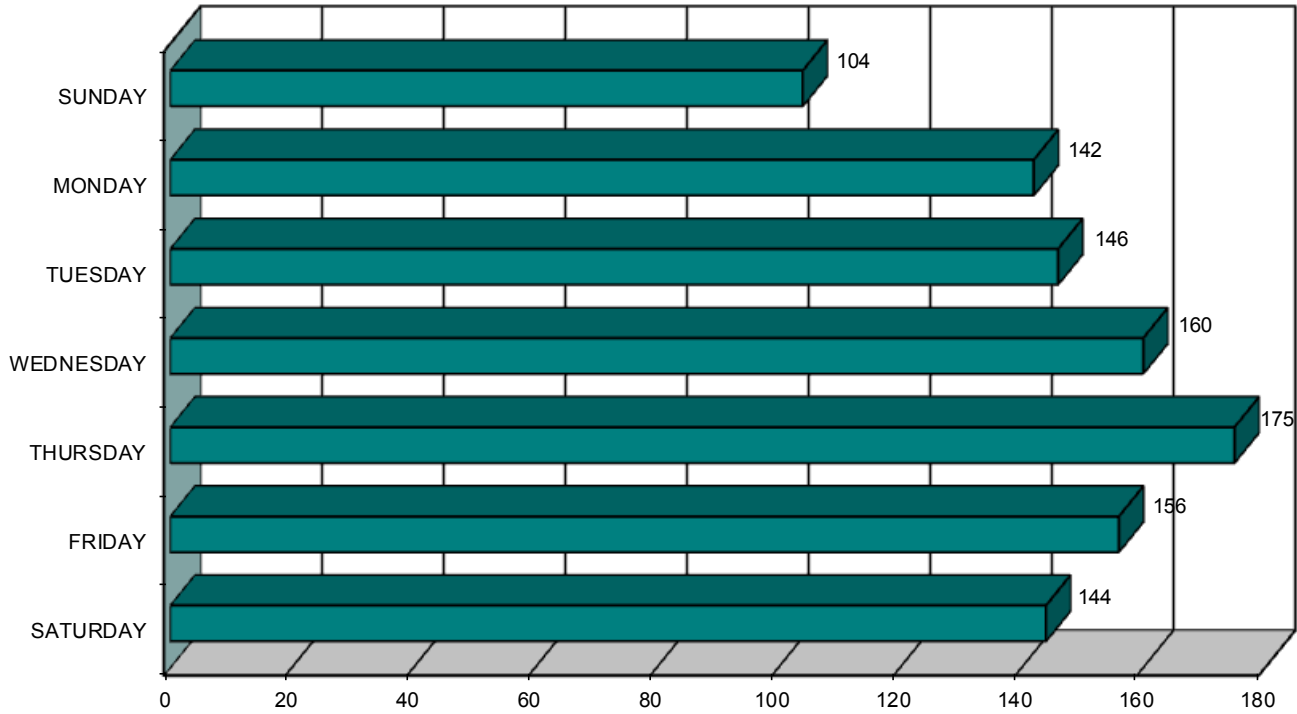
MAINE HIGHWAY BICYCLE CRASHES BY MONTH 2012- 2016



MONTH	2012	2013	2014	2015	2016	FIVE YEAR TOTAL	PERCENT OF TOTAL
JANUARY	3	3	1	3	1	11	1.07%
FEBRUARY	1	7	1	0	5	14	1.36%
MARCH	9	4	0	5	8	26	2.53%
APRIL	14	16	8	9	9	56	5.45%
MAY	21	21	17	20	23	102	9.93%
JUNE	26	23	29	30	28	136	13.24%
JULY	43	44	34	36	36	193	18.79%
AUGUST	33	31	47	31	32	174	16.94%
SEPTEMBER	22	27	33	22	33	137	13.34%
OCTOBER	23	23	27	19	18	110	10.71%
NOVEMBER	9	8	5	10	13	45	4.38%
DECEMBER	9	2	5	4	3	23	2.24%
TOTAL	213	209	207	189	209	1,027	100.00%



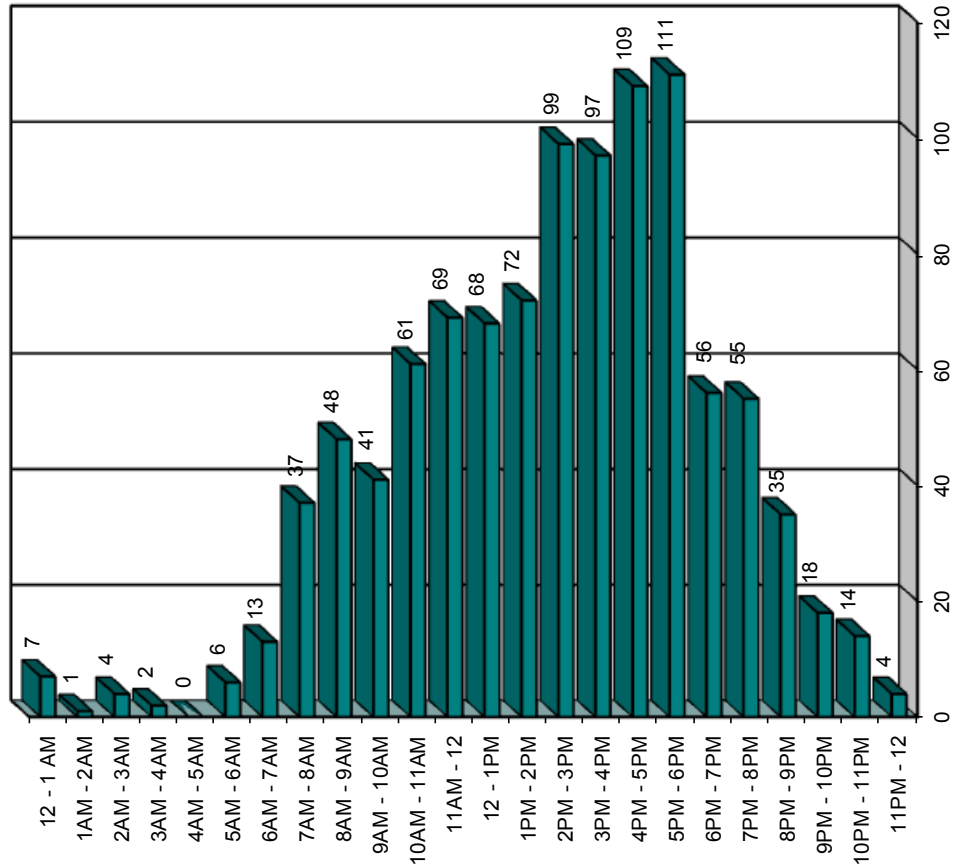
MAINE HIGHWAY BICYCLE CRASHES BY DAY OF THE WEEK 2012 - 2016



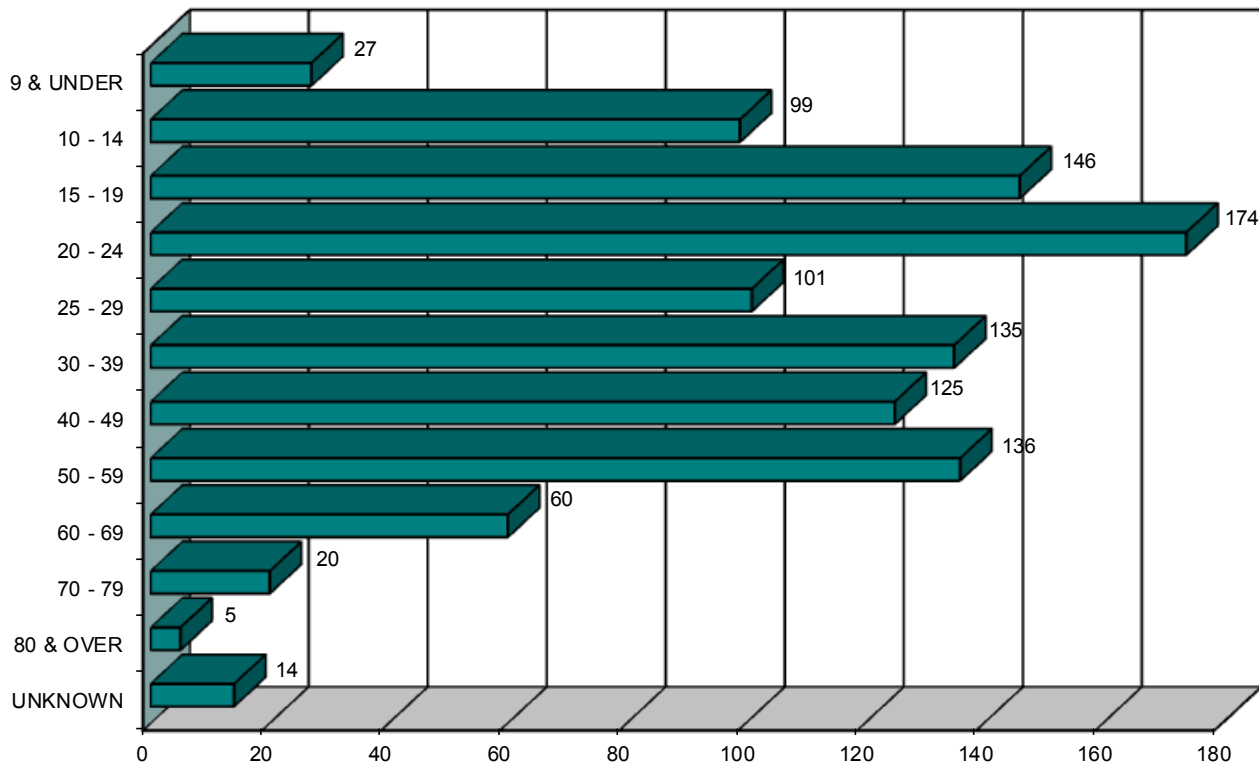
DAY OF THE WEEK	2012	2013	2014	2015	2016	FIVE YEAR TOTAL	PERCENT OF TOTAL
SUNDAY	25	23	19	14	23	104	10.13%
MONDAY	31	31	25	26	29	142	13.83%
TUESDAY	32	27	28	25	34	146	14.22%
WEDNESDAY	26	33	43	28	30	160	15.58%
THURSDAY	32	34	35	33	41	175	17.04%
FRIDAY	41	34	26	30	25	156	15.19%
SATURDAY	26	27	31	33	27	144	14.02%
TOTAL	213	209	207	189	209	1,027	100.00%



MAINE HIGHWAY BICYCLE CRASHES BY TIME OF DAY 2012 - 2016



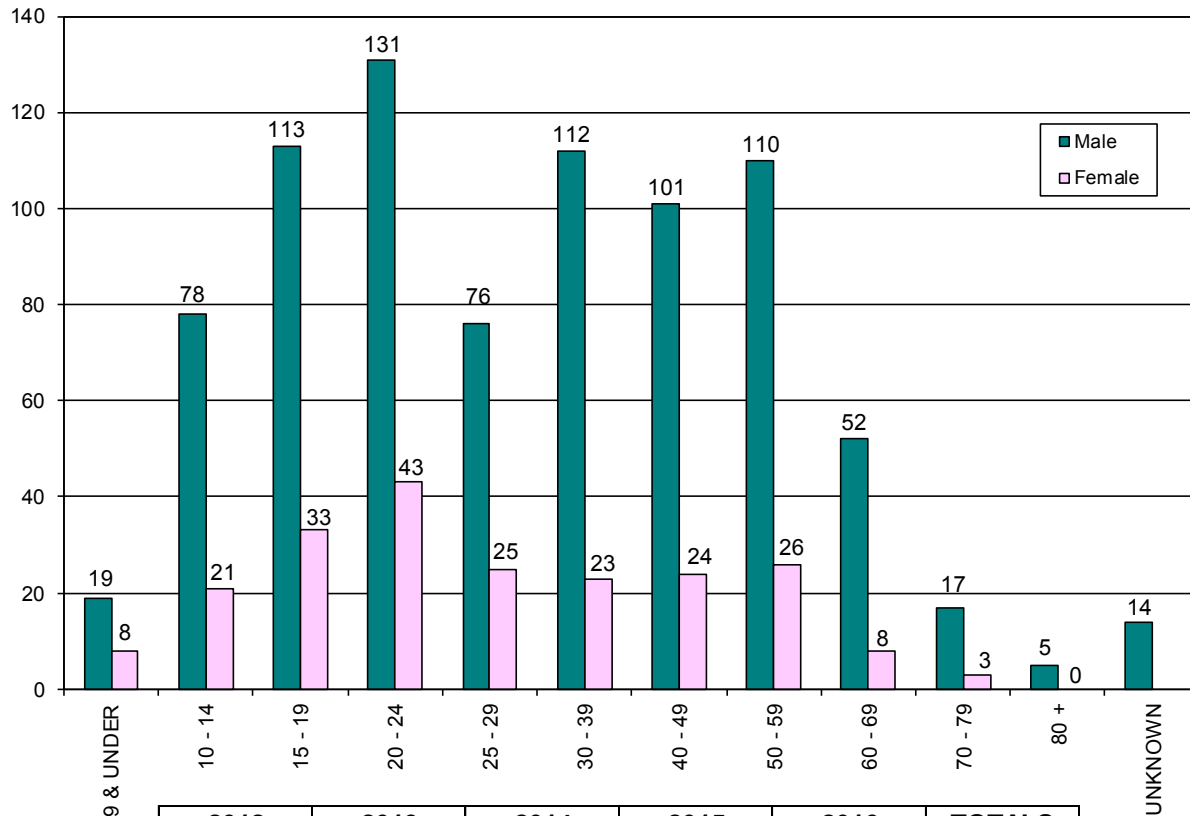
BICYCLISTS INVOLVED IN MAINE HIGHWAY CRASHES BY AGE GROUP 2012 - 2016



AGE OF BICYCLIST	2012	2013	2014	2015	2016	FIVE YEAR TOTAL	PERCENT OF TOTAL
9 & UNDER	2	2	6	10	7	27	2.59%
10 - 14	21	16	16	25	21	99	9.50%
15 - 19	32	28	28	26	32	146	14.01%
20 - 24	39	42	42	17	34	174	16.70%
25 - 29	20	21	22	19	19	101	9.69%
30 - 39	32	28	24	26	25	135	12.96%
40 - 49	32	27	29	19	18	125	12.00%
50 - 59	23	36	27	26	24	136	13.05%
60 - 69	12	8	9	12	19	60	5.76%
70 - 79	1	2	4	8	5	20	1.92%
80 & OVER	0	1	1	0	3	5	0.48%
UNKNOWN	2	2	2	3	5	14	1.34%
TOTAL	216	213	210	191	212	1,042	100.00%



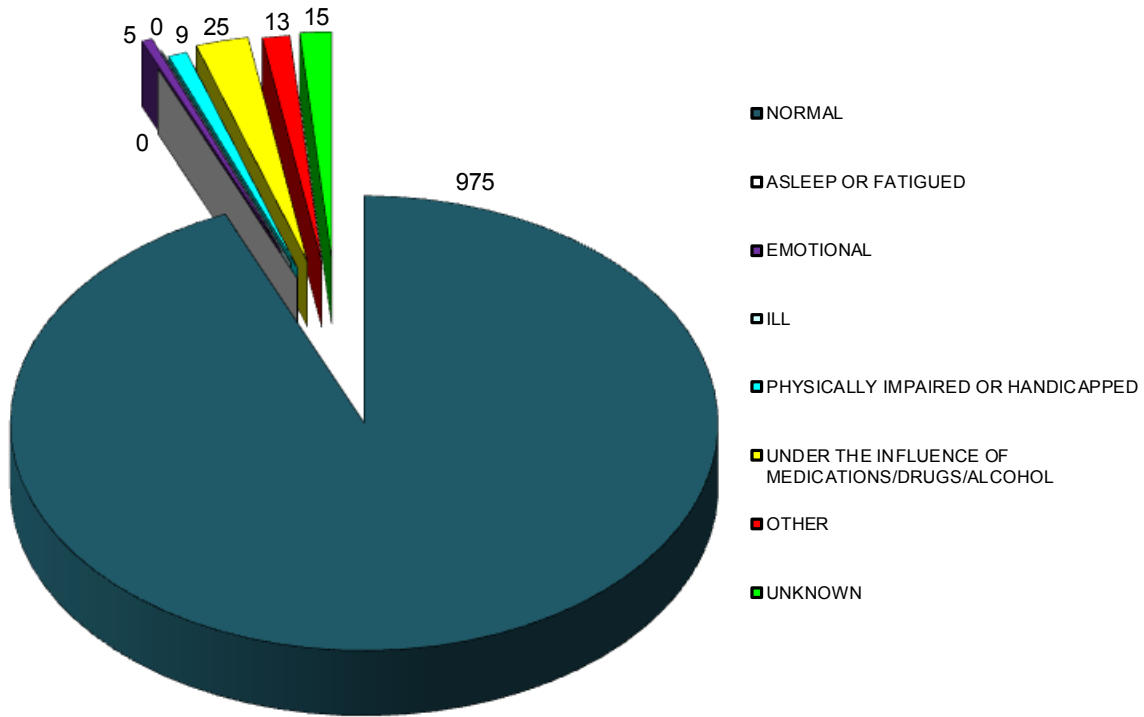
BICYCLISTS INVOLVED IN MAINE HIGHWAY CRASHES BY AGE GROUP AND GENDER 2012 - 2016



AGE GROUP OF BICYCLIST BY GENDER	2012		2013		2014		2015		2016		TOTALS		FIVE YEAR TOTAL	PERCENT OF TOTAL
	M	F	M	F	M	F	M	F	M	F	M	F		
9 & UNDER	1	1	1	1	5	1	6	4	6	1	19	8	27	2.59%
10 - 14	16	5	12	4	9	7	21	4	20	1	78	21	99	9.50%
15 - 19	21	11	24	4	23	5	18	8	27	5	113	33	146	14.01%
20 - 24	28	11	31	11	34	8	15	2	23	11	131	43	174	16.70%
25 - 29	16	4	13	8	20	2	15	4	12	7	76	25	101	9.69%
30 - 39	24	8	22	6	19	5	24	2	23	2	112	23	135	12.96%
40 - 49	28	4	19	8	25	4	15	4	14	4	101	24	125	12.00%
50 - 59	19	4	30	6	20	7	19	7	22	2	110	26	136	13.05%
60 - 69	9	3	6	2	9	0	11	1	17	2	52	8	60	5.76%
70 - 79	1	0	2	0	4	0	7	1	3	2	17	3	20	1.92%
80 & OVER	0	0	1	0	1	0	0	0	3	0	5	0	5	0.48%
UNKNOWN	2		2		2		3		5		14		14	1.34%
TOTAL BY GENDER	163	51	161	50	169	39	151	37	170	37	814	214		
TOTAL	216		213		210		191		212		1,042		1,042	100.00%



MAINE HIGHWAY BICYCLE CRASHES BY APPARENT PHYSICAL CONDITIONS 2012 - 2016



BICYCLIST PHYSICAL CONDITION	2012	2013	2014	2015	2016	FIVE YEAR TOTAL	PERCENT OF TOTAL
APPARENTLY NORMAL	202	195	197	181	200	975	93.57%
ASLEEP OR FATIGUED	0	0	0	0	0	0	0.00%
EMOTIONAL (depressed, angry, disturbed, etc.)	2	1	0	1	1	5	0.48%
ILL (sick)	0		0	0	0	0	0.00%
PHYSICALLY IMPAIRED OR HANDICAPPED	3	1	3	1	1	9	0.86%
UNDER THE INFLUENCE OF MEDICATIONS/DRUGS/ALCOHOL	2	9	7	2	5	25	2.40%
OTHER	4	5	1	1	2	13	1.25%
UNKNOWN	3	2	2	5	3	15	1.44%
TOTAL	216	213	210	191	212	1,042	100.00%



CONTRIBUTING FACTORS TO MAINE HIGHWAY BICYCLE CRASHES 2012 - 2016

DRIVER ACTIONS (actions 1 & 2 combined)	2012	2013	2014	2015	2016	Totals
NO CONTRIBUTING ACTION	123	107	109	87	107	533
RAN OFF ROADWAY	1	2	1	2	1	7
FAILED TO YIELD RIGHT-OF-WAY	58	60	53	50	60	281
RAN RED LIGHT	0	1	2	0	0	3
RAN STOP SIGN	4	4	4	1	3	16
DISREGARDED OTHER TRAFFIC SIGN	1	0	0	1	1	3
DISREGARDED OTHER ROAD MARKINGS	1	0	0	1	0	2
EXCEEDED POSTED SPEED LIMIT	0	0	0	1	2	3
DROVE TOO FAST FOR CONDITIONS	0	0	0	1	0	1
IMPROPER TURN	5	7	5	11	9	37
IMPROPER BACKING	4	1	2	0	2	9
IMPROPER PASSING	2	1	1	2	3	9
WRONG WAY	0	0	0	0	0	0
FOLLOWED TOO CLOSELY	0	2	1	2	0	5
FAILED TO KEEP IN PROPER LANE	4	1	0	3	2	10
OPERATED MOTOR VEHICLE IN ERRATIC, RECKLESS, CARELESS, NEGLIGENT OR AGGRESSIVE MANNER	3	6	1	2	5	17
SWERVED OR AVOIDED DUE TO WIND, SLIPPERY SURFACE, MOTOR VEHICLE, OBJECT, NON-MOTORIST IN ROADWAY	4	0	4	1	1	10
OVER-CORRECTING/OVER-STEERING	0	0	0	0	0	0
OTHER CONTRIBUTING ACTION	14	12	7	13	8	54
UNKNOWN	9	20	11	14	7	61
BICYCLIST ACTIONS	233	224	201	192	211	1061
RIDING WITH TRAFFIC	91	98	90	77	77	433
RIDING AGAINST TRAFFIC	38	29	30	21	39	157
MAKING RIGHT TURN	3	0	2	3	3	11
MAKING LEFT TURN	10	8	9	8	12	47
MAKING U TURN	0	1	0	0	2	3
RIDING ACROSS ROAD	42	43	49	46	47	227
SLOWING, STOPPING, STARTING IN ROAD	3	9	3	4	2	21
OTHER BYCLIST ACTION	14	10	15	19	16	74
UNKNOWN	1	4	2	3	4	14
VEHICULAR FACTORS	202	202	200	181	202	987
NONE	209	193	191	172	193	958
BRAKES	3	0	0	0	1	4
EXHAUST SYSTEM	0	0	0	0	1	1
BODY, DOORS	2	1	0	1	0	4
STEERING	0	0	0	0	0	0
POWER TRAIN	0	0	0	0	0	0
SUSPENSION	0	0	0	0	0	0
TIRES	0	0	0	0	0	0
WHEELS	0	0	0	0	0	0
LIGHTS (head, signal, tail, brake)	0	0	0	0	0	0
WINDOWS/WINDSHIELD	0	0	0	0	0	0
MIRRORS	0	0	0	0	0	0
WIPERS	0	0	0	0	0	0
TRUCK COUPLING/TRAILER HITCH/SAFETY CHAINS	0	0	0	0	0	0
OTHER	1	6	2	1	2	12
	215	200	193	174	197	979

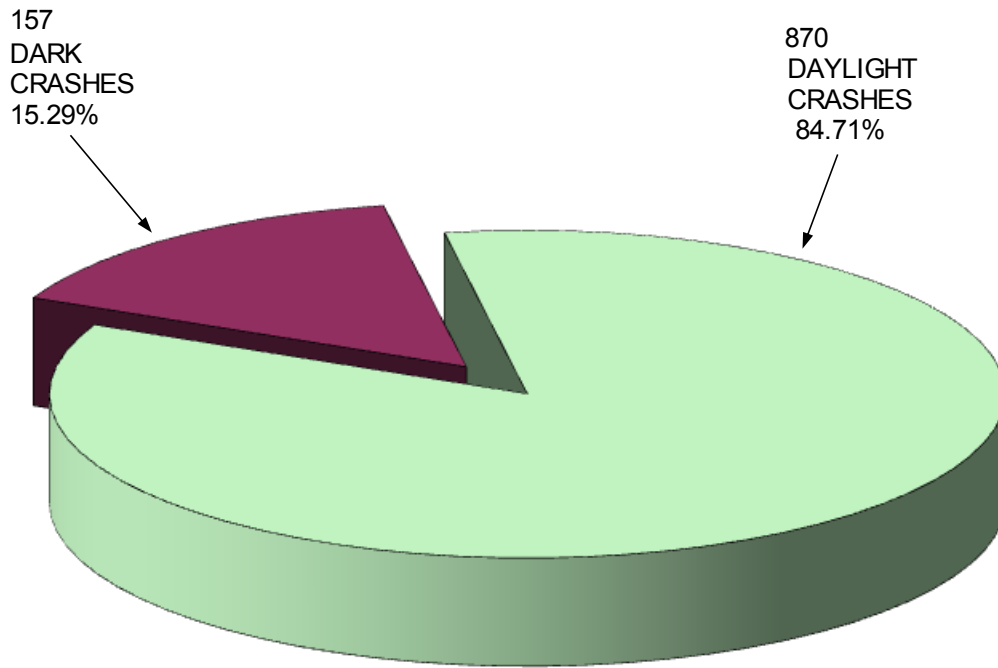


VEHICLES INVOLVED IN MAINE HIGHWAY BICYCLE CRASHES 2011-2016

VEHICLE TYPE INVOLVED IN BICYCLE CRASHES	2012	2013	2014	2015	2016	FIVE YEAR TOTAL
PASSENGER CAR	125	117	132	105	123	602
(SPORT) UTILITY VEHICLE	31	34	26	38	31	160
PASSENGER VAN	10	7	8	7	10	42
CARGO VAN (10k or less)	2	2	2	1	3	10
PICKUP TRUCK	37	38	28	22	31	156
MOTOR HOME	0	0	0	0	1	1
SCHOOL BUS	0	0	0	1	0	1
TRANSIT BUS	2	1	1	0	0	4
MOTOR COACH	0	0	0	0	0	0
OTHER BUS	0	0	0	0	0	0
MOTORCYCLE	2	1	2	4	3	12
MOPED	1	0	0	0	0	1
LOW SPEED VEHICLE	0	0	0	0	0	0
AUTOCYCLE	1	0	0	0	0	1
EXPERIMENTAL	0	0	0	0	0	0
OTHER LIGHT TRUCK (10,000 lbs or less)	0	0	0	1	0	1
MEDIUM /HEAVY TRUCKS (more than 10,000 lbs)	0	3	2	2	2	9
ATV (2,3,4-WHEEL)	0	0	0	0	0	0
SNOWMOBILE	0	0	0	0	0	0
PEDESTRIAN	1	0	1	1	1	4
BICYCLE	216	213	210	191	212	1,042
OTHER	3	13	7	5	5	33
TOTAL VEHICLES INVOLVED	431	429	419	378	422	2,079



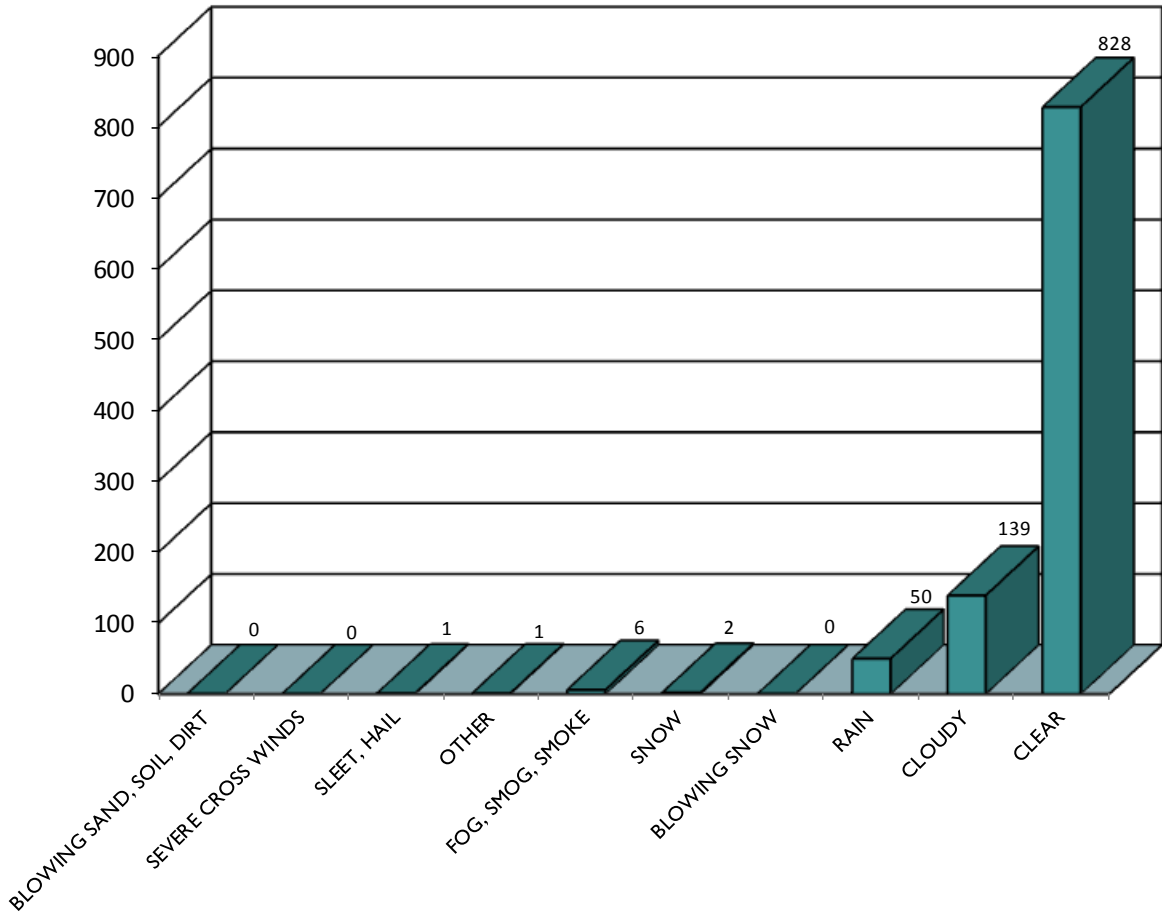
MAINE HIGHWAY BICYCLE CRASHES BY LIGHT CONDITION 2012 - 2016



LIGHT CONDITION	2012	2013	2014	2015	2016	FIVE YEAR TOTAL	PERCENT OF TOTAL
DAYLIGHT	179	182	174	164	171	870	84.71%
DARK	34	27	33	25	38	157	15.29%
TOTAL	213	209	207	189	209	1,027	100.00%



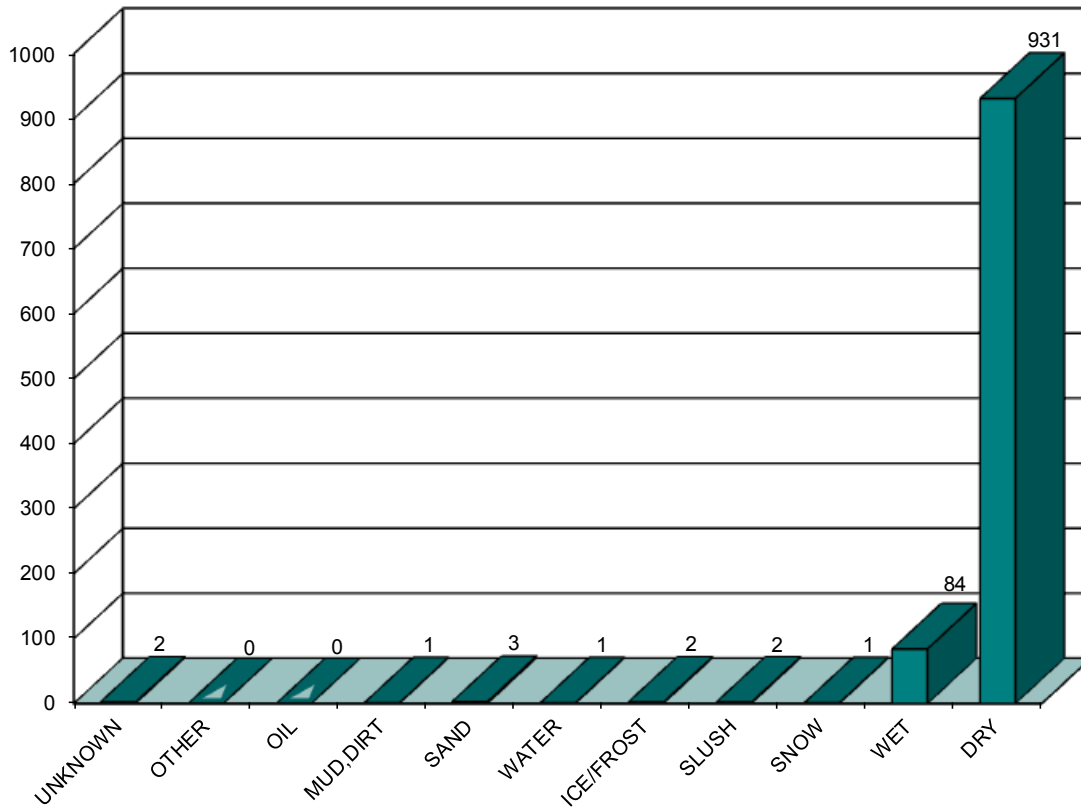
MAINE HIGHWAY BICYCLE CRASHES BY WEATHER CONDITIONS 2012 - 2016



WEATHER CONDITIONS	2012	2013	2014	2015	2016	FIVE YEAR TOTAL
BLOWING SAND, SOIL, DIRT	0	0	0	0	0	0
SEVERE CROSS WINDS	0	0	0	0	0	0
SLEET,HAIL (freezing rain or drizzle)	1	0	0	0	0	1
OTHER	0	0	0	1	0	1
FOG,SMOG,SMOKE	3	1	0	1	1	6
SNOW	0	1	0	1	0	2
BLOWING SNOW	0	0	0	0	0	0
RAIN	12	9	15	7	7	50
CLOUDY	25	27	26	29	32	139
CLEAR	172	171	166	150	169	828
TOTAL	213	209	207	189	209	1,027



MAINE HIGHWAY BICYCLE CRASHES BY ROAD SURFACE CONDITIONS 2012 - 2016



ROAD SURFACE CONDITIONS	2012	2013	2014	2015	2016	FIVE YEAR TOTAL
UNKNOWN	0	1	0	1	0	2
OTHER	0	0	0	0	0	0
OIL	0	0	0	0	0	0
MUD,DIRT	0	1	0	0	0	1
SAND	0	1	1	1	0	3
WATER (standing, moving)	0	1	0	0	0	1
ICE/FROST	2	0	0	0	0	2
SLUSH	1	0	0	1	0	2
SNOW	0	1	0	0	0	1
WET	17	16	20	15	16	84
DRY	193	188	186	171	193	931
TOTAL	213	209	207	189	209	1,027

