



# HEALTH QUARTERLY STATEMENT

As of June 30, 2009  
of the Condition and Affairs of the

## Select Care Of Maine, Inc.

NAIC Group Code.....953, 953 (Current Period) (Prior Period) NAIC Company Code..... 13627 Employer's ID Number..... 20-4156007

Organized under the Laws of Maine State of Domicile or Port of Entry Maine Country of Domicile US

Licensed as Business Type Health Maintenance Organization Is HMO Federally Qualified? Yes [ ] No [X]

Incorporated/Organized..... November 30, 2005 Commenced Business.. April 2, 2009

Statutory Home Office 4888 Loop Central Drive, Suite 700..... 77081 (Street and Number) (City or Town, State and Zip Code)  
Main Administrative Office 4888 Loop Central Drive, Suite 700..... Houston TX 77081 (Street and Number) (City or Town, State and Zip Code) 713-770-1111 (Area Code) (Telephone Number)  
Mail Address 4888 Loop Central Drive, Suite 700..... Houston TX 77081 (Street and Number or P. O. Box) (City or Town, State and Zip Code)  
Primary Location of Books and Records 4888 Loop Central Drive, Suite 700..... Houston TX 77081 (Street and Number) (City or Town, State and Zip Code) 713-770-1111 (Area Code) (Telephone Number)  
Internet Web Site Address www.universalamerican.com  
Statutory Statement Contact Travis Christie (Name) 713-770-1111 (Area Code) (Telephone Number) (Extension) tchristie@universalamerican.com 713-770-1241 (E-Mail Address) (Fax Number)

### OFFICERS

Name	Title	Name	Title
1. Theodore	President	2. StevenCharles Holman	Secretary, Treasurer, CFO
3.		4.	

### OTHER

### DIRECTORS OR TRUSTEES

Richard A Barasch Theodore Carpenter, Jr. Steven C. Holman Robert A. Waegelein  
Gary Jacobs

State of..... Texas  
County of..... Harris

The officers of this reporting entity being duly sworn, each depose and say that they are the described officers of said reporting entity, and that on the reporting period stated above, all of the herein described assets were the absolute property of the said reporting entity, free and clear from any liens or claims thereon, except as herein stated, and that this statement, together with related exhibits, schedules and explanations therein contained, annexed or referred to, is a full and true statement of all the assets and liabilities and of the condition and affairs of the said reporting entity as of the reporting period stated above, and of its income and deductions therefrom for the period ended, and have been completed in accordance with the NAIC Annual Statement Instructions and Accounting Practices and Procedures manual except to the extent that: (1) state law may differ; or, (2) that state rules or regulations require differences in reporting not related to accounting practices and procedures, according to the best of their information, knowledge and belief, respectively. Furthermore, the scope of this attestation by the described officers also includes the related corresponding electronic filing with the NAIC, when required, that is an exact copy (except for formatting differences due to electronic filing) of the enclosed statement. The electronic filing may be requested by various regulators in lieu of or in addition to the enclosed statement.

_____ (Signature) Theodore Marvin Carpenter, Jr. 1. (Printed Name) _____ President (Title)	_____ (Signature) Steven Charles Holman 2. (Printed Name) _____ Secretary, Treasurer, CFO (Title)	_____ (Signature) 3. (Printed Name) _____ (Title)
--	---	---

Subscribed and sworn to before me This \_\_\_\_\_ day of \_\_\_\_\_

a. Is this an original filing? Yes [X] No [ ]  
b. If no: 1. State the amendment number \_\_\_\_\_  
2. Date filed \_\_\_\_\_  
3. Number of pages attached \_\_\_\_\_

## ASSETS

	Current Statement Date			4 December 31 Prior Year Net Admitted Assets
	1 Assets	2 Nonadmitted Assets	3 Net Admitted Assets (Cols. 1 - 2)	
1. Bonds.....	109,749		109,749	
2. Stocks:				
2.1 Preferred stocks.....			.0	
2.2 Common stocks.....			.0	
3. Mortgage loans on real estate:				
3.1 First liens.....			.0	
3.2 Other than first liens.....			.0	
4. Real estate:				
4.1 Properties occupied by the company (less \$.....0 encumbrances).....			.0	
4.2 Properties held for the production of income (less \$.....0 encumbrances).....			.0	
4.3 Properties held for sale (less \$.....0 encumbrances).....			.0	
5. Cash (\$.....0), cash equivalents (\$.....0) and short-term investments (\$.....1,411,058).....	1,411,058		1,411,058	
6. Contract loans (including \$.....0 premium notes).....			.0	
7. Other invested assets.....			.0	
8. Receivables for securities.....			.0	
9. Aggregate write-ins for invested assets.....	.0	.0	.0	.0
10. Subtotals, cash and invested assets (Lines 1 to 9).....	1,520,807	.0	1,520,807	.0
11. Title plants less \$.....0 charged off (for Title insurers only).....			.0	
12. Investment income due and accrued.....	856		856	
13. Premiums and considerations:				
13.1 Uncollected premiums and agents' balances in the course of collection.....			.0	
13.2 Deferred premiums, agents' balances and installments booked but deferred and not yet due (including \$.....0 earned but unbilled premiums).....			.0	
13.3 Accrued retrospective premiums.....			.0	
14. Reinsurance:				
14.1 Amounts recoverable from reinsurers.....			.0	
14.2 Funds held by or deposited with reinsured companies.....			.0	
14.3 Other amounts receivable under reinsurance contracts.....			.0	
15. Amounts receivable relating to uninsured plans.....			.0	
16.1 Current federal and foreign income tax recoverable and interest thereon.....			.0	
16.2 Net deferred tax asset.....			.0	
17. Guaranty funds receivable or on deposit.....			.0	
18. Electronic data processing equipment and software.....			.0	
19. Furniture and equipment, including health care delivery assets (\$.....0).....			.0	
20. Net adjustment in assets and liabilities due to foreign exchange rates.....			.0	
21. Receivables from parent, subsidiaries and affiliates.....			.0	
22. Health care (\$.....0) and other amounts receivable.....			.0	
23. Aggregate write-ins for other than invested assets.....	.0	.0	.0	.0
24. Total assets excluding Separate Accounts, Segregated Accounts and Protected Cell Accounts (Lines 10 through 23).....	1,521,663	.0	1,521,663	.0
25. From Separate Accounts, Segregated Accounts and Protected Cell Accounts.....			.0	
26. Total (Lines 24 and 25).....	1,521,663	.0	1,521,663	.0

### DETAILS OF WRITE-INS

0901.....			.0	
0902.....			.0	
0903.....			.0	
0998. Summary of remaining write-ins for Line 9 from overflow page.....	.0	.0	.0	.0
0999. Totals (Lines 0901 thru 0903 plus 0998) (Line 9 above).....	.0	.0	.0	.0
2301.....			.0	
2302.....			.0	
2303.....			.0	
2398. Summary of remaining write-ins for Line 23 from overflow page.....	.0	.0	.0	.0
2399. Totals (Lines 2301 thru 2303 plus 2398) (Line 23 above).....	.0	.0	.0	.0

## LIABILITIES, CAPITAL AND SURPLUS

	Current Period			Prior Year
	1 Covered	2 Uncovered	3 Total	4 Total
1. Claims unpaid (less \$.....0 reinsurance ceded).....			0	
2. Accrued medical incentive pool and bonus amounts.....			0	
3. Unpaid claims adjustment expenses.....			0	
4. Aggregate health policy reserves.....			0	
5. Aggregate life policy reserves.....			0	
6. Property/casualty unearned premium reserve.....			0	
7. Aggregate health claim reserves.....			0	
8. Premiums received in advance.....			0	
9. General expenses due or accrued.....			0	
10.1 Current federal and foreign income tax payable and interest thereon (including \$.....0 on realized gains (losses)).....	582		582	
10.2 Net deferred tax liability.....			0	
11. Ceded reinsurance premiums payable.....			0	
12. Amounts withheld or retained for the account of others.....			0	
13. Remittances and items not allocated.....			0	
14. Borrowed money (including \$.....0 current) and interest thereon \$.....0 (including \$.....0 current).....			0	
15. Amounts due to parent, subsidiaries and affiliates.....			0	
16. Payable for securities.....			0	
17. Funds held under reinsurance treaties with (\$.....0 authorized reinsurers and \$.....0 unauthorized reinsurers).....			0	
18. Reinsurance in unauthorized companies.....			0	
19. Net adjustments in assets and liabilities due to foreign exchange rates.....			0	
20. Liability for amounts held under uninsured plans.....			0	
21. Aggregate write-ins for other liabilities (including \$.....0 current).....	0	0	0	0
22. Total liabilities (Lines 1 to 21).....	582	0	582	0
23. Aggregate write-ins for special surplus funds.....	XXX	XXX	0	0
24. Common capital stock.....	XXX	XXX	1,000	
25. Preferred capital stock.....	XXX	XXX		
26. Gross paid in and contributed surplus.....	XXX	XXX	1,519,000	
27. Surplus notes.....	XXX	XXX		
28. Aggregate write-ins for other than special surplus funds.....	XXX	XXX	0	0
29. Unassigned funds (surplus).....	XXX	XXX	1,081	
30. Less treasury stock, at cost:				
30.1 .....0.000 shares common (value included in Line 24 \$.....0).....	XXX	XXX		
30.2 .....0.000 shares preferred (value included in Line 25 \$.....0).....	XXX	XXX		
31. Total capital and surplus (Lines 23 to 29 minus Line 30).....	XXX	XXX	1,521,081	0
32. Total liabilities, capital and surplus (Lines 22 and 31).....	XXX	XXX	1,521,663	0

### DETAILS OF WRITE-INS

2101. ....			0	
2102. ....			0	
2103. ....			0	
2198. Summary of remaining write-ins for Line 21 from overflow page.....	0	0	0	0
2199. Totals (Lines 2101 thru 2103 plus 2198) (Line 21 above).....	0	0	0	0
2301. ....				
2302. ....				
2303. ....				
2398. Summary of remaining write-ins for Line 23 from overflow page.....	XXX	XXX	0	0
2399. Totals (Lines 2301 thru 2303 plus 2398) (Line 23 above).....	XXX	XXX	0	0
2801. ....				
2802. ....				
2803. ....				
2898. Summary of remaining write-ins for Line 28 from overflow page.....	XXX	XXX	0	0
2899. Totals (Lines 2801 thru 2803 plus 2898) (Line 28 above).....	XXX	XXX	0	0

## STATEMENT OF REVENUE AND EXPENSES

	Current Year To Date		Prior Year To Date	Prior Year Ended December 31
	1 Uncovered	2 Total	3 Total	4 Total
1. Member months.....	XXX			
2. Net premium income (including \$.....0 non-health premium income).....	XXX			
3. Change in unearned premium reserves and reserve for rate credits.....	XXX			
4. Fee-for-service (net of \$.....0 medical expenses).....	XXX			
5. Risk revenue.....	XXX			
6. Aggregate write-ins for other health care related revenues.....	XXX	.0	.0	.0
7. Aggregate write-ins for other non-health revenues.....	XXX	.0	.0	.0
8. Total revenues (Lines 2 to 7).....	XXX	.0	.0	.0
<b>Hospital and Medical:</b>				
9. Hospital/medical benefits.....				
10. Other professional services.....				
11. Outside referrals.....				
12. Emergency room and out-of-area.....				
13. Prescription drugs.....				
14. Aggregate write-ins for other hospital and medical.....	.0	.0	.0	.0
15. Incentive pool, withhold adjustments and bonus amounts.....				
16. Subtotal (Lines 9 to 15).....	.0	.0	.0	.0
<b>Less:</b>				
17. Net reinsurance recoveries.....				
18. Total hospital and medical (Lines 16 minus 17).....	.0	.0	.0	.0
19. Non-health claims (net).....				
20. Claims adjustment expenses, including \$.....0 cost containment expenses.....				
21. General administrative expenses.....				
22. Increase in reserves for life and accident and health contracts (including \$.....0 increase in reserves for life only).....				
23. Total underwriting deductions (Lines 18 through 22).....	.0	.0	.0	.0
24. Net underwriting gain or (loss) (Lines 8 minus 23).....	XXX	.0	.0	.0
25. Net investment income earned.....		1,663		
26. Net realized capital gains (losses) less capital gains tax of \$.....0.....				
27. Net investment gains or (losses) (Lines 25 plus 26).....	.0	1,663	.0	.0
28. Net gain or (loss) from agents' or premium balances charged off [(amount recovered \$.....0) (amount charged off \$.....0)].....				
29. Aggregate write-ins for other income or expenses.....	.0	.0	.0	.0
30. Net income or (loss) after capital gains tax and before all other federal income taxes (Lines 24 plus 27 plus 28 plus 29).....	XXX	1,663	.0	.0
31. Federal and foreign income taxes incurred.....	XXX	582		
32. Net income (loss) (Lines 30 minus 31).....	XXX	1,081	.0	.0

### DETAILS OF WRITE-INS

0601. ....	XXX			
0602. ....	XXX			
0603. ....	XXX			
0698. Summary of remaining write-ins for Line 6 from overflow page.....	XXX	.0	.0	.0
0699. Totals (Lines 0601 thru 0603 plus 0698) (Line 6 above).....	XXX	.0	.0	.0
0701. ....	XXX			
0702. ....	XXX			
0703. ....	XXX			
0798. Summary of remaining write-ins for Line 7 from overflow page.....	XXX	.0	.0	.0
0799. Totals (Lines 0701 thru 0703 plus 0798) (Line 7 above).....	XXX	.0	.0	.0
1401. ....				
1402. ....				
1403. ....				
1498. Summary of remaining write-ins for Line 14 from overflow page.....	.0	.0	.0	.0
1499. Totals (Lines 1401 thru 1403 plus 1498) (Line 14 above).....	.0	.0	.0	.0
2901. ....				
2902. ....				
2903. ....				
2998. Summary of remaining write-ins for Line 29 from overflow page.....	.0	.0	.0	.0
2999. Totals (Lines 2901 thru 2903 plus 2998) (Line 29 above).....	.0	.0	.0	.0

**STATEMENT OF REVENUE AND EXPENSES (Continued)**

CAPITAL AND SURPLUS ACCOUNT	1 Current Year to Date	2 Prior Year To Date	3 Prior Year Ended December 31
33. Capital and surplus prior reporting year.....	0		
34. Net income or (loss) from Line 32.....	1,081		
35. Change in valuation basis of aggregate policy and claim reserves.....			
36. Change in net unrealized capital gains (losses) less capital gains tax of \$.....0.....			
37. Change in net unrealized foreign exchange capital gain or (loss).....			
38. Change in net deferred income tax.....			
39. Change in nonadmitted assets.....			
40. Change in unauthorized reinsurance.....			
41. Change in treasury stock.....			
42. Change in surplus notes.....			
43. Cumulative effect of changes in accounting principles.....			
44. Capital changes:			
44.1 Paid in.....	1,000		
44.2 Transferred from surplus (Stock Dividend).....			
44.3 Transferred to surplus.....			
45. Surplus adjustments:			
45.1 Paid in.....	1,519,000		
45.2 Transferred to capital (Stock Dividend).....			
45.3 Transferred from capital.....			
46. Dividends to stockholders.....			
47. Aggregate write-ins for gains or (losses) in surplus.....	0	0	0
48. Net change in capital and surplus (Lines 34 to 47).....	1,521,081	0	0
49. Capital and surplus end of reporting period (Line 33 plus 48).....	1,521,081	0	0

**DETAILS OF WRITE-INS**

4701. ....			
4702. ....			
4703. ....			
4798. Summary of remaining write-ins for Line 47 from overflow page.....	0	0	0
4799. Totals (Lines 4701 thru 4703 plus 4798) (Line 47 above).....	0	0	0

## CASH FLOW

	1 Current Year to Date	2 Prior Year Ended December 31
<b>CASH FROM OPERATIONS</b>		
1. Premiums collected net of reinsurance.....		
2. Net investment income.....	.807	
3. Miscellaneous income.....		
4. Total (Lines 1 through 3).....	.807	.0
5. Benefit and loss related payments.....		
6. Net transfers to Separate Accounts, Segregated Accounts and Protected Cell Accounts.....		
7. Commissions, expenses paid and aggregate write-ins for deductions.....		
8. Dividends paid to policyholders.....		
9. Federal and foreign income taxes paid (recovered) net of \$.....0 tax on capital gains (losses).....		
10. Total (Lines 5 through 9).....	.0	.0
11. Net cash from operations (Line 4 minus Line 10).....	.807	.0
<b>CASH FROM INVESTMENTS</b>		
12. Proceeds from investments sold, matured or repaid:		
12.1 Bonds.....		
12.2 Stocks.....		
12.3 Mortgage loans.....		
12.4 Real estate.....		
12.5 Other invested assets.....		
12.6 Net gains or (losses) on cash, cash equivalents and short-term investments.....		
12.7 Miscellaneous proceeds.....		
12.8 Total investment proceeds (Lines 12.1 to 12.7).....	.0	.0
13. Cost of investments acquired (long-term only):		
13.1 Bonds.....	109,749	
13.2 Stocks.....		
13.3 Mortgage loans.....		
13.4 Real estate.....		
13.5 Other invested assets.....		
13.6 Miscellaneous applications.....		
13.7 Total investments acquired (Lines 13.1 to 13.6).....	109,749	.0
14. Net increase (decrease) in contract loans and premium notes.....		
15. Net cash from investments (Line 12.8 minus Line 13.7 and Line 14).....	(109,749)	.0
<b>CASH FROM FINANCING AND MISCELLANEOUS SOURCES</b>		
16. Cash provided (applied):		
16.1 Surplus notes, capital notes.....		
16.2 Capital and paid in surplus, less treasury stock.....	1,520,000	
16.3 Borrowed funds.....		
16.4 Net deposits on deposit-type contracts and other insurance liabilities.....		
16.5 Dividends to stockholders.....		
16.6 Other cash provided (applied).....		
17. Net cash from financing and miscellaneous sources (Lines 16.1 through 16.4 minus Line 16.5 plus Line 16.6).....	1,520,000	.0
<b>RECONCILIATION OF CASH, CASH EQUIVALENTS AND SHORT-TERM INVESTMENTS</b>		
18. Net change in cash, cash equivalents and short-term investments (Line 11 plus Line 15 plus Line 17).....	1,411,058	.0
19. Cash, cash equivalents and short-term investments:		
19.1 Beginning of year.....	.0	
19.2 End of period (Line 18 plus Line 19.1).....	1,411,058	.0

Note: Supplemental disclosures of cash flow information for non-cash transactions:

20.0001 .....		
---------------	--	--

### EXHIBIT OF PREMIUMS, ENROLLMENT AND UTILIZATION

	1 Total	Comprehensive (Hospital & Medical)		4 Medicare Supplement	5 Vision Only	6 Dental Only	7 Federal Employees Health Benefit Plan	8 Title XVIII Medicare	9 Title XIX Medicaid	10 Other
		2 Individual	3 Group							
<b>Total Members at End of:</b>										
1. Prior Year.....	0									
2. First Quarter.....	0									
3. Second Quarter.....	0									
4. Third Quarter.....	0									
5. Current Year.....	0									
6. Current Year Member Months.....	0									
<b>Total Member Ambulatory Encounters for Period:</b>										
7. Physician.....	0									
8. Non-Physician.....	0									
9. Total.....	0	0	0	<b>NONE</b>	0	0	0	0	0	0
10. Hospital Patient Days Incurred.....	0									
11. Number of Inpatient Admissions.....	0									
12. Health Premiums Written (a).....	0									
13. Life Premiums Direct.....	0									
14. Property/Casualty Premiums Written.....	0									
15. Health Premiums Earned.....	0									
16. Property/Casualty Premiums Earned.....	0									
17. Amount Paid for Provision of Health Care Services.....	0									
18. Amount Incurred for Provision of Health Care Services.....	0									

007

(a) For health premiums written: Amount of Medicare Title XVIII exempt from state taxes or fees \$.....0.

**CLAIMS UNPAID AND INCENTIVE POOL, WITHHOLD AND BONUS (Reported and Unreported)**

Aging Analysis of Unpaid Claims

1 Account	2 1 - 30 Days	3 31 - 60 Days	4 61 - 90 Days	5 91 - 120 Days	6 Over 120 Days	7 Total
--------------	------------------	-------------------	-------------------	--------------------	--------------------	------------

**NONE**

## UNDERWRITING AND INVESTMENT EXHIBIT

### Analysis of Claims Unpaid - Prior Year - Net of Reinsurance

Line of Business	Claims Paid Year to Date		Liability End of Current Quarter		5 Claims Incurred in Prior Years (Columns 1 + 3)	6 Estimated Claim Reserve and Claim Liability December 31 of Prior Year
	1 On Claims Incurred Prior to January 1 of Current Year	2 On Claims Incurred During the Year	3 On Claims Unpaid December 31 of Prior Year	4 On Claims Incurred During the Year		
1. Comprehensive (hospital and medical).....					0	
2. Medicare Supplement.....					0	
3. Dental only.....					0	
4. Vision only.....					0	
5. Federal Employees Health Benefits Plan.....					0	
6. Title XVIII - Medicare.....					0	
7. Title XIX - Medicaid.....					0	
8. Other health.....					0	
9. Health subtotal (Lines 1 to 8).....	0	0	0	0	0	0
10. Healthcare receivables (a).....					0	
11. Other non-health.....					0	
12. Medical incentive pools and bonus amounts.....					0	
13. Totals.....	0	0	0	0	0	0

NONE

600

(a) Excludes \$.....0 loans or advances to providers not yet expensed.

---

## **NOTES TO FINANCIAL STATEMENTS**

---

### **Note 1 - Summary of Significant Accounting Policies**

No significant change.

### **Note 2 - Accounting Changes and Corrections of Errors**

No significant change.

### **Note 3 - Business Combinations and Goodwill**

No significant change.

### **Note 4 - Discontinued Operations**

No significant change.

### **Note 5 - Investments**

No significant change.

### **Note 6 - Joint Ventures, Partnerships and Limited Liability Companies**

No significant change.

### **Note 7 - Investment Income**

No significant change.

### **Note 8 - Derivative Instruments**

No significant change.

### **Note 9 - Income Taxes**

No significant change.

### **Note 10 - Information Concerning Parent, Subsidiaries, Affiliates and Other Related Parties**

No significant change.

### **Note 11 - Debt**

No significant change.

### **Note 12 - Retirement Plans, Deferred Compensation, Postemployment Benefits and Compensated Absences and Other Postretirement Benefit Plans**

No significant change.

### **Note 13 - Capital and Surplus, Shareholders' Dividend Restrictions and Quasi-Reorganizations**

No significant change.

### **Note 14 - Contingencies**

No significant change.

### **Note 15 - Leases**

No significant change.

---

## **NOTES TO FINANCIAL STATEMENTS**

---

**Note 16 - Information About Financial Instruments With Off-Balance Sheet Risk and Financial Instruments With Concentrations of Credit Risk**

No significant change.

**Note 17 - Sale, Transfer and Servicing of Financial Assets and Extinguishments of Liabilities**

C. NOTE: This disclosure is required in every filing for the Quarterly Statement.

**Note 18 - Gain or Loss to the Reporting Entity from Uninsured Plans and the Uninsured Portion of Partially Insured Plans**

No significant change.

**Note 19 - Direct Premium Written/Produced by Managing General Agents/Third Party Administrators**

No significant change.

**Note 20 - Other Items**

No significant change.

**Note 21 - Events Subsequent**

No significant change.

**Note 22 - Reinsurance**

No significant change.

**Note 23 - Retrospectively Rated Contracts & Contracts Subject to Redetermination**

No significant change.

**Note 24 - Change in Incurred Losses and Loss Adjustment Expenses**

NOTE: This disclosure is required in every filing for the Quarterly Statement.

**Note 25 - Intercompany Pooling Arrangements**

No significant change.

**Note 26 - Structured Settlements**

Not applicable.

**Note 27 - Health Care Receivables**

No significant change.

**Note 28 - Participating Policies**

No significant change.

**Note 29 - Premium Deficiency Reserves**

No significant change.

**Note 30 - Anticipated Salvage and Subrogation**

No significant change.

## GENERAL INTERROGATORIES

(Responses to these interrogatories should be based on changes that have occurred since prior year end unless otherwise noted)

### PART 1 - COMMON INTERROGATORIES

#### GENERAL

- 1.1 Did the reporting entity experience any material transactions requiring the filing of Disclosure of Material Transactions with the State of Domicile, as required by the Model Act? Yes [ ] No [X]
- 1.2 If yes, has the report been filed with the domiciliary state? Yes [ ] No [ ]
- 2.1 Has any change been made during the year of this statement in the charter, by-laws, articles of incorporation, or deed of settlement of the reporting entity? Yes [ ] No [X]
- 2.2 If yes, date of change: .....
3. Have there been any substantial changes in the organizational chart since the prior quarter end? Yes [X] No [ ]  
If yes, complete the Schedule Y-Part 1 - Organizational chart.
- 4.1 Has the reporting entity been a party to a merger or consolidation during the period covered by this statement? Yes [ ] No [X]
- 4.2 If yes, provide name of entity, NAIC Company Code, and state of domicile (use two letter state abbreviation) for any entity that has ceased to exist as a result of the merger or consolidation.

1 Name of Entity	2 NAIC Company Code	3 State of Domicile

5. If the reporting entity is subject to a management agreement, including third-party administrator(s), managing general agent(s), attorney-in-fact, or similar agreement, have there been any significant changes regarding the terms of the agreement or principals involved? Yes [ ] No [X] N/A [ ]  
If yes, attach an explanation.
- \_\_\_\_\_
- \_\_\_\_\_

- 6.1 State as of what date the latest financial examination of the reporting entity was made or is being made. ....
- 6.2 State the as of date that the latest financial examination report became available from either the state of domicile or the reporting entity. This date should be the date of the examined balance sheet and not the date the report was completed or released. ....
- 6.3 State as of what date the latest financial examination report became available to other states or the public from either the state of domicile or the reporting entity. This is the release date or completion date of the examination report and not the date of the examination (balance sheet date). ....
- 6.4 By what department or departments?  
\_\_\_\_\_  
\_\_\_\_\_

- 6.5 Have all financial statement adjustments within the latest financial examination report been accounted for in a subsequent financial statement filed with Departments? Yes [ ] No [X] N/A [ ]
- 6.6 Have all of the recommendations within the latest financial examination report been complied with? Yes [ ] No [X] N/A [ ]
- 7.1 Has this reporting entity had any Certificates of Authority, licenses or registrations (including corporate registration, if applicable) suspended or revoked by any governmental entity during the reporting period? Yes [ ] No [X]
- 7.2 If yes, give full information:  
\_\_\_\_\_  
\_\_\_\_\_

- 8.1 Is the company a subsidiary of a bank holding company regulated by the Federal Reserve Board? Yes [ ] No [X]
- 8.2 If response to 8.1 is yes, please identify the name of the bank holding company.  
\_\_\_\_\_  
\_\_\_\_\_

- 8.3 Is the company affiliated with one or more banks, thrifts or securities firms? Yes [ ] No [X]
- 8.4 If the response to 8.3 is yes, please provide below the names and location (city and state of the main office) of any affiliates regulated by a federal regulatory services agency [i.e. the Federal Reserve Board (FRB), the Office of the Comptroller of the Currency (OCC), the Office of Thrift Supervision (OTS), the Federal Deposit Insurance Corporation (FDIC) and the Securities Exchange Commission (SEC)] and identify the affiliate's primary federal regulator].

1 Affiliate Name	2 Location (City, State)	3 FRB	4 OCC	5 OTS	6 FDIC	7 SEC

- 9.1 Are the senior officers (principal executive officer, principal financial officer, principal accounting officer or controller, or persons performing similar functions) of the reporting entity subject to a code of ethics, which includes the following standards? Yes [X] No [ ]
- (a) Honest and ethical conduct, including the ethical handling of actual or apparent conflicts of interest between personal and professional relationships;
- (b) Full, fair, accurate, timely and understandable disclosure in the periodic reports required to be filed by the reporting entity;
- (c) Compliance with applicable governmental laws, rules and regulations;
- (d) The prompt internal reporting of violations to an appropriate person or persons identified in the code; and
- (e) Accountability for adherence to the code.

- 9.11 If the response to 9.1 is No, please explain:  
\_\_\_\_\_  
\_\_\_\_\_

- 9.2 Has the code of ethics for senior managers been amended? Yes [ ] No [X]
- 9.21 If the response to 9.2 is Yes, provide information related to amendment(s).  
\_\_\_\_\_  
\_\_\_\_\_

- 9.3 Have any provisions of the code of ethics been waived for any of the specified officers? Yes [ ] No [X]

## GENERAL INTERROGATORIES

(Responses to these interrogatories should be based on changes that have occurred since prior year end unless otherwise noted)

### PART 1 - COMMON INTERROGATORIES

9.31 If the response to 9.3 is Yes, provide the nature of any waiver(s).

---



---

#### FINANCIAL

10.1 Does the reporting entity report any amounts due from parent, subsidiaries or affiliates on Page 2 of this statement? Yes [ ] No [X]

10.2 If yes, indicate any amounts receivable from parent included in the Page 2 amount: .....

#### INVESTMENT

11.1 Were any of the stocks, bonds, or other assets of the reporting entity loaned, placed under option agreement, or otherwise made available for use by another person? (Exclude securities under securities lending agreements.) Yes [ ] No [X]

11.2 If yes, give full and complete information relating thereto:

---



---

12. Amount of real estate and mortgages held in other invested assets in Schedule BA: \$.....0

13. Amount of real estate and mortgages held in short-term investments: \$.....0

14.1 Does the reporting entity have any investments in parent, subsidiaries and affiliates? Yes [ ] No [X]

14.2 If yes, please complete the following:

	1 Prior Year-End Book/Adjusted Carrying Value	2 Current Quarter Book/Adjusted Carrying Value
14.21 Bonds.....	\$ .....0	\$ .....0
14.22 Preferred Stock.....	\$ .....0	\$ .....0
14.23 Common Stock.....	\$ .....0	\$ .....0
14.24 Short-Term Investments.....	\$ .....0	\$ .....0
14.25 Mortgage Loans on Real Estate.....	\$ .....0	\$ .....0
14.26 All Other.....	\$ .....0	\$ .....0
14.27 Total Investment in Parent, Subsidiaries and Affiliates (Subtotal Lines 14.21 to 14.26).....	\$ .....0	\$ .....0
14.28 Total Investment in Parent included in Lines 14.21 to 14.26 above.....	\$ .....0	\$ .....0

15.1 Has the reporting entity entered into any hedging transactions reported on Schedule DB? Yes [ ] No [X]

15.2 If yes, has a comprehensive description of the hedging program been made available to the domiciliary state? Yes [ ] No [X]  
If no, attach a description with this statement.

16. Excluding items in Schedule E-Part 3-Special Deposits, real estate, mortgage loans and investments held physically in the reporting entity's offices, vaults or safety deposit boxes, were all stocks, bonds and other securities, owned throughout the current year held pursuant to a custodial agreement with a qualified bank or trust company in accordance with Section 3, III. Conducting Examinations, F-Custodial or Safekeeping Agreements of the NAIC Financial Condition Examiners Handbook? Yes [X] No [ ]

16.1 For all agreements that comply with the requirements of the NAIC Financial Condition Examiners Handbook, complete the following:

1 Name of Custodian(s)	2 Custodian Address
U.S. Bank NA	50 S. 16th St, Suite 2000, Philadelphia, PA 19102

16.2 For all agreements that do not comply with the requirements of the NAIC Financial Condition Examiners Handbook, provide the name, location and a complete explanation.

1 Name(s)	2 Location(s)	3 Complete Explanation(s)

16.3 Have there been any changes, including name changes, in the custodian(s) identified in 16.1 during the current quarter? Yes [ ] No [X]

16.4 If yes, give full and complete information relating thereto:

1 Old Custodian	2 New Custodian	3 Date of Change	4 Reason

16.5 Identify all investment advisors, broker/dealers or individuals acting on behalf of broker/dealers that have access to the investment accounts, handle securities and have authority to make investments on behalf of the reporting entity:

1 Central Registration Depository	2 Name(s)	3 Address
	Conning Asset Management Co.	One Financial Plaza - 14th Floor, Hartford, CT 06103

17.1 Have all the filing requirements of the Purposes and Procedures Manual of the NAIC Securities Valuation Office been followed? Yes [X] No [ ]

17.2 If no, list exceptions:

---



---

## SCHEDULE S - CEDED REINSURANCE

Showing All New Reinsurance Treaties - Current Year to Date

1 NAIC Company Code	2 Federal ID Number	3 Effective Date	4 Name of Reinsurer	5 Location	6 Type of Reinsurance Ceded	7 Is Insurer Authorized? (YES or NO)
------------------------------	------------------------------	------------------------	------------------------	---------------	--------------------------------------	---

**NONE**

**SCHEDULE T - PREMIUMS AND OTHER CONSIDERATIONS**

Current Year to Date - Allocated by States and Territories

State, Etc.	1 Active Status	Direct Business Only							
		2 Accident and Health Premiums	3 Medicare Title XVIII	4 Medicaid Title XIX	5 Federal Employees Health Benefits Program Premiums	6 Life and Annuity Premiums and Other Considerations	7 Property/Casualty Premiums	8 Total Columns 2 through 7	9 Deposit-Type Contracts
1. Alabama.....AL									.0
2. Alaska.....AK									.0
3. Arizona.....AZ									.0
4. Arkansas.....AR									.0
5. California.....CA									.0
6. Colorado.....CO									.0
7. Connecticut.....CT									.0
8. Delaware.....DE									.0
9. District of Columbia.....DC									.0
10. Florida.....FL									.0
11. Georgia.....GA									.0
12. Hawaii.....HI									.0
13. Idaho.....ID									.0
14. Illinois.....IL									.0
15. Indiana.....IN									.0
16. Iowa.....IA									.0
17. Kansas.....KS									.0
18. Kentucky.....KY									.0
19. Louisiana.....LA									.0
20. Maine.....ME									.0
21. Maryland.....MD									.0
22. Massachusetts.....MA									.0
23. Michigan.....MI									.0
24. Minnesota.....MN									.0
25. Mississippi.....MS									.0
26. Missouri.....MO									.0
27. Montana.....MT									.0
28. Nebraska.....NE									.0
29. Nevada.....NV									.0
30. New Hampshire.....NH									.0
31. New Jersey.....NJ									.0
32. New Mexico.....NM									.0
33. New York.....NY									.0
34. North Carolina.....NC									.0
35. North Dakota.....ND									.0
36. Ohio.....OH									.0
37. Oklahoma.....OK									.0
38. Oregon.....OR									.0
39. Pennsylvania.....PA									.0
40. Rhode Island.....RI									.0
41. South Carolina.....SC									.0
42. South Dakota.....SD									.0
43. Tennessee.....TN									.0
44. Texas.....TX									.0
45. Utah.....UT									.0
46. Vermont.....VT									.0
47. Virginia.....VA									.0
48. Washington.....WA									.0
49. West Virginia.....WV									.0
50. Wisconsin.....WI									.0
51. Wyoming.....WY									.0
52. American Samoa.....AS									.0
53. Guam.....GU									.0
54. Puerto Rico.....PR									.0
55. U.S. Virgin Islands.....VI									.0
56. Northern Mariana Islands.....MP									.0
57. Canada.....CN									.0
58. Aggregate Other alien.....OT	...XXX..	.0	.0	.0	.0	.0	.0	.0	.0
59. Subtotal.....XXX..	Status Missing..	Status Missing..	Status Missing..	Status Missing..	Status Missing..	Status Missing..	Status Missing..	Status Missing..	Status Missing..
60. Reporting entity contributions for Employee Benefit Plans.....XXX..									.0
61. Total (Direct Business).....(a).....0		.0	.0	.0	.0	.0	.0	.0	.0

**NONE**

**DETAILS OF WRITE-INS**

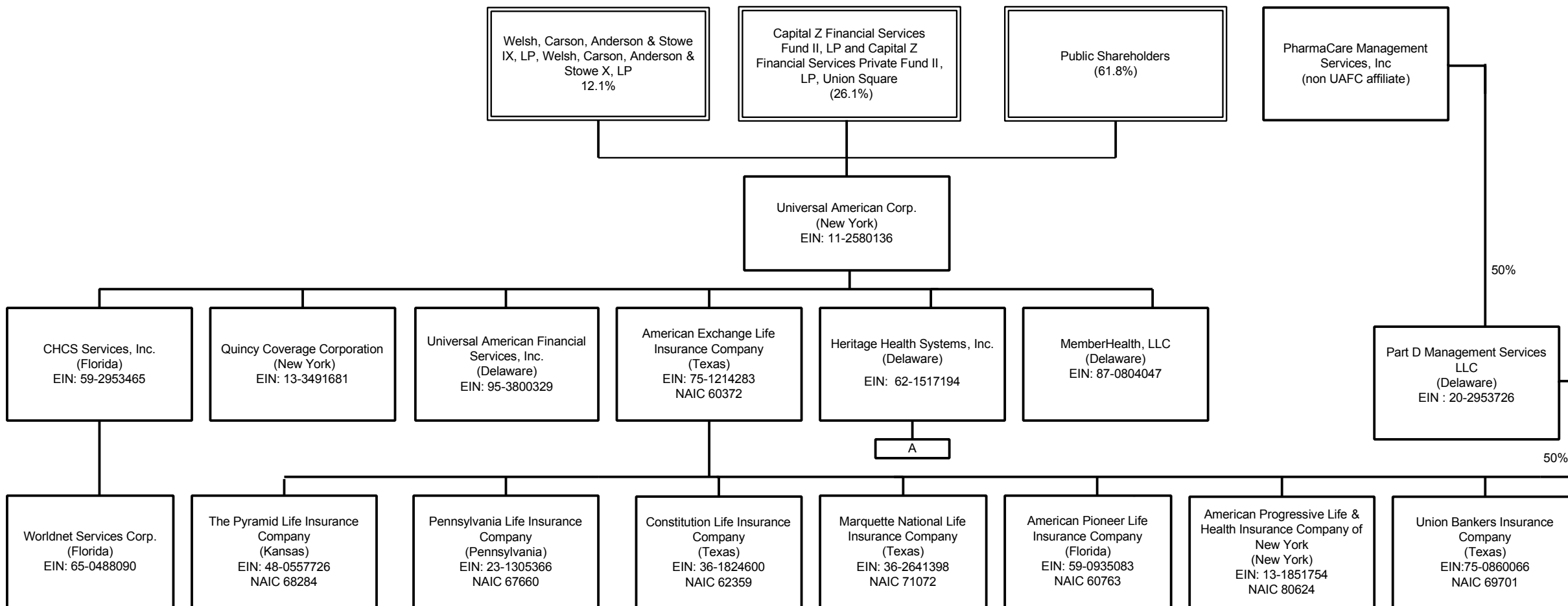
5801. ....									.0
5802. ....									.0
5803. ....									.0
5898. Summary of remaining write-ins for line 58 from overflow page.....		.0	.0	.0	.0	.0	.0	.0	.0
5899. Total (Lines 5801 thru 5803 plus 5898) (Line 58 above).....		.0	.0	.0	.0	.0	.0	.0	.0

(a) Insert the number of L responses except for Canada and Other Alien.

# SCHEDULE Y – INFORMATION CONCERNING ACTIVITIES OF INSURER MEMBERS OF A HOLDING COMPANY GROUP

## PART 1 – ORGANIZATIONAL CHART

(Ownership is 100% except as noted)

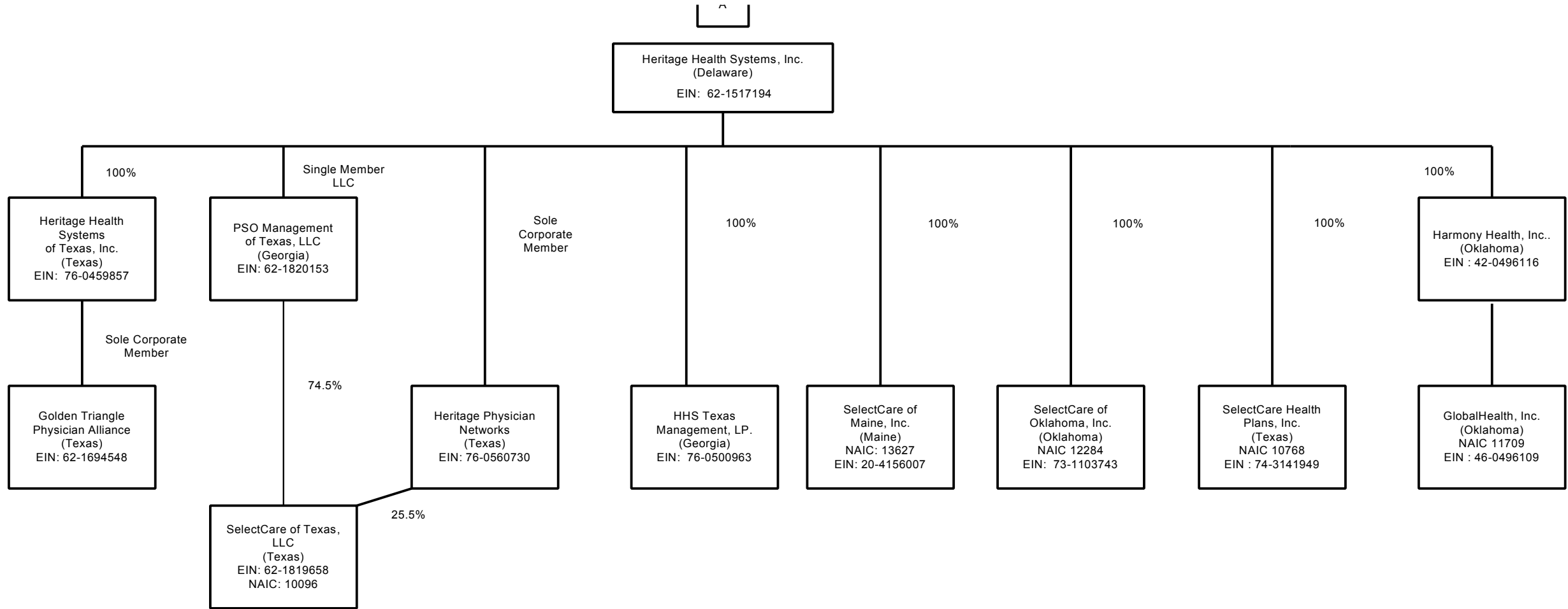


Q14

# SCHEDULE Y – INFORMATION CONCERNING ACTIVITIES OF INSURER MEMBERS OF A HOLDING COMPANY GROUP

## PART 1 – ORGANIZATIONAL CHART

Q14.1



**SCHEDULE Y – INFORMATION CONCERNING ACTIVITIES OF INSURER MEMBERS OF A HOLDING COMPANY GROUP**

PART 1 – ORGANIZATIONAL CHART

---

**NONE**

## SUPPLEMENTAL EXHIBITS AND SCHEDULES INTERROGATORIES

The following supplemental reports are required to be filed as part of your statement filing. However, in the event that your company does not transact the type of business for which the special report must be filed, your response of NO to the specific interrogatory will be accepted in lieu of filing a "NONE" report and a bar code will be printed below. If the supplement is required of your company but is not being filed for whatever reason, enter SEE EXPLANATION and provide an explanation following the interrogatory questions.

**Response**

1. Will the Medicare Part D Coverage Supplement be filed with the state of domicile and the NAIC with this statement?

NO

**Explanation:**

1.

**Bar Code:**



**Overflow Page for Write-Ins**

**NONE**

### SCHEDULE A - VERIFICATION

#### Real Estate

	1 Year to Date	2 Prior Year Ended December 31
1. Book/adjusted carrying value, December 31 of prior year.....	0	
2. Cost of acquired:		
2.1 Actual cost at time of acquisition.....		
2.2 Additional investment made after acquisition.....		
3. Current year change in encumbrances.....		
4. Total gain (loss) on disposals.....		
5. Deduct amounts received on disposals.....		
6. Total foreign exchange change in book/adjusted carrying value.....		
7. Deduct current year's other than temporary impairment recognized.....		
8. Deduct current year's depreciation.....		
9. Book/adjusted carrying value at end of current period (Lines 1+2+3+4-5+6-7-8).....	0	0
10. Deduct total nonadmitted amounts.....		
11. Statement value at end of current period (Line 9 minus Line 10).....	0	0

### SCHEDULE B - VERIFICATION

#### Mortgage Loans

	1 Year to Date	2 Prior Year Ended December 31
1. Book value/recorded investment excluding accrued interest, December 31 of prior year.....	0	
2. Cost of acquired:		
2.1 Actual cost at time of acquisition.....		
2.2 Additional investment made after acquisition.....		
3. Capitalized deferred interest and other.....		
4. Accrual of discount.....		
5. Unrealized valuation increase (decrease).....		
6. Total gain (loss) on disposals.....		
7. Deduct amounts received on disposals.....		
8. Deduct amortization of premium and mortgage interest points and commitment fees.....		
9. Total foreign exchange change in book value/recorded investment excluding accrued interest.....		
10. Deduct current year's other than temporary impairment recognized.....		
11. Book value/recorded investment excluding accrued interest at end of current period (Lines 1+2+3+4+5+6-7-8+9-10).....	0	0
12. Total valuation allowance.....		
13. Subtotal (Line 11 plus Line 12).....	0	0
14. Deduct total nonadmitted amounts.....		
15. Statement value at end of current period (Line 13 minus Line 14).....	0	0

### SCHEDULE BA - VERIFICATION

#### Other Long-Term Invested Assets

	1 Year to Date	2 Prior Year Ended December 31
1. Book/adjusted carrying value, December 31 of prior year.....	0	
2. Cost of acquired:		
2.1 Actual cost at time of acquisition.....		
2.2 Additional investment made after acquisition.....		
3. Capitalized deferred interest and other.....		
4. Accrual of discount.....		
5. Unrealized valuation increase (decrease).....		
6. Total gain (loss) on disposals.....		
7. Deduct amounts received on disposals.....		
8. Deduct amortization of premium and depreciation.....		
9. Total foreign exchange change in book/adjusted carrying value.....		
10. Deduct current year's other than temporary impairment recognized.....		
11. Book/adjusted carrying value at end of current period (Lines 1+2+3+4+5+6-7-8+9-10).....	0	0
12. Deduct total nonadmitted amounts.....		
13. Statement value at end of current period (Line 11 minus Line 12).....	0	0

### SCHEDULE D - VERIFICATION

#### Bonds and Stocks

	1 Year to Date	2 Prior Year Ended December 31
1. Book/adjusted carrying value of bonds and stocks, December 31 of prior year.....	0	
2. Cost of bonds and stocks acquired.....	109,717	
3. Accrual of discount.....	32	
4. Unrealized valuation increase (decrease).....		
5. Total gain (loss) on disposals.....		
6. Deduct consideration for bonds and stocks disposed of.....		
7. Deduct amortization of premium.....		
8. Total foreign exchange change in book/adjusted carrying value.....		
9. Deduct current year's other than temporary impairment recognized.....		
10. Book/adjusted carrying value at end of current period (Lines 1+2+3+4+5-6-7+8-9).....	109,749	0
11. Deduct total nonadmitted amounts.....		
12. Statement value at end of current period (Line 10 minus Line 11).....	109,749	0

### SCHEDULE D - PART 1B

Showing the Acquisitions, Dispositions and Non-Trading Activity  
During the Current Quarter for all Bonds and Preferred Stock by Rating Class

	1 Book/Adjusted Carrying Value Beginning of Current Quarter	2 Acquisitions During Current Quarter	3 Dispositions During Current Quarter	4 Non-Trading Activity During Current Quarter	5 Book/Adjusted Carrying Value End of First Quarter	6 Book/Adjusted Carrying Value End of Second Quarter	7 Book/Adjusted Carrying Value End of Third Quarter	8 Book/Adjusted Carrying Value December 31 Prior Year
<b>BONDS</b>								
1. Class 1 (a).....		7,272,176	5,751,401	32		1,520,807		
2. Class 2 (a).....								
3. Class 3 (a).....								
4. Class 4 (a).....								
5. Class 5 (a).....								
6. Class 6 (a).....								
7. Total Bonds.....	0	7,272,176	5,751,401	32	0	1,520,807	0	0
<b>PREFERRED STOCK</b>								
8. Class 1.....								
9. Class 2.....								
10. Class 3.....								
11. Class 4.....								
12. Class 5.....								
13. Class 6.....								
14. Total Preferred Stock.....	0	0	0	0	0	0	0	0
15. Total Bonds and Preferred Stock.....	0	7,272,176	5,751,401	32	0	1,520,807	0	0

QS102

(a) Book/Adjusted Carrying Value column for the end of the current reporting period includes the following amount of non-rated short-term and cash equivalent bonds by NAIC designation:  
NAIC 1 \$.....0; NAIC 2 \$.....0; NAIC 3 \$.....0; NAIC 4 \$.....0; NAIC 5 \$.....0; NAIC 6 \$.....0.

## SCHEDULE DA - PART 1

### Short-Term Investments

	1 Book/Adjusted Carrying Value	2 Par Value	3 Actual Cost	4 Interest Collected Year To Date	5 Paid for Accrued Interest Year To Date
9199999. Totals.....	1,411,058	XXX	1,411,058		

## SCHEDULE DA - VERIFICATION

### Short-Term Investments

	1 Year to Date	2 Prior Year Ended December 31
1. Book/adjusted carrying value, December 31 of prior year.....	0	
2. Cost of short-term investments acquired.....	7,162,459	
3. Accrual of discount.....		
4. Unrealized valuation increase (decrease).....		
5. Total gain (loss) on disposals.....		
6. Deduct consideration received on disposals.....	5,751,401	
7. Deduct amortization of premium.....		
8. Total foreign exchange change in book/adjusted carrying value.....		
9. Deduct current year's other than temporary impairment recognized.....		
10. Book/adjusted carrying value at end of current period (Lines 1+2+3+4+5-6-7+8-9).....	1,411,058	0
11. Deduct total nonadmitted amounts.....		
12. Statement value at end of current period (Line 10 minus Line 11).....	1,411,058	0

## SCHEDULE DB - PART F - SECTION 1

### Replicated (Synthetic) Assets Open

Replicated (Synthetic) Asset					Components of the Replicated (Synthetic) Asset						
1 Replication RSAT Number	2 Description	3 NAIC Designation or Other Description	4 Statement Value	5 Fair Value	Derivative Instruments Open		Cash Instrument(s) Held				
					6 Description	7 Fair Value	8 CUSIP	9 Description	10 Statement Value	11 Fair Value	12 NAIC Designation or Other Description
<b>NONE</b>											

## SCHEDULE DB - PART F - SECTION 2

### Reconciliation of Replicated (Synthetic) Assets Open

	First Quarter		Second Quarter		Third Quarter		Fourth Quarter		Year-To-Date	
	1 Number of Positions	2 Total Replicated (Synthetic) Assets Statement Value	3 Number of Positions	4 Total Replicated (Synthetic) Assets Statement Value	5 Number of Positions	6 Total Replicated (Synthetic) Assets Statement Value	7 Number of Positions	8 Total Replicated (Synthetic) Assets Statement Value	9 Number of Positions	10 Total Replicated (Synthetic) Assets Statement Value
1. Beginning Inventory.....			0	0	0	0	0	0	0	0
2. Add: Opened or Acquired Transactions.....									0	0
3. Add: Increases in Replicated Asset Statement Value.....	XXX		XXX		XXX		XXX		XXX	0
4. Less: Closed or Disposed of Transactions.....									0	0
5. Less: Positions Disposed of for Failing Effectiveness Criteria.....									0	0
6. Less: Decreases in Replicated (Synthetic) Asset Statement Value.....	XXX		XXX	<b>NONE</b>	XXX		XXX		XXX	0
7. Ending inventory.....	0	0	0	0	0	0	0	0	0	0

## SCHEDULE E- VERIFICATION

### Cash Equivalents

	1 Year to Date	2 Prior Year Ended December 31
1. Book/adjusted carrying value, December 31 of prior year.....	0	
2. Cost of cash equivalents acquired.....		
3. Accrual of discount.....		
4. Unrealized valuation increase (decrease).....		
5. Total gain (loss) on disposals.....		
6. Deduct consideration received on disposals.....		
7. Deduct amortization of premium.....		
8. Total foreign exchange change in book/ adjusted carrying value.....		
9. Deduct current year's other than temporary impairment recognized.....		
10. Book/adjusted carrying value at end of current period (Lines 1+2+3+4+5-6-7-8-9).....	0	0
11. Deduct total nonadmitted amounts.....		
12. Statement value at end of current period (Line 10 minus Line 11).....	0	0

NONE

### SCHEDULE A - PART 2

Showing all Real Estate ACQUIRED and Additions Made During the Current Quarter

1 Description of Property	Location		4 Date Acquired	5 Name of Vendor	6 Actual Cost at Time of Acquisition	7 Amount of Encumbrances	8 Book/Adjusted Carrying Value Less Encumbrances	9 Additional Investment Made After Acquisition
	2 City	3 State						

**NONE**

QE01

### SCHEDULE A - PART 3

Showing all Real Estate DISPOSED During the Quarter, Including Payments During the Final Year on "Sales Under Contract "

1 Description of Property	Location		4 Disposal Date	5 Name of Purchaser	6 Actual Cost	7 Expended for Additions, Permanent Improvements and Changes in Encumbrances	8 Book/Adjusted Carrying Value Less Encumbrances Prior Year	Change in Book/Adjusted Carrying Value Less Encumbrances					14 Book/Adjusted Carrying Value Less Encumbrances on Disposal	15 Amounts Received During Year	16 Foreign Exchange Gain (Loss) on Disposal	17 Realized Gain (Loss) on Disposal	18 Total Gain (Loss) on Disposal	19 Gross Income Earned Less Interest Incurred on Encumbrances	20 Taxes, Repairs, and Expenses Incurred
	2 City	3 State						9 Current Year's Depreciation	10 Current Year's Other Than Temporary Impairment Recognized	11 Current Year's Change in Encumbrances	12 Total Change in B./A.C.V. (11 - 9 - 10)	13 Total Foreign Exchange Change in B./A.C.V.							

**NONE**

### SCHEDULE B - PART 2

Showing all Mortgage Loans ACQUIRED During the Current Quarter

1 Loan Number	Location		4 Loan Type	5 Date Acquired	6 Rate of Interest	7 Actual Cost at Time of Acquisition	8 Additional Investment Made After Acquisition	9 Value of Land and Buildings
	2 City	3 State						

**NONE**

QE02

### SCHEDULE B - PART 3

Showing all Mortgage Loans DISPOSED, Transferred or Repaid During the Current Quarter

1 Loan Number	Location		4 Loan Type	5 Date Acquired	6 Disposal Date	7 Book Value/Recorded Investment Excluding Accrued Interest Prior Year	Change in Book Value/Recorded Investment						14 Book Value/Recorded Investment Excluding Accrued Interest on Disposal	15 Consideration	16 Foreign Exchange Gain (Loss) on Disposal	17 Realized Gain (Loss) on Disposal	18 Total Gain (Loss) on Disposal
	2 City	3 State					8 Unrealized Valuation Increase (Decrease)	9 Current Year's (Amortization)/Accretion	10 Current Year's Other Than Temporary Impairment Recognized	11 Capitalized Deferred Interest and Other	12 Total Change in Book Value (8+9-10+11)	13 Total Foreign Exchange Change in Book Value					

**NONE**

### SCHEDULE BA - PART 2

Showing Other Long-Term Invested Assets ACQUIRED During the Current Quarter

1 CUSIP Identification	2 Name or Description	Location		5 Name of Vendor or General Partner	6 NAIC Desig- nation	7 Date Originally Acquired	8 Type and Strategy	9 Actual Cost at Time of Acquisition	10 Additional Investment Made After Acquisition	11 Amount of Encumbrances	12 Commitment for Additional Investment	13 Percentage of Ownership
		3 City	4 State									

**NONE**

QE03

### SCHEDULE BA - PART 3

Showing Other Long-Term Invested Assets DISPOSED, Transferred or Repaid During the Current Quarter

1 CUSIP Identification	2 Name or Description	Location		5 Name of Purchaser or Nature of Disposal	6 Date Originally Acquired	7 Disposal Date	8 Book/Adjusted Carrying Value Less Encumbrances, Prior Year	Changes in Book/Adjusted Carrying Value						15 Book/Adjusted Carrying Value Less Encumbrances on Disposal	16 Consideration	17 Foreign Exchange Gain (Loss) on Disposal	18 Realized Gain (Loss) on Disposal	19 Total Gain (Loss) on Disposal	20 Investment Income
		3 City	4 State					9 Unrealized Valuation Increase (Decrease)	10 Current Year's (Depreciation) or (Amortization)/ Accretion	11 Current Year's Other Than Temporary Impairment Recognized	12 Capitalized Deferred Interest and Other	13 Total Change in B./A.C.V (9+10-11+12)	14 Total Foreign Exchange Change in B./A.C.V.						

**NONE**

### SCHEDULE D - PART 3

Show all Long-Term Bonds and Stock Acquired During the Current Quarter

1 CUSIP Identification	2 Description	3 Foreign	4 Date Acquired	5 Name of Vendor	6 Number of Shares of Stock	7 Actual Cost	8 Par Value	9 Paid for Accrued Interest and Dividends	10 NAIC Designation or Market Indicator (a)
<b>Bonds - U.S. Government</b>									
912828 KA 7	US Treasury Bonds.....		.....03/06/2009.....	GOLDMAN SACHS.....		.....109,717	.....110,000	.....286	1F.....
0399999.	Total - Bonds - U.S. Government.....					.....109,717	.....110,000	.....286	.....XXX.....
8399997.	Total - Bonds - Part 3.....					.....109,717	.....110,000	.....286	.....XXX.....
8399999.	Total - Bonds.....					.....109,717	.....110,000	.....286	.....XXX.....
9999999.	Total - Bonds, Preferred and Common Stocks.....					.....109,717	.....XXX.....	.....286	.....XXX.....

(a) For all common stock bearing the NAIC market indicator "U" provide: the number of such issues:.....0.

### SCHEDULE D - PART 4

Show All Long-Term Bonds and Stock Sold, Redeemed or Otherwise Disposed of During the Current Quarter

1 CUSIP Identification	2 Description	3 F o r e i g n Disposal Date	4 Disposal Date	5 Name of Purchaser	6 Number of Shares of Stock	7 Consideration	8 Par Value	9 Actual Cost	10 Prior Year Book/ Adjusted Carrying Value	Change in Book/Adjusted Carrying Value					16 Book/ Adjusted Carrying Value At Disposal Date	17 Foreign Exchange Gain (Loss) on Disposal	18 Realized Gain (Loss) on Disposal	19 Total Gain (Loss) on Disposal	20 Bond Interest/ Stock Dividends Received During Year	21 Maturity Date	22 NAIC Desig- nation or Market Indicator (a)
										11 Unrealized Valuation Increase/ (Decrease)	12 Current Year's (Amortization)/ Accretion	13 Current Year's Other Than Temporary Impairment Recognized	14 Total Change in B./A.C.V. (11+12-13)	15 Total Foreign Exchange Change in B./A.C.V.							
NONE																					

(a) For all common stock bearing the NAIC market indicator "U" provide: the number of such issues:.....0.

QE05

**SCHEDULE DB - PART A - SECTION 1**

Showing All Options, Caps, Floors and Insurance Futures Options Owned at Current Statement Date

1	2	3	4	5	6	7	8	9	10	11	12	13	14
Description	Number of Contracts or Notional Amount	Date of Maturity, Expiry, or Settlement	Strike Price, Rate or Index	Date of Acquisition	Exchange or Counterparty	Cost/ Option Premium	Book Value	*	Statement Value	Fair Value	Year to Date Increase/ (Decrease) by Adjustment	Used to Adjust Basis of Hedged Item	Other Investment/ Miscellaneous Income

**NONE**

QE06

**SCHEDULE DB - PART B - SECTION 1**

Showing All Options, Caps, Floors and Insurance Futures Options Written and In-Force at Current Statement Date

1	2	3	4	5	6	7	8	9	10	11	12	13	14
Description	Number of Contracts or Notional Amount	Date of Maturity, Expiry, or Settlement	Strike Price, Rate or Index	Date of Issuance/ Purchase	Exchange or Counterparty	Consideration Received	Book Value	*	Statement Value	Fair Value	Year to Date Increase/ (Decrease) by Adjustment	Used to Adjust Basis	Other Investment/ Miscellaneous Income

**NONE**

**SCHEDULE DB - PART C - SECTION 1**

Showing All Collar, Swap and Forwards Open at Current Statement Date

1	2	3	4	5	6	7	8	9	10	11	12	13	14	15
Description	Notional Amount	Date of Maturity, Expiry, or Settlement	Strike Price, Rate or Index Rec (Pay)	Date of Opening Position or Agreement	Exchange or Counterparty	Cost or (Consideration Received)	Book Value	*	Statement Value	Fair Value	Year to Date Increase/ (Decrease) by Adjustment	Used to Adjust Basis of Hedged Item	Other Investment/ Miscellaneous Income	Potential Exposure

**NONE**

QE07

**SCHEDULE DB - PART D - SECTION 1**

Showing All Futures Contracts and Insurance Futures Contracts at Current Statement Date

1	2	3	4	5	6	7	8	9	Variation Margin Information			13
									10	11	12	
Description	Number of Contracts	Maturity Date	Original Value	Current Value	Variation Margin	Date of Opening Position	Exchange or Counterparty	Cash Deposit	Recognized	Used to Adjust Basis of Hedged Item	Deferred	Potential Exposure

**NONE**

## SCHEDULE E - PART 1 - CASH

### Month End Depository Balances

1 Depository	2 Code	3 Rate of Interest	4 Amount of Interest Received During Current Quarter	5 Amount of Interest Accrued at Current Statement Date	Book Balance at End of Each Month During Current Quarter			9 *
					6 First Month	7 Second Month	8 Third Month	
<div style="font-size: 48px; font-weight: bold; margin: 0;">NONE</div>								

### SCHEDULE E - PART 2 - CASH EQUIVALENTS

Show Investments Owned End of Current Quarter

1 Description	2 Code	3 Date Acquired	4 Rate of Interest	5 Maturity Date	6 Book/Adjusted Carrying Value	7 Amount of Interest Due & Accrued	8 Amount Received During Year
------------------	-----------	-----------------------	--------------------------	-----------------------	--------------------------------------	--	-------------------------------------

**NONE**

QE09