

**Canada**

**Legend**

- Eleven Turbine Layout
- Eleven Turbine Project Footprint
- Road
- Route 27
- State Boundary
- County Boundary
- Town Boundary

**North Arrow**

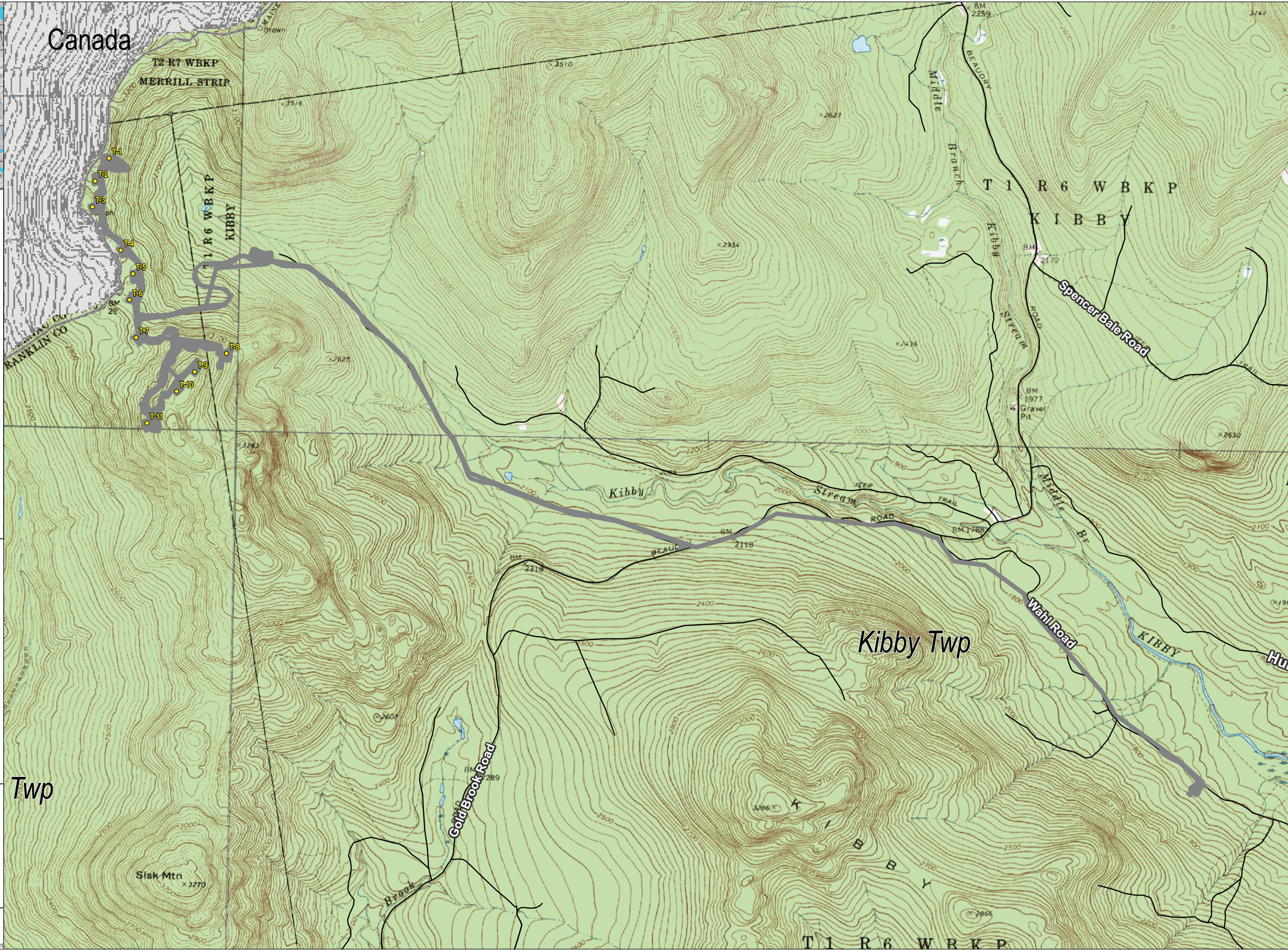
**Miles**

0 0.25 0.5

Sources: Maine OGIS, USGS, TRC

INFORMATION DEPICTED HEREON IS FOR REFERENCE PURPOSES ONLY AND IS COMPILED FROM BEST AVAILABLE SOURCES. TRC ASSUMES NO RESPONSIBILITY FOR ERRORS ARISING FROM MISUSE OF THIS MAP.

**Kibby Expansion  
Wind Power Project  
-  
Eleven Turbine Layout**



### Kibby Expansion Project Construction Schedule

ID	Task Name	Start	Finish	Duration	2011												2012																			
					Jul	Aug	Sep	Oct	Nov	Dec	Jan	Feb	Mar	Apr	May	Jun	Jul	Aug	Sep	Oct	Nov	Dec	Jan	Feb	Mar	Apr	May	Jun	Jul	Aug	Sep	Oct				
1	<b>Kibby Expansion Wind Power Project 11 Turbine Schedule</b>	<b>Wed 12/1/10</b>	<b>Fri 9/28/12</b>	<b>478 days</b>																																
2	LURC Approval	Wed 12/1/10	Wed 12/1/10	0 days																																
3	TC Board Approval	Wed 12/1/10	Wed 12/1/10	0 days																																
4	<b>Site Investigation / Clearing / Road Construction</b>	<b>Mon 8/1/11</b>	<b>Mon 6/25/12</b>	<b>236 days</b>																																
5	Site Mobilize	Mon 8/1/11	Fri 8/5/11	5 days																																
6	Clearing & Grubing	Wed 8/3/11	Tue 2/21/12	100 days																																
7	Geotechnical Investigation	Wed 8/17/11	Fri 5/4/12	58 days																																
8	Mile 5 Road Improvements	Thu 8/4/11	Wed 9/28/11	40 days																																
9	Access Road to Ridge	Wed 8/24/11	Tue 11/15/11	60 days																																
10	Crane Road Construction	Wed 9/7/11	Mon 6/25/12	150 days																																
11	Wahl Road Improvements	Thu 9/29/11	Wed 10/12/11	10 days																																
12	<b>Equipment Procurement</b>	<b>Fri 7/1/11</b>	<b>Fri 7/27/12</b>	<b>281 days</b>																																
13	Procure WTG's	Fri 7/1/11	Thu 10/6/11	70 days																																
14	Delivery of WTG's to Port	Fri 10/7/11	Thu 5/31/12	170 days																																
15	Procure Substation Transformer	Mon 8/1/11	Fri 8/12/11	10 days																																
16	Delivery of Substation Transformer	Mon 8/15/11	Fri 7/27/12	250 days																																
17	Purchase & Receive Collector Poles	Mon 9/12/11	Fri 12/30/11	80 days																																
18	<b>Collector Line (Substation to Ridge)</b>	<b>Mon 8/8/11</b>	<b>Fri 6/1/12</b>	<b>215 days</b>																																
19	ROW Clearing	Mon 8/8/11	Fri 11/25/11	80 days																																
20	Collector Line Installation	Mon 10/10/11	Fri 6/1/12	150 days																																
21	<b>Wind Farm Installation</b>	<b>Wed 9/14/11</b>	<b>Fri 9/28/12</b>	<b>273 days</b>																																
22	WTG Site Preparation	Wed 9/14/11	Thu 6/14/12	110 days																																
23	Foundation Installation	Wed 10/5/11	Wed 6/27/12	90 days																																
24	WTG Delivery to site	Fri 6/1/12	Thu 7/26/12	40 days																																
25	WTG Erection	Tue 6/5/12	Mon 7/30/12	40 days																																
26	Collector System Installation on Ridge	Tue 6/5/12	Mon 8/13/12	50 days																																
27	Substation Construction	Mon 5/7/12	Fri 7/27/12	60 days																																
28	Substation/115kV Tap Construction	Thu 5/10/12	Wed 7/18/12	50 days																																
29	Substation Commissioning	Mon 7/30/12	Fri 8/24/12	20 days																																
30	Collector System Energize	Mon 8/27/12	Fri 8/31/12	5 days																																
31	WTG Commissioning	Mon 9/3/12	Fri 9/28/12	20 days																																
32	11 turbine Substantial Completion	Fri 9/28/12	Fri 9/28/12	0 days																																

Project: Kibby Expansion Wind Power Date: Wed 8/11/10	Task	Progress	Summary	External Tasks	Deadline
	Split	Milestone	Project Summary	External Milestone	

Figure B.11