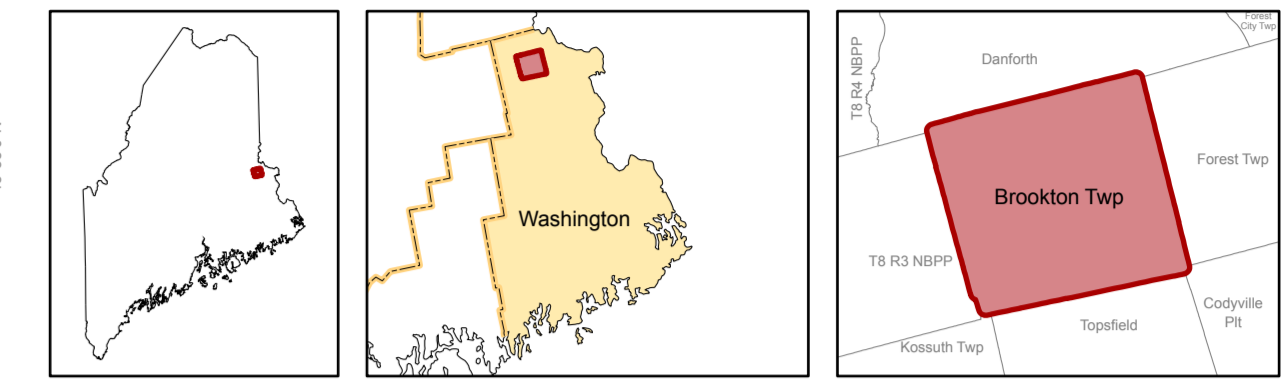


Brookton Twp.



T9 R3 NBPP
Washington County



Land Use Guidance Map

Department of Agriculture, Conservation and Forestry
Maine Land Use Planning Commission

Legend

DEVELOPMENT SUBDISTRICTS

- D-CI: Commercial Industrial
- D-GN: General
- D-RS: Residential

MANAGEMENT SUBDISTRICTS

- M-GN: General

PROTECTION SUBDISTRICTS

- P-FW: Fish and Wildlife
- P-GP: Great Pond
- P-SL1: Shoreland - 250'
- P-SL2: Shoreland - 75'
- P-WL1: Wetlands of Special Significance
- P-WL2: Scrub-shrub Wetlands
- P-WL3: Forested Wetlands

For complete descriptions of those areas included within the various subdistricts, and the associated regulations, refer to the Commission's Chapter 10 rules: Land Use Districts and Standards. Where any inconsistencies exist between the district boundaries, as shown on this map, and those described by the Commission's Land Use Districts and Standards, the latter shall govern.

For simplicity, this map does not show all the Wetland Protection Subdistricts for areas identified pursuant to Section 10.23.N,2 such as the beds of rivers, lakes, and other water bodies, and freshwater wetlands within 25 feet of stream channels. Nevertheless, these areas are within P-WL Subdistricts. In addition, this map does not show the Shoreland Protection Subdistricts along stream channels flowing through wetlands. Nevertheless, these areas are within P-SL2 Protection Subdistricts. If the locations of flowing waters or bodies of standing water existing on the ground differ from those shown on the map, then, pursuant to 12 M.R.S., Section 685-A(2)(G), P-GP, P-RR, P-SL, P-WL, and other subdistrict boundaries that are based upon the location of such waters shall, as appropriate, be deemed to follow the flowing water or body of standing water existing on the ground.

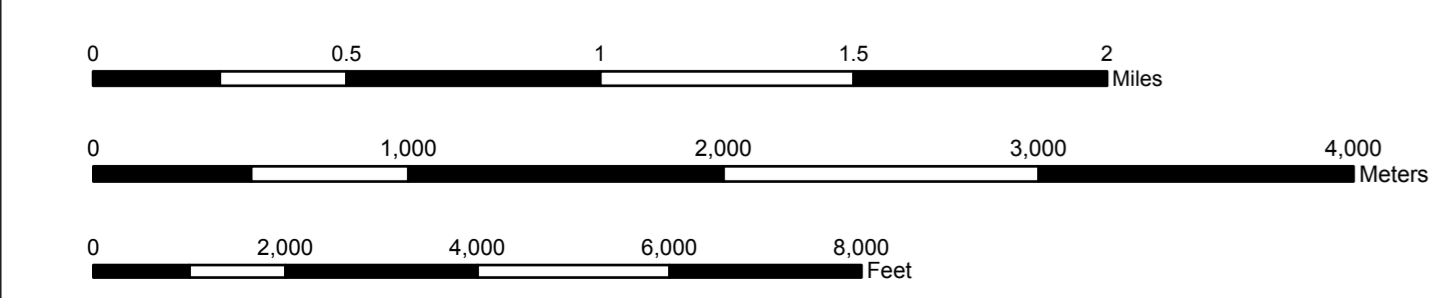
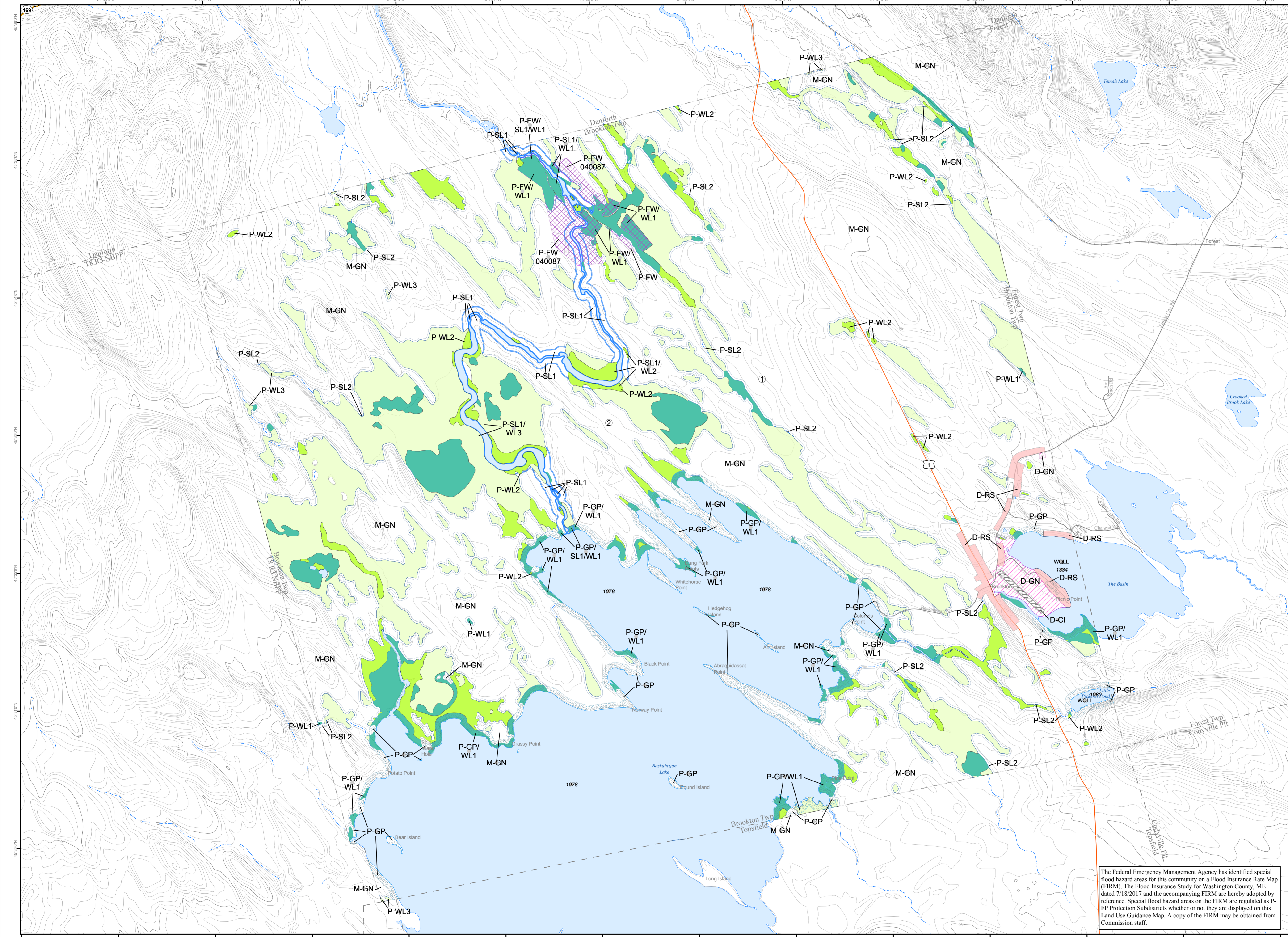
This Land Use Guidance Map was adopted by the Maine Land Use Planning Commission on 08/03/2005, and became effective on 08/18/2005.

This map is certified to be a true and correct copy of the Official Land Use Guidance Map of the Maine Land Use Planning Commission.

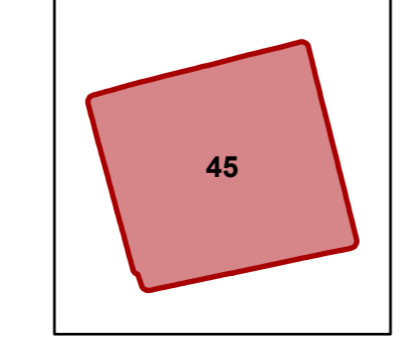
By: Caroline M. Carroll, Director, Maine Land Use Planning Commission.

Amendments			
Location #	Zoning Permit	Effective Date	Remarks
1	ZP766	08/18/2005	Adoption of digital NW1 wetlands
2	ZP796	05/25/2017 08/01/2024	Adoption of FEMA maps in Washington County Clerical correction to FEMA map adoption text

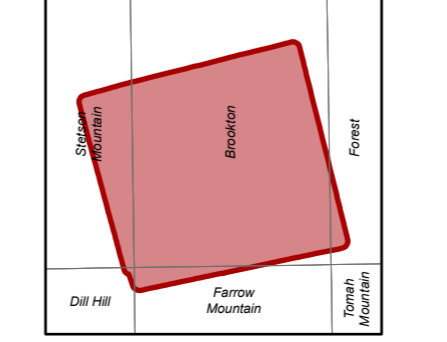
The Federal Emergency Management Agency has identified special flood hazard areas for this community on a Flood Insurance Rate Map (FIRM). The Flood Insurance Study for Washington County, ME dated 7/18/2017 and the accompanying FIRM are hereby adopted by reference. Special flood hazard areas on the FIRM are regulated as P-FP Protection Subdistricts whether or not they are displayed on this Land Use Guidance Map. A copy of the FIRM may be obtained from Commission staff.



DeLorme map locus



USGS 7.5' quad index



- Map amendment location
- Point at which a river drains 25 square miles - symbol points upstream (12 M.R.S. Sec. 682-B(4))
- 9999 MIDAS number: Unique number assigned to each standing body of water in Maine.
- WQLL Water Quality Limiting Lake - Refer to Section 10.23.E.3.g of the Commission's Land Use Districts and Standards.
- MC# Lake Management Classes - Refer to Section 10.02 (Definitions) of the Commission's Land Use Districts and Standards.