

# estimating bid document addendum 02



project: Cobscook Bay State Park - Shower Building & Utility Improvements  
Dennysville, Washington County, Maine BGS # 3473

pages: 01

date: 20 June 2024

*The Contract Documents govern all aspects of the project. Information conveyed during pre-bid meetings, telephone or via email with the Owner and/or Architect are informational only. Official instructions, clarifications and/or changes made to the Contract Documents during the bid phase are made only by addenda. The following clarifications, changes and additional instructions are hereby made as part of the Project Manual and Construction Drawings dated March 2024.*

items: **GENERAL**

1. **DOCUMENT BGS Advertisement: 001113 Notice to Contractors**

OMIT: June 27th bid date.

ADD: July 2nd bid date.

OMIT: Contract Final Completion Date on or before 3 April 2025.

ADD: Contract Final Completion Date on or before 3 June 2025.

## **ARCHITECTURAL**

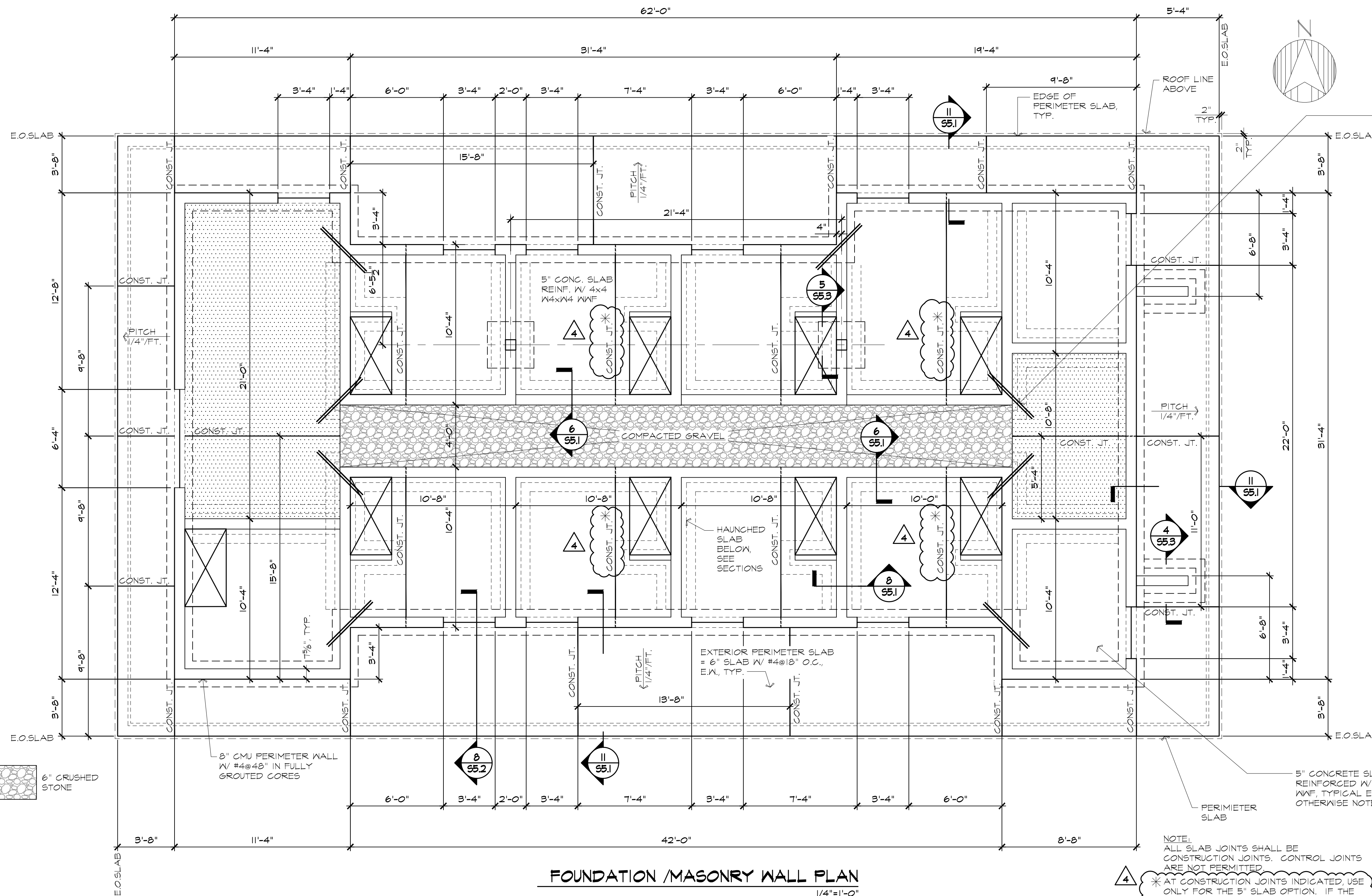
1. Pole Barns - Sheet 1.5 Floor Plan 5-Bay and Sheet 2.5 Exterior Elevations 5-Bay.

OMIT: Concrete landing pad, wood stairs, sliding barn doors, hinged man doors, and windows. Omitted openings to be framed consistent with standard wall framing, blocking and sheathing.

## **STRUCTURAL**

1. ADD: Revised S1.1 Foundation Plan dated 06.20.2024  
S5.1 Sections and Details dated 06.20.2024  
S5.4 Sections and Details dated 06.20.2024

attachments: Structural drawings as noted above.



PROVIDE (2)-#4 BARS x 4'-0" LONG CENTERED ON REENTRANT CORNERS AS INDICATED. LOCATE BARS 2" CLEAR FROM THE TOP OF SLAB AND 2" CLEAR FROM THE CORNER. ORIENT BARS AT A 45 DEGREE ANGLE FROM SLAB EDGES. SPACE BARS @ 2" ON CENTER.

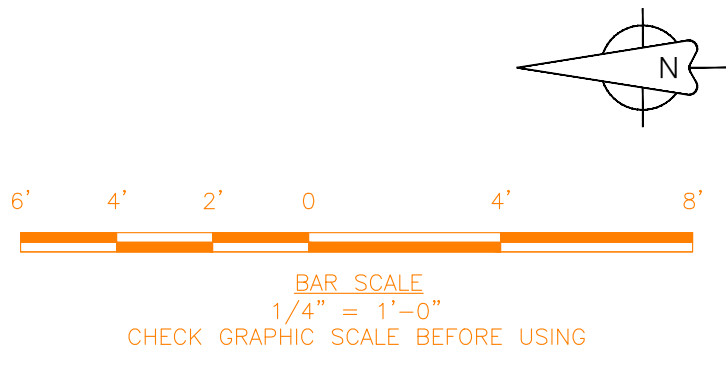
NOTE:  
ALL SLAB JOINTS SHALL BE CONSTRUCTION JOINTS. CONTROL JOINTS ARE NOT PERMITTED.  
\* AT CONSTRUCTION JOINTS INDICATED, USE ONLY FOR THE 5" SLAB OPTION. IF THE UNIFORM 12" SLAB OPTION IS USED (NOTE 4) DELETE THESE JOINTS.

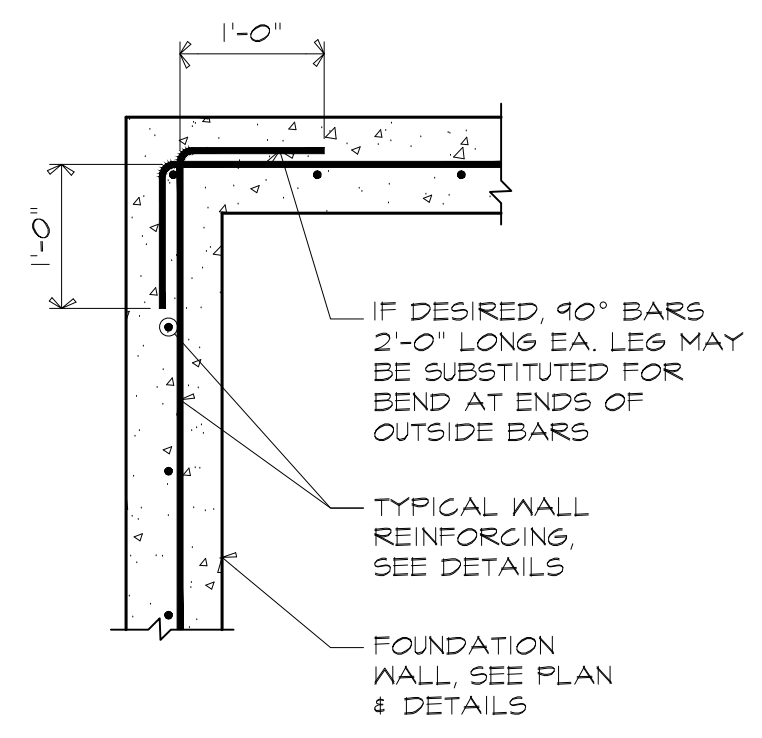
**FOUNDATION / MASONRY WALL PLAN**  
1/4"=1'-0"

- NOTE:**
- COORDINATE PLUMBING REQUIREMENTS WITH PLUMBING DRAWINGS.
  - SLOPE SHOWER FLOORS TO DRAIN - COORDINATE WITH ARCHITECTURAL DRAWINGS.
  - SHADING INDICATES FLOOR AREA NOT TO RECEIVE FLOOR SEALER. ALL OTHER INTERIOR SLAB SURFACES SHALL BE TREATED WITH FLOOR SEALER IN ACCORDANCE WITH SPECIFICATION SECTION 033000.
  - IT IS ACCEPTABLE TO FLAGE THE CONCRETE SLAB TO A UNIFORM THICKNESS OF 12".
    - REINFORCE W/ 2 LAYERS OF #4@15" EA. MAY. SEE DETAIL 4A/55.1
    - WHERE DIAGONAL BARS ARE INDICATED AT CORNERS, PROVIDE (4)-#4 x 4'-0" LONG - 2 @ TOP MAT & 2 @ BOTTOM MAT.

REV	DATE	DESCRIPTION
4	6-20-24	Revision
	1-26-23	Fire Marshal Review

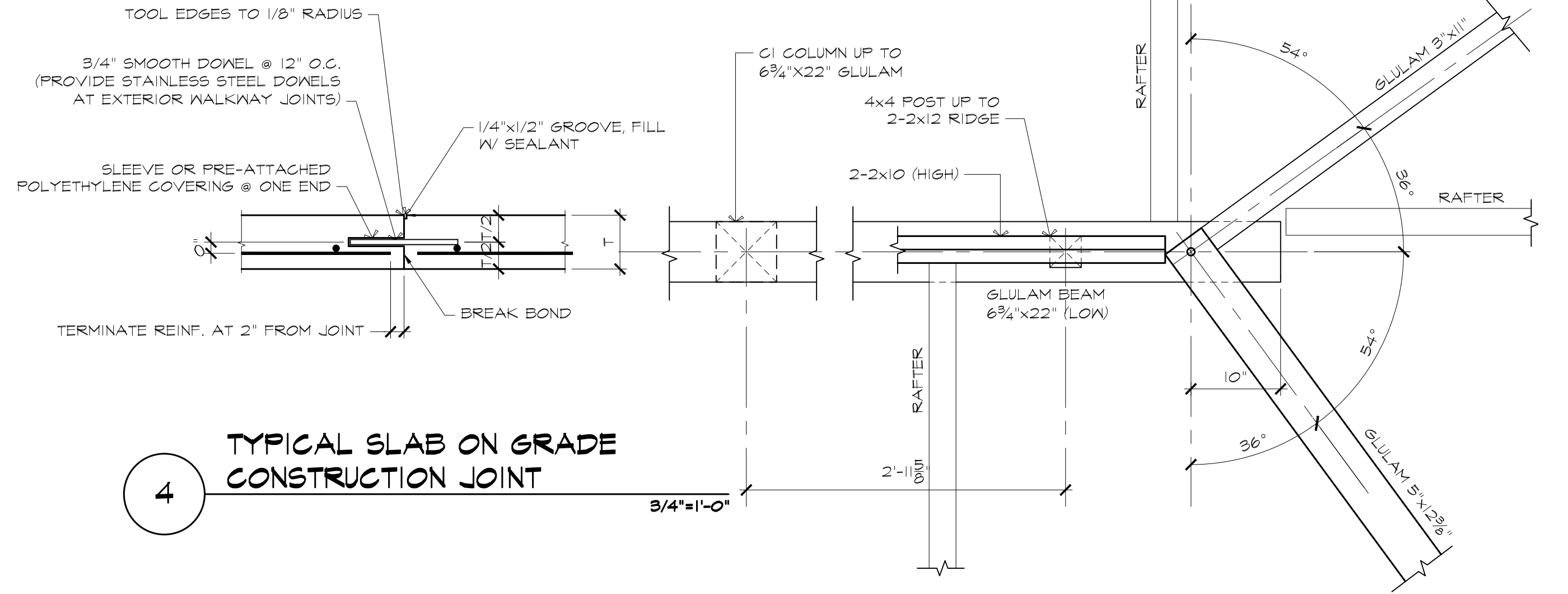
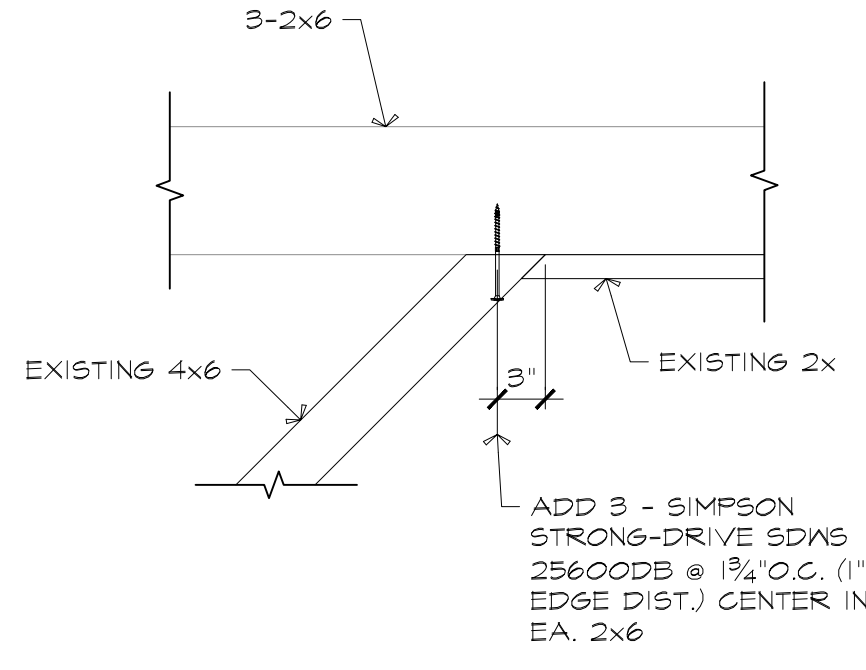
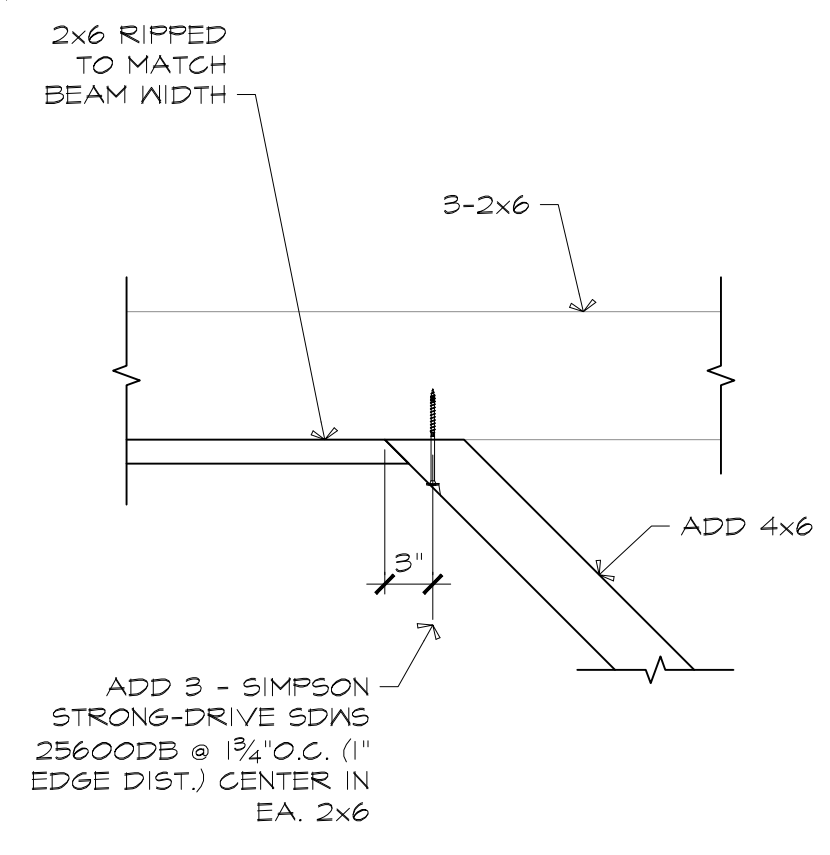
REVISIONS:





**CONCRETE REINFORCEMENT LAP SPLICE TABLE**

BAR SIZE	SPLICE LENGTH
#4	14"
#5	18"
#6	21"



**1 TYPICAL FOUNDATION WALL CORNER REINFORCEMENT**  
3/4"=1'-0"

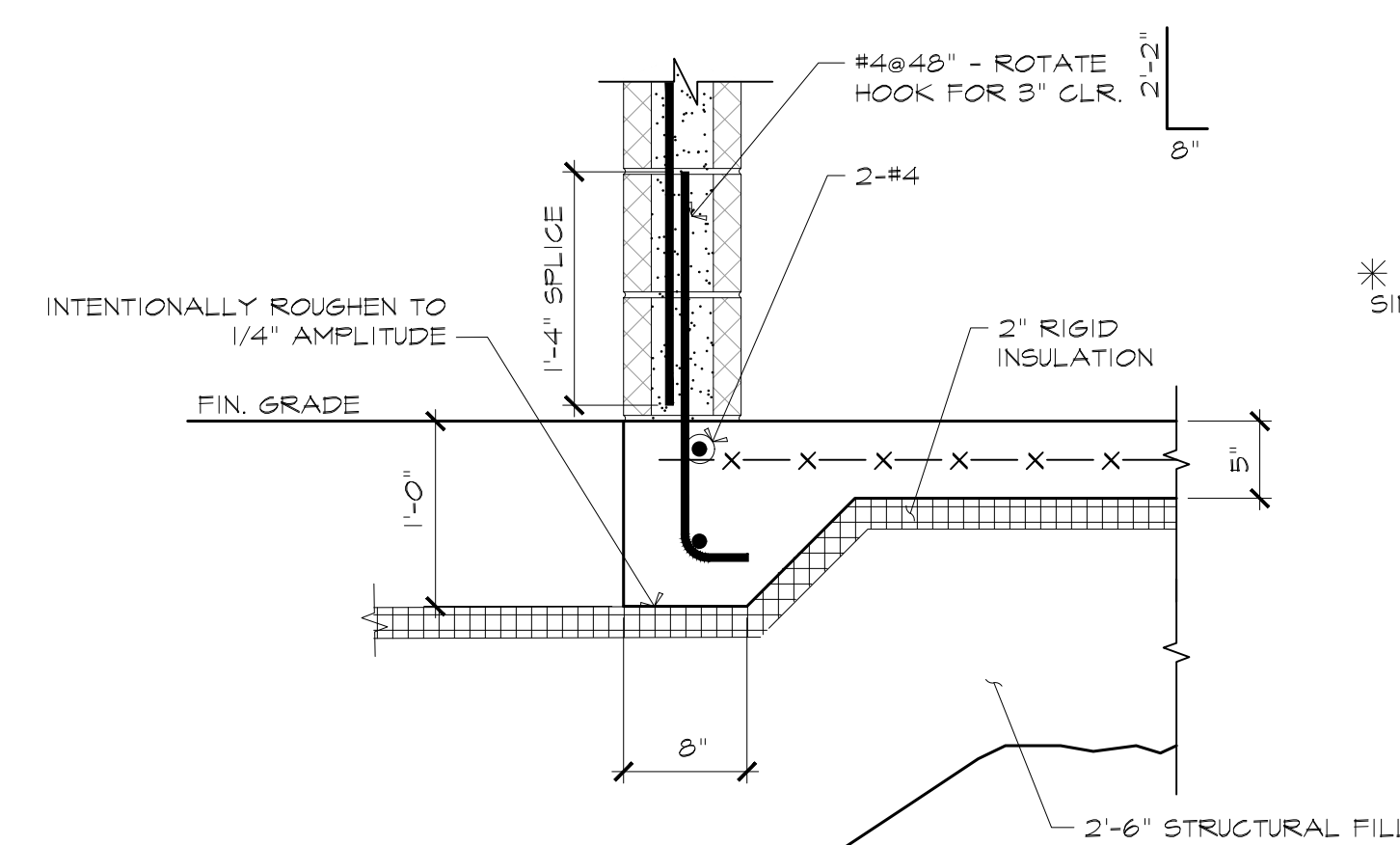
**2 LAP SPLICE TABLE**  
3/4"=1'-0"

**3A SECTION**  
1"=1'-0"

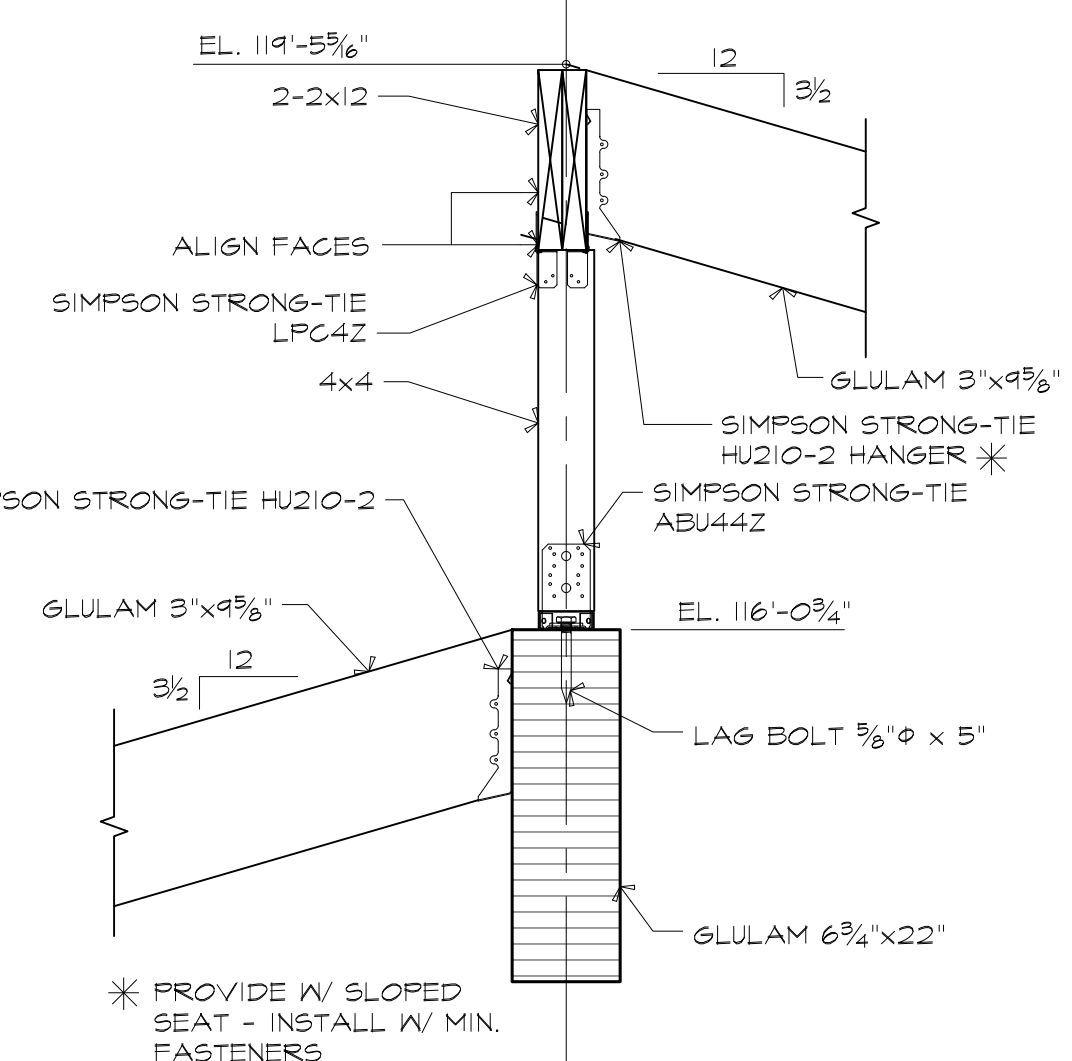
**3B SECTION**  
1"=1'-0"

**4 TYPICAL SLAB ON GRADE CONSTRUCTION JOINT**  
3/4"=1'-0"

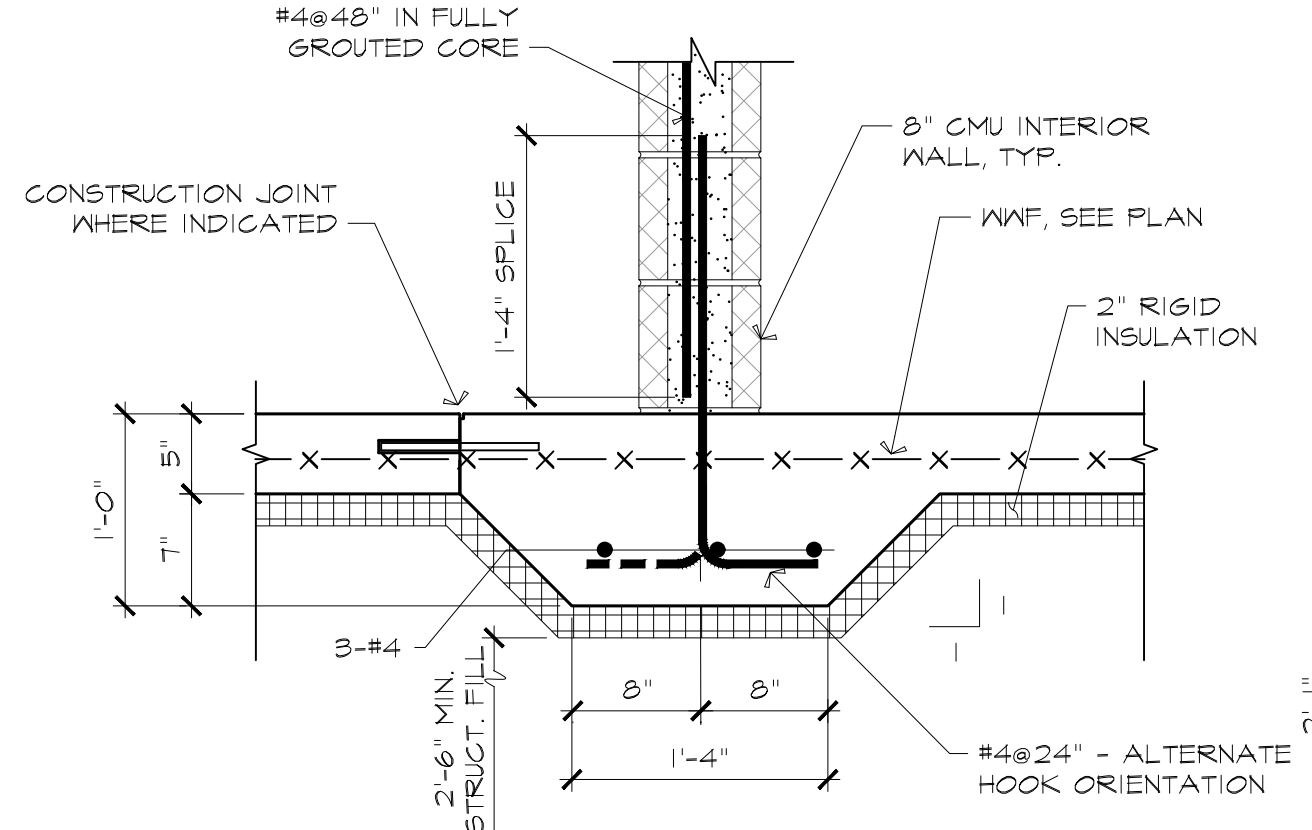
**5 PLAN DETAIL: HIP CONNECTION**  
1"=1'-0"



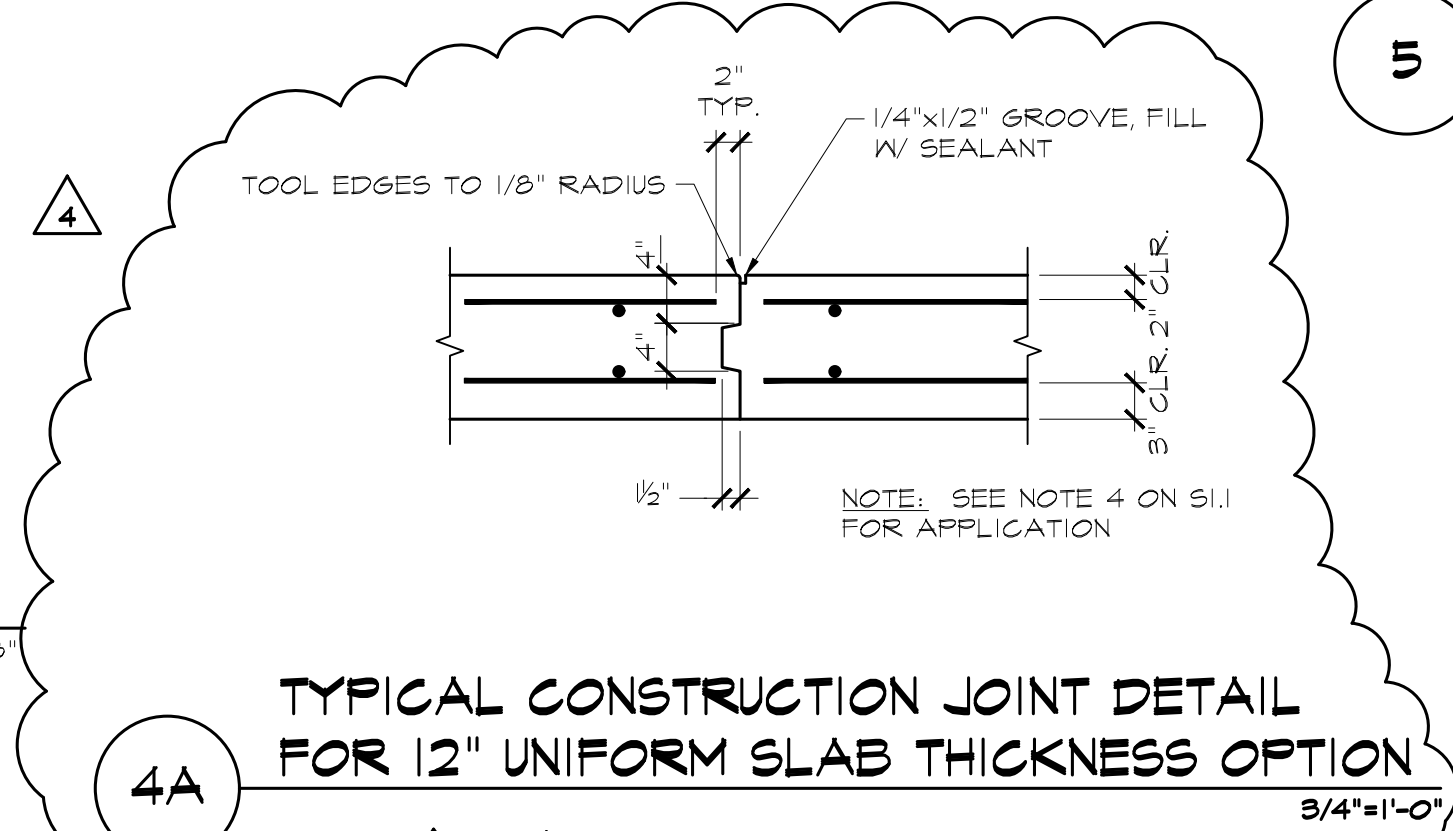
**6 SECTION THRU MECHANICAL CHASE**  
1"=1'-0"



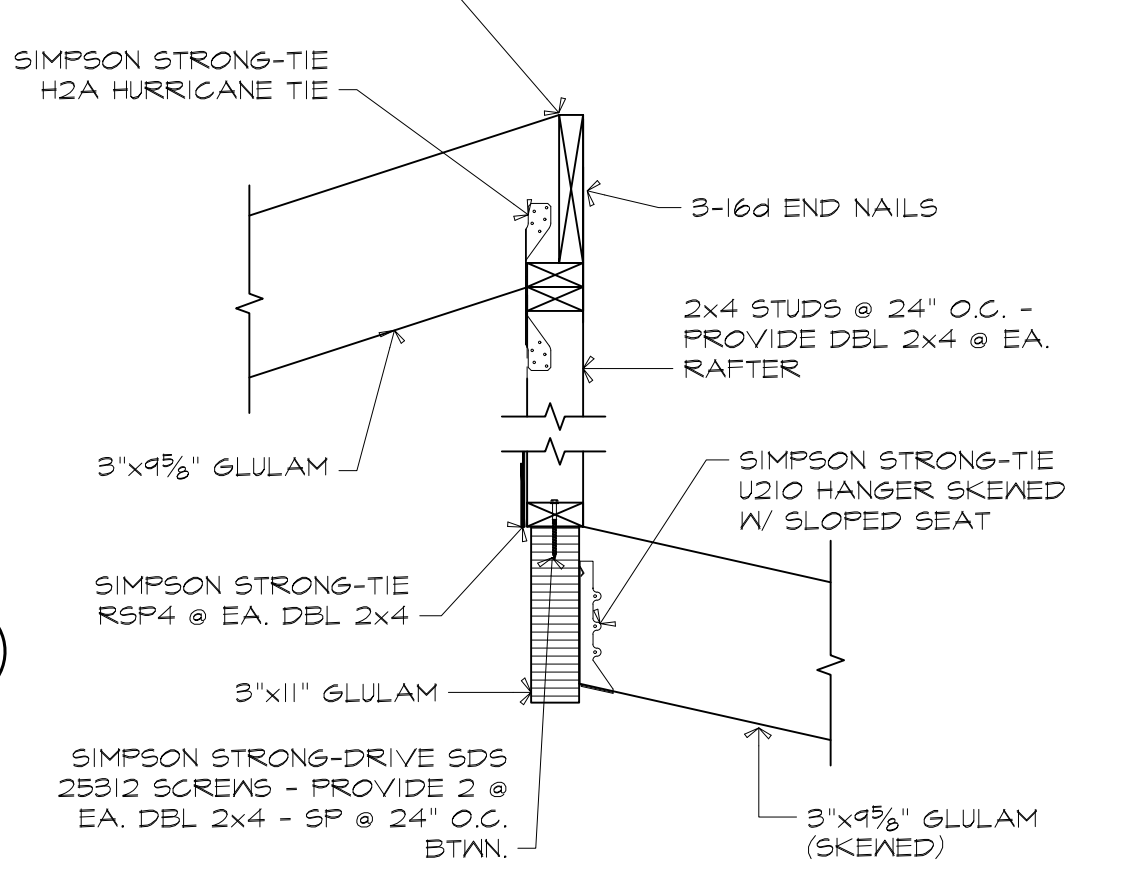
**7 SECTION**  
1"=1'-0"



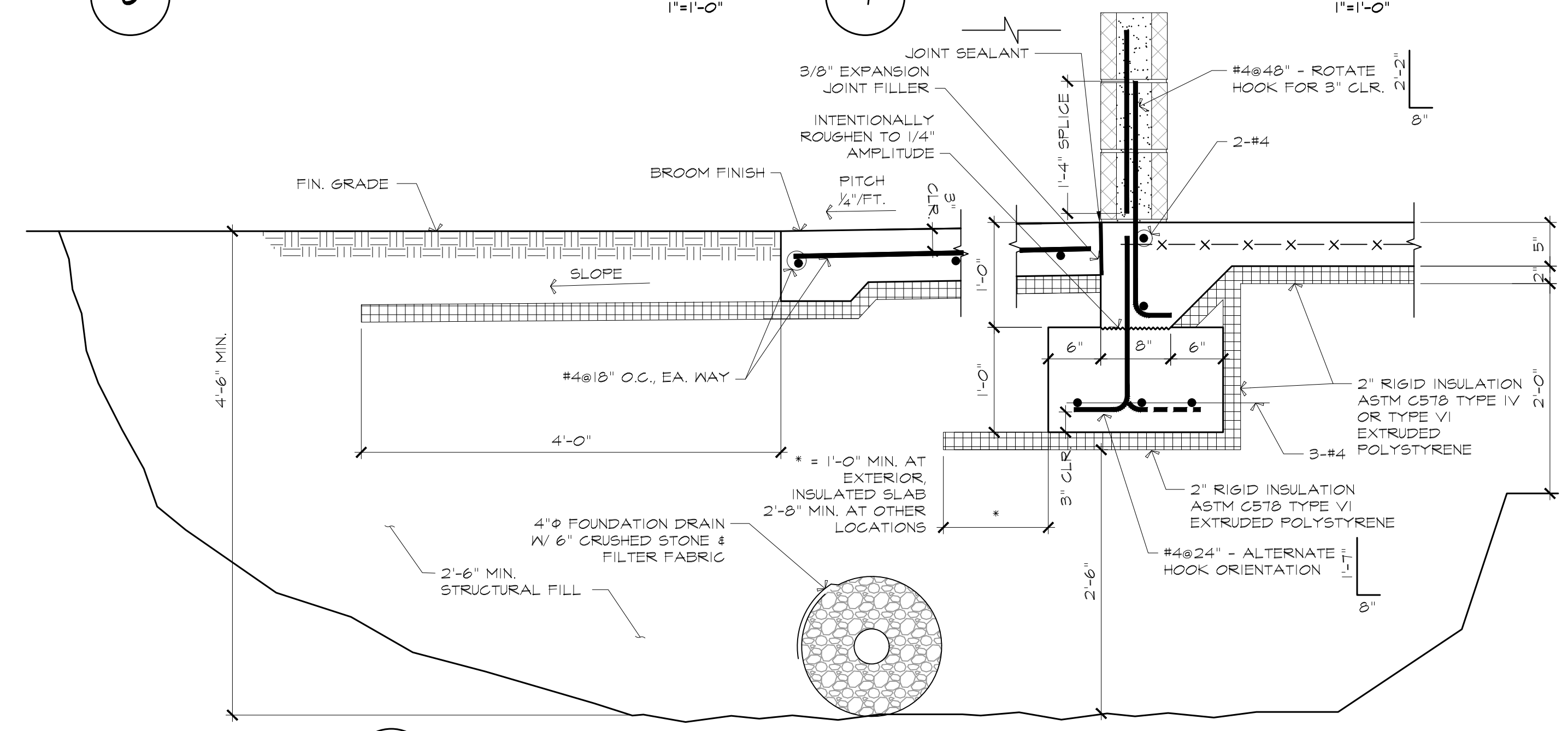
**8 TYPICAL FOUNDATION AT INTERIOR WALL**  
1"=1'-0"



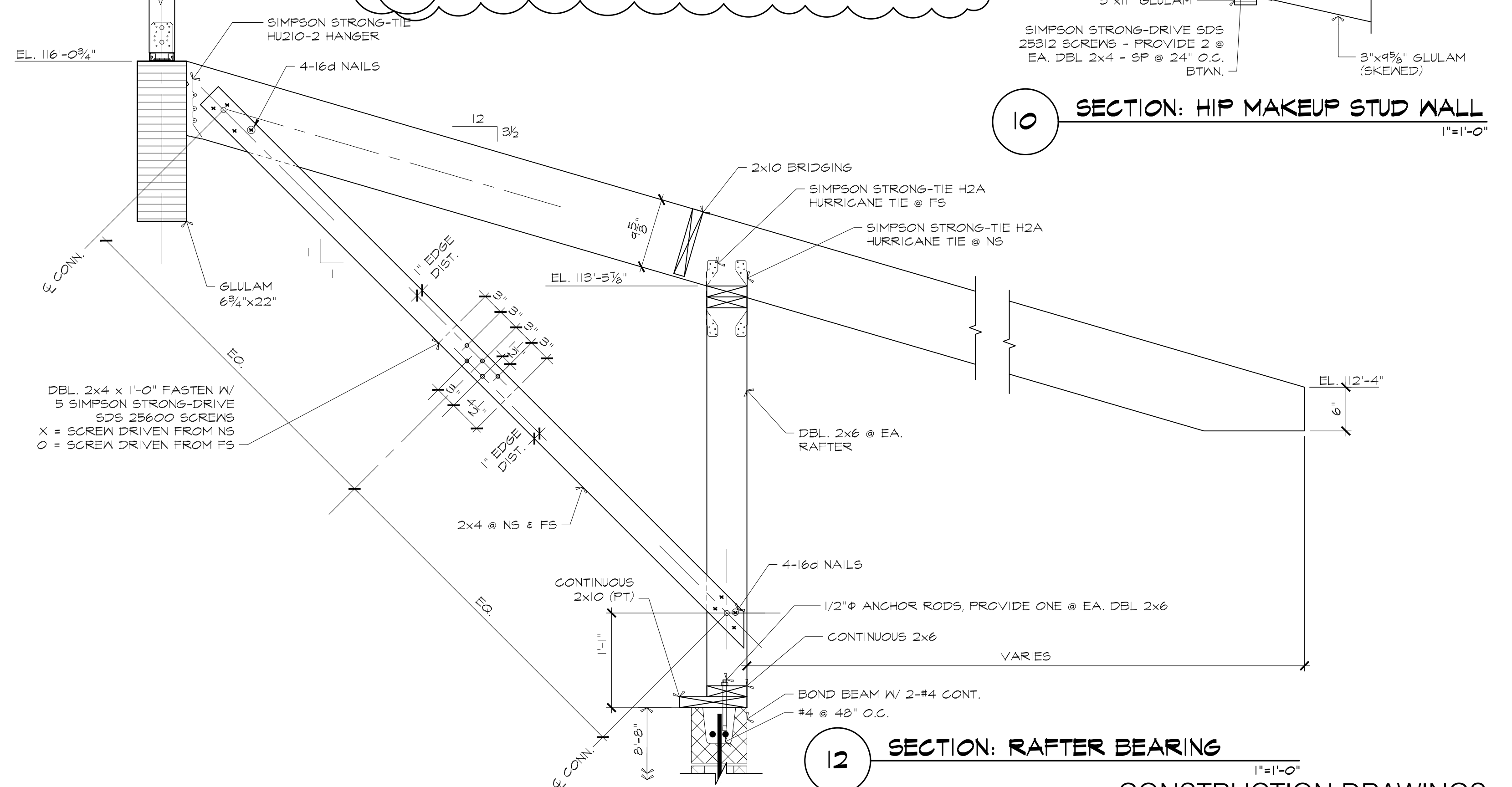
**4A TYPICAL CONSTRUCTION JOINT DETAIL FOR 12" UNIFORM SLAB THICKNESS OPTION**  
3/4"=1'-0"



**10 SECTION: HIP MAKEUP STUD WALL**  
1"=1'-0"

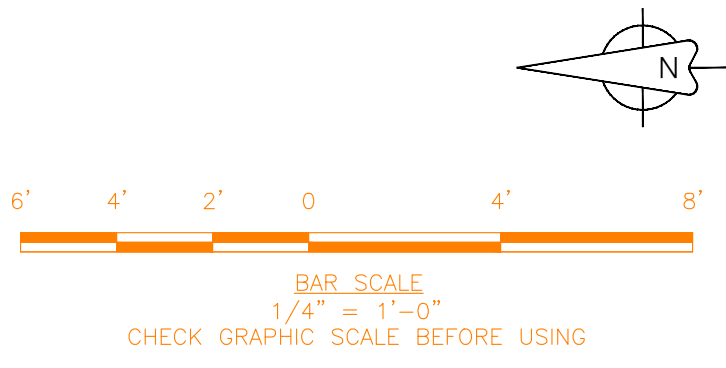


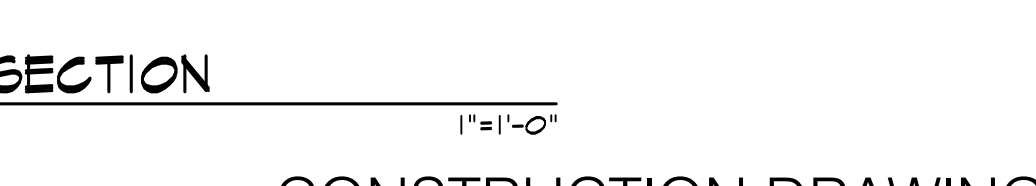
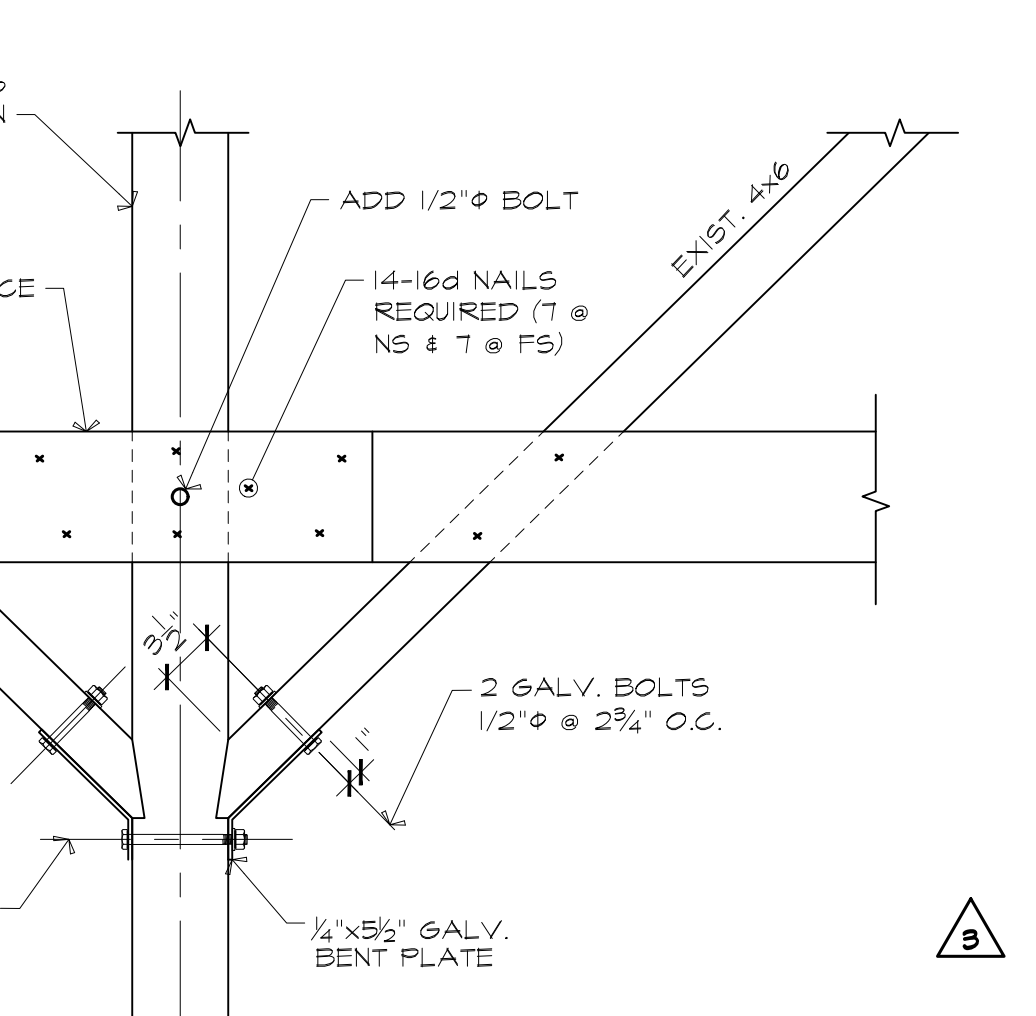
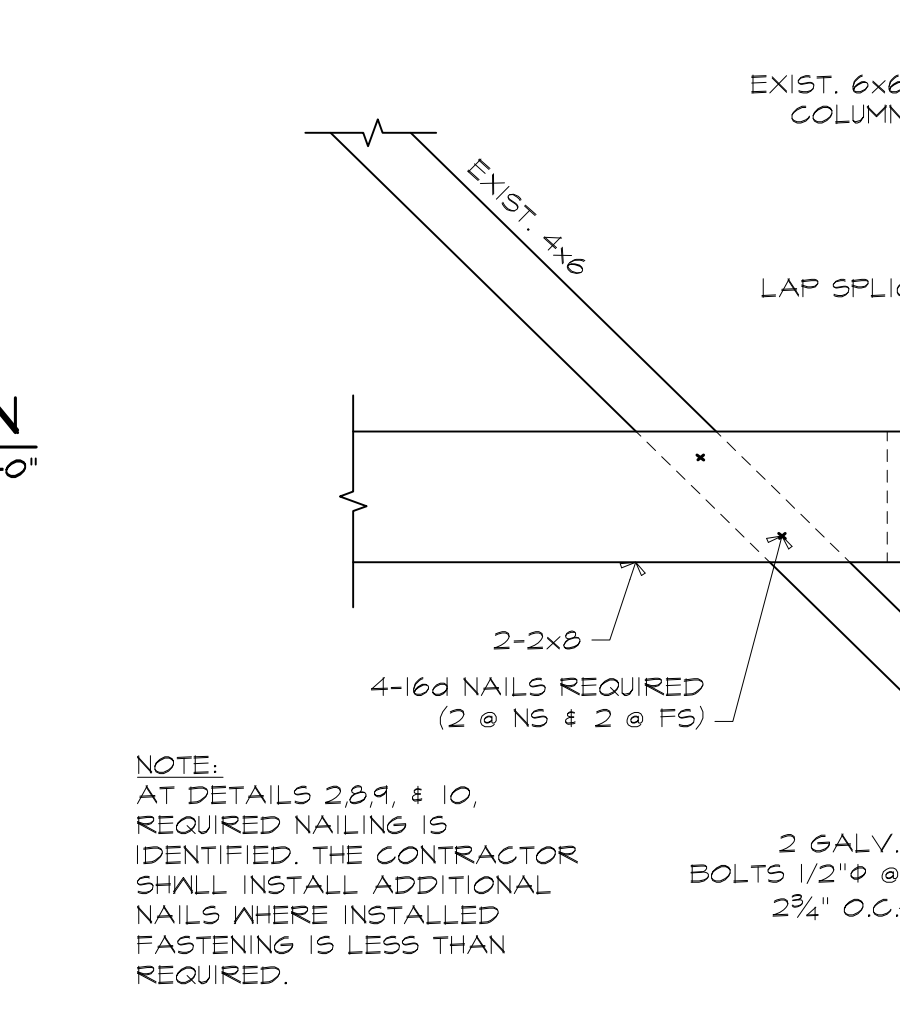
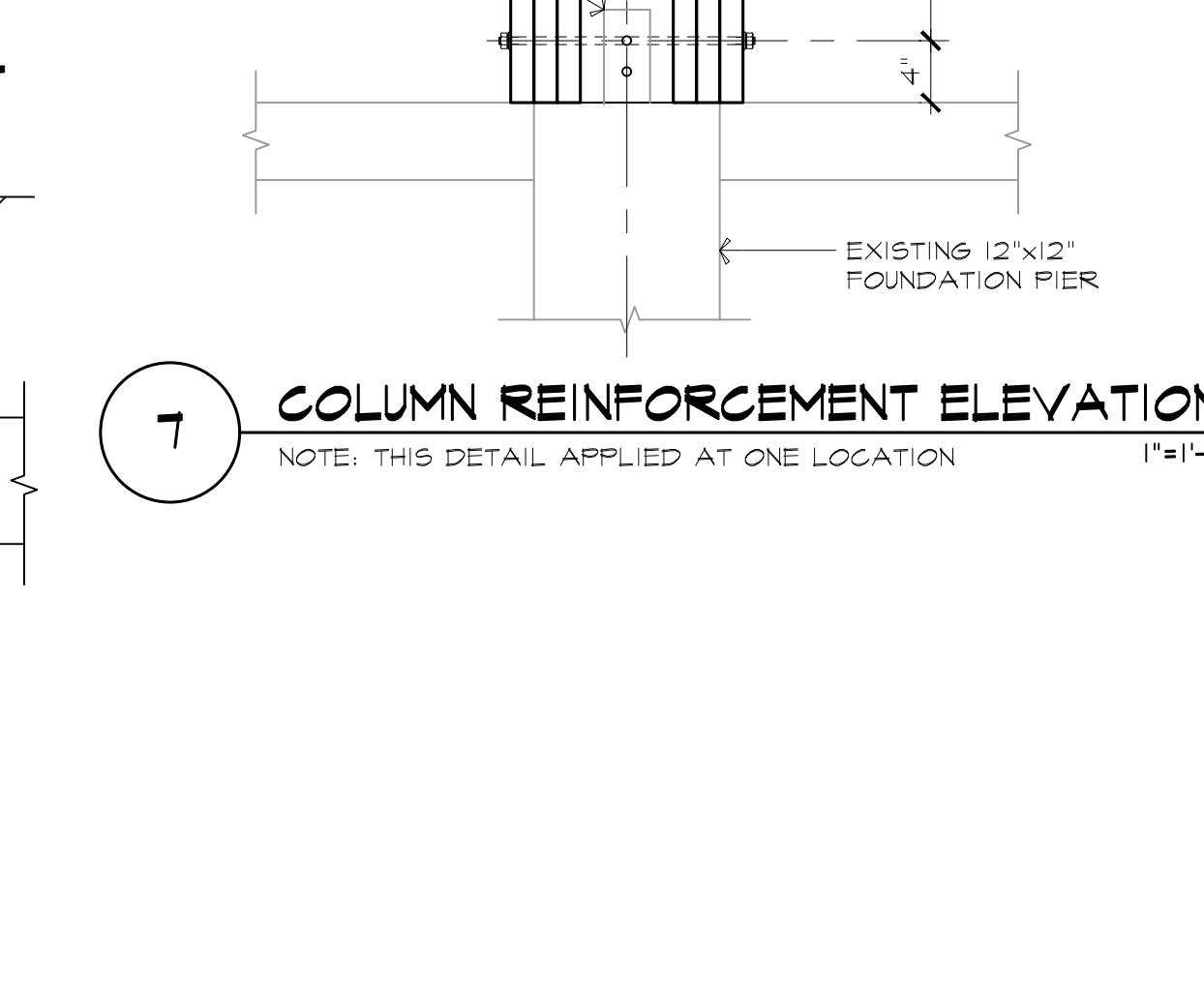
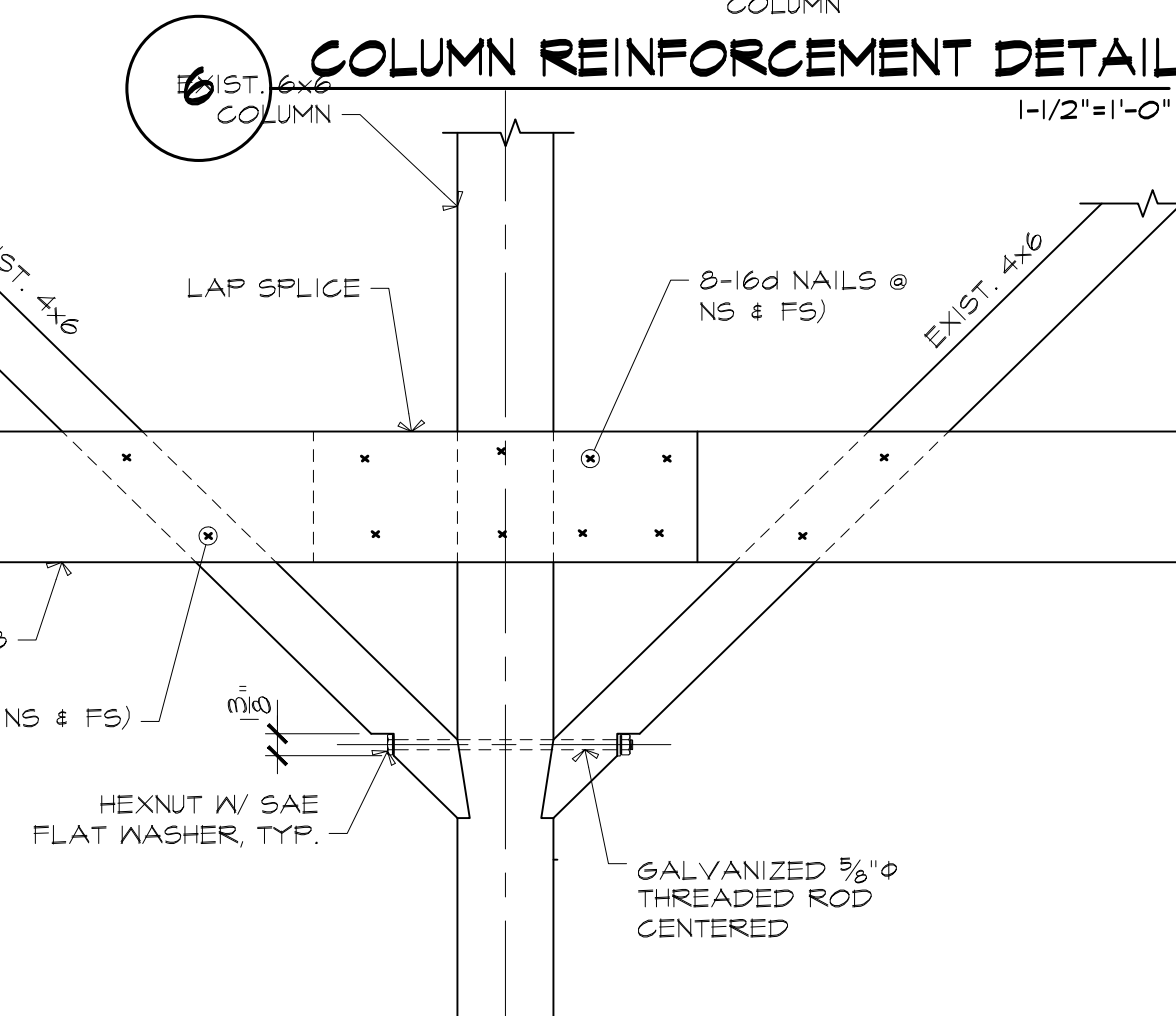
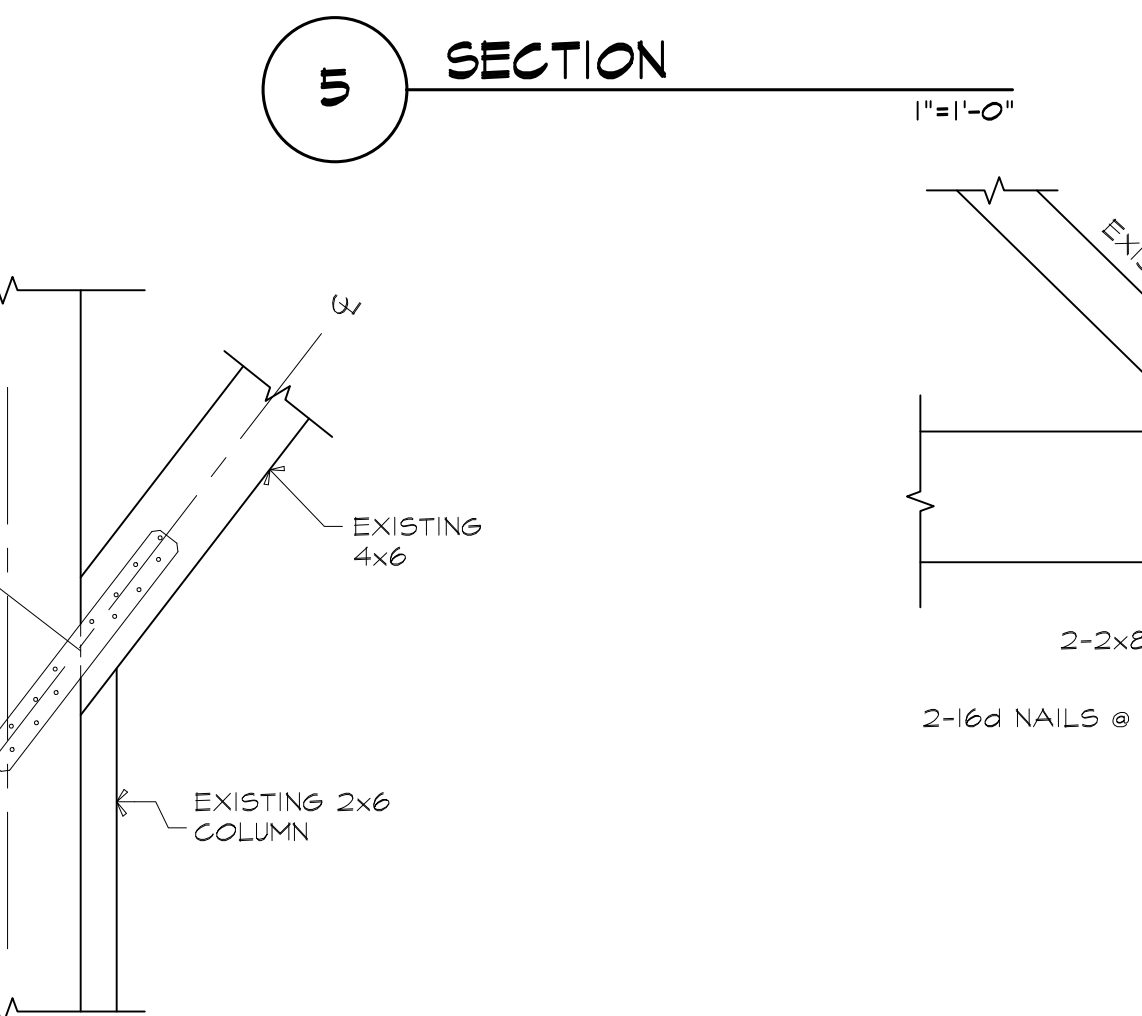
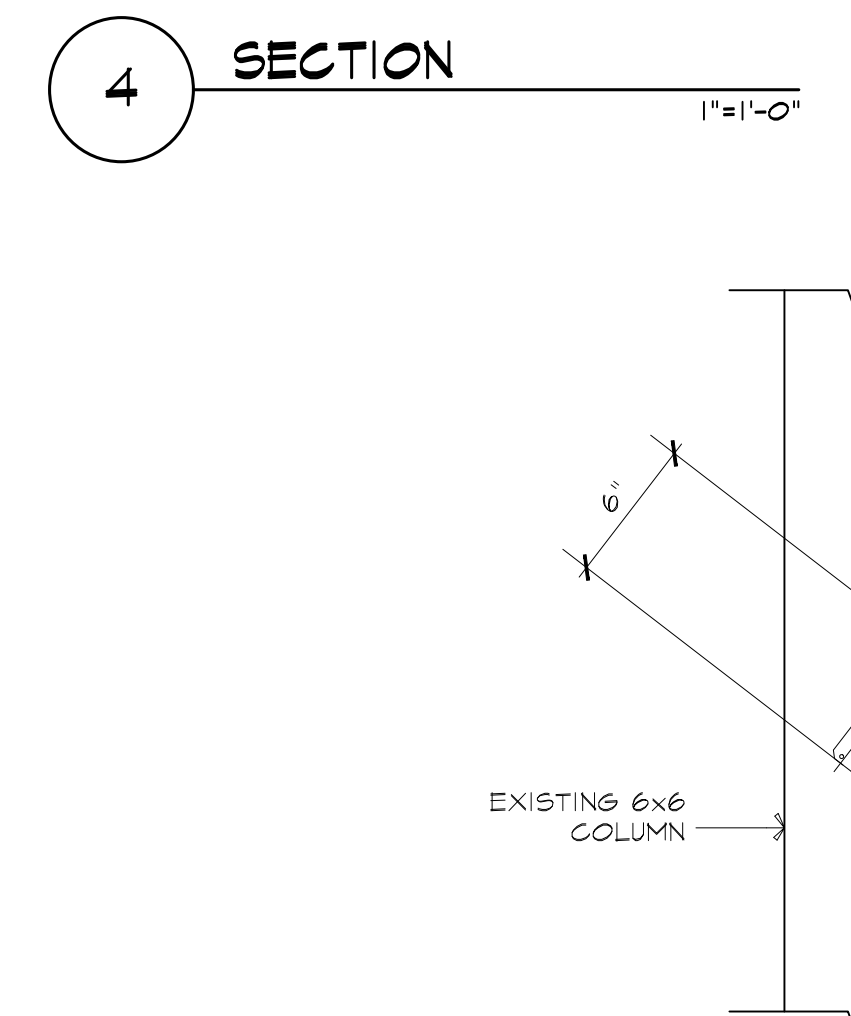
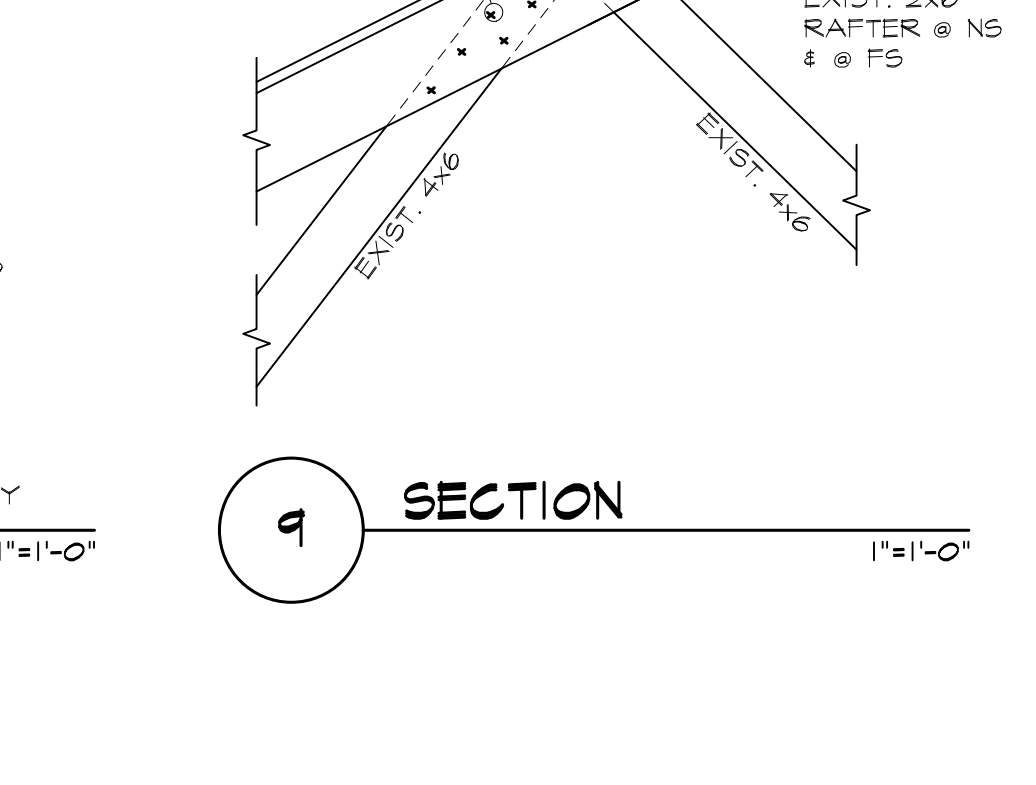
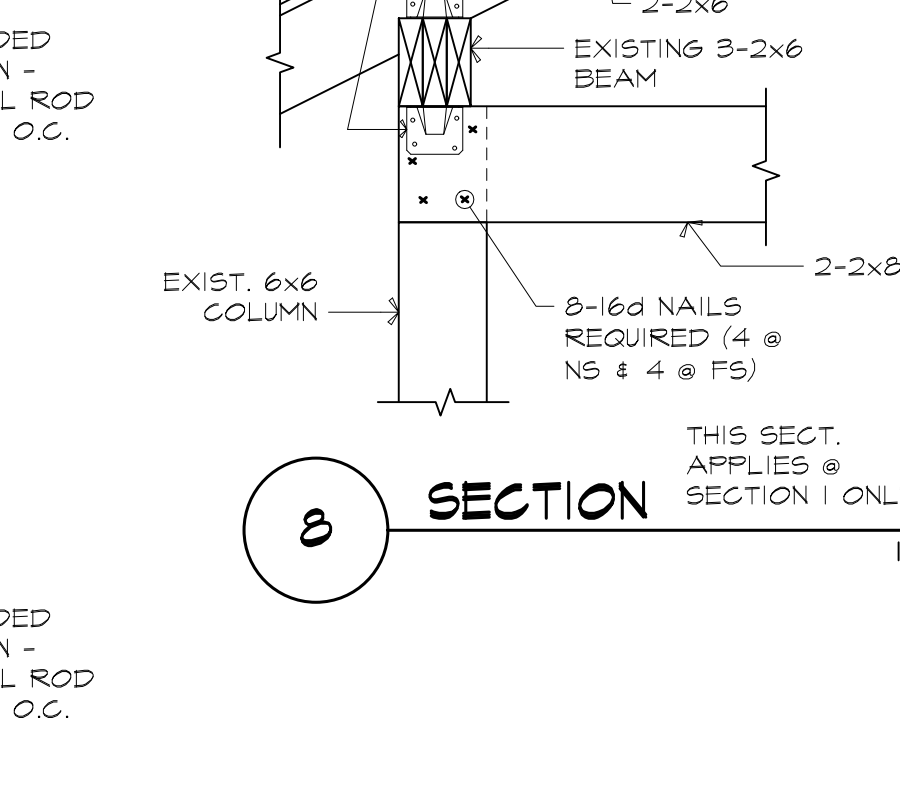
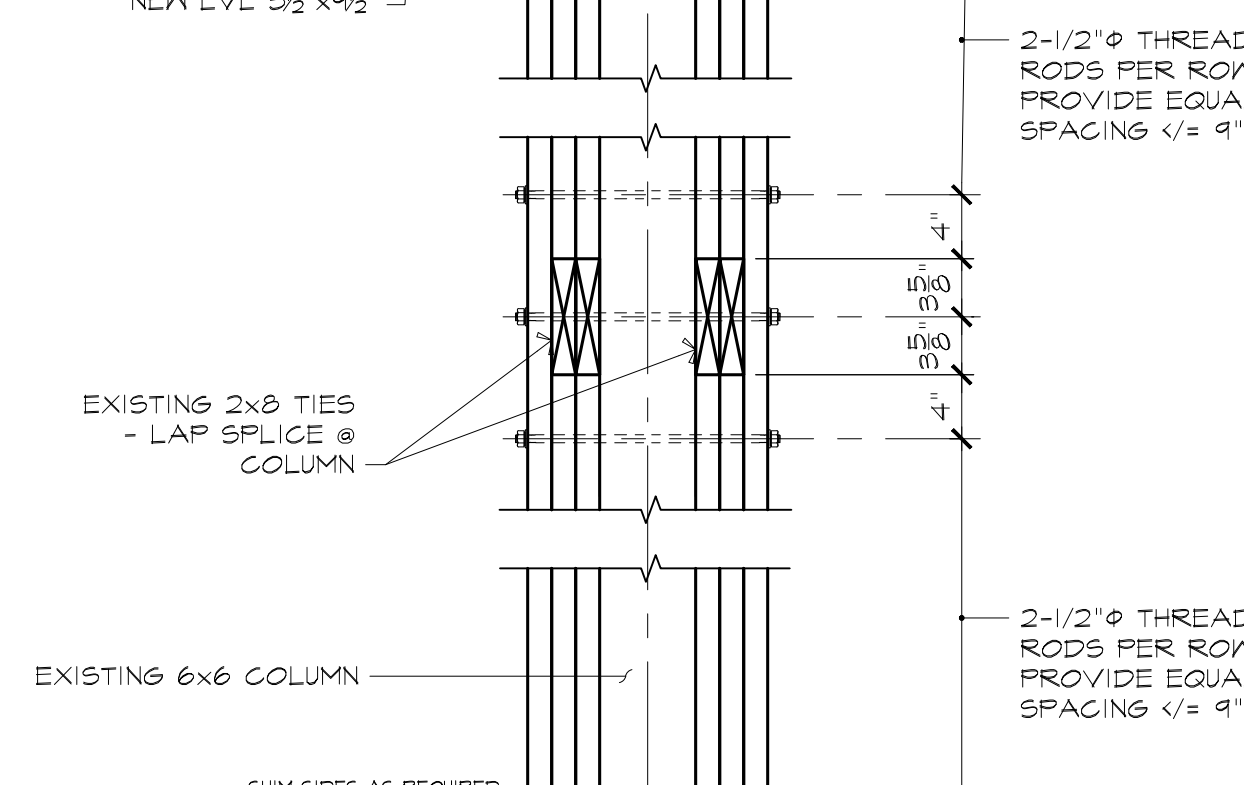
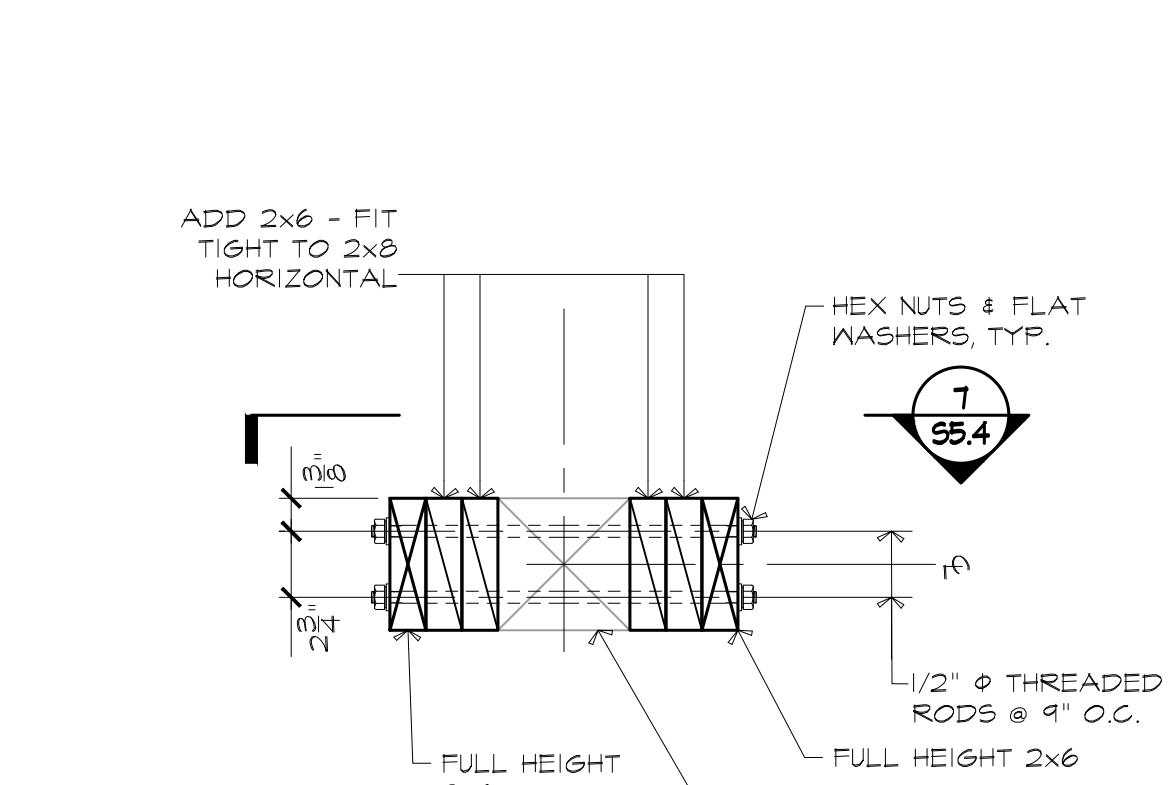
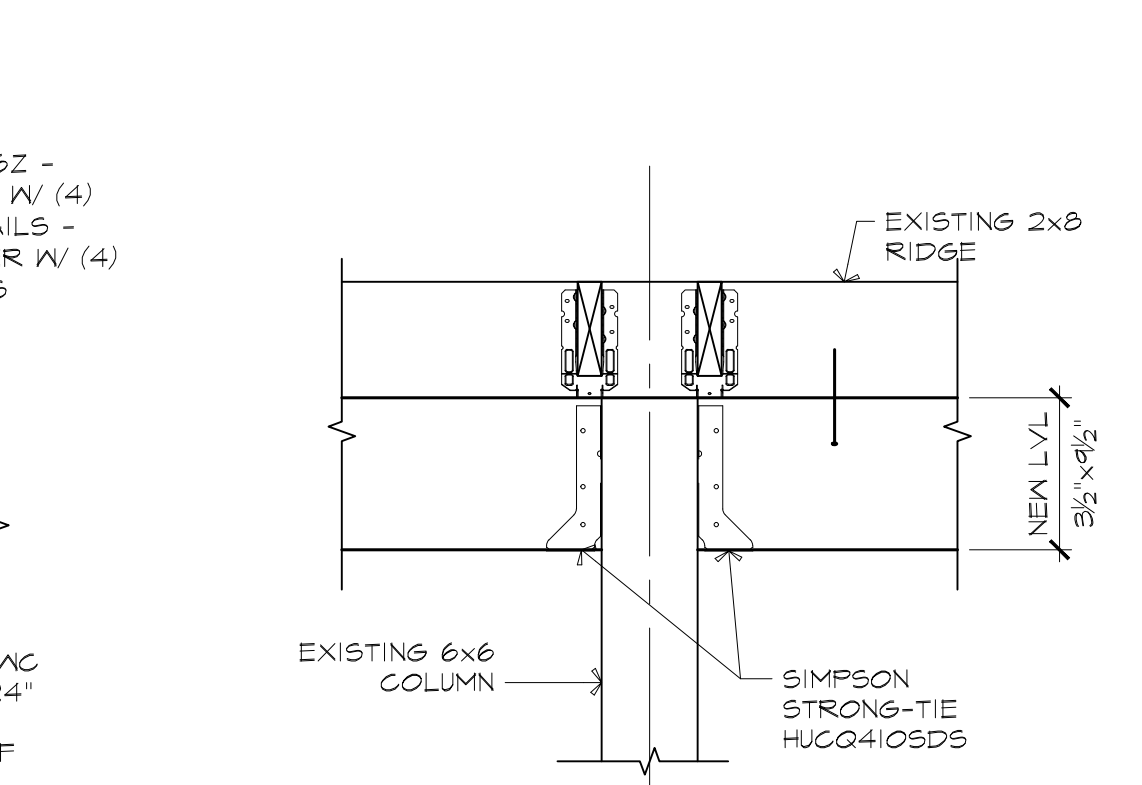
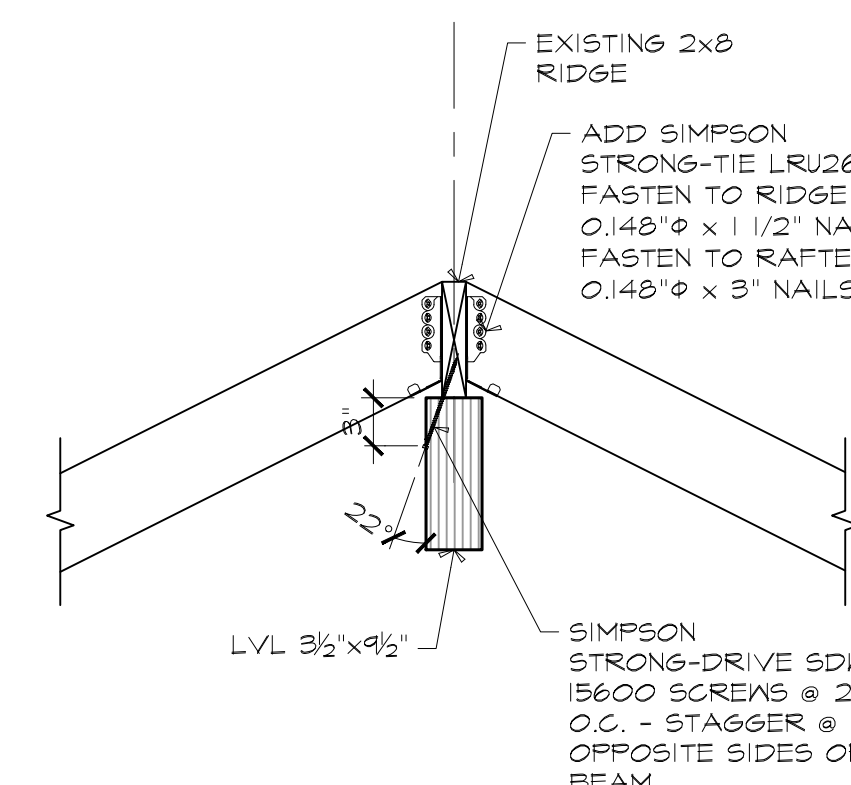
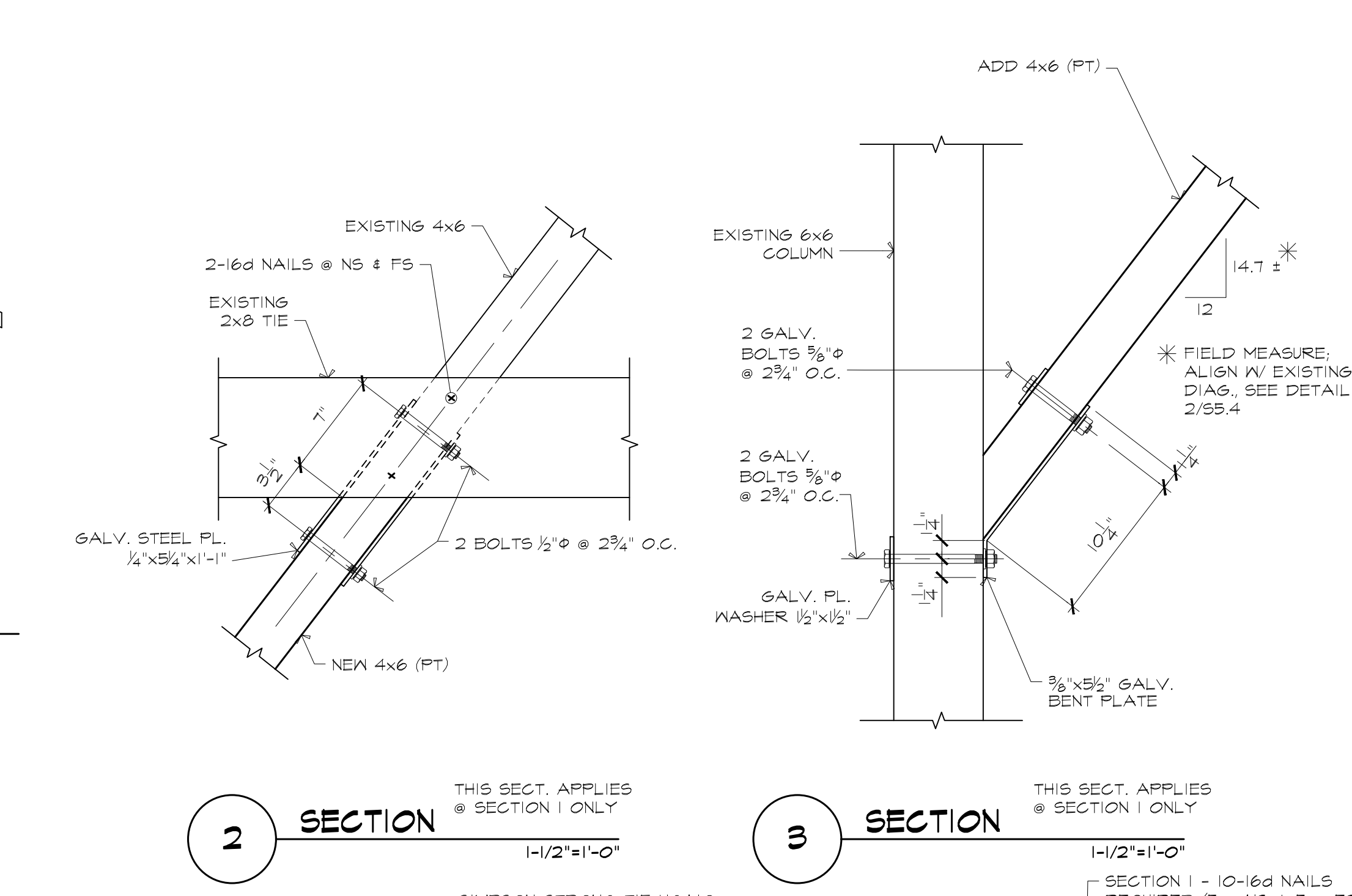
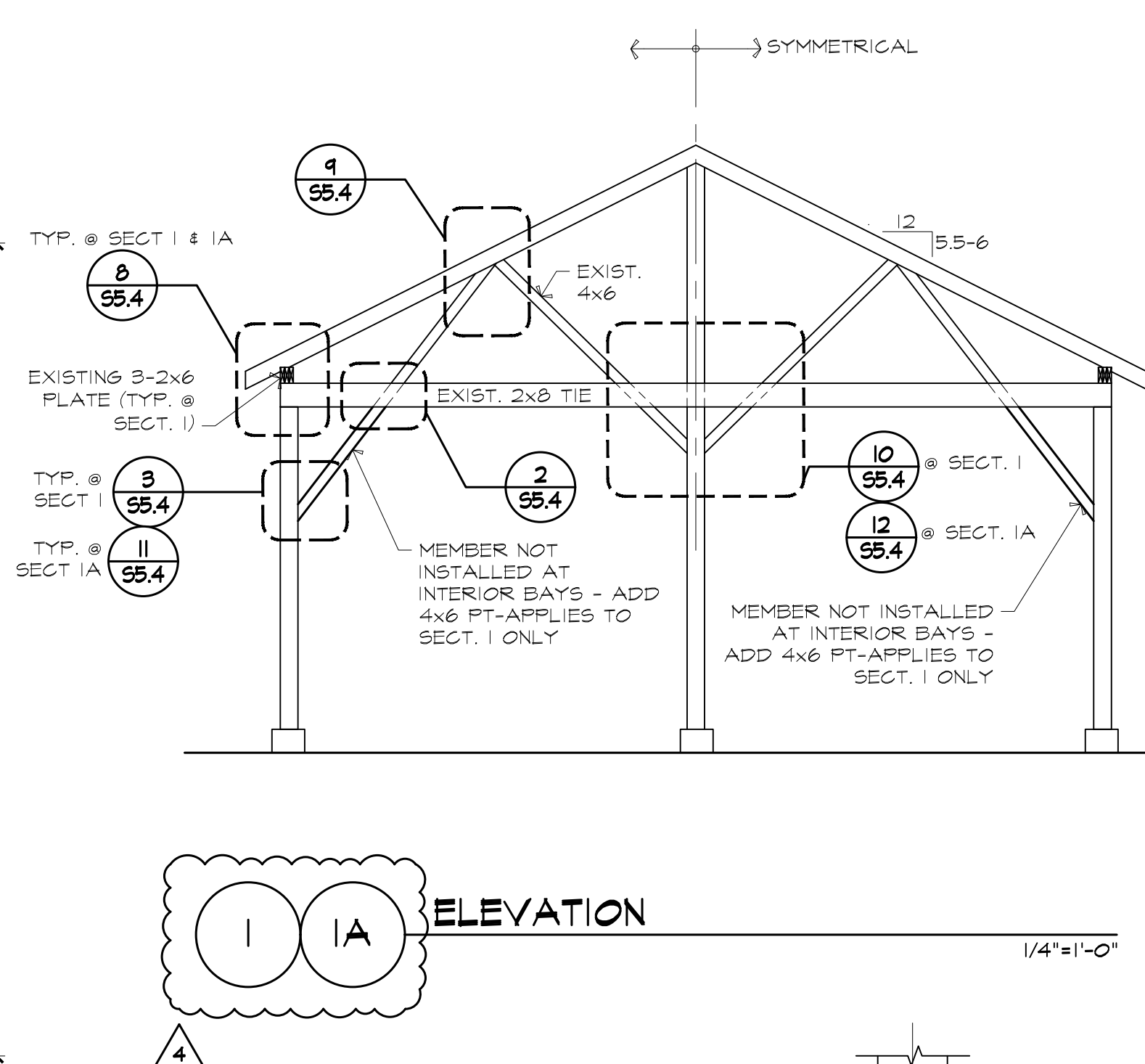
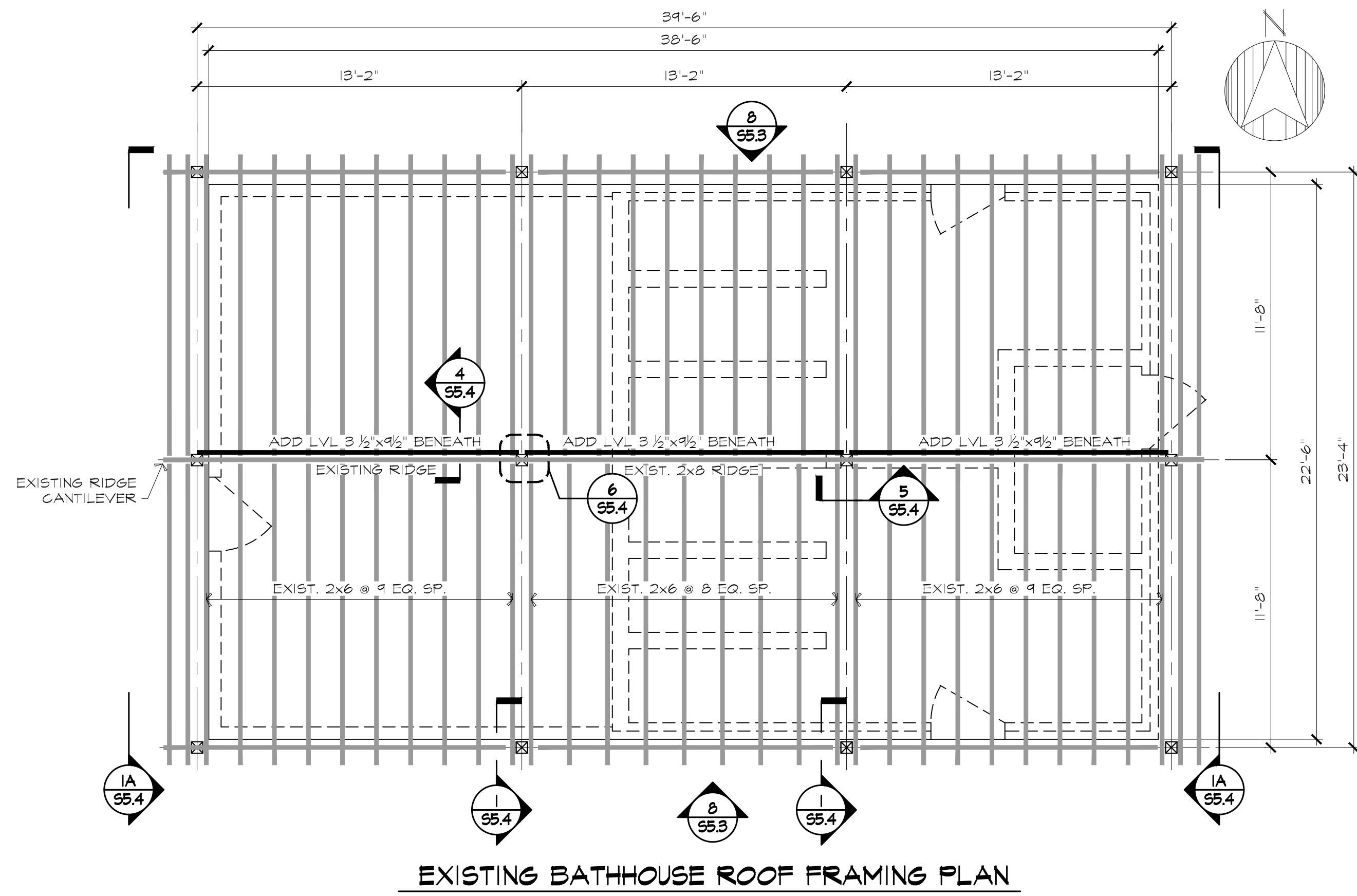
**11 TYPICAL PERIMETER FOUNDATION AT BATH HOUSE**  
1"=1'-0"



**12 SECTION: RAFTER BEARING**  
1"=1'-0"

REV	DATE	DESCRIPTION
4	6-20-24	Revision
2	5-23-24	Revision
	1-26-23	Fire Marshal Review



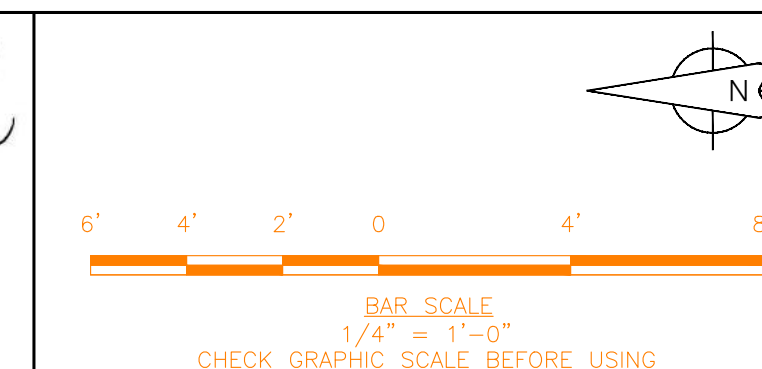
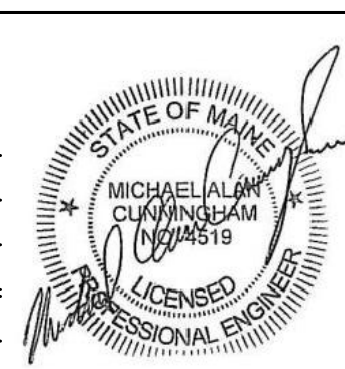


**ARCADIA DESIGNWORKS**  
 SOUTH  
 199 prospect street, suite A  
 portland, maine 04101  
 NORTH  
 22 balsam drive  
 Millinocket, maine 04462  
 PH: 207.347.5252 & 207.749.9306  
 arcadiadesignworks.com

**Lincoln / Haney**  
 Engineering Associates, Inc.  
 14 Maine Street  
 Suite 301, Box 7  
 Brunswick, Maine 04011  
 Phone: 207-729-1061 Fax: 207-729-2941

**MAINE DEPARTMENT OF Agriculture, Conservation & Forestry**  
 Cobscook Bay State Park - Shower Building & Utility Improvements  
 DENNYSVILLE, MAINE  
 Construction Drawings

REV	DATE	DESCRIPTION
4	6-20-24	Revision
3	6-11-24	Revision
2	5-23-24	Revision
1	1-26-23	Fire Marshal Review



**SECTIONS AND DETAILS**  
 MAY 2024  
**S5.4**