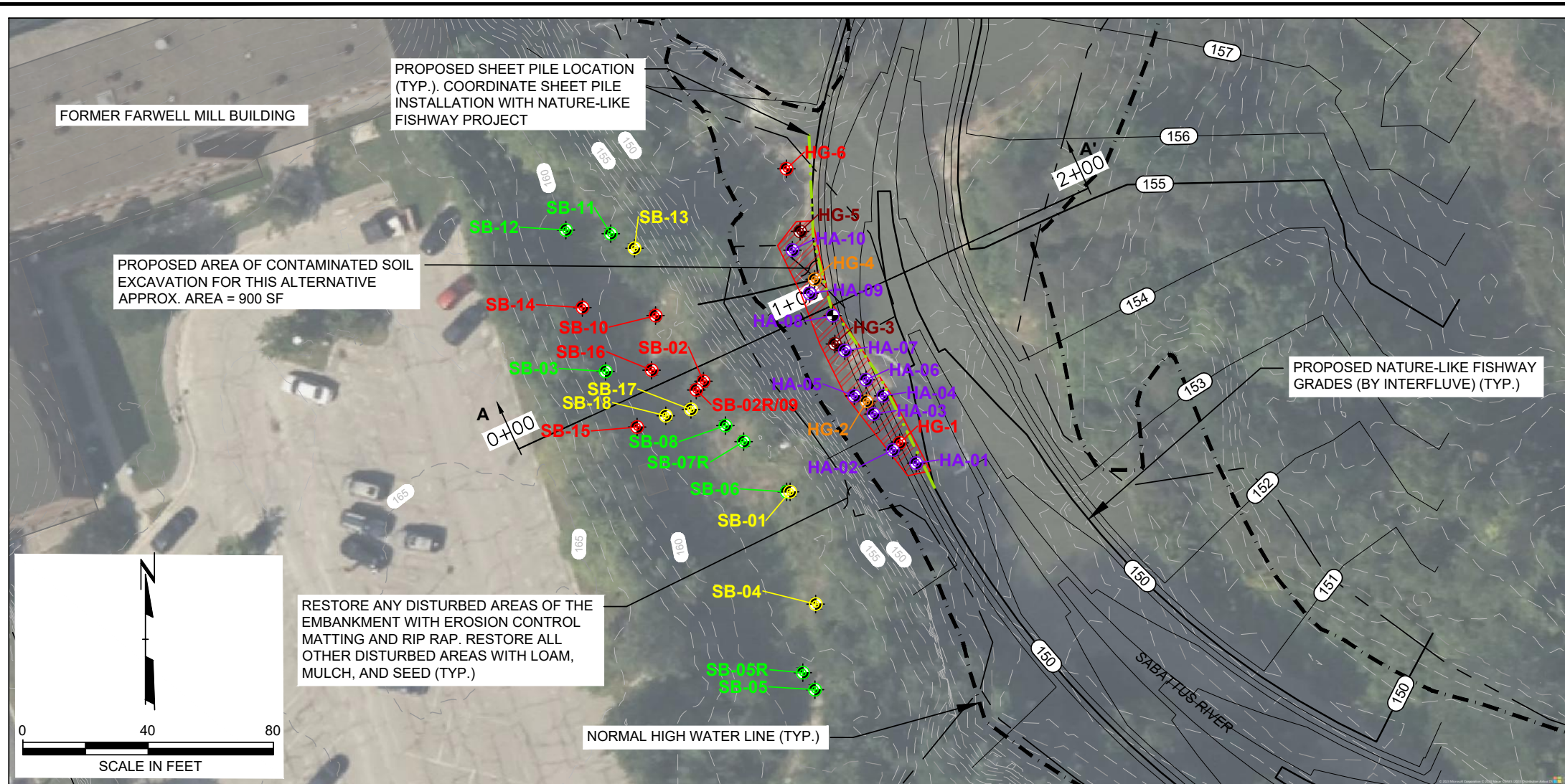


# Alternative 3A (Hybrid)

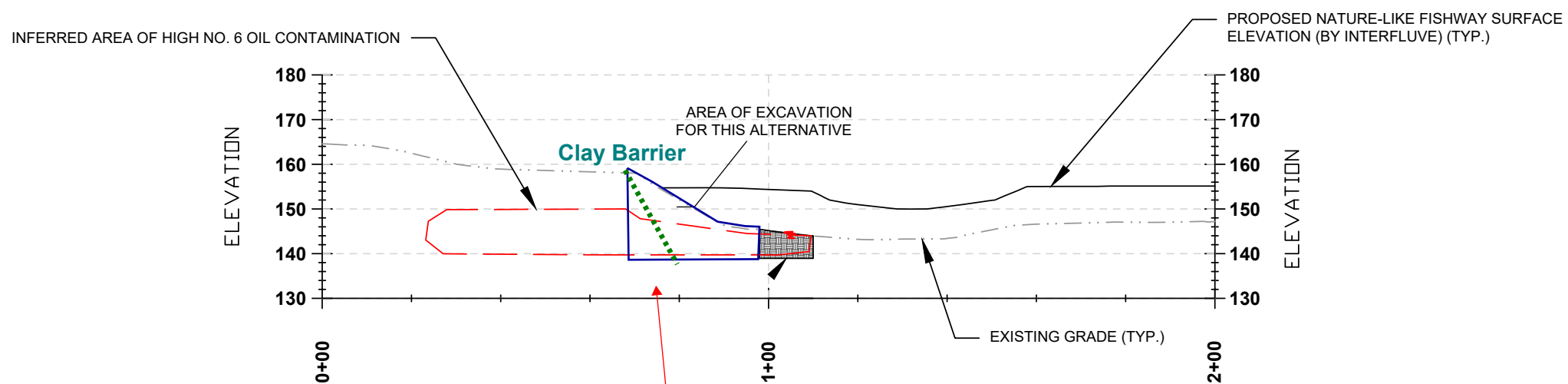


## LEGEND

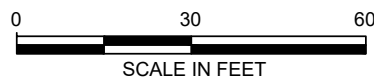
- SB-XX SOIL BORING ADVANCED BY MDEP IN 2021 - NO OIL DETECTED
- SB-XX SOIL BORING ADVANCED BY MDEP IN 2021 - OIL INDICATOR/NOT SATURATED
- SB-XX SOIL BORING ADVANCED BY MDEP IN 2021 - OIL SATURATED SOILS
- HG-X HAND-TOOL INVESTIGATION BY MDEP IN 2021 - SOME OIL PRESENT
- HG-X HAND-TOOL INVESTIGATION BY MDEP IN 2021 - SATURATED SEDIMENT
- HG-X HAND-TOOL INVESTIGATION BY MDEP IN 2021 - HEAVILY SATURATED
- HA-XX HAND-AUGER INVESTIGATION BY MDEP IN 2021 - OIL DETECTED
- INFERRED AREA OF NO. 6 OIL CONTAMINATED SOIL (SECTION VIEW)
- APPROX. LOCATION OF PROPOSED SHEET PILE BARRIER (PLAN VIEW)
- APPROXIMATE SOIL EXCAVATION BOUNDARY FOR THIS ALTERNATIVE
- 280 EXISTING MAJOR CONTOUR
- 278 EXISTING MINOR CONTOUR
- 279 PROPOSED MINOR CONTOUR (BY INTERFLUVE)
- 280 PROPOSED MAJOR CONTOUR (BY INTERFLUVE)

## NOTES

1. SOIL BORING AND GEOPROBE INFORMATION WAS PROVIDED BY MAINE DEP. THE INFERRED AREA OF NO. 6 OIL WAS DEVELOPED FROM THIS DATA.
2. THIS PROJECT WILL BE CONDUCTED IN CONJUNCTION WITH THE FARWELL DAM FISH PASSAGE PROJECT BY THE MAINE DEPT. OF MARINE RESOURCES. PROPOSED GRADES AND FEATURES SHOWN ON THIS PLAN ARE BY INTERFLUVE OF DAMARISCOTTA, ME.
3. PROPOSED FEATURES BY INTERFLUVE ARE TAKEN FROM A PLAN DATED SEPTEMBER 30, 2023 AND SHOULD NOT BE CONSIDERED FINAL.
4. WORK IS ASSUMED TO TAKE PLACE DURING LOW FLOW CONDITIONS. TEMPORARY DEWATERING EQUIPMENT WILL LIKELY BE REQUIRED TO COMPLETE THE WORK.



## SECTION A-A'



PROJECT:		MAINE DEP FORMER FARWELL MILL - LISBON, ME REMEDIAL OPTIONS ANALYSIS (ROA) 244 LISBON STREET, LISBON, ME 04250	
TITLE:		ALTERNATIVE 3A - LIMITED EXCAVATION WITH BARRIER	
DRAWN BY:	CJD/TRC	PROJ NO.:	566346
CHECKED BY:	TB	<b>FIGURE 2</b>	
APPROVED BY:	TB		
DATE:	DECEMBER 2023	63 Marginal Way, 4th Floor Portland, ME 04101 Phone: 207.879.1930 www.trccompanies.com	
FILE NO.:		566346 - BASE.dwg	