

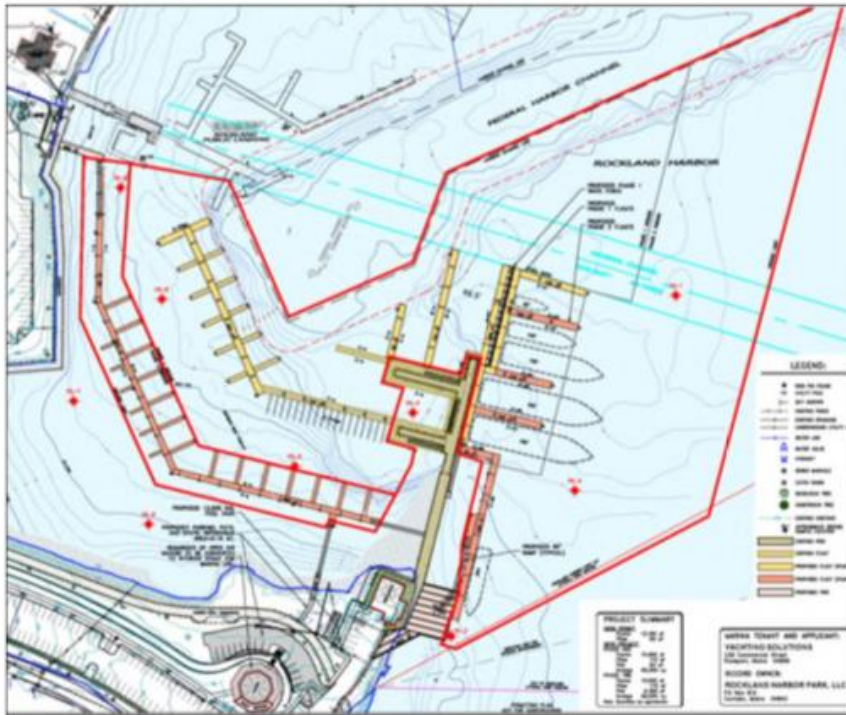


broadside boats and relocation of a city channel. Due to this opposition, this marina expansion option was abandoned.

**Avoidance and Minimization**

**Reduce Size of Project**

As discussed above, the project size has been reduced to accommodate public sentiment. As a result, the amount of direct and indirect sub-tidal impacts will be significantly reduced. By way of example, below is an image of an earlier concept that shows a much larger dredge area (shown in red) envisioned for the larger Inner Harbor project:



The dredge area shown above is over 11 acres. The current project has minimized the dredge area to approximately 3.0 acres