

**SURVEYOR'S NOTES:**  
 Property lines shown are taken from the plan titled "Standard Boundary Survey, Bracebridge Corporation, Fisher Engineering Properties, Water & Ocean Streets" dated April 19, 2000 and prepared by Coffin Engineering and Surveying.  
 Elevations shown are referenced to Mean Low Water (MLW) and are taken from the plan titled "Rockland Harbor Park, LLC, Trident Yacht Basin", dated December 17, 2009 and prepared by Garlley and Dorsky.  
 Orientation is referenced to Grid North, Nad 83 datum, Maine East Zone.

- LEGEND:**
- IRON PIN FOUND
  - UTILITY POLE
  - GUY ANCHOR
  - EXISTING FENCE
  - EXISTING DRAINAGE
  - UNDERGROUND UTILITY LINE
  - WATER LINE
  - ⊗ WATER VALVE
  - ⊗ HYDRANT
  - ⊗ SEWER MANHOLE
  - ⊗ CATCH BASIN
  - ⊗ DECIDUOUS TREE
  - ⊗ CONIFEROUS TREE
  - EXISTING CONTOUR
  - ⊗ APPROXIMATE DREDGE SAMPLE LOCATION
  - ▨ EXISTING PIER
  - ▨ EXISTING FLOAT
  - ▨ PROPOSED FLOAT (PHASE 1)
  - ▨ PROPOSED FLOAT (PHASE 2)
  - ▨ PROPOSED PIER

**PROJECT SUMMARY**

2009 PERMIT	
Floats	13,160 sf
Piles	65 sf
2019 PROJECT	
PHASE ONE	
Floats	15,900 sf
Piles	110 sf
Pier	54 sf
Dredge	55,300 cy
PHASE TWO	
Floats	15,600 sf
Piles	170 sf
Pier	6,300 sf
Dredge	92,000 cy
Note: Quantities are approximate	

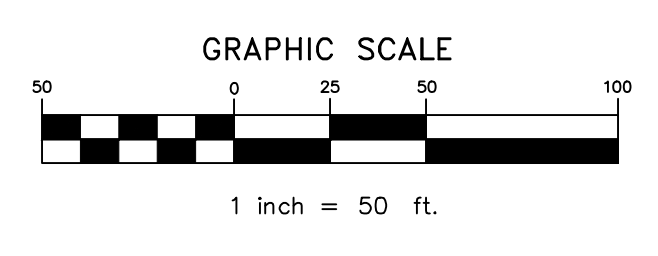
**MARINA TENANT AND APPLICANT:**  
**YACHTING SOLUTIONS**  
 229 Commercial Street  
 Rockport, Maine 04856

**RECORD OWNER:**  
**ROCKLAND HARBOR PARK, LLC**  
 PO Box 812  
 Camden, Maine 04843

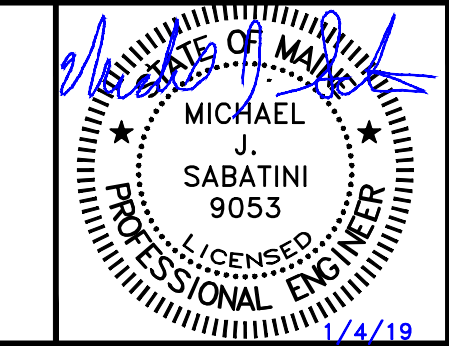
**LANDMARK CORPORATION**  
 SURVEYORS & ENGINEERS

219 MEADOW STREET ROCKPORT, MAINE 04856 PHONE: (207) 236-6757 WWW.LANDMARKMAINE.COM

FIELD WORK DATE:  
 FIELD WORK BY: KMB/EST  
 DRAFTED BY: MJS  
 CHECKED BY: KMB  
 PLAN DATE:  
**JANUARY 4, 2019**



**NRPA AND SITE LOCATION  
 PRE-APPLICATION SITE PLAN  
 FOR  
 MARINA EXPANSION**



**YACHTING SOLUTIONS**  
 OCEAN STREET  
 ROCKLAND, MAINE  
 KNOX COUNTY

**LANDMARK CORPORATION**