

Jeff Spinney – Boat ramp and dock system, Alna DEP #L-28397-4E-A-N, Inspection Notes & Photos

Project Location: 126 Golden Ridge Road, Alna

Date/Time: 1/7/2021, 11am – 12pm

Low tide: 11:30am

Conditions: Snow cover 2-3” deep; sunny; 33°F.

Department staff: Jami MacNeil; Cameron Dufour

Others on site: Jeff Spinney (licensee); Tom McKenzie (Alna CEO)

Notes:

Attendees met at the licensee’s house and walked down the tote road from house to project site. Boat ramp construction was complete. DEP staff measured the ramp and found it is 12 feet wide by approximately 30 feet long (beginning approximately at the highest annual tide line (HAT) and extending towards mean low water). The immediate upland at the top of the ramp had been regraded to tie into the ramp, as proposed on the approved plans. Ramp surface (rock aggregate) appeared stable. Licensee stated that geotextile fabric was placed under the stone ramp surface (as shown in construction photos sent by licensee). Adjacent upland was covered in snow; however, pushing snow aside, hay mulch was evident underneath (also evident in construction photos). DEP staff advised that the licensee should continue to monitor the upland area during any melting events and apply additional mulch as needed.

The approved seasonal floats were being stored in the upland. The approved seasonal aluminum ramp (gangway) was also in the upland, though it is slightly overhanging the coastal wetland. Staff advised the licensee to move it further onto the upland. The gangway was resting on a granite block, located in the upland several feet from the HAT line. DEP advised the licensee to move the block to a different upland location during the off-season to prevent the block from being considered a permanent structure as defined in the NRPA, and licensee agreed.

Signs advising of boating speed laws and best practices to prevent spread of invasive species were posted in a visible location at the launch area as required in the NRPA permit.

Summary: Project is complete, site appeared stable to the extent observable under snow conditions. No adverse environmental impacts were observed.



Photo 1: Ramp, from upland

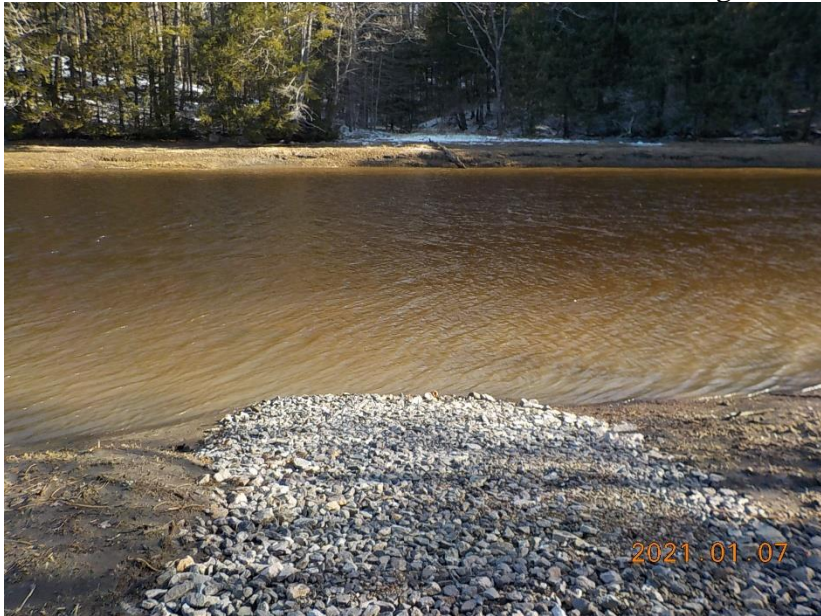


Photo 2: Ramp, lower section



Photo 3: Ramp surface



Photo 4: Ramp surface (key for scale)



Photo 5: Looking north



Photo 6: Looking north



Photo 7: Looking south



Photo 8: Looking south



Photo 9: Signs



Photo 10: Aluminum ramp (gangway)



Photo 11: Granite block for gangway



Photo 12: Floats stored in upland