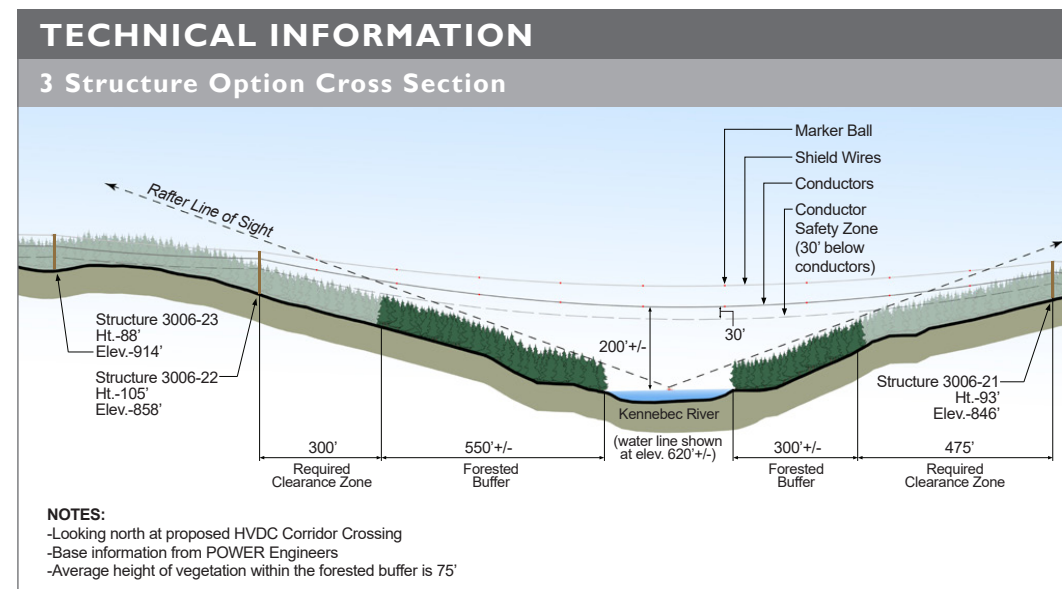
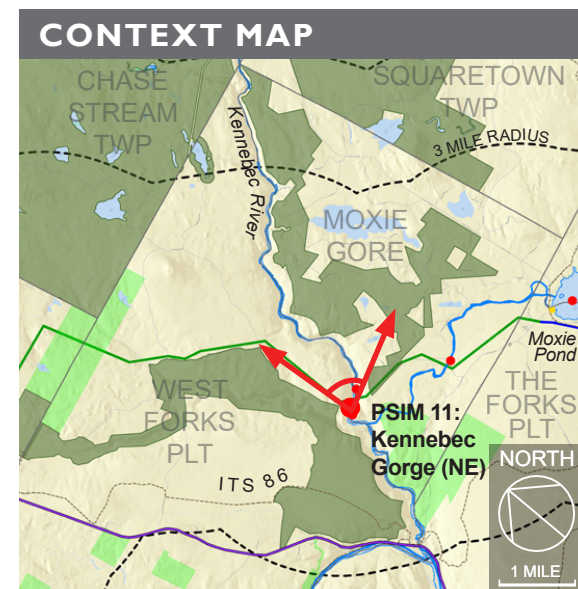
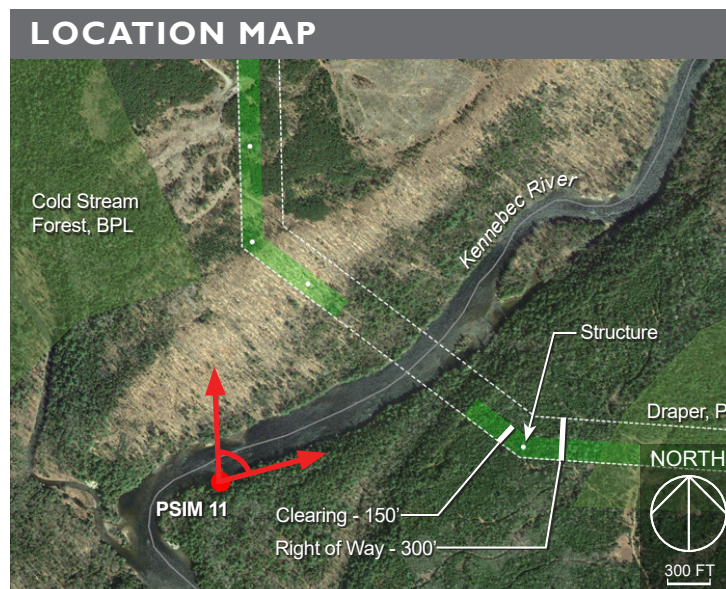


# PHOTOSIMULATION 11: KENNEBEC GORGE Looking North, Moxie Gore, 3 Structure Option



**Proposed Conditions:** Panoramic view looking from north to east from near the picnic area on the Kennebec River, 1,400' +/- south of the proposed HVDC transmission line crossing. The top of one structure will be visible from this viewpoint at a distance of 1,530'. A forested buffer of approximately 550' will be maintained along the northwest shore between the shoreline and the closest structure. The conductors would be approximately 200' above the water level. Approximately eighteen marker balls will be placed on the shield wires and conductors above the Kennebec Gorge. Approximately twelve marker balls are visible in this photosimulation. See Appendix B: Study Area Photographs for additional images.



Photograph / Photosimulation Information	
Location	45.374107°, -69.940380°
Viewing Direction	North to East
Horizontal Angle of View	84°
Date and Time	08/15/16 at 1:21 pm
Camera Focal Length	50 mm
Camera Make/Model	Canon EOS 5D Mark III
Photo Source	Powers Engineering
Proposed Structures Visible	1
Approximate Distance to Nearest Visible Structure	1,530 feet

December 11, 2017      PAGE 1 OF 5





**Existing Conditions:** Normal view looking northeast from the Kennebec Gorge .



**PHOTOSIMULATION I IA: KENNEBEC GORGE Looking Northeast, Moxie Gore, 3 Structure Option**



**Proposed Conditions:** Normal view looking northeast from near the picnic area on the Kennebec River 1,400' +/- south of the proposed HVDC transmission line crossing. The top of one structure will be visible from this viewpoint at a distance of 1,530'. The conductors would be approximately 200' above the water level. Approximately eighteen marker balls will be placed on the shield wires and conductors above the Kennebec Gorge.





**Existing Conditions:** Normal view looking northeast from the Kennebec Gorge .



**PHOTOSIMULATION I 1B: KENNEBEC GORGE Looking Northeast, Moxie Gore, 3 Structure Option**



**Proposed Conditions:** Normal view looking northeast from near the picnic area on the Kennebec River 1,400'+/- south of the proposed HVDC transmission line crossing. The conductors would be approximately 200' above the water level. Approximately eighteen marker balls will be placed on the shield wires and conductors above the Kennebec Gorge.