

Site:  
ECKROTE DRIVEWAY  
CULVERT

Prepared for:  
RICHARD AND JANET  
ECKROTE  
42 GRANDVIEW AVE.  
LINCOLN PARK, NJ

PLAN, PROFILE  
AND CROSS  
SECTIONS



CIVIL ENGINEER:  
MAUREEN P. MCGLONE, PE #7705  
400 COMMERCIAL STREET, SUITE 404  
PORTLAND, ME 04101  
207-772-2891

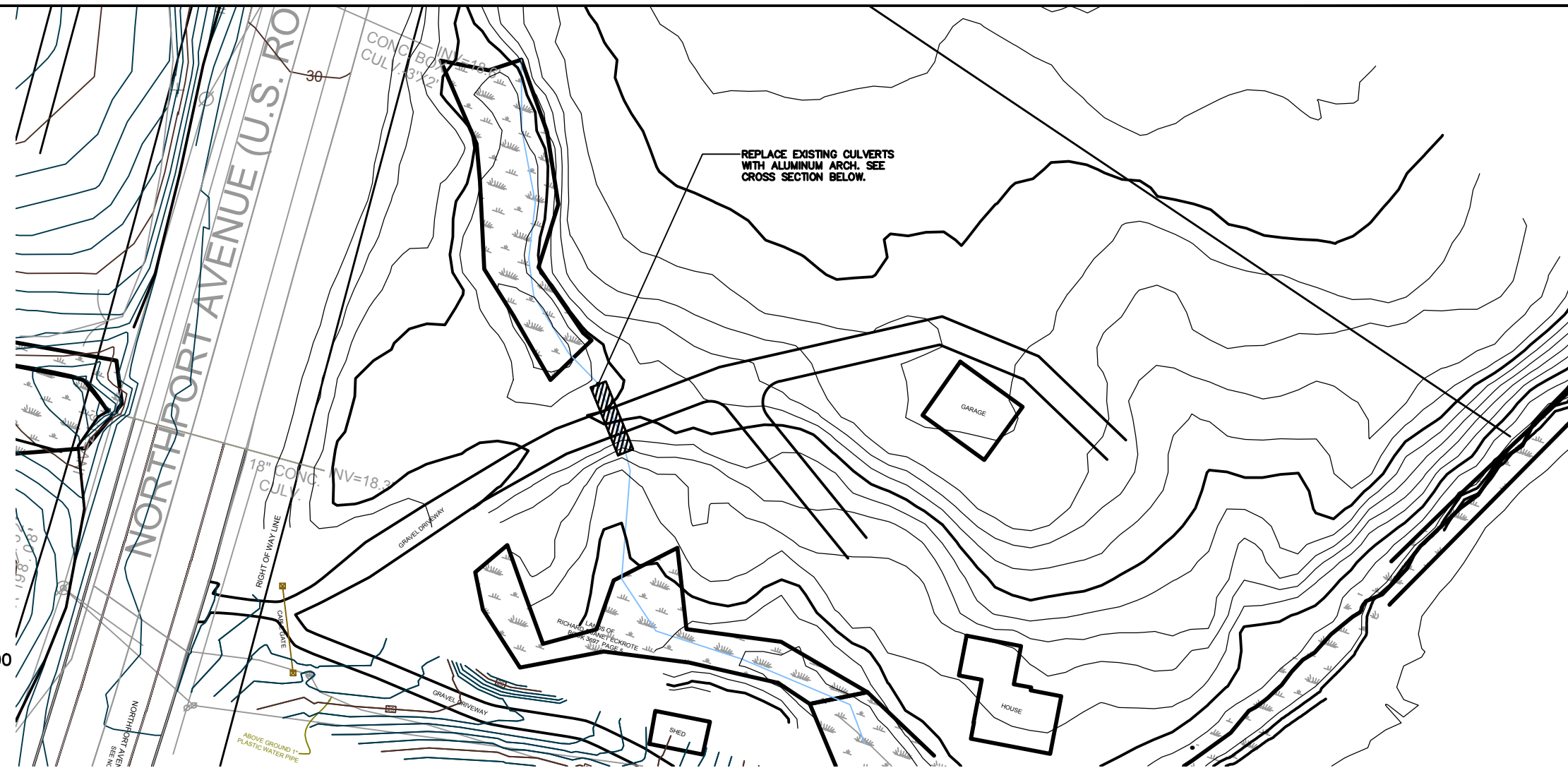


400 Commercial Street  
Suite 404  
Portland, Maine 04101  
Tel (207) 772-2891  
Fax (207) 772-3248  
www.ransomenv.com

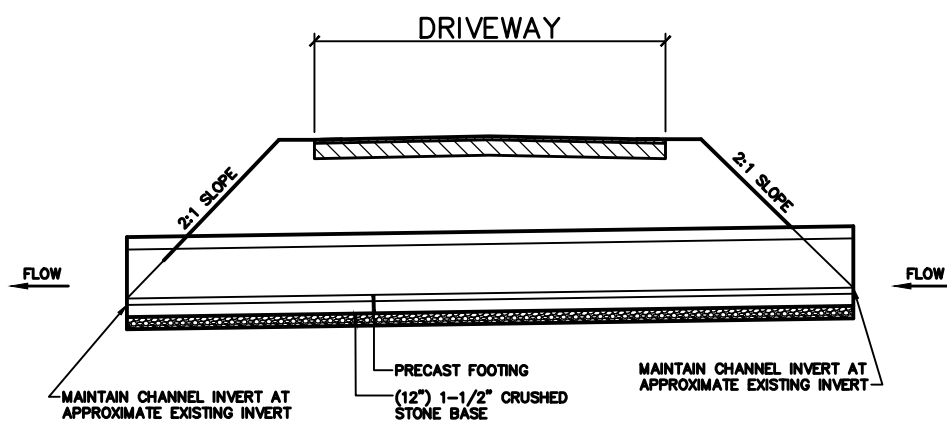
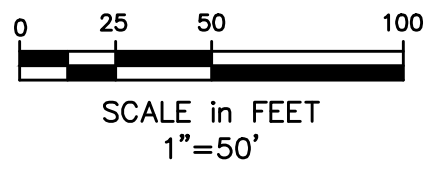
B	PERMITTING	5/10/19
A	REVIEW	4/29/19
No.	Revision/Issue	Date

Project: 171.05027

Sheet No:  
CC-101

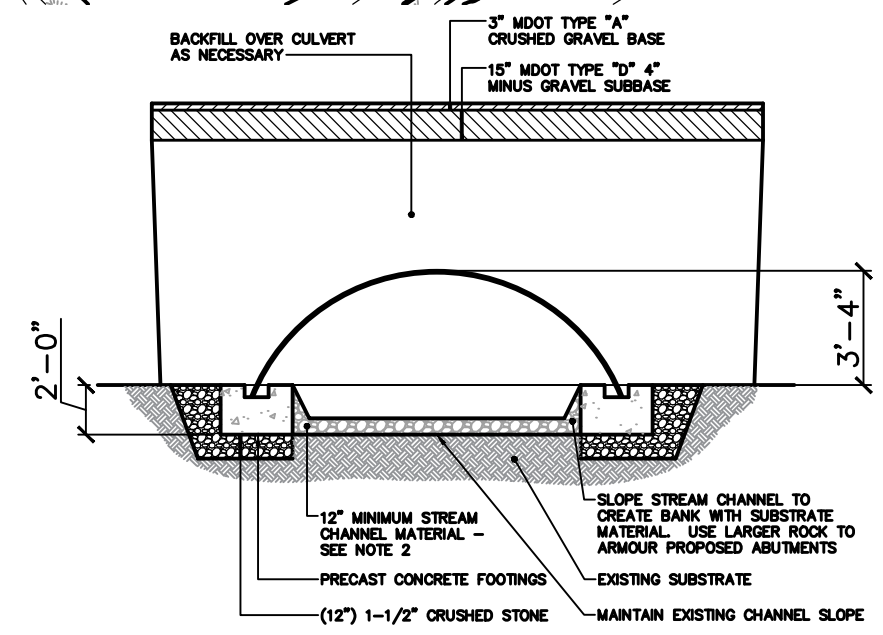


REPLACE EXISTING CULVERTS  
WITH ALUMINUM ARCH. SEE  
CROSS SECTION BELOW.



- NOTES:**
- CULVERT TO BE SET AT BEST FIT TO EXISTING CHANNEL ELEVATION AS SHOWN. EXISTING CHANNEL ELEVATION HAS BEEN DETERMINED BY INTERPOLATION BETWEEN UPSTREAM AND DOWNSTREAM ELEVATIONS.
  - USE EROSION CONTROL BLANKETS ON SLOPE LESS THAN OR EQUAL TO 2:1; SLOPES GREATER THAN 2:1 REQUIRE RIPRAP STABILIZATION.
  - RIPRAP STABILIZATION SHALL CONSIST OF MIRAFI 500X GEOTEXTILE FABRIC OR APPROVED EQUAL WITH 30" IF 6" D50 RIPRAP.

**CULVERT PROFILE**  
NOT TO SCALE



- NOTES:**
- CULVERT TO BE SET AT BEST FIT TO EXISTING CHANNEL ELEVATION.
  - STREAM CHANNEL EMBEDMENT MATERIAL TO MATCH EXISTING CHANNEL MATERIAL.

**CROSS SECTION OF ALUMINUM ARCH CULVERT**  
NOT TO SCALE

Examples of Culvert Design

