

MAINE DEPARTMENT  
OF EDUCATION (DOE)

---

# Assessment Lunch & Learn Office Hours

**September 11, 2024**

Please post questions you may have in the chat box – we will work to answer them during the session and add them to a Q&A document.

We will begin shortly.

**Presented by:** The Assessment Team





**Jodi Bossio-Smith**  
Director of Assessment



**Mechelle Ganglfinger**  
MSAA Alternate and  
ELP Assessments Coordinator



**Dr. Regina Lewis**  
NAEP & International Assessments



**Krista Averill**  
General Assessments  
Coordinator



**Leah Jarvis**  
Business Analyst



**Daniella Crone**  
Office Specialist

Welcome to the Maine DOE

Meet Our Team

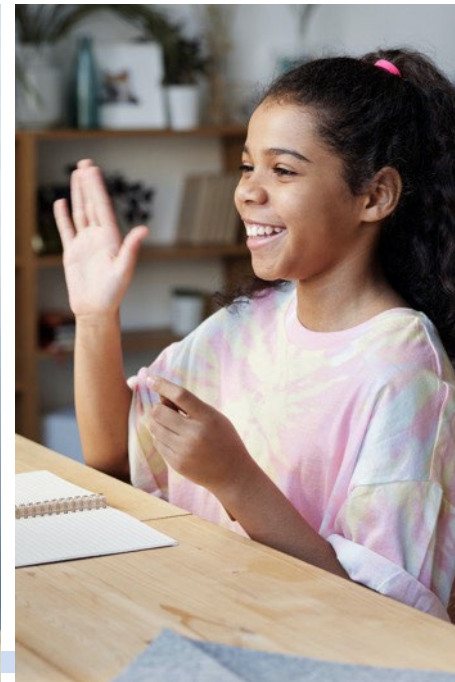
# Assessment

## Today's Agenda

General Updates:

- Maine Through Year and  
Maine Science  
Assessments
- National and  
International  
Assessments
- ACCESS
- MSAA

# Mission & Vision



**To promote the best learning opportunities for all Maine students by providing information, guidance, and support to our schools, educators, and leaders and by providing adequate and equitable school funding and resources.**

# Technical Assistance

---

[SAU Request Form for Technical Assistance](#)

Available to all SAUs upon request

Targeted technical assistance continues to focus on participation across the MEA



Assessment Name	Assessment Dates	Window	Delivery Method	Required Participants
Access for ELLs (English Language Proficiency)	January 6, 2025 - February 28, 2025	9 Weeks	Kindergarten: Paper Grade 1-12: Online	English Learners K-12
Alternate Access for ELLs (English Language Proficiency)	January 6, 2025 - February 28, 2025	9 Weeks	Paper/Pencil	English Learners in Grades K-12 with Significant Cognitive Disabilities
Maine Through Year Assessment: Mathematics & Reading	Fall (Required): September 16, 2024 - October 25, 2024 Winter (Optional): January 6, 2025 - February 14, 2025 Spring (Required): April 14, 2025 - May 30, 2025	6 Weeks	Online	Students in Grades 3-8, & 2nd Year of High School
Maine Science Assessment	Grades 5 and 8: May 12, 2025 - May 23, 2025  High School: April 2, 2025 - April 17, 2025	2 Weeks	Online	Grades, 5, 8, & 3rd Year of High School
MSAA: Mathematics & ELA/Literacy	March 10, 2025 - April 25, 2025	6 Weeks	Online	Students with Significant Cognitive Disabilities; Grades 3-8, & 3rd Year of High School
MSAA Science	March 10, 2025 - April 25, 2025	6 Weeks	Online	Students with Significant Cognitive Disabilities; Grades 5, 8, & 3rd Year of High School

# Maine Educational Assessments (MEA)

## 2024-25 Assessment Calendar

# National & International 2024-25 Assessment Calendar

Assessment Name	Assessment Dates	Required Participants
National Assessment of Educational Progress (NAEP)	January 2026 - March 2026	Mathematics and Reading Grades 4, 8, & 12 and Science Grade 8 at sampled schools
Teaching and Learning International Survey (TALIS)	N/A	International survey of principals and teachers at grades 7, 8, and 9 at sampled schools
Program for International Students Assessment (PISA) Field Test	3/17/2025 - 5/9/2025	Math, Reading, and Science age 15 at sampled schools
International Computer Literacy & Information Literacy Study (ICILS)	N/A	Grade 8, Computer & Information Literacy at sampled schools
Progress in International Reading Literacy (PIRLS)	Spring 2026	Grade 4 Reading achievement in literary experience and reading to acquire and use information at sampled schools
Trends in Mathematics & Science Study (TIMSS)	N/A	Grades 4 & 8 Mathematics & Reading at sampled schools

# Data Requests

- Suppressed data for 2020-21 to 2022-23 are currently available in the [ESSA Dashboard](#).
- Legacy data (suppressed data for some years prior to those available in the ESSA Dashboard) are available [here](#).
  - Legacy data currently posted does not include 2015-16 to 2018-19.
- To access data from unavailable academic years and/or unsuppressed data, please use the “Submit a Data Request” link at the bottom of the [Data Warehouse page](#).

# Preparing for the 2024-25 Maine Educational Assessments



# Assessment Security Training

## For District and School Assessment Coordinators:

- [Assessment Security Training Video for District and School Assessment Coordinators](#) (11 minutes)
- [2024-25 Assessment Security Handbook](#)

## For Assessment Administrators/Proctors:

- [Assessment Security Overview Training Webisode](#) (5 minutes)
- [Assessment Irregularities! What Now? Security Training Webisode](#) (3 minutes)

**All staff involved in the administration of Maine Educational Assessments must sign the Assessment Security & Data Privacy Agreement, which is found in Appendix A of the [Assessment Security Handbook](#). The SAU must maintain these agreements throughout the current school year.**

*Please note that the Maine Through Year Assessment, MSAA, and Maine Science Assessment each have additional assessment-specific trainings.*

# Maine Comprehensive Assessment System (MECAS) Guidelines

The [MECAS Guidelines](#) provide schools with information regarding:

- Federal and state assessment requirements
- Enrollment and participation requirements
- Participation exceptions

Student eligibility for the MEAs is based on the enrollment information entered by the SAU into Synergy.

# Maine Through Year Assessment

# Spring 24 RIT Scores: Question from the Field

## *How did the recalibration of summative items impact students' RIT scores?*

The recalibration of summative items impacted different grade levels to varying degrees.

Scores on the high school reading test were most greatly impacted by the rescoring, as the high school summative reading items required the greatest recalibration.

Subject	Grade	Original Mean	Adjusted Mean	Change in Mean
Math	3	199.58	201.25	1.67
	4	207.33	208.28	0.95
	5	214.07	214.95	0.88
	6	216.55	218.43	1.88
	7	220.80	222.70	1.90
	8	227.17	227.94	0.77
	10	229.72	231.83	2.11
Reading	3	194.75	197.98	3.23
	4	201.65	204.19	2.54
	5	208.17	209.62	1.45
	6	213.20	213.45	0.25
	7	216.59	216.74	0.15
	8	219.13	219.47	0.34
	10	216.66	222.11	5.45

# Helpful Hint: Accessing ISRs

For those *who previously accessed Spring 2024 ISRs in July*, please click **Regenerate** to ensure you are accessing the most up-to-date reports with page 2 removed.

The screenshot displays the 'ISR Bulk Print' interface. At the top, there is a navigation bar with 'Maine Department of Education' and a 'Menu' button. Below this, a breadcrumb trail shows 'View Student Score Reports' followed by filters: 'Organization', 'Student', 'RIT', 'Demographic', 'ISR Bulk Print', 'Comparison Report', and 'Report Export'. The main section is titled 'Select ISR Download Criteria' and includes a note '\* denotes required fields'. Under 'Download ISR's for:', there are two buttons: 'Bulk Students' (selected) and 'One Student'. The filter section includes: 'Organization \*' (empty), 'Test Administration \*' (Maine Through Year Spring 2024), 'Grade \*' (Grade 8), and 'Groups' (- Select or Type Group -). A 'Find' button is located at the bottom right of the filter section. Below the filters is a 'Generate All' button. A table with the following columns is shown: 'Organization', 'Grade', 'Language', 'Group', '# Students', 'Generate Files', 'Status', and 'Download'. The table contains one row: Organization (empty), Grade (08), Language (English), Group (All Students), # Students (149), Generate Files (Regenerate button), Status (Sep 05, 2024 03:23 PM CDT), and Download (ZIP icon). A red arrow points to the 'Regenerate' button, and a red circle highlights the status text.

Organization	Grade	Language	Group	# Students	Generate Files	Status	Download
	08	English	All Students	149	<a href="#">Regenerate</a>	✓ Sep 05, 2024 03:23 PM CDT	

# Reminder: Supplemental Page for Families

The appropriate grade-level supplemental page for families must be distributed with the Individual Student Report.

Individual Student Report (ISR) Templates

### Spring 2024 Individual Student Report Template Translations

- Arabic: [Grades 3-5](#) and [Grades 6+](#)
- Chinese: [Grades 3-5](#) and [Grades 6+](#)
- English: [Grades 3-5](#) and [Grades 6+](#)
- French: [Grades 3-5](#) and [Grades 6+](#)
- Khmer: [Grades 3-5](#) and [Grades 6+](#)
- Kinyarwanda: [Grades 3-5](#) and [Grades 6+](#)
- Lingala: [Grades 3-5](#) and [Grades 6+](#)
- Portuguese: [Grades 3-5](#) and [Grades 6+](#)
- Somali: [Grades 3-5](#) and [Grades 6+](#)
- Spanish: [Grades 3-5](#) and [Grades 6+](#)
- Vietnamese: [Grades 3-5](#) and [Grades 6+](#)


#### Spring 2024 Supplemental Page for Families

[Grade 3](#) [English]

- [Arabic](#)
- [Chinese](#)
- [French](#)
- [Kinyarwanda](#)
- [Lingala](#)
- [Portuguese](#)
- [Somali](#)
- [Spanish](#)
- [Vietnamese](#)

[Grade 4](#) [English]

- [Arabic](#)
- [Chinese](#)
- [French](#)
- [Kinyarwanda](#)
- [Lingala](#)
- [Portuguese](#)



# Understanding Scores from the Maine Through Year Assessment

Participants will learn about the two score types produced by the Maine Through Year Assessment: RIT scores and the Maine scale score, including their similarities, differences, and uses.

Opportunities for Q&A will be provided, and participants may submit their questions prior to the session. [[Form to Submit Questions](#)]

- September 24, 3:30-5:00 PM [[Registration Link](#)]
- October 10, 3:30-5:00 PM [[Registration Link](#)]

# 2024-25 Through Year Assessment Schedule

## Fall 2024 (Required)

September 16 – October 25, 2024

Students must be enrolled in Synergy in order to be reflected in the school's roster in Acacia. It is the responsibility of the SAU/school to ensure that students are enrolled in Synergy before the first day of the local administration schedule.

## Winter 2025 (Optional)

January 6 – February 14, 2025

## Spring 2025 (Required)

April 14 – May 30, 2025

*\*The spring administration will be closed April 21-25 for spring break.\**



# Preparing for the Fall Administration

## District & School Assessment Coordinator Training

- MEA Security Training: Watch [training video](#), review [handbook](#), and sign Security & Data Privacy Agreement (Appendix A).
- Maine Through Year Assessment: Assessment Coordinator Training Module
  - If you did not receive an email from NWEA on August 26, you will need to [request access to the module](#).
  - Complete prior to the local administration of the fall Maine Through Year Assessment.
  - Keep a copy of the module completion certificate on file throughout the school year.

## Proctor Training

- MEA Security Training: Watch [2 webinars](#) and sign Security & Data Privacy Agreement.
- [Maine Through Year Assessment Proctor Training Video](#) (9 minutes)

# Preparing for the Assessment Administration

drop-down menu added to the [Maine Through Year Assessment webpage](#)

Resources organized by role

## Preparing for the Assessment Administration

### 2024-25 Manuals and Guides

ALL manuals and guides can be found on our Maine Through Year NWEA Connection page: <https://connection.nwea.org/s/maine-connection>

### For Students

- [Tutorial Video](#) (Vimeo)
- [Tutorial Video](#) (YouTube)
- Video: [What is a Computer Adaptive Test?](#)

### For Proctors

- [Proctor Training Video](#) [[Transcript](#)]
- [Assessment Security Webisodes](#)
- [Assessment Administration Guide](#)
- [Manage Online Testing Guide](#) - Only for proctors that will be monitoring student progress in the Acacia platform

### For Technology Coordinators

- [NWEA System and Technology Guide](#) (Updated July 2024)
- [System Requirements Guide](#)
- [Online Readiness Tools / Secure Browser Download](#)
- [NWEA Status Page](#): Visit this page for updates regarding the availability and performance of MAP Growth & NWEA State Assessments.

### Support for the MAP Growth Platform:

- [How to move students between districts in the MAP Growth platform](#)
- [How to manage users in MAP Growth](#)

### For District and School Assessment Coordinators

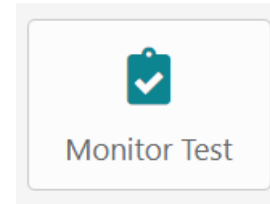
- Assessment Coordinator Training Module
  - If you are already signed up for the training module, once logged into NWEA's [Professional Learning Online](#) you can navigate to the module from the homepage or [access it directly](#).
  - If you are not signed up for the training module, please [complete the request form](#).
- [Assessment Coordinator Guide](#)
- [User & Student Management Guide](#)
- [2024-25 Multilingual Learner Exemption Guidance for the Maine Through Year Assessment](#)
- [Fall 2024 Reset Process Flow](#)
  - [Reset Request Form](#)

# Helpful Hint:

## Printing Test Tickets in Manage Online Testing

To ensure that all students are able to assess on the first day of your local administration, please do not wait until the morning of the administration to print test tickets.

Test tickets are printed from Manage Online Testing.



If a few students are missing from Manage Online Testing but those students are in Acacia, you can “force” a student to appear in Manage Online Testing by saving the accessibility supports.

If several students are missing from Manage Online Testing, please contact NWEA Partner Support.

× Menu

### Home

#### Students

View & Edit

Add Student

Upload

Student Groups

#### Online Testing

Secure Browser

Manage

#### Reports

Student Scores

Operational

#### Organizations

View & Edit Orgs

View & Edit Users

Home / Students / Student Profile

[Back to Results](#)

The Student Profile page includes three tabs near the top right - Profile (manage student demographics), Accessibility Supports (manage accommodations and designated supports, and NTCs managed by the Maine DOE), Tests (manage test registrations). Please note that most users will only have the ability to view data on the Students Profile tab and will not have edit access. Any edits to student demographics should first be made in Synergy.

**Profile**

Manage student demographics

1

**Accessibility Supports**

Manage PNP accommodations

**Tests**

Manage test registrations

## Student's Accessibility Supports

Test Administration \*

2

Maine Through Year Fall 2024

[View Supports](#)

Human Reader for Reading Passages (Grades 6+ ONLY) - Accommodation (TTSC)	-	-
Mathematical Supports - Designated Support (MS)	-	<input type="checkbox"/>
Scribe - Accommodation (SC)	<input type="checkbox"/>	<input type="checkbox"/>
Small Group or Individual Setting - Designated Support (SGS)	<input type="checkbox"/>	<input type="checkbox"/>

### Maine Through Year Fall 2024 Test Attributes

	[EN] Reading Grade 5	[EN] Mathematics Grade 5
Non-Tested Code – Assignment of NTCs is limited to ME DOE. Please do not select NTCs. (NTC)	<input type="text" value="- Select -"/>	<input type="text" value="- Select -"/>

3

**Save Updates**

# Virtual Educator Panel: High School Content & Bias Review

- **Participants:** Educators and school/SAU administrators with experience in high school math and/or reading instruction or curriculum
- **Purpose:** To review questions to ensure assessment material in math and reading is appropriate, free of bias, and aligned to Maine's accountability standards, the Common Core State Standards
- **Dates:** October 22-24, 2024 from 4:00-7:00 PM
- **Location:** Virtual, link will be provided by NWEA
- **Stipend:** \$525, includes attendance at all three evening virtual sessions, as well as 8-12 hours of pre-work (\$100 for each virtual evening session and \$225 for completion of pre-work)

If interested, please complete [this registration form](#).

# Register for Fall 2024 NWEA PL Offerings

## Balanced Assessment Systems for Leaders\*

- Session 1: September 17, 3:30-4:30 PM
- Session 1: September 18, 11:30 AM – 12:30 PM
- Session 2: October 7, 3:30-4:30 PM
- Session 2: October 16, 11:30 AM – 12:30 PM

## Student-Centered Assessment Literacy\*

- Session 1: November 12, 3:00-4:30 PM
- Session 2: November 14, 3:00-4:30 PM

## Using Achievement Level Descriptors to Ensure Classroom Rigor

- October 17, 3:00-4:30 PM

## Triangulating Data for Instructional Insights

*(previously titled Using Multiple Data Sources to Inform Instruction)*

- October 15, 3:00-4:30 PM

\*Participants may attend either session or both sessions. Attendance at session 1 is not necessary for attendance at session 2.

# Maine Through Year Assessment: *Whom do I contact?*

## NWEA Maine Partner Support

(855) 430-1777

[techsupport@nwea.org](mailto:techsupport@nwea.org)

- Technical issues with the Acacia platform
- Technical issues with the State Solutions Secure Browser
- Technical issues with the MARC (MAP Growth) platform, including rostering in MARC
- Support with pre-administration activities in the Acacia platform (e.g., creating groups or assigning accommodations)
- Support administering the online assessment
- Information regarding procedures for students taking accommodated paper-based forms
- SAU Data Clean-Up Tasks

## Maine DOE MEDMS Helpdesk

[MEDMS.Helpdesk@maine.gov](mailto:MEDMS.Helpdesk@maine.gov)

(207) 624-6896

- Fixing a student who incorrectly appears or does not appear in your assessment roster in NEO
- Help determining if a student is eligible for the Maine Through Year Assessment, based on information entered by the SAU into Synergy

## Maine DOE Assessment Team

[Krista.Averill@maine.gov](mailto:Krista.Averill@maine.gov)

(207) 215-6528

- Questions related to assessment content, accessibility, scoring, and reporting
- Policy-related questions
- Fixing a student who appears on your assessment roster in NEO but does not appear in Acacia
  - *Please wait at least 36 hours after making the update in Synergy.*
- Any problems that NWEA Maine Partner Support or MEDMS Helpdesk are not able to resolve – For NWEA Partner Support, if you have a case number, please provide.



# Maine Science Assessment

# Maine Science Assessment

## *Reporting*

Reports available in the Kite  
Reporting platform mid-October.

# Maine Science Assessment: Understanding & Utilizing Score Reports

Participants will learn how the structure of the Maine Science Assessment reflects the three dimensions of the Next Generation Science Standards (disciplinary core ideas, science and engineering practices, and crosscutting concepts) as well as how score reports can inform educational decision making.

- October 29, 3:30-4:30 PM [[Registration Link](#)]
- November 4, 3:30-4:30 PM [[Registration Link](#)]

# Maine Science Assessment

## *Looking Ahead to Spring 2025:*

### **Changes to the Administration**

- ALL Grade Levels: Removal of Session 4 (Student Questionnaire)
- High School ONLY: Sessions 1, 2, and 3 reduced from 60 minutes each to 50 minutes each
  - No change in the number of questions
  - Spring 2022 and 2023 data reflect that nearly all high school students *without extended time* complete each session within 50 minutes








### **Administration Schedule**

- High School: April 2-17, 2025
- Grades 5 and 8: May 12-23, 2025

# National and International Assessments

Wrapping up 2024 and moving forward

# National and International Assessments – NAEP 2025

	Long-Term Trend 			Field Test 				
Sample Level	National			National			Puerto Rico	
Grade or Age	Age 13	Age 9	Age 17	4	8	12	4	8
Subject (s)	  Math and Reading			  Math and Reading			 Math	
Devices	Paper-based Assessment			School and NAEP devices				
Number of Sessions	1 or 2			2 (1-2 if school devices)				
Students per Session	25 or 50			25 (25-50 if school devices)				
Session Duration	90 minutes			120 minutes				
Questionnaires	School			Student, Teacher, and School				
Assessment Window	Oct 7 – Dec 13, 2024	Jan 6 – Mar 14, 2025	Mar 17 – May 23, 2025	Jan 27 – Mar 7, 2025				

# National and International Assessments - NAEP



*Preparations for Main/State NAEP 2026 are underway expect changes related to use of student devices!*

## NAEP 2024 Update:

- NAEP data release is tentatively scheduled for February 2025

## **\*\*Reminder: NAEP Updates**

- Field Study 2025
- Operational 2026
- New Mathematics and Reading Frameworks 2026
- New Science Framework 2028

# **ACCESS and Alternate ACCESS**

Maine's general and alternate assessments of English language proficiency

Coordinator: Mechelle Ganglfinger



# Upcoming Reporting Dates

9/13/24

WIDA Alternate ACCESS Reports and Data Files Available- Online in WIDA AMS

10/2/24

WIDA Alternate ACCESS Reports Available in District-Printed

The ACCESS and Alternate ACCESS window administration window will be open  
January 6<sup>th</sup> – February 28<sup>th</sup>, 2025

# WIDA Facilitated Virtual Workshops

## Planning with the WIDA ELD Standards Framework

### Two-Part Webinar Series

This Virtual Workshop is designed for educators and leaders who are responsible for language development within content learning and implementation of the WIDA ELD Standards Framework. In each session, participants will receive additional resources for using the ELD Standards Framework in instructional planning. Teams are strongly encouraged to attend the webinars together.

This Virtual Workshop will assist educators in using the ELD Standards Framework to identify and support language students will use to engage in content learning. Participants will explore how the ELD Standards Framework can support collaborative instructional planning.

#### Learning Goals

- Leverage student assets to integrate a language focus into content units.
- Identify and support language students will use throughout a series of unit activities.

#### Participation Requirements

- Attend two 90-minute live WIDA webinars
- WIDA Secure Portal account to access the materials, resources, and webinar platform available in the WIDA eLearning Center
- Estimated 4 hours to complete entire webinar series

#### FOUR BIG IDEAS

<b>EQUITY</b> of Opportunity and Access	<b>INTEGRATION</b> of Content and Language
<b>COLLABORATION</b> among Stakeholders	<b>FUNCTIONAL APPROACH</b> to Language Development



Webinar #1:  
October 2, 2024

Webinar #2:  
October 9, 2024

3:30-5 p.m.



Register with QR code.  
Deadline for registration: September 25, 2024



© 2024 The Board of Regents of the University of Wisconsin System, on behalf of WIDA



## When Language and Disability Meet: Planning Instruction to Support Dually Identified Students

Two Webinars + Online Resources  
December 3 and December 10, 2024 3:30-5 p.m.

**Audience:** This workshop is designed for any educator who supports dually identified students: students who are multilingual learners who have been identified as needing both English language development and special education services.

**Description:** In this workshop, participants will learn about the principles of Universal Design for Learning alongside instructional planning considerations from the WIDA English Language Development Standards Framework, 2020 Edition. Participants will explore specific considerations for instruction that support both language development and accessibility. Participants will also examine how collaborative conversations can be framed around student intersections of language and disability to facilitate the communication of information that positively impacts the decisions educators make for instructional planning.

#### Participation Requirements:

- Obtain a WIDA Secure Portal account (if necessary)
- Attend two 90-minute webinars and engage with online resources
- Spend an estimated total of 4 hours completing webinars and tasks



Register with QR code.  
Deadline for Registration: November 26, 2024  
wida.wisc.edu

© 2024 Board of Regents of the University of Wisconsin System, on behalf of WIDA



# Upcoming Professional Development Opportunities

## **Overview of ACCESS for MLs for new Test Coordinators** (all coordinators welcome)

Monday, October 21, 2024, 3:00pm-4:00pm

**Presentation Description:** Participants will be provided an overview of WIDA Alternate ACCESS including scheduling, basics of administration, and review of training resources.

## **Alternate ACCESS for MLs: An overview**

Monday, October 28, 2024, 3:00pm-4:00pm

**Presentation Description:** Participants will be provided with information on how to create WIDA user accounts, monitor test administrator training completion, use WIDA AMS, and how to administer the WIDA ACCESS assessment.

## **Accessibility Features and Accommodations on the ACCESS Assessment**

Monday, December 2, 2024, 3:00pm-4:00pm

**Presentation Description:** Participants will be provided with guidance on the selection and administration of Administrative Considerations, Universal Tools, and Accommodations available on the ACCESS assessment.

# WIDA ACCESS & Alternate ACCESS

## *Whom do I contact?*

### WIDA Client Services Center

1-866-276-7735

[Help@WIDA.us](mailto:Help@WIDA.us)

- WIDA Secure Portal account creation
- Assessment training modules
- Self-paced e-learning resources

### Data Recognition Corporation (DRC)

1-855-787-9615

[WIDA@datarecognitioncorp.com](mailto:WIDA@datarecognitioncorp.com)

- WIDA AMS account creation
- Technical issues with the WIDA AMS platform, including finding students, assigning accommodations, and creating test sessions
- Technical issues with the installation of the DRC lockdown browser

### Maine DOE Assessment Team

(207) 242-4244

[mestelle.ganglfinger@maine.gov](mailto:mestelle.ganglfinger@maine.gov)

- Questions related to assessment coordination, administration, and accessibility
- Policy-related questions
- Fixing a student who appears on your assessment roster in NEO but does not appear in WIDA AMS
  - *Please wait at least 36 hours after making the update in Synergy.*
- Any problems that WIDA and DRC Customer Services are unable to answer

# MSAA

Maine's alternate assessments based on alternate academic achievement standards in reading, math and science (AA-AAAS)

Coordinator: Mechelle Ganglfinger

# 2024-2025 Important Dates

2/18/25

MSAA System goes live for Spring 2025. Maine DOE will create the SAU TC accounts within the MSAA Platform. Training Modules for TCs and TAs available in the MSAA System.

3/1/25

Final check by MSAA TC to communicate with local data manager, administrative assistant or appropriate colleague to confirm that all students who are eligible for alternate assessment participation via the IEP have been accurately flagged in Synergy State Edition.

3/10/25 – 4/25/25

Administration window for the Multi-State Alternate Assessment [MSAA] in ELA/Literacy, Math, and Science.

7/14/25 - 9/5/25 Online reporting window for 2025 MSAA and MSAA Science.

# *Upcoming Training Opportunities*

- **1% - Overview of Maine's Alternate Assessments (AA-AAAS)**  
Thursday, September 19, 2024, 3:00pm-4:00pm
- **MSAA: Practical Applications and Intended Uses of Data for Teachers**  
Thursday, September 26, 2024, 3:00pm-4:00pm
- **MSAA Training for Alternate Assessment Coordinators**  
Monday, November 18, 2024, 3:00pm-4:00pm
- **MSAA Training for Alternate Assessment Test Administrators (TAs)**  
Monday, January 13, 2025, 3:00pm-4:00pm

# Multi-State Alternate Assessment

## *Whom do I contact?*

### MSAA Service Desk

866-834-8879

[MSAAServiceCenter@cognia.org](mailto:MSAAServiceCenter@cognia.org)

[Live Chat available](#)

- Issues with the platform
- Questions around account permissions/creation
- Mandatory training modules and quiz
- Help logging in

### Maine DOE Assessment Team

(207) 242-4244

[mestelle.ganglfinger@maine.gov](mailto:mestelle.ganglfinger@maine.gov)

- Questions related to assessment coordination, administration, and accessibility
- Policy-related questions
- Fixing a student who appears on your assessment roster in NEO but does not appear in the MSAA Platform
  - *Please wait at least 36 hours after making the update in Synergy.*
- Any problems that MSAA Service Desk is unable to answer



**Assessment Team  
Lunch 'n' Learn Office Hours**

---

**Q&A**



Stay Connected!

---

## Find Us Online!



[www.maine.gov/doe](http://www.maine.gov/doe)



@MaineDOEComm



@mainedepted



@mdoenews



@MaineDepartmentofEducation1