

PLANNING MATH PATHWAY REFORM

GETTING STARTED



Communicate and maintain commitment

- Identify administrative and academic leaders in school and district
- Ensure broad understanding of math pathways and how pathways support school goals
- Identify resources and opportunities that will support commitment
- Structure communication and engagement expectations



Establish the leadership team

- Set regular meetings and identify roles and responsibilities for each member
- Determine process for making and documenting decisions



Plan for communication and engagement over time

- Create and revisit and communication and engagement plan
- Gather feedback from stakeholders
- Build capacity for implementing and sustaining pathways over time

PLANNING



Gather and review information on the current school context

- Review current data
- Define the problem
- Gather enabling/limiting structures within and beyond the school
- Gather supporting information, relevant research, and effective practices



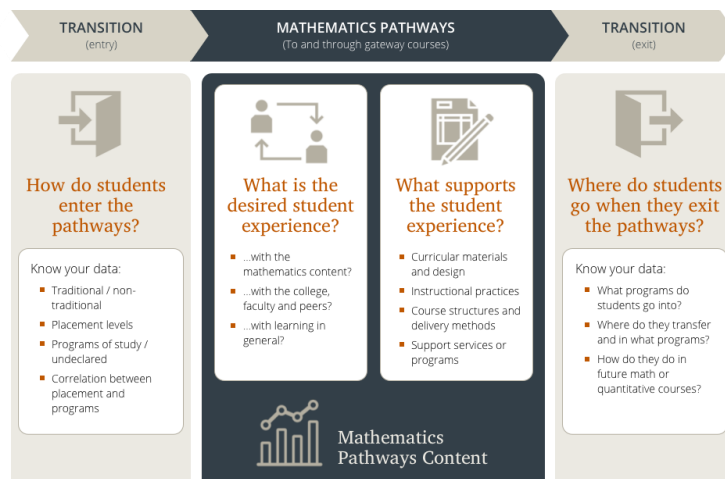
Define goals

- Determine which pathways and offerings may be needed
- Set a vision and goals for implementing pathways



Create implementation plan

- Revisit the communication and engagement plan
- Identify the pathway courses and offerings that support school goals
- Identify faculty and staff needs to prepare for implementation
- Create a plan for the first year of implementation
- Anticipate and plan for implications of the change
- Understand and cultivate a positive institutional culture



IMPLEMENTING



Design courses and offerings

- Backwards map to define mathematical and academic needs of all students
- Align student supports and guidance
- Ensure adequate faculty capacity and provide professional learning



Establish processes and structures for student enrollment

- Engage school counselors and other guidance supports
- Ensure appropriate, transparent advising structures and practices that help students identify the math pathway that aligns with their goals

CONTINUOUS IMPROVEMENT



Use data to assess progress and learn from change

- Monitor the impact of the changes on the students and the school
- When appropriate, use interim evaluations and stakeholder interviews to assess the impact of the changes
- Facilitate data-driven discussion to learn from change
- Revisit the communication and engagement plan to build a broader understanding of math pathways
- Celebrate success – *this an important step often overlooked in educational change*

Adapted for secondary schools from the [Dana Center's Math Pathway Implementation Guide](#) – see the guide more detailed steps of implementation.

