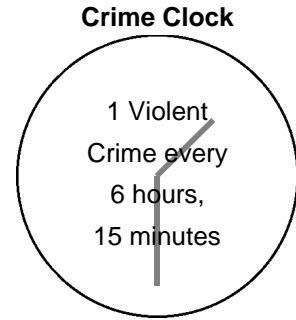


VIOLENT CRIMES

Crimes of violence involve the element of personal confrontation between the perpetrator and victim and entail the use or threat of violence. By their very nature, violent crimes — murder, rape, robbery and aggravated assault — are considered more serious than property crimes. The total number indicates only the number of incidents reported to police and does not reflect the number of criminals who committed them or the number of injuries inflicted.

During the year 2002, violent crimes showed a decrease from the previous year. There were 1,402 reported offenses during 2002 — compared with 1,423 for 2001. This decrease of 21 crimes reported represents a decrease of 1.5%.

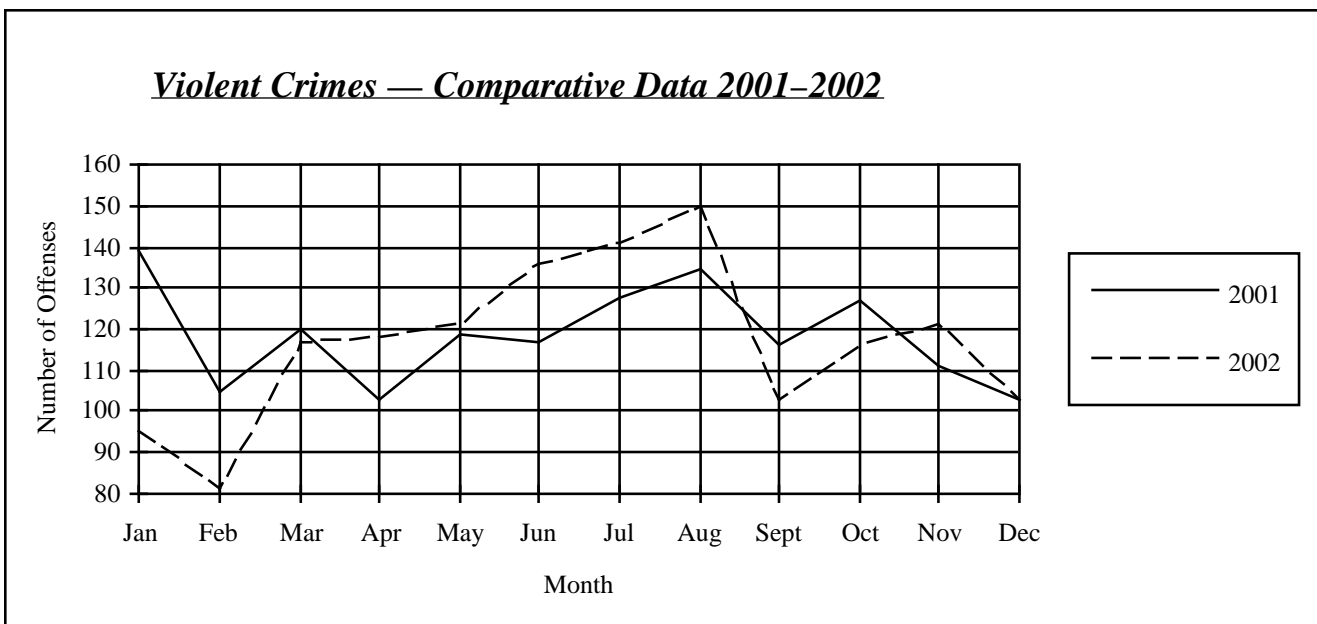
The 2002 crime rate for violent crime is 1.08 offenses per 1,000 population. Violent crimes represent 4.1% of all reported index crimes. Police cleared 883 violent crimes for a 63.0 clearance rate.



Number of Offenses — Comparative Data 2001–2002

	Murder	Rape	Robbery	Aggravated Assault	Totals
2001	19	322	263	819	1,423
2002	14	391	269	728	1,402
Number Change	-5	69	6	-91	-21
Percent Change	-26.3%	21.4%	2.3%	-11.1%	-1.5%

Violent Crimes — Comparative Data 2001–2002



Violent Crime by County

(State Violent Crime Rate: 1.08)

